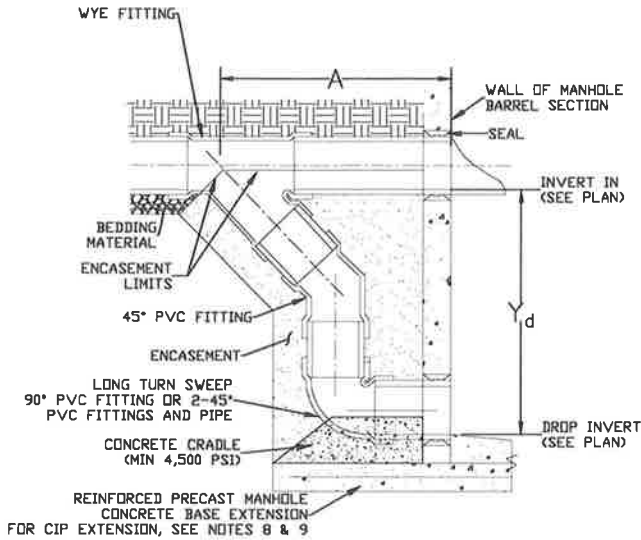
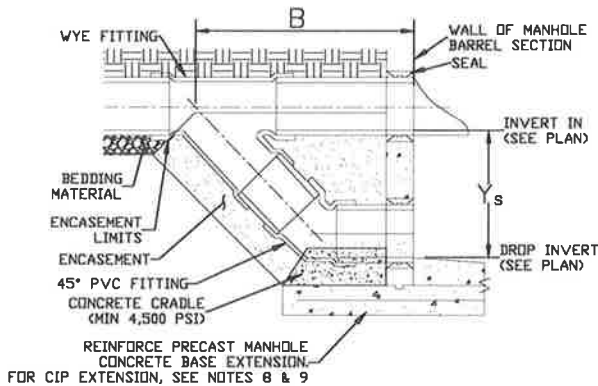


DROP MANHOLE NOTES:

1. ALL PIPE AND FITTINGS TO BE ASTM D3034, F679 AND DISTRICT APPROVED. PIPE 12" AND LARGER SHALL BE CONSTRUCTED WITH SDR 26 PIPE AND FITTINGS.
2. DIAMETER OF THE DROP PIPE SHALL NOT BE LESS THAN MAIN LINE PIPE DIAMETER.
3. FOR 18" DIAMETER AND LARGER, OUTSIDE DROP SHALL BE A SPECIAL DESIGN AND DISTRICT APPROVED PRIOR TO REVIEW SUBMITTAL.
4. A KOR-N-SEAL BOOT SHALL BE USED FOR THE CONNECTIONS IN A PRECAST MH. A WATER STOP GASKET AROUND THE PIPE SHALL BE USED IN A CAST IN PLACE (CIP) BASE AND SHALL BE DISTRICT APPROVED.
5. OUTSIDE DROP SHALL BE ALL OF ONE MATERIAL AND SIZE.
6. FLOW FILL ENCASEMENT SHALL BE A MINIMUM OF 8" THICK ALL AROUND.
7. PIPE DIMENSIONS ARE APPROXIMATE AND MAY VARY FROM ONE MANUFACTURER TO ANOTHER.
8. FOR CIP BASE MH WITH EXTENDED BASE, EXTEND #4 BAR PATTERN INTO EXTENSION.
9. FOR CIP EXTENSION TO PRECAST MH BASE, USE #4 DOWELS X 22"LG (4" EMB) AND #4 @ 12 EW MAT. BASE THICKNESS TO MATCH THE PRECAST MH BASE THICKNESS, 8" MIN. BASE DIMENSIONS TO SUPPORT ENCASEMENT.
10. ALL REQUIRED WALL OPENINGS SHALL BE PRECAST BLOCK-OUTS OR CORE DRILLED. JACK HAMMERING OF OPENINGS IS NOT ALLOWED.
11. EXCEEDING THE MAXIMUM ALLOWABLE DROP NOTED, SHALL BE APPROVED BY THE DISTRICT PRIOR TO THE REVIEW SUBMITTAL.
12. ALL DROP MANHOLES SHALL BE LINED WITH SPECTRA SHIELD OR APPROVED EQUAL



OUTSIDE DROP - DEEP: FOR PVC



OUTSIDE DROP - SHALLOW: FOR PVC

-TRACE WIRE ON OUTSIDE OF MH NOT SHOWN FOR CLARITY

DIMENSIONS (NOMINAL)	A (INCHES)				B (INCHES)				Y <sub>d</sub> (INCHES)				Y <sub>s</sub> (INCHES)			
PIPE DIAMETER (INCHES)	8	10	12	15	8	10	12	15	8	10	12	15	8	10	12	15
MINIMUM DROP GREATER THAN	42	47	49	65	41	43	51	61	31	37	39	55	18	18	22	28

DATE  
10/25/2019

DRAWING  
D.10S



PLATTE CANYON  
WATER & SANITATION DISTRICT

**OUTSIDE DROP  
MANHOLE FOR PIPE  
15" OR SMALLER  
DETAIL**