

18" FIBER MESH CONCRETE COLLAR, 1" BELOW RIM AND SLOPED AWAY FROM MH (IN FIELD)

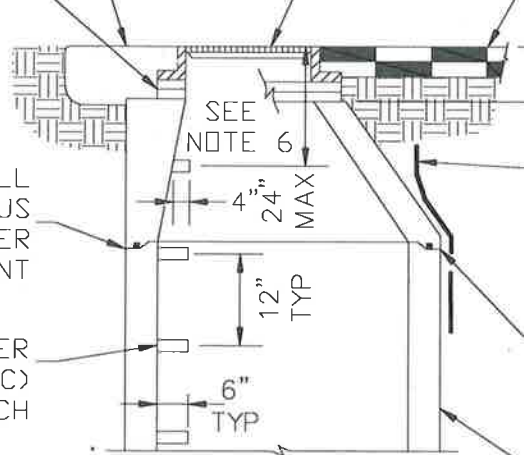
24"DIA-8"H, CAST IRON RING AND COVER, SEE MH COVER DETAIL FOR ADDITIONAL SIZING

2' DIA PRECAST CONC ADJUSTMENT RINGS SET IN FLEXIBLE BUTYL RUBBER CAULKING, USE FULL HEIGHT RINGS

FINISHED PAVEMENT PER GOVERNING AUTHORITY

EACH PRECAST RISER SHALL BE SET IN A CONTINUOUS BED OF BUTYL RUBBER SEALANT

MANHOLE STEPS (COPOLYMER POLYPROPYLENE PLASTIC) PLACED OVER BENCH



20" MAX

10GA TRACE WIRE INTO 6" CI SHORT VALVE BOX AND FDN. SEE TYPICAL TW PLACEMENT DETAIL

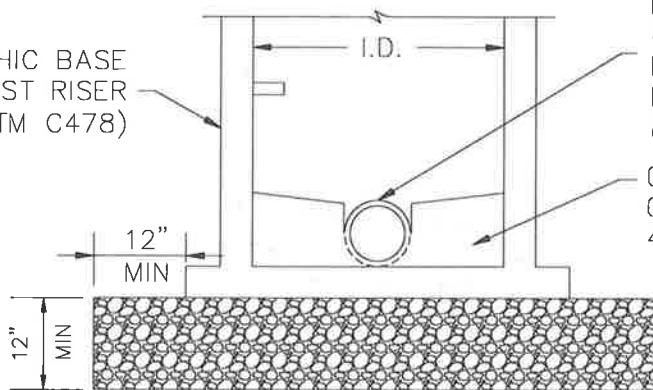
EXTERIOR JOINTS TO BE COVERED IN 12" WIDE JOINT WRAP, GROUT INTERIOR JOINTS

PRECAST RISER AND ECCENTRIC CONE (ASTM C478)

PRECAST MONOLITHIC BASE SLAB AND FIRST RISER SECTION (ASTM C478)

PIPE SHALL PROTRUDE 4" MINIMUM INTO THE MANHOLE THROUGH KOR-N-SEAL "BOOT" OR APPROVED EQUIVALENT.

CAST-IN-PLACE CONCRETE BENCH 4,500 PSI MIN CONCRETE



3/4" TO 1 1/2" CRUSHED ROCK

**NOTES:**

1. ALL PRECAST CONCRETE SHALL BE WET CAST, 6,000 PSI MINIMUM STRENGTH.
2. MANHOLES ARE TO BE WATERPROOF.
3. PRECAST MANHOLE WILL REQUIRE AN EXTERIOR COATING OF WATERPROOFING.
4. THE BENCH SHALL HAVE A BRUSHED SURFACE AND A FULL DEPTH CHANNEL.
5. A TWO-SIDED CONFINED SPACED WARNING TAG SHALL BE ATTACHED TO THE TOP STEP.

**MANHOLE ID:**

- ID=4' FOR SEWER MAIN DIAMETERS < 15"
  - ID=5' FOR SEWER MAIN DIAMETERS 15"-36"
  - ID=6' FOR SEWER MAIN DIAMETERS 42"-48"
- WHENEVER MORE THAN A TWO WAY MH OF MAX PIPE IS REQUIRED, THE MH SHALL BE INCREASED TO THE LARGER DIAMETER SIZE

DATE  
10/25/2019



PLATTE CANYON  
WATER & SANITATION DISTRICT

DRAWING  
D.6S

**PRECAST MANHOLE  
PRECAST BASE  
DETAIL**