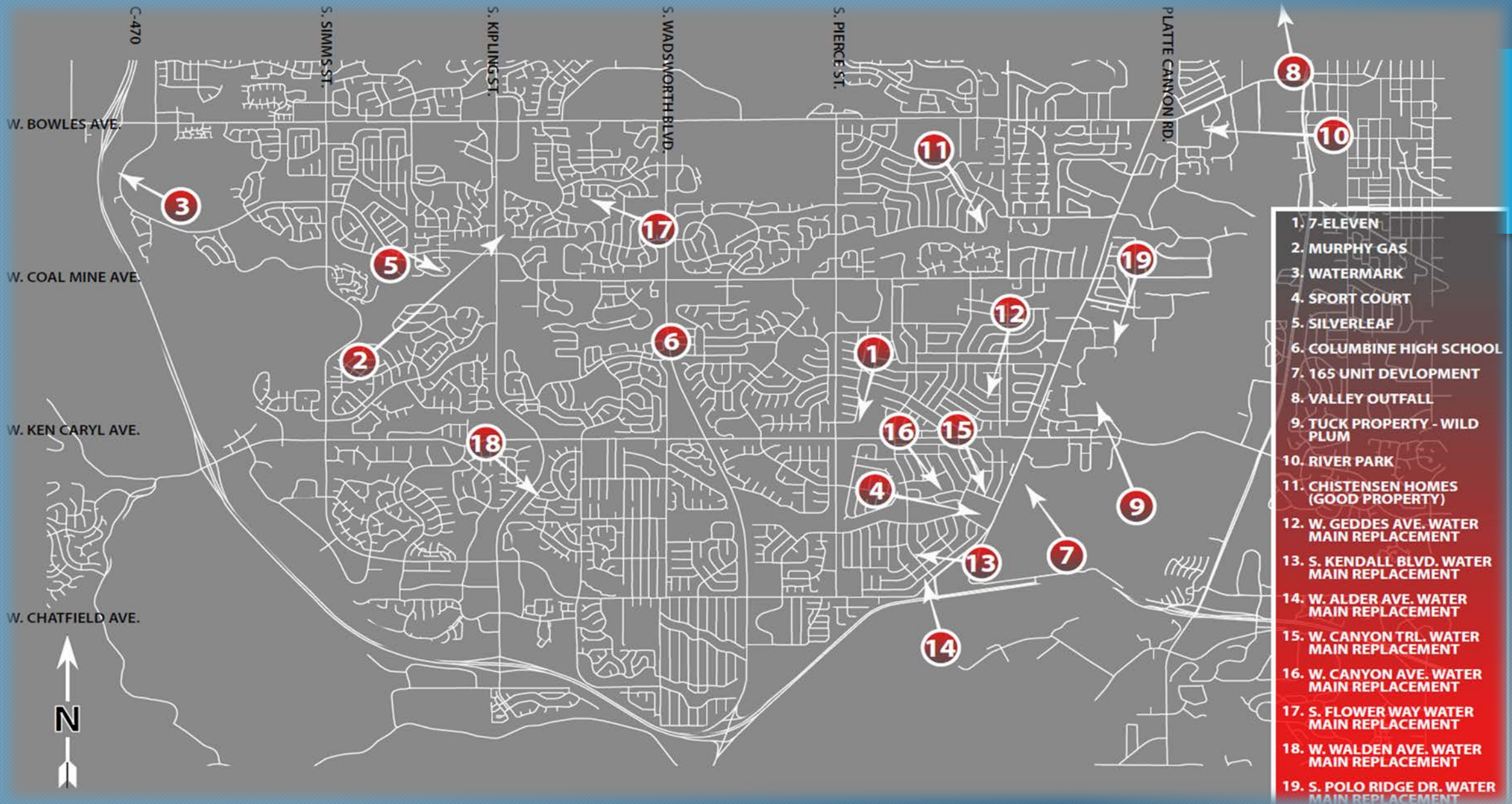


PLAN REVIEW AND CONSTRUCTION STATUS REPORT – AUGUST - 2020



SUMMARY of projects in design or under construction

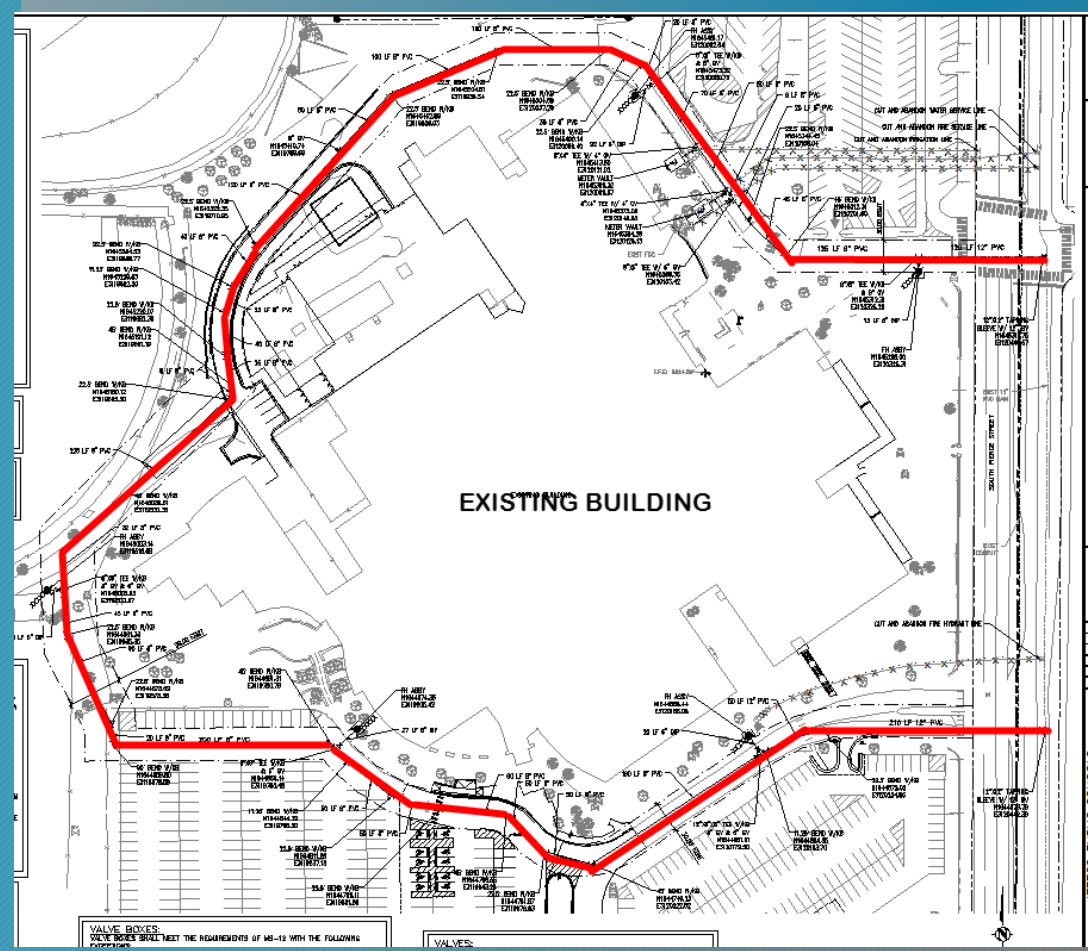


Overall Project Map



NEW DEVELOPMENT PROJECTS IN DESIGN/PLAN REVIEW:

- PROJECT NAME: Columbine High School
- LOCATION: Pierce and Bowles
- STATUS – Project in design, Annexation completed
- SCOPE: 2878' of 8' and 12" Water Main Extension



Proposed Water Pipe Configuration

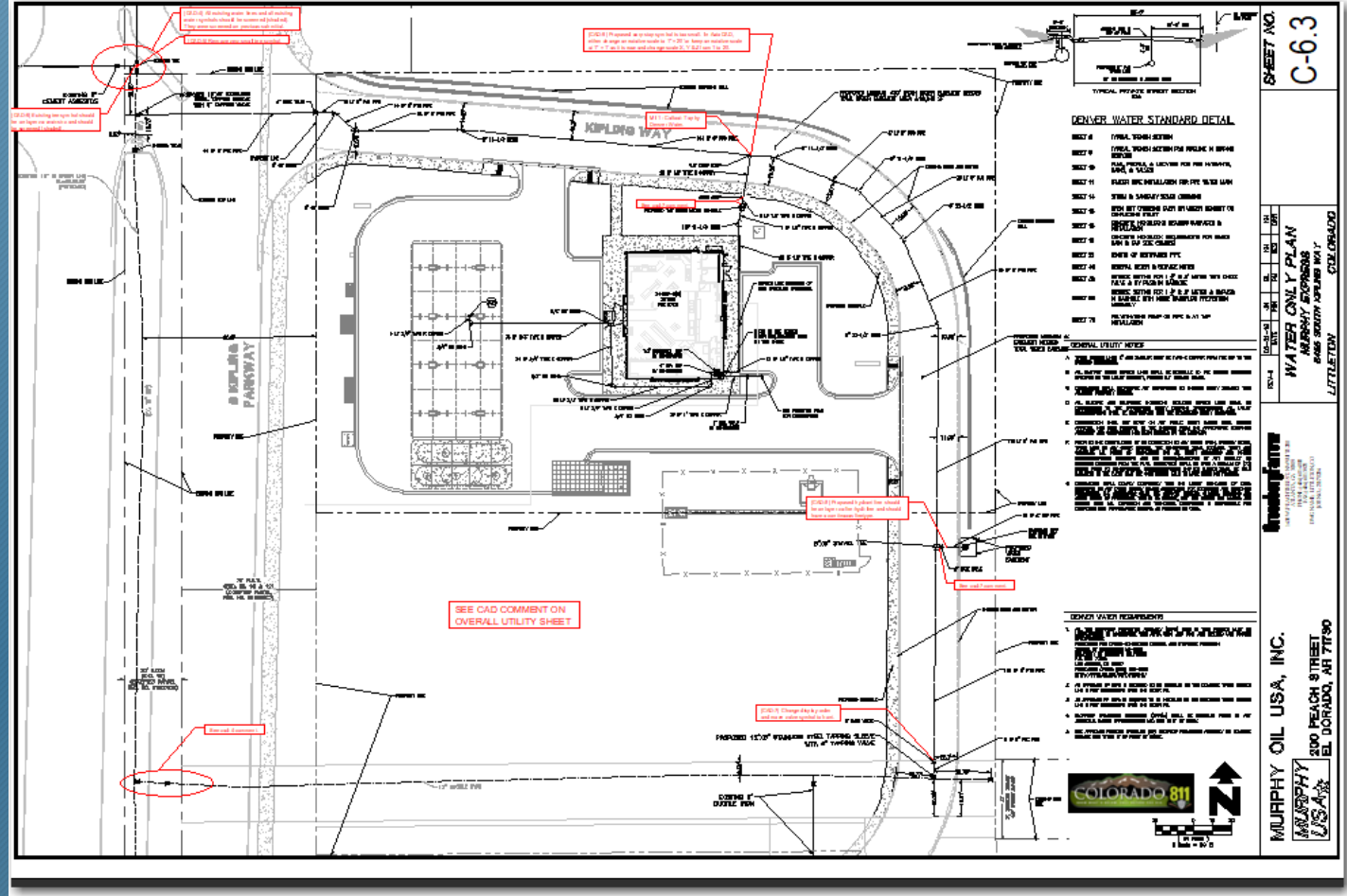


Original Water Pipe Configuration

- PROJECT NAME: Murphy Express – Gas Station
- LOCATION: S. Kipling St., 500' South of W. Coal Mine Ave.
- STATUS: In Plan Review, Murphy Oil will now lease the site which changes the easement and warranty documents
- SCOPE: 732' of 8" PVC Pipe

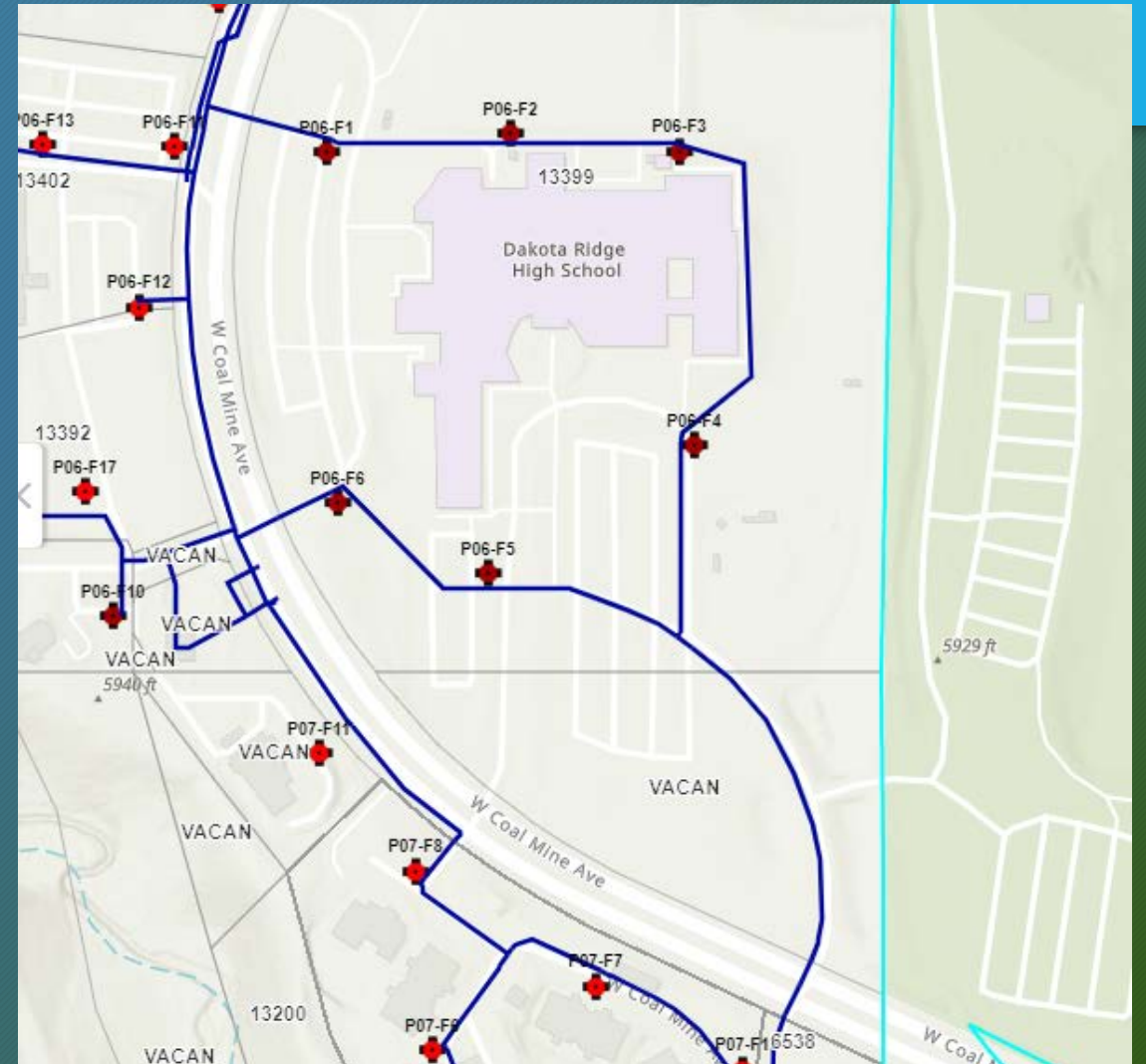
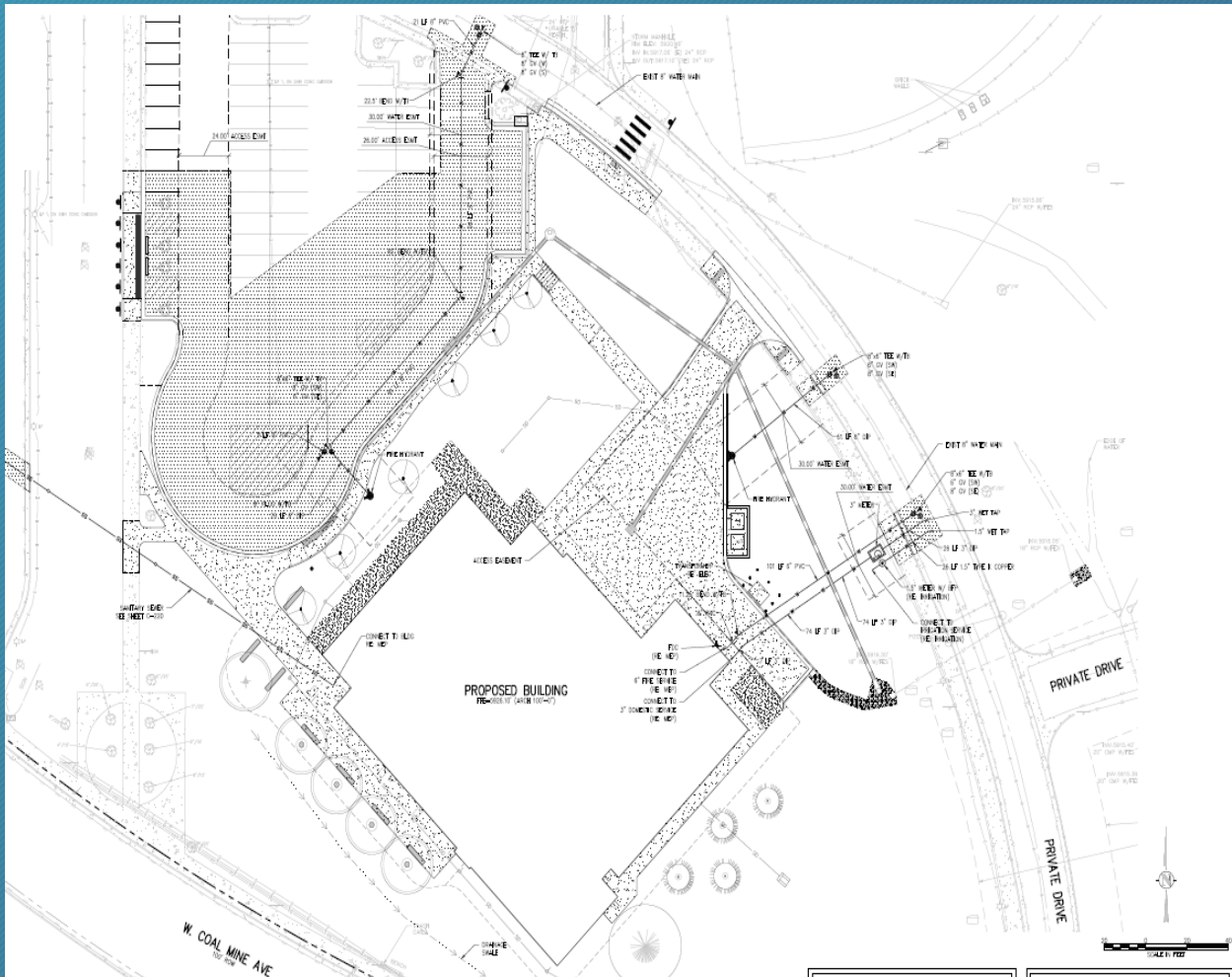


PROJECT LOCATION



PROJECT PLAN

- LOCATION: Coal Mine and Bowles
- PROJECT NAME: Dakota Ridge Warren Tech
- STATUS: In Design – Staff and District engineer review
- SCOPE: Water main installation

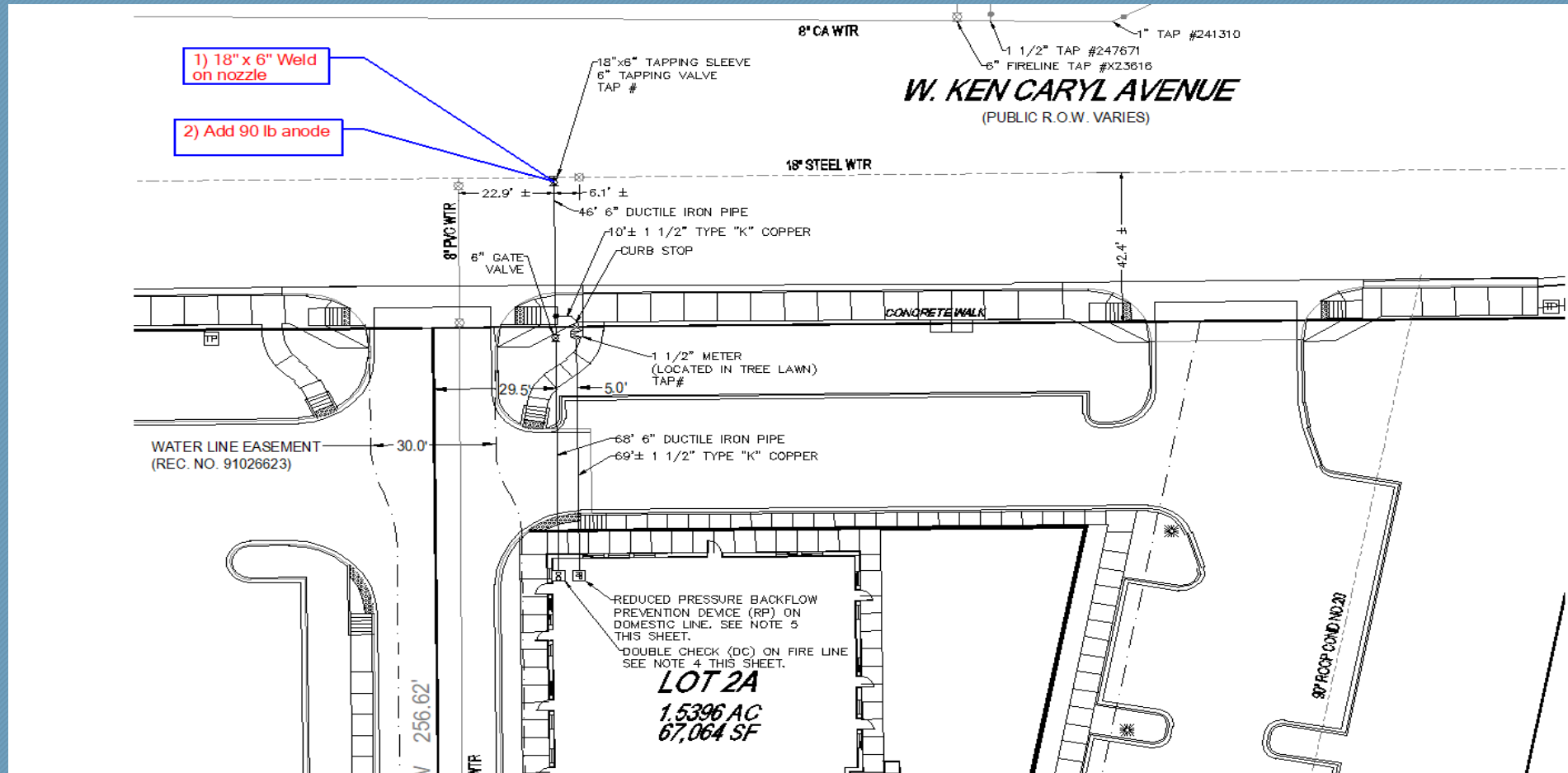


Project Plan



*THE FOLLOWING ARE DEVELOPMENT PROJECTS IN
VARIOUS STAGES OF CONSTRUCTION*

- LOCATION: Northeast Corner of Pierce and Ken Caryl
- PROJECT NAME: Kiddie Academy
- STATUS: Fireline connection on 18" steel main pending; Excavation for building has begun
- SCOPE: Daycare – New Fireline



Project Plan

CONCEPTUAL PROJECTS; RECENT ACTIVITY:

THE FOLLOWING ARE 2020 CAPITAL PROJECTS IN DESIGN

Valley Sewer Outfall Replacement/Relocation – Lift station construction pumping to force main around landfill

Status – In Construction – Prefabricated lift station placed – utilities to site

➤ Schedule:

- 8" Force Main Construction - complete
- Lift Station Delivery - complete
- Xcel (gas and elec) – set pole and transformer – July 20th, Gas install unknown
- Set electric meter – end of July – Gas meter unknown
- Test lift station 8/10 – 8/28



Setting Lift Station on Foundation



Suction Pipes from Wet Well



Backup Generator

➤ PC PROJECTS:-

- A. W. Geddes Ave. between S. Chase Ct. and S. Sheridan Ct. (CIP 20-IW) **Start date pending**
- B. S. Kendall Blvd. between W. Monticello Ave. and W. Alder Ave. (CIP 20-2W) **Started 8/27**
- C. W. Alder Ave. between S. Kendall Blvd. and S. Jay Dr. (CIP 20-3W) **80% Complete**
- D. W. Canyon Tr. between S. Depew St. and S. Sheridan Ct. (CIP 20-4W) **95% Complete**
- E. W. Canyon Ave. between W. Canyon Dr. and S. Depew St. (CIP 20-SW) **95% Complete**

➤ SWM PROJECTS -

- A. S. Flower Way between W. Arbor Ave. and fire hydrant J06-F23 (CIP 20-IW) **Complete**
- B. W. Walden Ave. between S. Independence Way and S. Hoyt Ct. (CIP 20-2W) **Complete**
- C. Polo Ridge Dr. between Thoroughbred Run and end of the cul-de-sac (CIP 20-3W) **Complete**



Walden Ave 12" Water Trench



Flower Way 6" Water Trench



Polo Club 12" Water Trench

QUESTIONS?