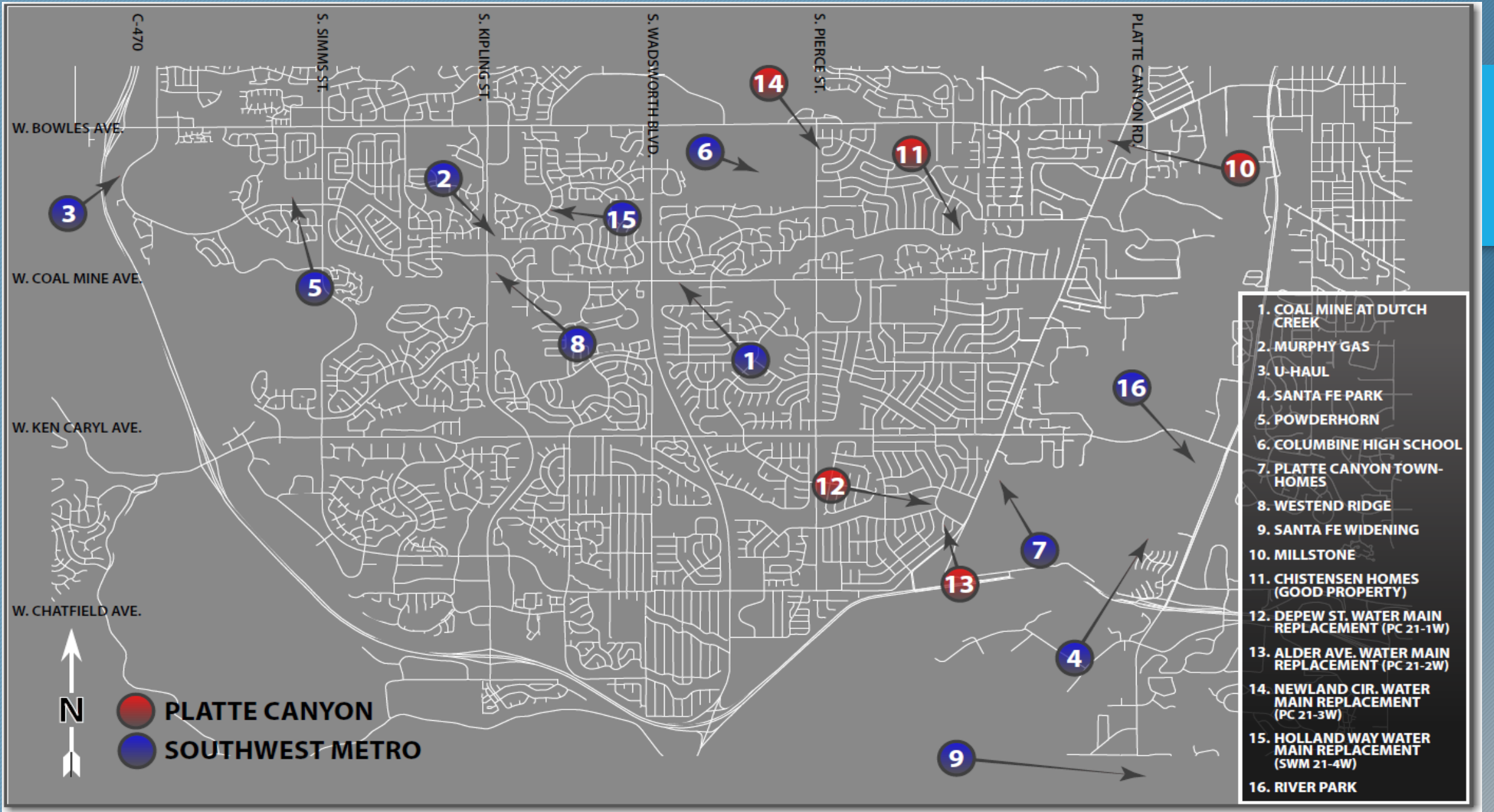


PLAN REVIEW AND CONSTRUCTION STATUS REPORT – August - 2021



SUMMARY of projects in design or under construction



Overall Project Map

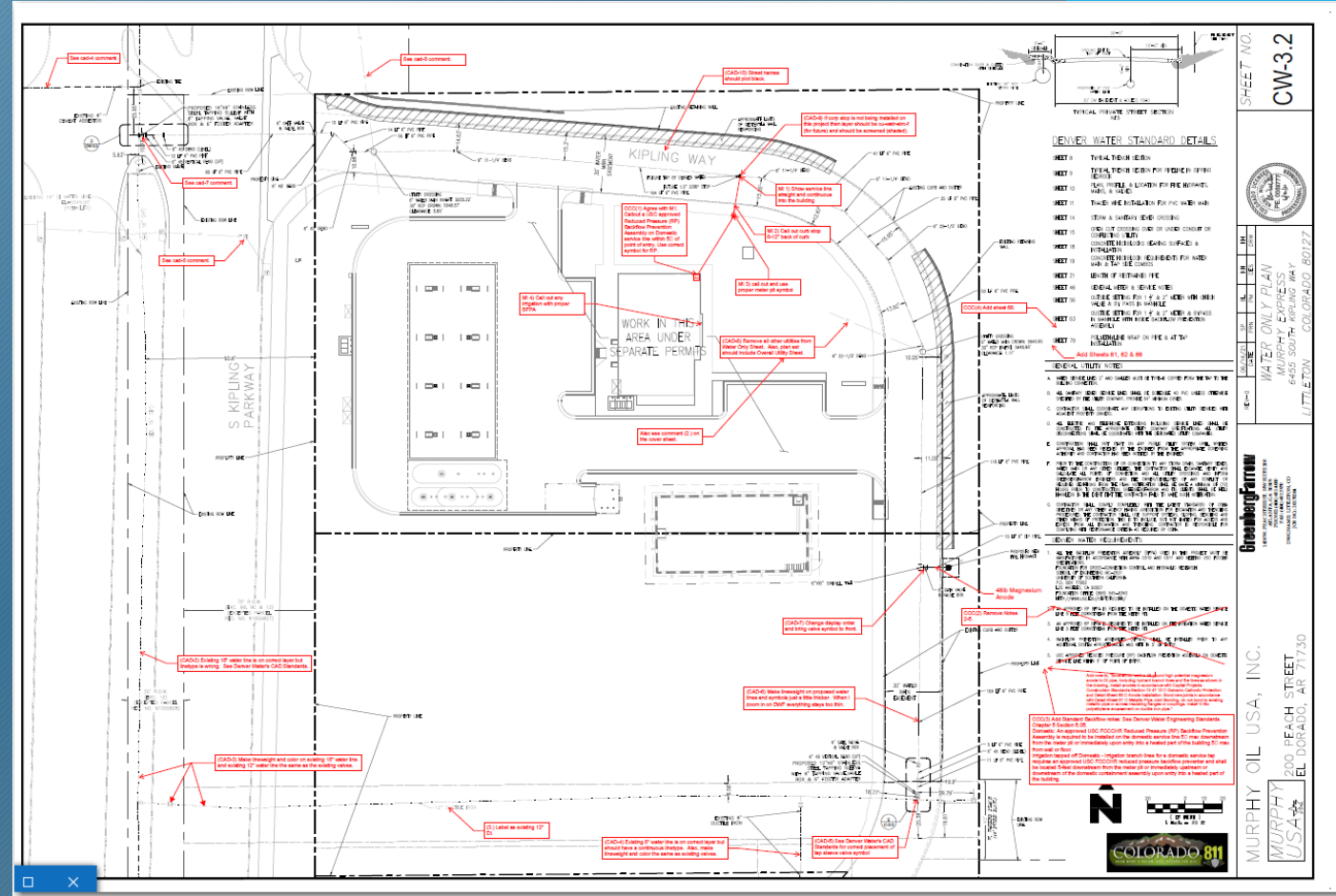


NEW DEVELOPMENT PROJECTS IN DESIGN/PLAN REVIEW:

- PROJECT NAME: Murphy Express – Gas Station
- LOCATION: S. Kipling St., 500' South of W. Coal Mine Ave.
- STATUS: In Plan Review at DW – Easement Acquisition complete – Application and Agreement Complete
- SCOPE: 732' of 8" PVC Pipe



PROJECT LOCATION

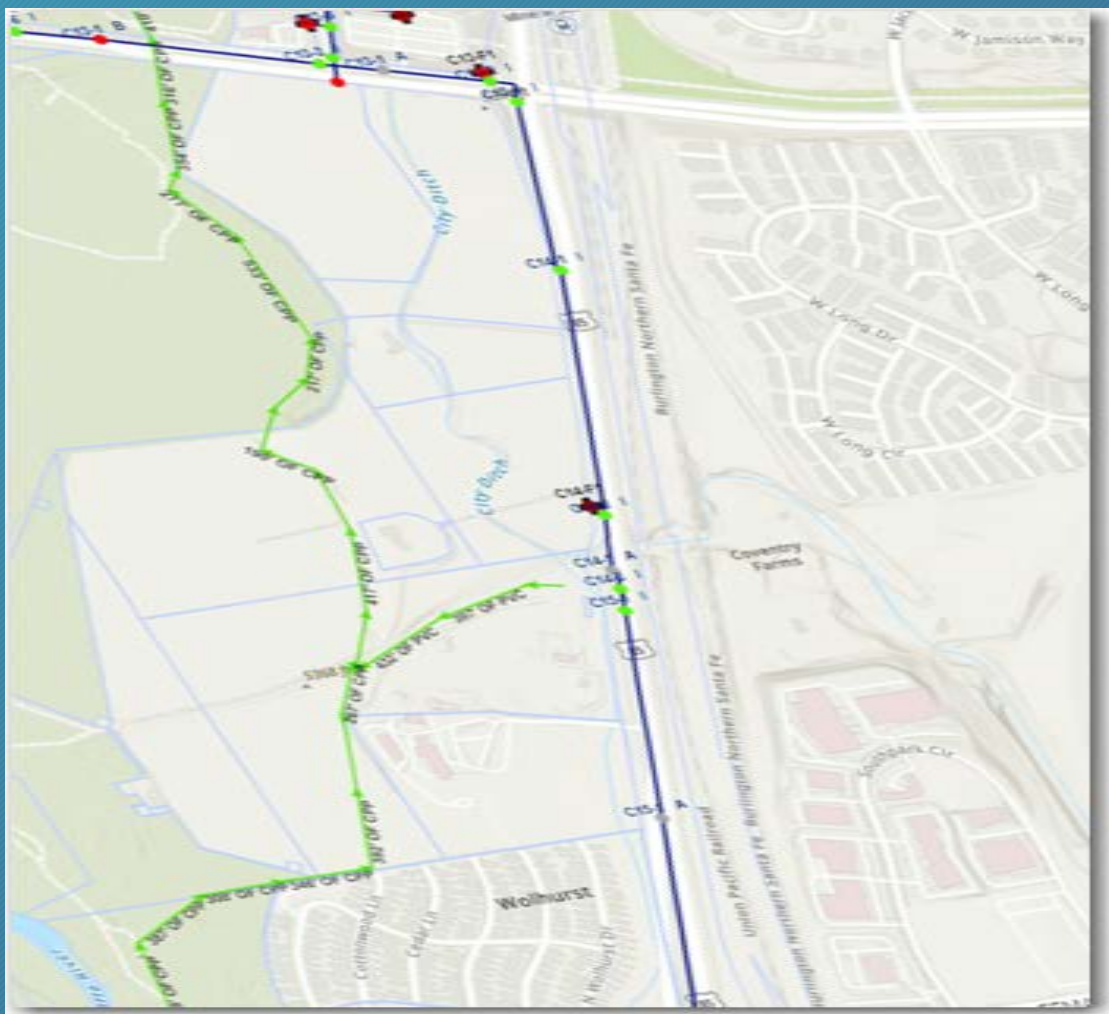


PROJECT PLAN - DW Review #6

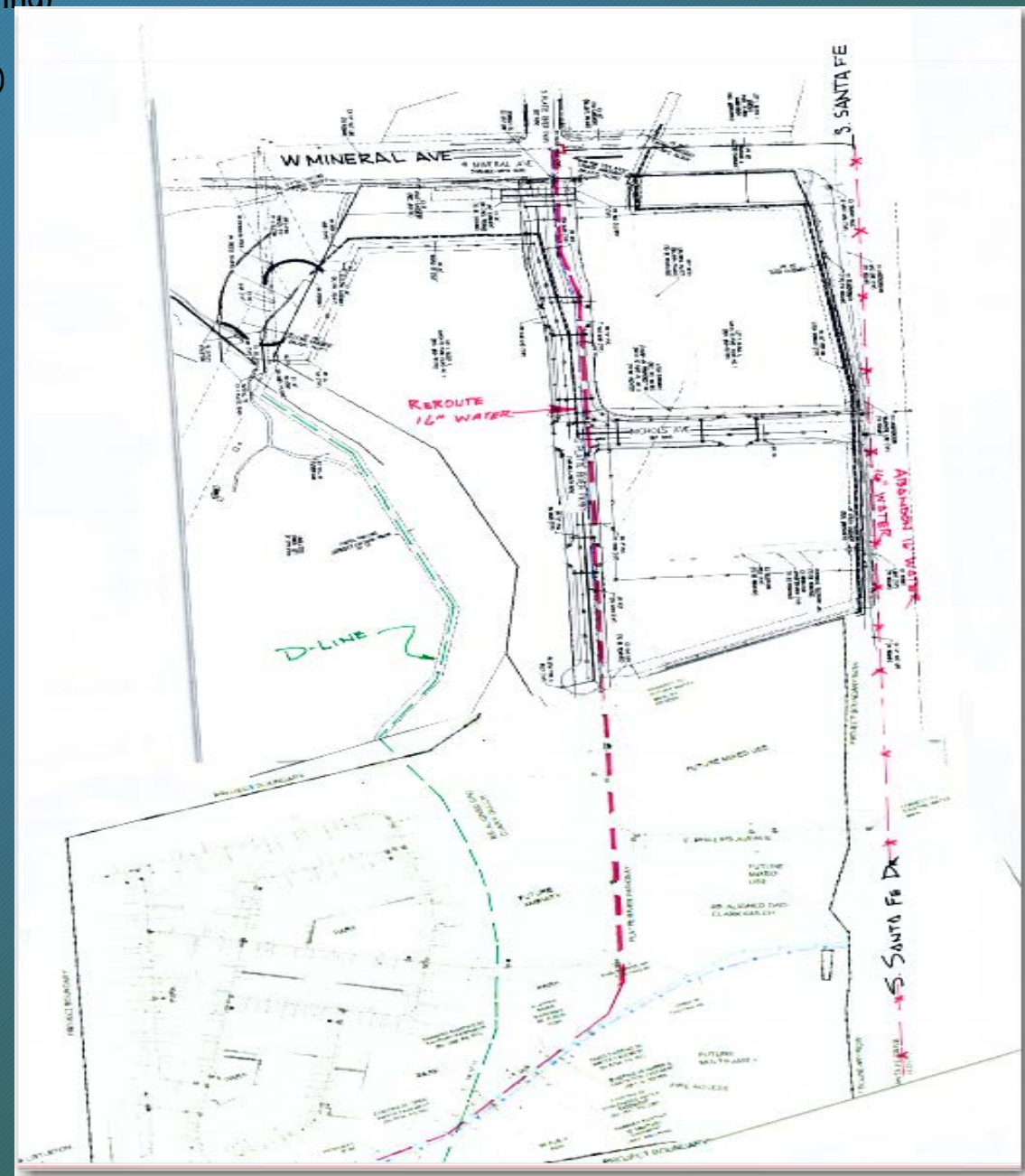
SHEET NO. CW-3.2
 WATER ONLY PLAN
 6455 SOUTH KIPLING WAY
 LITTLETON, COLORADO 80127
 MURPHY OIL USA, INC.
 200 PEACH STREET
 EL DORADO, AR 71730

CONCEPTUAL PROJECTS; RECENT ACTIVITY:

- PROJECT NAME: From north to south Santa Fe Park South – (Toll Brothers/HKS Engineering)
- LOCATION: 3000' South of Mineral Ave; West Side of Santa Fe (adjacent to Wolhurst)
- STATUS: Metro District - Littleton and Toll Brothers, Tim reviewing Service Plan, Resolution of Consent)
- Water- In Design – #1 Submittal to Staff
- Sewer – In Design – Need a capacity study on the D-line
- SCOPE: Multi Family (336 units) and Townhome (403) Development -
- ANTICIPATED TAP REVENUE (South): sewer - \$989,658.00 & water (size TBD) - \$2,140,200.00

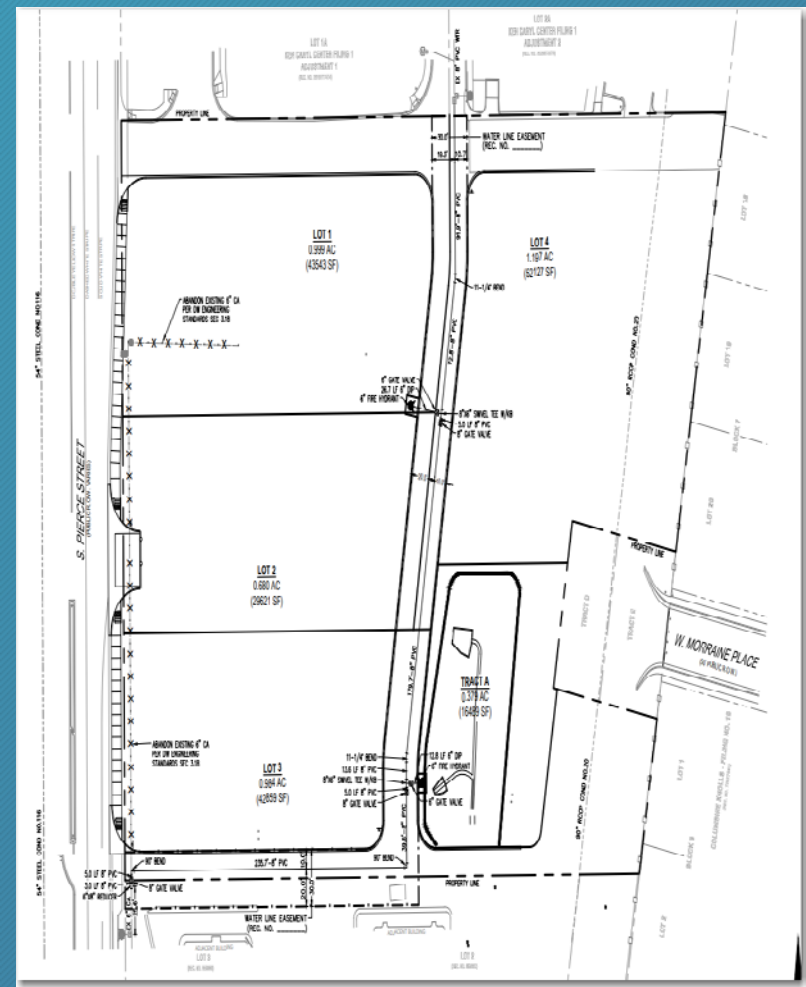


EXISTING WATER AND SEWER PIPE

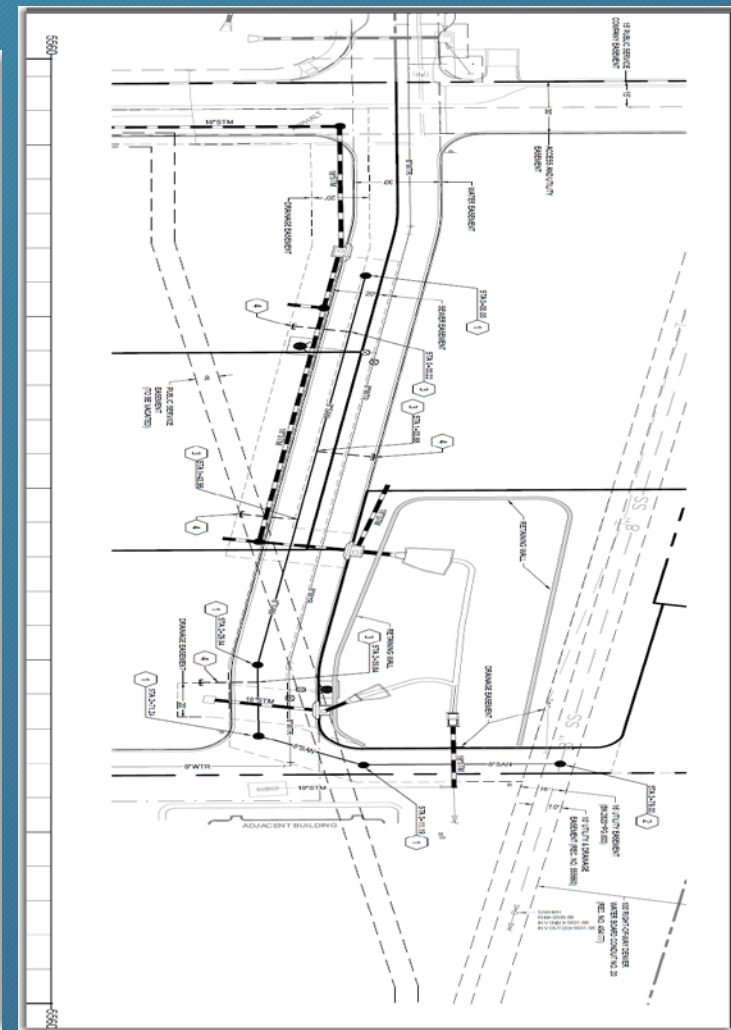


PROPOSED 16" PIPE ROUTE

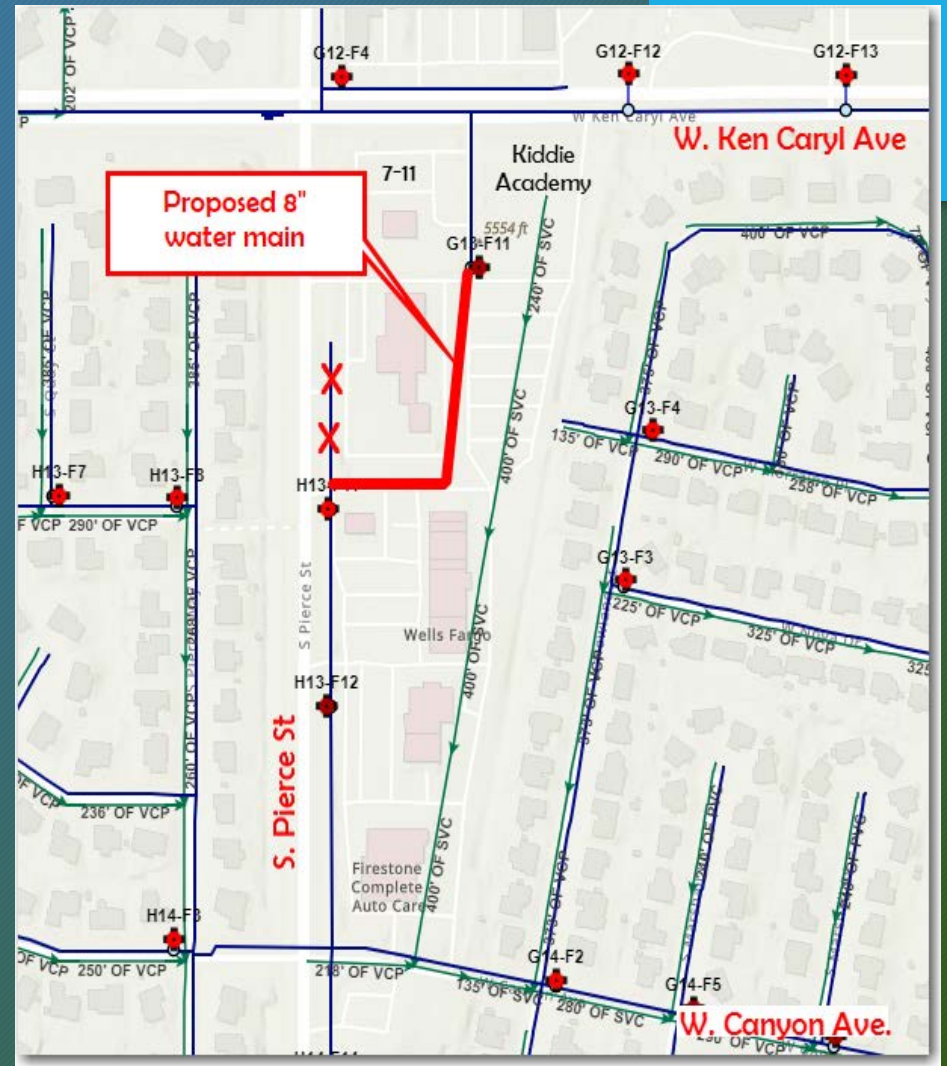
- PROJECT NAME: Ken Caryl Center
- LOCATION: Southeast corner of S. Pierce St and W. Ken Caryl Ave
- STATUS: Referral From Jefferson County
- Water- Preliminary
- Sewer - Preliminary
- SCOPE: Commercial Development



Preliminary Water Plan



Preliminary Sewer Plan



Proposed Pipe Route

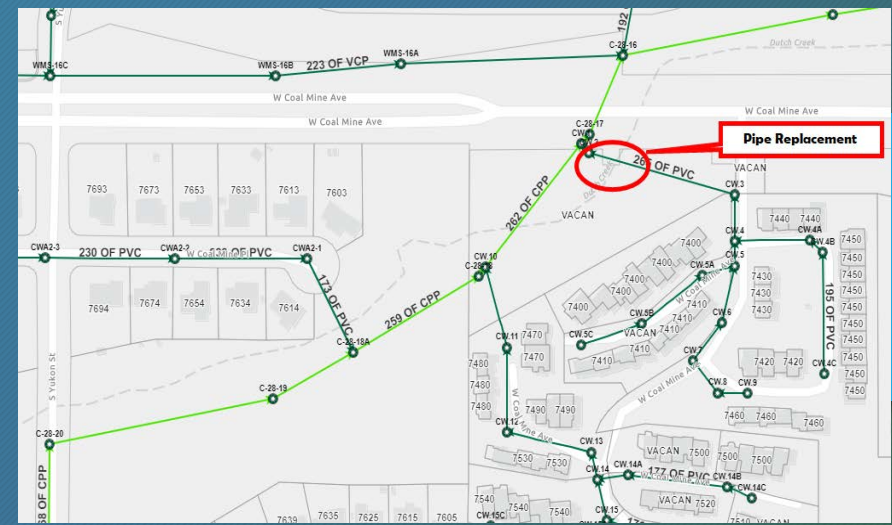


*THE FOLLOWING ARE DEVELOPMENT PROJECTS IN
VARIOUS STAGES OF CONSTRUCTION*

- **PROJECT NAME:** Dutch Creek Crossing Coal Mine – Drainage Improvement
- **LOCATION:** Coal Mine East of S. Yukon St
- **STATUS:** In construction; Start on north side of Coal Mine, sewer main work in August
- **SCOPE:** Encase 8" Sewer Pipe Under Dutch Creek



8" Sewer Main and Casing in Trench



Project Location



Bypass and Pumps at Suction Manhole



Interior of East Connection - Existing to New

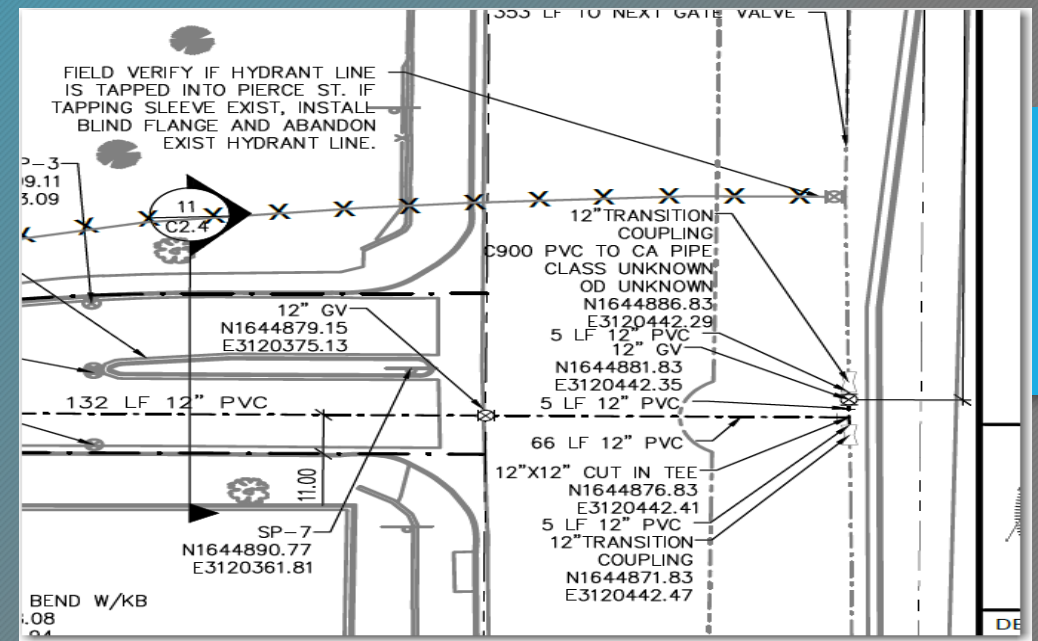
- PROJECT NAME: Columbine High School
- LOCATION: Pierce and Bowles
- STATUS – Water Line in Construction – Testing Complete
- SCOPE: 2878' of 8' and 12" Water Main Extension.



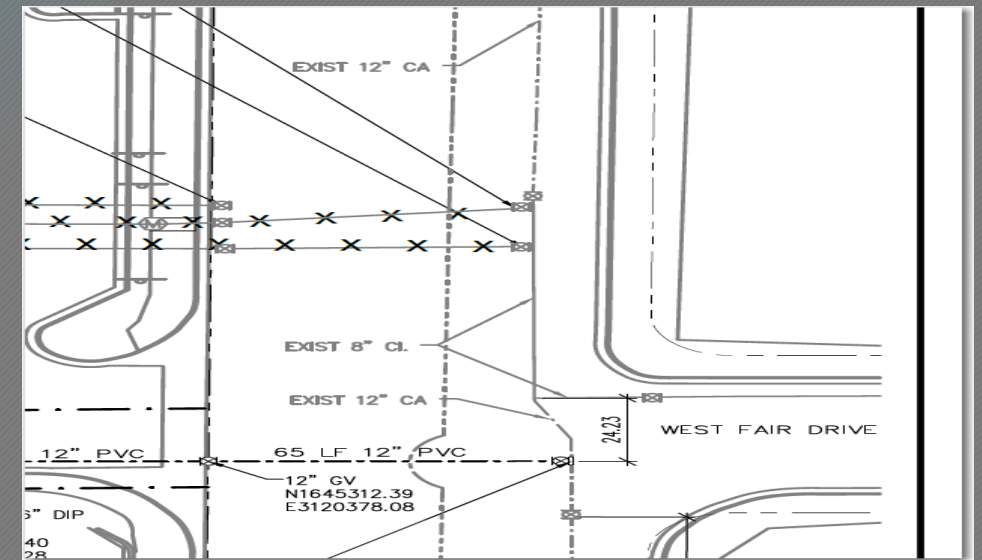
Old valve feeding domestic service in Pierce St



Removed tapping valve and installed plug on tapping sleeve



Cut Off South Entrance

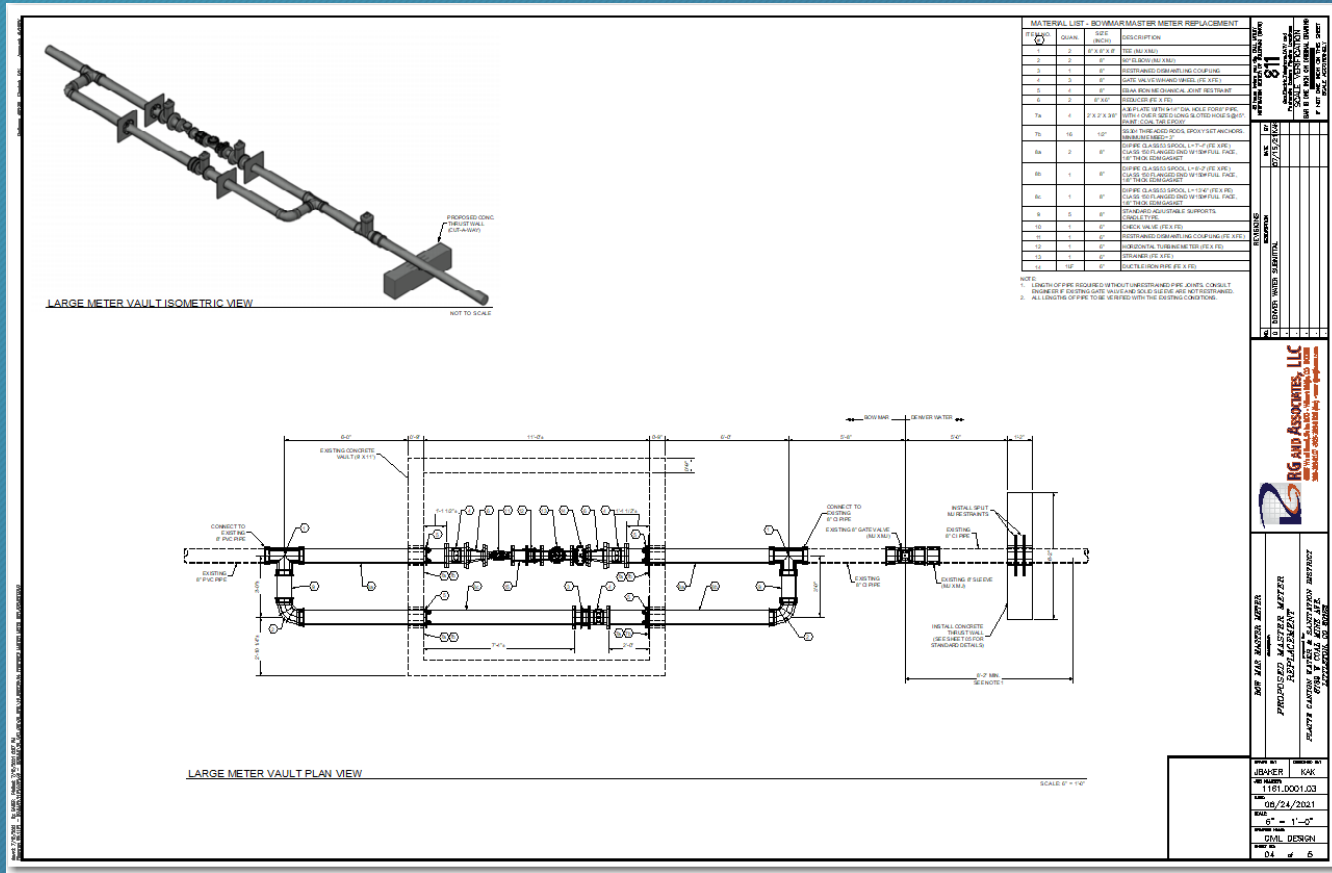


Cut Off North Entrance



THE FOLLOWING ARE 2021 CAPITAL PROJECTS IN DESIGN

- PROJECT NAME: Bow Mar Meter and Pipe Replacement
- LOCATION: Tuffs Ave and S. Sheridan Blvd
- STATUS: In Design – Plans at Denver Water
- SCOPE: Replace pipe, valves and meter through existing vault



Plan Layout - Looking West

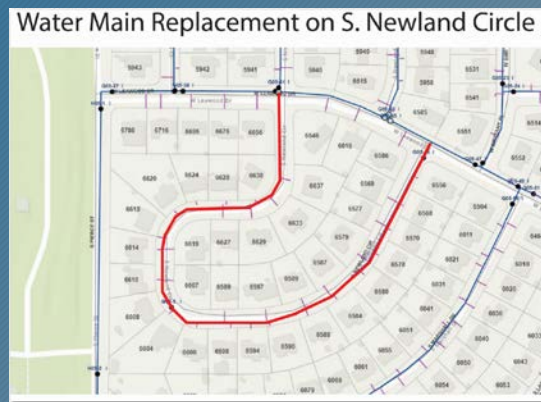
Plan and Isometric Drawing - Meter and Pipe in Existing Vault

THE FOLLOWING ARE 2021 CAPITAL PROJECTS IN CONSTRUCTION

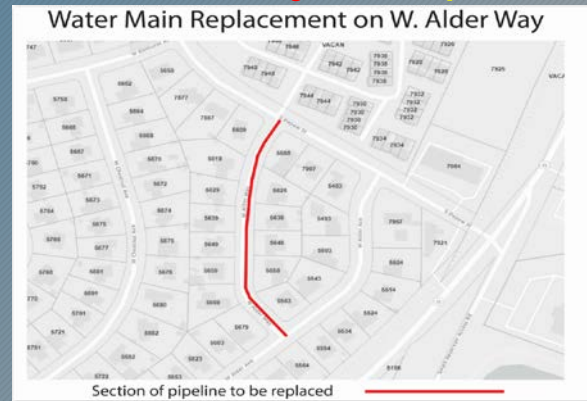
➤ CAPITAL PROJECTS CONSTRUCTION STATUS/SCHEDULE

➤ PC PROJECTS:

Newland Cir – Complete



Alder Way – Complete



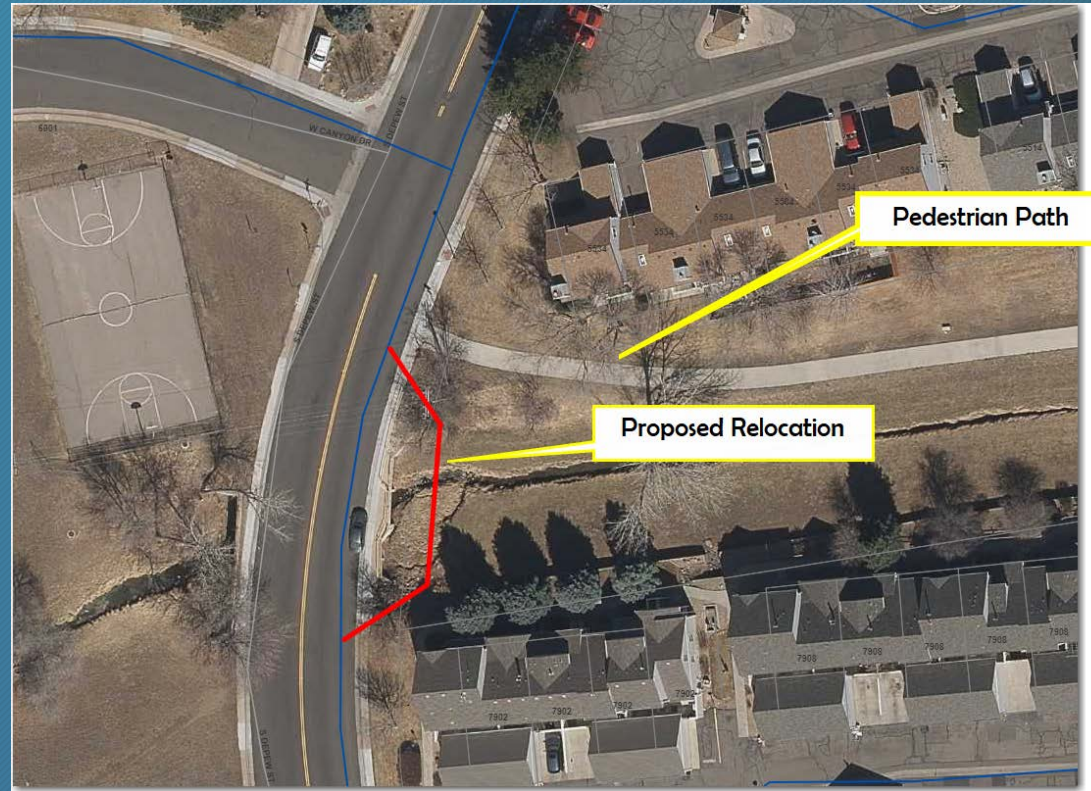
S Depew St between Platte Canyon Rd and W. Canyon Trail. – 1900' of 8" PVC (CIP 21-IW) *Culvert Crossing Pending – Start early October*

➤ *Contract amount \$1,095,832*

- PROJECT NAME: S Depew St & Canyon (Including Massey Draw Culvert Crossing) – 21-3W
- STATUS: In Construction
- SCOPE: 1900' of 8" PVC – 21-3W
- Customer notifications – Website, Nextdoor, Facebook, door to door- regarding traffic and service disruption. Addition notification to Millbrook Townhomes - traffic impact notification – Construction Notification with signs along path
- STATUS: All pipe in street ROW complete – Ditch crossing scheduled 1st week of October



Construction in Depew



Impact to Pedestrian Path

CONSTRUCTION AHEAD

FOR MORE INFORMATION PLEASE VISIT:
www.plattecanyon.org/construction-corner
or call **303-979-2333**



Notification Signage

➤ SWM PROJECTS:

- A. S Holland Wy between W. Arbor Pl and S Garland Ct (CIP 20-IW) 300' of 12" PVC – **In Construction**

➤ *Contract amount \$160,168*

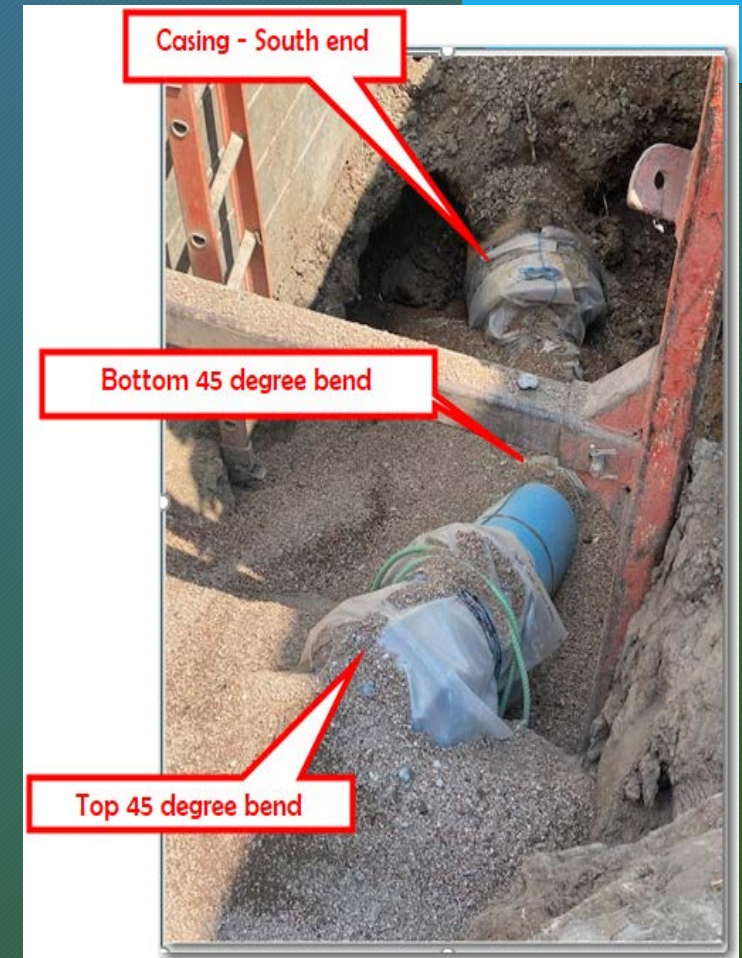
*Dewatering creek
– bypass to
downstream flow*



*Steel casing and
PVC fused
carrier pipe*



Steel casing in trench



South end pipe out of ditch



➤ **Miscellaneous Project Update:**

- Columbine High School Complete
- Littleton 54" Sewer Lining Project – Littleton is using SWM D-Line as a by-pass line – Start October 14th
- Echologics Water Main Condition Assessment – Investigative work complete; results are pending



QUESTIONS?