



## WATER WATCH REPORT

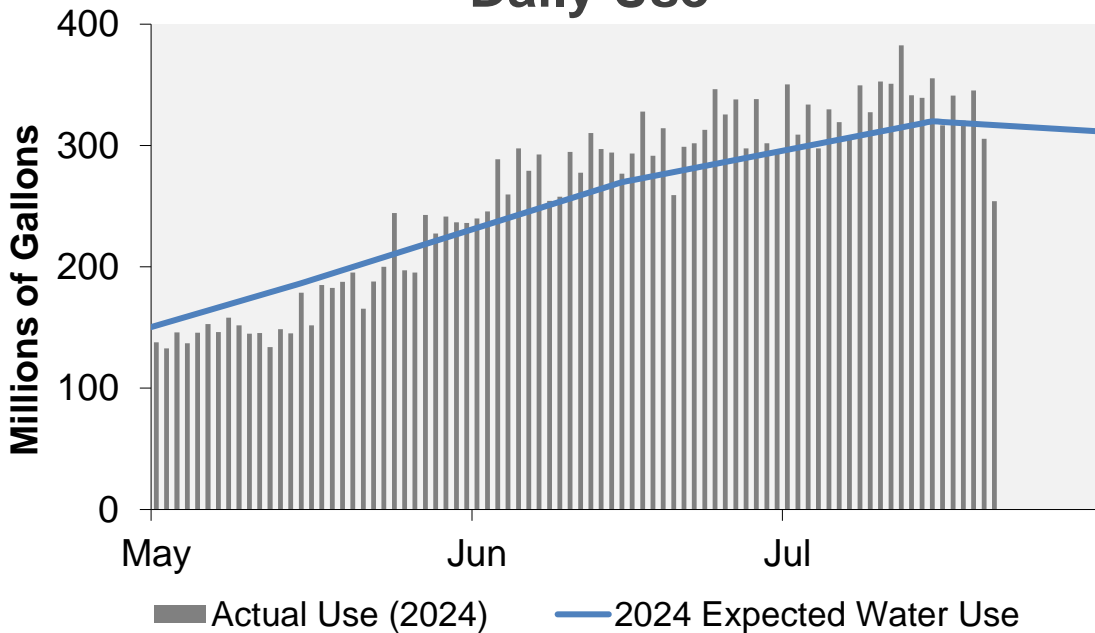
July 22, 2024

### Supply Reservoir Contents

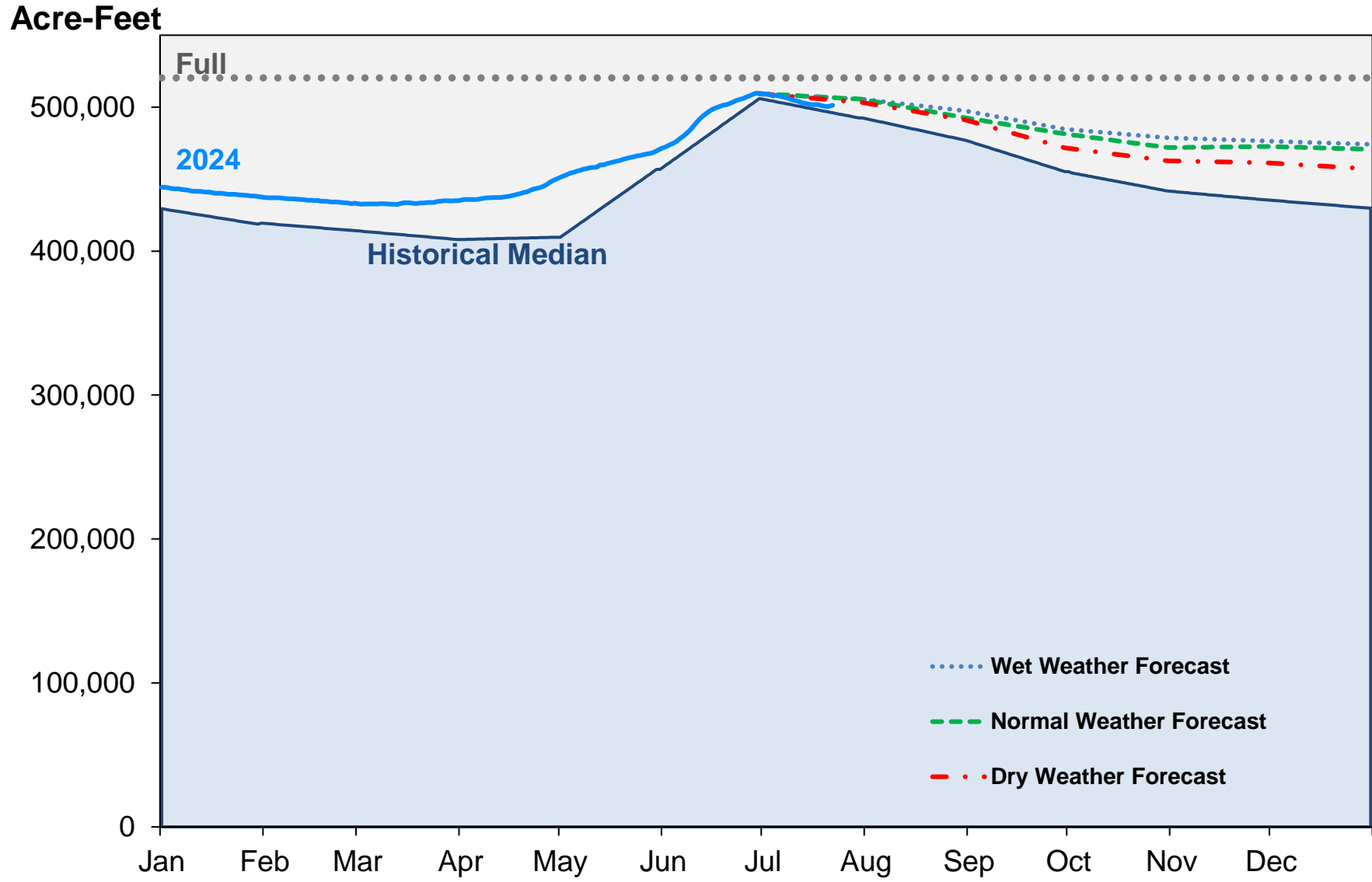
Reservoir	Capacity		Current Usable Contents (acre-feet)	Percent Full		
	(acre-feet)			Current	Last	Historical
	Total	Usable	Year		Median	
Antero	20,122	20,067	20,349	101%	100%	100%
Eleven Mile	97,779	97,779	101,073	103%	101%	103%
Cheesman	79,064	79,064	74,541	94%	98%	99%
Marston	19,108	13,133	10,152	77%	73%	76%
Strontia Springs	7,863	7,163	6,640	93%	97%	94%
Chatfield	28,709	12,415	11,076	89%	100%	76%
Dillon	257,304	249,095	250,238	100%	101%	100%
Gross*	41,811	29,811	16,020	54%	53%	95%
Ralston	10,776	7,276	7,033	97%	88%	92%
Meadow Creek	5,370	4,520	4,146	92%	94%	89%
<b>Total</b>	<b>567,906</b>	<b>520,323</b>	<b>501,268</b>	<b>96%</b>	<b>97%</b>	<b>96%</b>

\*Gross Reservoir storage is limited to 29,938 acre feet in total storage during construction activities. The percent full figures are based on the normal usable capacity of 29,811 acre feet.

### Daily Use



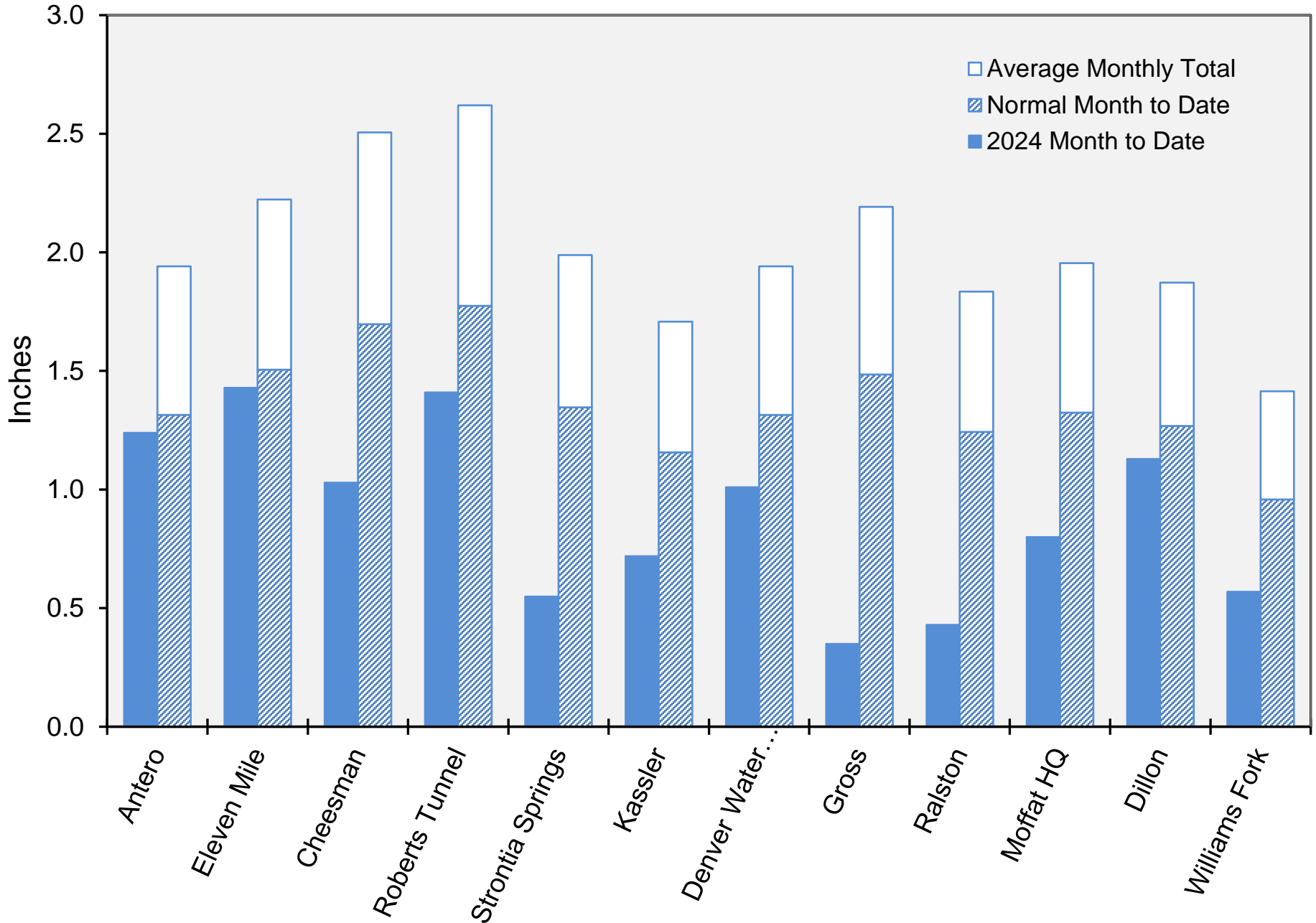
# Supply Reservoir Contents



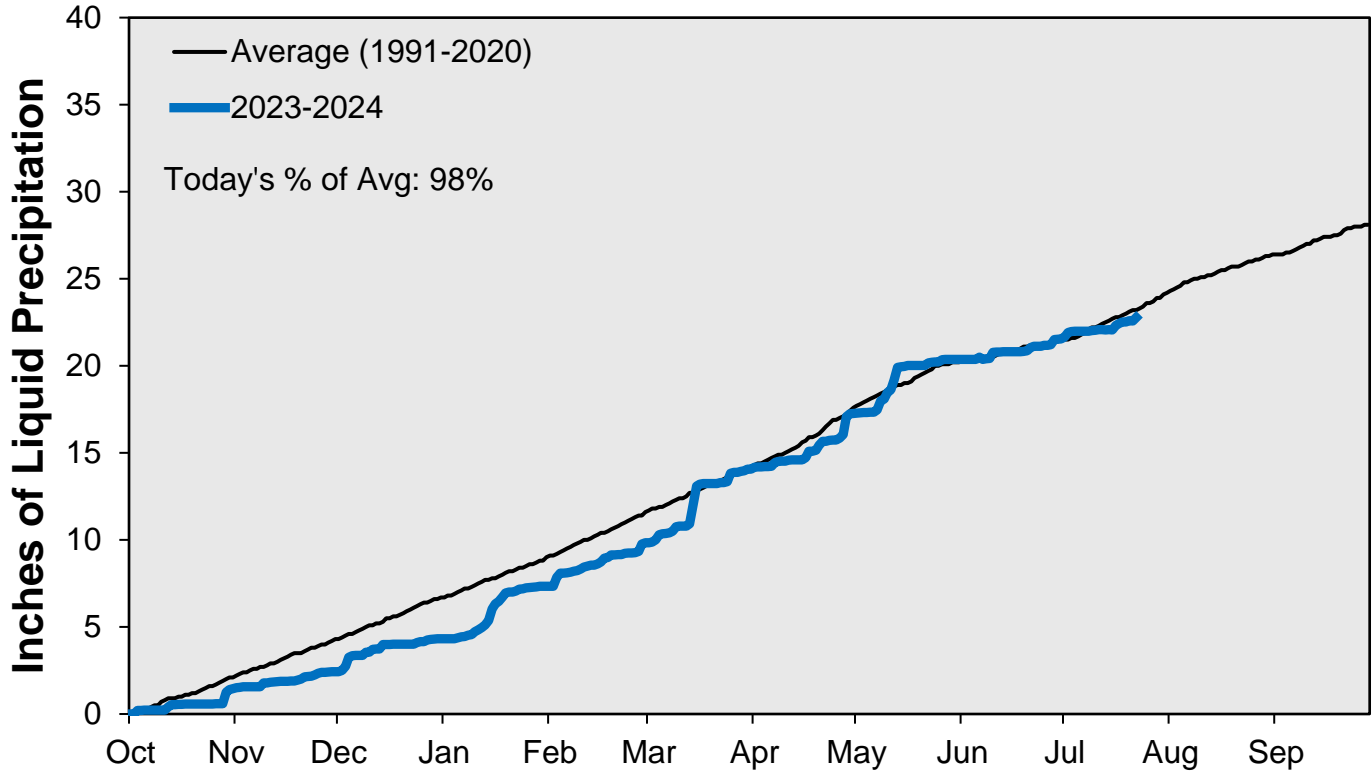
Note: Denver Water forecasts seasonal reservoir storage contents under dry future weather, normal future weather and wet future weather scenarios.

Gross Reservoir storage is limited to 29,938 acre feet in total storage during construction activities. The percent full figures are based on the normal usable capacity of 29,811 acre feet.

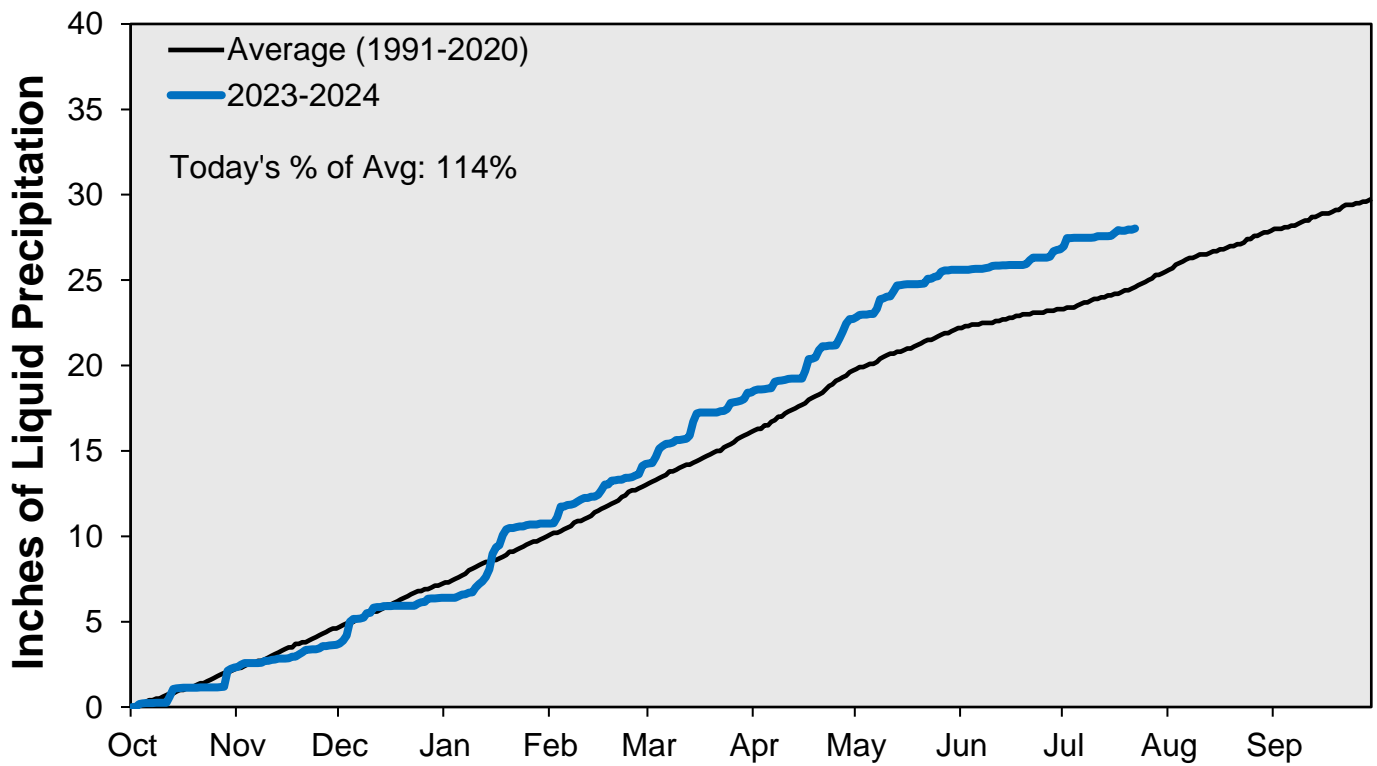
# July Precipitation



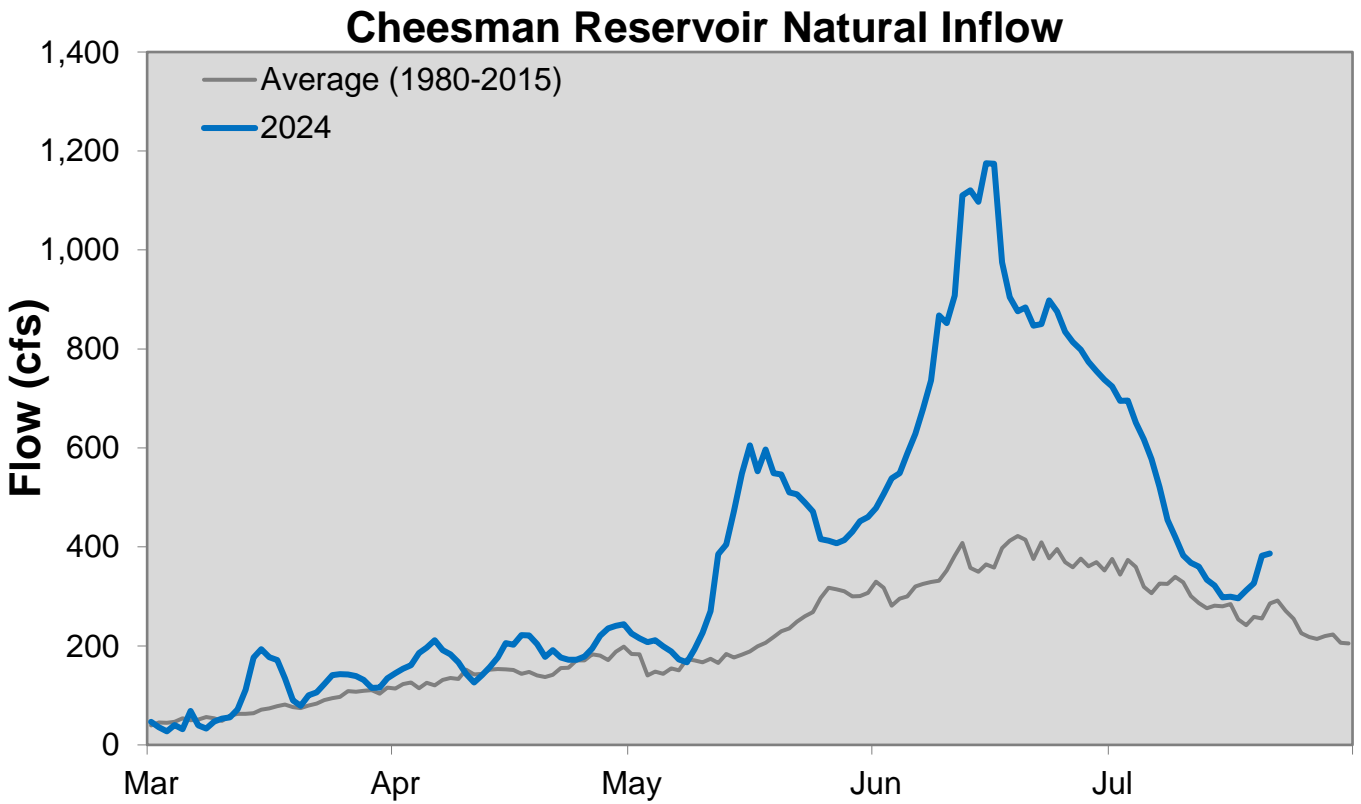
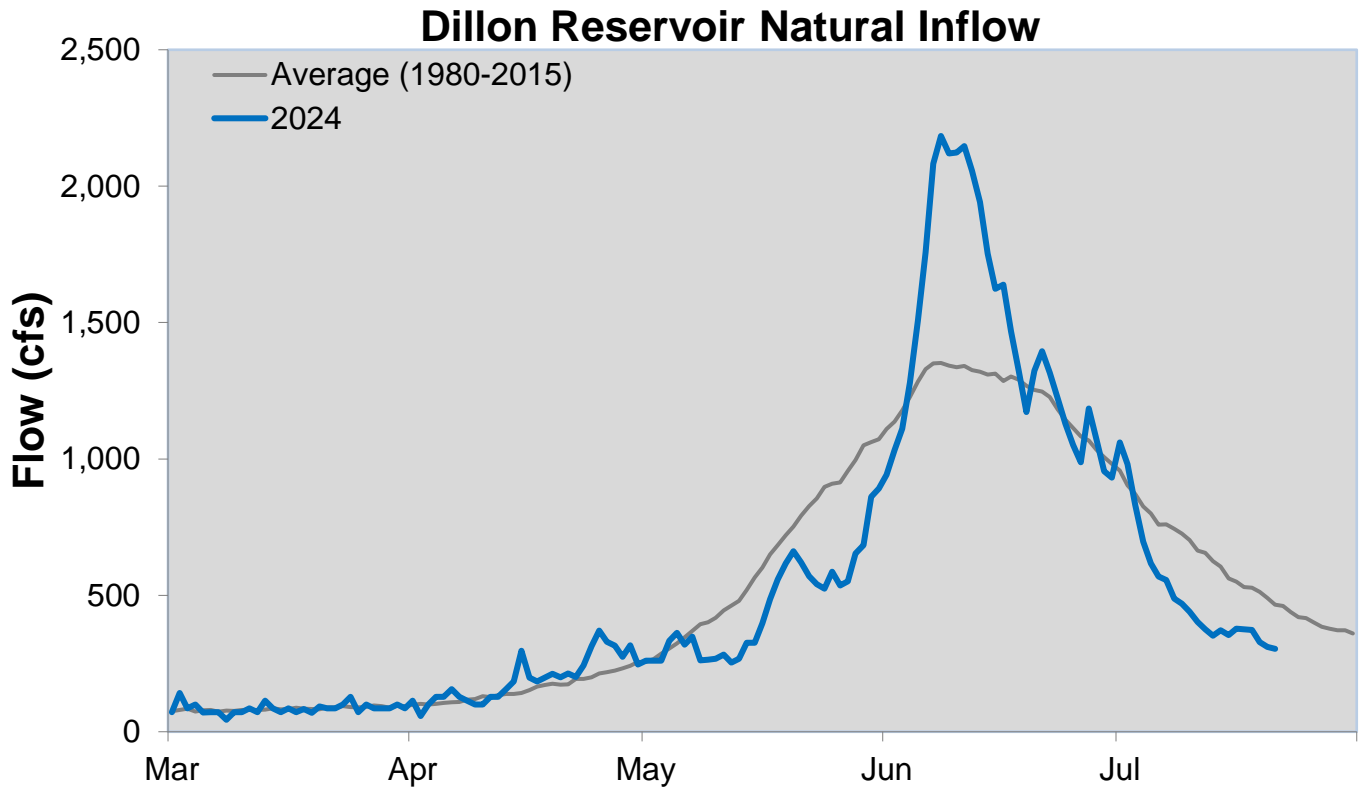
### Cumulative Precipitation: South Platte River



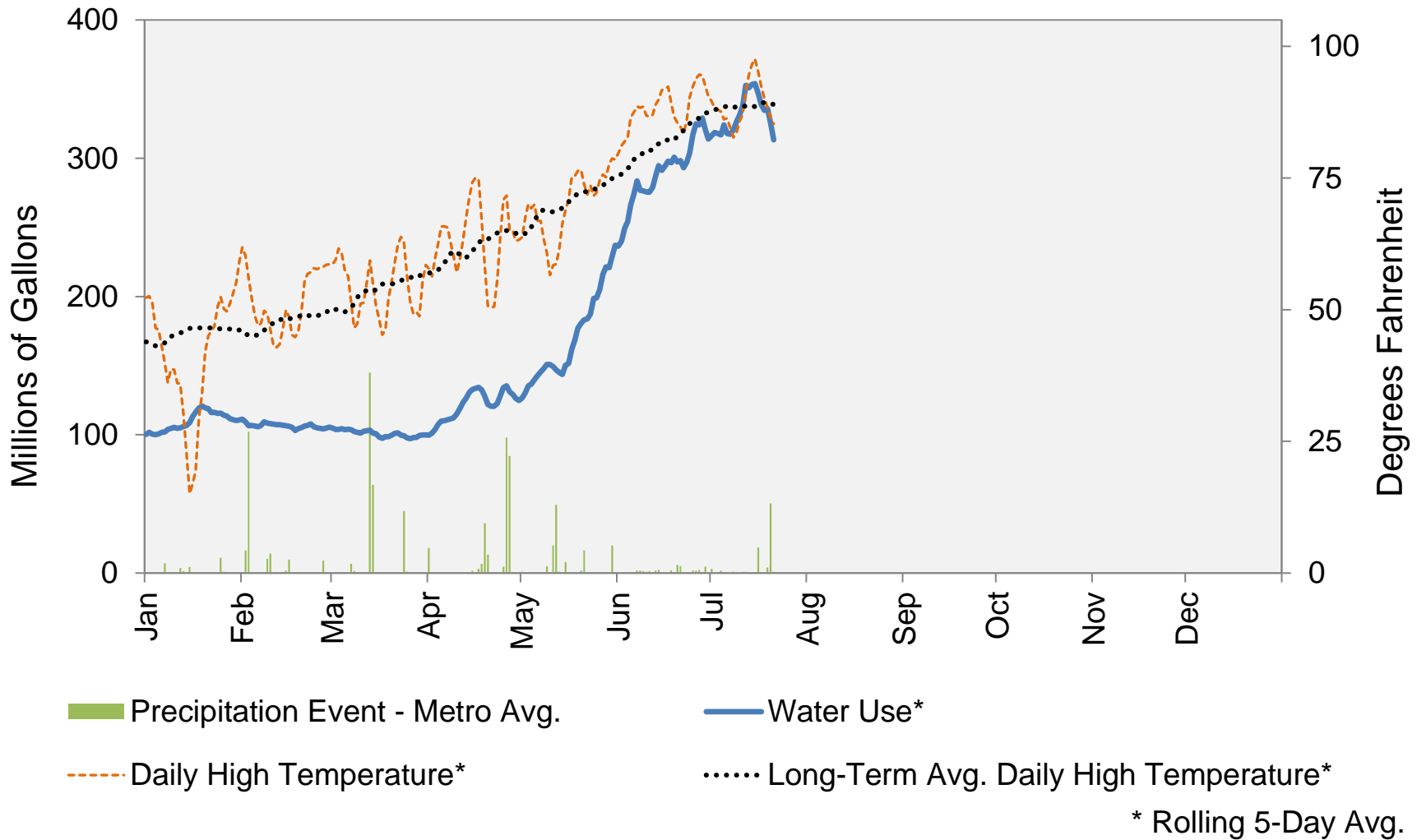
### Cumulative Precipitation: Colorado River



July 22, 2024



## 2024 Water Use and Weather Conditions



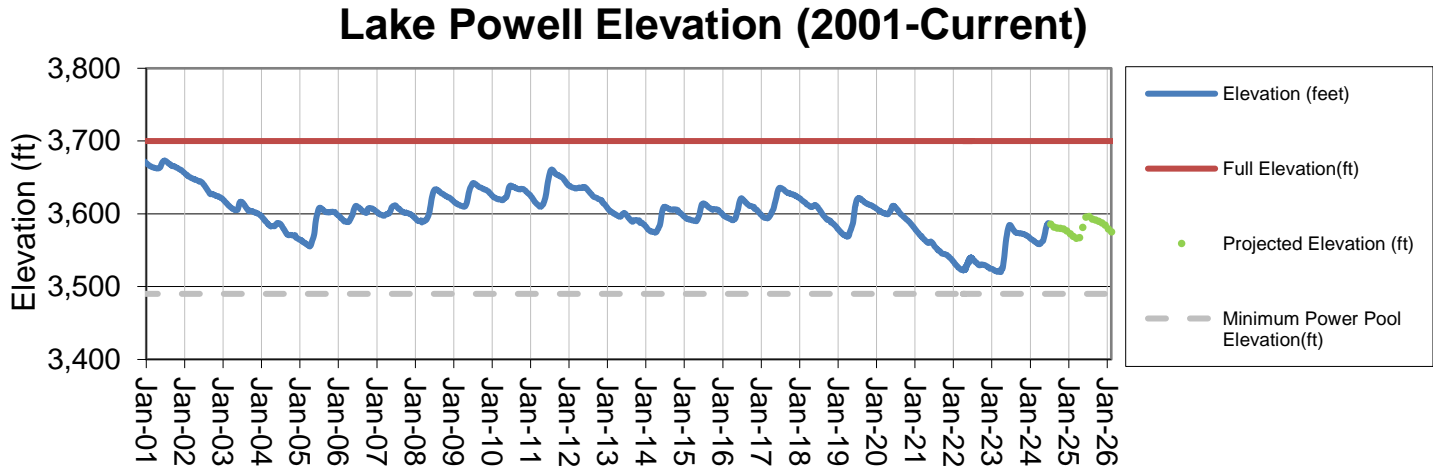
July 22, 2024

### Denver Water Use and Reservoir Contents 2024

	Jan	Feb	Mar	Apr	May	Jun	Jul	Aug	Sep	Oct	Nov	Dec	YTD-Avg
Predicted End-of-Month Supply Reservoir Contents (Full = 520,323 AF)	499,800												
Actual End-of-Month Supply Reservoir Contents (AF)	437,644	433,227	435,044	450,216	470,851	509,386							
Actual % Full	84%	84%	84%	87%	91%	98%							
Historical Median % Full	81%	80%	79%	79%	88%	98%	95%	92%	88%	85%	84%	83%	
2024 Expected Daily Use (MG)	105	105	104	120	190	267	312	304	277	170	111	105	165
Actual Daily Use (MG)	1	97	111	101	103	138	240	350					
	2	105	104	103	106	133	246	309					
	3	93	95	102	112	146	289	334					
	4	103	112	110	117	137	260	298					
	5	105	109	103	112	146	298	330					
	6	102	108	103	104	153	279	319					
	7	107	109	101	109	146	293	306					
	8	103	108	96	115	158	254	350					
	9	106	108	106	121	152	258	327					
	D 10	109	108	100	126	145	295	353					
	A 11	98	106	109	125	145	278	351					
	Y 12	109	106	103	131	134	310	383					
	13	107	109	98	130	149	297	342					
	O 14	110	106	95	141	145	294	339					
	F 15	119	105	99	137	179	277	355					
	16	121	104	96	129	152	293	317					
	M 17	124	102	98	135	185	328	341					
	O 18	122	98	105	120	183	292	321					
	N 19	117	113	95	120	188	314	345					
	T 20	113	109	104	106	195	259	306					
	H 21	118	110	103	122	166	299	254					
	22	110	104	100	136	188	302						
	23	123	104	97	130	200	313						
	24	113	102	93	146	244	346						
	25	114	105	96	136	197	326						
	26	110	108	100	129	195	338						
	27	108	103	104	114	243	298						
	28	113	107	98	120	228	338						
	29	109	106	99	131	242	302						
	30	111		98	129	237	294						
	31	112		100		236							
Monthly Average	110	106	100	123	177	294	330						170
% of 2024 Expected Daily Use	105%	101%	97%	103%	93%	110%	106%						103%

Notes: 1) "AF" denotes acre-feet. "MG" denotes million gallons. 2) Expected Daily Use is based on historical use with normal weather conditions. 3) The predicted end-of-month supply reservoir contents figures assume normal weather after July 1<sup>st</sup>, 2024. 4) The differences between predicted and actual end-of-month supply reservoir contents are the result of normal estimation error of daily use, supply, evaporation, carriage losses and raw water deliveries. 5) Predicted supply reservoir contents last updated on July 1<sup>st</sup>, 2024. 6) Daily water figures are subject to change.

# Lake Powell Report\*



\* Denver Water gets half of its water supply from the Colorado River and closely monitors conditions at Lake Powell and within the greater Colorado River Basin.