



WATER WATCH REPORT

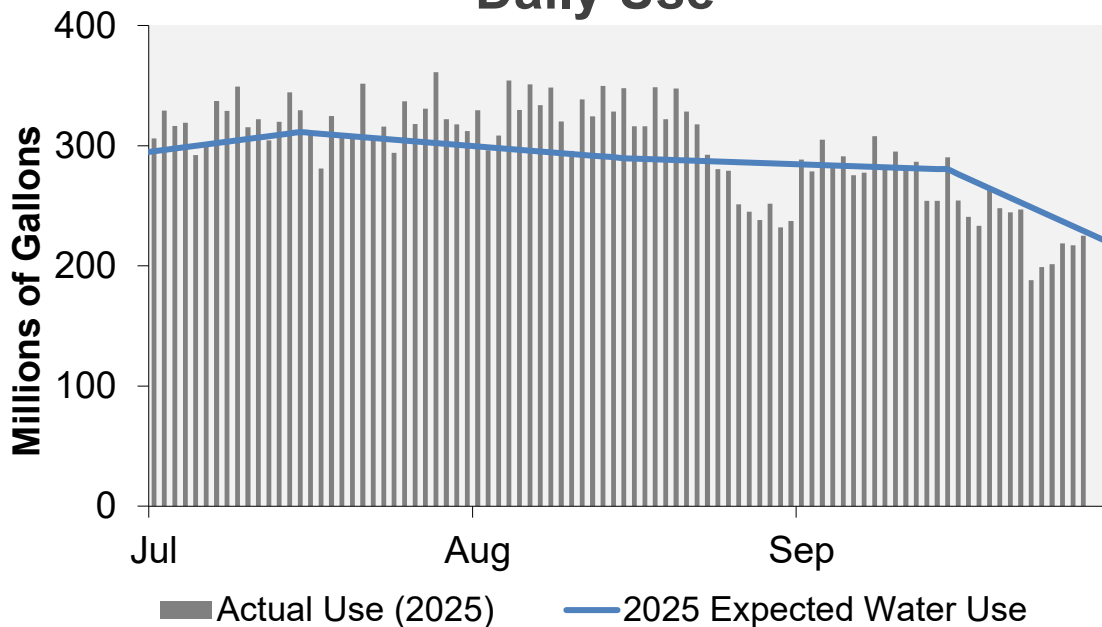
September 29, 2025

Supply Reservoir Contents

Reservoir	Capacity (acre-feet)		Current Usable Contents (acre-feet)	Percent Full		
	Total	Usable		Current	Last Year	Historical Median
Antero	20,122	19,826	18,480	93%	88%	99%
Eleven Mile	97,779	97,779	100,209	102%	102%	102%
Cheesman	79,064	79,064	68,295	86%	92%	86%
Marston	19,108	12,985	9,149	70%	85%	50%
Strontia Springs	7,863	7,163	6,486	91%	83%	93%
Chatfield	28,709	12,415	9,830	79%	40%	48%
Dillon	257,304	249,095	207,621	83%	90%	96%
Gross*	41,811	29,811	12,485	42%	41%	79%
Ralston	10,776	7,276	6,543	90%	90%	71%
Meadow Creek	5,370	4,520	-	0%	13%	44%
Total	567,906	519,934	439,097	84%	87%	88%

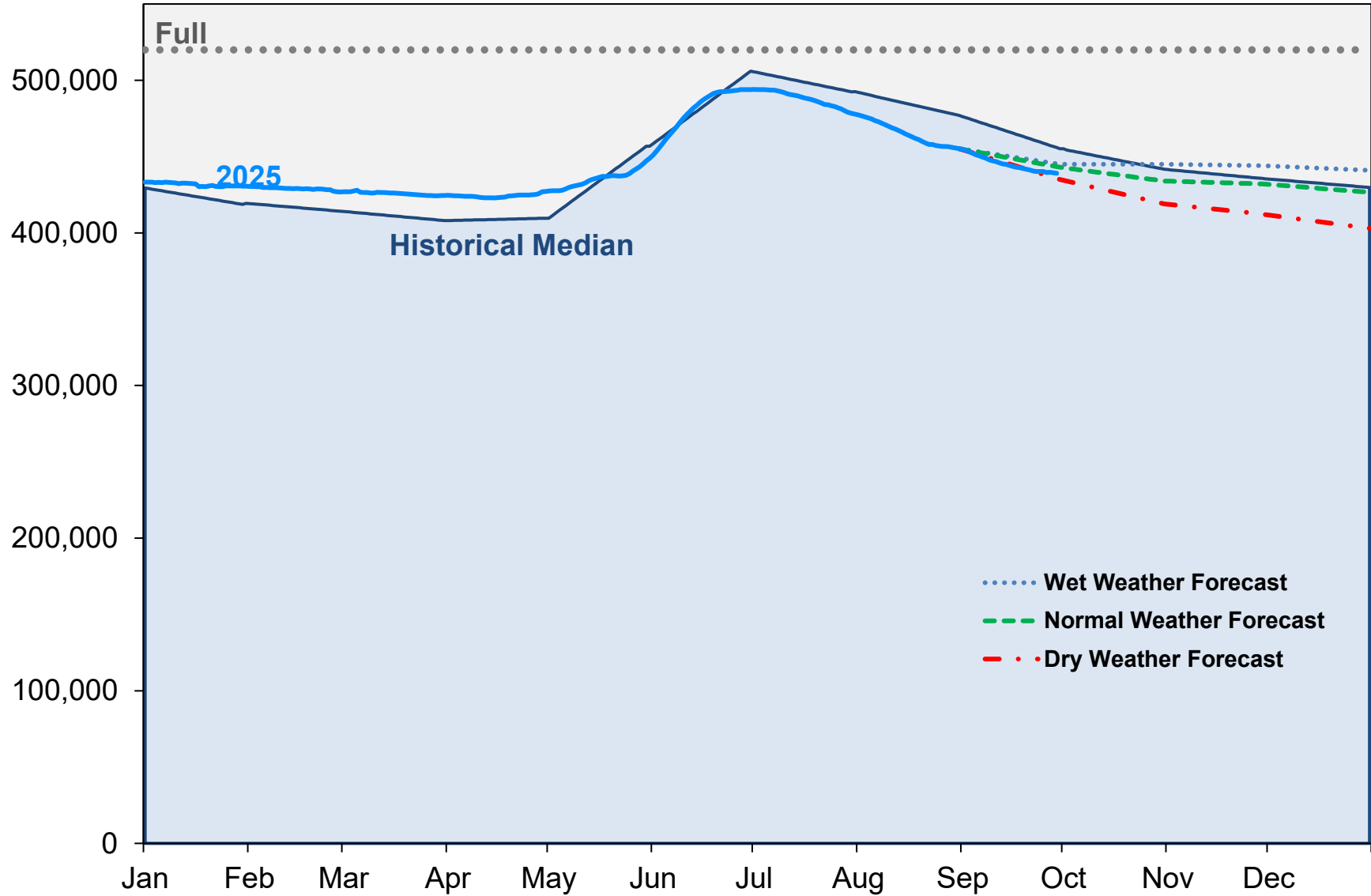
*Gross Reservoir storage is limited to 29,938 acre feet in total storage during construction activities. The percent full figures are based on the normal usable capacity of 29,811 acre feet.

Daily Use

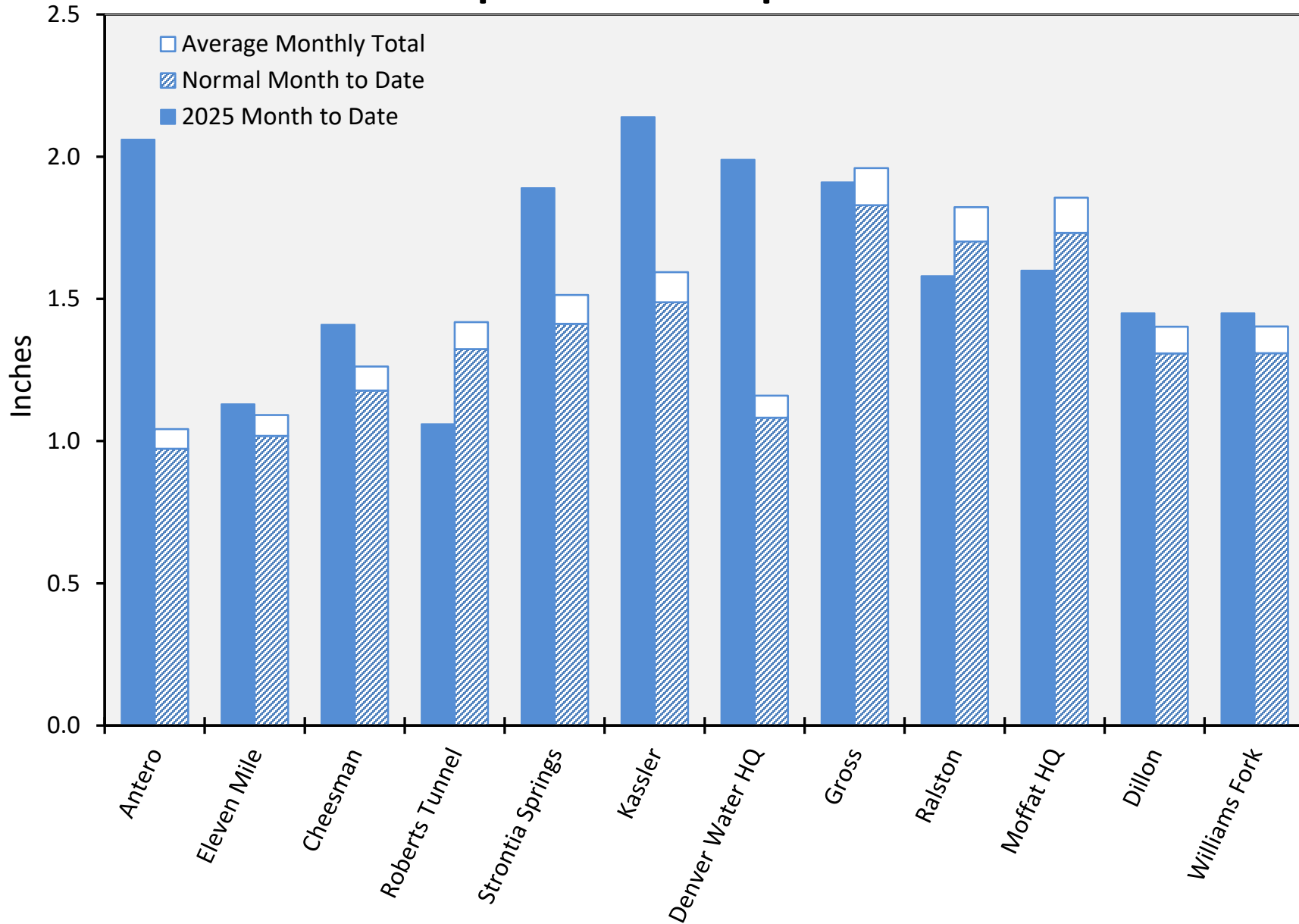


Supply Reservoir Contents

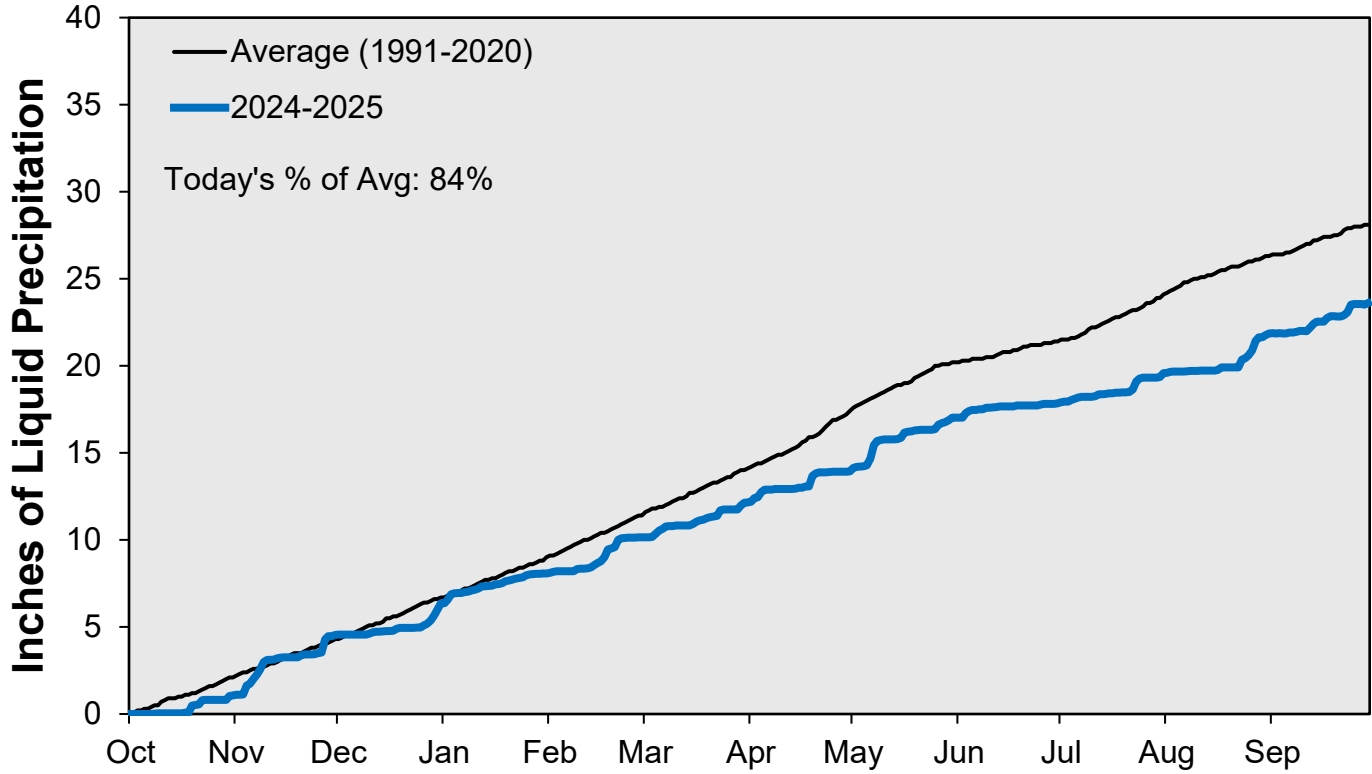
Acre-Feet



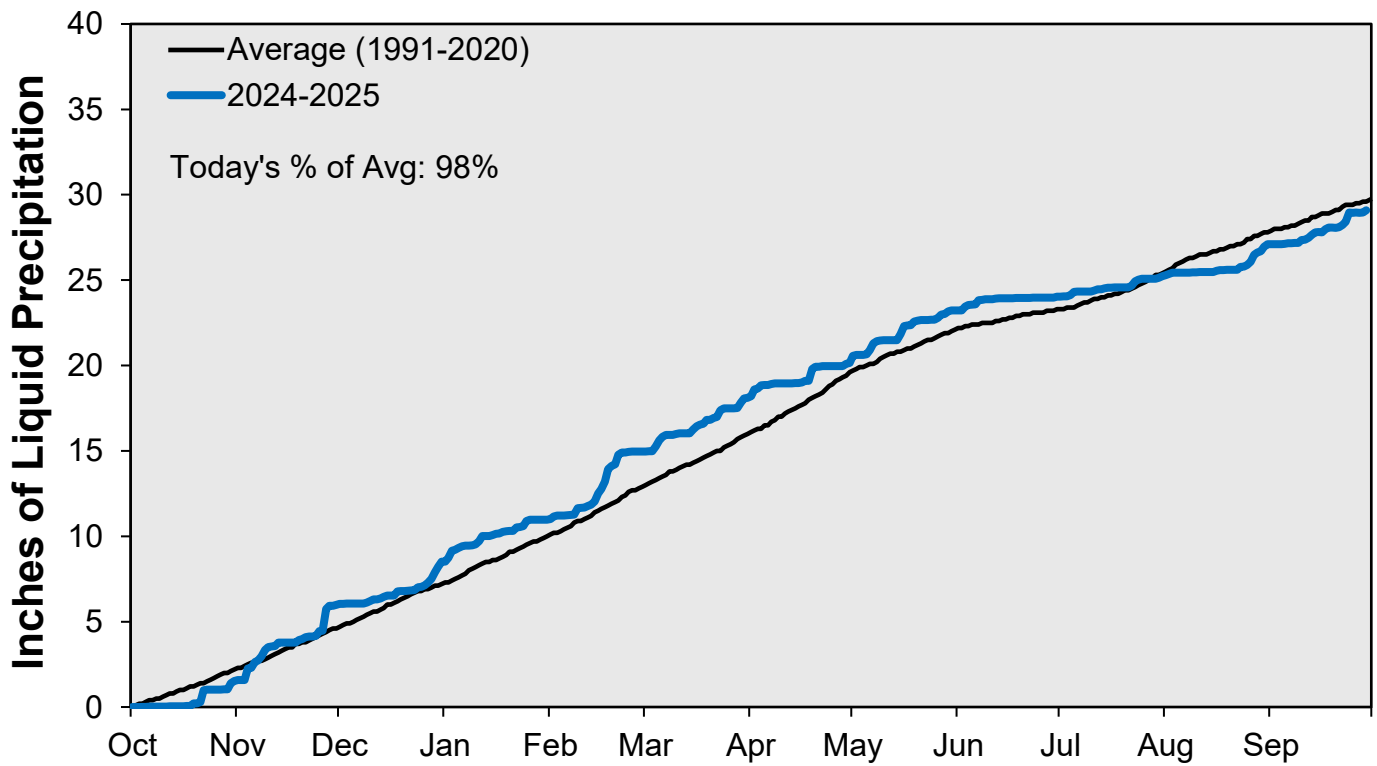
September Precipitation



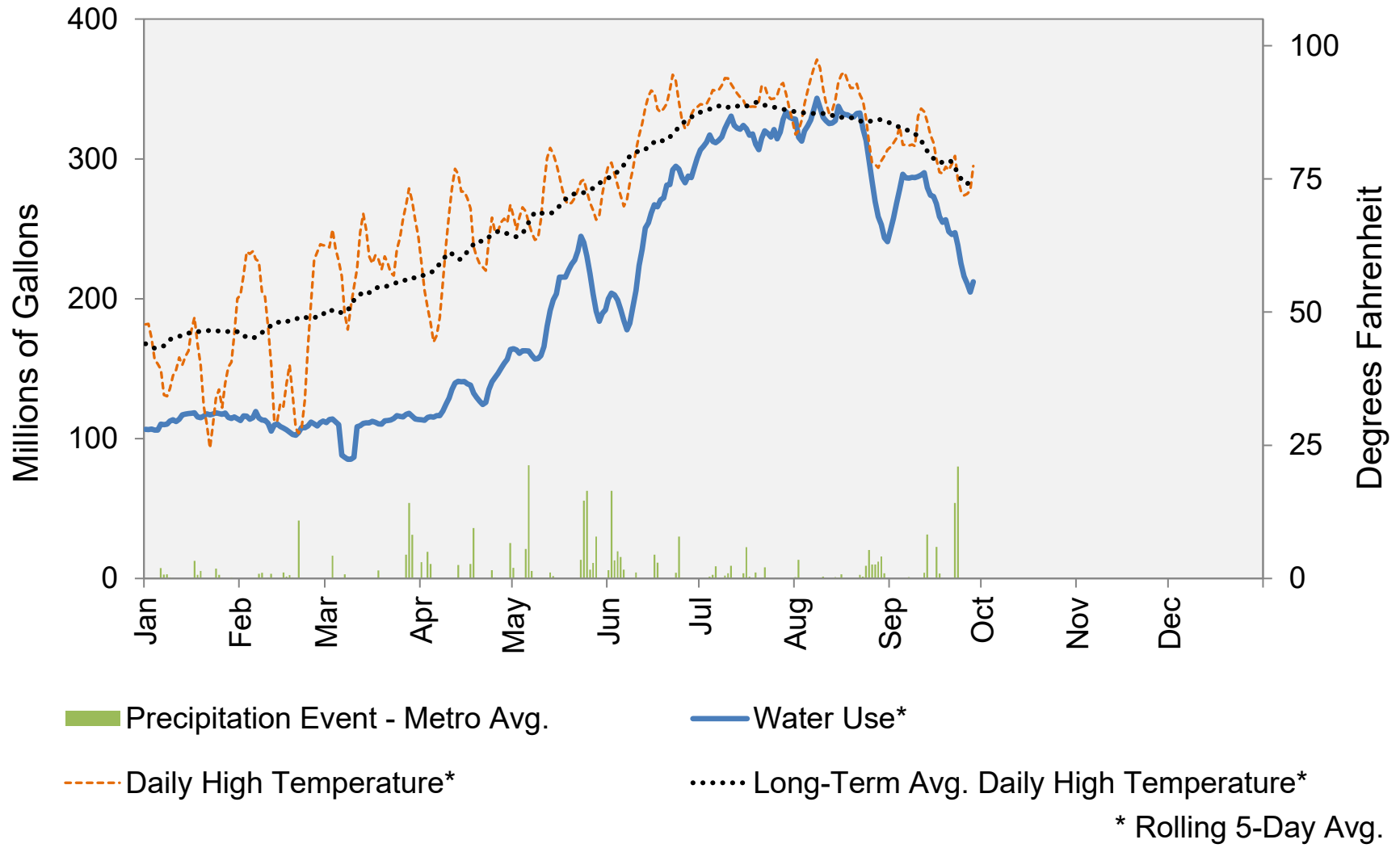
Cumulative Precipitation: South Platte River



Cumulative Precipitation: Colorado River



2025 Water Use and Weather Conditions

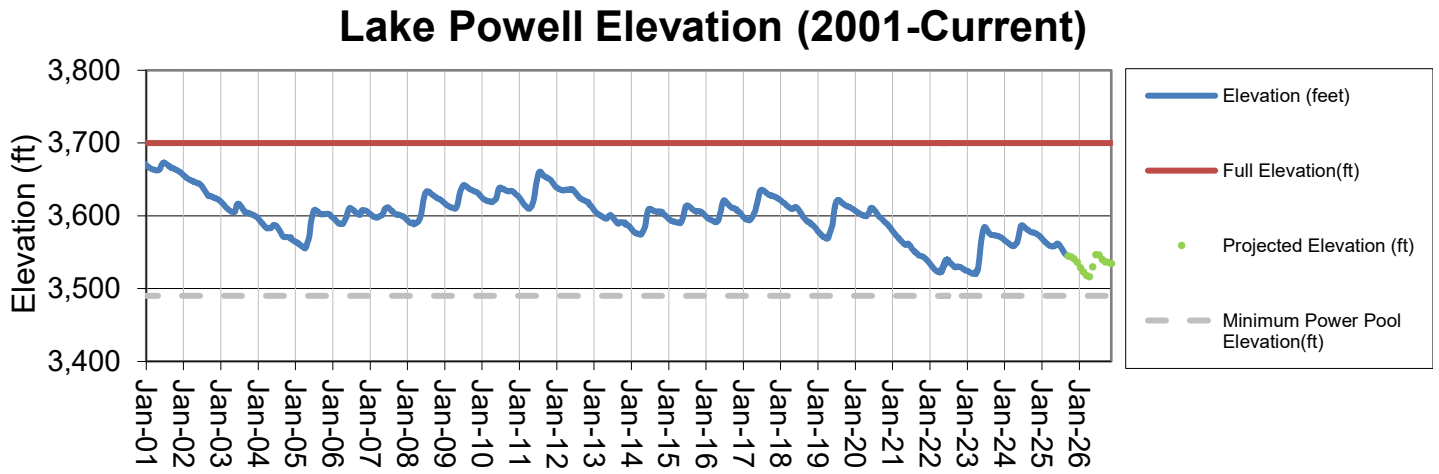


September 29, 2025

Denver Water Use and Reservoir Contents 2025														
	Jan	Feb	Mar	Apr	May	Jun	Jul	Aug	Sep	Oct	Nov	Dec	YTD-Avg	
Predicted End-of-Month Supply Reservoir Contents (Full = 520,323 AF)	451,400													
Actual End-of-Month Supply Reservoir Contents (AF)	430,582	426,765	424,550	427,080	448,806	493,853	477,883	455,167						
Actual % Full	83%	82%	82%	82%	87%	95%	92%	88%						
Historical Median % Full	81%	80%	79%	79%	88%	98%	95%	92%	88%	85%	84%	83%		
2025 Expected Daily Use (MG)	105	105	104	119	175	269	304	289	266	167	108	102	193	
Actual Daily Use (MG)	1	98	113	108	117	148	214	306	329	288				
	2	110	117	116	117	158	220	329	296	279				
	3	110	114	113	118	165	172	316	308	305				
	4	103	113	107	113	172	185	319	354	282				
	5	110	117	105	111	171	170	292	330	291				
	6	119	135	109	122	148	175	301	351	275				
	7	108	94	108	117	142	187	337	334	277				
	8	111	107	106	135	152	195	329	348	308				
	9	115	112	107	137	174	244	349	320	281				
D	10	114	106	112	134	181	229	315	296	295				
A	11	113	107	109	152	181	265	322	338	281				
Y	12	116	117	112	141	214	246	305	324	286				
	13	127	110	115	141	209	271	320	350	254				
O	14	118	103	109	135	212	262	344	328	254				
F	15	116	101	112	135	202	263	329	348	290				
	16	113	100	115	144	241	295	310	316	254				
M	17	118	109	108	136	214	238	281	316	241				
O	18	113	103	109	113	209	296	325	349	233				
N	19	115	100	107	120	237	269	307	322	263				
T	20	121	110	124	120	224	309	309	348	248				
H	21	121	119	116	132	255	296	351	328	245				
	22	115	107	110	144	246	292	307	318	247				
	23	116	109	115	160	262	308	316	292	188				
	24	120	114	118	148	215	258	294	280	199				
	25	118	104	121	136	175	279	337	279	201				
	26	119	112	114	145	192	278	318	251	219				
	27	120	118	118	163	174	316	331	245	217				
	28	100	115	119	177	200	302	361	238	225				
	29	116		108	163	178	293	322	252					
	30	124		110	171	203	315	318	232					
	31	112		113		204		312	237					
Monthly Average	114	110	112	137	195	255	320	308	258					201
% of 2025 Expected Daily Use	109%	105%	108%	115%	112%	95%	105%	107%	97%					104%

Notes: 1) "AF" denotes acre-feet. "MG" denotes million gallons. 2) Expected Daily Use is based on historical use with normal weather conditions. 3) The predicted end-of-month supply reservoir contents figures assume normal weather after September 2nd, 2025. 4) The differences between predicted and actual end-of-month supply reservoir contents are the result of normal estimation error of daily use, supply, evaporation, carriage losses and raw water deliveries. 5) Predicted supply reservoir contents last updated on September 2nd, 2025. 6) Daily water figures are subject to change.

Lake Powell Report*



* Denver Water gets half of its water supply from the Colorado River and closely monitors conditions at Lake Powell and within the greater Colorado River Basin.