

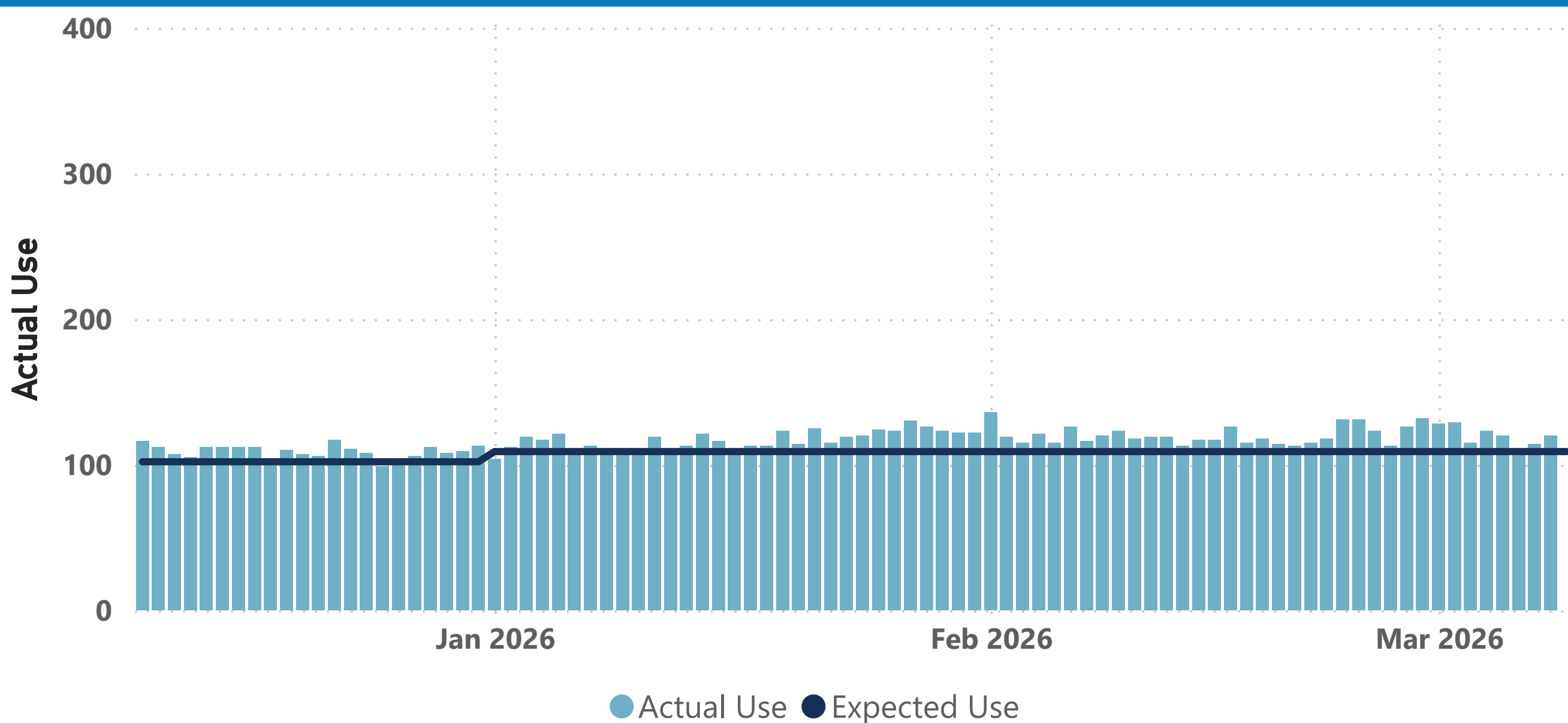


### Supply Reservoir Contents

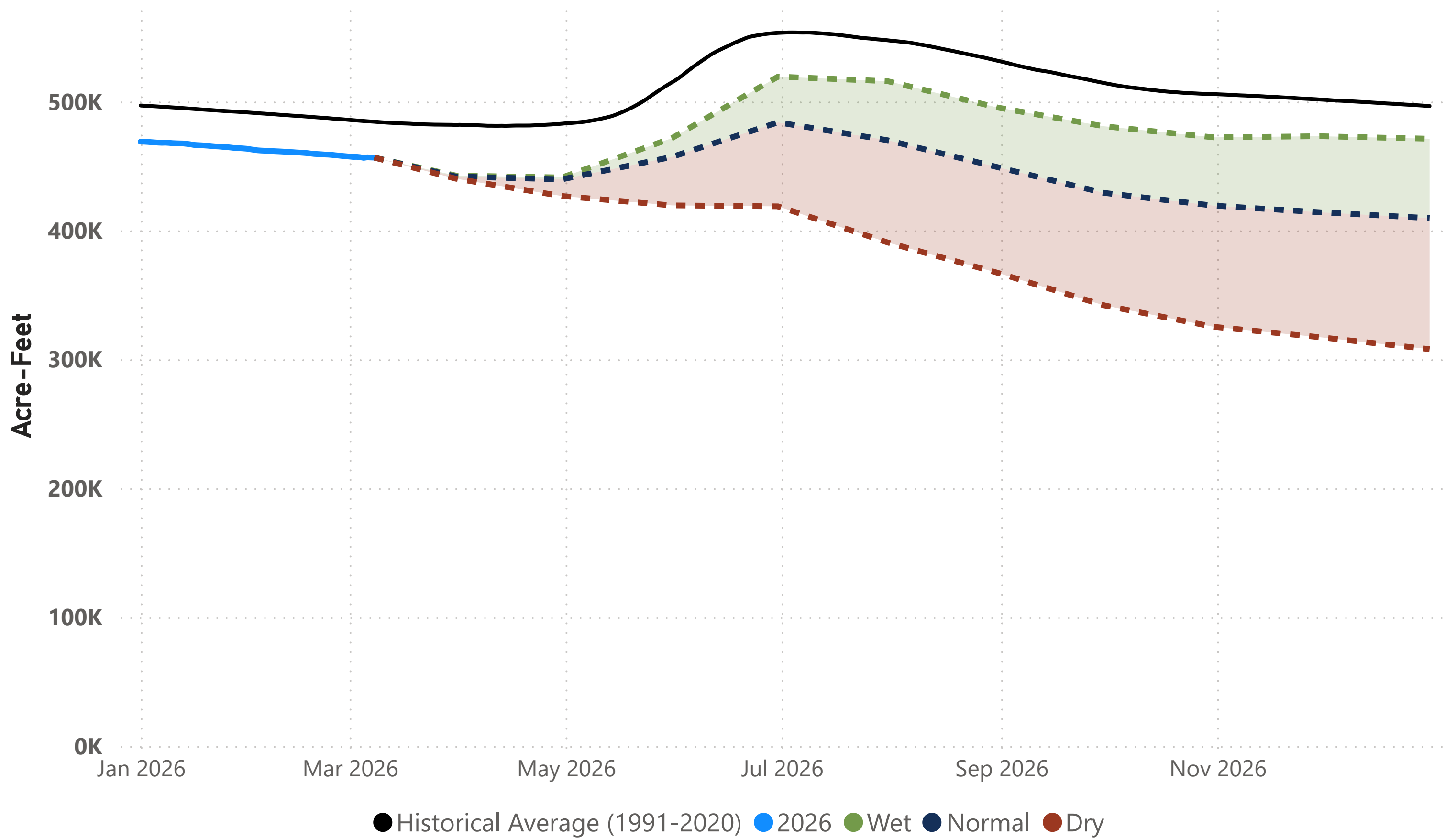
Reservoir	Current Contents	Last Year Contents	Reservoir Capacity	Current % Full	Last Year % Full	Hist Avg % Full
Antero	18,376	18,964	20,122	91	94	77
Chatfield	28,451	28,650	30,342	93	94	87
Cheesman	62,955	72,411	79,064	79	92	80
Dillon	196,954	205,355	257,304	76	80	87
Eleven Mile	99,315	99,933	97,779	101	102	102
Gross*	19,932	16,934	41,811	47	41	62
Marston	16,513	16,135	19,108	86	84	67
Meadow Creek	283	608	5,370	5	11	34
Ralston	6,677	8,589	10,776	61	80	72
Strontia Springs	7,018	7,064	7,863	89	90	91
<b>TOTAL</b>	<b>456,474</b>	<b>474,642</b>	<b>569,539</b>	<b>80</b>	<b>83</b>	<b>85</b>

Note: \*Gross Reservoir storage is limited to 29,938 acre feet in total storage during construction activities.

### Daily Use – Actual vs. Expected



Total Supply Reservoir Contents and Forecasts



Notes: 1) Total system supply reservoir contents are shown in acre-feet (AF). 2) The solid blue line represents actual 2026 storage to date. 3) The dotted lines represent the **most probable forecast, wet conditions, and dry conditions** based on current conditions.

2026 Denver Water Daily Use Heatmap

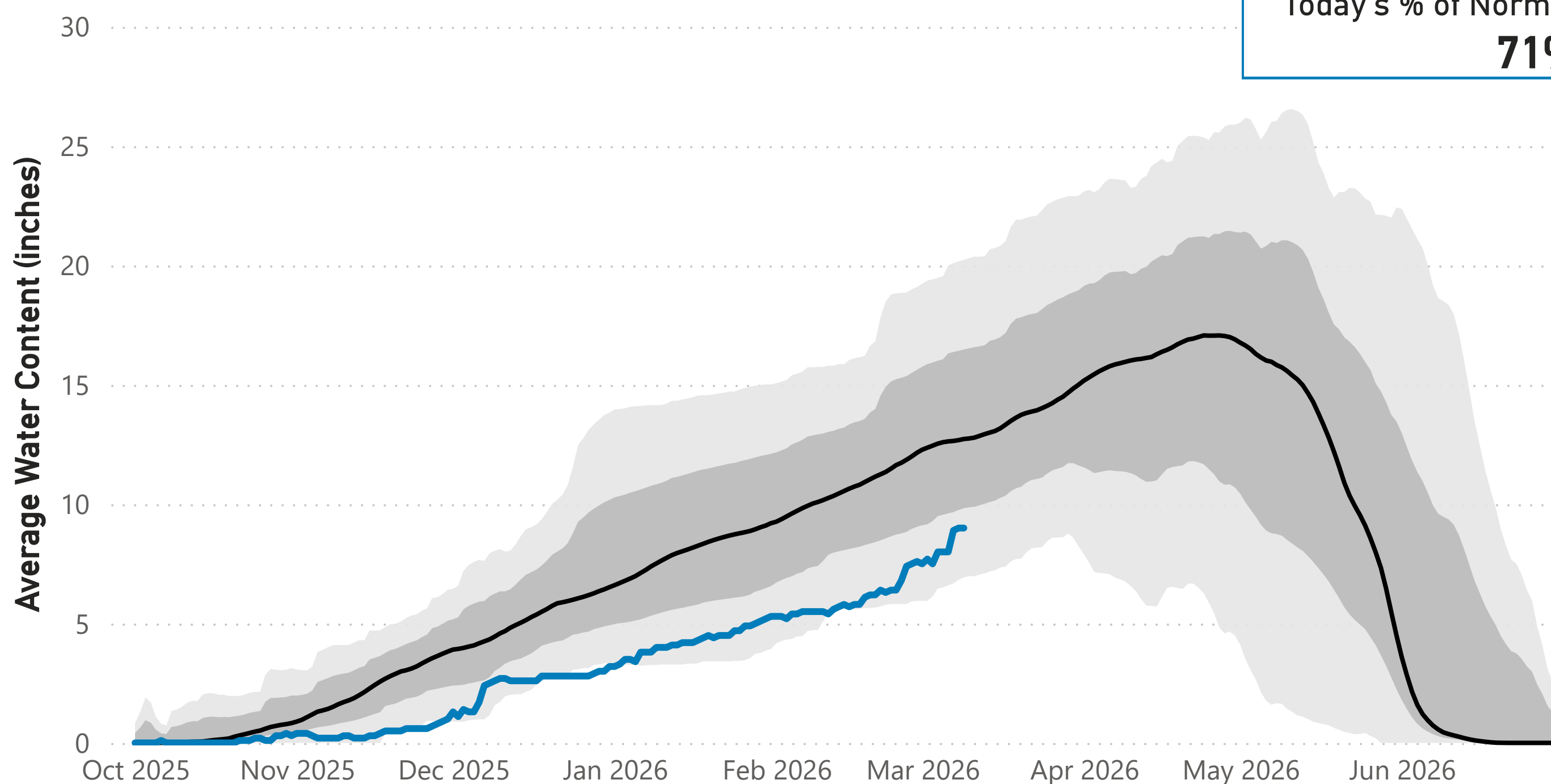
Day of Month	Jan	Feb	Mar	Apr	May	Jun	Jul	Aug	Sep	Oct	Nov	Dec	
1	104	136	128										
2	112	119	129										
3	119	115	115										
4	117	121	123										
5	121	115	120										
6	110	126	111										
7	113	116	114										
8	109	120	120										
9	107	123											
10	111	118											
11	119	119											
12	111	119											
13	113	113											
14	121	117											
15	116	117											
16	110	126											
17	113	115											
18	113	118											
19	123	114											
20	114	113											
21	125	115											
22	115	118											
23	119	131											
24	120	131											
25	124	123											
26	123	113											
27	130	126											
28	126	132											
29	123												
30	122												
31	122												
													YTD-Avg
% of Expected Daily Use	107	110	110										109
Expected Daily Use	109	109	109	120	175	261	300	288	263	170	114	107	109
Monthly Average	117	120	120										119

Notes: 1) Values are in million gallons (MG). 2) Expected Daily Use is based on historical use with normal weather conditions. 3) Cell colors represent deviations from **daily** expected use: **white** = expected, **red** = above expected, **blue** = below expected. 4) Values are daily totals by calendar day and month 2026.

## Snowpack: Colorado River Watershed

● Median (1991-2020) ● Historical Range (1980-2025) ● 2025-2026

Today's % of Normal  
**71%**

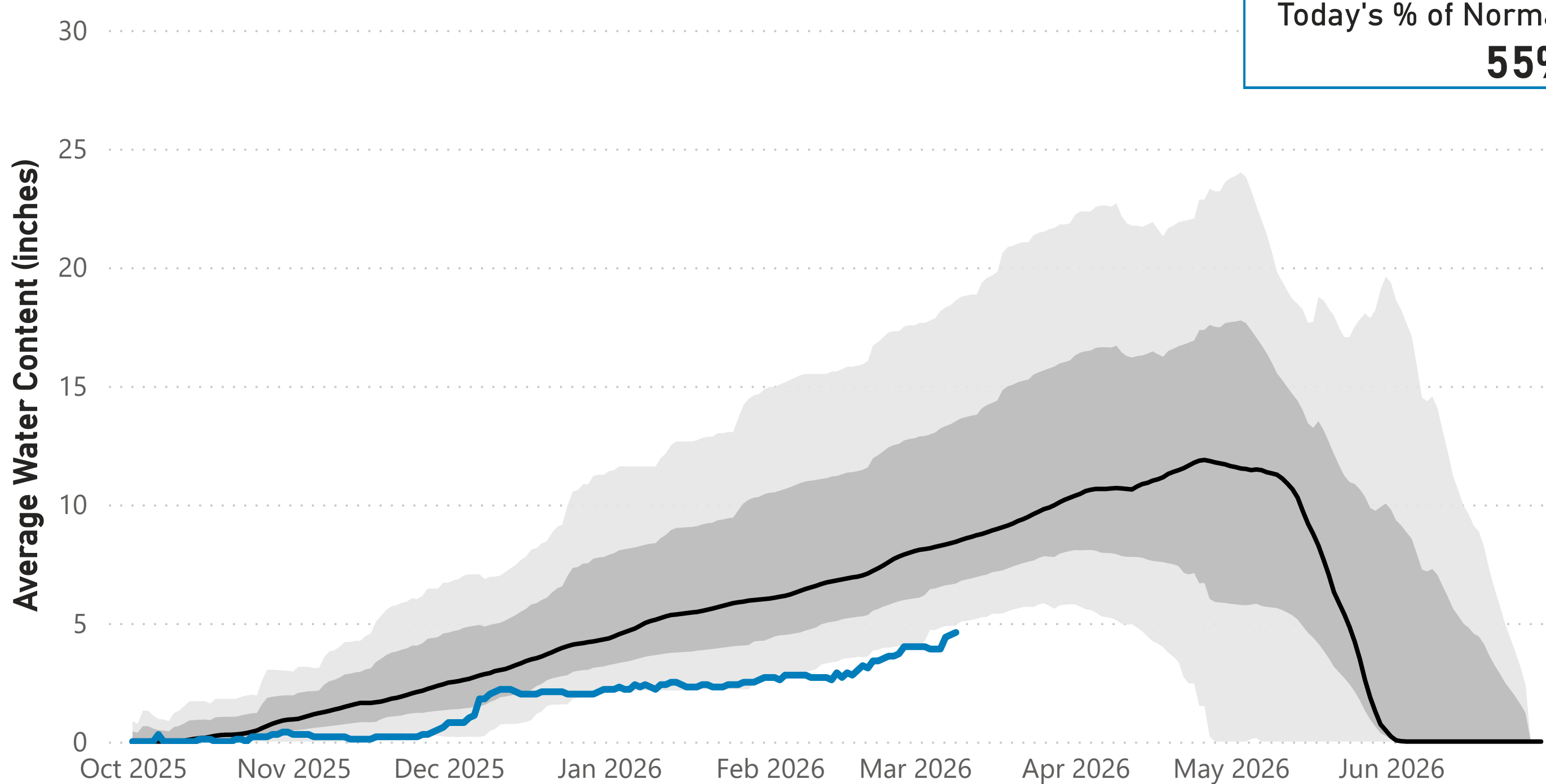


Data are from the 9 SNOTEL stations above Denver Water's Upper Colorado River diversion facilities.

## Snowpack: South Platte River Watershed

● Median (1991-2020) ● Historical Range (1980-2025) ● 2025-2026

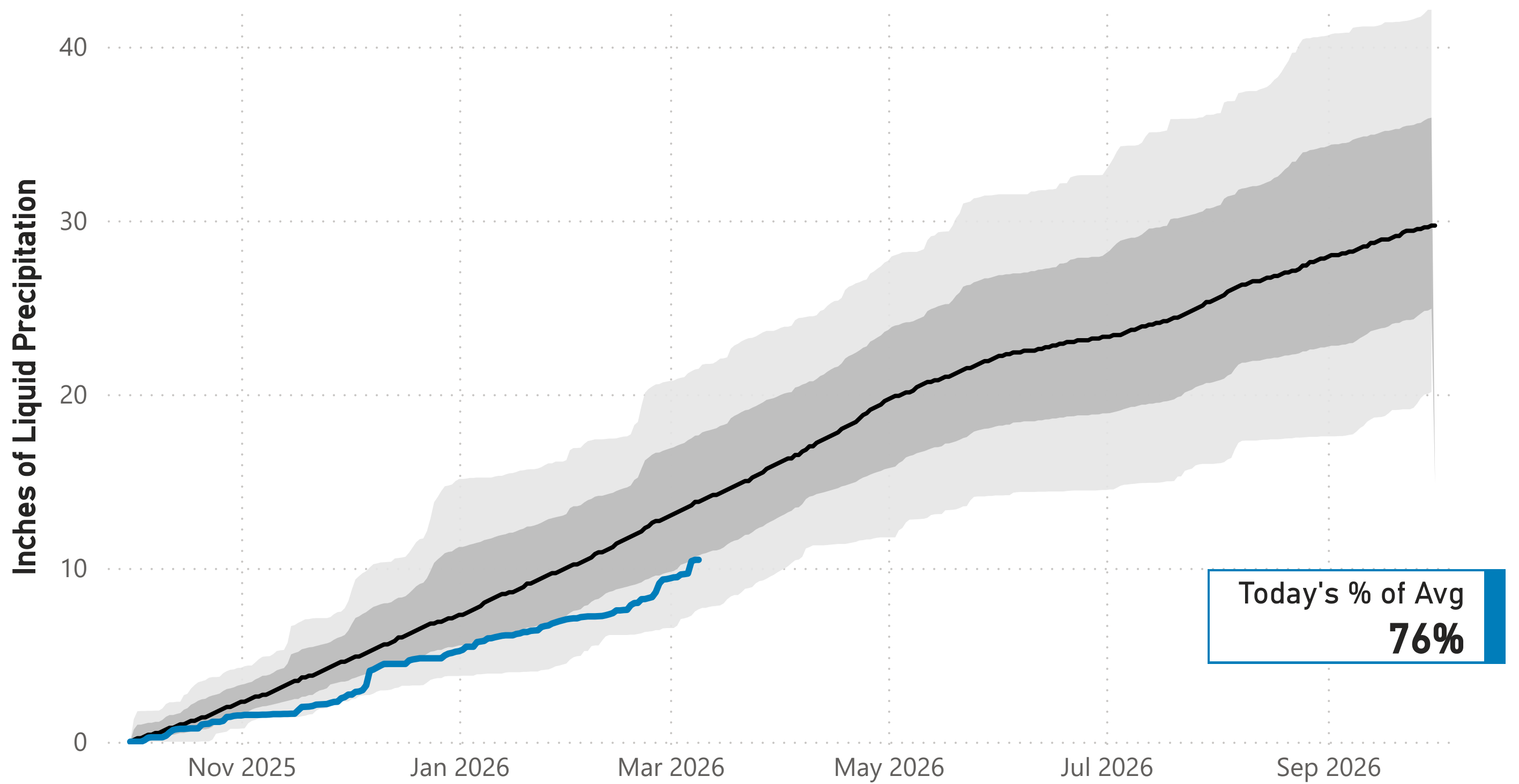
Today's % of Normal  
**55%**



Data are from the 7 SNOTEL stations above Denver Water's Upper South Platte diversion facilities.

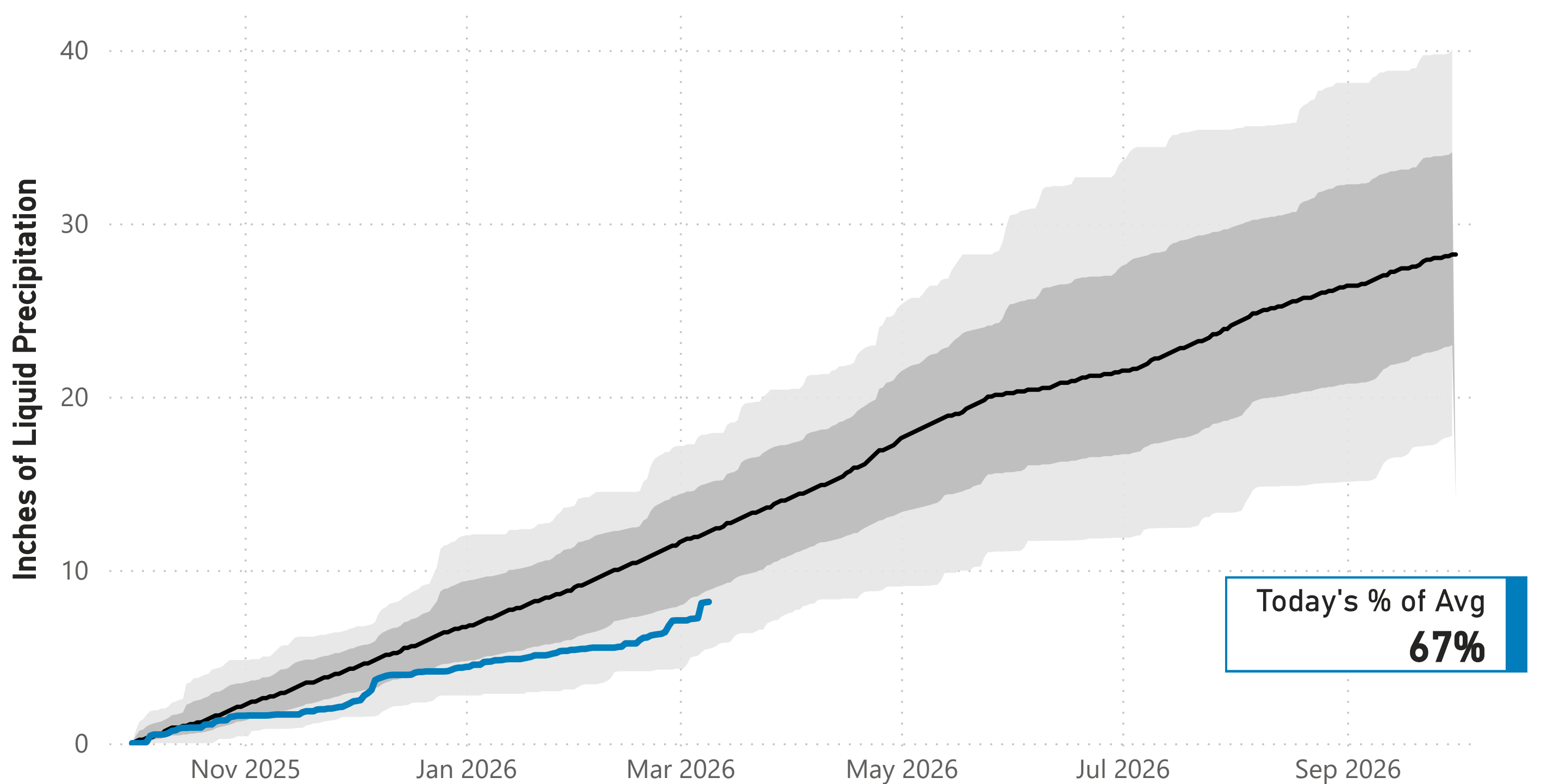
### Cumulative Precipitation: Colorado River Watershed

● Average (1991-2020) ● Historical Range (1980-2025) ● 2025-2026



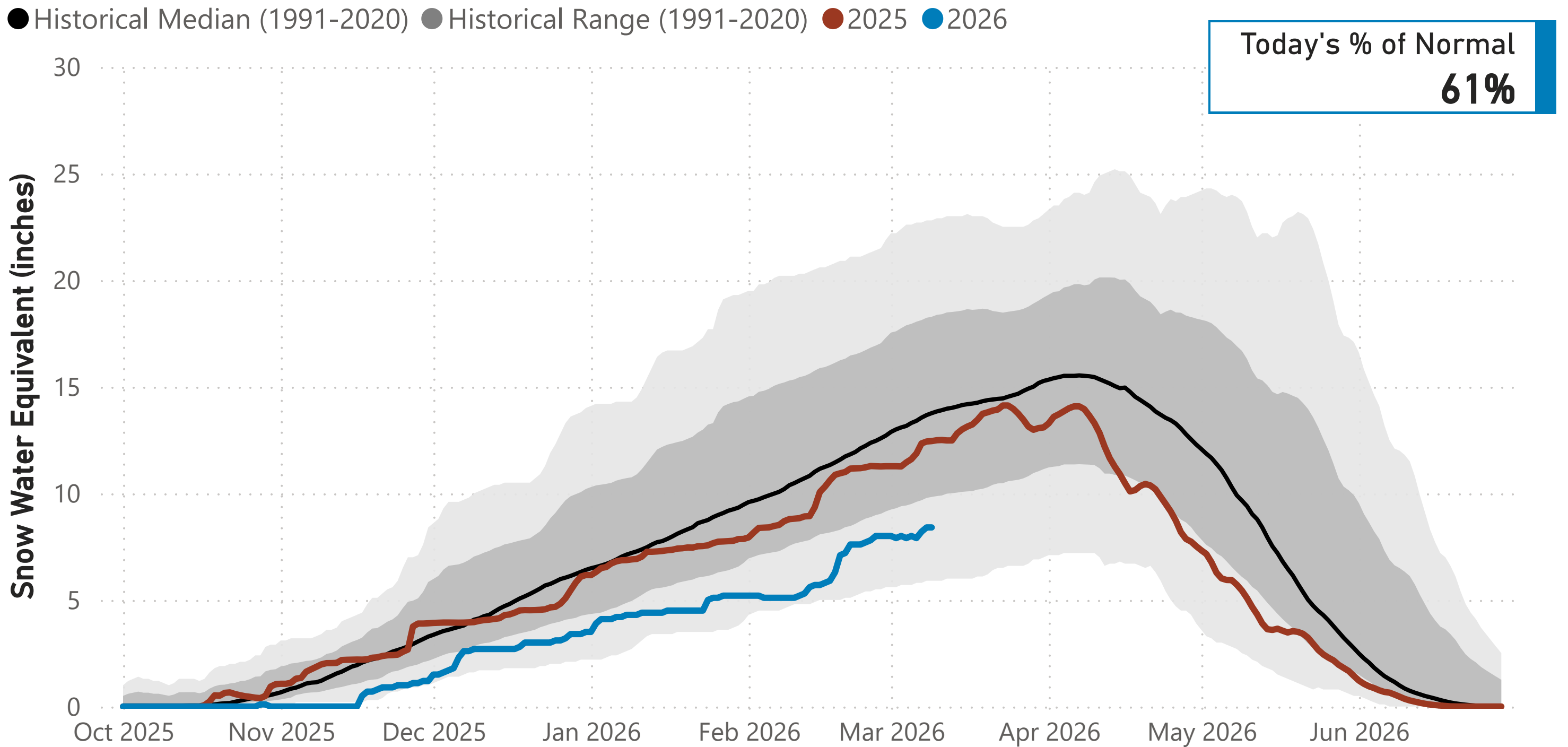
### Cumulative Precipitation: South Platte Watershed

● Average (1991-2020) ● Historical Range (1980-2025) ● 2025-2026



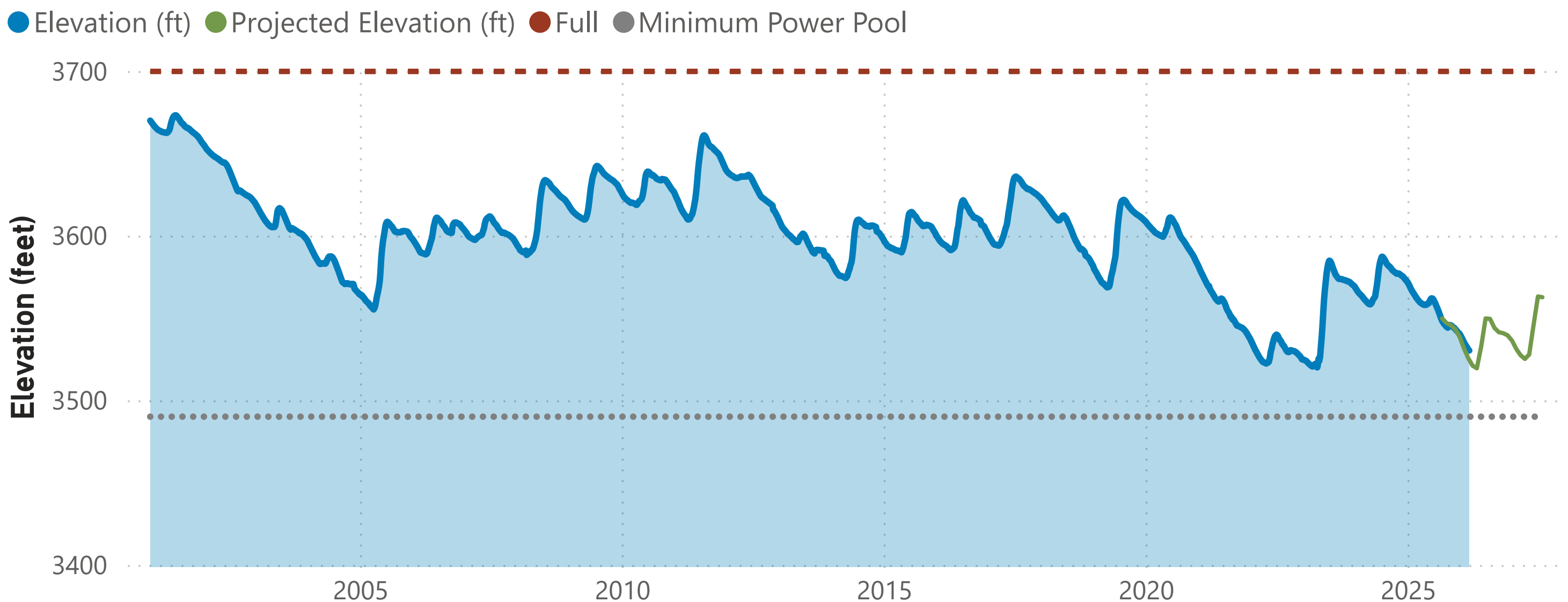
## Lake Powell Report\*

### Colorado River Above Lake Powell Snowpack



Data are from the 104 SNOTEL stations above Lake Powell.

### Lake Powell Elevation (2001-Current)



The historical and current Lake Powell elevation data come from the U.S. Bureau of Reclamation website. The projected elevation data are based on the 24-Month Study from the Bureau's Operating Plan for Colorado River System Reservoirs.

Note: \* Denver Water gets half of its water supply from the Colorado River and closely monitors conditions at Lake Powell and within the greater Colorado River Basin.