

WATER SPECIFICATIONS

EXHIBIT F

DXF SUBMITTAL GUIDELINES

After final District approval (prior to construction), the Final Water Main plans shall be delivered to the District as a DXF file. The purpose of these guidelines is to ensure that all drawing submittals conform to the level of quality, size and layer management that the District approves.

The following items need to be addressed prior to submittal to the District:

1. Project Surveying and Control
 - a. The project base map shall be developed by a PLS licensed by the State of Colorado and drawn in U.S. Survey Feet with coordinate system Colorado NAD83 (Central zone).
 - b. The project must be Geo-located within AutoCAD for reference.
 - c. Insertion point shall be set to (0,0,0)

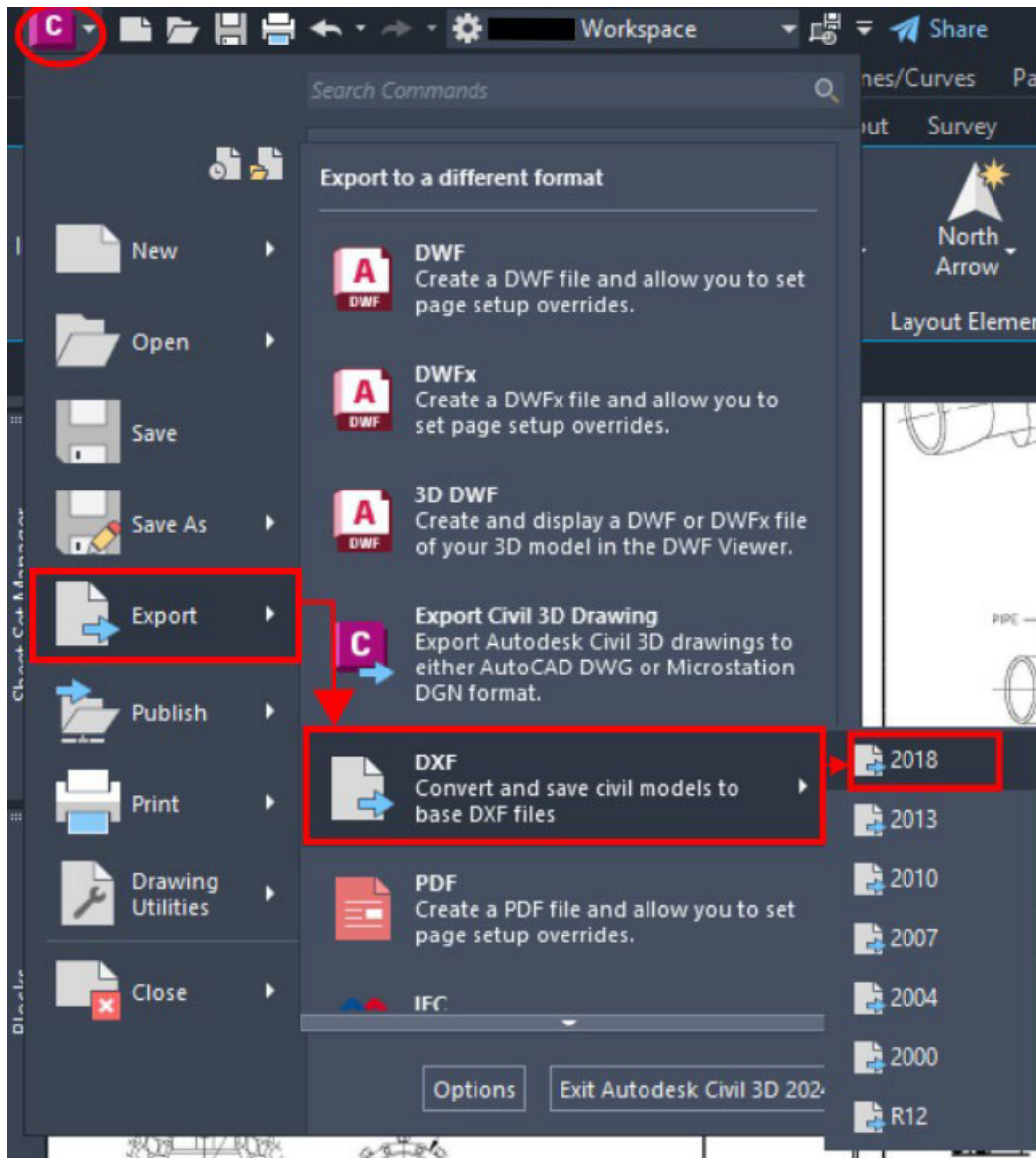
2. File Size & Layer Management

Prior to converting the .DWG file to a .DXF file, the designer shall perform the following commands in order to reduce the file size:

- a. WBLOCK – select all linework and objects that display the design as a final submittal, type in “wblock” in the command line and save as an updated .DWG file
- b. LAYMRG – select similar layers to merge and create one layer (this cleans up the layer list)
- c. OVERKILL – finds and deletes duplicates or copies of objects that are on top of each other
- d. PURGE – Flushes or purges drawing of everything not used in the drawing
- e. AUDIT – audits the entire drawing and checks for issues or errors or inconsistencies that causes slowdown or crashes.
- f. LAYDEL – as a last resort and with extreme caution, this command may or may not be used in order to force delete a specific layer or layers (that are not representing the project design) regardless of what is on them.
- g. All polylines to conform to DW CAD Standards
- h. All objects and reference polylines to be addressed in their separate layers (ie., all Utility Main’s, Manholes and appurtenances, property lines and ROW, flowlines, curb’s and gutters, etc.)

3. Convert .DWG to .DXF

Prior to Final submittal to the District, the Developer/Client shall export the .DWG to an open standard file format (.DXF) in order for the District to be able to share the drawing data between other CAD programs. The illustration below shows how the conversion is applied:



4. Submittal to the District via DropBox

Depending on the size of the .DXF Final drawing, the file shall be sent via Dropbox, SharePoint or similar to the District/Project Manager and Construction Coordinator via email.