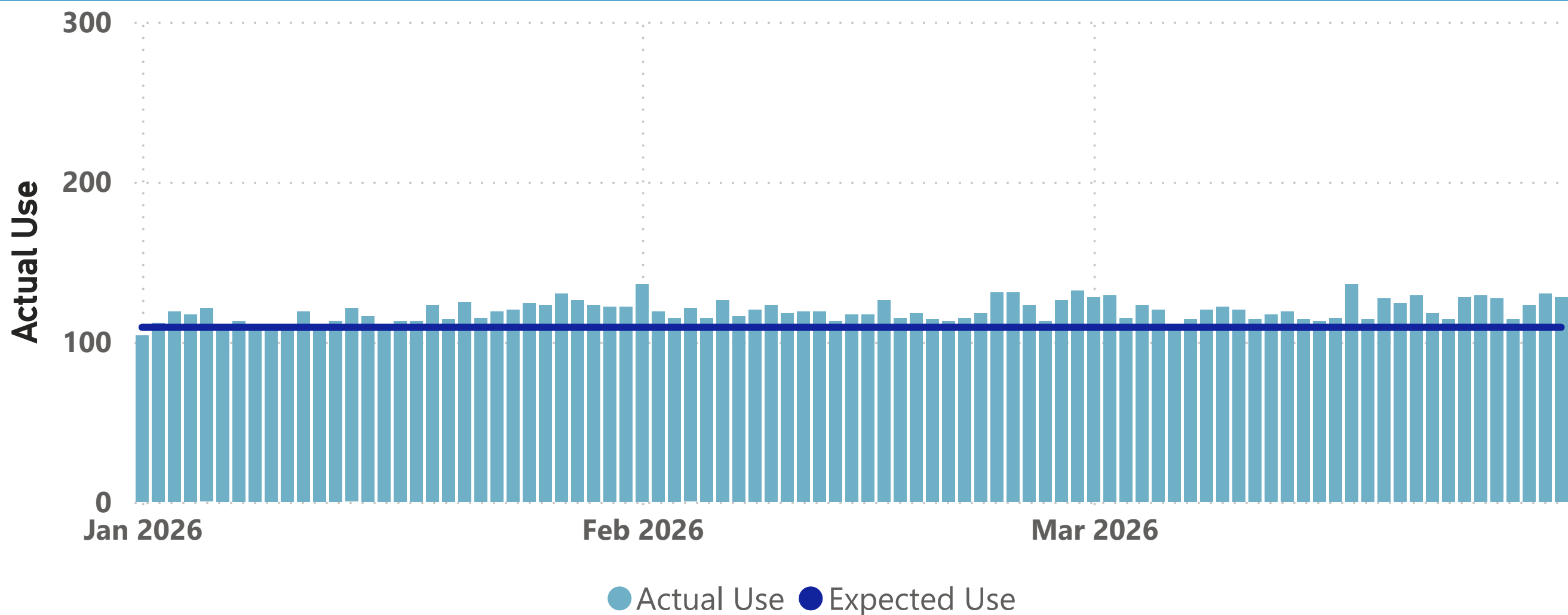


Supply Reservoir Contents

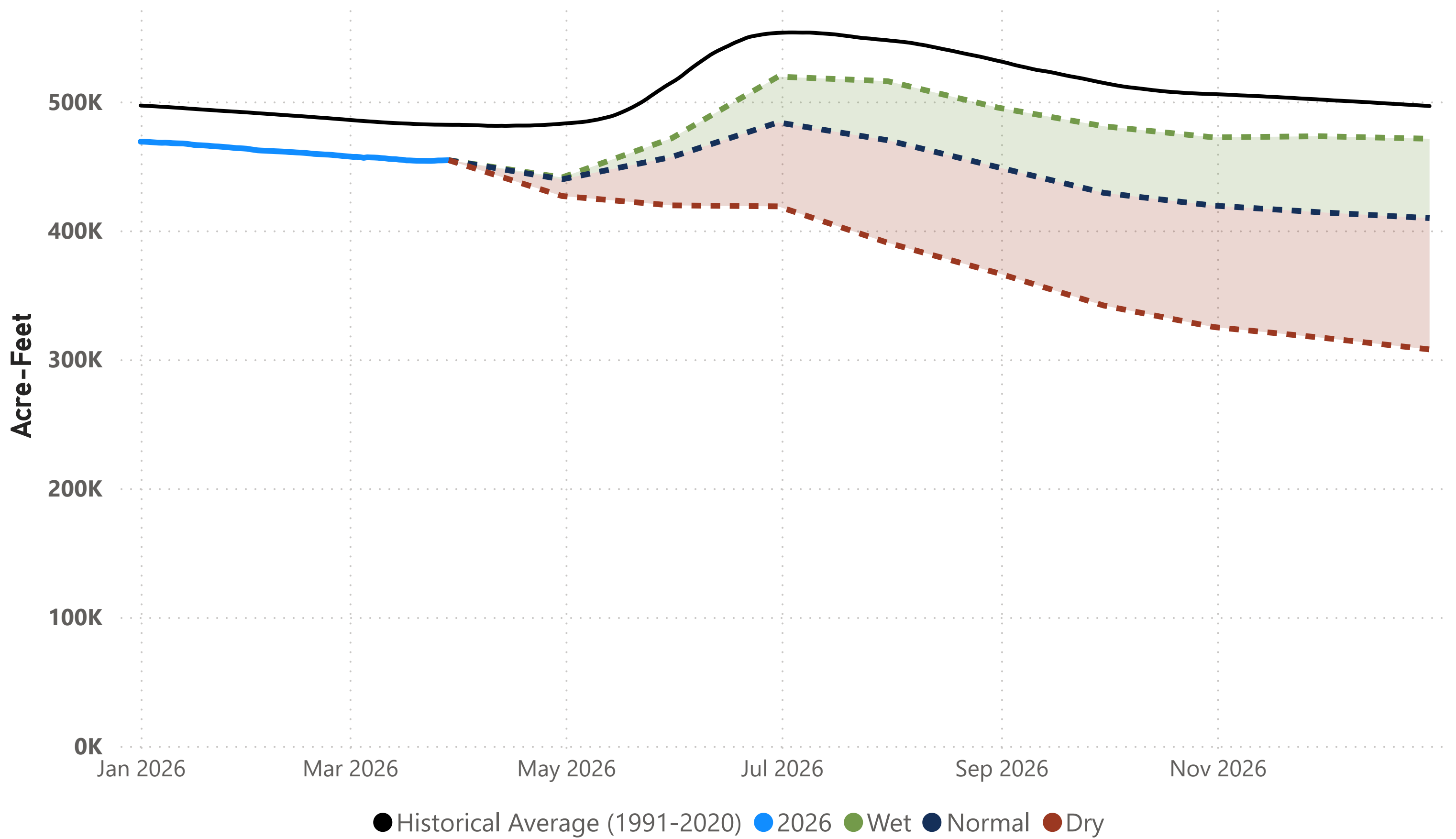
Reservoir	Current Contents	Last Year Contents	Reservoir Capacity	Current % Full	Last Year % Full	Hist Avg % Full
Antero	18,064	19,006	20,122	89	94	78
Chatfield	27,927	28,389	30,342	92	94	87
Cheesman	62,917	70,734	79,064	79	89	82
Dillon	197,185	206,471	257,304	76	80	86
Eleven Mile	99,212	99,349	97,779	101	102	102
Gross*	18,723	15,649	41,811	44	37	59
Marston	15,795	16,734	19,108	82	88	69
Meadow Creek	320	608	5,370	5	11	34
Ralston	7,227	8,938	10,776	67	83	73
Strontia Springs	7,074	6,925	7,863	89	88	90
TOTAL	454,444	472,803	569,539	80	83	85

Note: *Gross Reservoir storage is limited to 29,938 acre feet in total storage during construction activities.

Daily Use – Actual vs. Expected



Total Supply Reservoir Contents and Forecasts



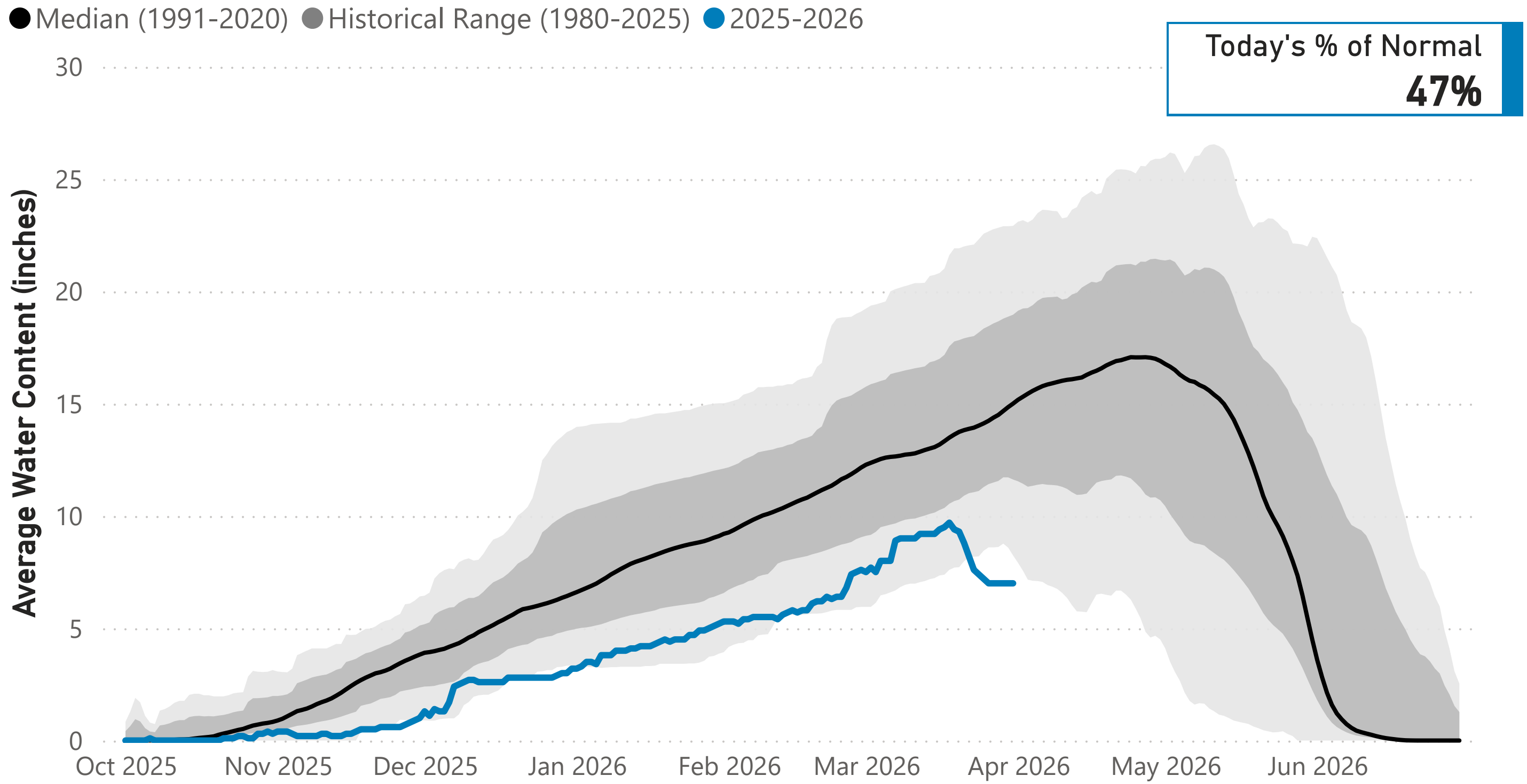
Notes: 1) Total system supply reservoir contents are shown in acre-feet (AF). 2) The solid blue line represents actual 2026 storage to date. 3) The dotted lines represent the **most probable forecast, wet conditions, and dry conditions** based on current conditions.

2026 Denver Water Daily Use Heatmap

Day of Month	Jan	Feb	Mar	Apr	May	Jun	Jul	Aug	Sep	Oct	Nov	Dec	
1	104	136	128										
2	112	119	129										
3	119	115	115										
4	117	121	123										
5	121	115	120										
6	110	126	111										
7	113	116	114										
8	109	120	120										
9	107	123	122										
10	111	118	120										
11	119	119	114										
12	111	119	117										
13	113	113	119										
14	121	117	114										
15	116	117	113										
16	110	126	115										
17	113	115	136										
18	113	118	114										
19	123	114	127										
20	114	113	124										
21	125	115	129										
22	115	118	118										
23	119	131	114										
24	120	131	128										
25	124	123	129										
26	123	113	127										
27	130	126	114										
28	126	132	123										
29	123		130										
30	122		128										
31	122												
													YTD-Avg
% of Expected Daily Use	107	110	111										110
Expected Daily Use	109	109	109	120	175	261	300	288	263	170	114	107	109
Monthly Average	117	120	121										119

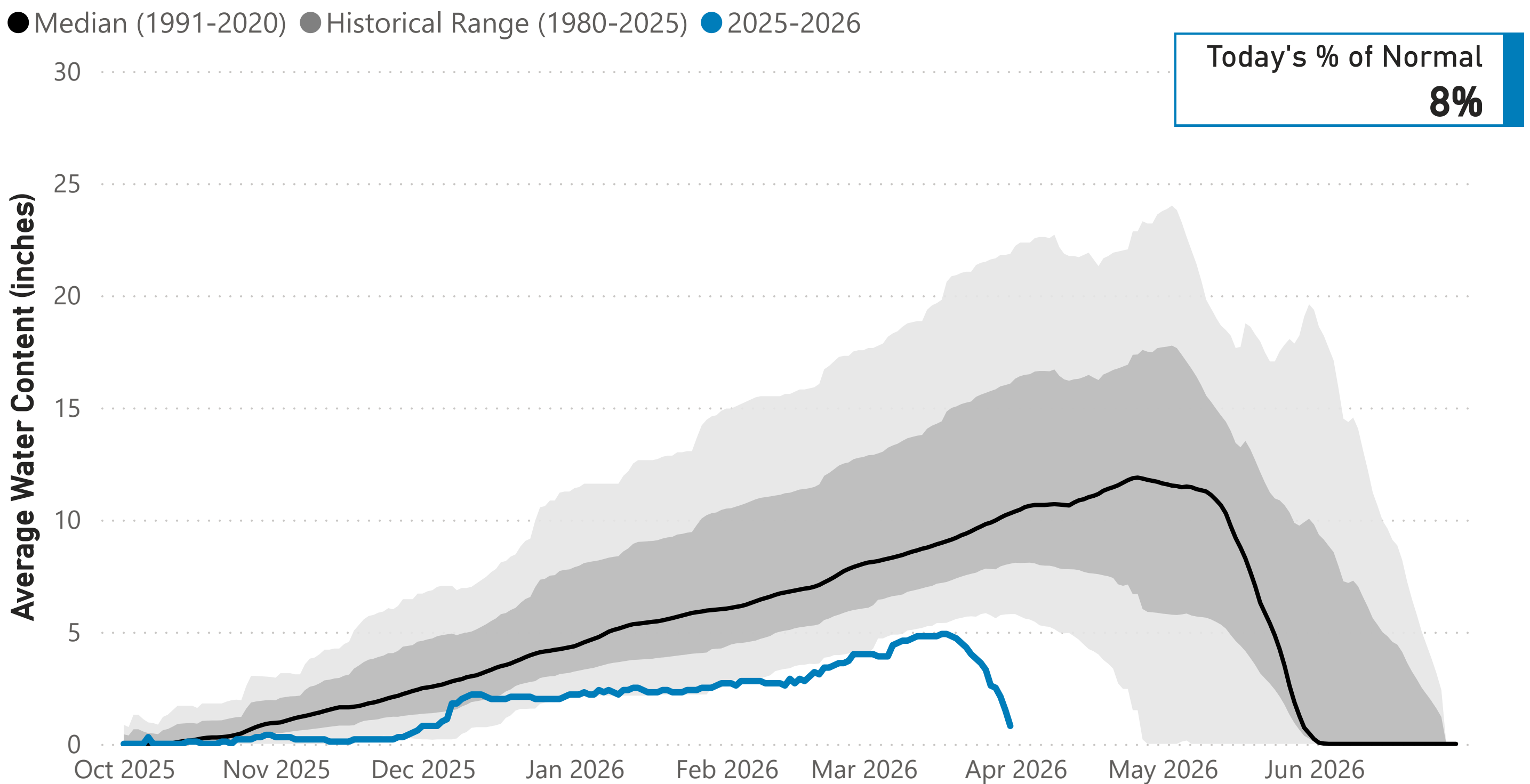
Notes: 1) Values are in million gallons (MG). 2) Expected Daily Use is based on historical use with normal weather conditions. 3) Cell colors represent deviations from **daily** expected use: **white** = expected, **red** = above expected, **blue** = below expected. 4) Values are daily totals by calendar day and month 2026.

Snowpack: Colorado River Watershed



Data are from the 9 SNOTEL stations above Denver Water's Upper Colorado River diversion facilities.

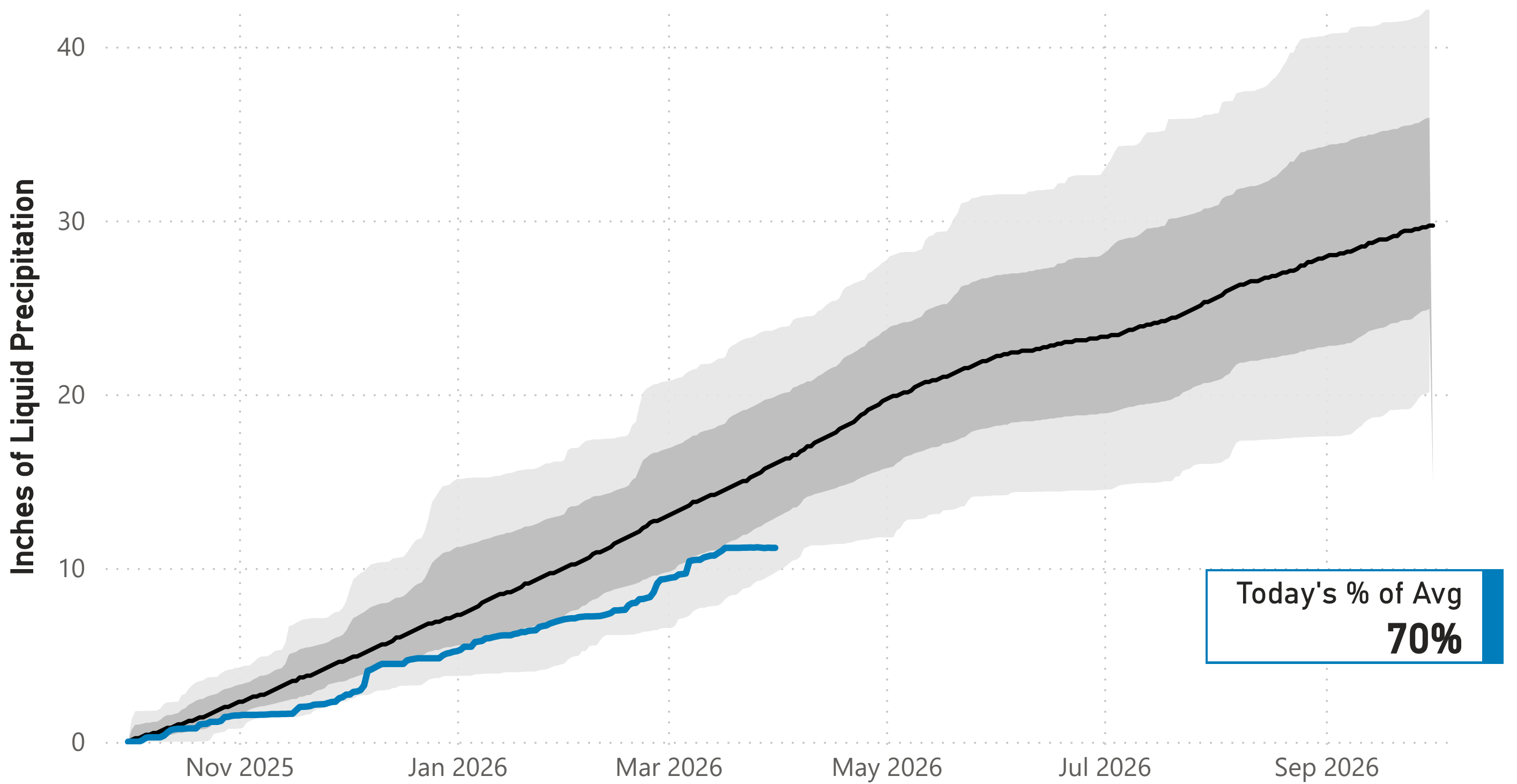
Snowpack: South Platte River Watershed



Data are from the 7 SNOTEL stations above Denver Water's Upper South Platte diversion facilities.

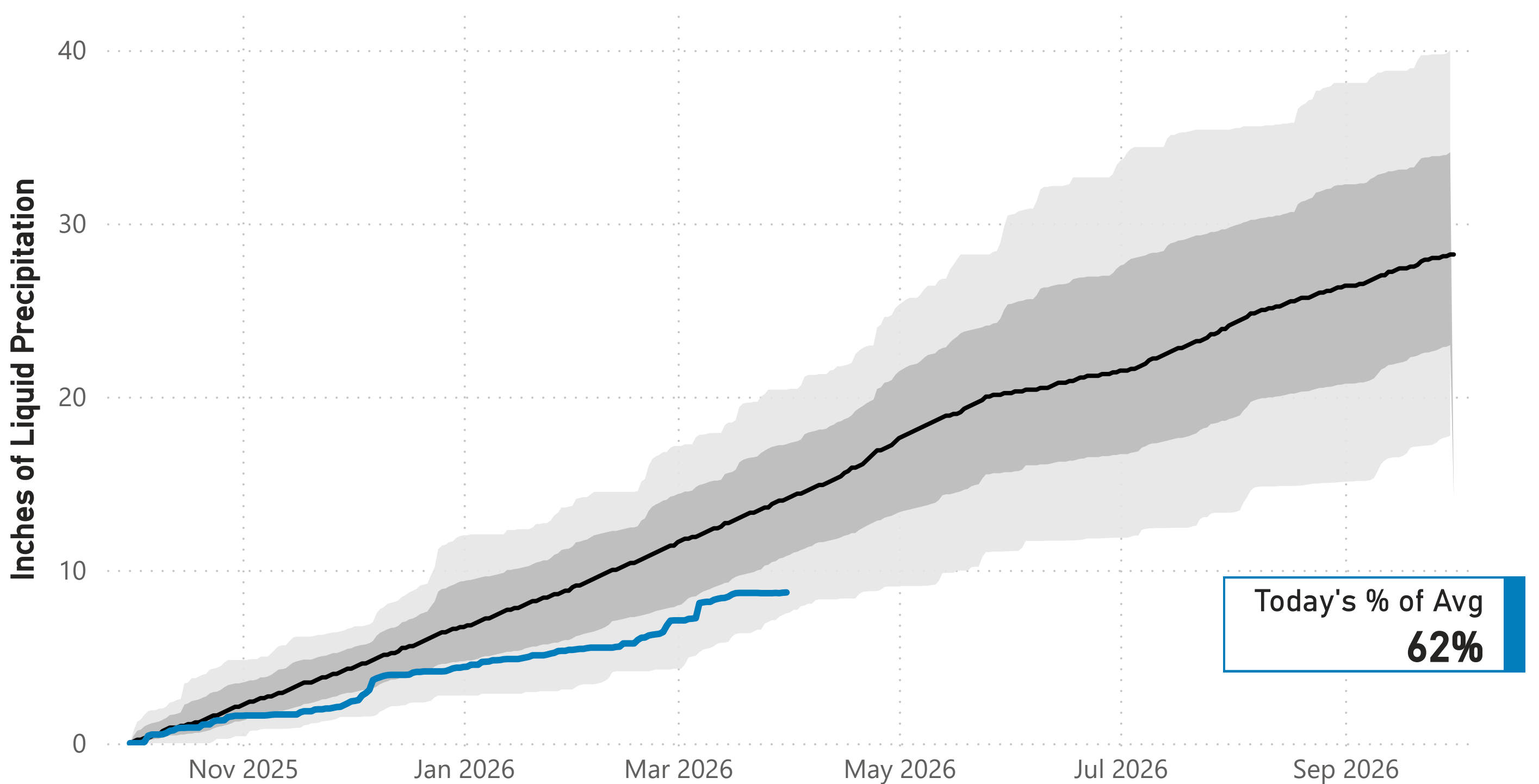
Cumulative Precipitation: Colorado River Watershed

● Average (1991-2020) ● Historical Range (1980-2025) ● 2025-2026



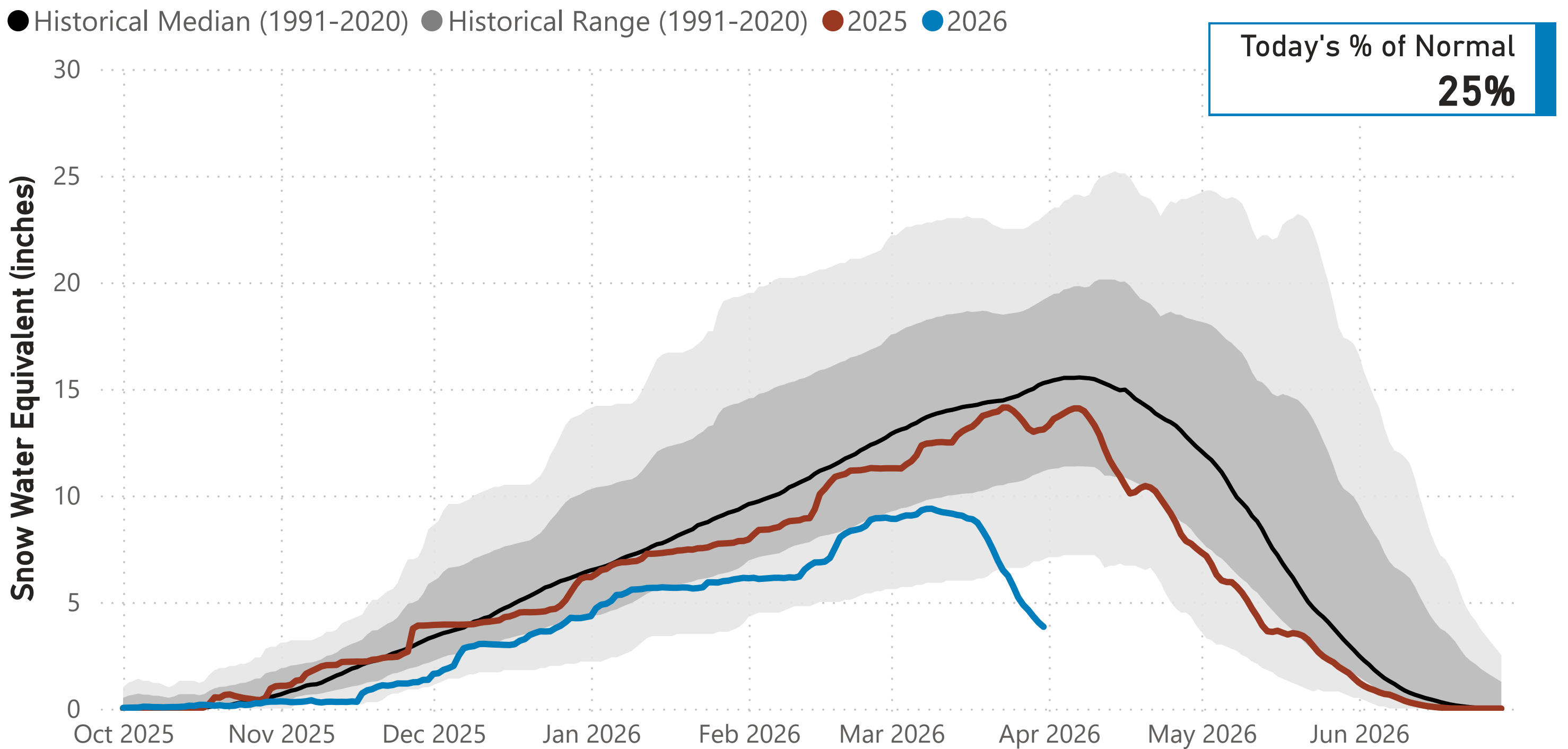
Cumulative Precipitation: South Platte Watershed

● Average (1991-2020) ● Historical Range (1980-2025) ● 2025-2026



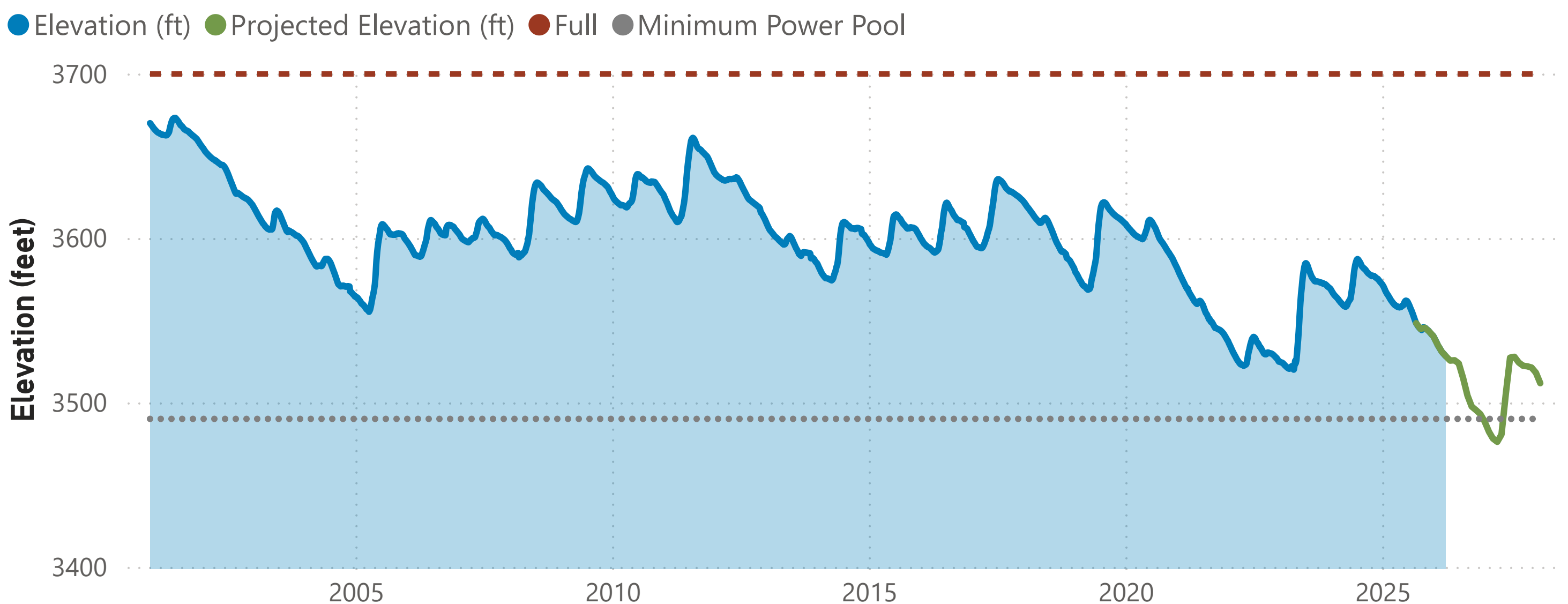
Lake Powell Report*

Colorado River Above Lake Powell Snowpack



Data are from the 104 SNOTEL stations above Lake Powell.

Lake Powell Elevation (2001-Current)



The historical and current Lake Powell elevation data come from the U.S. Bureau of Reclamation website. The projected elevation data are based on the 24-Month Study from the Bureau's Operating Plan for Colorado River System Reservoirs.

Note: * Denver Water gets half of its water supply from the Colorado River and closely monitors conditions at Lake Powell and within the greater Colorado River Basin.