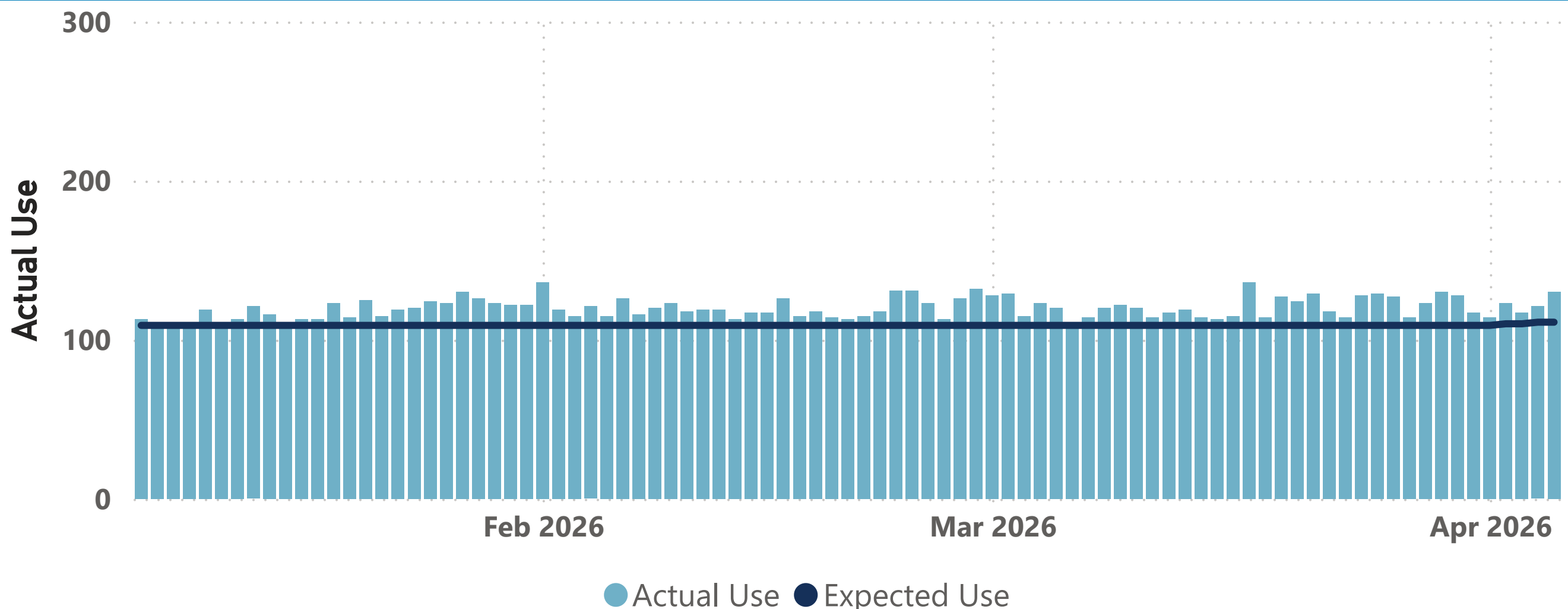


Supply Reservoir Contents

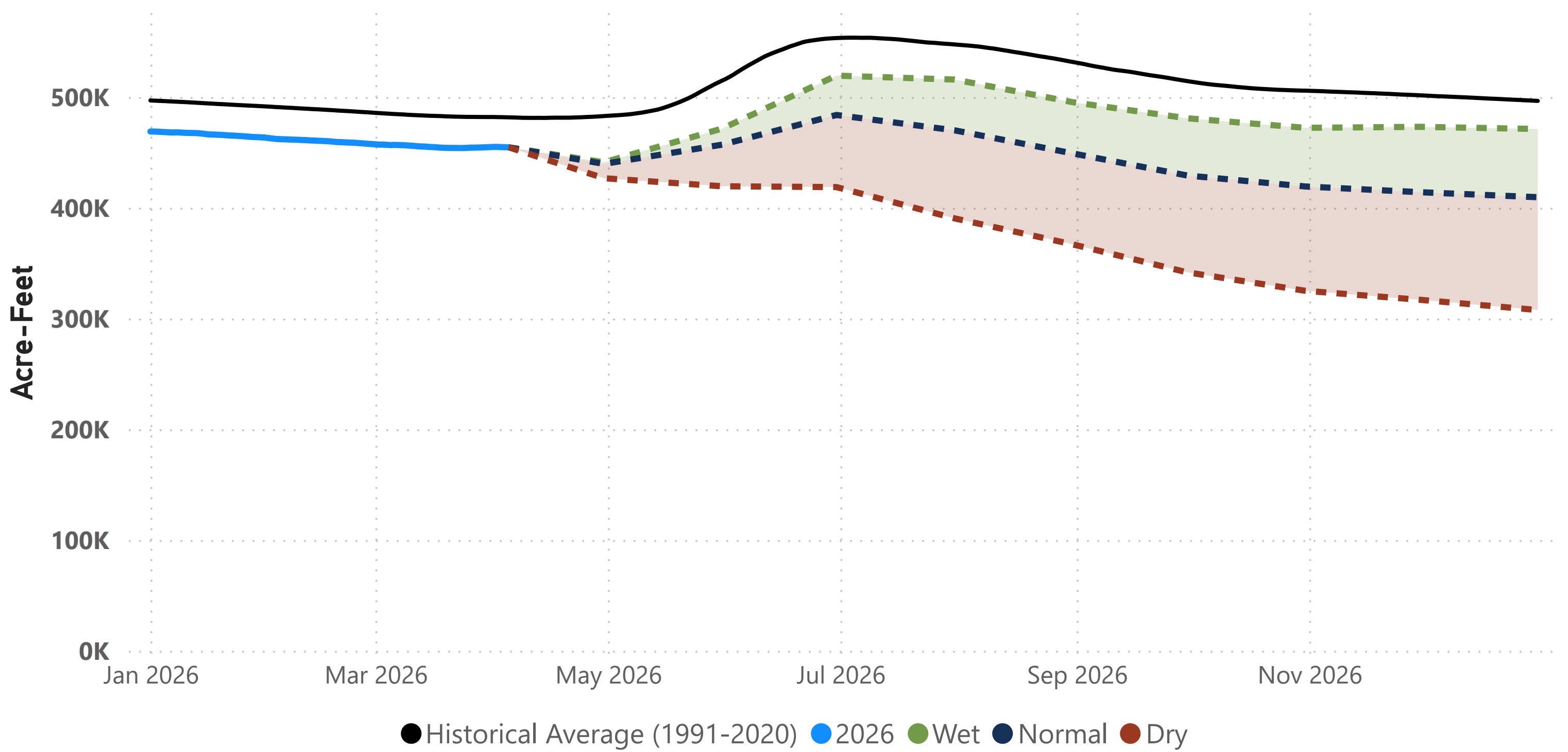
Reservoir	Current Contents	Last Year Contents	Reservoir Capacity	Current % Full	Last Year % Full	Hist Avg % Full
Antero	18,002	19,027	20,122	89	95	78
Chatfield	27,701	28,521	30,342	91	94	87
Cheesman	62,834	70,221	79,064	79	89	83
Dillon	197,570	206,764	257,304	76	80	86
Eleven Mile	99,383	99,555	97,779	101	102	102
Gross*	18,716	15,708	41,811	44	38	58
Marston	15,575	16,254	19,108	81	85	71
Meadow Creek	412	608	5,370	7	11	34
Ralston	7,395	8,521	10,776	68	79	73
Strontia Springs	6,960	7,318	7,863	88	93	89
TOTAL	454,548	472,498	569,539	80	83	85

Note: *Gross Reservoir storage is limited to 29,938 acre feet in total storage during construction activities.

Daily Use – Actual vs. Expected

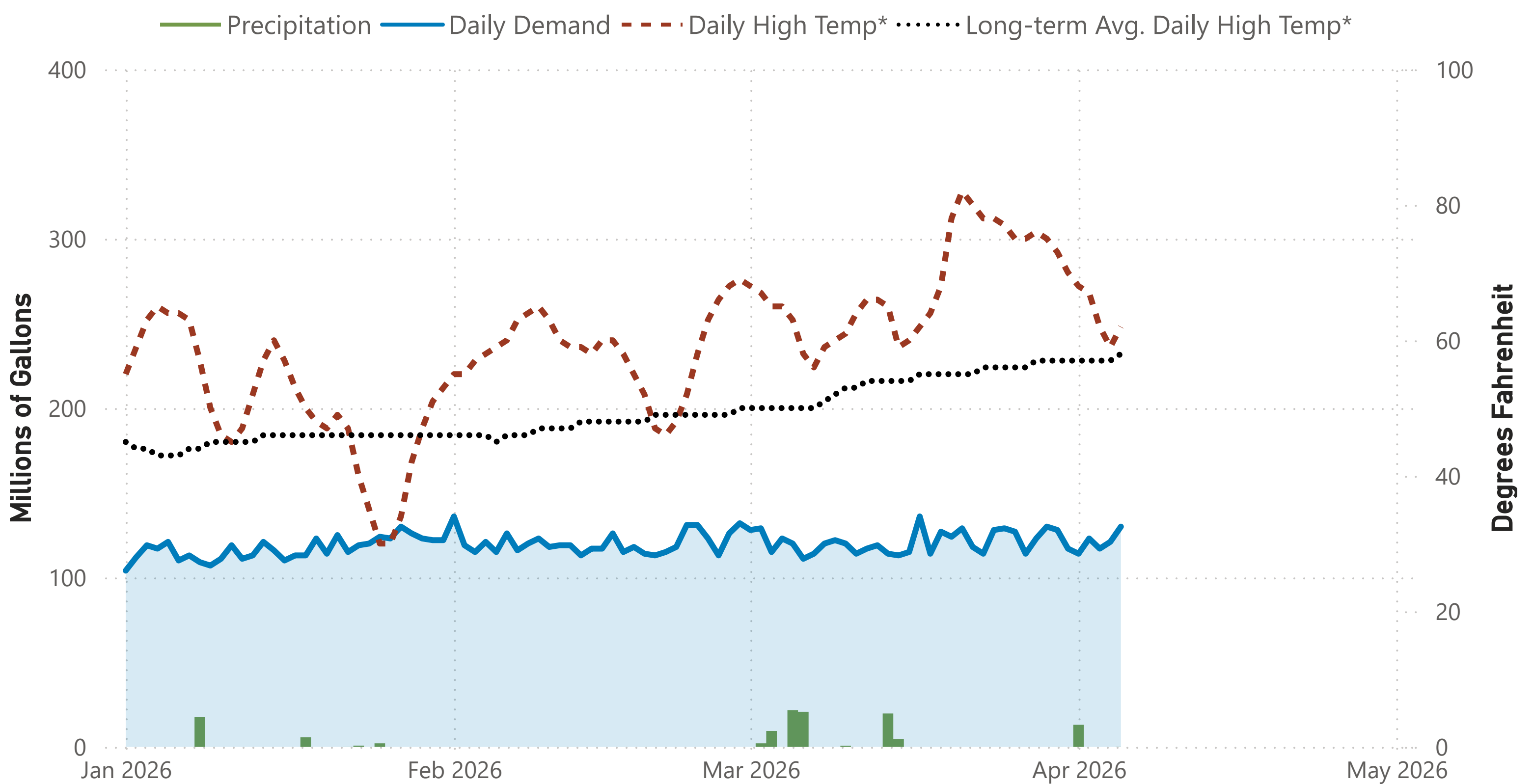


Total Supply Reservoir Contents and Forecasts



Notes: 1) Total system supply reservoir contents are shown in acre-feet (AF). 2) The solid blue line represents actual 2026 storage to date. 3) The dotted lines represent the **most probable forecast, wet conditions, and dry conditions** based on current conditions.

2026 Water Use and Weather Conditions

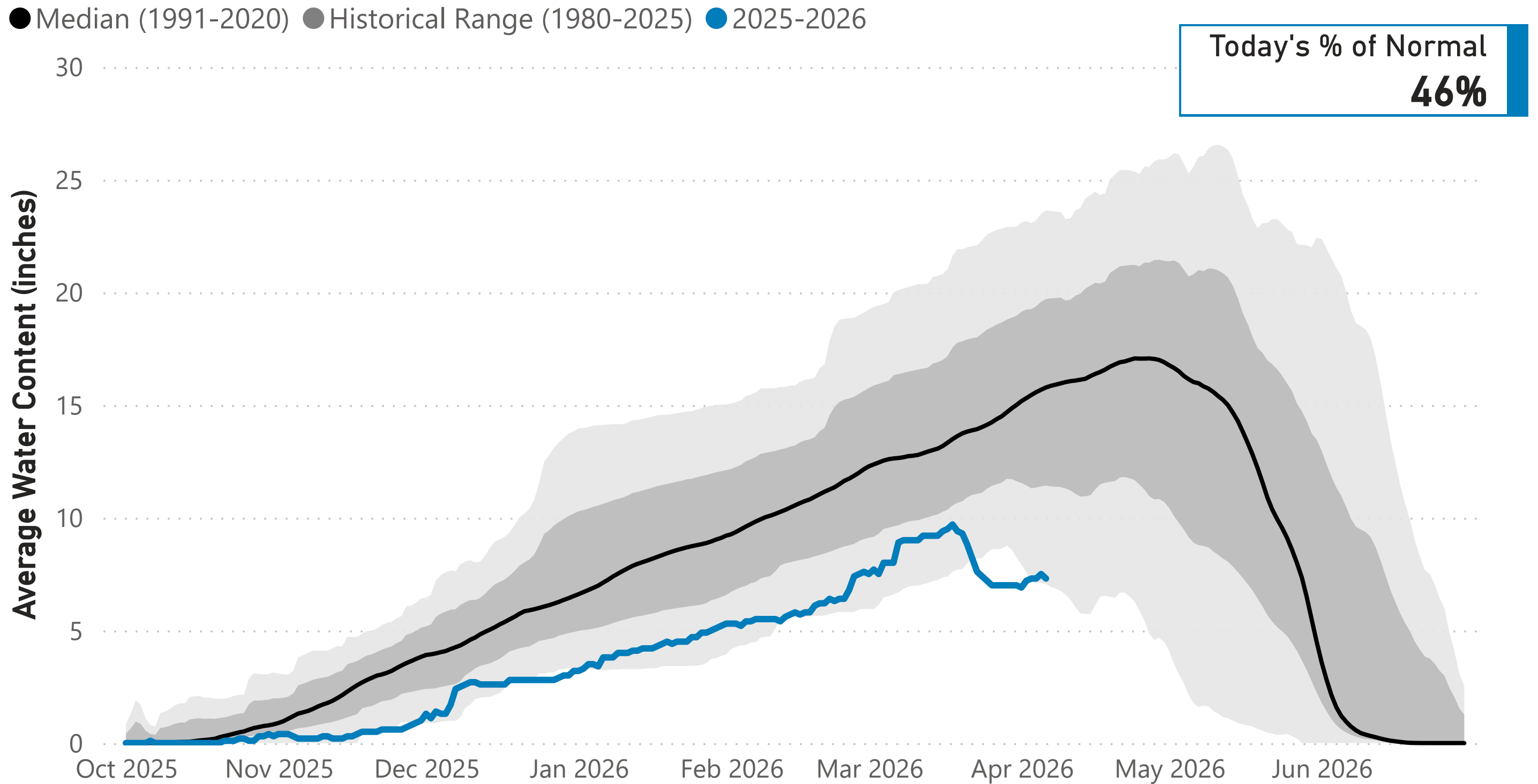


2026 Denver Water Daily Use Heatmap

Day of Month	Jan	Feb	Mar	Apr	May	Jun	Jul	Aug	Sep	Oct	Nov	Dec	
1	104	136	128	114									
2	112	119	129	123									
3	119	115	115	117									
4	117	121	123	121									
5	121	115	120	130									
6	110	126	111										
7	113	116	114										
8	109	120	120										
9	107	123	122										
10	111	118	120										
11	119	119	114										
12	111	119	117										
13	113	113	119										
14	121	117	114										
15	116	117	113										
16	110	126	115										
17	113	115	136										
18	113	118	114										
19	123	114	127										
20	114	113	124										
21	125	115	129										
22	115	118	118										
23	119	131	114										
24	120	131	128										
25	124	123	129										
26	123	113	127										
27	130	126	114										
28	126	132	123										
29	123		130										
30	122		128										
31	122		117										
													YTD-Avg
Monthly Average	117	120	121	121									119
Expected Daily Use	109	109	109	120	175	261	300	288	263	170	114	107	110
% of Expected Daily Use	107	110	111	101									109

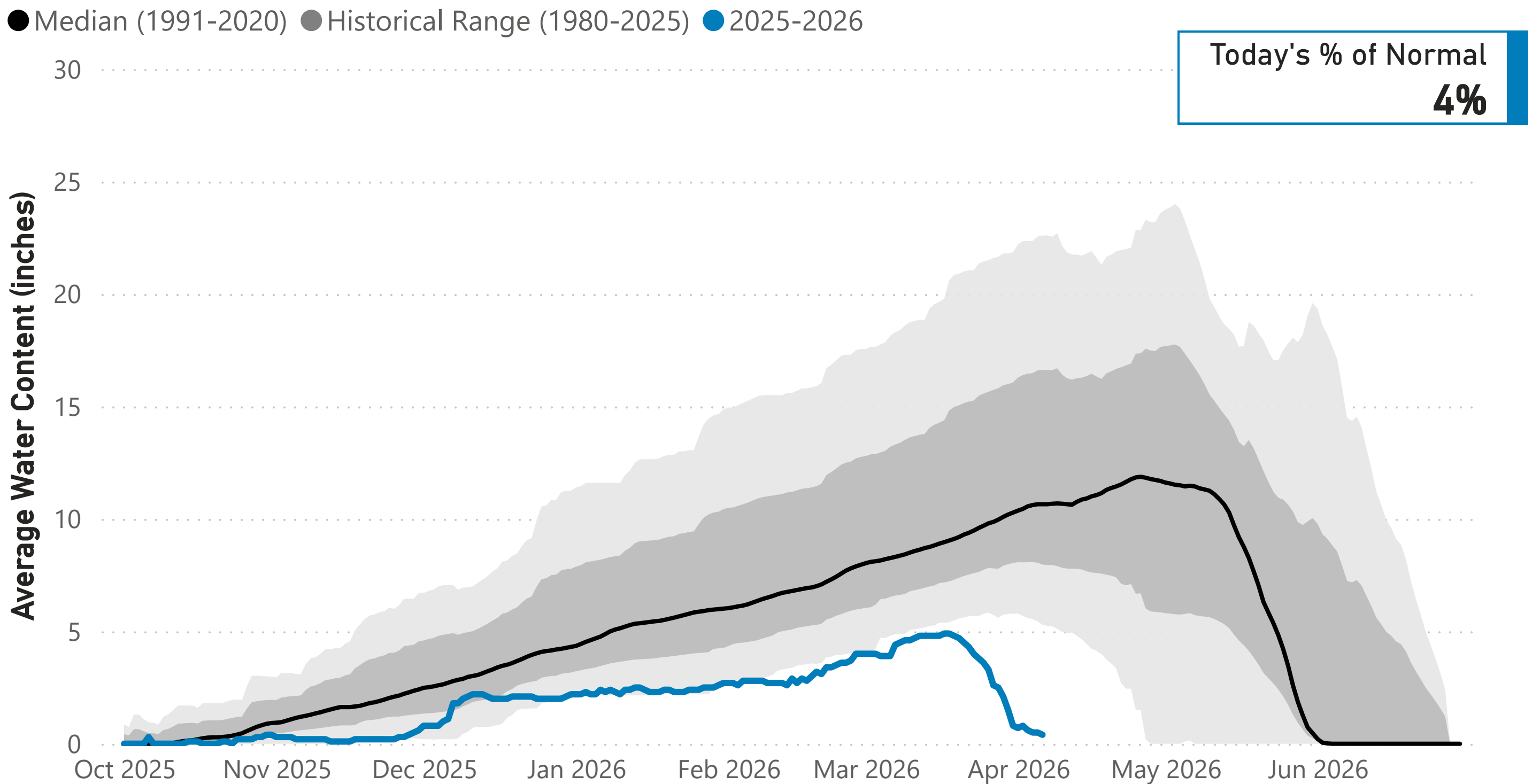
Notes: 1) Values are in million gallons (MG). 2) Expected Daily Use is based on historical use with normal weather conditions. 3) Cell colors represent deviations from **daily** expected use: **white** = expected, **red** = above expected, **blue** = below expected. 4) Values are daily totals by calendar day and month 2026.

Snowpack: Colorado River Watershed



Data are from the 9 SNOTEL stations above Denver Water's Upper Colorado River diversion facilities.

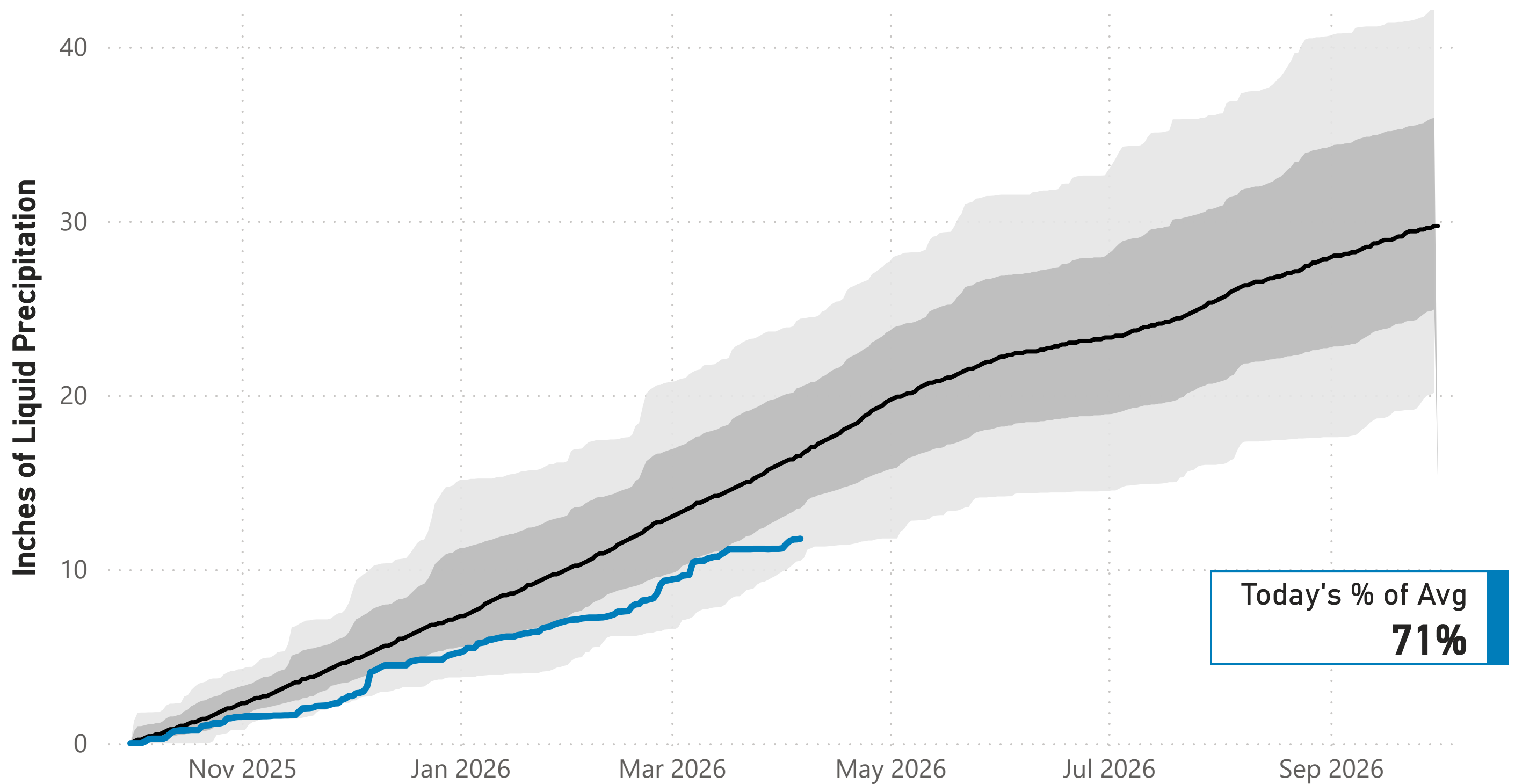
Snowpack: South Platte River Watershed



Data are from the 7 SNOTEL stations above Denver Water's Upper South Platte diversion facilities.

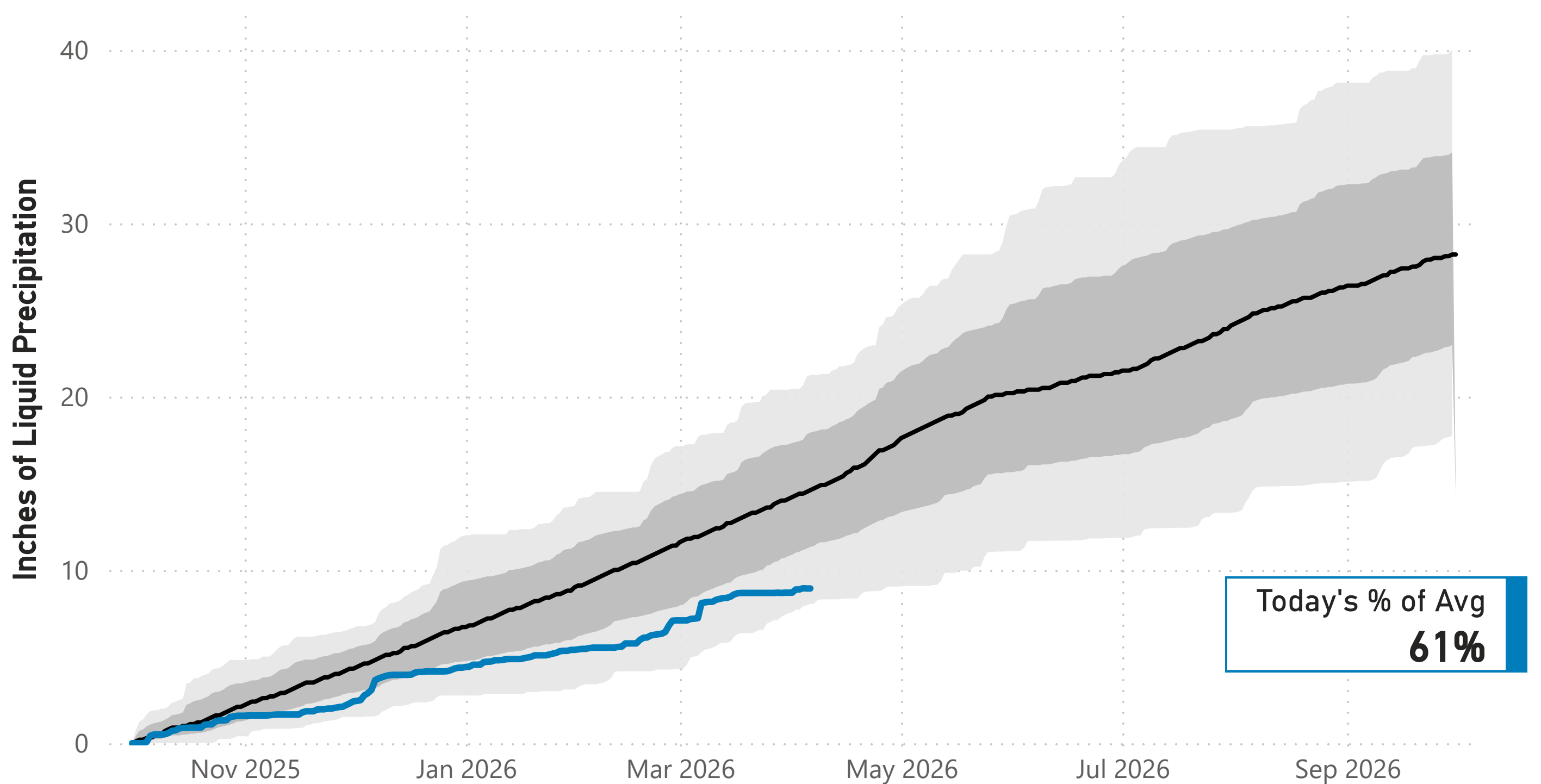
Cumulative Precipitation: Colorado River Watershed

● Average (1991-2020) ● Historical Range (1980-2025) ● 2025-2026



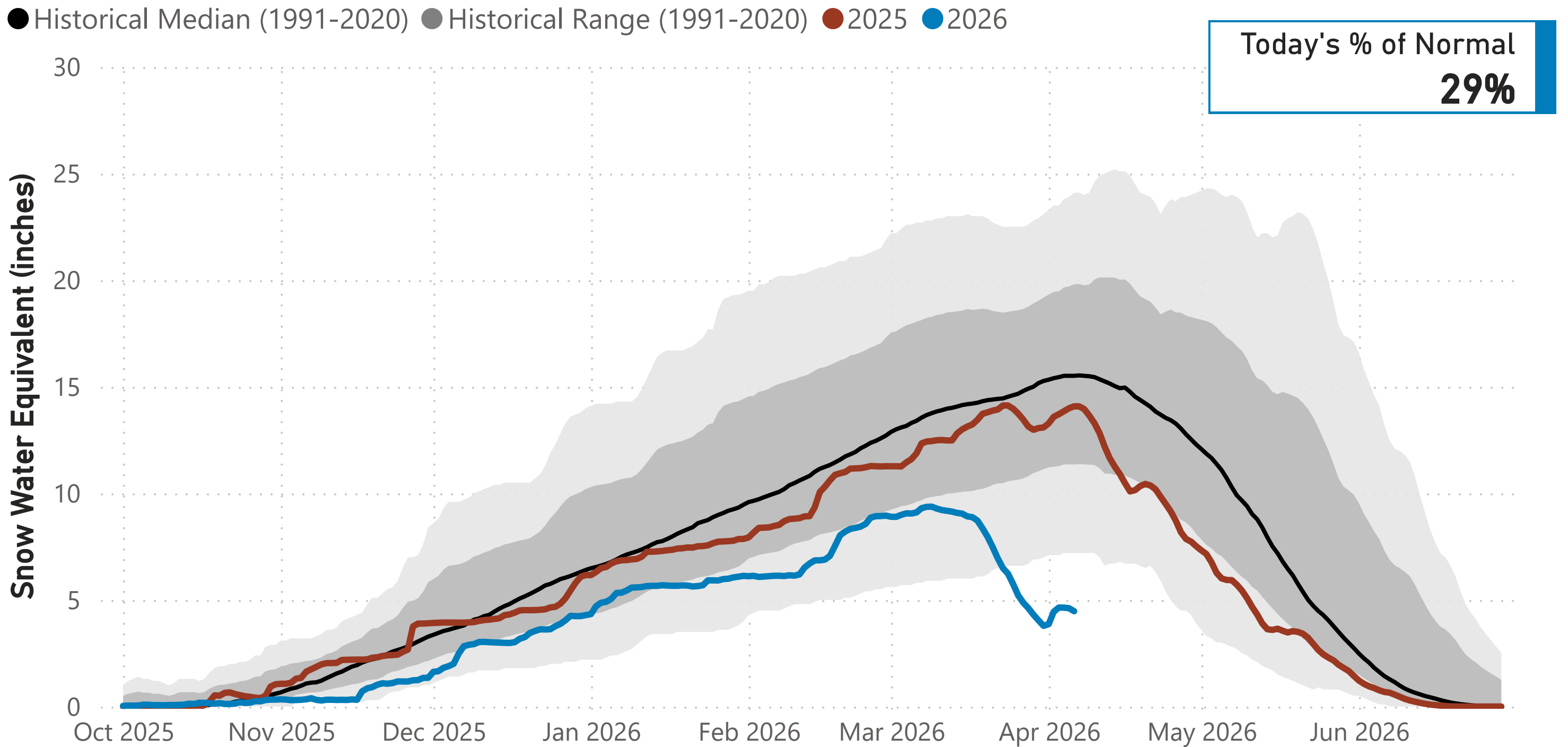
Cumulative Precipitation: South Platte Watershed

● Average (1991-2020) ● Historical Range (1980-2025) ● 2025-2026



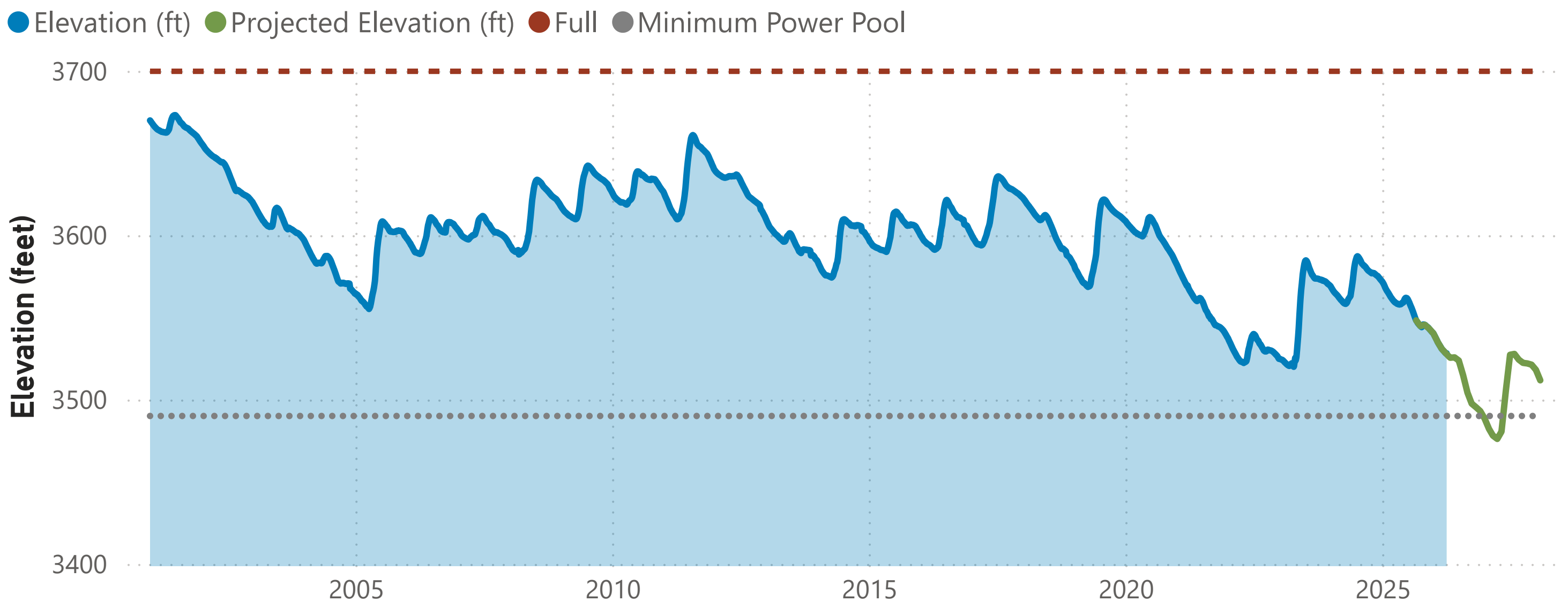
Lake Powell Report*

Colorado River Above Lake Powell Snowpack



Data are from the 104 SNOTEL stations above Lake Powell.

Lake Powell Elevation (2001-Current)



The historical and current Lake Powell elevation data come from the U.S. Bureau of Reclamation website. The projected elevation data are based on the 24-Month Study from the Bureau's Operating Plan for Colorado River System Reservoirs.

Note: * Denver Water gets half of its water supply from the Colorado River and closely monitors conditions at Lake Powell and within the greater Colorado River Basin.