

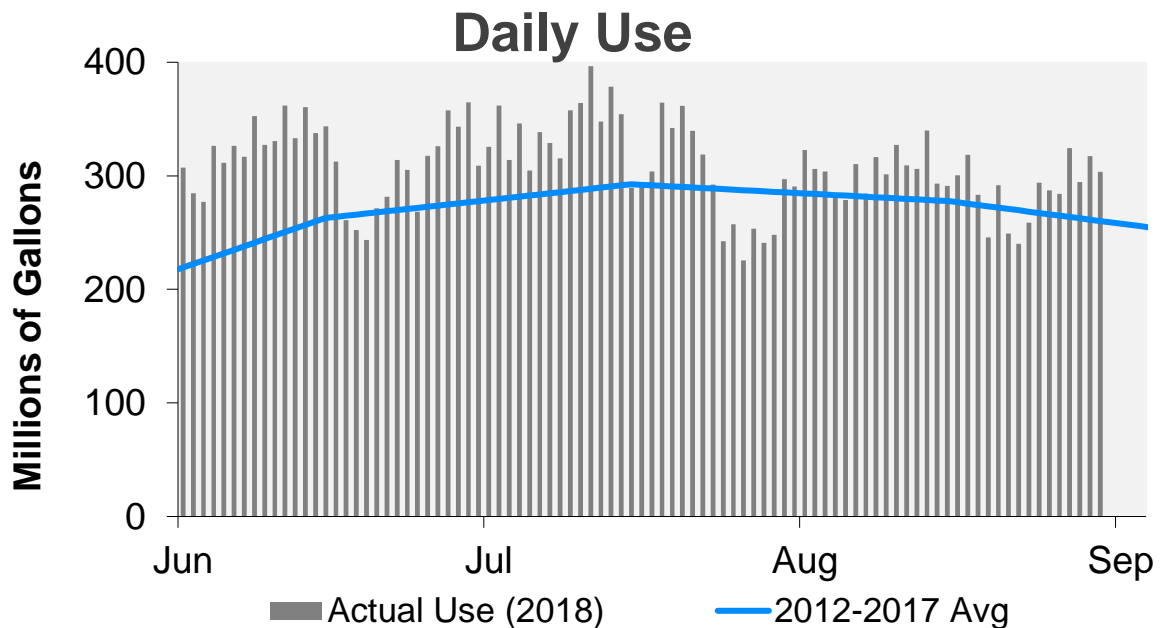


## WATER WATCH REPORT

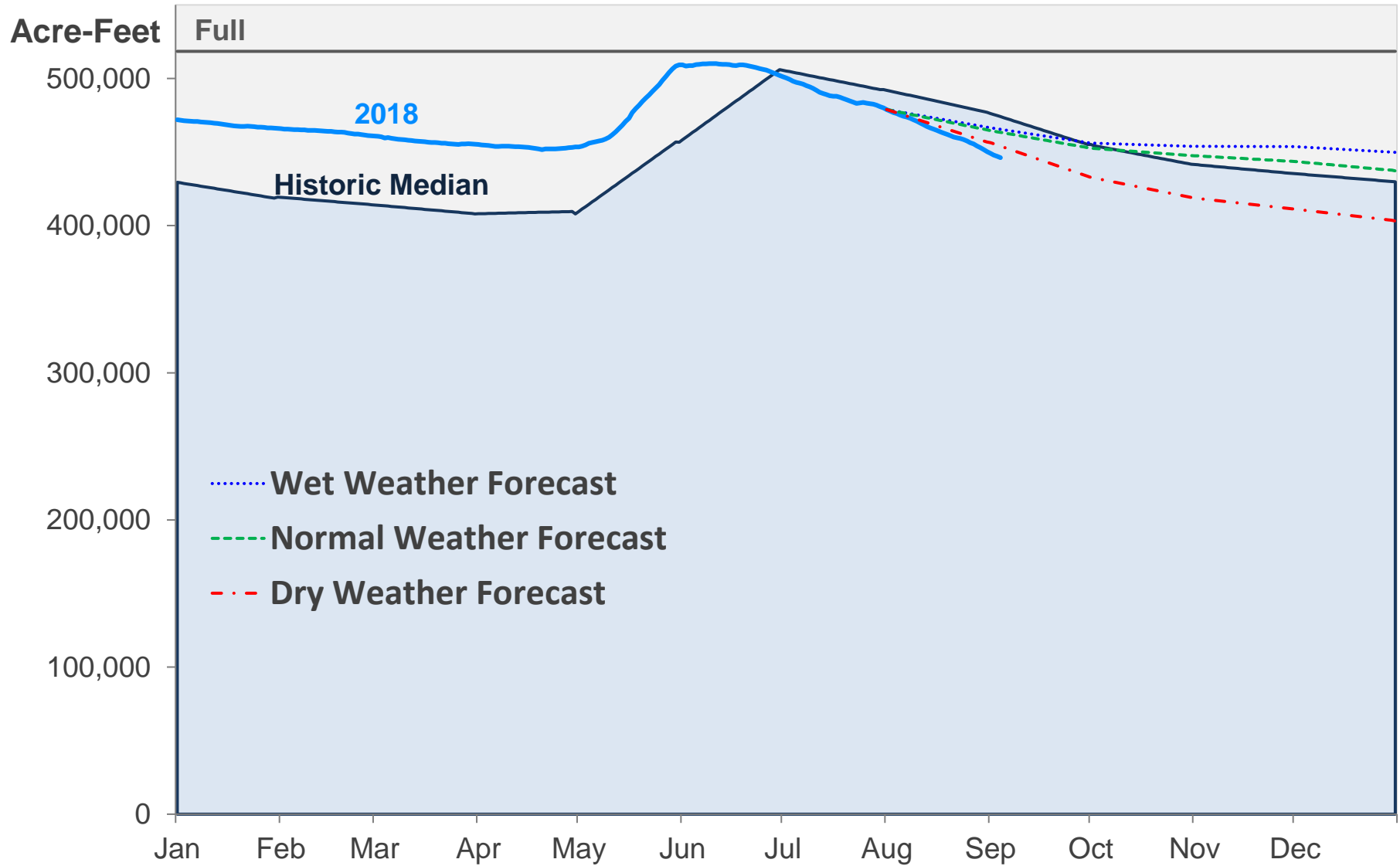
September 4, 2018

### Supply Reservoir Contents

Reservoir	Capacity		Current Usable Contents (acre-feet)	Percent Full		
	(acre-feet)			Current	Last Year	Historic Median
	Total	Usable				
Antero	19,881	19,826	18,880	95%	100%	100%
Eleven Mile	97,779	97,779	98,698	101%	102%	102%
Cheesman	79,064	79,064	57,733	73%	99%	93%
Marston	19,256	13,133	11,820	90%	91%	59%
Strontia Springs	7,863	7,163	6,520	91%	89%	93%
Chatfield	27,076	10,782	9,754	90%	52%	53%
Dillon	257,304	249,095	213,604	86%	98%	98%
Gross	41,811	29,811	20,931	70%	89%	81%
Ralston	10,776	7,276	5,747	79%	70%	84%
Meadow Creek	5,370	4,520	2,507	55%	35%	70%
<b>Total</b>	<b>566,180</b>	<b>518,449</b>	<b>446,194</b>	<b>86%</b>	<b>96%</b>	<b>91%</b>



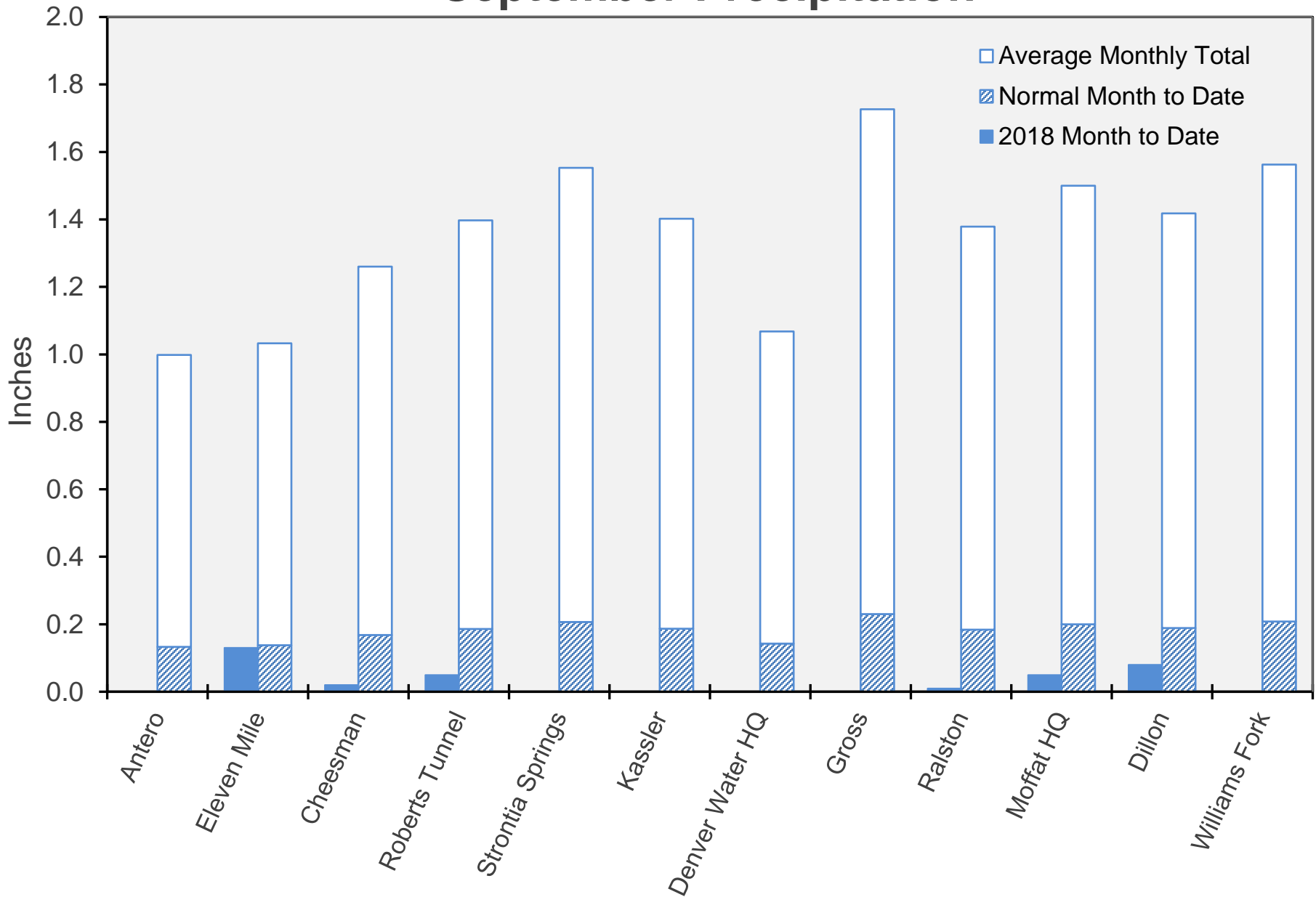
# Supply Reservoir Contents



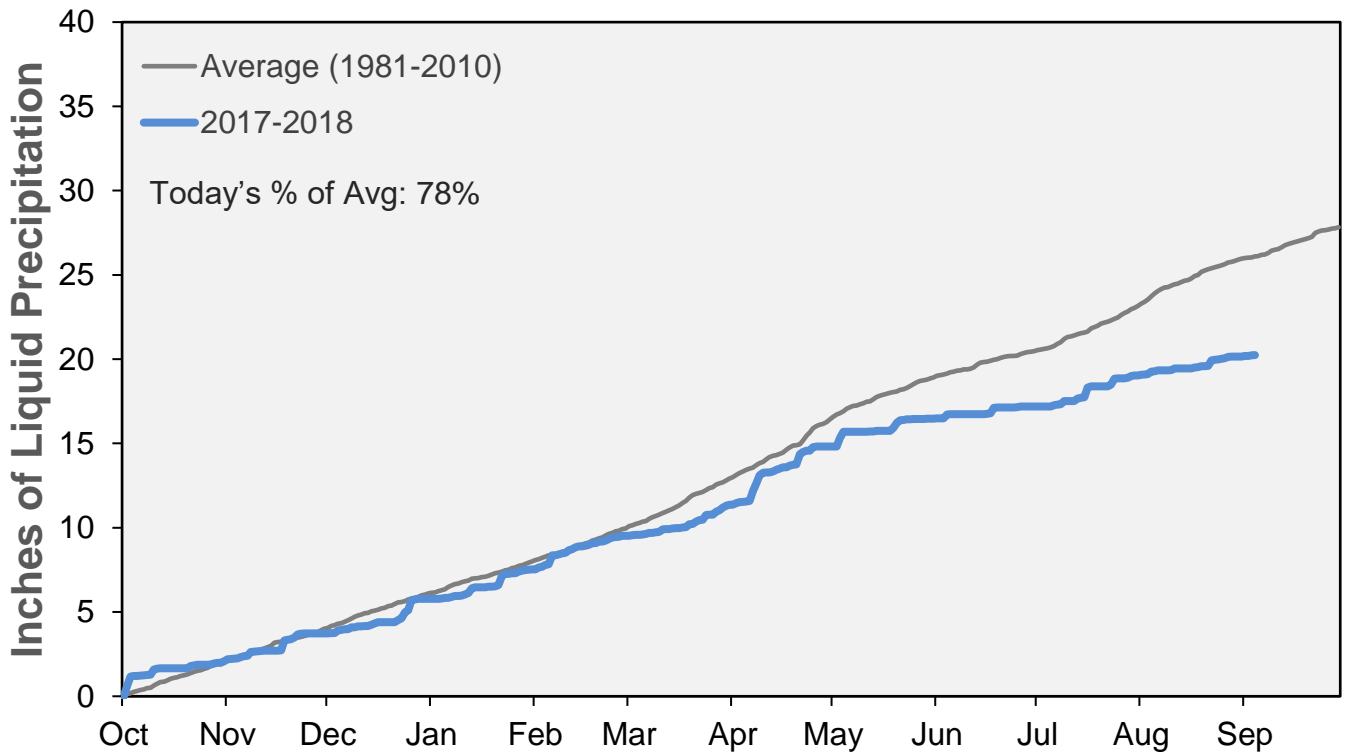
Note: Denver Water forecasts seasonal reservoir storage contents under dry future weather, normal future weather and wet future weather scenarios.

September 4, 2018

# September Precipitation

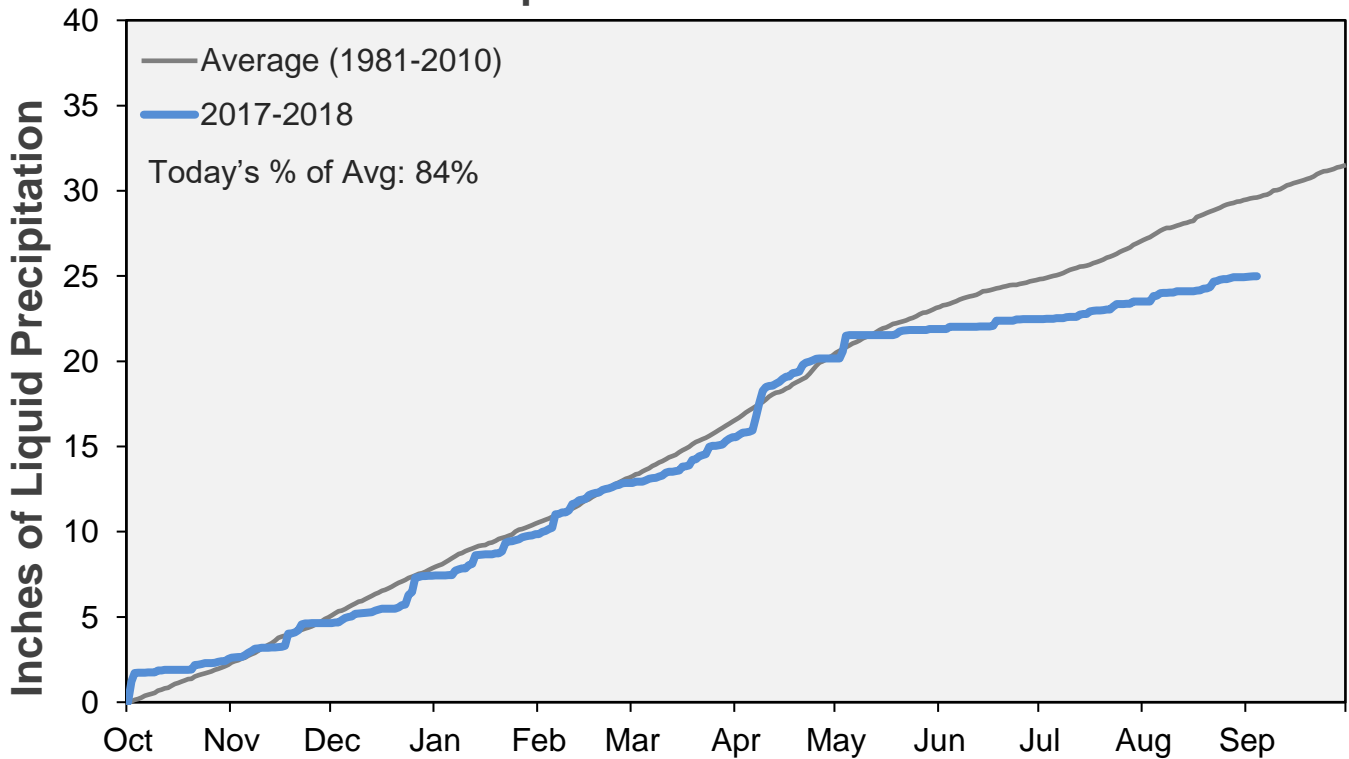


### Cumulative Precipitation: South Platte River Watershed



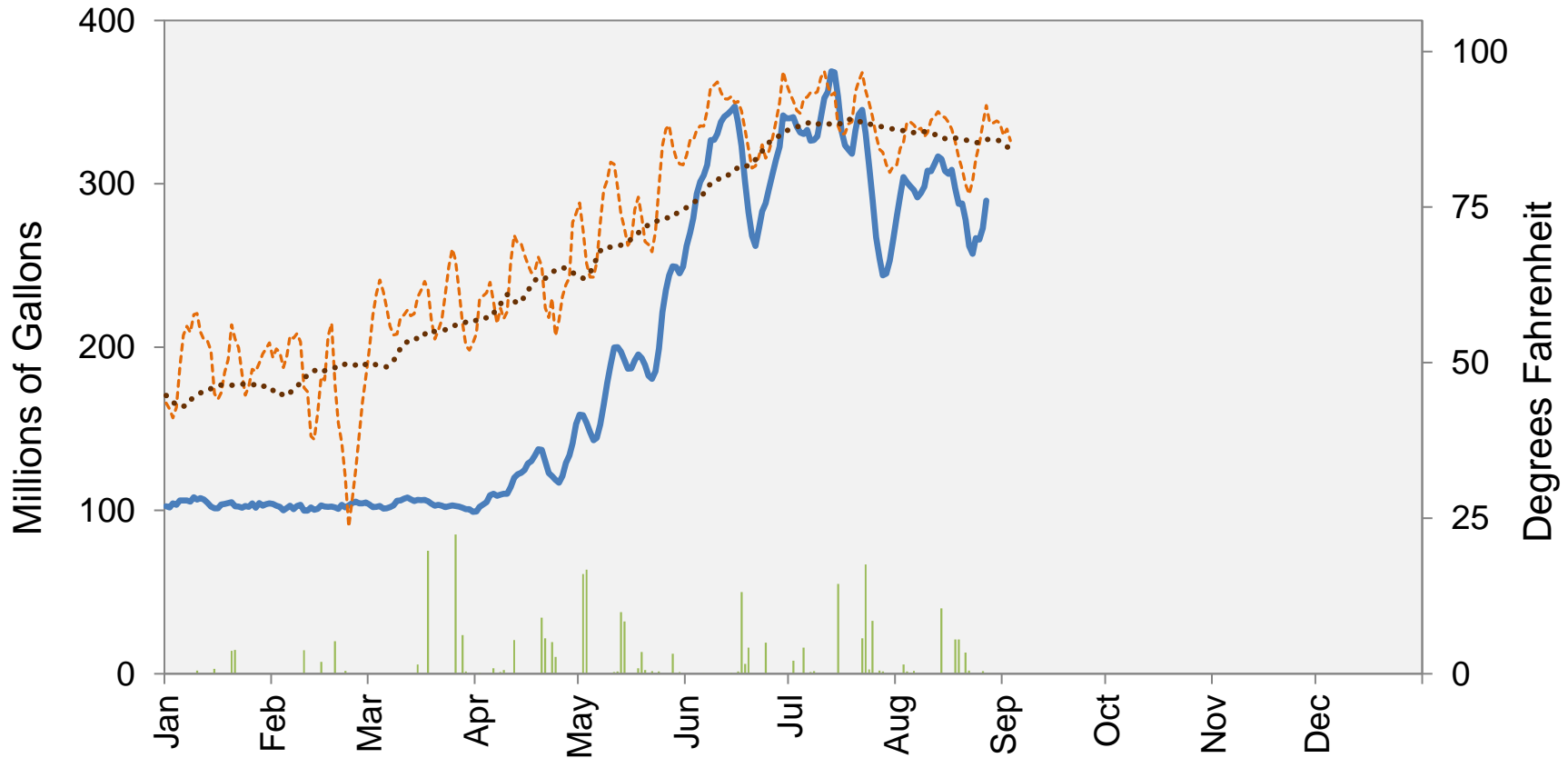
Data are from the 7 SNOTEL stations above Denver Water's Upper South Platte diversion facilities.

### Cumulative Precipitation: Colorado River Watershed



Data are from the 7 SNOTEL stations above Denver Water's Upper Colorado diversion facilities.

## 2018 Water Use and Weather Conditions



- Precipitation Event - Metro Avg.
- Water Use\*
- - - Daily High Temperature\*
- ..... Long-Term Avg. Daily High Temperature\*

\* Rolling 5-Day Avg.

September 4, 2018

Denver Water Use and Reservoir Contents 2018													
	Jan	Feb	Mar	Apr	May	Jun	Jul	Aug	Sep	Oct	Nov	Dec	YTD-Avg
Predicted End-of-Month Supply Reserv Contents (Full = 518,449 AF)													
Actual End-of-Month Supply Reservoir Contents (AF)	466,073	460,966	455,332	453,635	509,294	502,005	479,971	450,340					
Actual % Full	90%	89%	88%	87%	98%	97%	93%	87%					
Historical Median % Full	81%	80%	79%	79%	89%	98%	95%	92%					
12-17 Avg. Daily Use (MG)	109	109	108	126	167	263	293	278	241	149	108	104	182
Actual Daily Use (MG)	1	99	96	100	102	159	307	326	323				
	2	105	106	97	110	142	285	362	306				
	3	112	98	108	107	128	277	314	304				
	4	100	95	100	110	135	326	346	281				
	5	115	111	102	118	150	311	305	279				
	6	99	104	101	105	166	326	338	310				
	7	105	96	100	104	183	317	329	284				
	8	108	107	113	110	189	353	315	317				
	9	114	100	114	113	202	327	358	301				
D	10	107	93	103	118	207	331	364	327				
A	11	103	103	105	126	218	362	396	309				
Y	12	101	105	105	132	184	333	348	306				
	13	99	100	107	121	176	360	378	340				
O	14	102	102	109	117	176	338	354	293				
F	15	101	105	106	127	180	344	289	291				
	16	103	99	105	146	219	313	292	300				
M	17	112	105	105	139	209	261	304	318				
O	18	101	100	103	138	193	252	365	283				
N	19	105	100	102	137	165	244	342	246				
T	20	103	100	100	126	159	271	362	292				
H	21	91	112	107	110	186	282	340	249				
	22	111	97	103	104	200	314	319	240				
	23	97	106	99	129	217	305	292	259				
	24	111	107	104	125	234	268	242	294				
	25	101	104	103	117	271	318	257	287				
	26	102	106	105	131	253	326	226	284				
	27	98	97	101	144	244	358	253	324				
	28	111	109	95	152	244	343	241	294				
	29	102		100	163	233	365	248	317				
	30	105		103	175	251	309	297	304				
	31	104		97		274		291					
Monthly Average	104	102	103	125	198	314	316	295					195
% of 12-17 Avg. Daily Use	95%	94%	95%	99%	119%	120%	108%	106%					107%

Notes: 1) "AF" denotes acre-feet. "MG" denotes million gallons. 2) Expected Daily Use is based on historical use with normal weather conditions. 3) The predicted end-of-month supply reservoir contents figures assume normal weather after August 1, 2018. 4) The differences between predicted and actual end-of-month supply reservoir contents are the result of normal estimation error of daily use, supply, evaporation, carriage losses and raw water deliveries. 5) Predicted supply reservoir contents last updated on August 6, 2018. 6) Daily water figures are subject to change.