



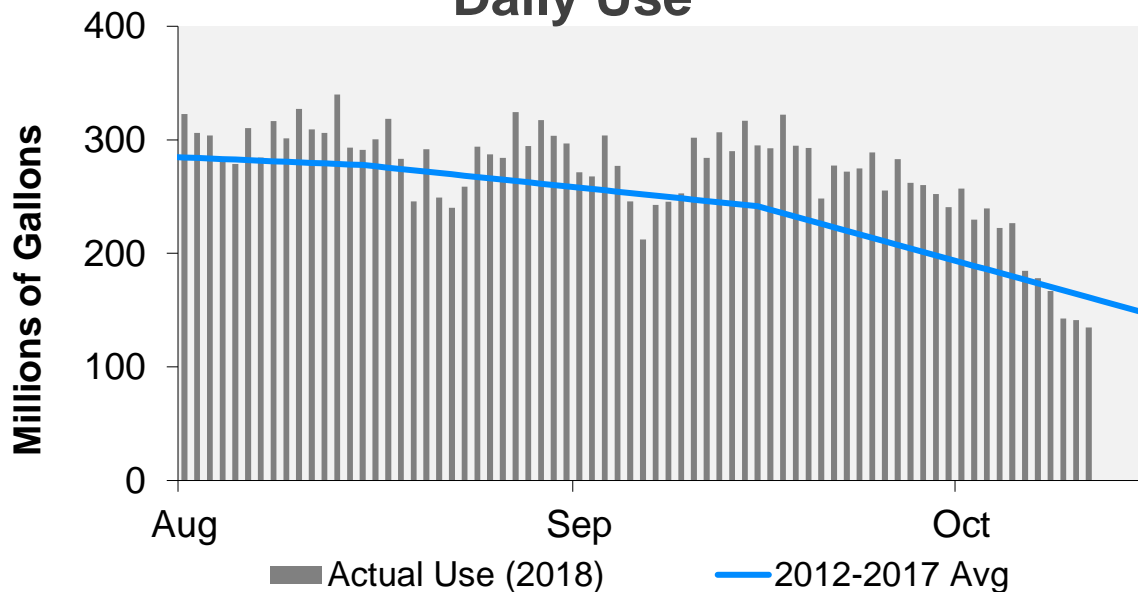
## WATER WATCH REPORT

October 15, 2018

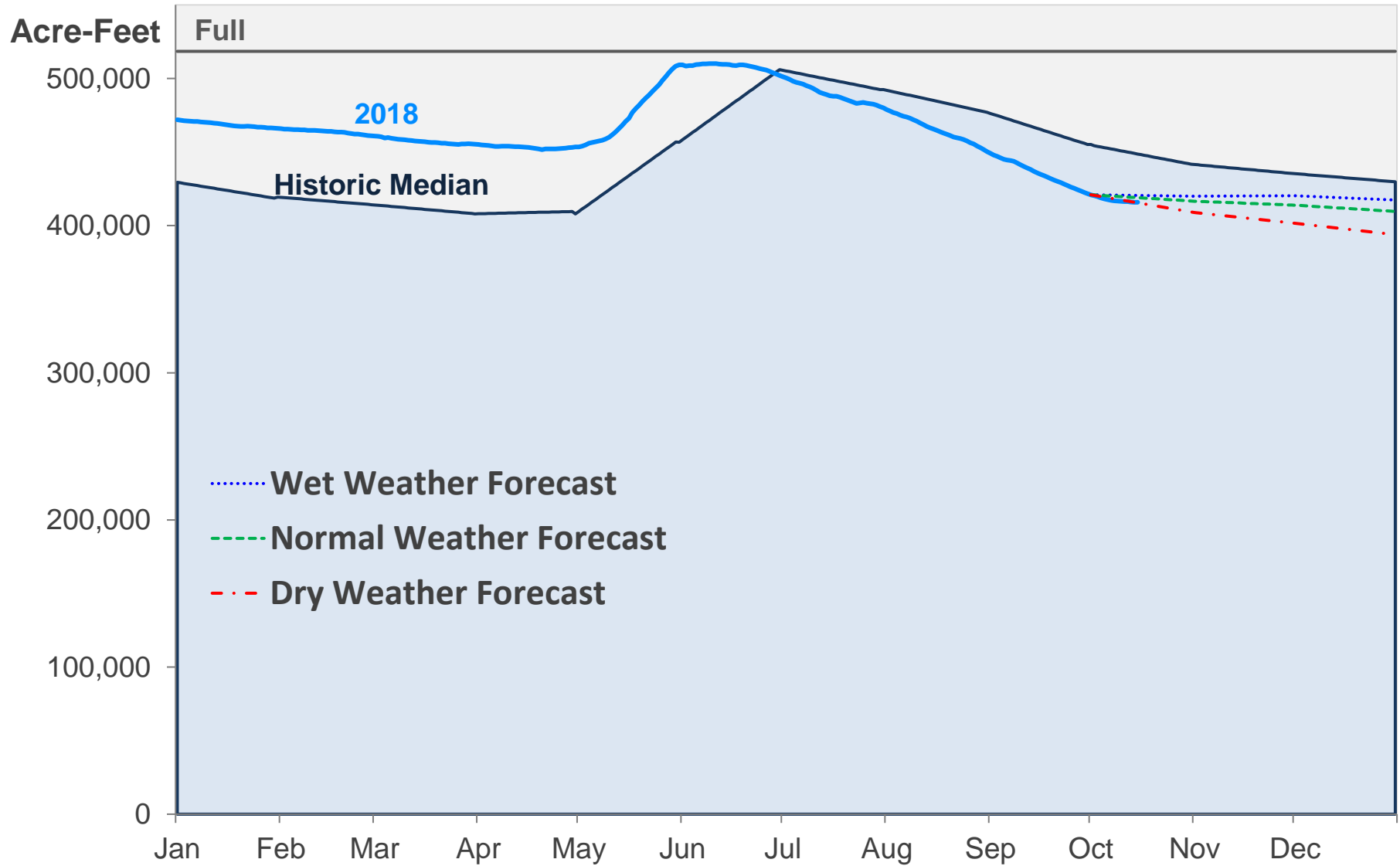
### Supply Reservoir Contents

| Reservoir        | Capacity             |                | Current Usable Contents<br>(acre-feet) | Percent Full |            |                 |
|------------------|----------------------|----------------|--|--------------|------------|-----------------|
|                  | Total<br>(acre-feet) | Usable         |  | Current      | Last Year  | Historic Median |
| Antero           | 19,881               | 19,826         | 18,438                                 | 93%          | 103%       | 99%             |
| Eleven Mile      | 97,779               | 97,779         | 99,864                                 | 102%         | 102%       | 102%            |
| Cheesman         | 79,064               | 79,064         | 53,176                                 | 67%          | 94%        | 83%             |
| Marston          | 19,256               | 13,133         | 11,660                                 | 89%          | 83%        | 41%             |
| Strontia Springs | 7,863                | 7,163          | 6,614                                  | 92%          | 90%        | 93%             |
| Chatfield        | 27,076               | 10,782         | 9,057                                  | 84%          | 69%        | 50%             |
| Dillon           | 257,304              | 249,095        | 189,670                                | 76%          | 96%        | 96%             |
| Gross            | 41,811               | 29,811         | 22,768                                 | 76%          | 59%        | 74%             |
| Ralston          | 10,776               | 7,276          | 4,400                                  | 60%          | 96%        | 65%             |
| Meadow Creek     | 5,370                | 4,520          | 250                                    | 6%           | 26%        | 34%             |
| <b>Total</b>     | <b>566,180</b>       | <b>518,449</b> | <b>415,898</b>                         | <b>80%</b>   | <b>93%</b> | <b>87%</b>      |

### Daily Use



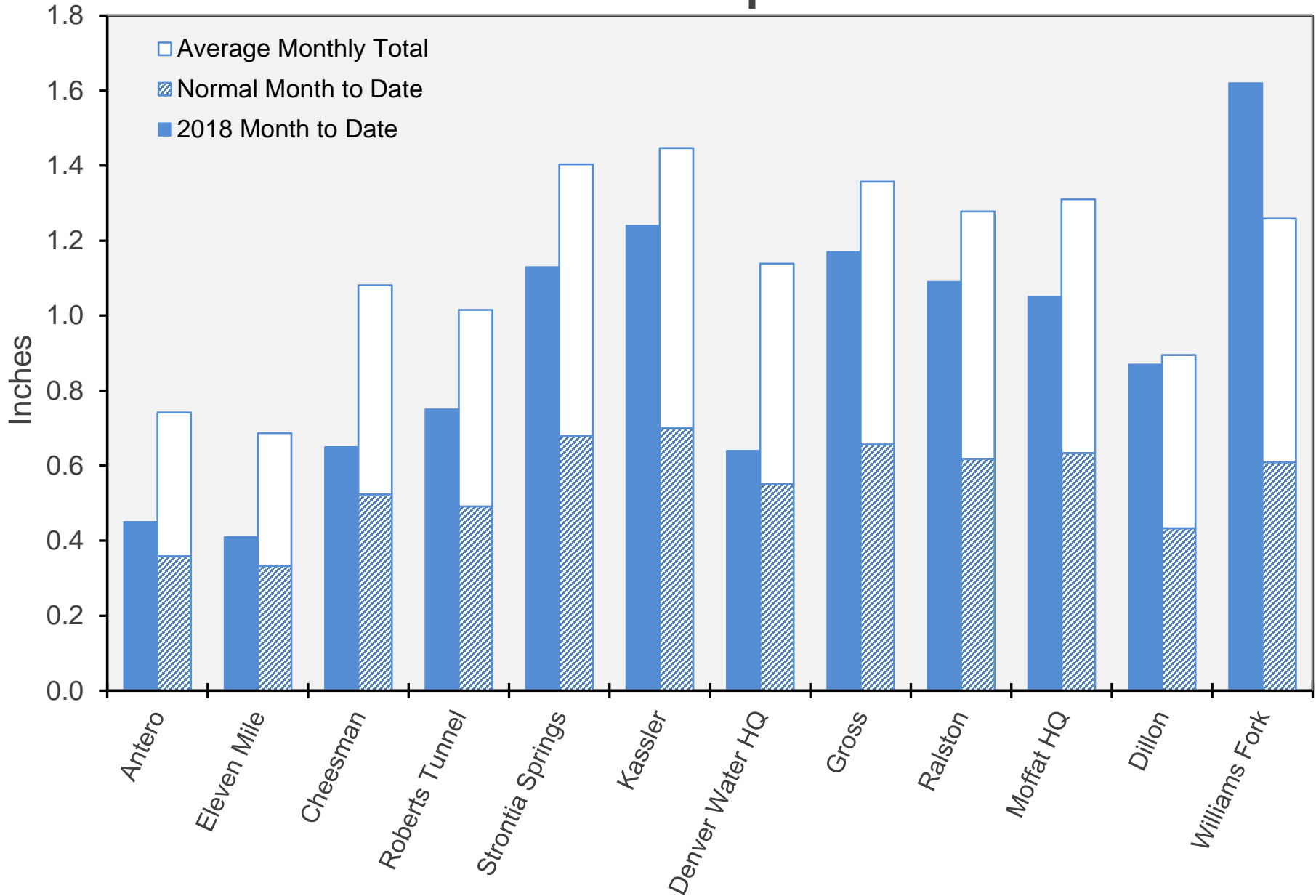
# Supply Reservoir Contents



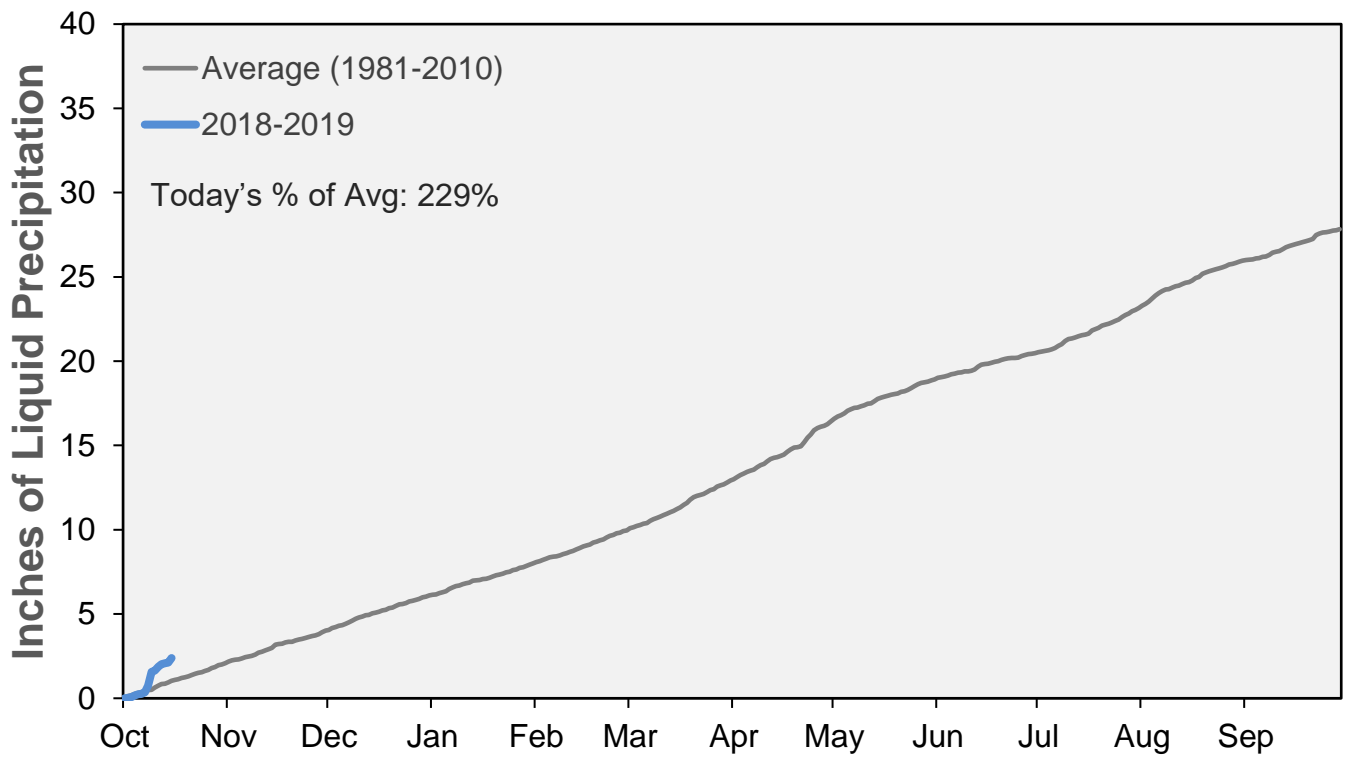
Note: Denver Water forecasts seasonal reservoir storage contents under dry future weather, normal future weather and wet future weather scenarios.

October 15, 2018

# October Precipitation

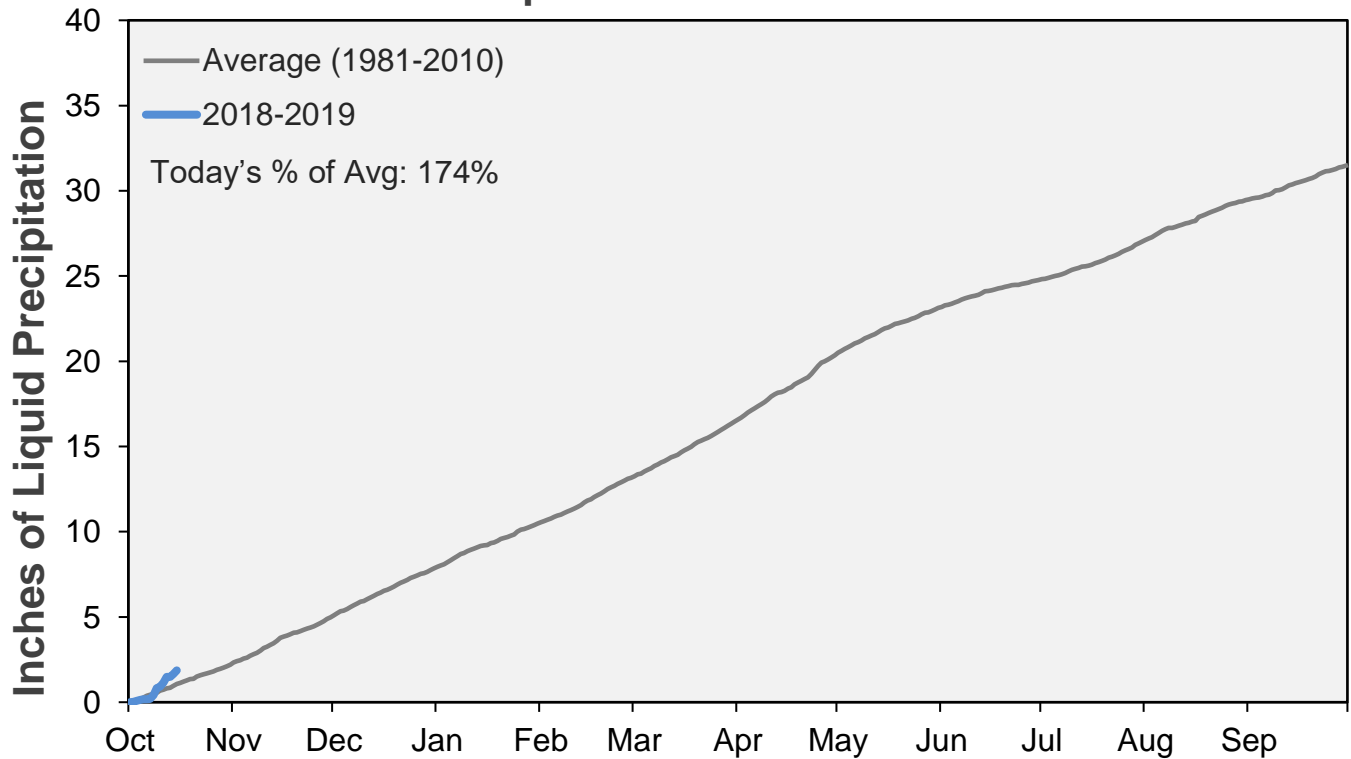


### Cumulative Precipitation: South Platte River Watershed



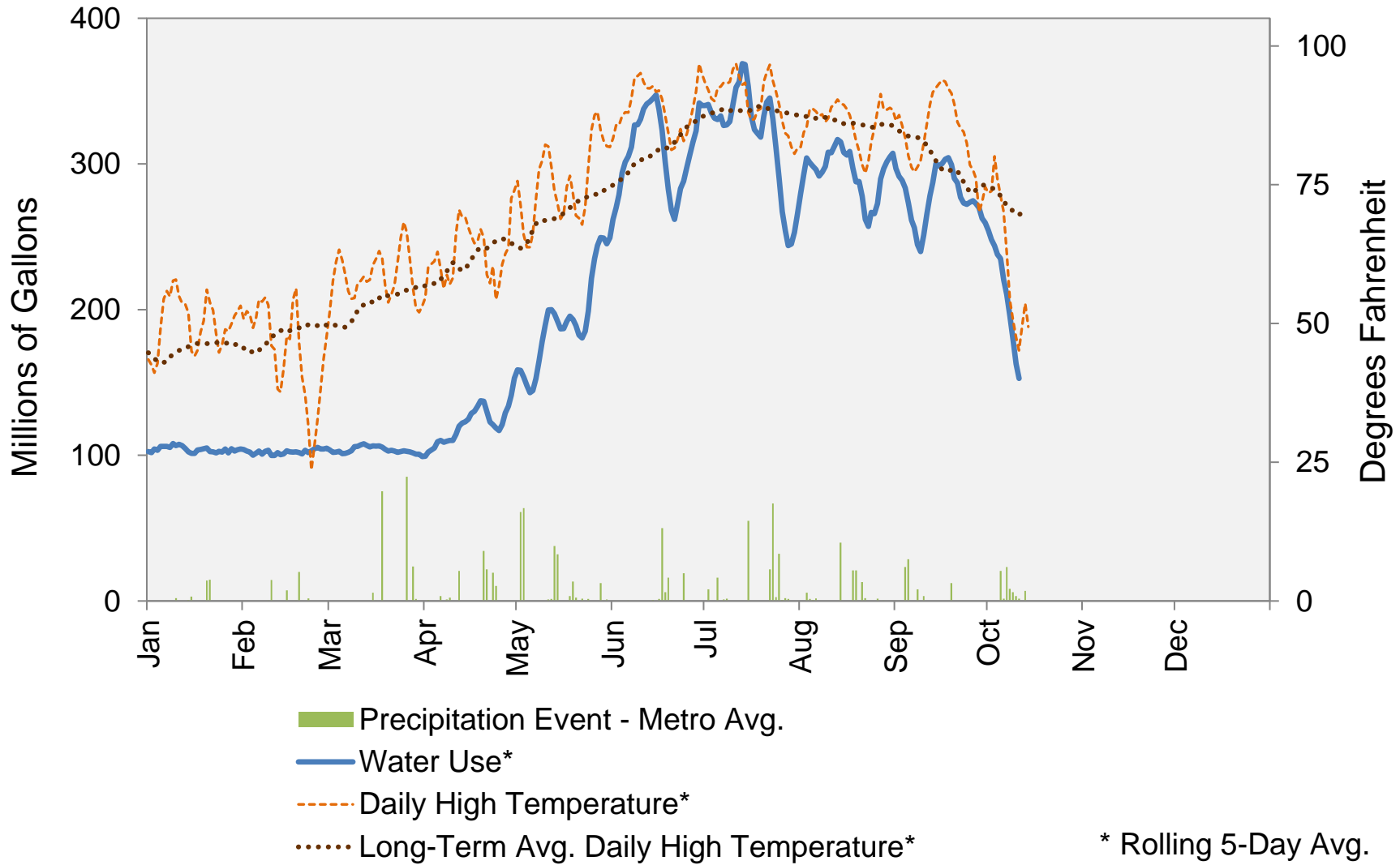
Data are from the 7 SNOTEL stations above Denver Water's Upper South Platte diversion facilities.

### Cumulative Precipitation: Colorado River Watershed



Data are from the 7 SNOTEL stations above Denver Water's Upper Colorado diversion facilities.

## 2018 Water Use and Weather Conditions



October 15, 2018

| Denver Water Use and Reservoir Contents 2018                         |         |         |         |         |         |         |         |         |         |      |     |     |         |
|--|---------|---------|---------|---------|---------|---------|---------|---------|---------|------|-----|-----|---------|
|  | Jan     | Feb     | Mar     | Apr     | May     | Jun     | Jul     | Aug     | Sep     | Oct  | Nov | Dec | YTD-Avg |
| Predicted End-of-Month Supply Reserv<br>Contents (Full = 518,449 AF) | 416,600 |         |         |         |         |         |         |         |         |      |     |     |         |
| Actual End-of-Month Supply<br>Reservoir Contents (AF)                | 466,073 | 460,966 | 455,332 | 453,635 | 509,294 | 502,005 | 479,971 | 450,340 | 421,740 |      |     |     |         |
| Actual % Full  | 90%     | 89%     | 88%     | 87%     | 98%     | 97%     | 93%     | 87%     | 81%     |      |     |     |         |
| Historical Median % Full   | 81%     | 80%     | 79%     | 79%     | 89%     | 98%     | 95%     | 92%     | 88%     |      |     |     |         |
| 12-17 Avg. Daily Use (MG)  | 109     | 109     | 108     | 126     | 167     | 263     | 293     | 278     | 241     | 149  | 108 | 104 | 187     |
| Actual Daily Use (MG)  | 1       | 99      | 96      | 100     | 102     | 159     | 307     | 326     | 323     | 271  | 257 |     |         |
|  | 2       | 105     | 106     | 97      | 110     | 142     | 285     | 362     | 306     | 268  | 230 |     |         |
|  | 3       | 112     | 98      | 108     | 107     | 128     | 277     | 314     | 304     | 304  | 239 |     |         |
|  | 4       | 100     | 95      | 100     | 110     | 135     | 326     | 346     | 281     | 277  | 222 |     |         |
|  | 5       | 115     | 111     | 102     | 118     | 150     | 311     | 305     | 279     | 246  | 227 |     |         |
|  | 6       | 99      | 104     | 101     | 105     | 166     | 326     | 338     | 310     | 212  | 185 |     |         |
|  | 7       | 105     | 96      | 100     | 104     | 183     | 317     | 329     | 284     | 243  | 178 |     |         |
|  | 8       | 108     | 107     | 113     | 110     | 189     | 353     | 315     | 317     | 245  | 167 |     |         |
|  | 9       | 114     | 100     | 114     | 113     | 202     | 327     | 358     | 301     | 253  | 143 |     |         |
| D  | 10      | 107     | 93      | 103     | 118     | 207     | 331     | 364     | 327     | 302  | 141 |     |         |
| A  | 11      | 103     | 103     | 105     | 126     | 218     | 362     | 396     | 309     | 284  | 135 |     |         |
| Y  | 12      | 101     | 105     | 105     | 132     | 184     | 333     | 348     | 306     | 307  |     |     |         |
|  | 13      | 99      | 100     | 107     | 121     | 176     | 360     | 378     | 340     | 290  |     |     |         |
| O  | 14      | 102     | 102     | 109     | 117     | 176     | 338     | 354     | 293     | 317  |     |     |         |
| F  | 15      | 101     | 105     | 106     | 127     | 180     | 344     | 289     | 291     | 295  |     |     |         |
|  | 16      | 103     | 99      | 105     | 146     | 219     | 313     | 292     | 300     | 292  |     |     |         |
| M  | 17      | 112     | 105     | 105     | 139     | 209     | 261     | 304     | 318     | 322  |     |     |         |
| O  | 18      | 101     | 100     | 103     | 138     | 193     | 252     | 365     | 283     | 295  |     |     |         |
| N  | 19      | 105     | 100     | 102     | 137     | 165     | 244     | 342     | 246     | 293  |     |     |         |
| T  | 20      | 103     | 100     | 100     | 126     | 159     | 271     | 362     | 292     | 248  |     |     |         |
| H  | 21      | 91      | 112     | 107     | 110     | 186     | 282     | 340     | 249     | 277  |     |     |         |
|  | 22      | 111     | 97      | 103     | 104     | 200     | 314     | 319     | 240     | 272  |     |     |         |
|  | 23      | 97      | 106     | 99      | 129     | 217     | 305     | 292     | 259     | 275  |     |     |         |
|  | 24      | 111     | 107     | 104     | 125     | 234     | 268     | 242     | 294     | 289  |     |     |         |
|  | 25      | 101     | 104     | 103     | 117     | 271     | 318     | 257     | 287     | 255  |     |     |         |
|  | 26      | 102     | 106     | 105     | 131     | 253     | 326     | 226     | 284     | 283  |     |     |         |
|  | 27      | 98      | 97      | 101     | 144     | 244     | 358     | 253     | 324     | 262  |     |     |         |
|  | 28      | 111     | 109     | 95      | 152     | 244     | 343     | 241     | 294     | 260  |     |     |         |
|  | 29      | 102     |         | 100     | 163     | 233     | 365     | 248     | 317     | 252  |     |     |         |
|  | 30      | 105     |         | 103     | 175     | 251     | 309     | 297     | 304     | 241  |     |     |         |
|  | 31      | 104     |         | 97      |         | 274     |         | 291     | 297     |      |     |     |         |
| Monthly Average  | 104     | 102     | 103     | 125     | 198     | 314     | 316     | 296     | 274     | 193  |     |     | 204     |
| % of 12-17 Avg. Daily Use  | 95%     | 94%     | 95%     | 99%     | 119%    | 120%    | 108%    | 106%    | 114%    | 130% |     |     | 109%    |

Notes: 1) "AF" denotes acre-feet. "MG" denotes million gallons. 2) Expected Daily Use is based on historical use with normal weather conditions. 3) The predicted end-of-month supply reservoir contents figures assume normal weather after October 1, 2018. 4) The differences between predicted and actual end-of-month supply reservoir contents are the result of normal estimation error of daily use, supply, evaporation, carriage losses and raw water deliveries. 5) Predicted supply reservoir contents last updated on October 8, 2018. 6) Daily water figures are subject to change.