



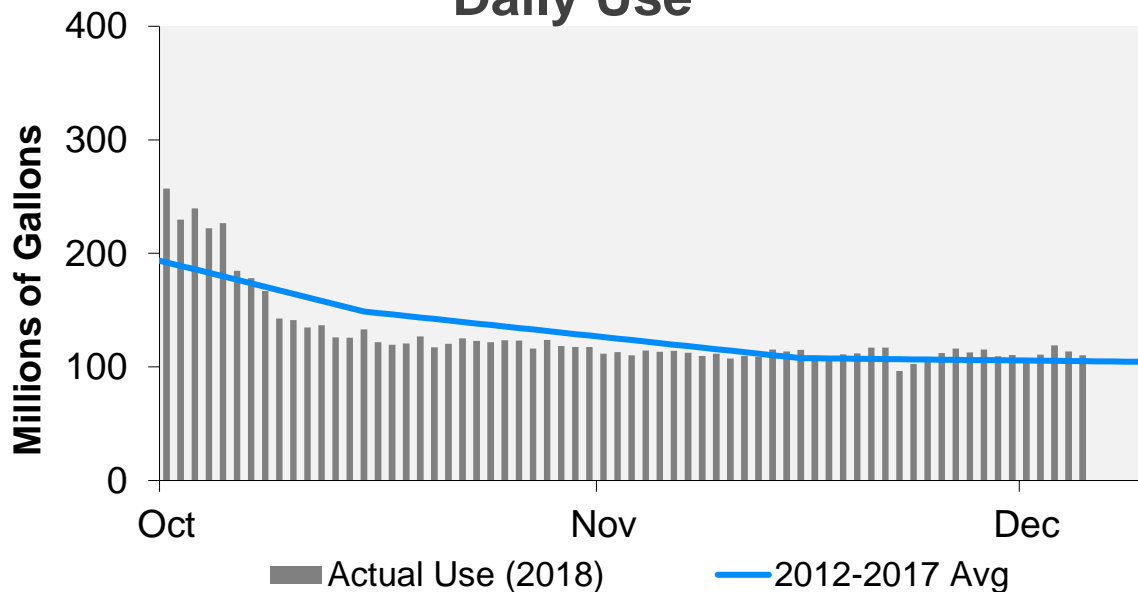
WATER WATCH REPORT

December 10, 2018

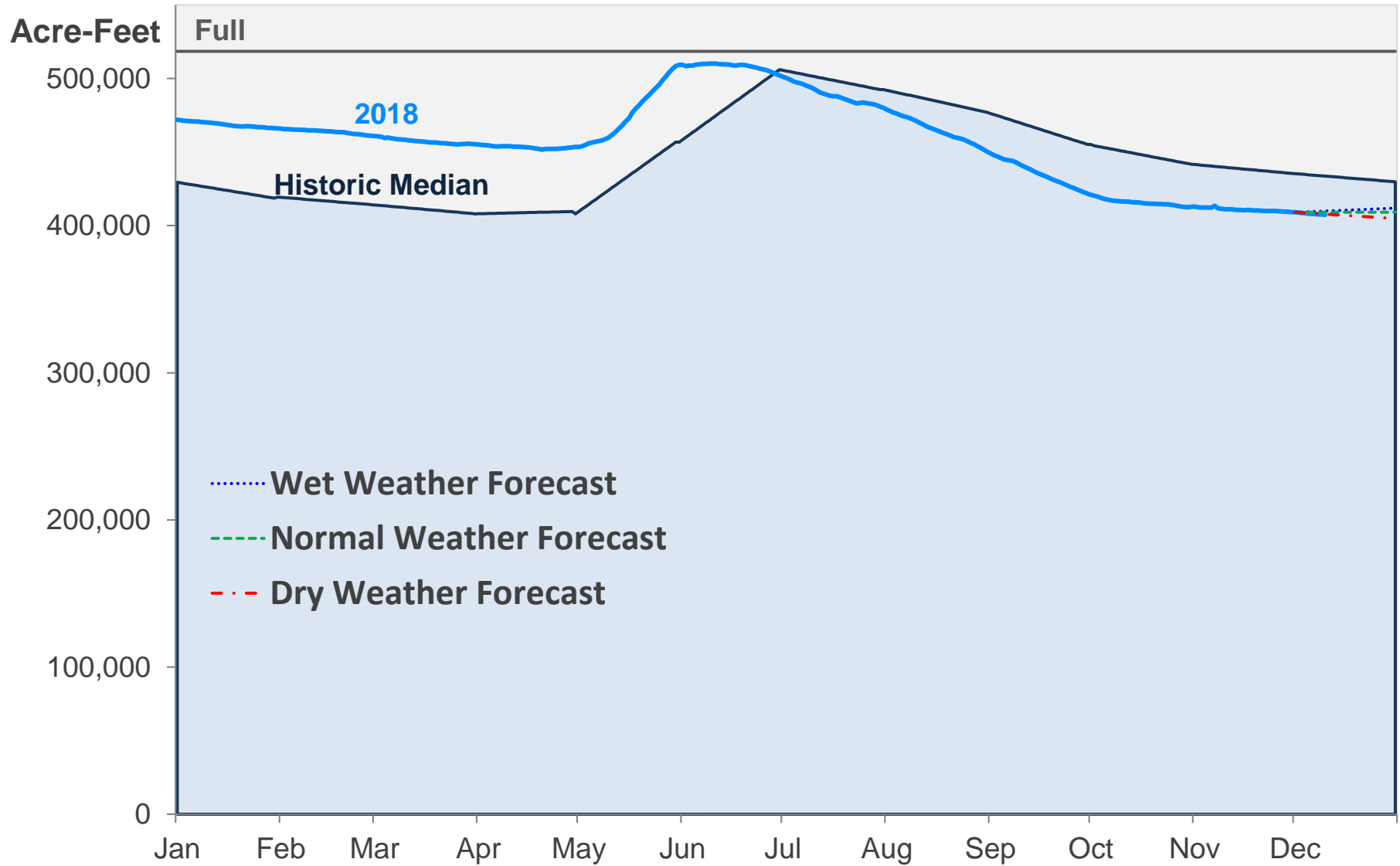
Supply Reservoir Contents

Reservoir	Capacity		Current Usable Contents (acre-feet)	Percent Full		
	(acre-feet)			Last Year	Historic Median	
	Total	Usable	Current			
Antero	19,881	19,826	18,711	94%	102%	100%
Eleven Mile	97,779	97,779	99,933	102%	102%	102%
Cheesman	79,064	79,064	59,539	75%	94%	82%
Marston	19,256	13,133	10,507	80%	61%	63%
Strontia Springs	7,863	7,163	6,502	91%	85%	92%
Chatfield	27,076	10,782	10,351	96%	76%	52%
Dillon	257,304	249,095	179,756	72%	96%	94%
Gross	41,811	29,811	18,163	61%	68%	60%
Ralston	10,776	7,276	5,236	72%	48%	68%
Meadow Creek	5,370	4,520	0	0%	26%	19%
Total	566,180	518,449	408,699	79%	92%	84%

Daily Use



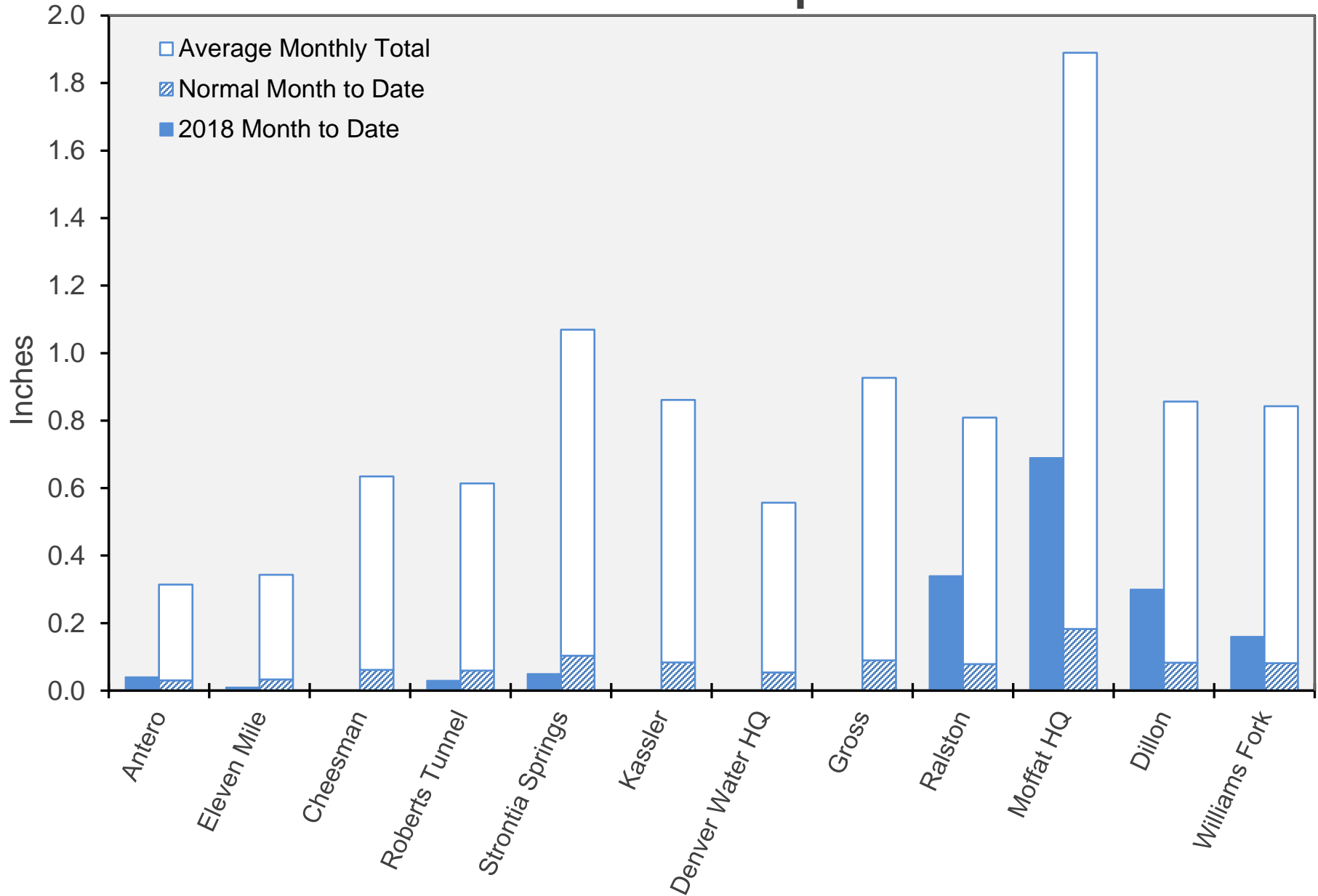
Supply Reservoir Contents



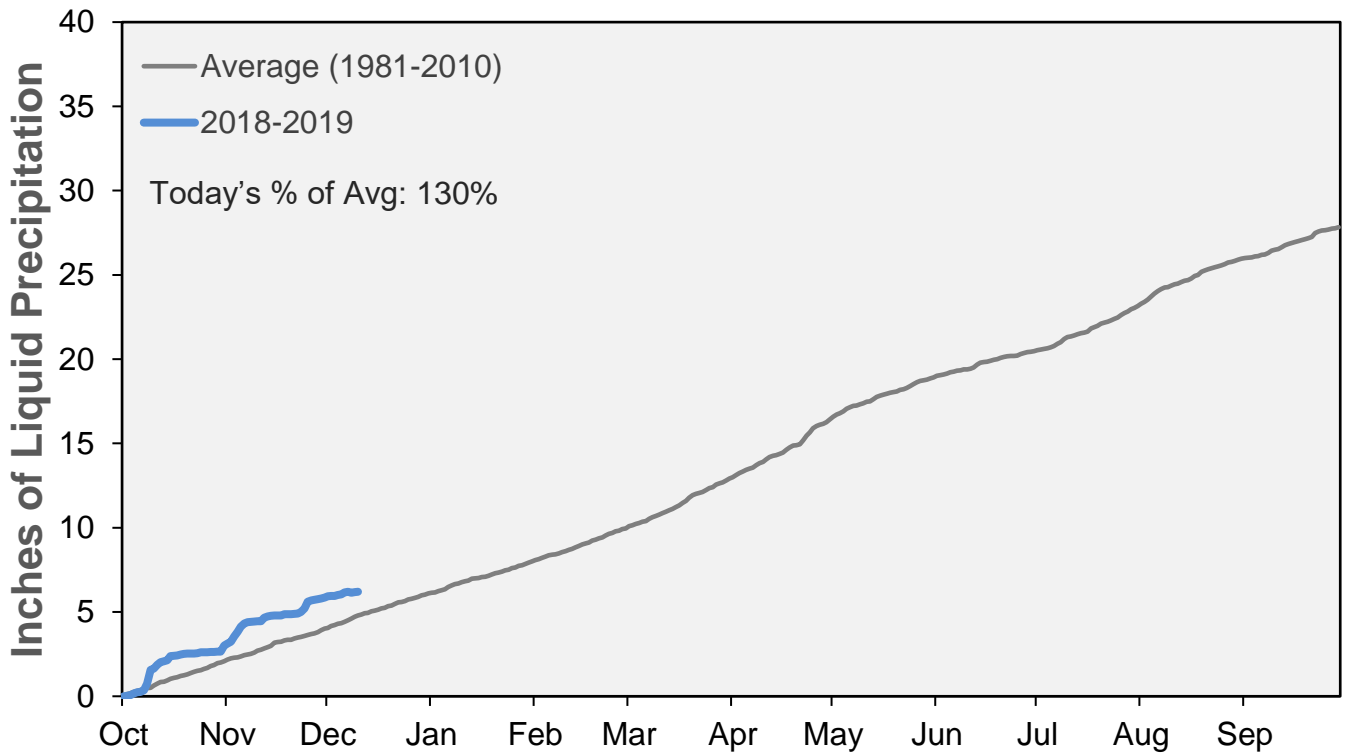
Note: Denver Water forecasts seasonal reservoir storage contents under dry future weather, normal future weather and wet future weather scenarios.

December 10, 2018

December Precipitation

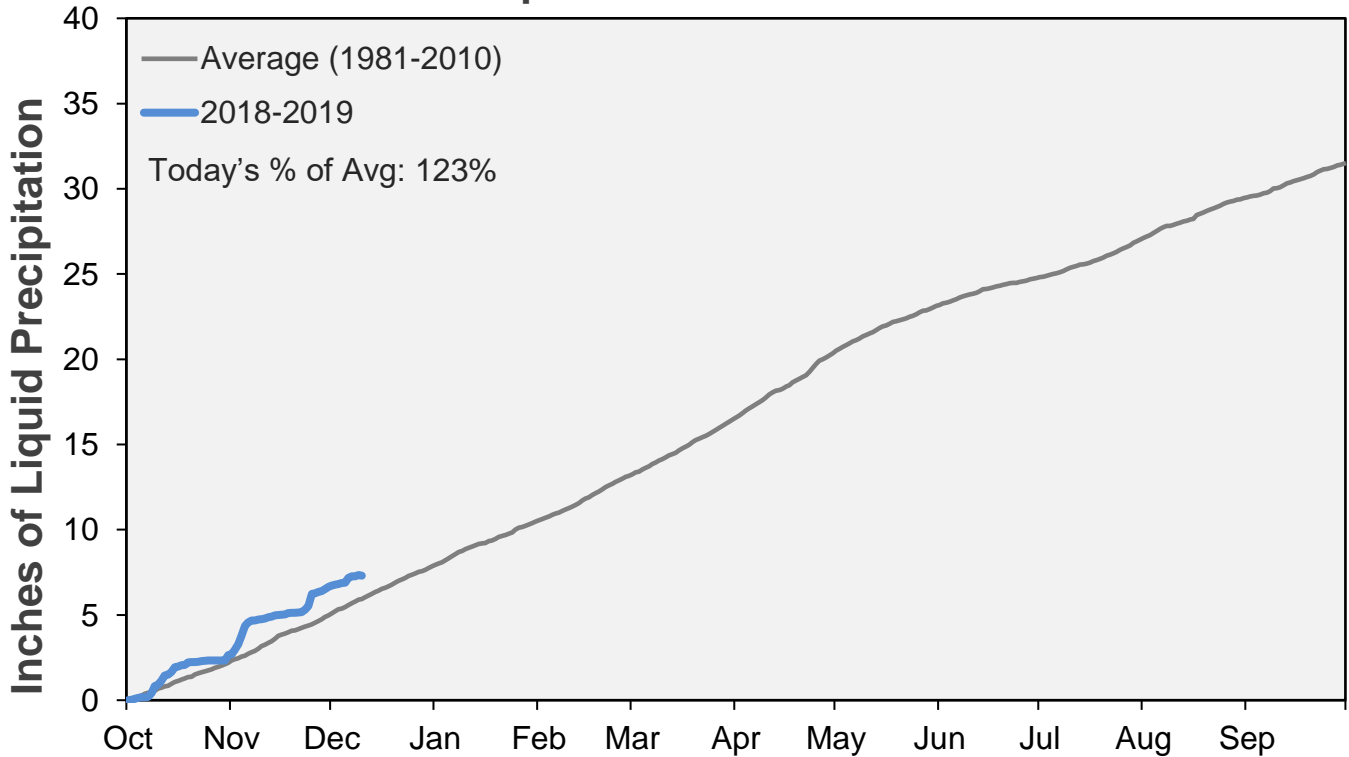


Cumulative Precipitation: South Platte River Watershed



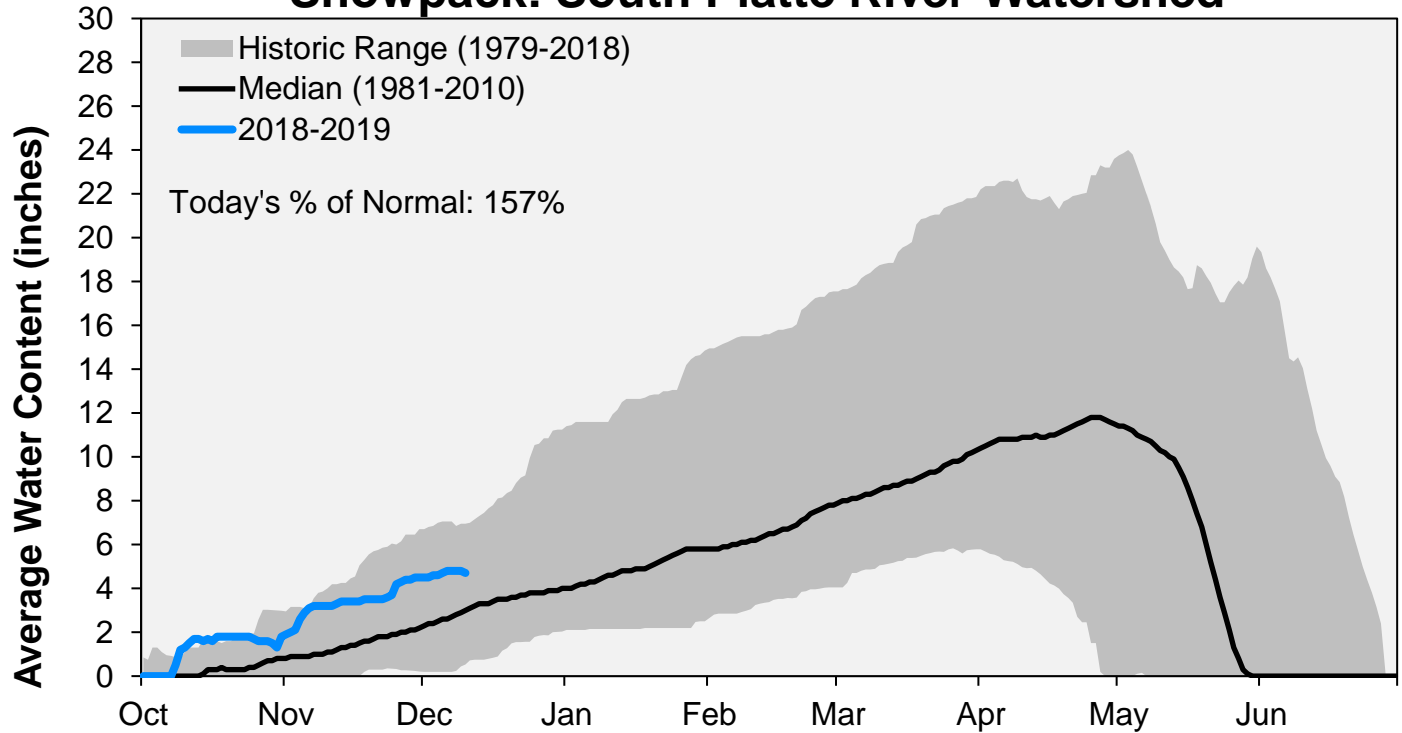
Data are from the 7 SNOTEL stations above Denver Water's Upper South Platte diversion facilities.

Cumulative Precipitation: Colorado River Watershed



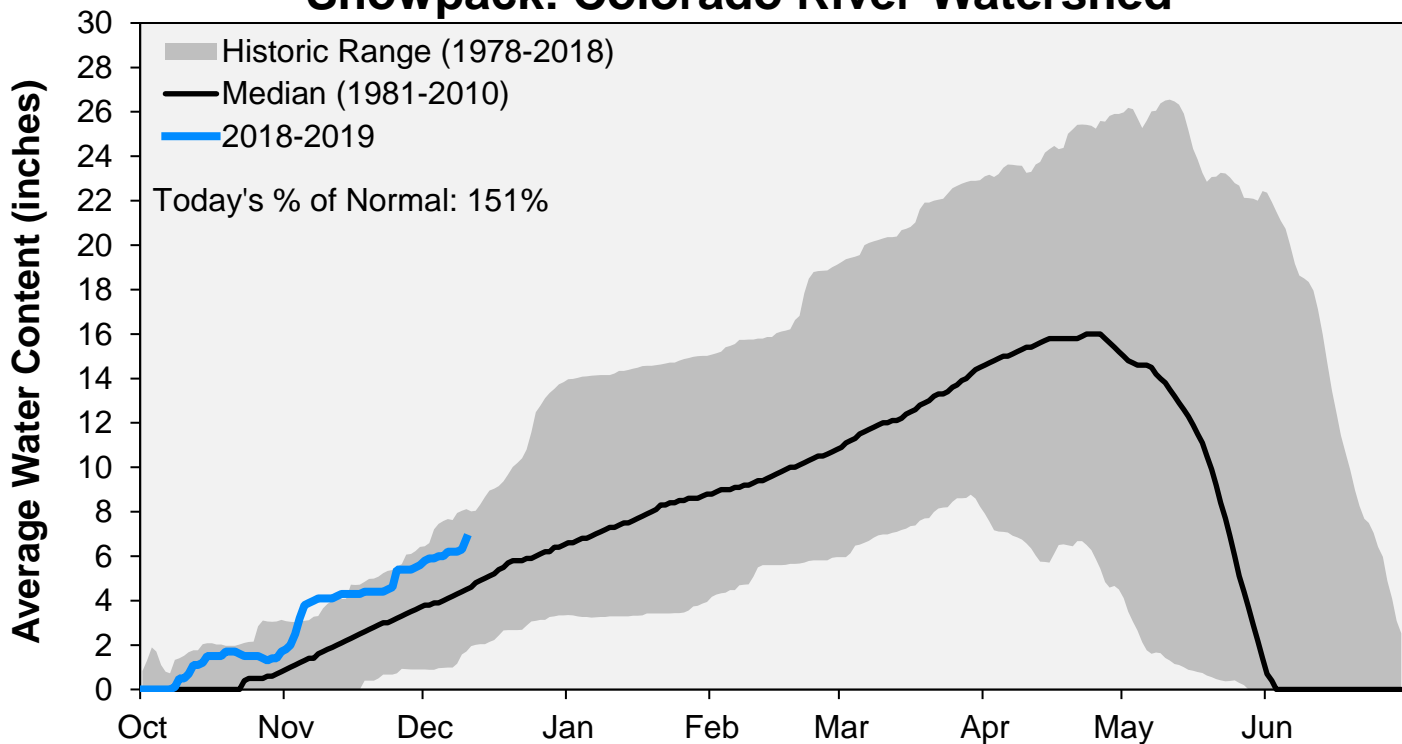
Data are from the 7 SNOTEL stations above Denver Water's Upper Colorado diversion facilities.

Snowpack: South Platte River Watershed



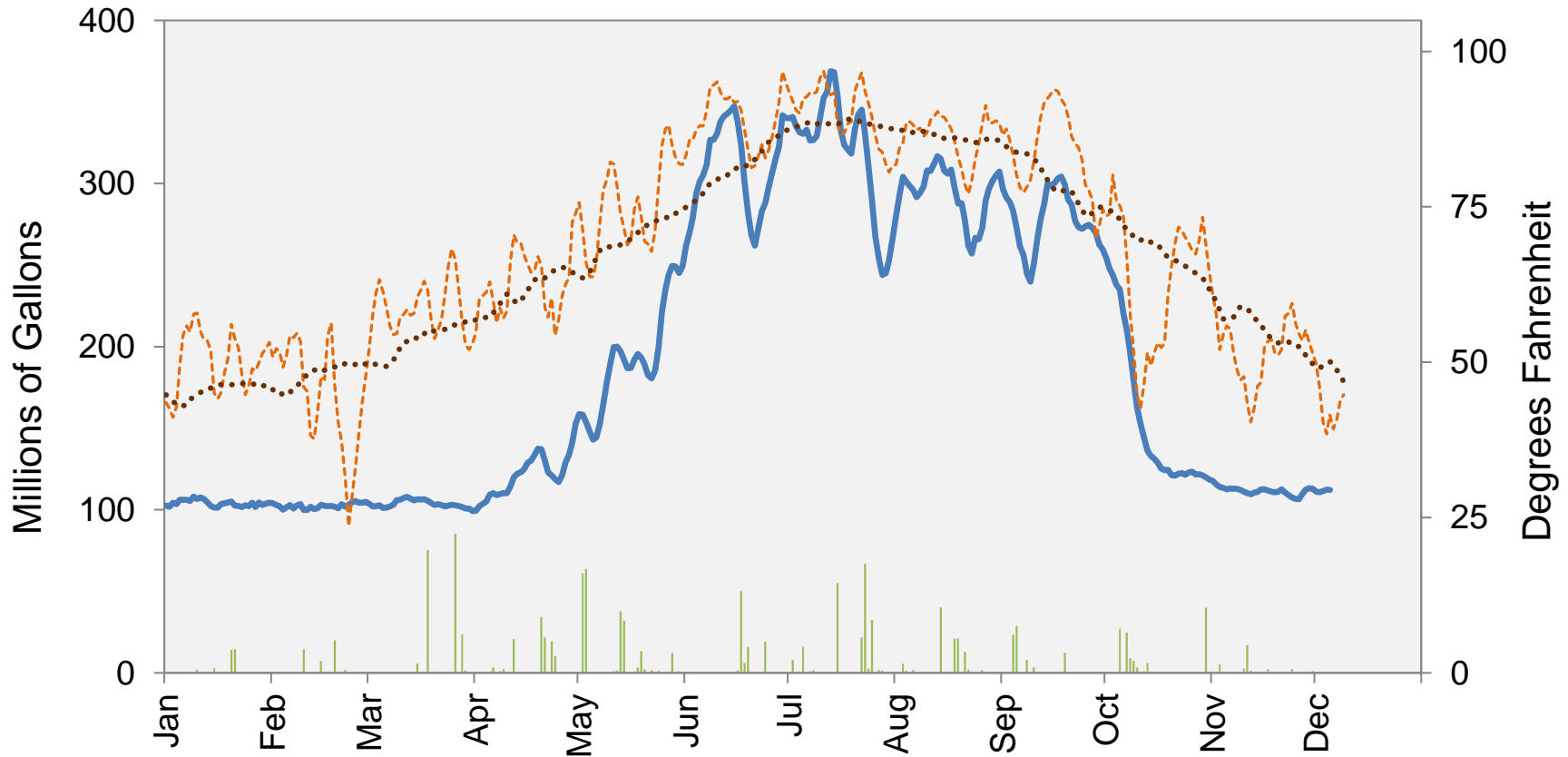
Data are from the 7 Snotel stations above Denver Water's Upper South Platte diversion facilities.

Snowpack: Colorado River Watershed



Data are from the 7 Snotel stations above Denver Water's Upper Colorado diversion facilities.

2018 Water Use and Weather Conditions



- Precipitation Event - Metro Avg.
- Water Use*
- - - Daily High Temperature*
- Long-Term Avg. Daily High Temperature*

* Rolling 5-Day Avg.

December 10, 2018

Denver Water Use and Reservoir Contents 2018													
	Jan	Feb	Mar	Apr	May	Jun	Jul	Aug	Sep	Oct	Nov	Dec	YTD-Avg
Predicted End-of-Month Supply Reserv Contents (Full = 518,449 AF)												409,200	
Actual End-of-Month Supply Reservoir Contents (AF)	466,073	460,966	455,332	453,635	509,294	502,005	479,971	450,340	421,740	412,798	409,197		
Actual % Full	90%	89%	88%	87%	98%	97%	93%	87%	81%	80%	79%		
Historical Median % Full	81%	80%	79%	79%	89%	98%	95%	92%	88%	85%	84%		
12-17 Avg. Daily Use (MG)	109	109	108	126	167	263	293	278	241	149	108	104	177
Actual Daily Use (MG)	1	99	96	100	102	159	307	326	323	271	257	112	107
	2	105	106	97	110	142	285	362	306	268	230	113	111
	3	112	98	108	107	128	277	314	304	304	239	110	119
	4	100	95	100	110	135	326	346	281	277	222	114	114
	5	115	111	102	118	150	311	305	279	246	227	113	110
	6	99	104	101	105	166	326	338	310	212	185	114	
	7	105	96	100	104	183	317	329	284	243	178	112	
	8	108	107	113	110	189	353	315	317	245	167	110	
	9	114	100	114	113	202	327	358	301	253	143	112	
D	10	107	93	103	118	207	331	364	327	302	141	107	
A	11	103	103	105	126	218	362	396	309	284	135	110	
Y	12	101	105	105	132	184	333	348	306	307	137	109	
	13	99	100	107	121	176	360	378	340	290	126	115	
O	14	102	102	109	117	176	338	354	293	317	126	114	
F	15	101	105	106	127	180	344	289	291	295	133	115	
	16	103	99	105	146	219	313	292	300	292	122	110	
M	17	112	105	105	139	209	261	304	318	322	120	106	
O	18	101	100	103	138	193	252	365	283	295	121	111	
N	19	105	100	102	137	165	244	342	246	293	127	112	
T	20	103	100	100	126	159	271	362	292	248	117	117	
H	21	91	112	107	110	186	282	340	249	277	120	117	
	22	111	97	103	104	200	314	319	240	272	125	96	
	23	97	106	99	129	217	305	292	259	275	123	103	
	24	111	107	104	125	234	268	242	294	289	122	105	
	25	101	104	103	117	271	318	257	287	255	124	112	
	26	102	106	105	131	253	326	226	284	283	123	116	
	27	98	97	101	144	244	358	253	324	262	116	113	
	28	111	109	95	152	244	343	241	294	260	124	115	
	29	102		100	163	233	365	248	317	252	118	109	
	30	105		103	175	251	309	297	304	241	117	111	
	31	104		97		274		291	297		118		
Monthly Average	104	102	103	125	198	314	316	296	274	148	111	112	190
% of 12-17 Avg. Daily Use	95%	94%	95%	99%	119%	120%	108%	106%	114%	99%	103%	108%	107%

Notes: 1) "AF" denotes acre-feet. "MG" denotes million gallons. 2) Expected Daily Use is based on historical use with normal weather conditions. 3) The predicted end-of-month supply reservoir contents figures assume normal weather after December 1, 2018. 4) The differences between predicted and actual end-of-month supply reservoir contents are the result of normal estimation error of daily use, supply, evaporation, carriage losses and raw water deliveries. 5) Predicted supply reservoir contents last updated on December 5, 2018. 6) Daily water figures are subject to change.