



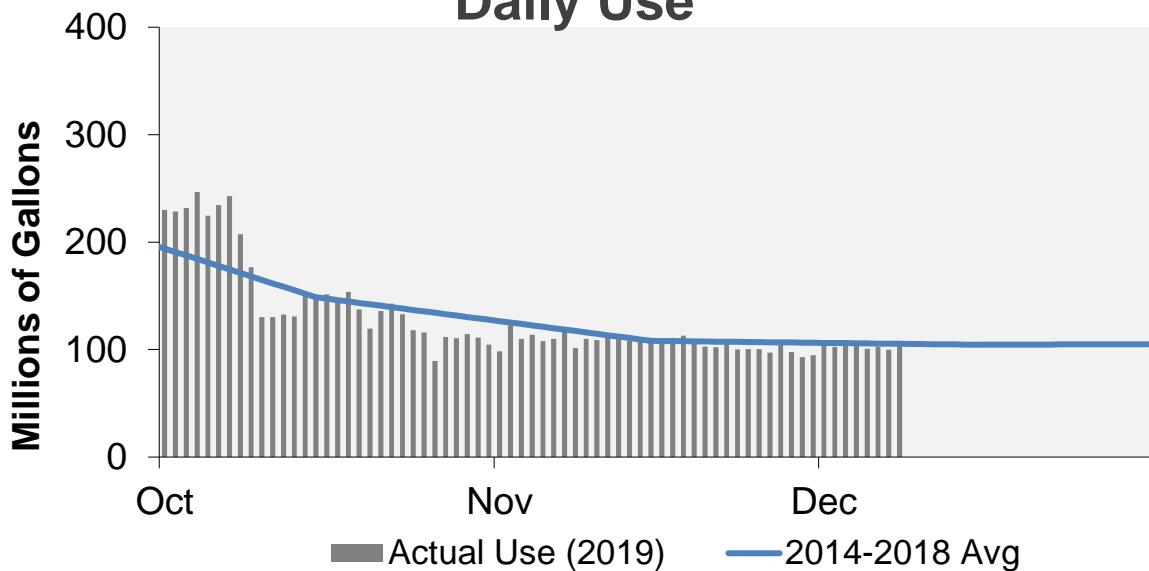
# WATER WATCH REPORT

December 9, 2019

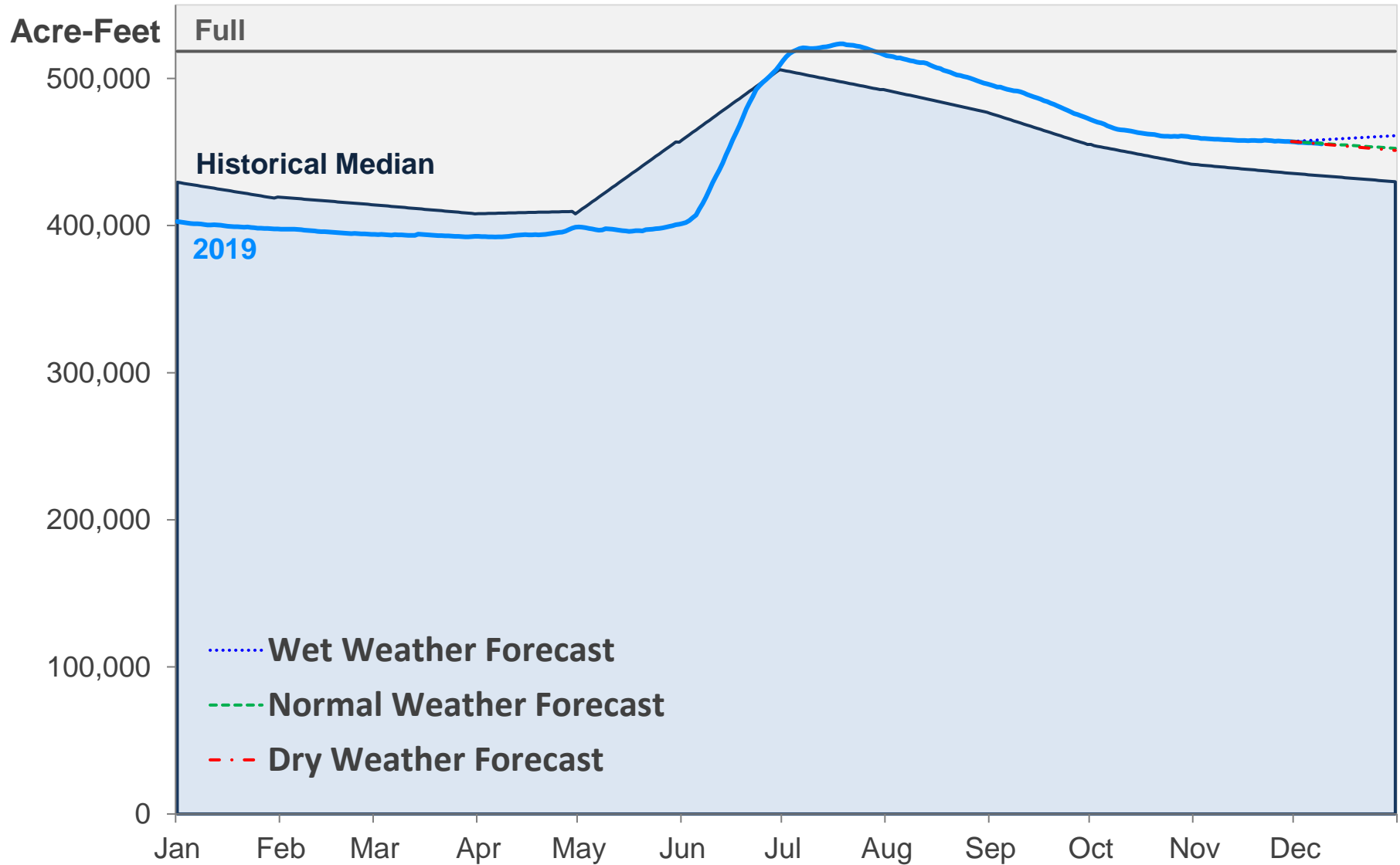
## Supply Reservoir Contents

Reservoir	Capacity		Current Usable Contents (acre-feet)	Percent Full		
	(acre-feet)			Last Year	Historical Median	
	Total	Usable	Current			
Antero	19,881	19,826	19,825	100%	94%	100%
Eleven Mile	97,779	97,779	99,452	102%	102%	102%
Cheesman	79,064	79,064	64,310	81%	76%	83%
Marston	19,256	13,133	9,394	72%	79%	61%
Strontia Springs	7,863	7,163	6,355	89%	95%	92%
Chatfield	27,076	10,782	7,336	68%	96%	55%
Dillon	257,304	249,095	222,318	89%	72%	93%
Gross	41,811	29,811	22,626	76%	57%	59%
Ralston	10,776	7,276	3,955	54%	78%	69%
Meadow Creek	5,370	4,520	0	0%	0%	19%
<b>Total</b>	<b>566,180</b>	<b>518,449</b>	<b>455,571</b>	<b>88%</b>	<b>79%</b>	<b>84%</b>

## Daily Use



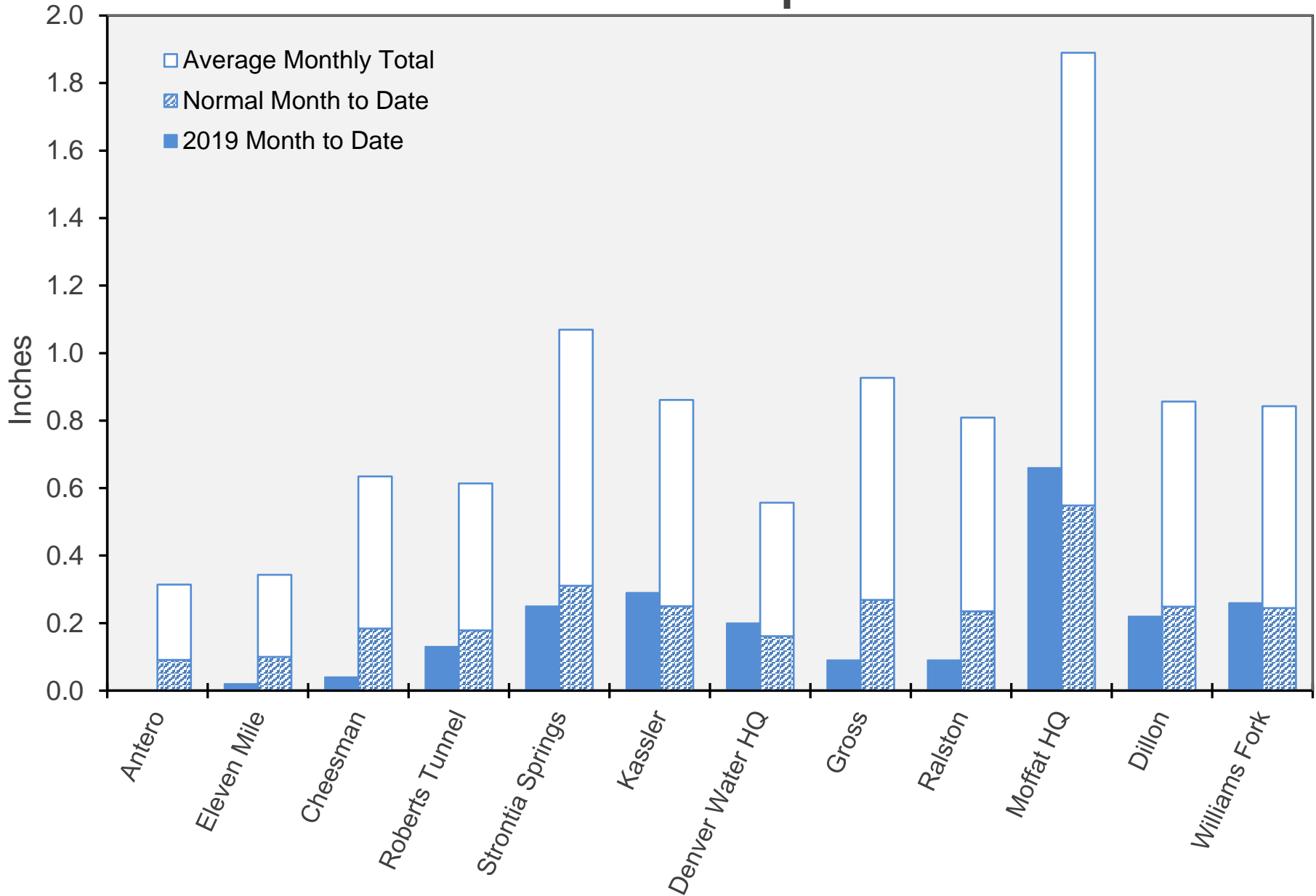
# Supply Reservoir Contents



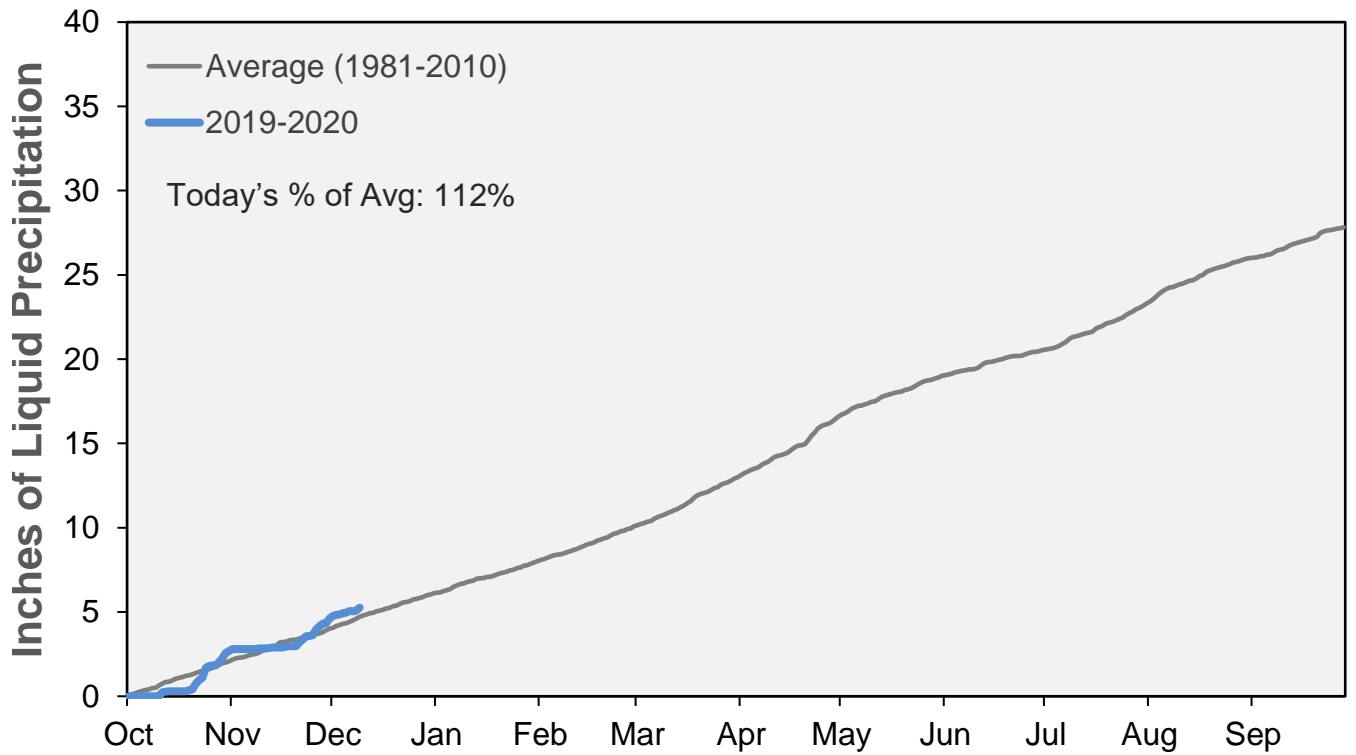
Note: Denver Water forecasts seasonal reservoir storage contents under dry future weather, normal future weather and wet future weather scenarios.

December 9, 2019

# December Precipitation

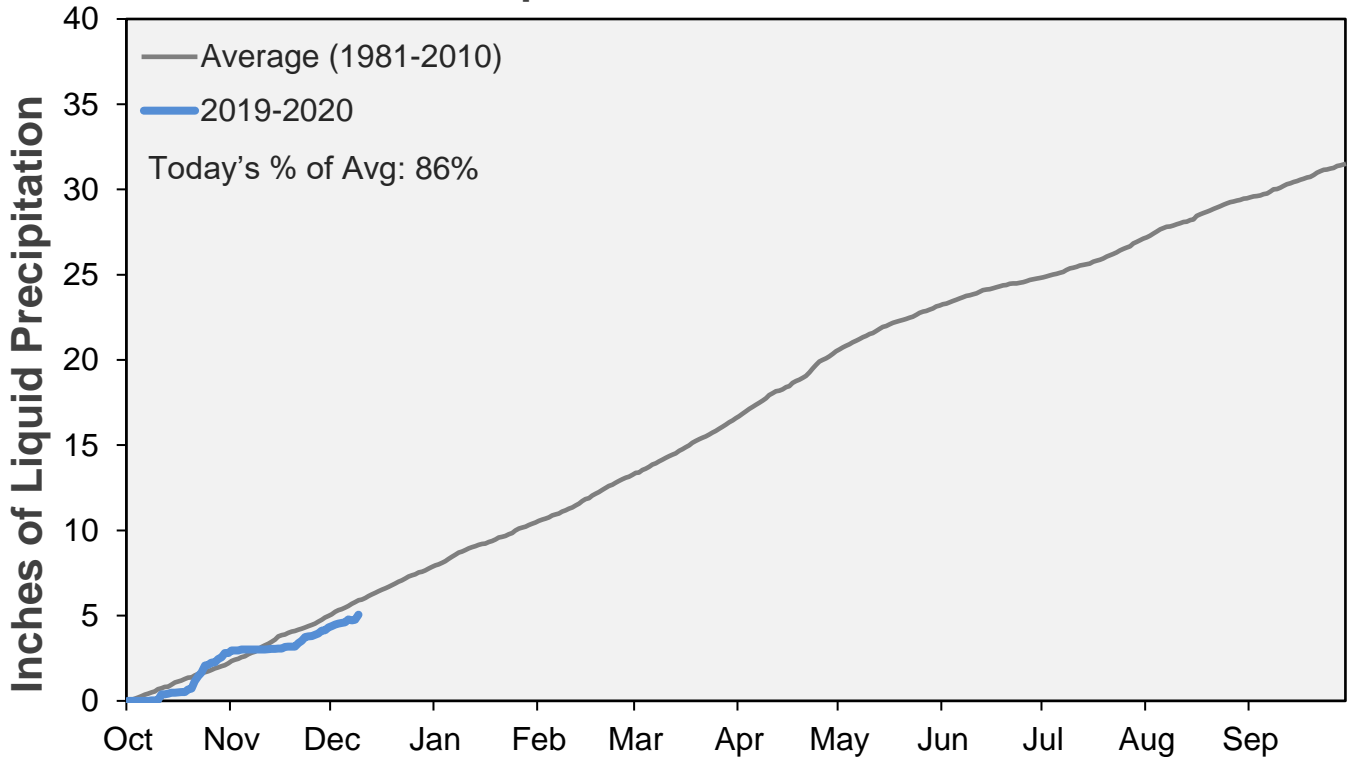


### Cumulative Precipitation: South Platte River Watershed



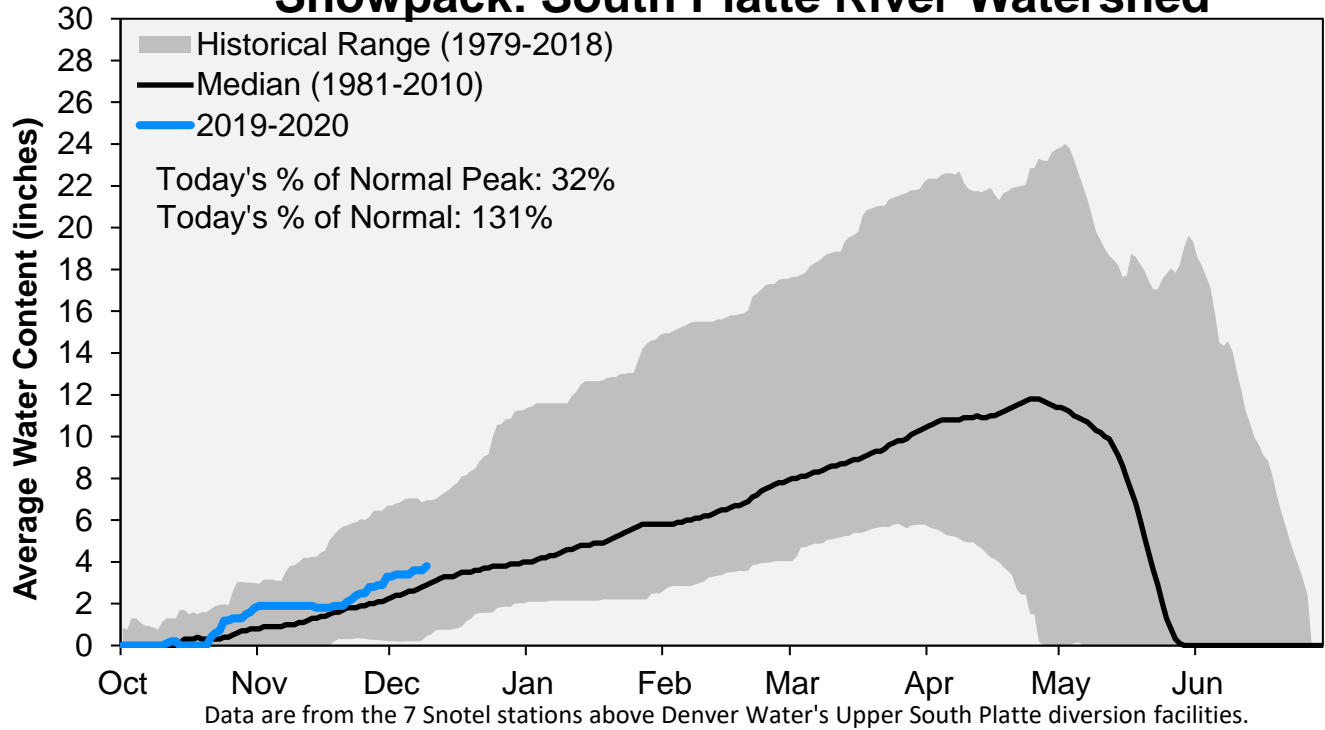
Data are from the 7 SNOTEL stations above Denver Water's Upper South Platte diversion facilities.

### Cumulative Precipitation: Colorado River Watershed

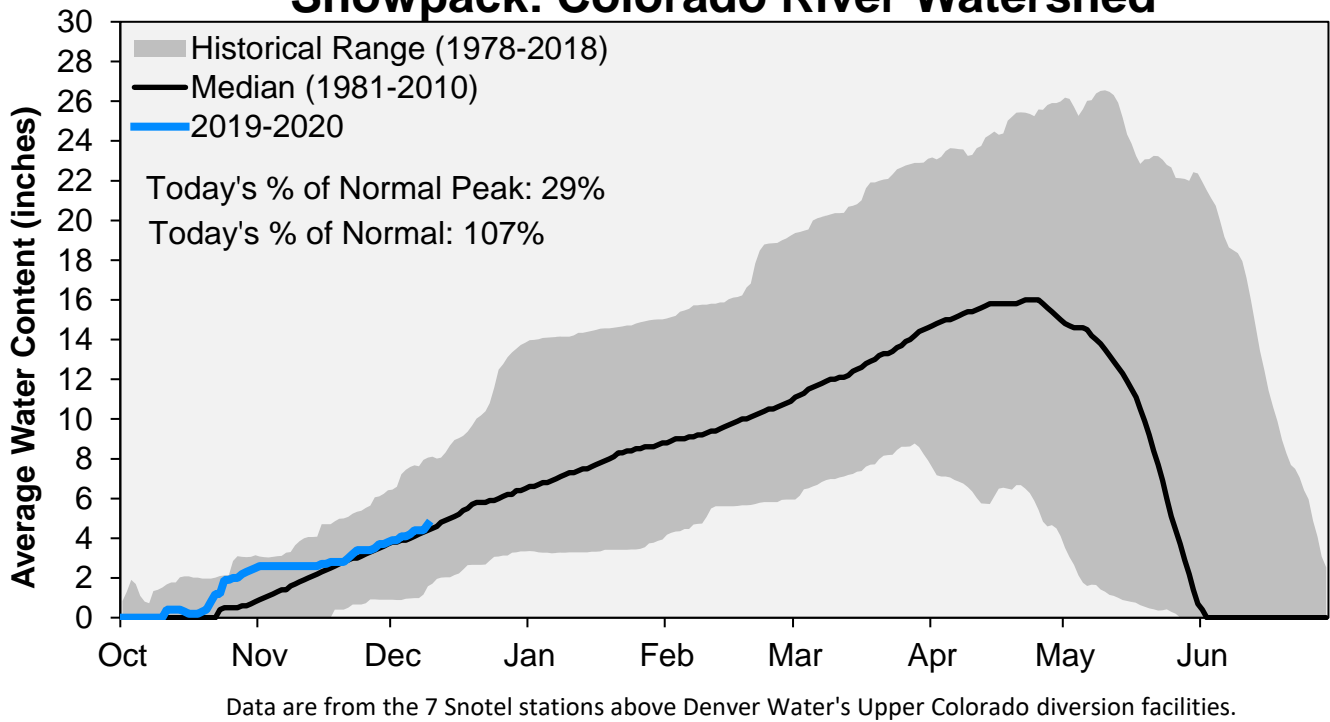


Data are from the 7 SNOTEL stations above Denver Water's Upper Colorado diversion facilities.

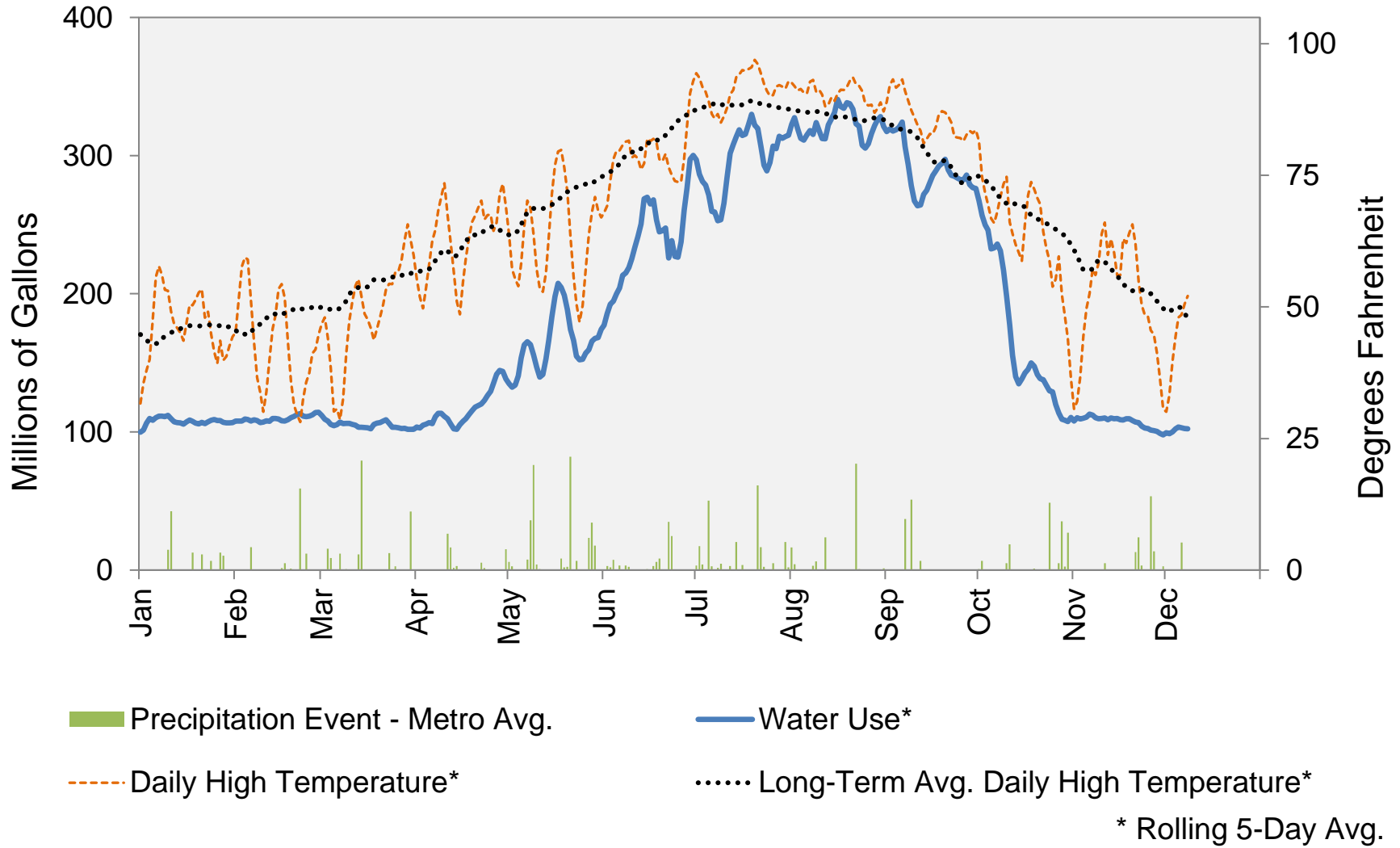
### Snowpack: South Platte River Watershed



### Snowpack: Colorado River Watershed



## 2019 Water Use and Weather Conditions

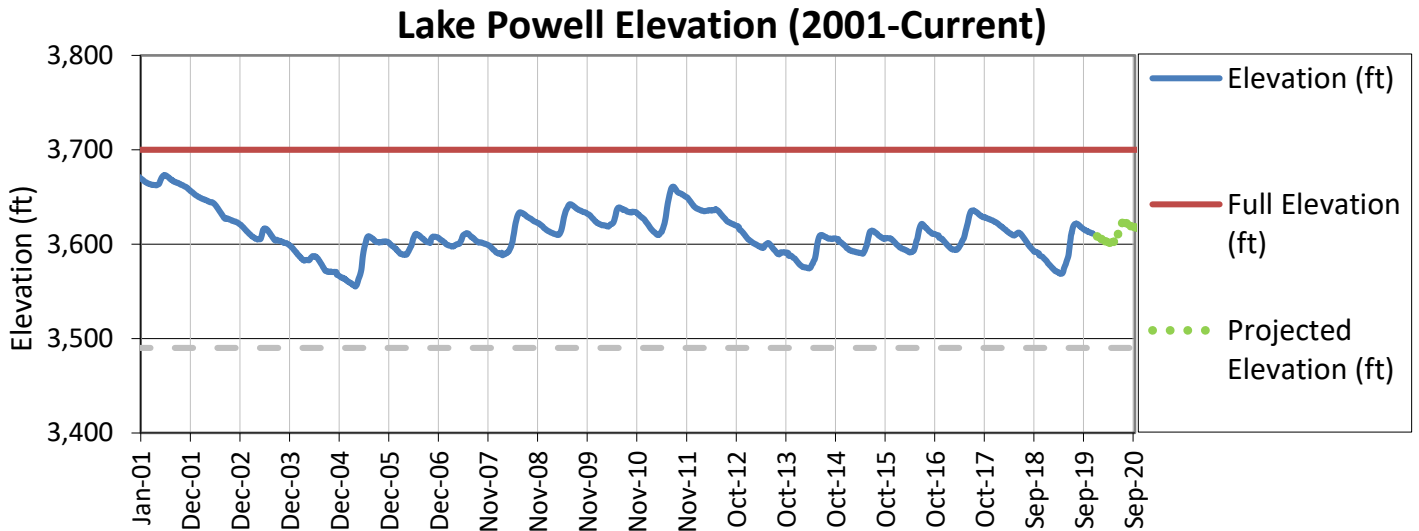
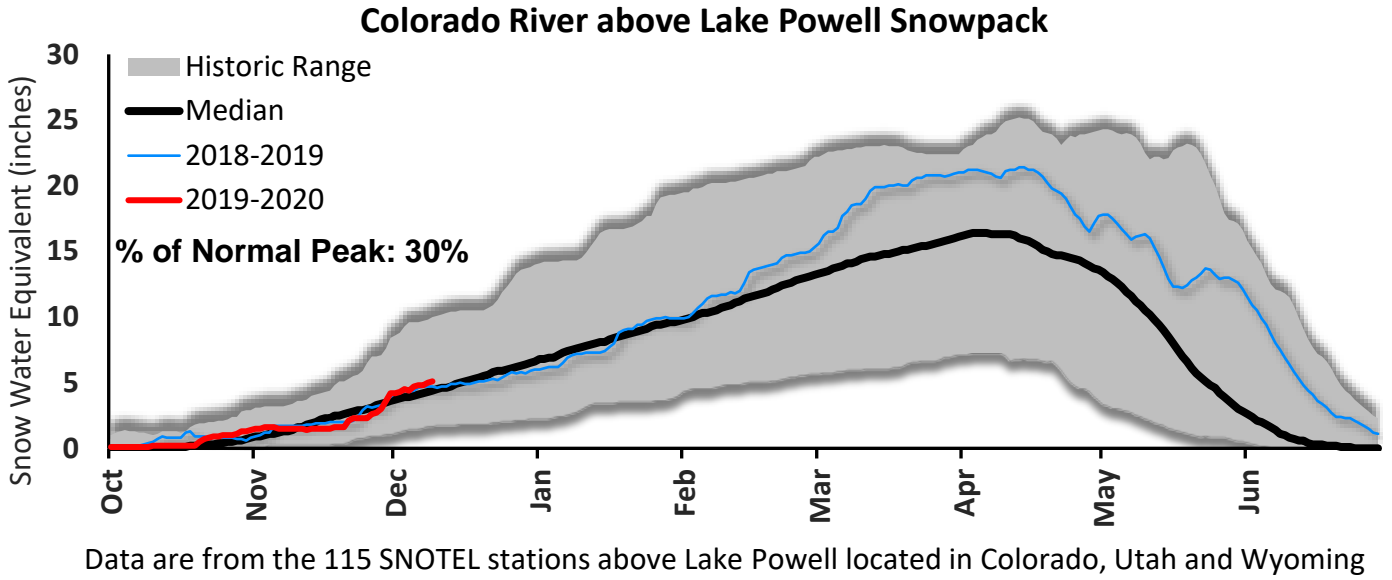


December 9, 2019

Denver Water Use and Reservoir Contents 2019													
	Jan	Feb	Mar	Apr	May	Jun	Jul	Aug	Sep	Oct	Nov	Dec	YTD-Avg
Predicted End-of-Month Supply Reservoir Contents (Full = 518,449 AF)													452,000
Actual End-of-Month Supply Reservoir Contents (AF)	397,696	393,994	392,690	398,810	400,950	511,885	516,445	496,266	473,019	460,009	457,078		
Actual % Full	76%	76%	76%	77%	77%	99%	100%	96%	91%	89%	88%		
Historical Median % Full	80%	80%	79%	77%	88%	98%	95%	92%	88%	85%	84%		
14-'18 Avg. Daily Use (MG)	109	109	107	126	171	270	296	280	246	149	108	105	178
Actual Daily Use (MG)	1	102	111	101	114	132	196	282	305	285	230	98	105
	2	111	105	101	96	137	195	250	331	353	229	123	103
	3	112	106	109	105	149	202	297	292	314	232	110	105
	4	111	114	107	109	169	186	288	286	335	247	114	104
	5	106	108	105	108	180	222	240	341	315	225	108	101
	6	112	106	104	111	179	216	223	324	304	234	110	102
	7	116	110	110	121	149	242	248	348	264	243	119	100
	8	112	103	104	118	138	210	265	278	249	207	101	103
	9	110	107	108	110	132	206	292	328	259	177	110	
D	10	111	109	105	97	136	252	300	311	259	130	109	
A	11	100	111	101	102	143	258	316	297	287	130	111	
Y	12	104	109	107	102	159	281	335	347	268	132	112	
	13	109	113	97	100	195	255	297	329	287	131	108	
O	14	109	107	108	108	200	297	321	350	274	150	107	
F	15	106	108	104	114	221	258	324	333	288	149	110	
	16	108	104	99	114	216	234	296	345	311	152	107	
M	17	110	108	104	112	206	296	340	320	284	146	111	
O	18	105	117	112	115	180	181	331	322	304	154	113	
N	19	102	114	113	122	171	254	358	371	284	137	107	
T	20	103	113	105	127	169	264	285	329	302	120	103	
H	21	113	111	105	120	143	243	283	325	274	136	102	
	22	106	111	108	117	168	188	275	267	264	143	108	
	23	112	108	99	128	123	243	263	314	302	133	100	
	24	109	112	98	139	158	197	339	302	277	118	101	
	25	106	115	106	143	171	261	315	319	296	116	100	
	26	109	116	103	148	166	298	342	341	274	89	97	
	27	106	118	106	151	180	303	267	304	282	112	106	
	28	105	110	100	142	154	323	307	343	266	111	98	
	29	107		95	135	168	301	331	322	266	115	93	
	30	107		105	116	174	276	321	331	293	111	95	
	31	110		103		195		348	305		105		
Monthly Average	108	110	104	118	167	245	299	321	287	156	106	103	183
% of '14-'18 Avg. Daily Use	99%	101%	97%	94%	97%	91%	101%	115%	117%	105%	98%	98%	103%

Notes: 1) "AF" denotes acre-feet. "MG" denotes million gallons. 2) Expected Daily Use is based on historical use with normal weather conditions. 3) The predicted end-of-month supply reservoir contents figures assume normal weather after September 1, 2019. 4) The differences between predicted and actual end-of-month supply reservoir contents are the result of normal estimation error of daily use, supply, evaporation, carriage losses and raw water deliveries. 5) Predicted supply reservoir contents last updated on September 6, 2019. 6) Daily water figures are subject to change.

# Lake Powell Report\*



\* Denver Water gets half of its water supply from the Colorado River and closely monitors conditions at Lake Powell and within the greater Colorado River Basin.