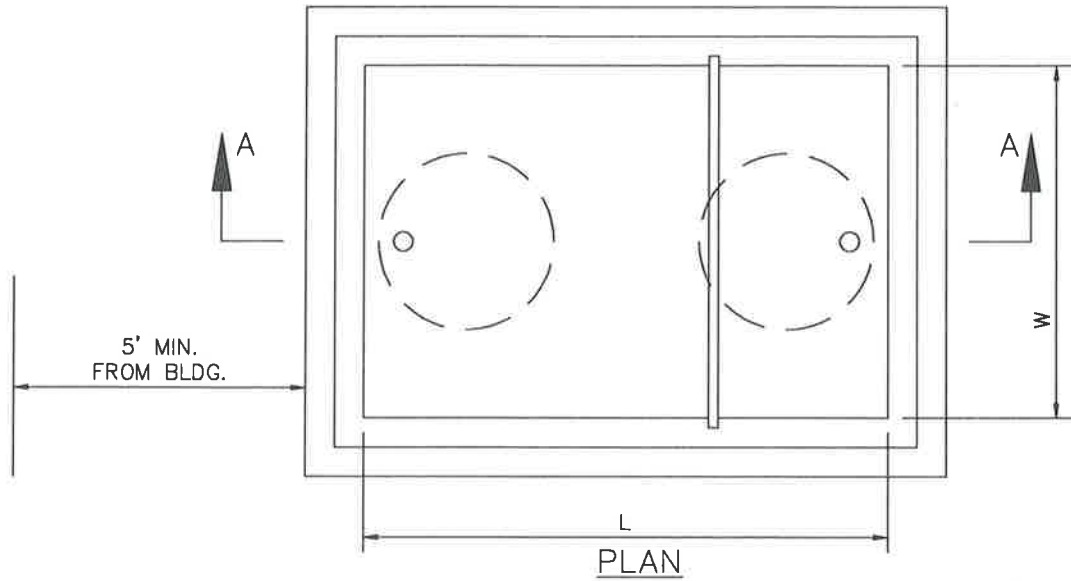
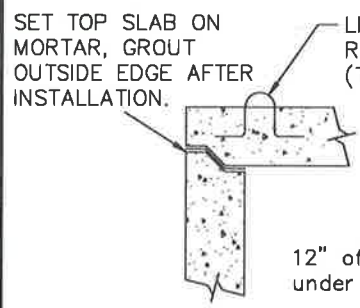
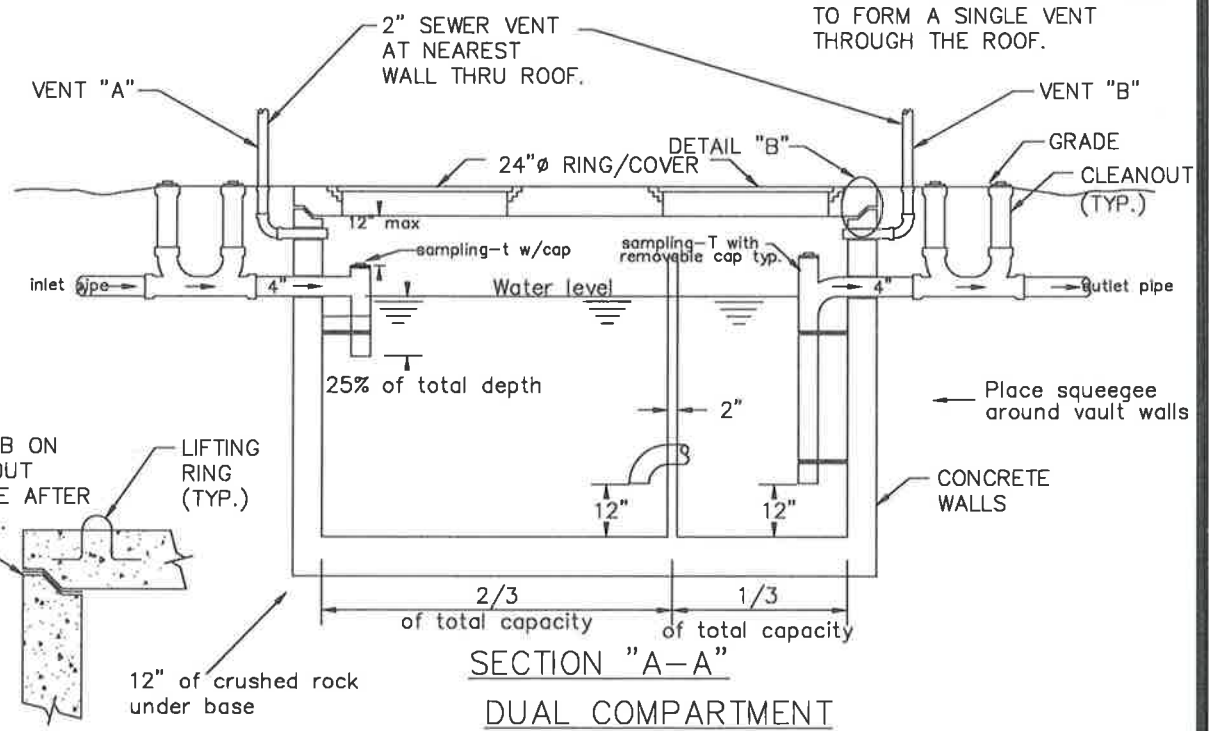


HIGH RATE - DUAL COMPARTMENT



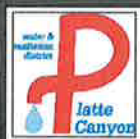
VENT "A" MAY RISE A MINIMUM OF 42" ABOVE FIXTURE FLOOD LINE AND MAY COMBINE WITH VENT "B" ABOVE THE 42" LINE TO FORM A SINGLE VENT THROUGH THE ROOF.



DETAIL B

MINIMUM SIZE OF THE TRAP TO BE 750 GALLONS ON DEVELOPMENTS WHERE THE OCCUPANT IS UNKNOWN

DATE
10/25/2019



PLATTE CANYON
WATER & SANITATION DISTRICT

DRAWING
D.25S

COMMERCIAL GREASE
INTERCEPTOR