



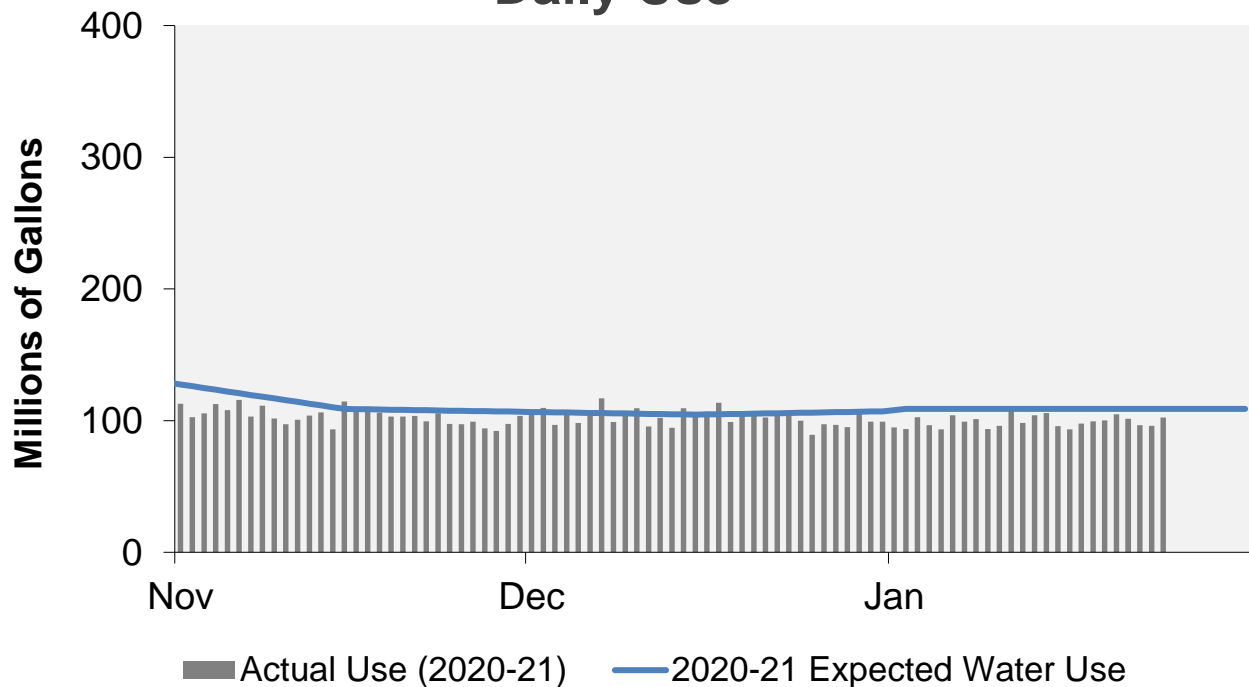
WATER WATCH REPORT

January 25, 2021

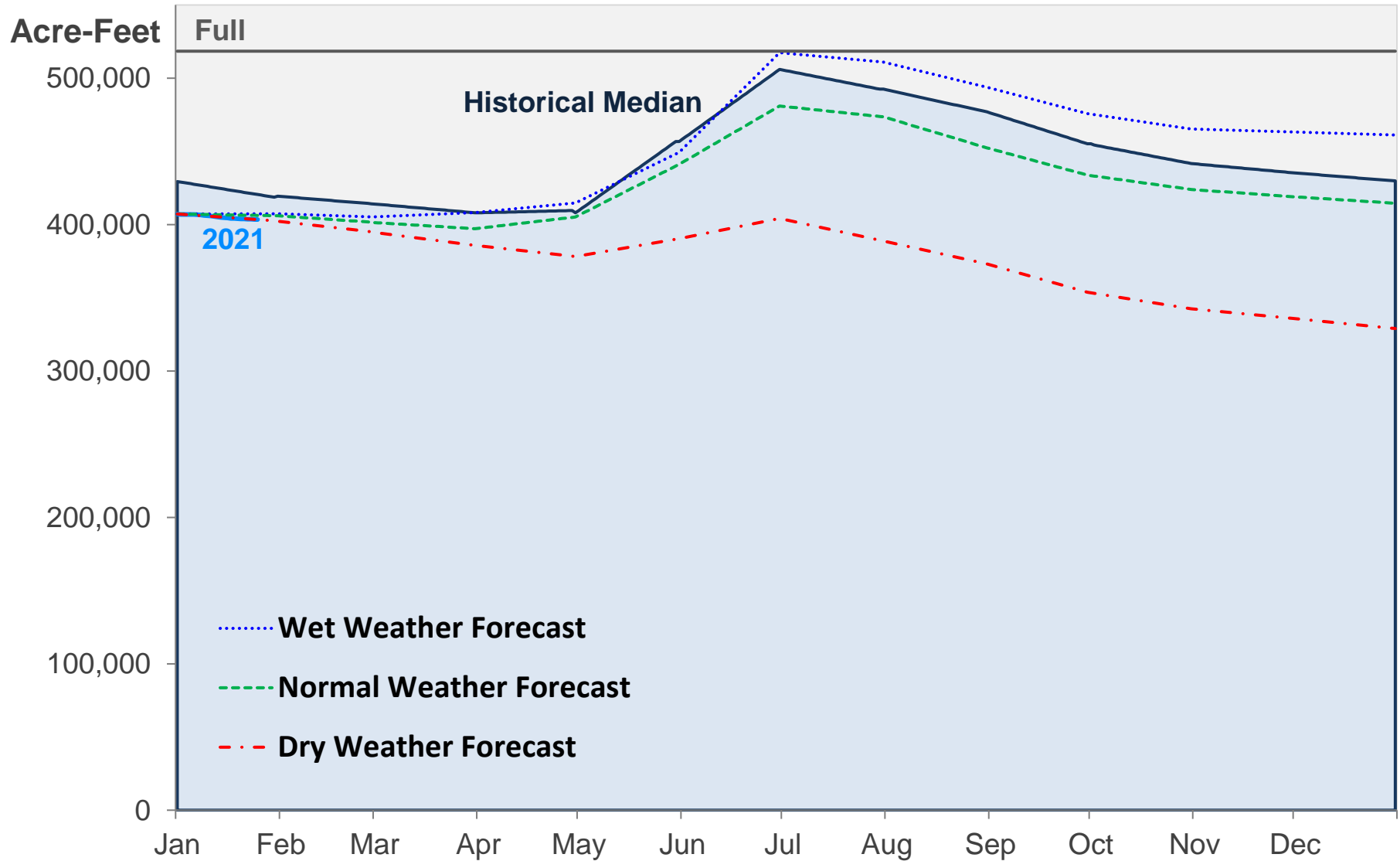
Supply Reservoir Contents

Reservoir	Capacity (acre-feet)		Current Usable Contents (acre-feet)	Percent Full		
	Total	Usable		Current	Last Year	Historical Median
Antero	19,881	19,826	19,305	97%	100%	99%
Eleven Mile	97,779	97,779	96,495	99%	102%	102%
Cheesman	79,064	79,064	40,465	51%	72%	83%
Marston	19,256	13,133	9,218	70%	71%	54%
Strontia Springs	7,863	7,163	5,857	82%	88%	93%
Chatfield	27,076	10,782	7,841	73%	86%	87%
Dillon	257,304	249,095	206,931	83%	90%	91%
Gross	41,811	29,811	11,339	38%	65%	51%
Ralston	10,776	7,276	4,773	66%	38%	62%
Meadow Creek	5,370	4,520	1,233	27%	0%	13%
Total	566,180	518,449	403,457	78%	86%	81%

Daily Use

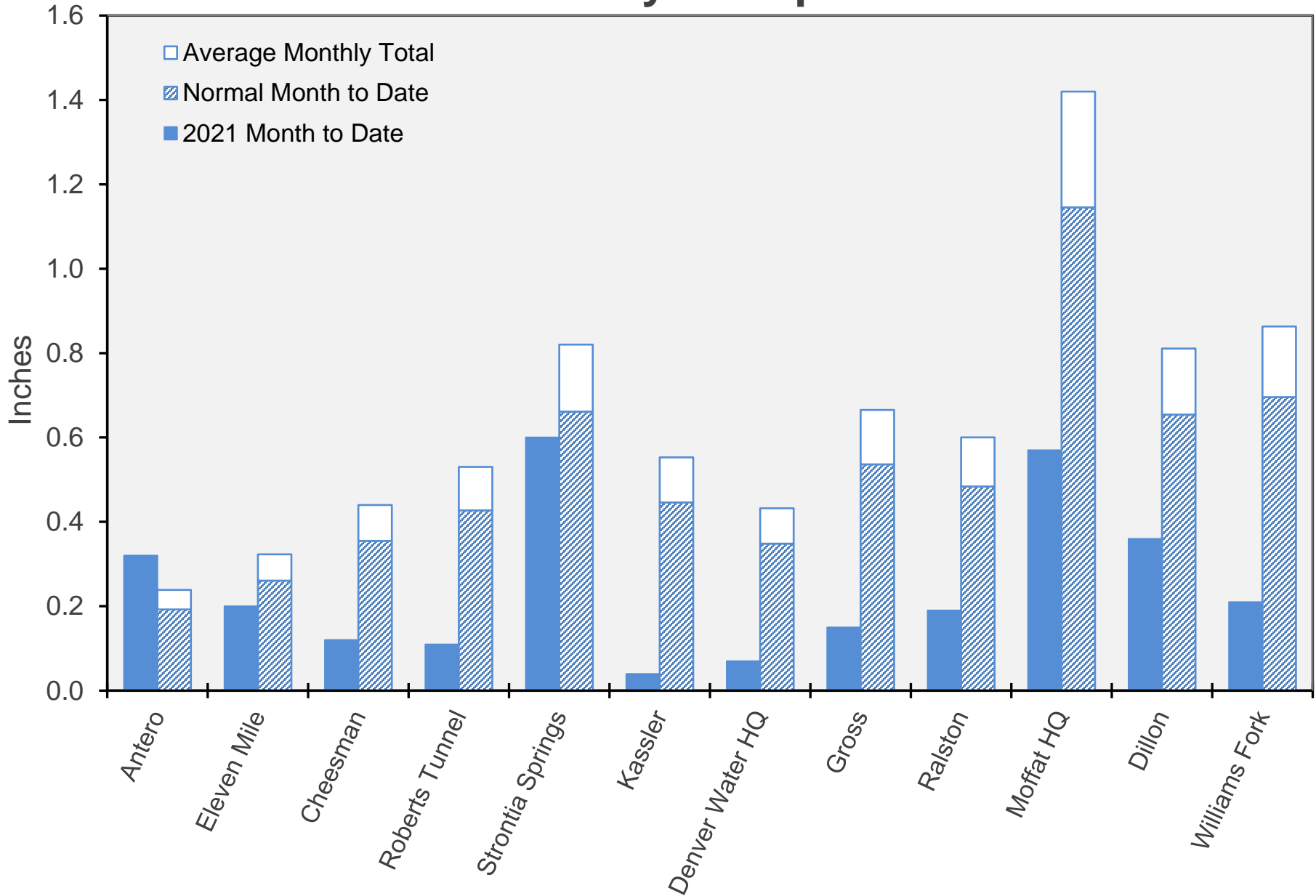


Supply Reservoir Contents

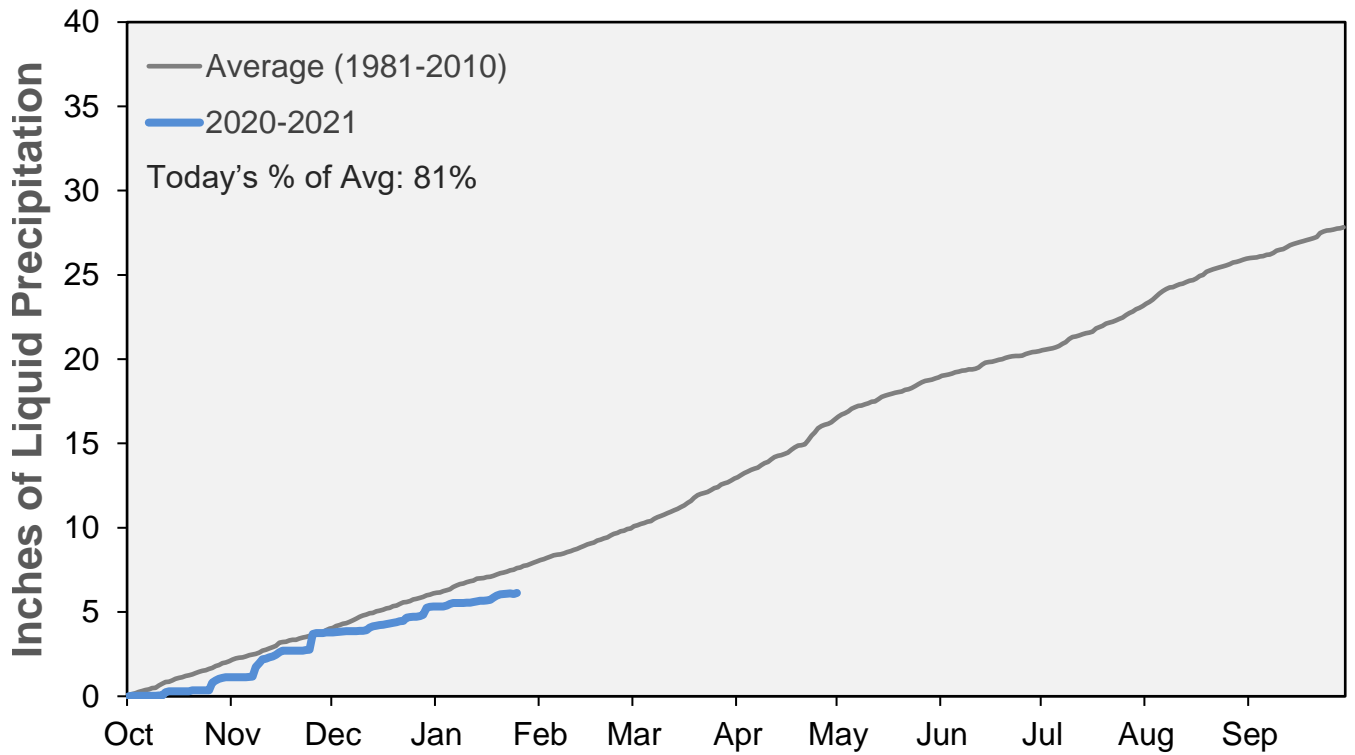


* The dry scenario represents the 90% exceedance level meaning 90% of the forecasted scenarios are above this level. The wet scenario represents the 10% exceedance level meaning 10% of the forecasted scenarios are above this level. The normal or most probable scenario represents the 50% exceedance level where 50% of the forecasts fall above and 50% of the forecasts fall below this level.

January Precipitation

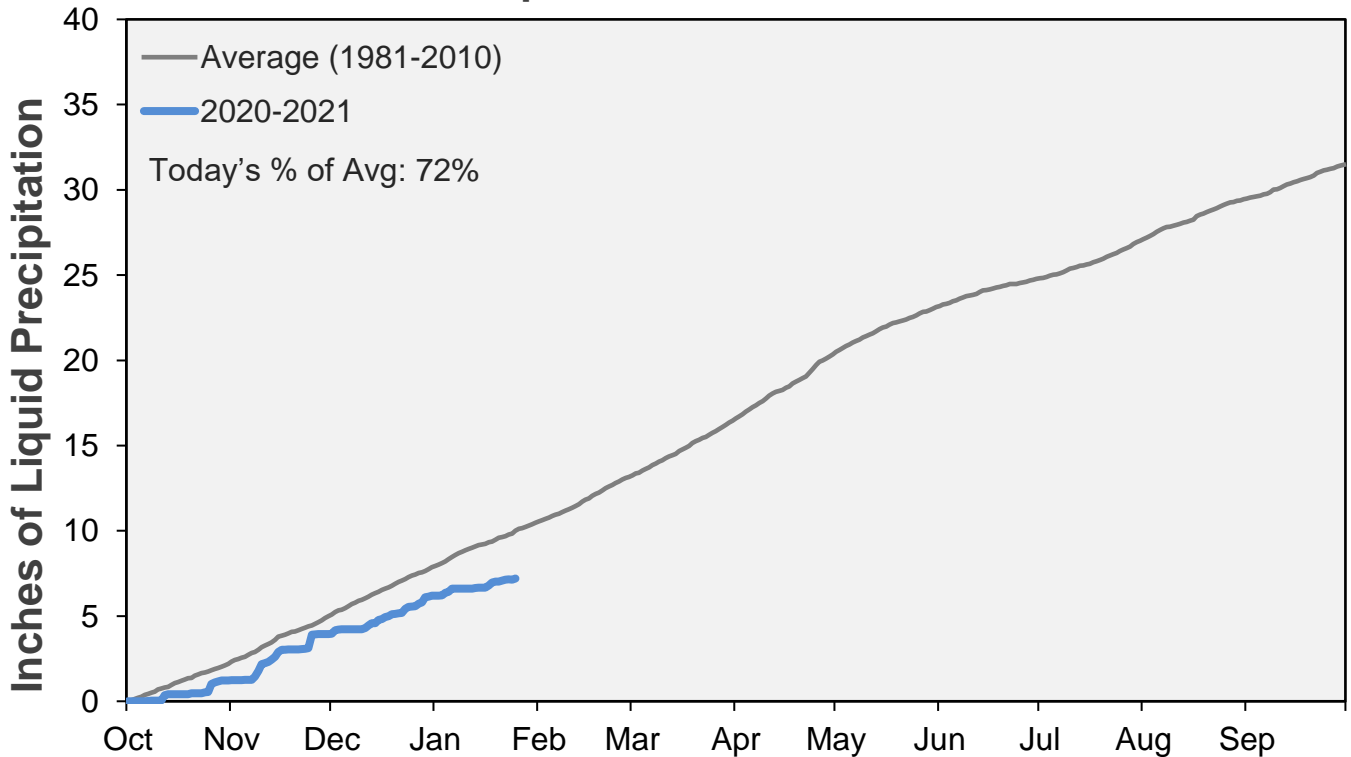


Cumulative Precipitation: South Platte River Watershed



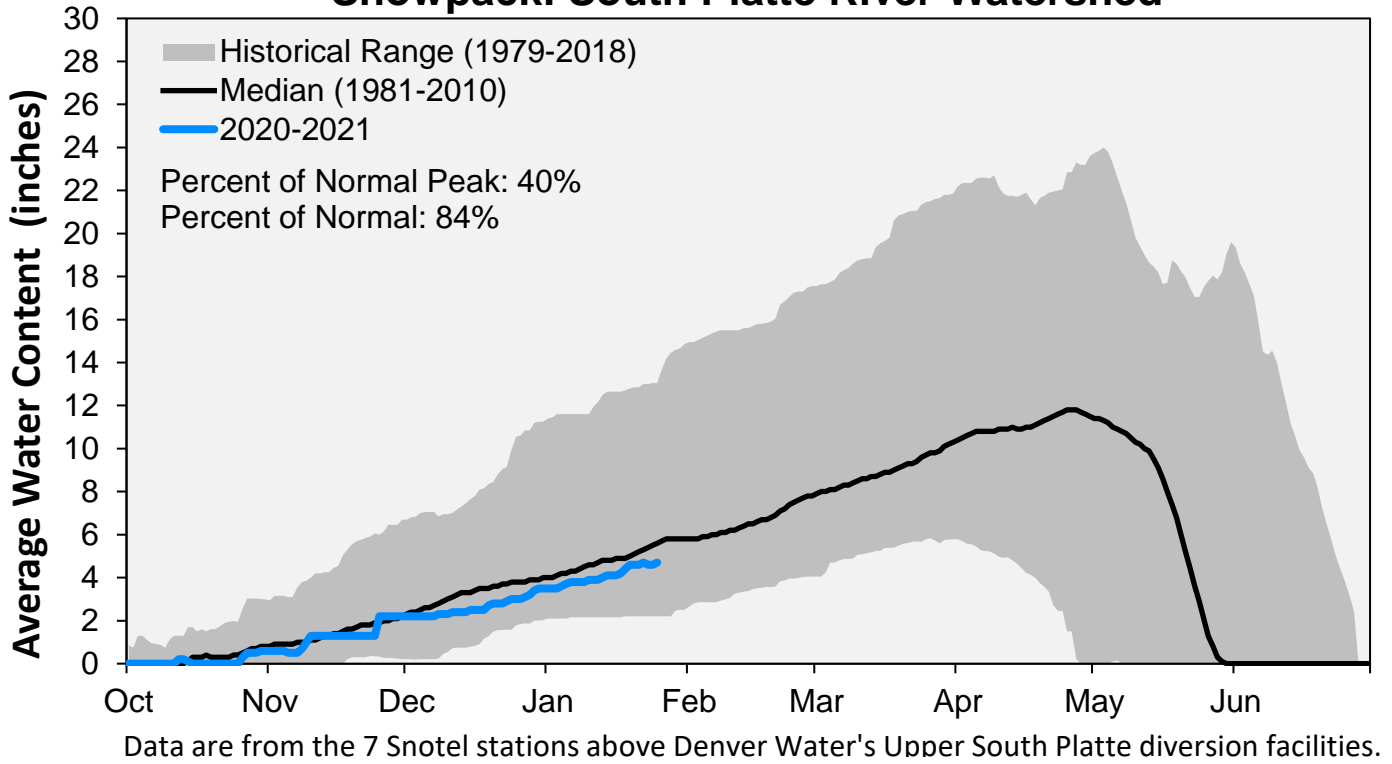
Data are from the 7 SNOTEL stations above Denver Water's Upper South Platte diversion facilities.

Cumulative Precipitation: Colorado River Watershed

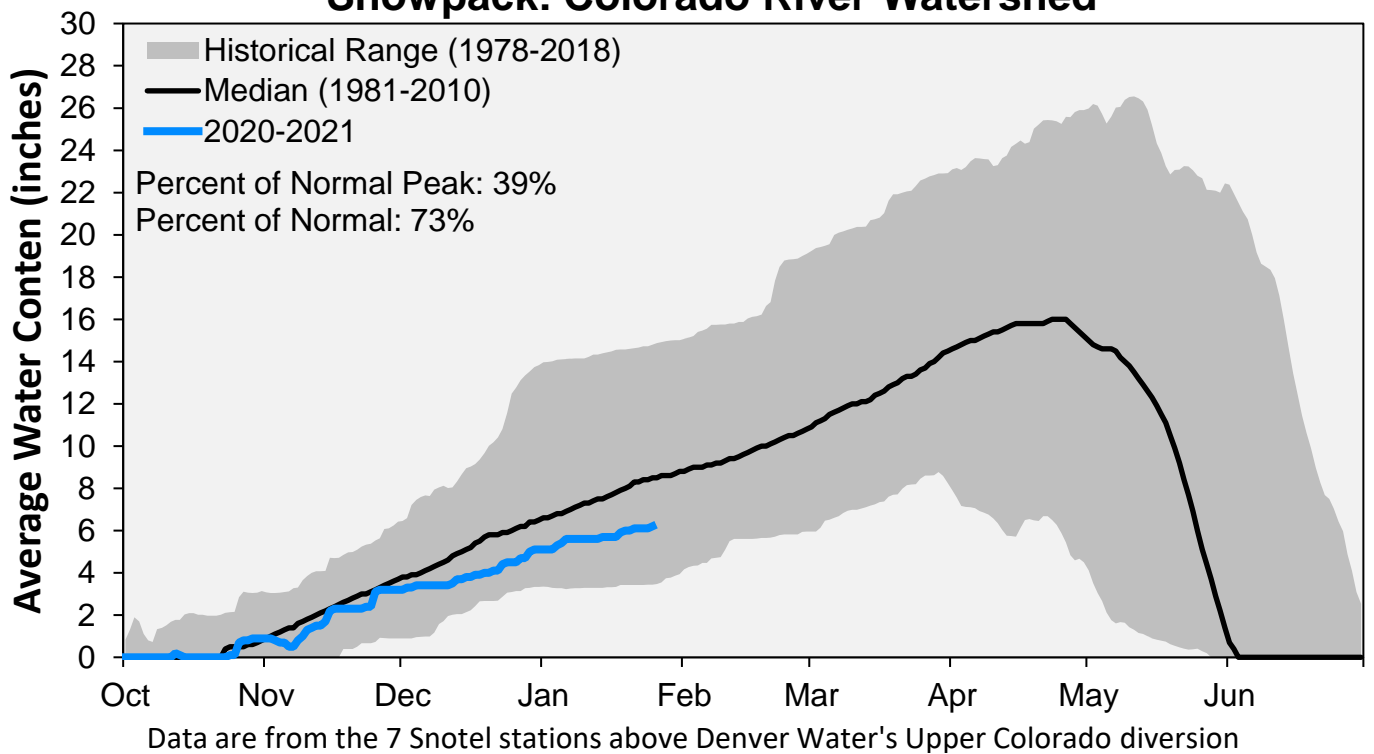


Data are from the 7 SNOTEL stations above Denver Water's Upper Colorado diversion facilities.

Snowpack: South Platte River Watershed



Snowpack: Colorado River Watershed

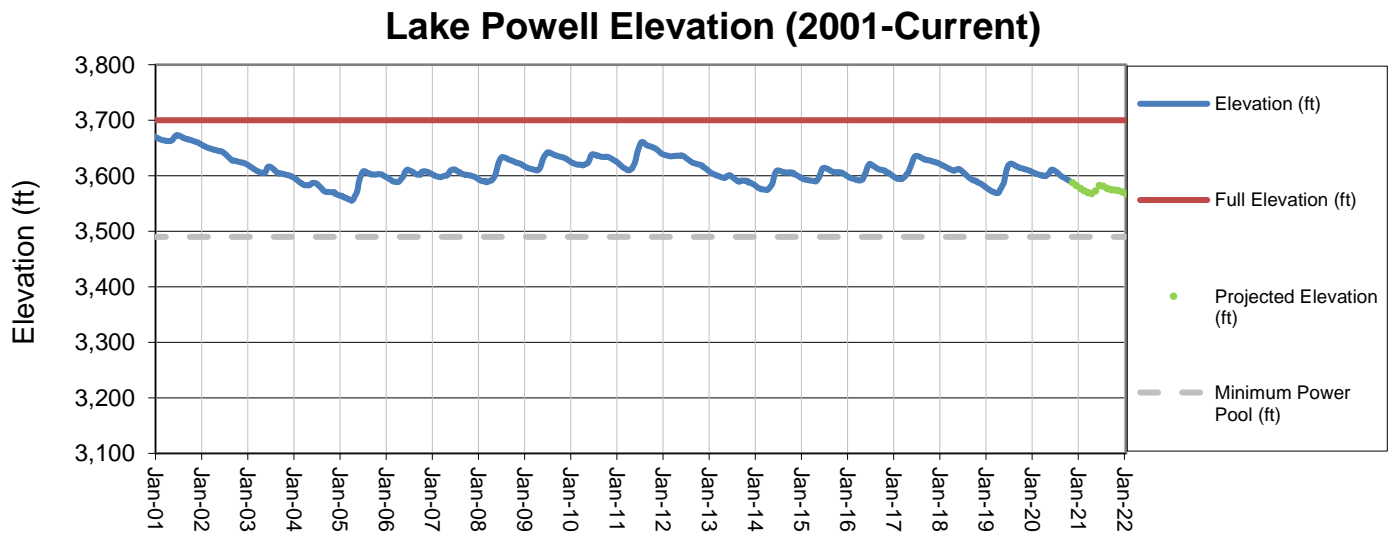
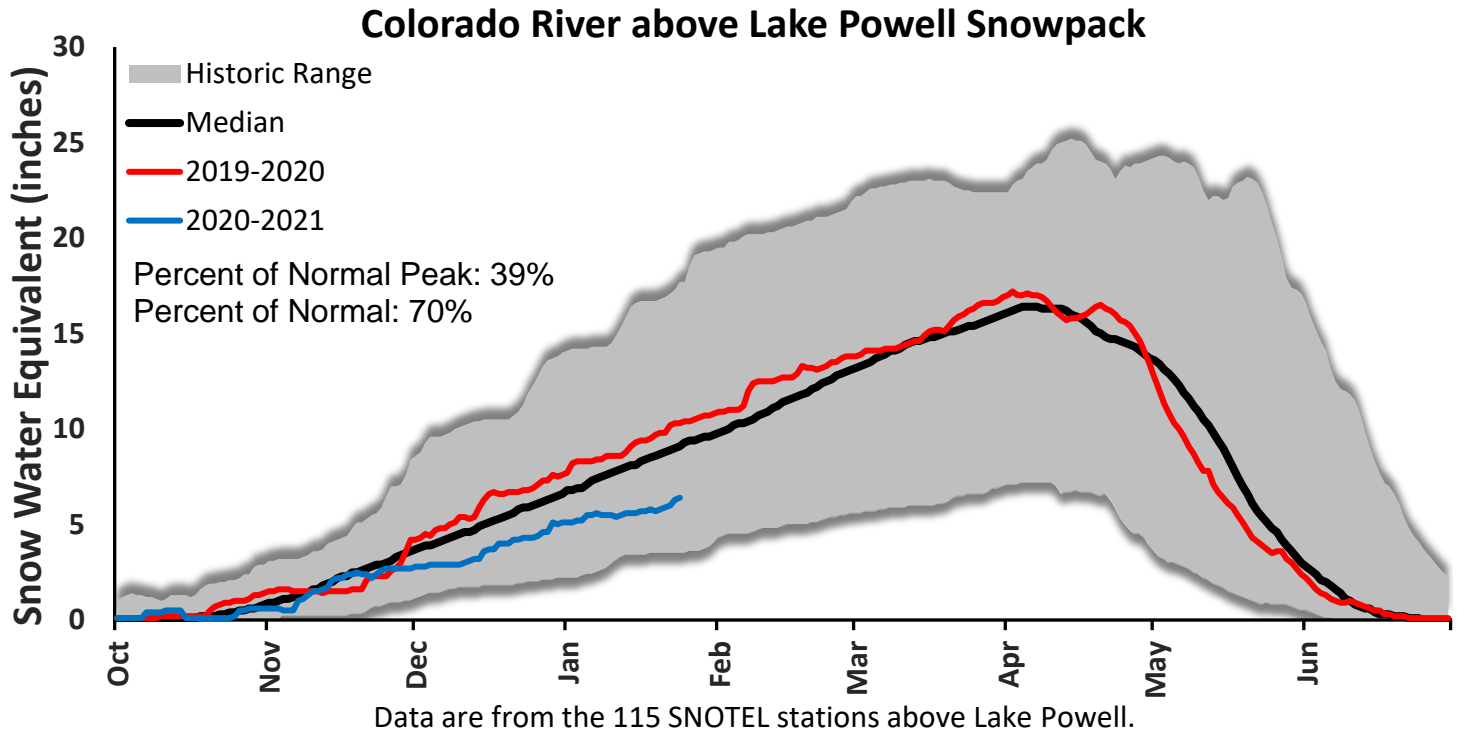


January 25, 2021

Denver Water Use and Reservoir Contents 2021													
	Jan	Feb	Mar	Apr	May	Jun	Jul	Aug	Sep	Oct	Nov	Dec	YTD-Avg
Predicted End-of-Month Supply Reservoir Contents (Full = 518,449 AF)	404,800												
Actual End-of-Month Supply Reservoir Contents (AF)													
Actual % Full													
Historical Median % Full													
2021 Expected Daily Use (MG)	109	109	107	124	161	263	305	298	276	163	110	105	109
Actual Daily Use (MG)	1	95											
	2	94											
	3	103											
	4	97											
	5	93											
	6	104											
	7	99											
	8	101											
	9	94											
	D 10	96											
	A 11	109											
	Y 12	98											
	13	104											
	O 14	106											
	F 15	96											
	16	93											
	M 17	98											
	O 18	100											
	N 19	100											
	T 20	105											
	H 21	101											
	22	97											
	23	96											
	24	102											
	25												
	26												
	27												
	28												
	29												
	30												
	31												
Monthly Average	99												99
% of 2020 Expected Daily Use	91%												91%

Notes: 1) "AF" denotes acre-feet. "MG" denotes million gallons. 2) Expected Daily Use is based on historical use with normal weather conditions. 3) The predicted end-of-month supply reservoir contents figures assume normal weather after January 1, 2021. 4) The differences between predicted and actual end-of-month supply reservoir contents are the result of normal estimation error of daily use, supply, evaporation, carriage losses and raw water deliveries. 5) Predicted supply reservoir contents last updated on January 11th, 2021. 6) Daily water figures are subject to change.

Lake Powell Report*



* Denver Water gets half of its water supply from the Colorado River and closely monitors conditions at Lake Powell and within the greater Colorado River Basin.