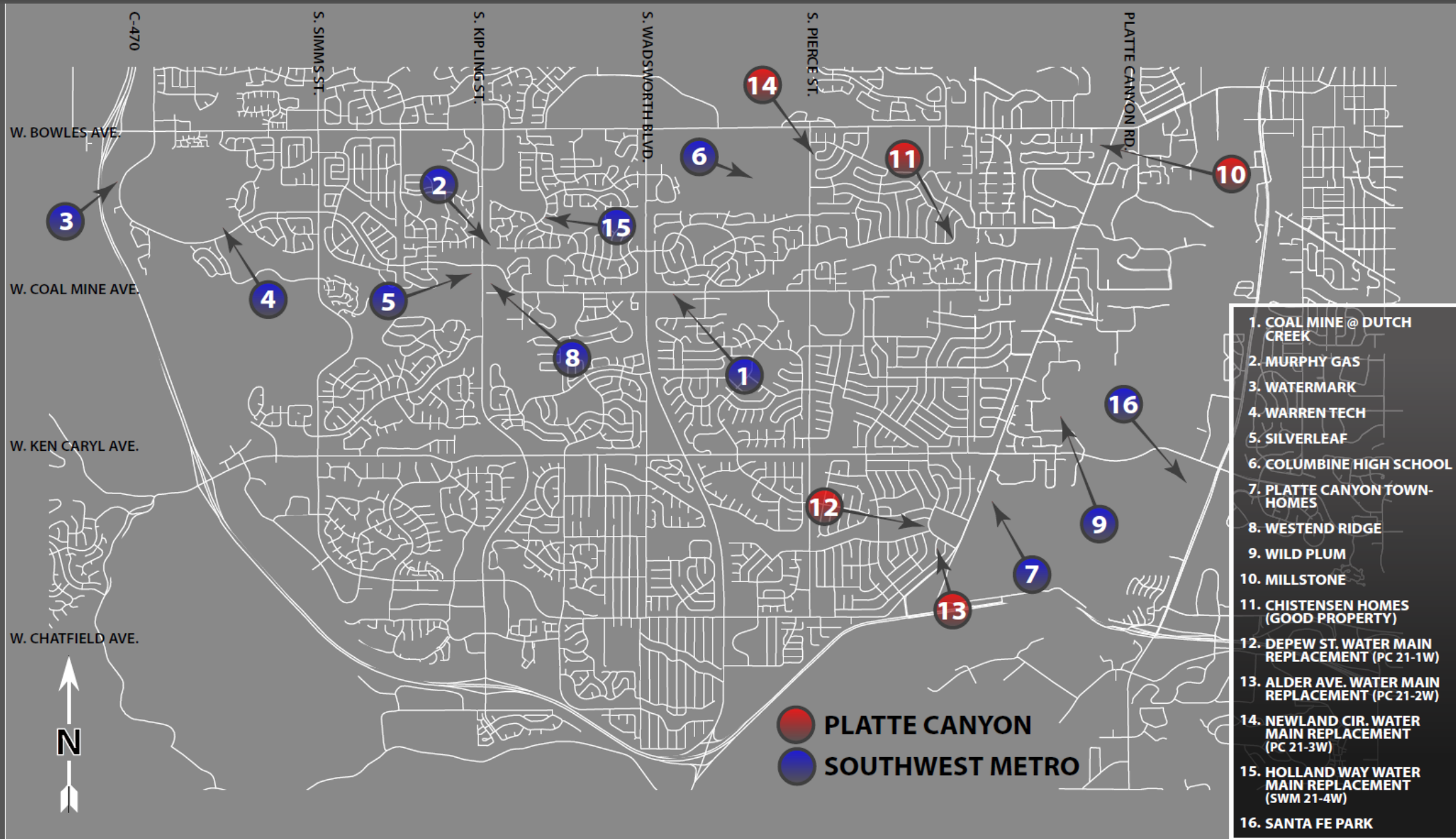


# PLAN REVIEW AND CONSTRUCTION STATUS REPORT – June - 2021



SUMMARY of projects in design or under construction



# Overall Project Map





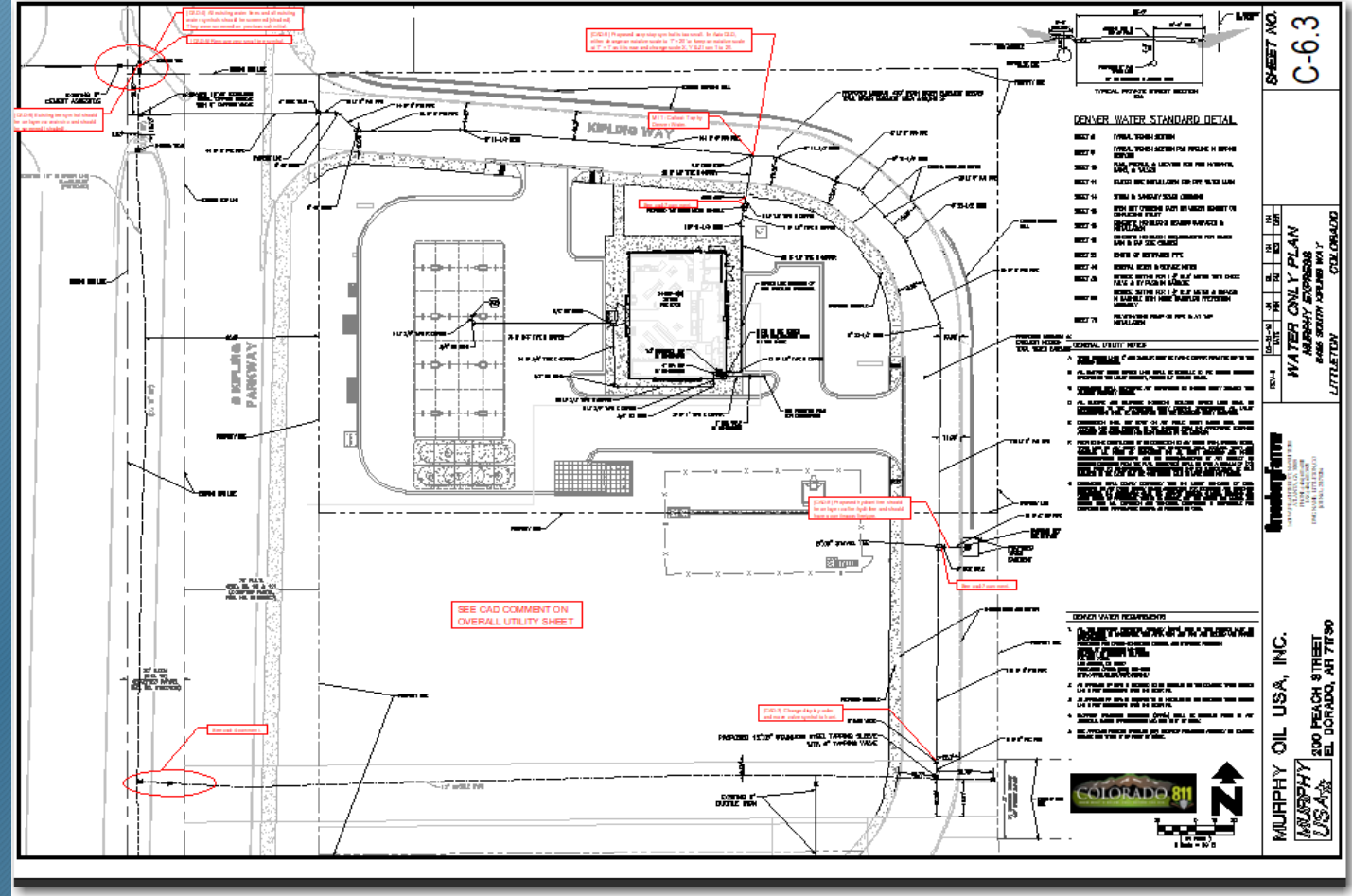
*NEW DEVELOPMENT PROJECTS IN DESIGN/PLAN REVIEW:*



- PROJECT NAME: Murphy Express – Gas Station
- LOCATION: S. Kipling St., 500' South of W. Coal Mine Ave.
- STATUS: In Plan Review at DW – Easement Acquisition complete – Application and Agreement Complete
- SCOPE: 732' of 8" PVC Pipe



PROJECT LOCATION



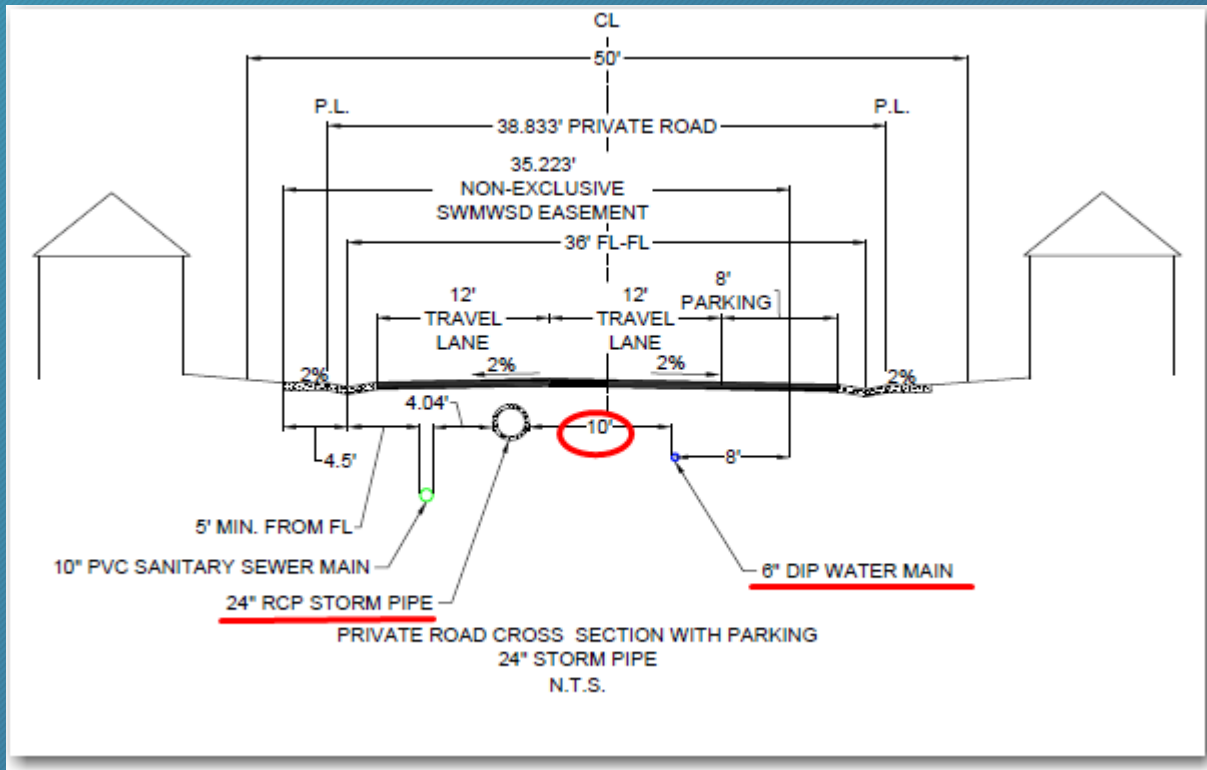
PROJECT PLAN



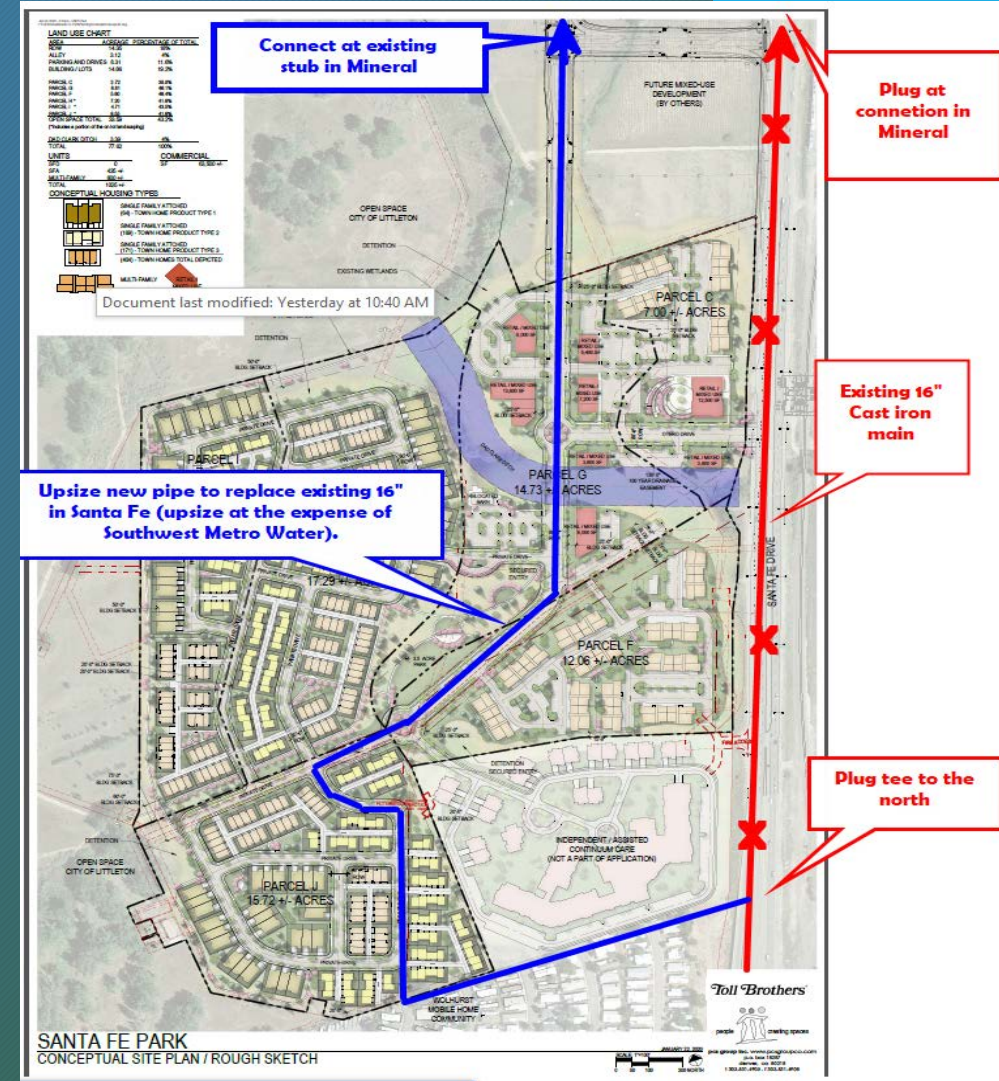
*CONCEPTUAL PROJECTS; RECENT ACTIVITY:*



- PROJECT NAME: Santa Fe Park South
- LOCATION: 3000' South of Mineral Ave; West Side of Santa Fe (adjacent to Wolhurst)
- STATUS: Working on Metro District creation with Littleton and Toll Brothers
- Water- In Design - Worked with DW and Engineer on required 10' separation issue
- Sewer - In Design
- SCOPE: Multi Family (336 units) and Townhome (403) Development -
- ANTICIPATED TAP REVENUE (South): sewer - \$989,658.00 & water (size TBD) - \$2,140,200.00



Typical Street Cross Section - 35' Easement



PROPOSED PIPE ROUTE





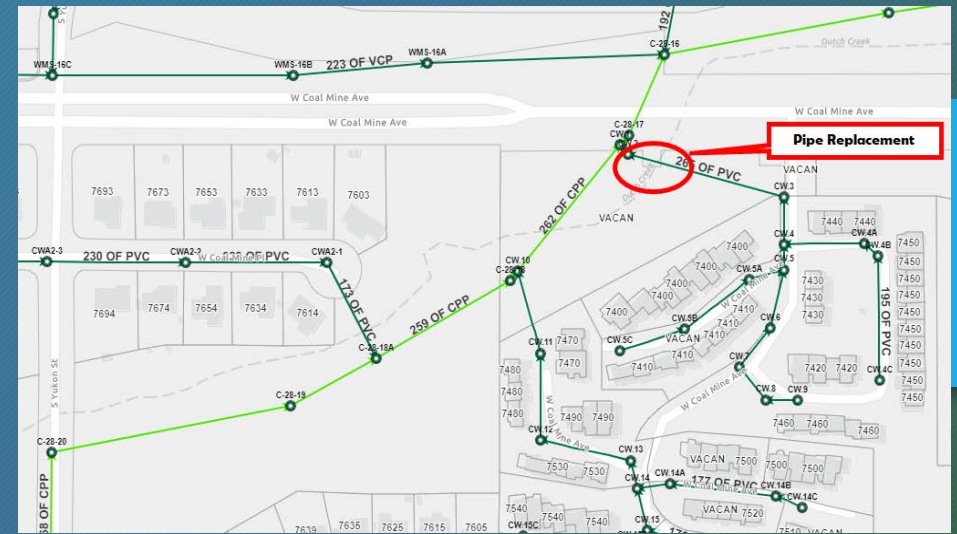
*THE FOLLOWING ARE DEVELOPMENT PROJECTS IN  
VARIOUS STAGES OF CONSTRUCTION*



- **PROJECT NAME:** Dutch Creek Crossing Coal Mine – Drainage Improvement
- **LOCATION:** Coal Mine East of S. Yukon St
- **STATUS:** In construction; Start on north side of Coal Mine, sewer main work in July
- **SCOPE:** Encase 8" Sewer Pipe Under Dutch Creek



8" Sewer Main with Insulation and Skids



Project Location



Prairie Dog Puppy Safe Zone - Pink Tape



Casing Skid - Supports Pipe in Casing Pipe



- PROJECT NAME: Columbine High School
- LOCATION: Pierce and Bowles
- STATUS – Water Line in Construction – Testing Complete
- SCOPE: 2878' of 8' and 12" Water Main Extension.



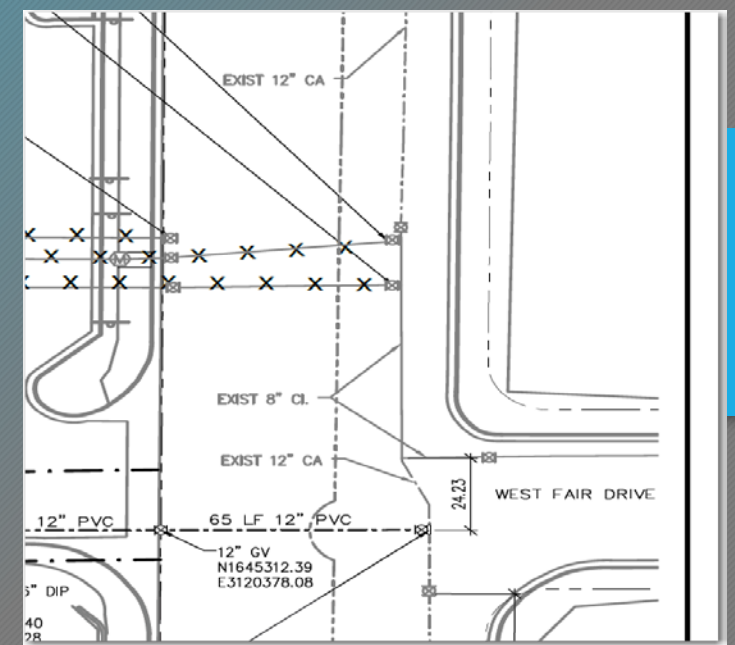
New Domestic Service into Vault



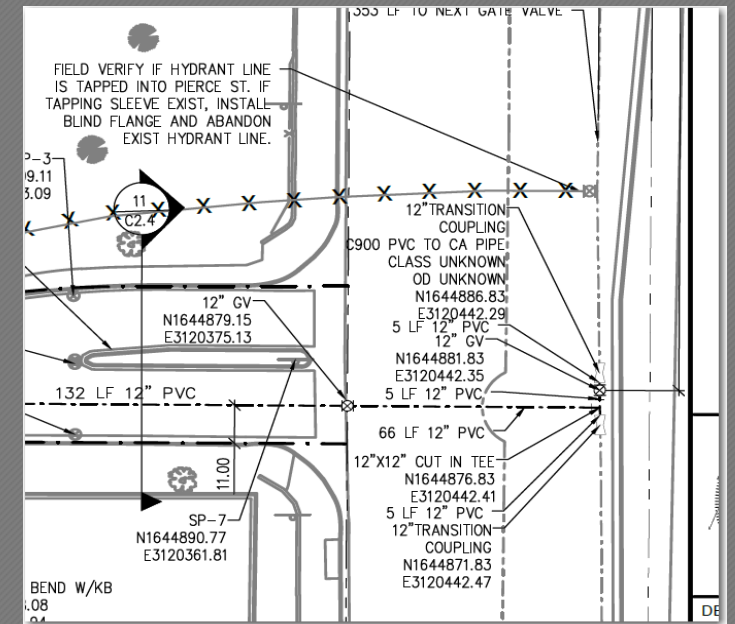
Lowering on New Main for Storm Pipe



Irrigation Service Through Vault



Cut Off North Entrance



Cut Off South Entrance

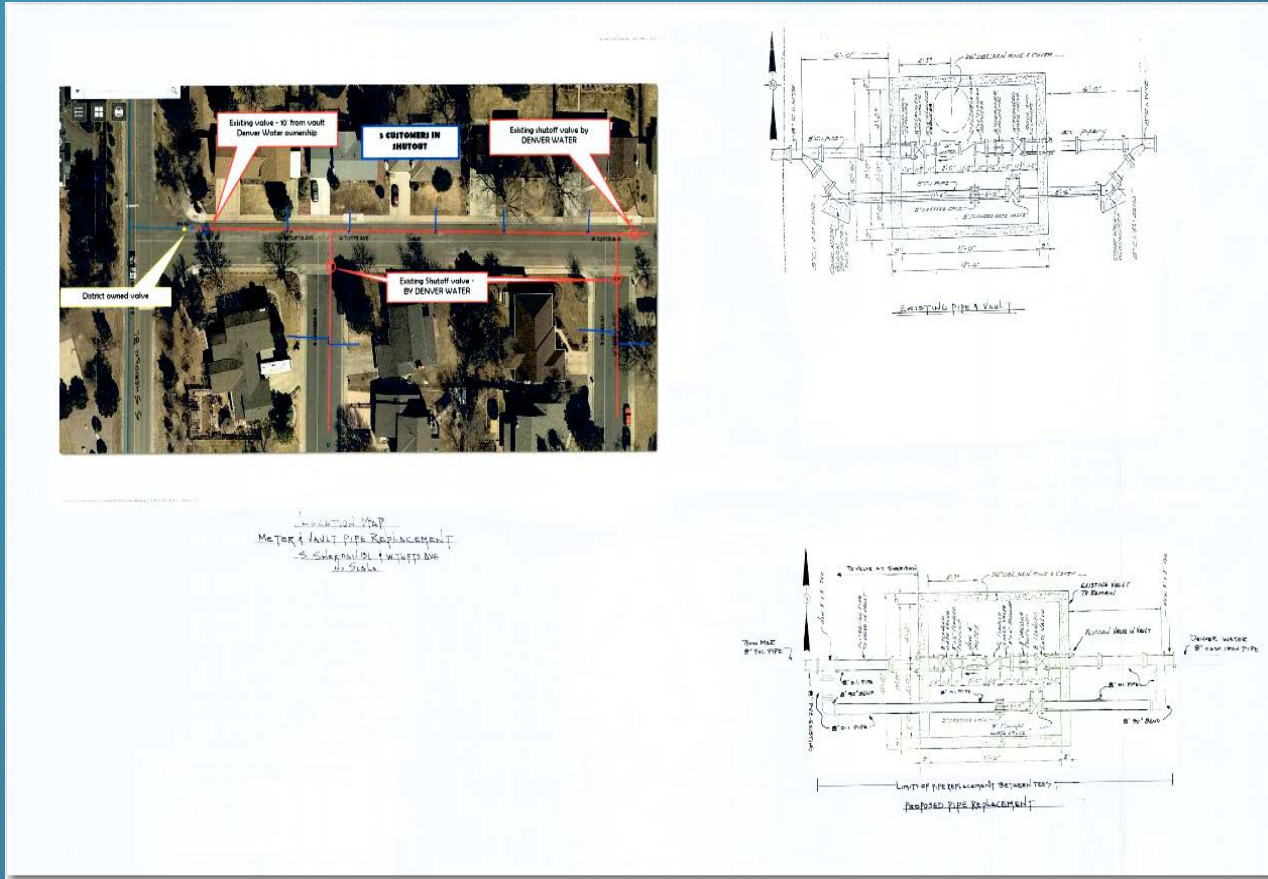




**THE FOLLOWING ARE 2021 CAPITAL PROJECTS IN DESIGN**



- PROJECT NAME: Bow Mar Meter and Pipe Replacement
- LOCATION: Tufts Ave and S. Sheridan Blvd
- STATUS: Request for Design Cost from RG & Associates
- SCOPE: Replace pipe, valves and meter through existing vault



Conceptual Plan



Plan Layout - Looking West



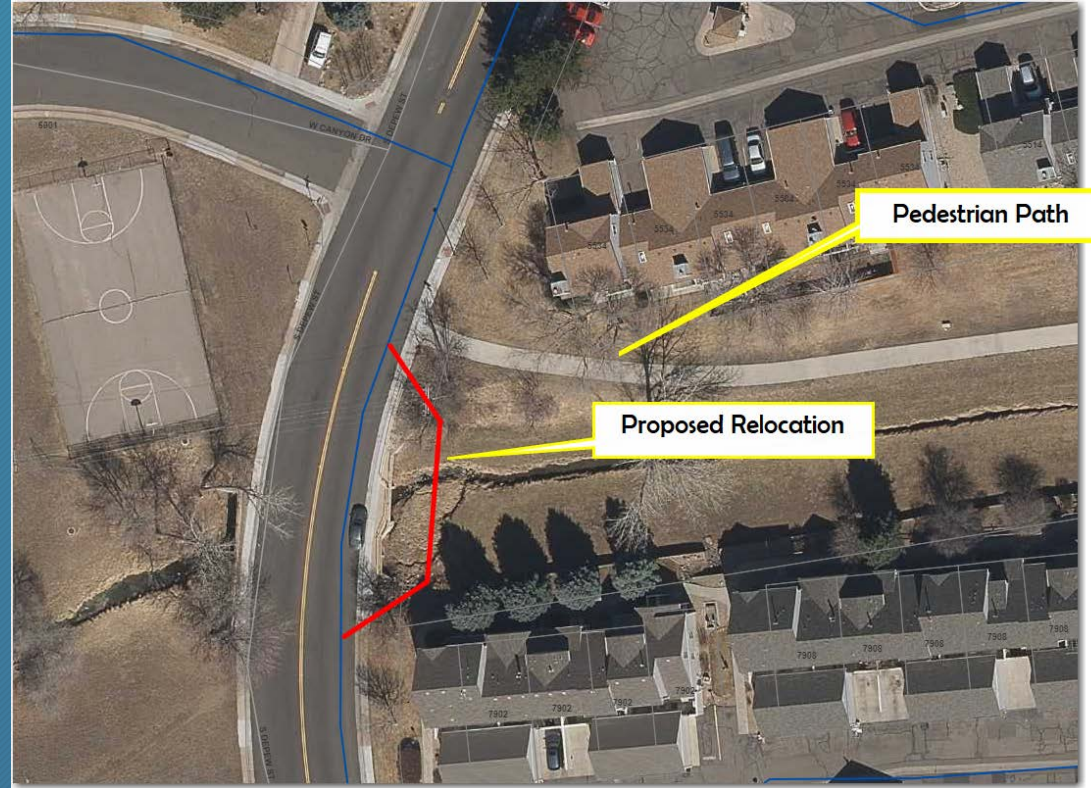
**THE FOLLOWING ARE 2021 CAPITAL PROJECTS IN CONSTRUCTION**



- PROJECT NAME: S Depew St & Canyon (Including Massey Draw Culvert Crossing) – 21-3W
- STATUS: In Construction
- SCOPE: 1900' of 8" PVC – 21-3W
- Customer notifications – Website, Nextdoor, Facebook, door to door- regarding traffic and service disruption. Additional notification to Millbrook Townhomes - traffic impact notification – Construction Notification with signs along path



Construction in Depew



Impact to Pedestrian Path

# CONSTRUCTION AHEAD

FOR MORE INFORMATION PLEASE VISIT:  
[www.plattecanyon.org/construction-corner](http://www.plattecanyon.org/construction-corner)  
or call **303-979-2333**



Notification Signage



- CAPITAL PROJECTS CONSTRUCTION **STATUS/SCHEDULE** – Meeting planned with Foothills and Mile High Flood Control to discuss path detour and construction in creek flow

- PC PROJECTS:

  - Newland Cir – Complete*

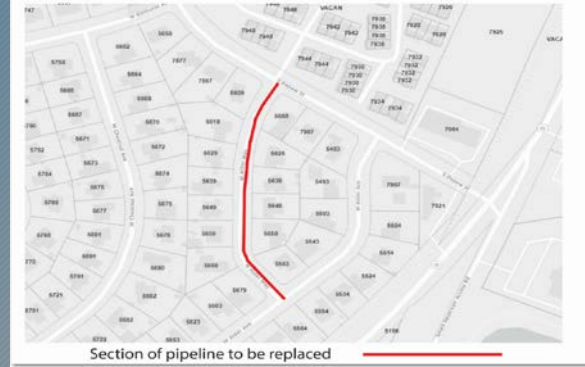
Water Main Replacement on S. Newland Circle





  - Alder Way – Complete*

Water Main Replacement on W. Alder Way



S Depew St between Platte Canyon Rd and W. Canyon Trail. – 1900' of 8" PVC (CIP 21-IW) **In Construction**

  - *Contract amount \$1,095,832*

- SWM PROJECTS:

  - A. S Holland Wy between W. Arbor Pl and S Garland Ct (CIP 20-IW) 300' of 12" PVC – **Start July 1**

  - *Contract amount \$160,168*



QUESTIONS?