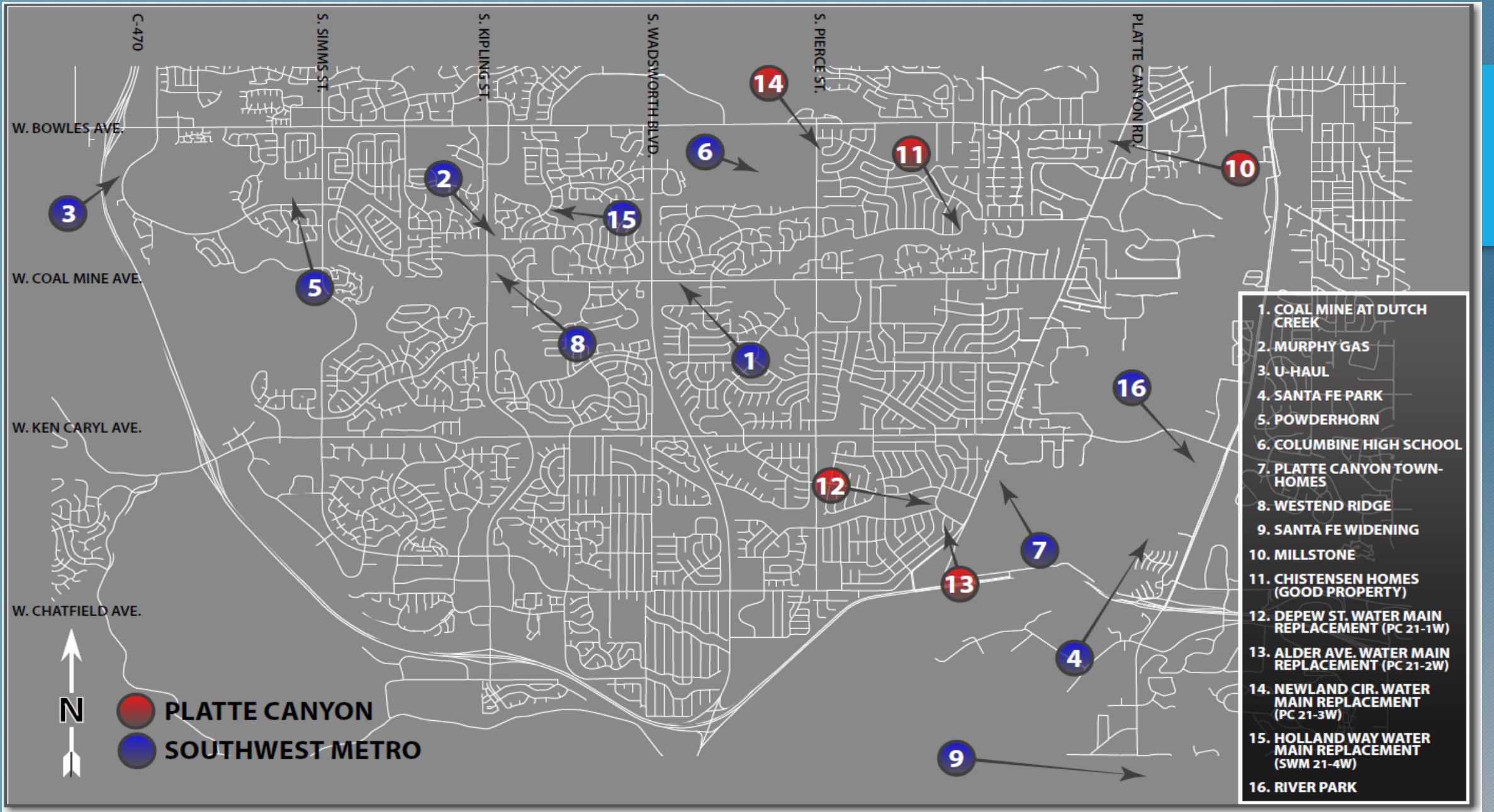


PLAN REVIEW AND CONSTRUCTION STATUS REPORT – July - 2021



SUMMARY of projects in design or under construction



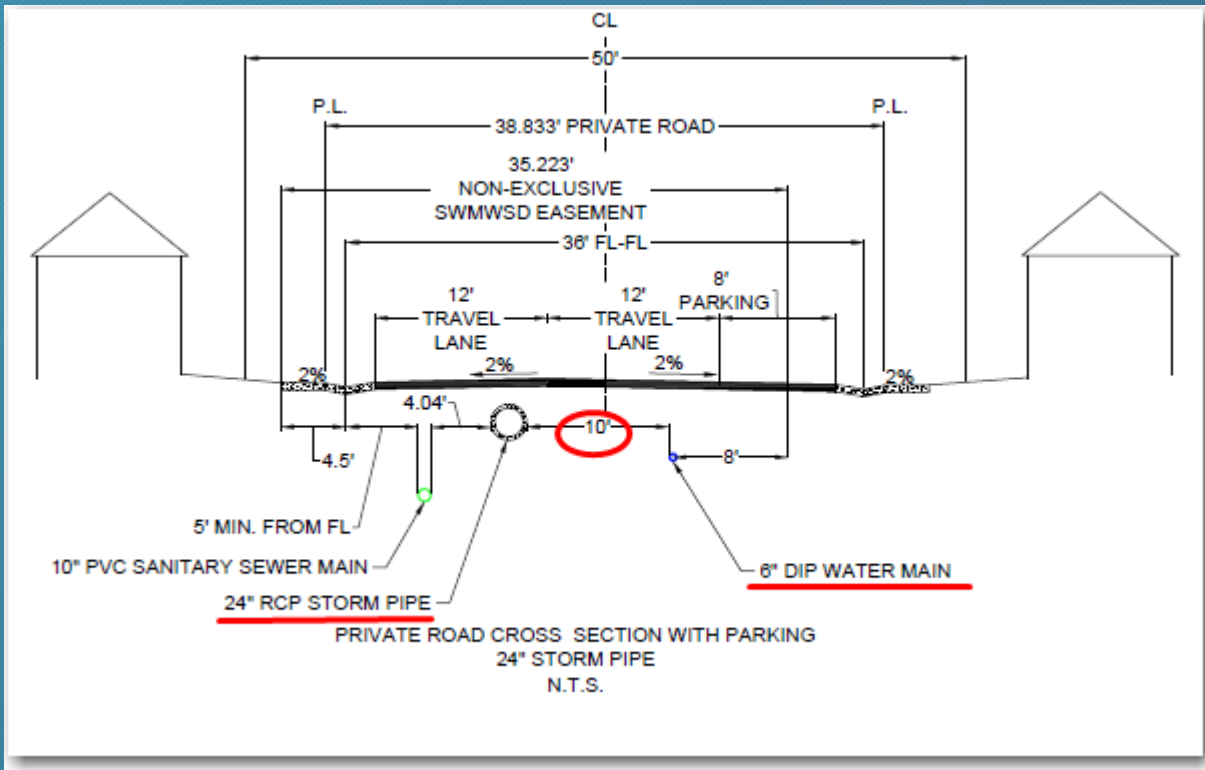
Overall Project Map



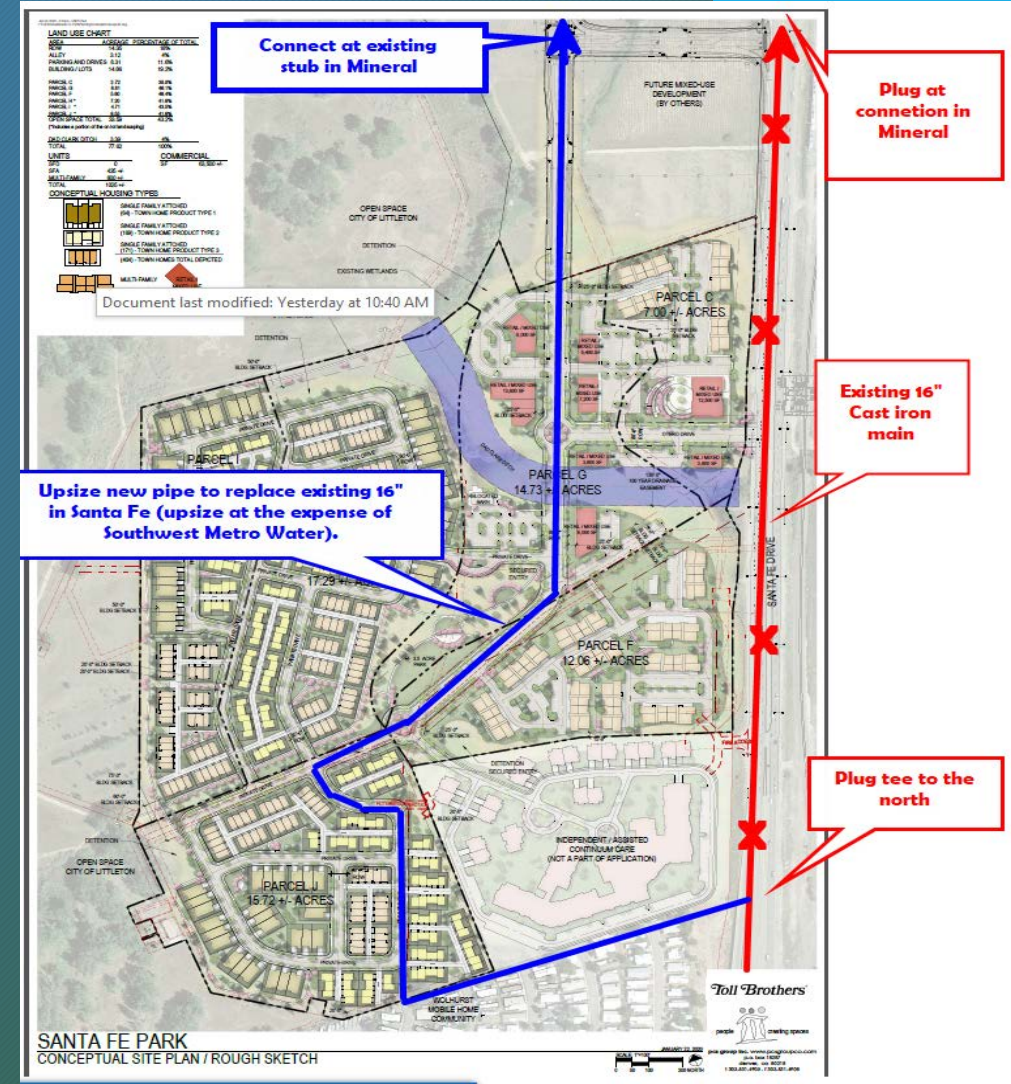
NEW DEVELOPMENT PROJECTS IN DESIGN/PLAN REVIEW:

CONCEPTUAL PROJECTS; RECENT ACTIVITY:

- PROJECT NAME: Santa Fe Park South
- LOCATION: 3000' South of Mineral Ave; West Side of Santa Fe (adjacent to Wolhurst)
- STATUS: Working on Metro District creation with Littleton and Toll Brothers (Tim reviewing Service Plan – Resolution of Consent)
- Water– In Design – Worked with DW and Engineer on required 10' separation issue
- Sewer – In Design
- SCOPE: Multi Family (336 units) and Townhome (403) Development -
- ANTICIPATED TAP REVENUE (South): sewer - \$989,658.00 & water (size TBD) - \$2,140,200.00



Typical Street Cross Section - 35' Easement

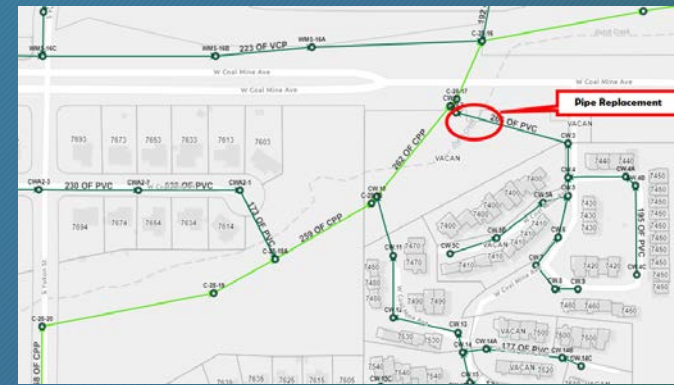


PROPOSED PIPE ROUTE



*THE FOLLOWING ARE DEVELOPMENT PROJECTS IN
VARIOUS STAGES OF CONSTRUCTION*

- **PROJECT NAME:** Dutch Creek Crossing Coal Mine – Drainage Improvement
- **LOCATION:** Coal Mine East of S. Yukon St
- **STATUS:** In construction; Start on north side of Coal Mine, sewer main work in August
- **SCOPE:** Encase 8" Sewer Pipe Under Dutch Creek



Project Location



8" Sewer Main with Insulation and Skids



Casing Skid - Supports Pipe in Casing Pipe



Excavation south side Coal Mine



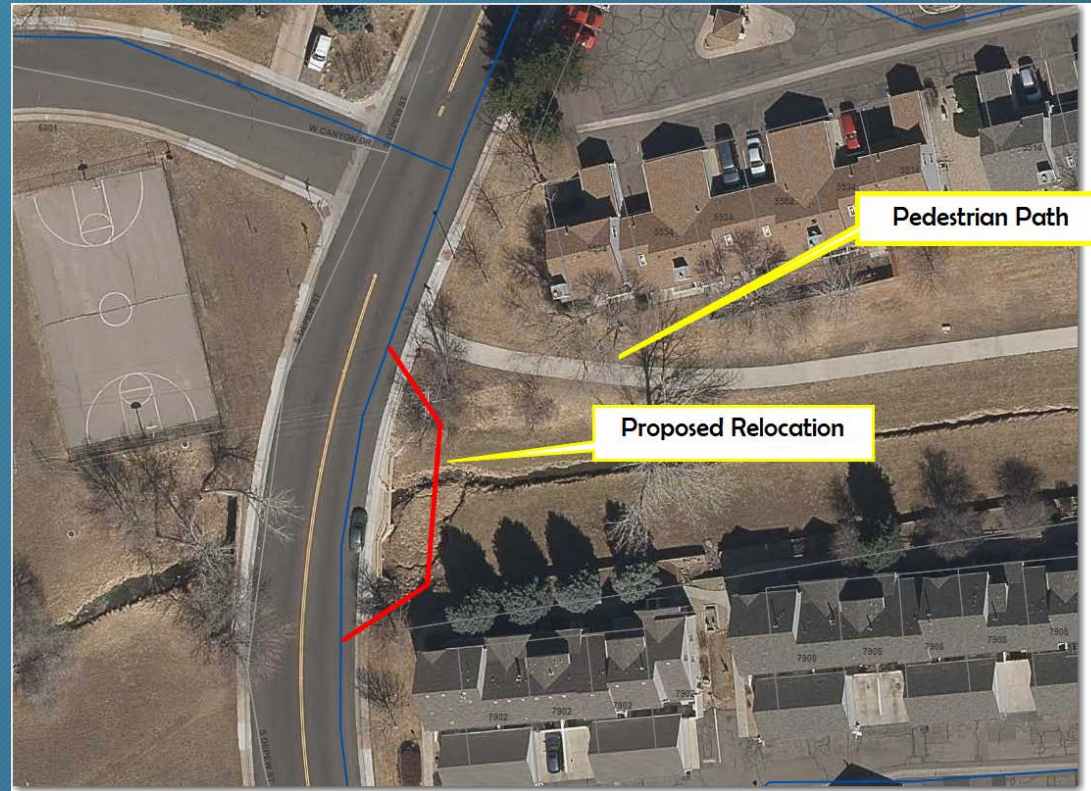
THE FOLLOWING ARE 2021 CAPITAL PROJECTS IN DESIGN

THE FOLLOWING ARE 2021 CAPITAL PROJECTS IN CONSTRUCTION

- PROJECT NAME: S Depew St & Canyon (Including Massey Draw Culvert Crossing) – 21-3W
- STATUS: In Construction
- SCOPE: 1900' of 8" PVC – 21-3W
- Customer notifications – Website, Nextdoor, Facebook, door to door- regarding traffic and service disruption. Addition notification to Millbrook Townhomes - traffic impact notification – Construction Notification with signs along path



Construction in Depew



Impact to Pedestrian Path

CONSTRUCTION AHEAD

FOR MORE INFORMATION PLEASE VISIT:
www.plattecanyon.org/construction-corner
or call **303-979-2333**

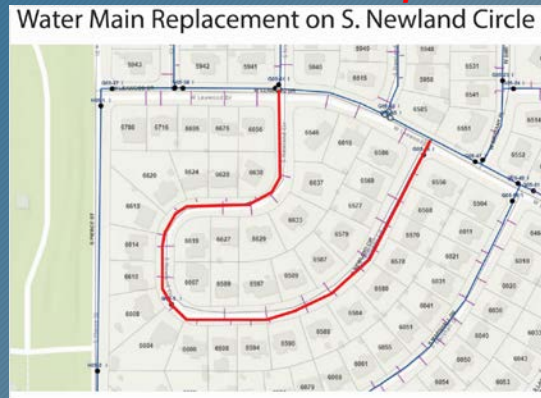


Notification Signage

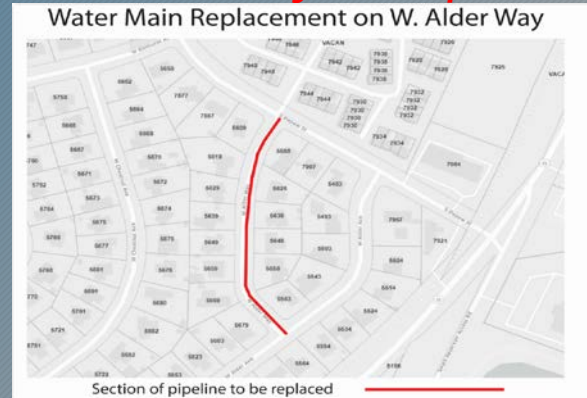
- CAPITAL PROJECTS CONSTRUCTION **STATUS/SCHEDULE** – Meeting planned with Foothills and Mile High Flood Control to discuss path detour and construction in creek flow

- PC PROJECTS:

 - Newland Cir – Complete*



 - Alder Way – Complete*



S Depew St between Platte Canyon Rd and W. Canyon Trail. – 1900' of 8" PVC (CIP 21-IW) **In Construction**

- *Contract amount \$1,095,832*

- SWM PROJECTS:

 - A. S Holland Wy between W. Arbor Pl and S Garland Ct (CIP 20-IW) 300' of 12" PVC – **Start Late August**

- *Contract amount \$160,168*

QUESTIONS?