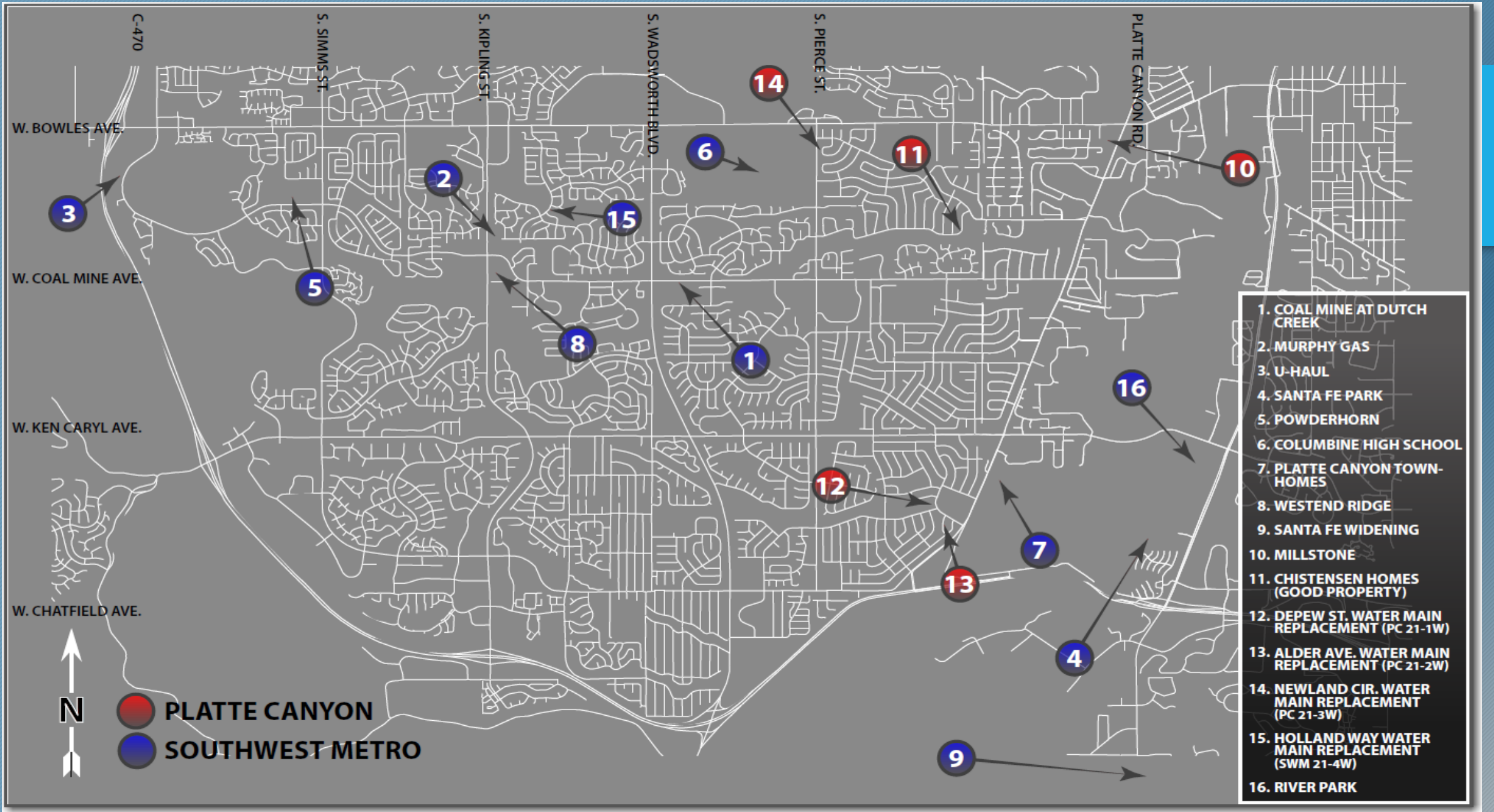


# PLAN REVIEW AND CONSTRUCTION STATUS REPORT – Oct. - 2021



SUMMARY of projects in design or under construction



Overall Project Map



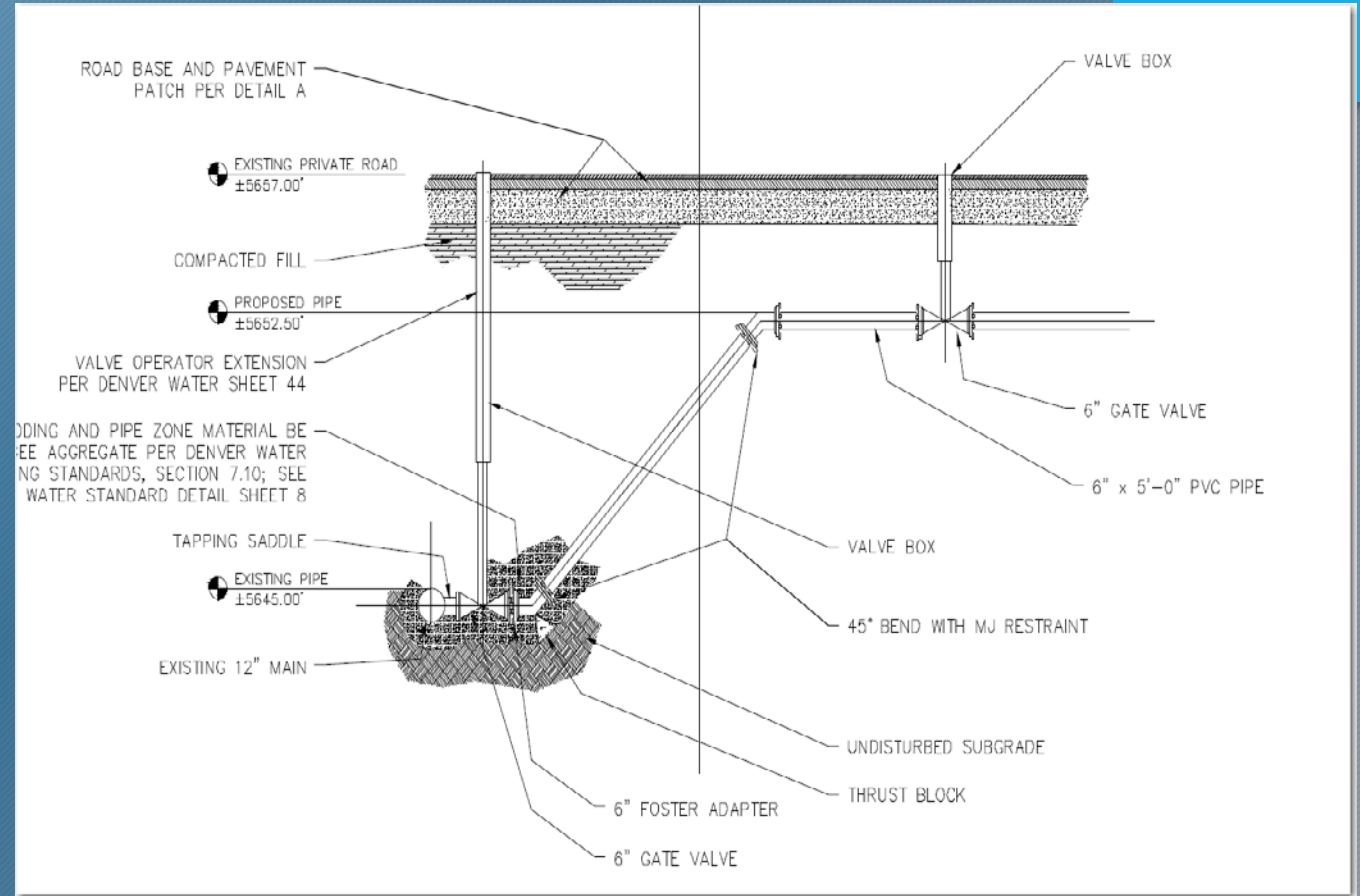
## *NEW DEVELOPMENT PROJECTS IN DESIGN/PLAN REVIEW:*

- 1. Murphy Express (Kipling and Coal Mine)*
- 2. Santa Fe Park South (Mineral and Santa Fe)*
- 3. River Park (Mineral and Santa Fe)*
- 4. Millstone at Columbine (Bowles and Platte Canyon Rd)*
- 5. Liftech (C-470 and Bowles)*
- 6. Ken Caryl Center Fil 2 (Ken Caryl and Pierce)*
- 7. Westend Ridge (Coal Mine and Independence)*

- PROJECT NAME: Murphy Express – Gas Station
- LOCATION: S. Kipling St., 500' South of W. Coal Mine Ave.
- STATUS: In Plan Review at DW – Easement Acquisition complete – Application and Agreement Complete
- SCOPE: 732' of 8" PVC Pipe

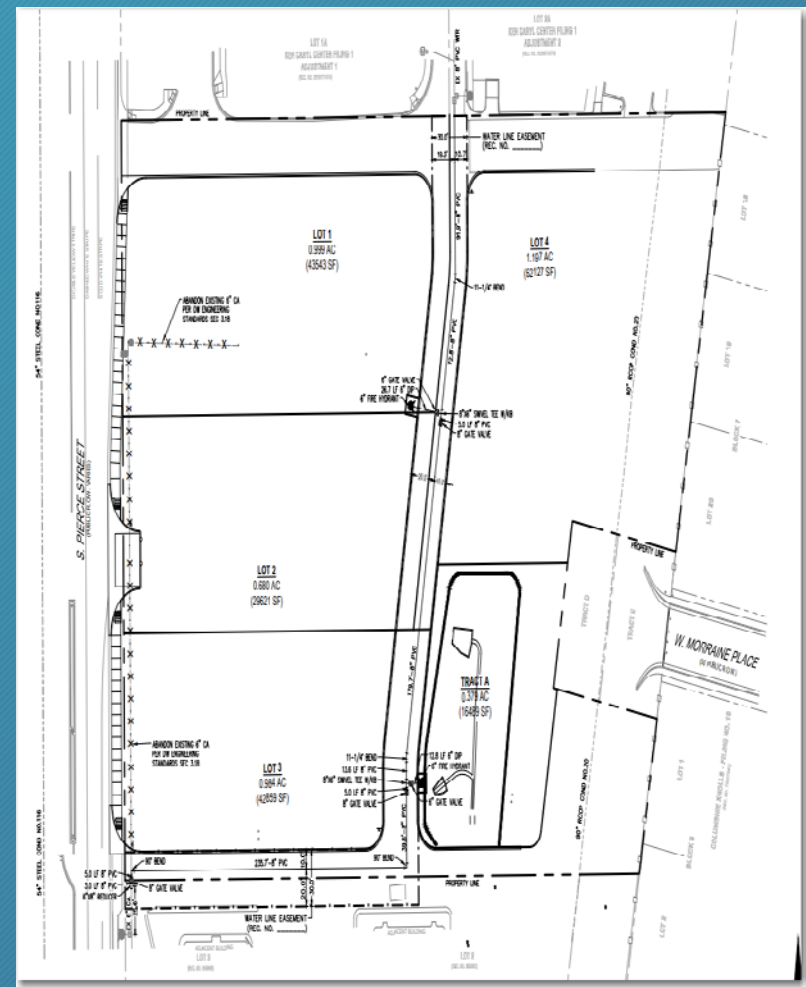


PROJECT LOCATION

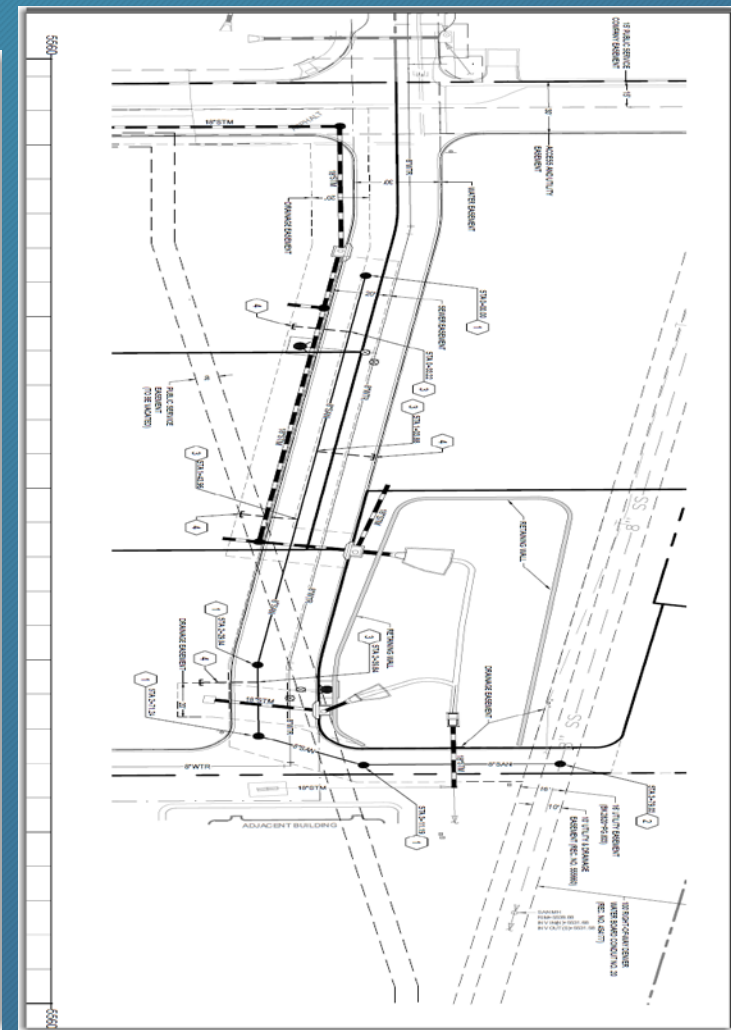


Profile of Walker PI Connection

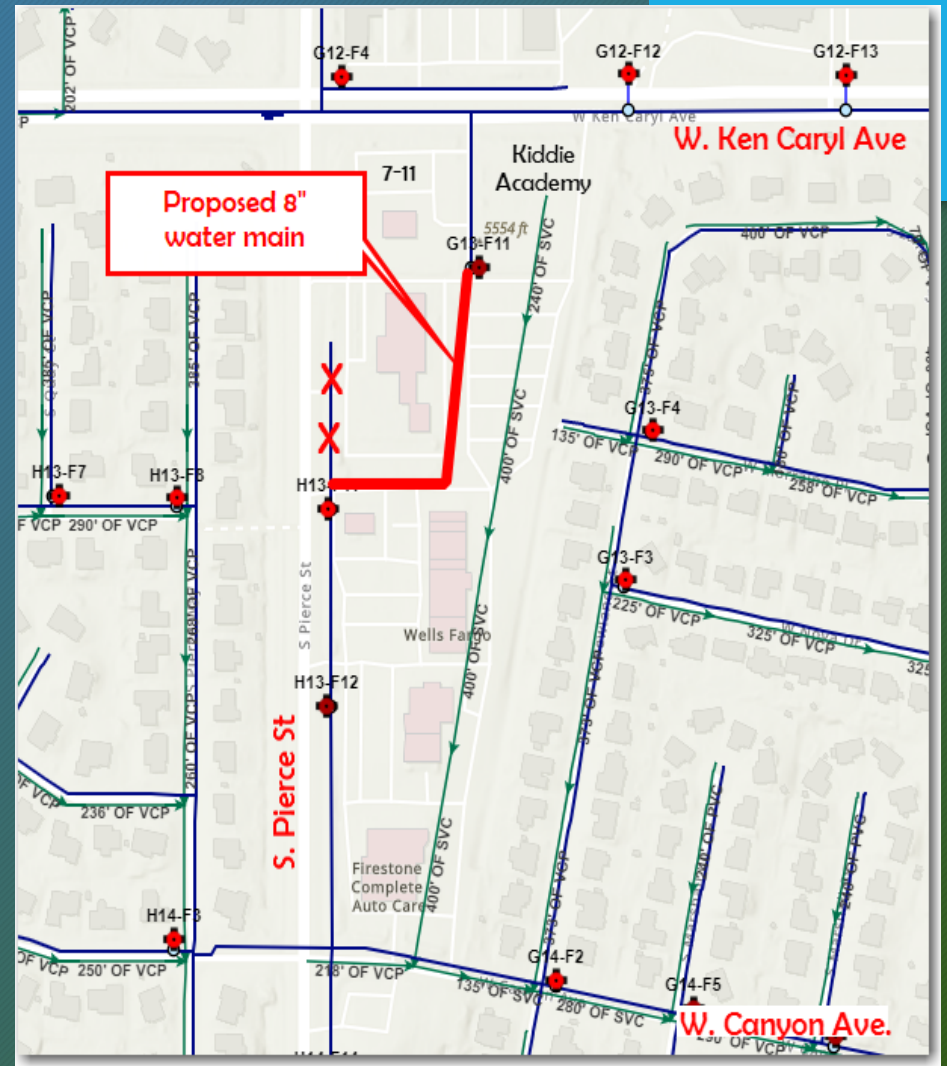
- PROJECT NAME: Ken Caryl Center
- LOCATION: Southeast corner of S. Pierce St and W. Ken Caryl Ave
- STATUS: Referral From Jefferson County
- Water- Preliminary
- Sewer - Preliminary
- SCOPE: Commercial Development



Preliminary Water Plan



Preliminary Sewer Plan



Proposed Pipe Route

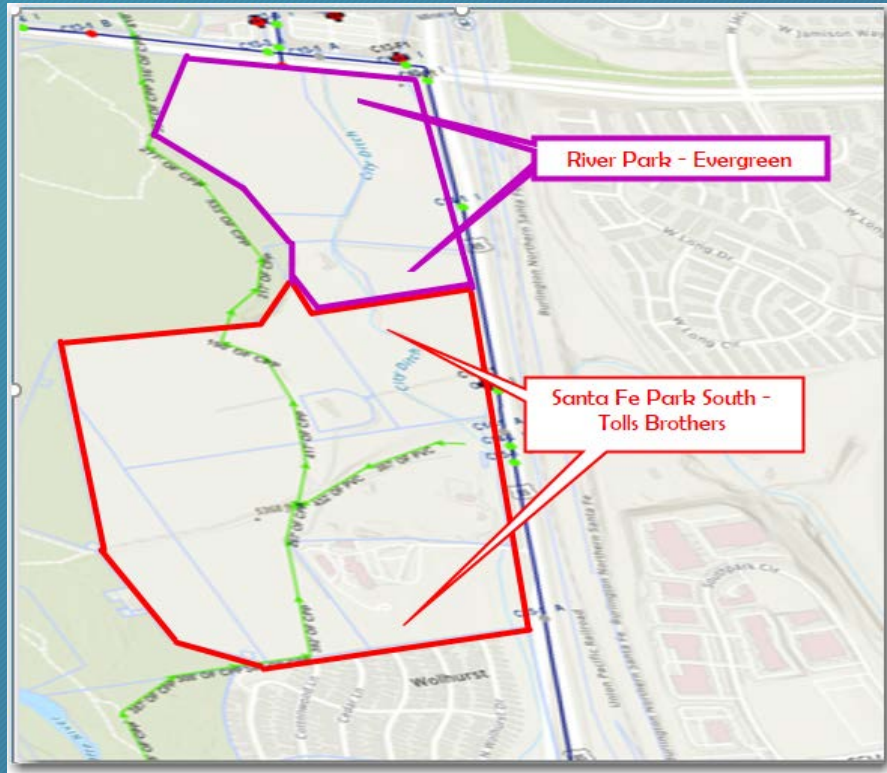
- PROJECT NAME: From north to south – River Park – (Evergreen Development/HKS) & Santa Fe Park South – (Toll Brothers/CVL)
- LOCATION: Mineral Ave and Santa Fe (from Mineral to Wolhurst)
- Status of Developments:

River Park – Lawsuit against City of Littleton – Design on hold

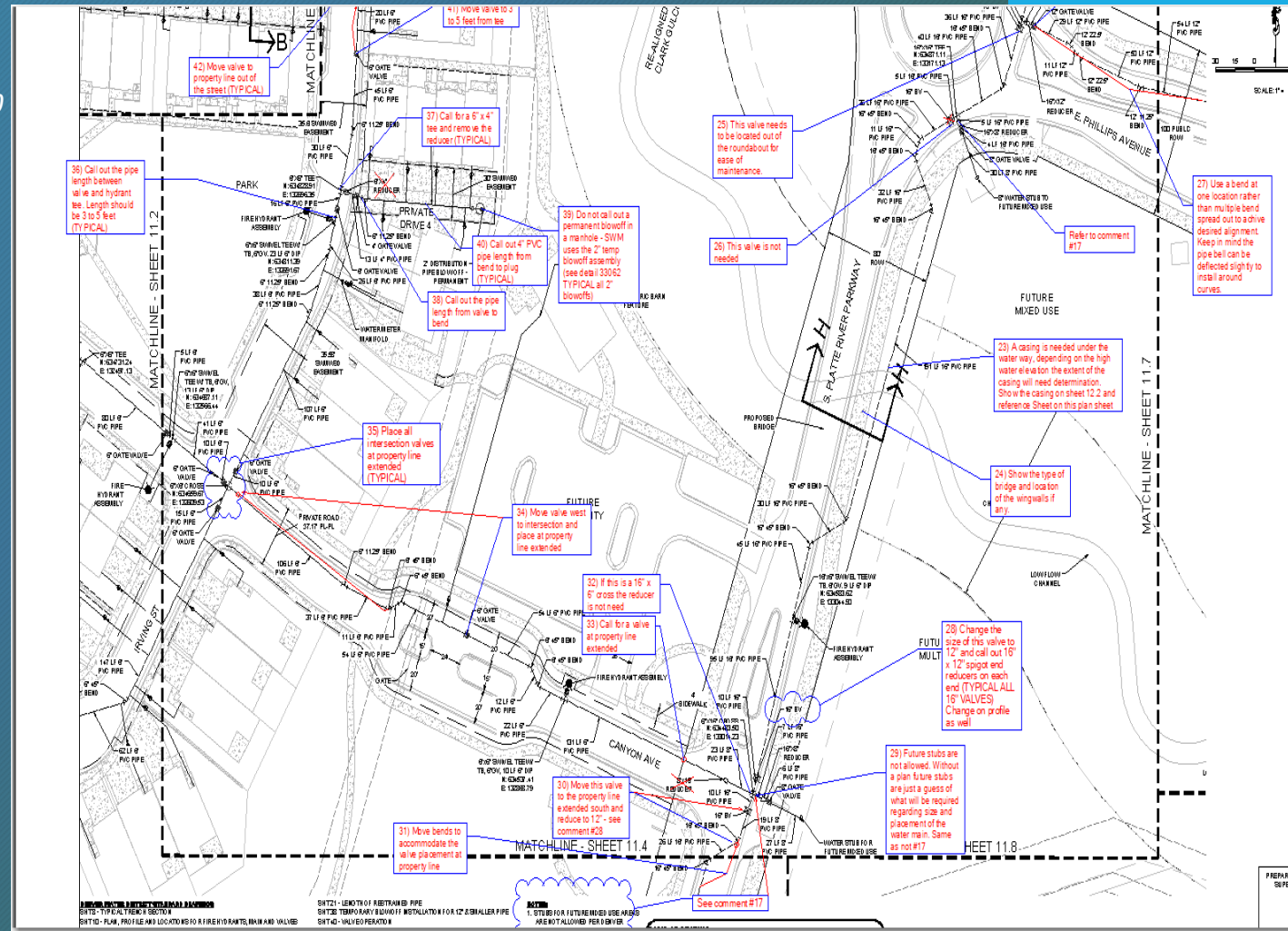
Santa Fe Park South – plans in design – funding capacity study of A-Line & D-Line from Mineral to Bellevue

- STATUS: Metro District formation – Santa Fe Park South (Tim completed Service Plan, Resolution of Consent)

- Water– In Design – #1 Submittal to Staff
- Sewer – In Design – Capacity study on the D-line and A-line (funded by Tolls)
- SCOPE: Multi Family (336 units) and Townhome (403) Development -
- ANTICIPATED TAP REVENUE (South): sewer - \$989,658.00 & water (size TBD) - \$2,140,200.00



Project Area - River Park and Santa Fe Park South



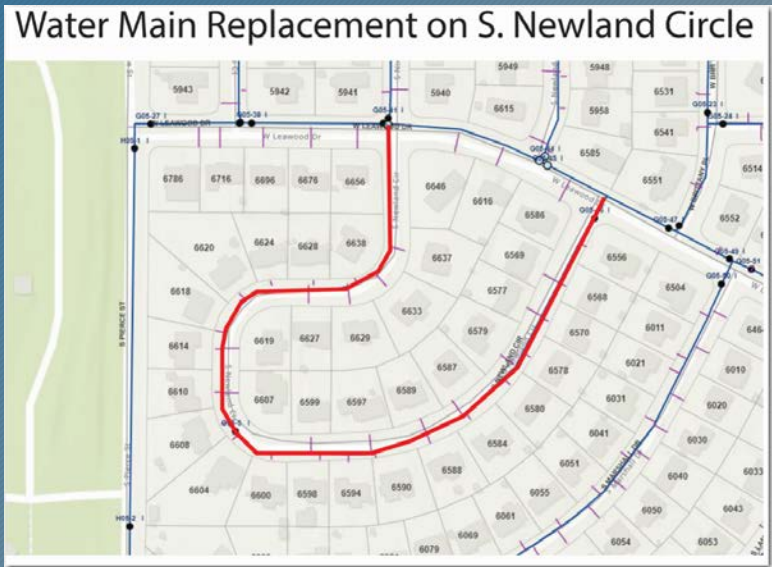
Santa Fe Park South - Water Plan Review Sheet

**THE FOLLOWING ARE 2021 CAPITAL PROJECTS IN CONSTRUCTION**

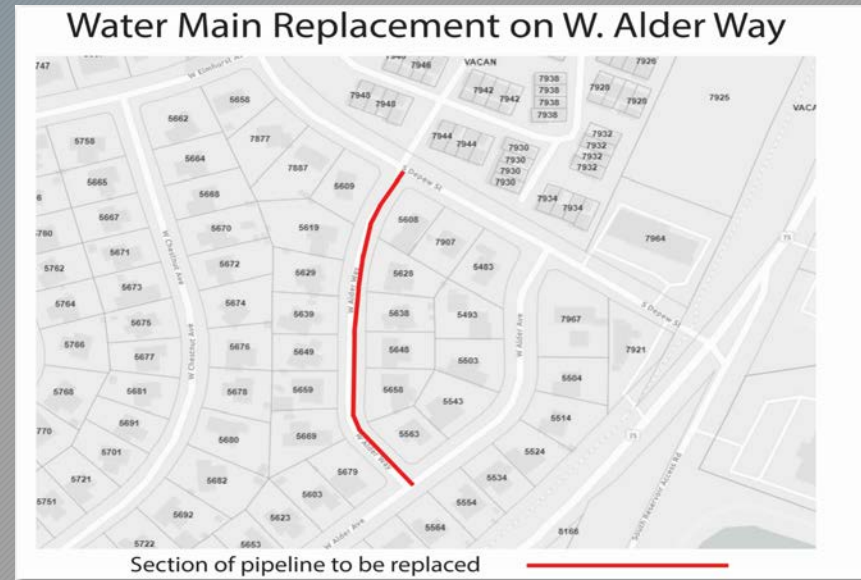
➤ CAPITAL PROJECTS CONSTRUCTION STATUS/SCHEDULE

➤ PC PROJECTS:

*Newland Cir – Complete*



*Alder Way – Complete*

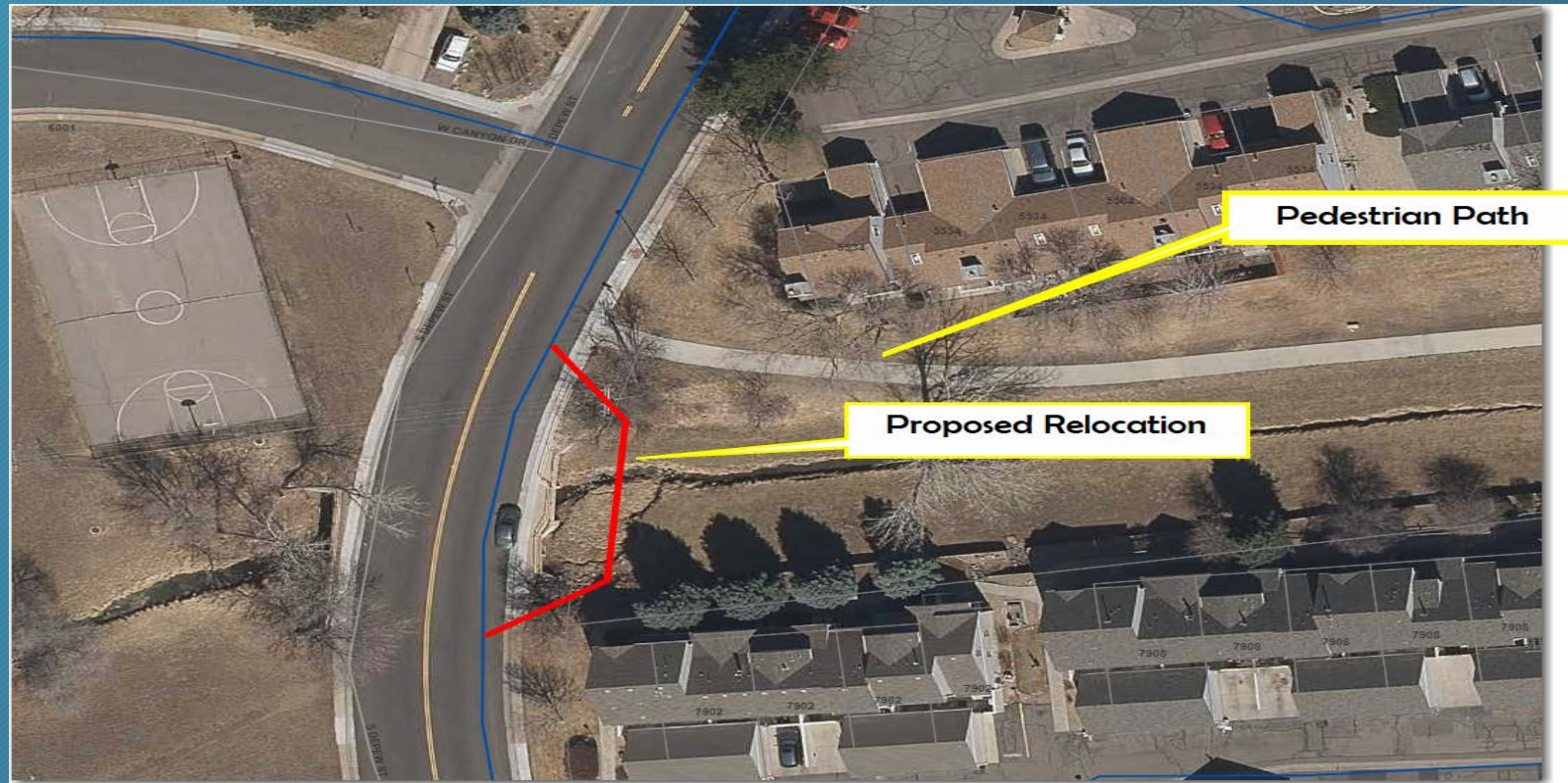


S Depew St between Platte Canyon Rd and W. Canyon Trail. – 1900' of 8" PVC (CIP 21-IW) *Culvert Crossing Pending – Start early October*

➤ Contract amount \$1,095,832



- PROJECT NAME: S Depew St & Canyon (Including Massey Draw Culvert Crossing) – 21-3W
- STATUS: In Construction
- SCOPE: 1900' of 8" PVC – 21-3W
- Customer notifications – Website, Nextdoor, Facebook, door to door- regarding traffic and service disruption. Addition notification to Millbrook Townhomes - traffic impact notification – Construction Notification with signs along path
- STATUS: All pipe in street ROW complete – Ditch crossing scheduled 2<sup>nd</sup> week of October



Pending Construction in Depew

# CONSTRUCTION AHEAD

FOR MORE INFORMATION PLEASE VISIT:  
[www.plattecanyon.org/construction-corner](http://www.plattecanyon.org/construction-corner)  
or call **303-979-2333**



Notification Signage

➤ SWM PROJECTS:

- A. S Holland Wy between W. Arbor Pl and S Garland Ct (CIP 20-IW) 300' of 12" PVC – Site Restoration – Tree replacement – Paving and Concrete

➤ *Contract amount \$160,168*

*Tree replacement  
Pending*



*Seeding this  
week*

*Looking West at Construction site Restoration*



*Sidewalk Replacement*





**THE FOLLOWING ARE 2022 CAPITAL PROJECTS IN DESIGN**

➤ **Miscellaneous Project Update:**

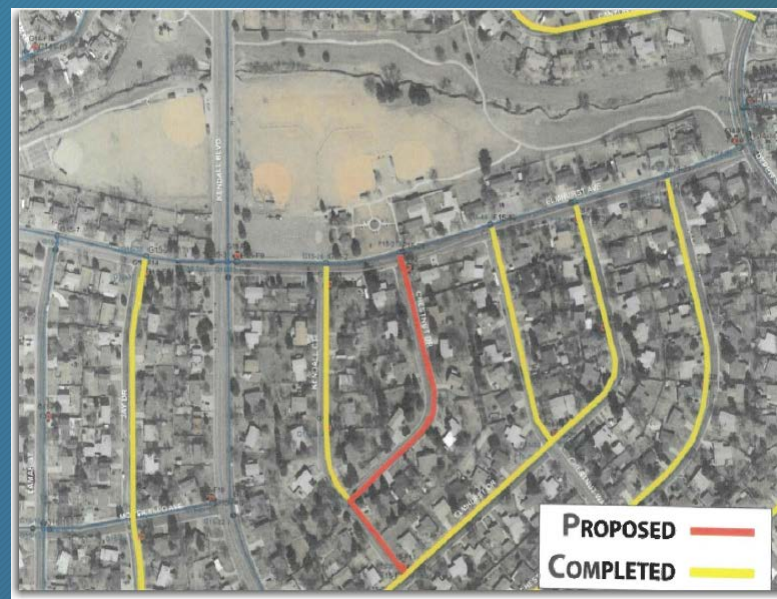
- Littleton 54" Sewer Lining Project – Littleton is using SWM D-Line as a by-pass line – Start October 14th

➤ **Begin designing the 2022 Capital Projects for SWM – PC – Bow Mar – and Valley**

➤ **Platte Canyon Three Water Projects:**



Elmhurst between Lamar and Depew – 2300' 12" PVC



Chestnut and Elmhurst – 1110' 6" PVC

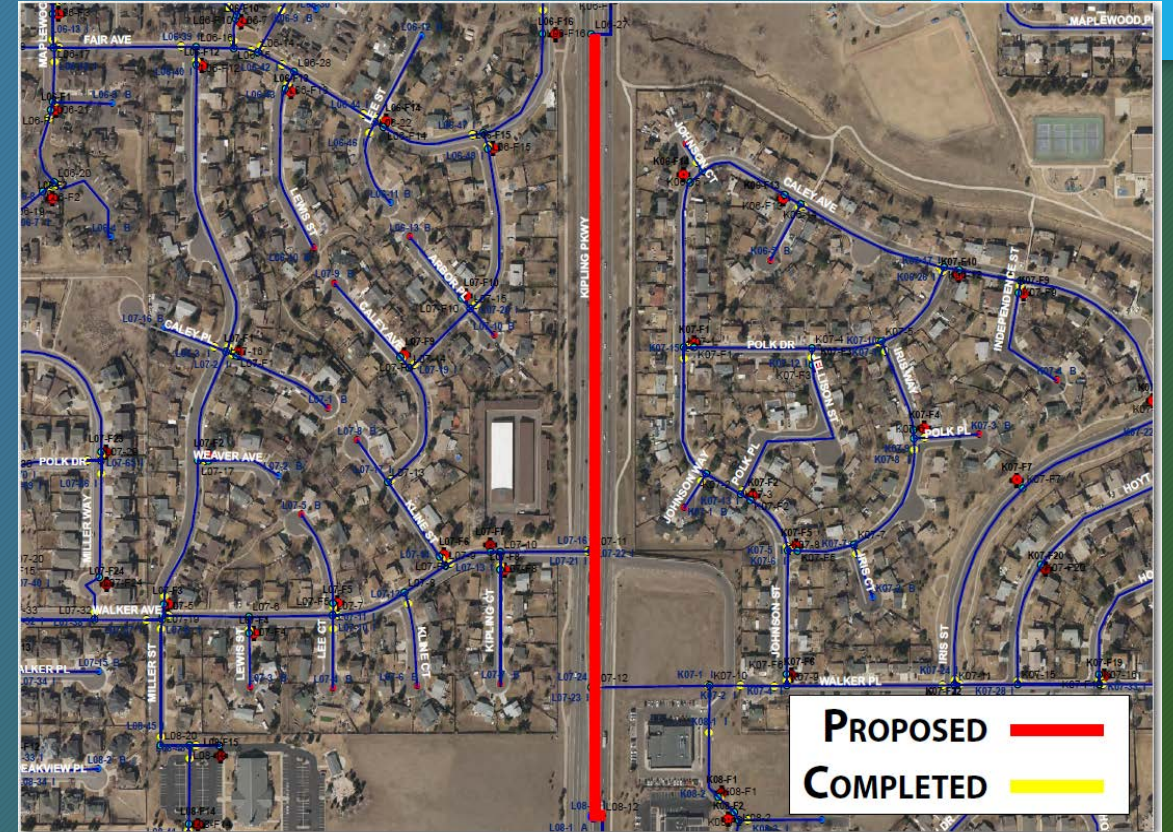


Caryl PI Depew to Ames – 404' 6" PVC

## ➤ SWM – 1 Sewer Project and 1 Water Project



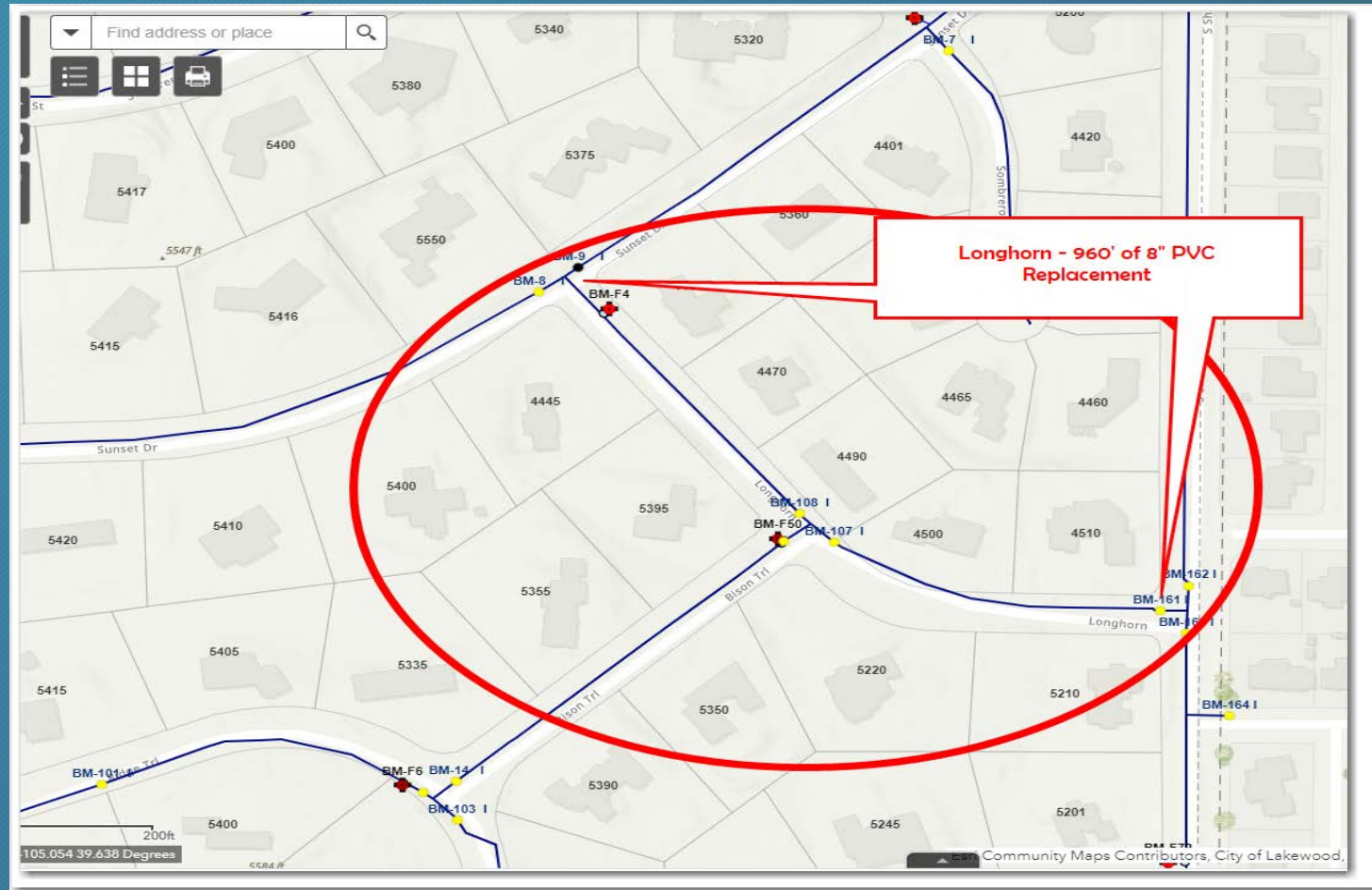
Everitt Way north of Peakview – Replace 227' of 8" Sewer main



Kipling from Coal Mine to Fair Ave – 2340' of 16" PVC



## ➤ Bow Mar – 1 Water Project



Longhorn – Sunset to Sheridan



QUESTIONS?