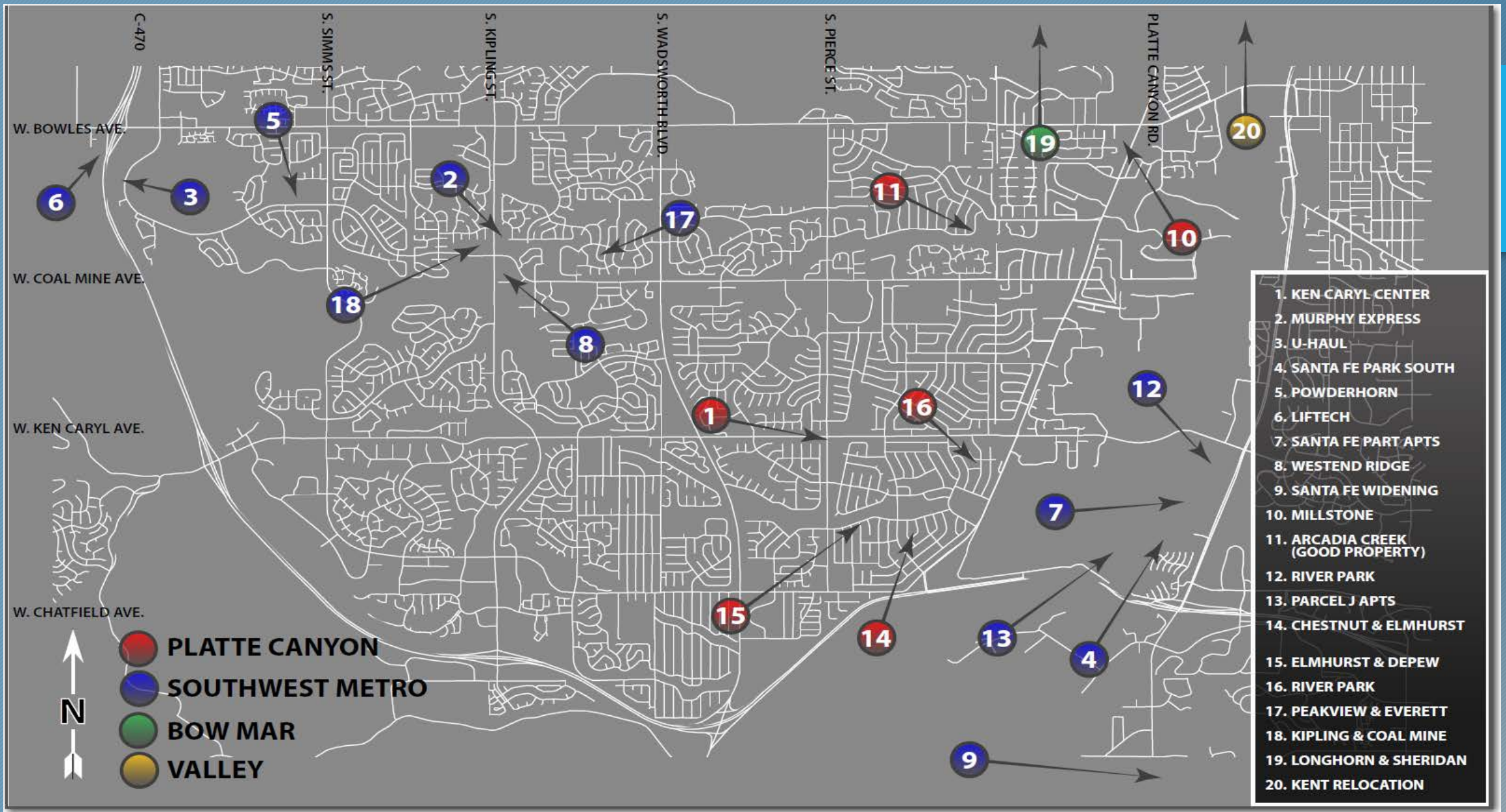


# PLAN REVIEW AND CONSTRUCTION STATUS REPORT – DEC. - 2021



SUMMARY of projects in design or under construction



Overall Project Map

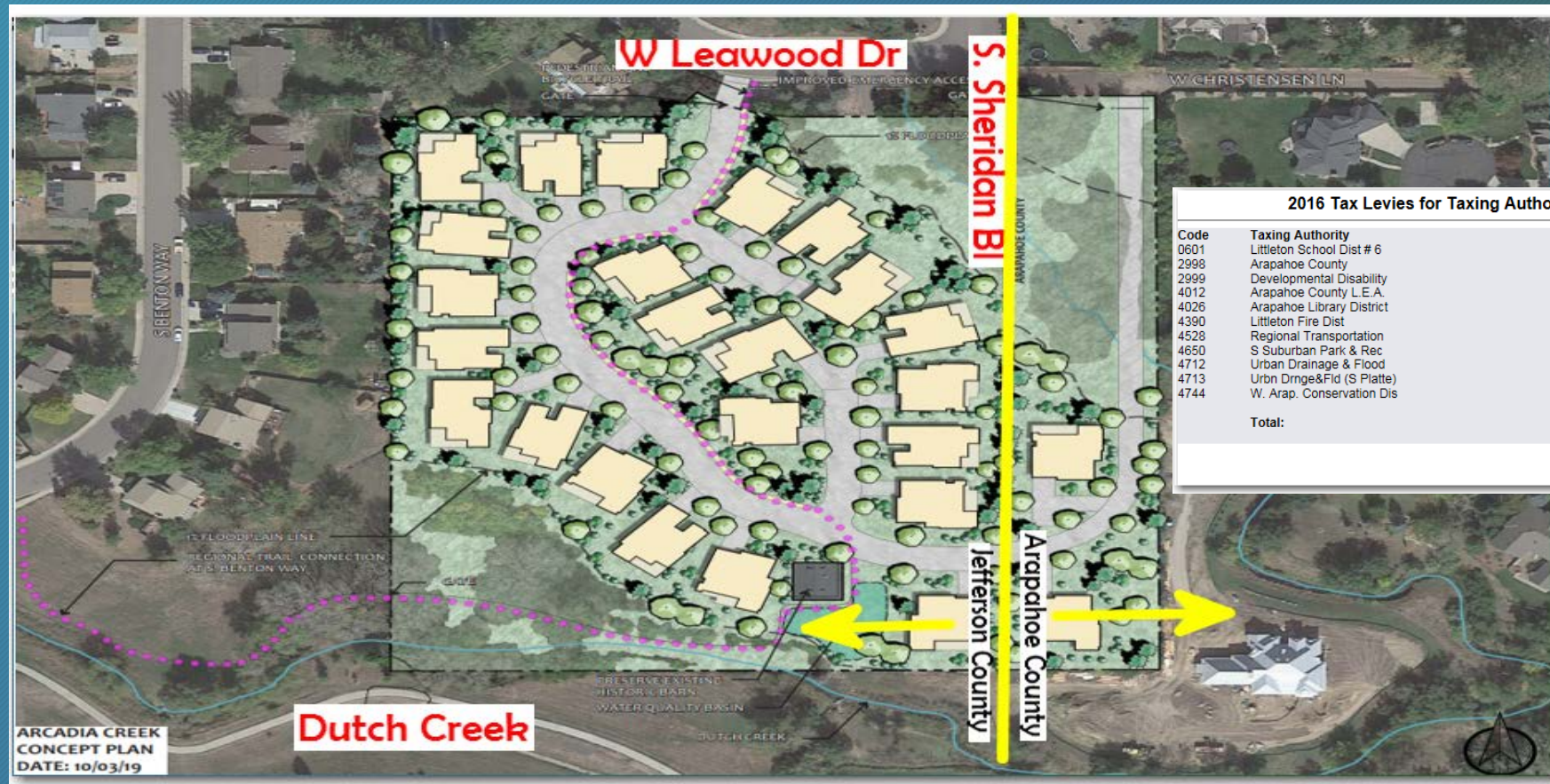
# ***NEW DEVELOPMENT PROJECTS IN DESIGN/PLAN REVIEW:***

Below are developer originated funded projects in various stages of plan review by District Staff, District Engineer and Denver Water

- 1. Murphy Express - Kipling and Coal Mine – Gas Station*
- 2. Ken Caryl Center Fil 2 - Ken Caryl & Pierce – Commercial Development*
- 3. Powderhorn Elementary - Simms and Coal Mine – School Expansion*
- 4. Santa Fe Park Apartments - Mineral & Santa Fe - Multi Family Development*
- 5. River Park - Mineral and Santa Fe – Multi-family and Commercial*
- 6. Parcel J Apartments - Mineral & Santa Fe – Multi Family*
- 7. Santa Fe Park South - Mineral & Santa Fe – Anticipated Revenue - \$3,000,000*
- 8. Millstone at Columbine - Bowles and Platte Canyon – Anticipated Revenue - \$93,000*
- 9. Liftech - C-470 and Bowles (warehouse)*
- 10. Westend Ridge - Coal Mine and Independence – Multi-family - Anticipate Revenue - \$901,000*
- 11. U-Haul - Coal Mine and Bowles (Storage Facility)*
- 12. Blakeland & Santa Fe Dr CDOT (Storage Building)*

**The following slides highlight the some of the active projects:**

- PROJECT NAME: Arcadia Creek (Good Property)
- LOCATION: W. Leawood Dr and S. Sheridan Blvd
- STATUS – Preliminary Design with District
- SCOPE: 22 Single Family Homes on 10,000 sq ft lots
- Property re-zoned for single family homes; portion of site is not annexed into Platte Canyon (Arapahoe County Portion)
- ANTICIPATE REVENUE: *sewer* - \$30,525 & *water* - \$70,500



2016 Tax Levies for Taxing Authority 0934		
Code	Taxing Authority	Levy
0601	Littleton School Dist # 6	53.0300000000
2998	Arapahoe County	14.0390000000
2999	Developmental Disability	01.0000000000
4012	Arapahoe County L.E.A.	04.9820000000
4026	Arapahoe Library District	05.9260000000
4390	Littleton Fire Dist	07.6780000000
4528	Regional Transportation	00.0000000000
4650	S Suburban Park & Rec	08.6430000000
4712	Urban Drainage & Flood	00.5590000000
4713	Urban Drng&Fid (S Platte)	00.0610000000
4744	W. Arap. Conservation Dis	00.0000000000
<b>Total:</b>		<b>95.9180000000</b>

PROJECT LOCATION

PROJECT NAME: From north to south – River Park – (Evergreen Development/HKS) & Santa Fe Park South – (Toll Brothers/CVL)

LOCATION: Mineral Ave and Santa Fe (from Mineral to Wolhurst)

Status of Developments:

River Park – Lawsuit against City of Littleton – Design on hold

Santa Fe Park South – plans in design – funding capacity study of A-Line & D-Line from Mineral to Bellevue

STATUS:

Water– In Design – #2 Submittal to Staff

Sewer – In Design – Capacity study on the D-line and A-line Complete

SCOPE: Multi Family (336 units) and Townhome (403) Development -

ANTICIPATED TAP REVENUE (South): sewer - \$989,658.00 & water (size TBD) - \$2,140,200.00



Project Location

Southwest Metro Water and Sanitation District: Sanitary Sewer Capacity Study

Manhole	to	Manhole	Diameter (in)	Length (ft)	Slope (%)	Existing			Proposed			
						SFEs	Peak Flow (cfs)	% Full	Velocity (ft/s)	Flow (cfs)	% Full	Velocity (ft/s)
D-13		D-12	33	409	0.16	15,688	6.30	37.4%	3.11	7.60	41.4%	3.27
D-12		D-11.1	33	194	0.02	15,688	6.30	70.3%	1.41	7.60	83.5%	1.43
D-11.1		D-11	33	230	0.07	15,688	6.30	47.0%	2.29	7.60	52.5%	2.40
D-11		D-10.1	46	46	0.15	15,688	6.30	24.1%	2.95	7.60	26.4%	3.11
D-10.1		D-10	33	405	0.02	15,688	6.30	70.3%	1.41	7.60	83.5%	1.43
D-10		D-9	33	448	0.12	15,688	6.30	40.4%	2.80	7.60	44.9%	2.94
D-9		D-8	33	478	0.05	15,688	6.30	51.9%	2.02	7.60	58.3%	2.11
D-8		AG-1	33	302	0.07	15,688	6.30	47.0%	2.29	7.60	52.5%	2.40
AG-1		D-7	36	114	0.29%	15,688	6.30	28.4%	3.82	7.60	31.2%	4.03
D-7		D-6	36	442	0.09	15,994	6.43	39.0%	2.52	7.73	43.1%	2.65
D-6		D-5	36	474	0.06	15,994	6.43	43.6%	2.17	7.73	48.4%	2.28
D-5		D-4	36	487	0.07	15,994	6.43	41.8%	2.30	7.73	46.3%	2.41
D-4		D-3.1	36	231	0.71	15,994	6.43	22.8%	5.29	7.73	25.1%	5.58
D-3.1		D-3	36	107	2.95	15,994	6.43	16.1%	8.74	7.73	17.6%	9.23
D-3		D-2.1	36	286	0.73%	15,994	6.43	22.7%	5.34	7.73	24.9%	5.63
D-2.1		D-2	36	114	0.73%	15,994	6.43	22.7%	5.34	7.73	24.9%	5.63
D-2		D-1	36	377	0.99%	16,223	6.52	21.2%	5.97	7.82	23.2%	6.30
D-1		A-39	36	447	0.68	16,223	6.52	23.2%	5.23	7.82	25.5%	5.51
A-39		A-38	42	196.7	0.39	16,223	6.52	21.8%	4.22	7.82	23.8%	4.45
A-38		A-37	42	239.6	0.154	16,223	6.52	27.5%	3.03	7.82	30.2%	3.20
A-37		BR-1	42	20	0.14%	16,223	6.52	28.2%	2.93	7.82	30.9%	3.09
BR-1		A-36	42	397	0.17%	16,223	6.52	26.8%	3.14	7.82	29.4%	3.31
A-36		A-35	42	359.6	0.154	33,524	10.79	35.7%	3.50	12.10	38.0%	3.61
A-35		A-34.1	42	100	-0.86%	33,524	10.79	65.1%	1.63	12.10	70.9%	1.66
A-34.1		A-34	42	16	7.07%	33,524	10.79	13.7%	13.59	12.10	14.5%	14.06
A-34		A-33	42	350	0.369	33,524	10.79	28.4%	4.79	12.10	30.2%	4.95
A-33		A-32	42	472.5	0.305	33,525	10.80	29.9%	4.47	12.10	31.7%	4.62
A-32		A-31	42	339	0.584	33,525	10.80	25.3%	5.64	12.10	26.8%	5.83
A-31		A-30	42	374	0.278	33,525	10.80	30.6%	4.33	12.10	32.5%	4.47
A-30		A-29	48	369.1	0.168	33,525	10.80	29.0%	3.57	12.10	30.8%	3.69
A-29		A-28	48	469.1	0.1	33,525	10.80	33.2%	2.96	12.10	35.2%	3.06
A-28		A-27	48	585.4	0.173	33,525	10.80	28.8%	3.61	12.10	30.5%	3.73
A-27		A-26	48	513.5	0.173	33,525	10.80	28.8%	3.61	12.10	30.5%	3.73
A-26		A-25	48	490	0.106	33,525	10.80	32.7%	3.03	12.10	34.7%	3.12
A-25		A-24	48	245	0.16	33,525	10.80	29.4%	3.51	12.10	31.2%	3.62
A-24		A-23	48	163.3	0.153	33,525	10.80	29.7%	3.45	12.10	31.5%	3.56

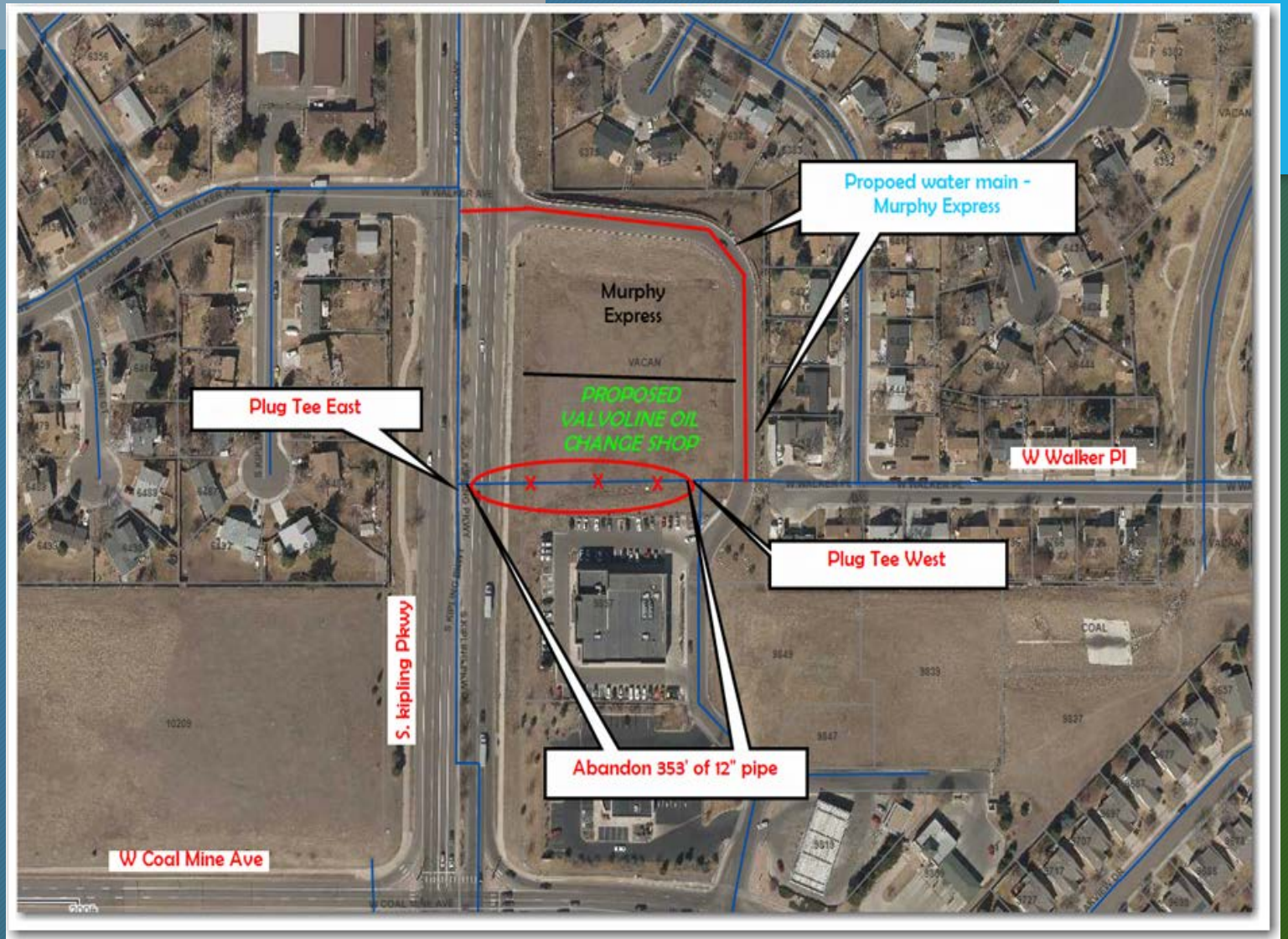
- 36" pipe from MH A-5 to MH A-6 (upsized to 48")
- 42" pipe from MH A-35 to MH A-34.1 (upsized to 48")
- 33" pipe from MH D-8 to MH AG-1 (upsized to 42")
- 33" pipe from MH D-9 to MH D-8 (upsized to 48")
- 36" pipe from MH D-10.1 to MH D-10 (upsized to 48")
- 36" pipe from MH D-12 to MH D-11.1 (upsized to 48")

Recommended Runs to Upsize

- PROJECT NAME: Murphy Express – Gas Station
- LOCATION: S. Kipling St., 500' South of W. Coal Mine Ave.
- STATUS: In Plan Review at DW – Valvoline asking to abandon south connection
- SCOPE: 732' of 8" PVC Pipe



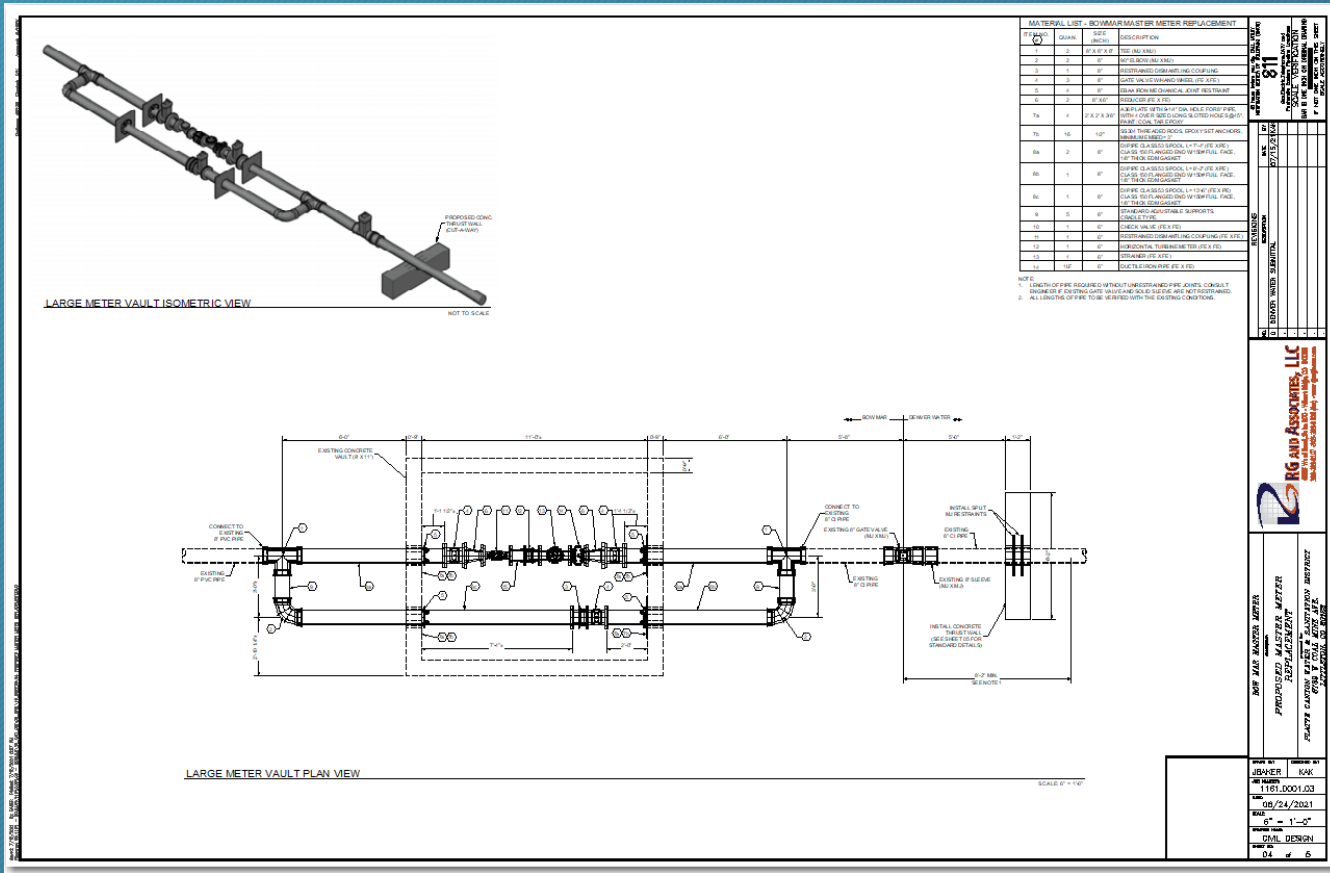
PROJECT LOCATION



Pipe Abandonment - Adjoining Project

**THE FOLLOWING ARE 2021 CAPITAL PROJECTS IN CONSTRUCTION**

- PROJECT NAME: Bow Mar Meter and Pipe Replacement
- LOCATION: Tufts Ave and S. Sheridan Blvd
- STATUS: In Design/Construction – started construction 11/17
- SCOPE: Replace pipe, valves and meter through existing vault



Plan Layout - Looking West

Plan and Isometric Drawing - Meter and Pipe in Existing Vault





**THE FOLLOWING ARE 2022 CAPITAL PROJECTS IN DESIGN**

➤ Project Update:

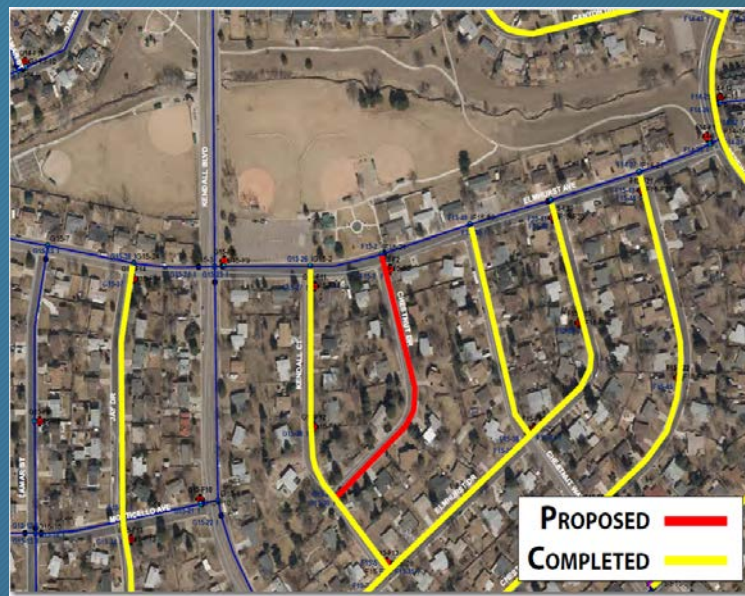
➤ **Platte Canyon Three Water Projects:**

➤ Bid Opening – 2/25/2022

➤ 60% design complete – submittal to Denver Water pending



Elmhurst between Lamar and Depew – 2300' 12" PVC



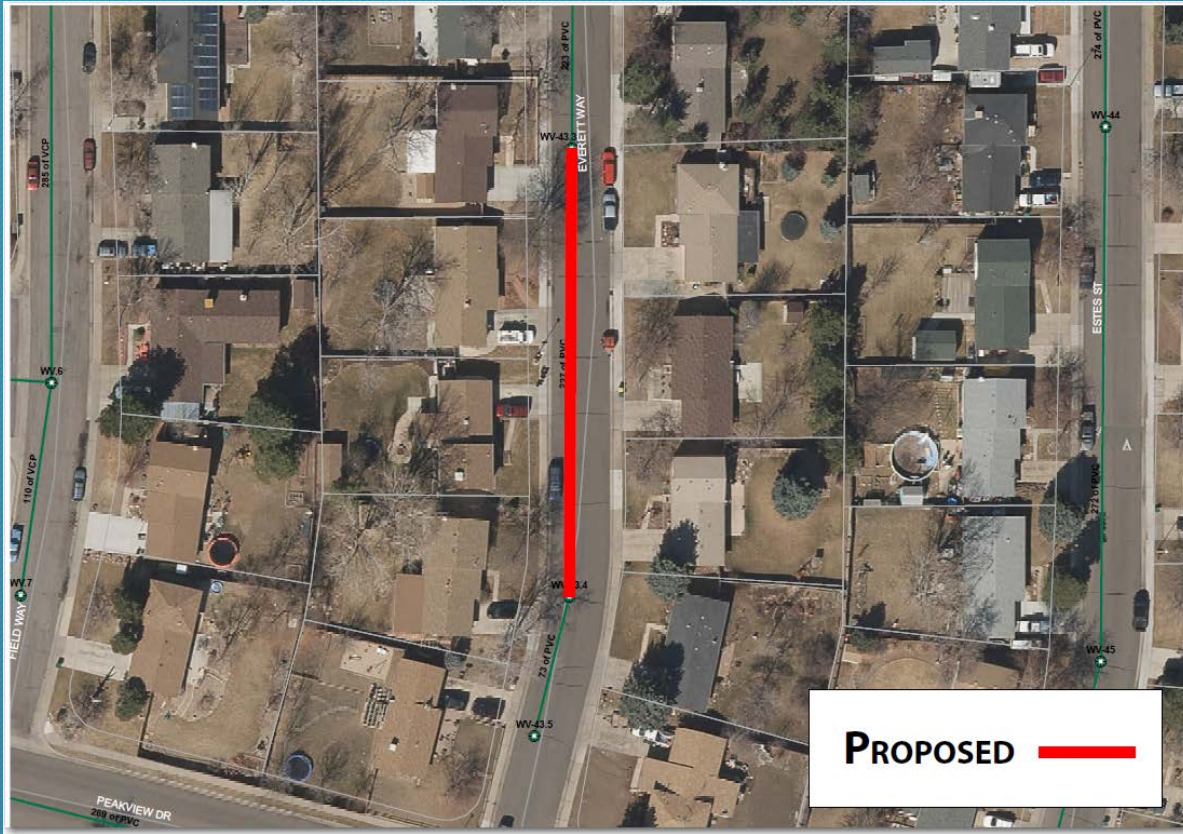
Chestnut and Elmhurst – 821' 6" PVC



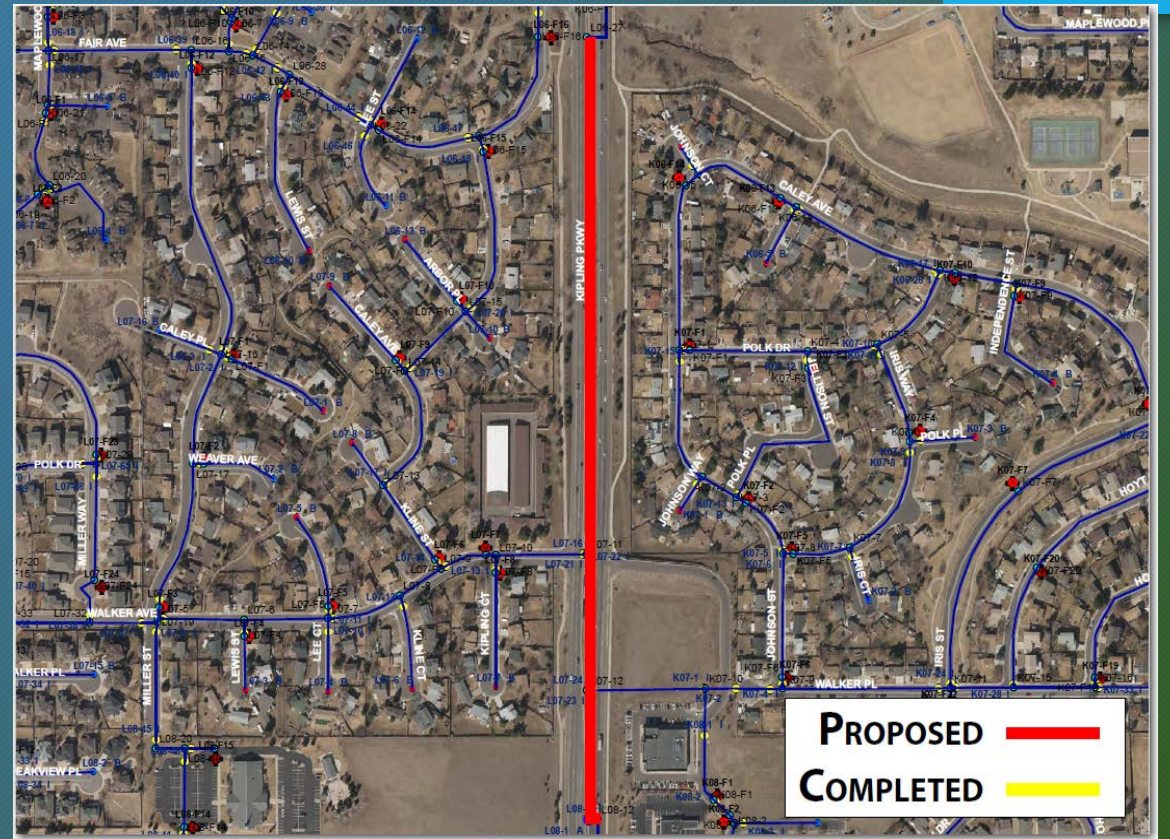
Caryl PI Depew to Ames – 404' 6" PVC

## ➤ SWM – 1 Sewer Project and 1 Water Project

- Bid Opening – 3/25/2022
- 30% design complete – submittal to Denver Water January 2022



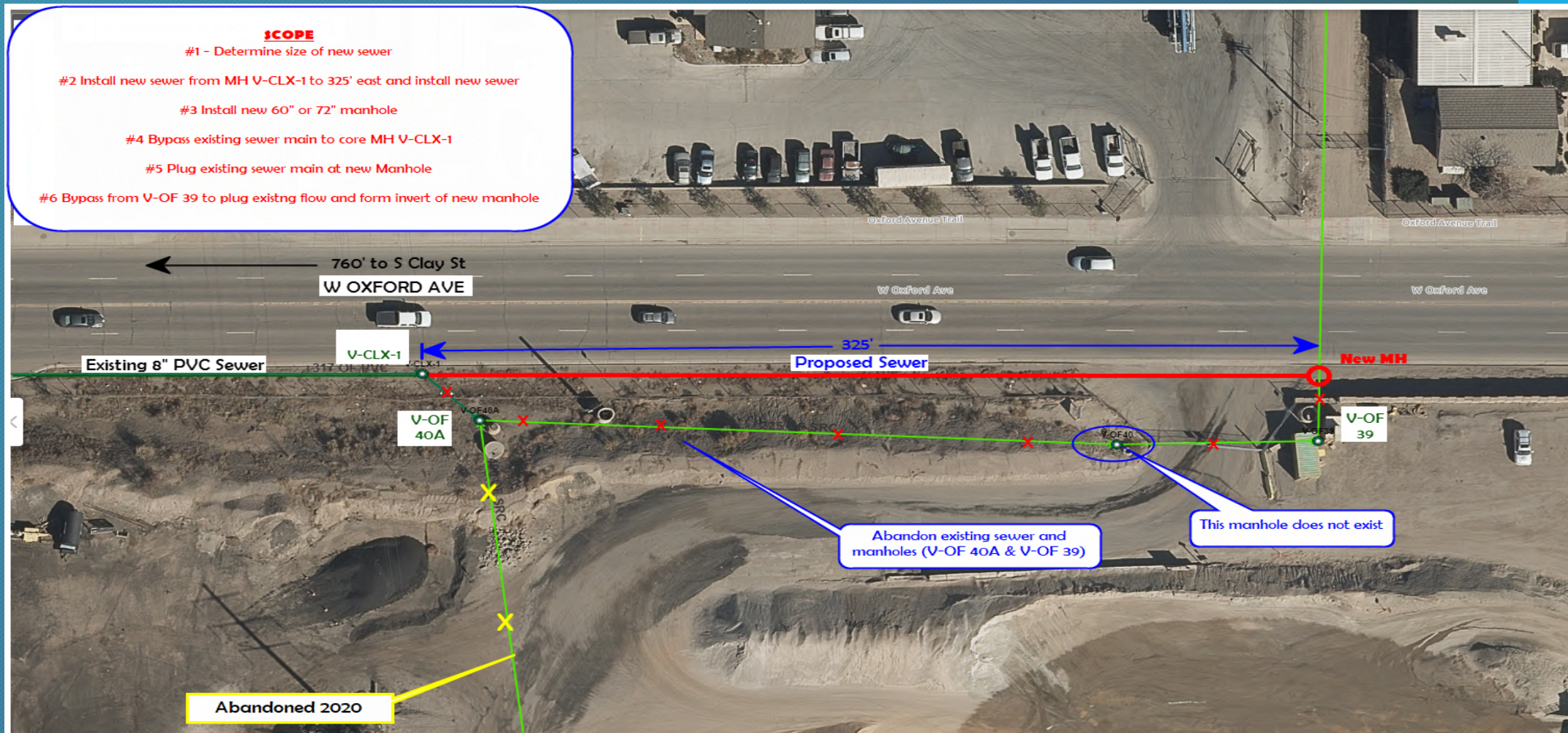
Everitt Way north of Peakview – Replace 227' of 8" Sewer main



Kipling from Coal Mine to Fair Ave – 2340' of 16" PVC

# ➤ Valley – Sewer Replacement – North of Kent Property

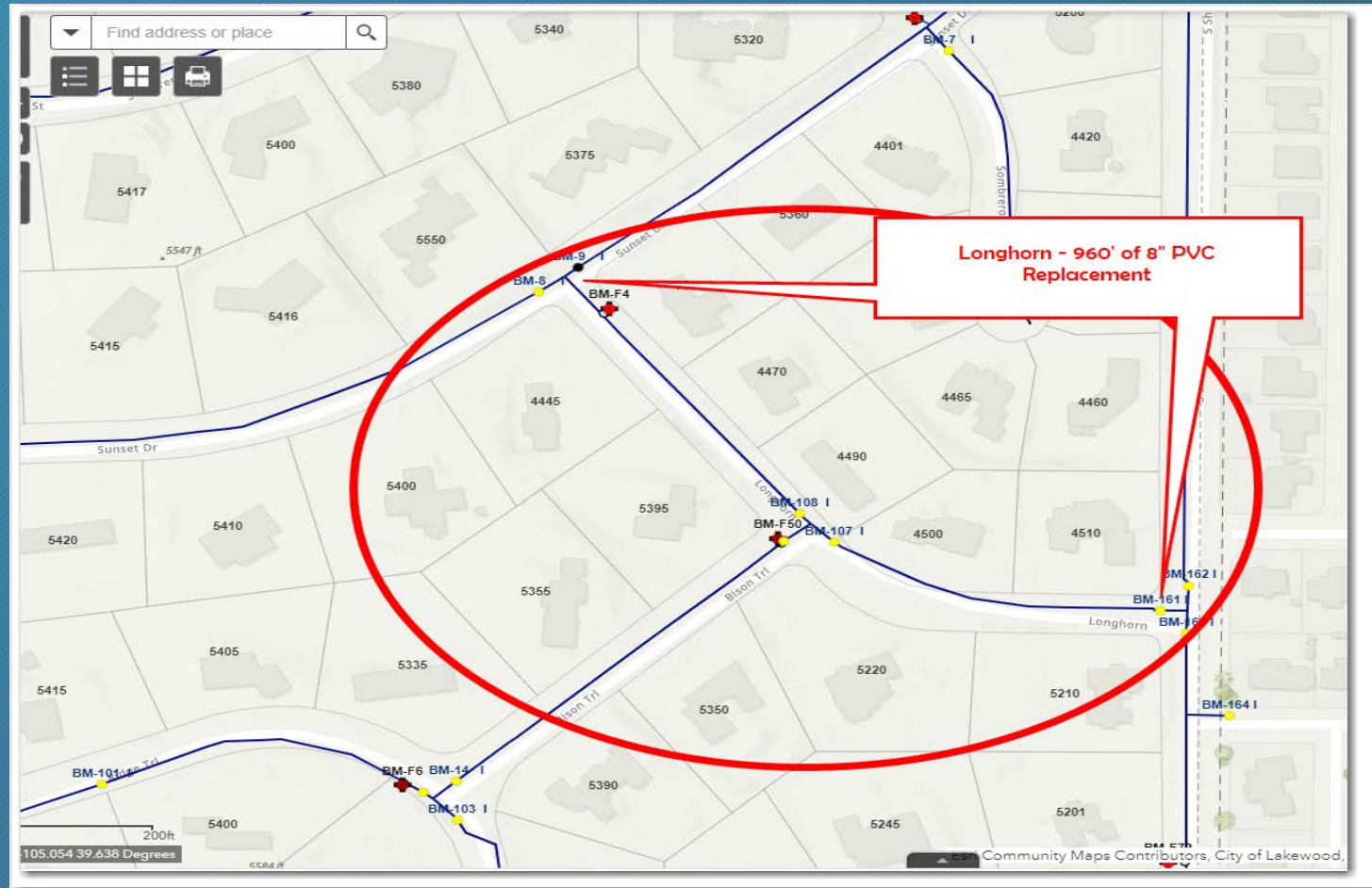
➤ Bid Opening – 3/25/2022



CONCEPTUAL PLAN

## ➤ Bow Mar – 1 Water Project

➤ Bid Opening 5/20/2022



Longhorn – Sunset to Sheridan

QUESTIONS?