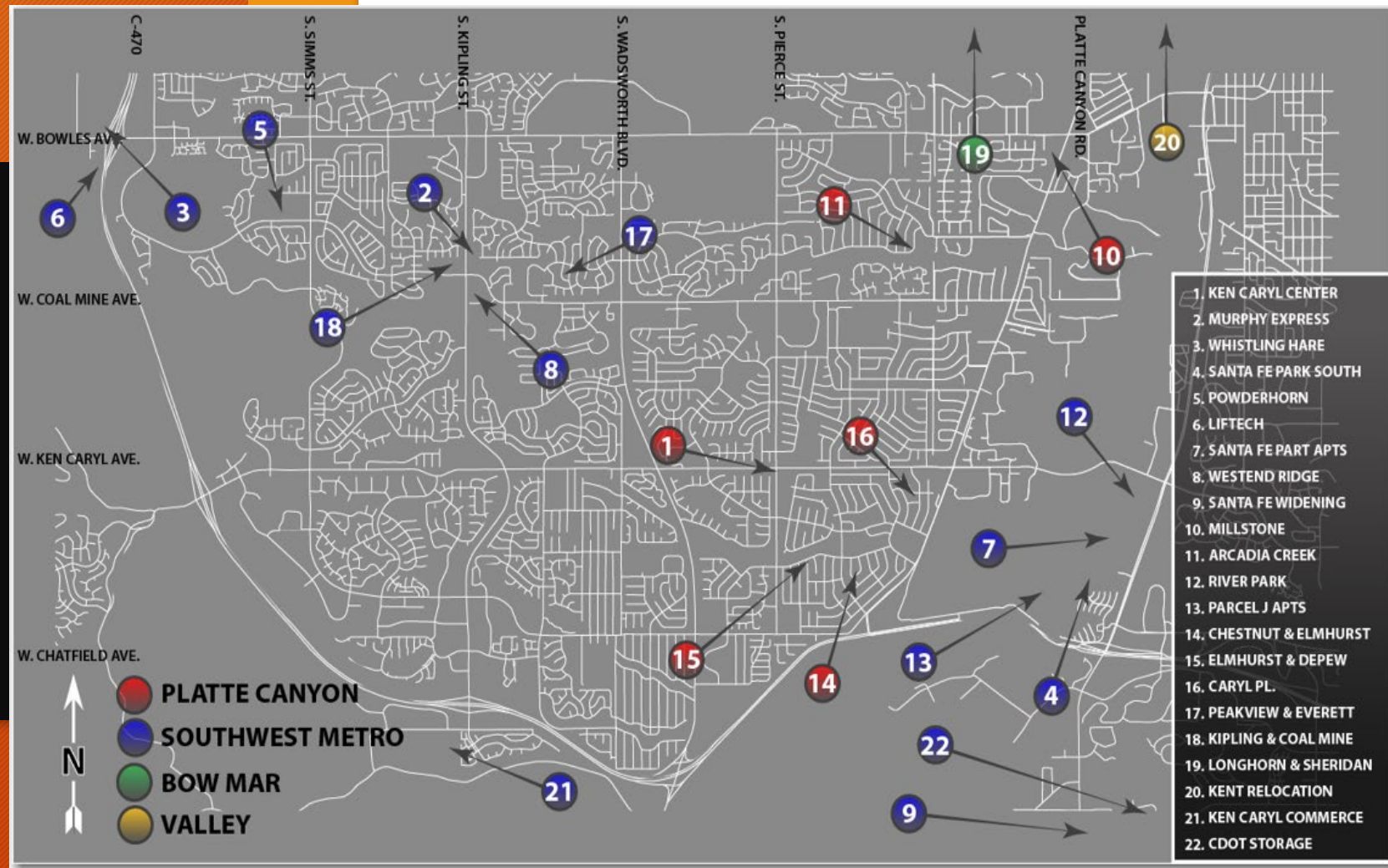


PLAN REVIEW AND CONSTRUCTION STATUS REPORT MAY - 2022

SUMMARY of projects in
design or under construction



Overall Project Map



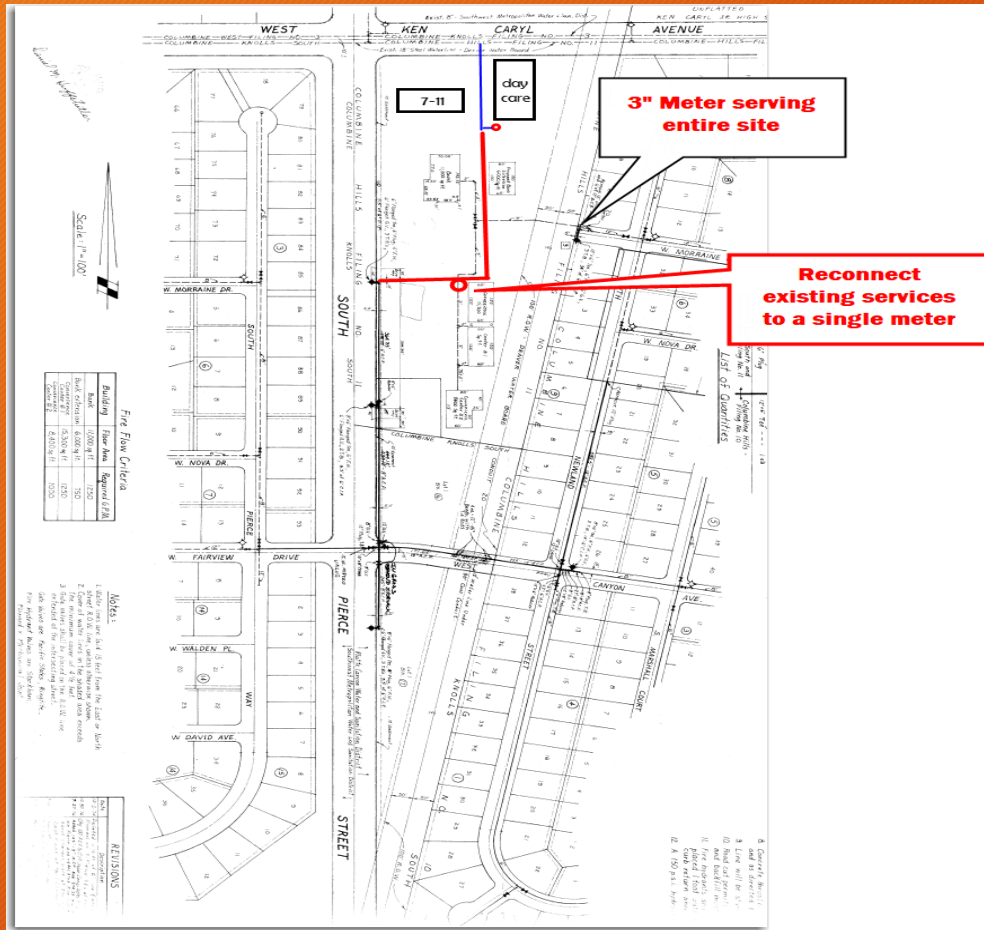
NEW DEVELOPMENT PROJECTS IN DESIGN/PLAN REVIEW:

Below are developer originated, developer funded, projects in various stages of plan review by District Staff, District Engineer and Denver Water

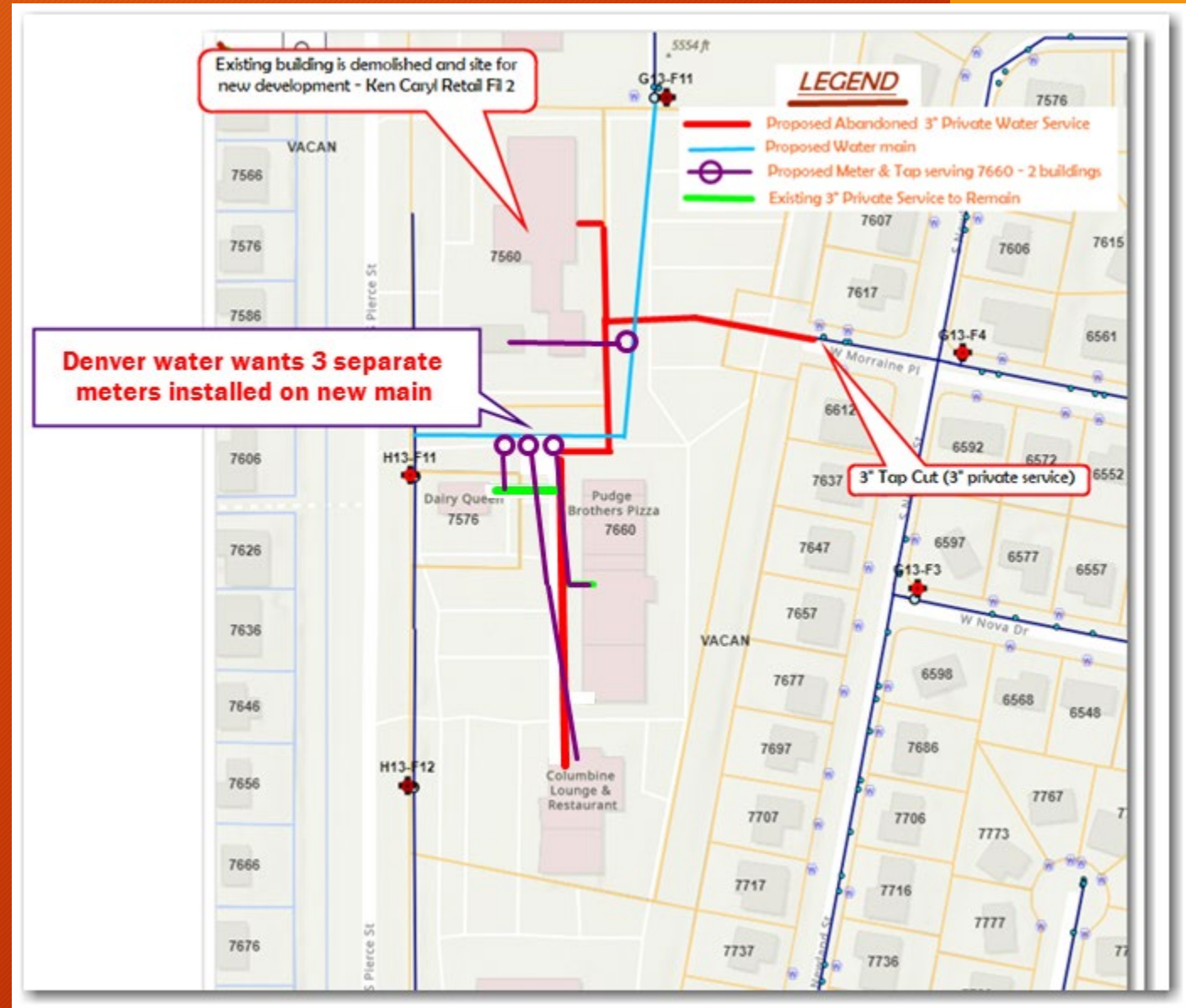
- 1. Murphy Express - Kipling and Coal Mine – Gas Station***
- 2. Ken Caryl Center Fil 2 - Ken Caryl & Pierce – Commercial Development***
- 3. Powderhorn Elementary - Simms and Coal Mine – School Expansion***
- 4. Santa Fe Park Apartments - Mineral & Santa Fe - Multi Family Development***
- 5. River Park - Mineral and Santa Fe – Multi-family and Commercial***
- 6. Parcel J Apartments - Mineral & Santa Fe – Multi Family***
- 7. Santa Fe Park South - Mineral & Santa Fe – Anticipated Revenue - \$3,000,000***
- 8. Millstone at Columbine - Bowles and Platte Canyon – Anticipated Revenue - \$93,000***
- 9. Liftech - C-470 and Bowles (warehouse)***
- 10. Westend Ridge - Coal Mine and Independence – Multi-family - Anticipate Revenue - \$901,000***
- 11. Arcadia Creek – Good Property Development***
- 12. Santa Fe Widening - CDOT***
- 13. Blakeland & Santa Fe Dr CDOT (Storage Building)***
- 14. Whistling Hare Distillery – Bowles and C-470***
- 15. Ken Caryl Commerce – Ute & Toller – Warehouse***

The following slides highlight the some of the active projects:

- **PROJECT NAME:** Ken Caryl Center
- **LOCATION:** Southeast corner of S. Pierce St and W. Ken Caryl Ave
- **STATUS:** In Design
- **Water–** In Review with Staff, RG and Denver Water
- **Sewer –** In Review with Staff and RG
- **SCOPE:** Commercial Development

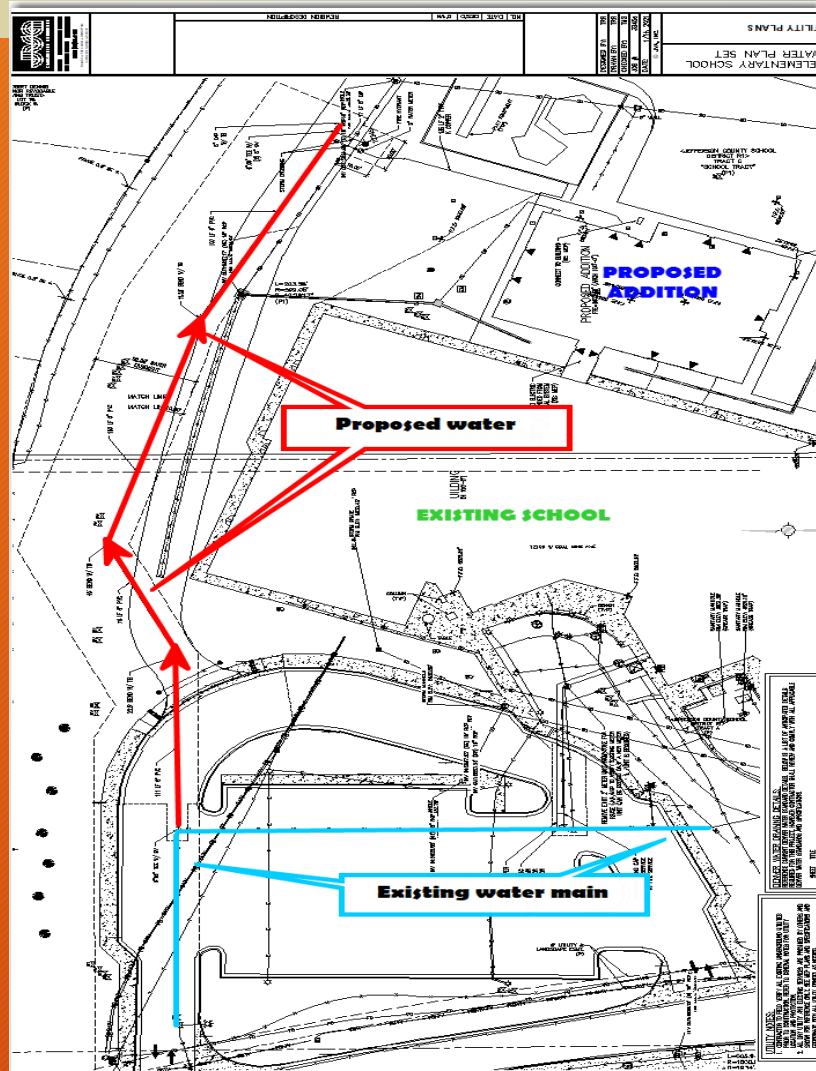


Suggested Existing Service Configuration



DW Reconfigured Water Service taps

- **PROJECT NAME:** Powderhorn Elementary
- **LOCATION:** Coal Mine; 1500' West of Simms
- **STATUS:** In Design
- **SCOPE:** Water Main Extension with Hydrant for School Expansion



PROJECT PLAN



School Campus Overview

- **PROJECT NAME:** TO BE DETERMINED
- **LOCATION:** Platte Canyon Rd and Depew St
- **ANNEXATION:** Need to review status
- **SEWER CONNECTION OPTIONS:** Flow study for SWM connection complete. Sewer connection to PC involves raising the site 11 feet.
- **SCOPE:** 165 Unit Single Family
- **ANTICIPATED REVENUE:** sewer - \$221,265 & water - \$478,500



1800 Ft Water Main Extension

PROJECT LOCATION

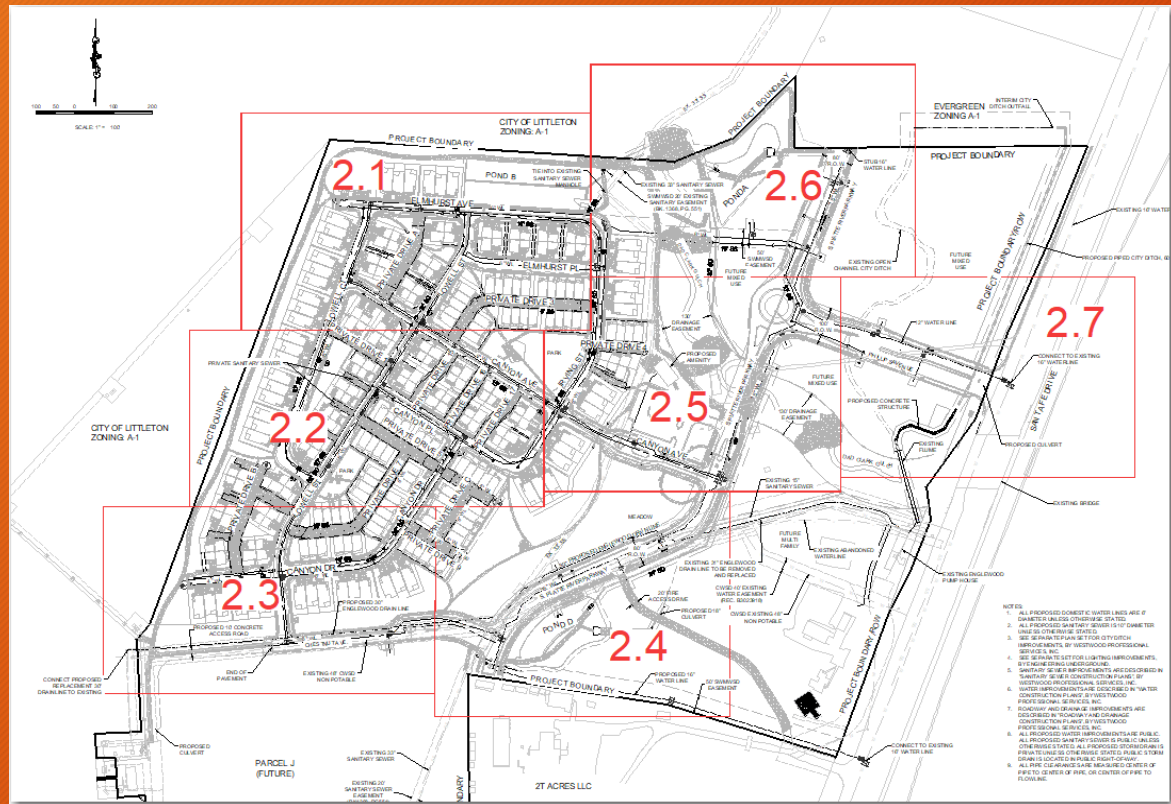
- **PROJECT NAME:** From north to south – River Park – (Evergreen Development/HKS) & Santa Fe Park South – (Toll Brothers/CVL)
- **LOCATION:** Mineral Ave and Santa Fe (from Mineral to Wolhurst)
- **Status of Developments:**

River Park – Need to extend 16" water main from Mineral, south to SFPS

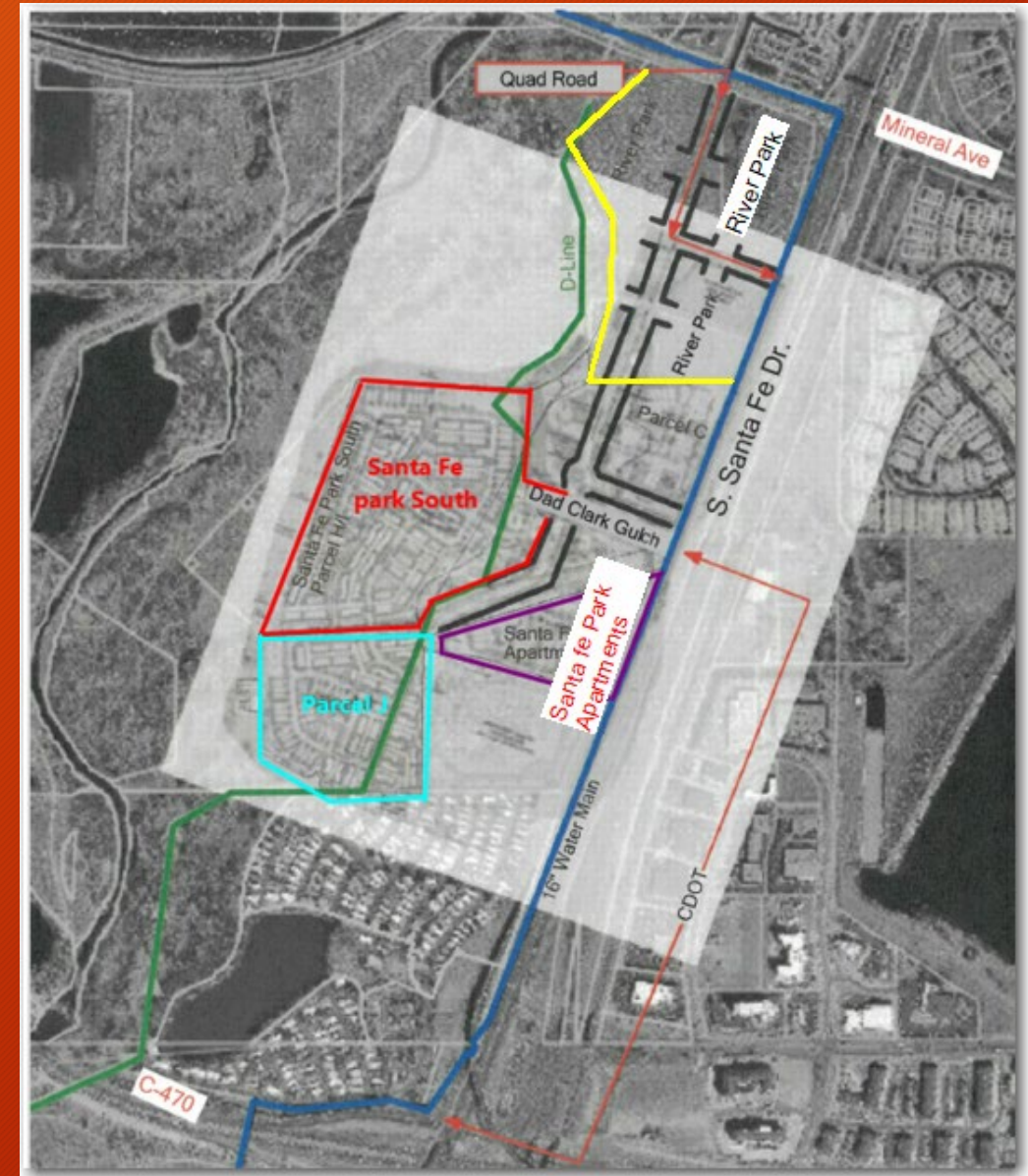
- Engineer preparing to submit water and sewer plans

Santa Fe Park South – Sewer and Water plans in design –

- Sanitary Sewer Variance Withdrawn by engineer – Plans in compliance
- **Water– In Design – #4 Submittal to Staff (#4 with DW – additional fees required)**
- **Sewer – In Design #3 Submittal – Plans more in-line with District Standards RG reviewing plans**
- **SCOPE: Multi Family (336 units) and Townhome (403) Development -**
- **ANTICIPATED TAP REVENUE (South): sewer - \$989,658.00 & water (size TBD) - \$2,140,200.00**



Santa Fe Park South - Overall Site Plan

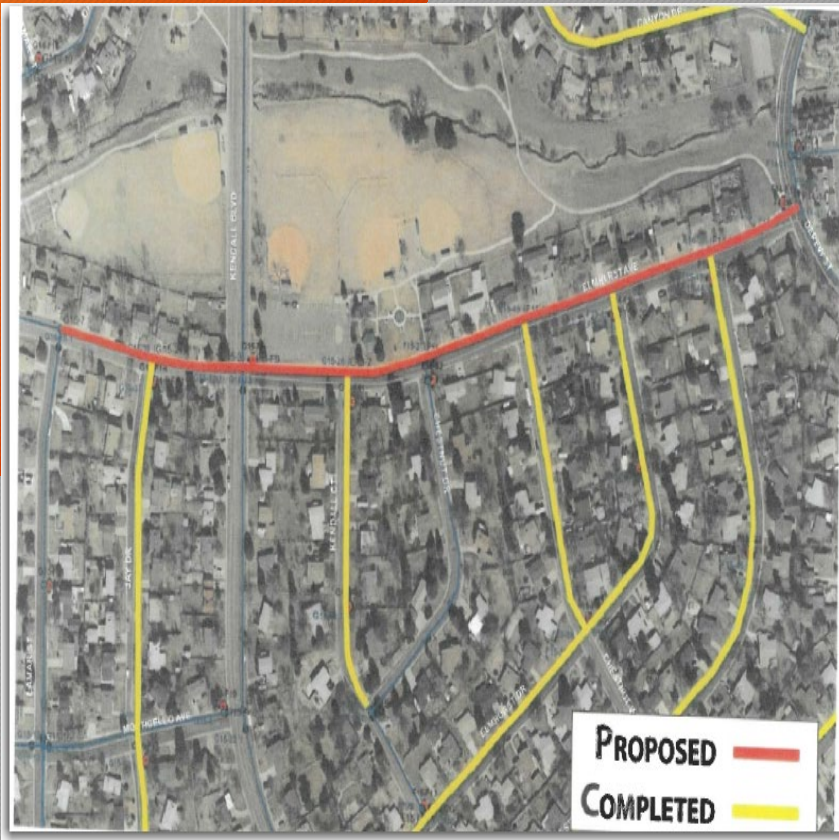


Project Area - River Park, Santa Fe Park South

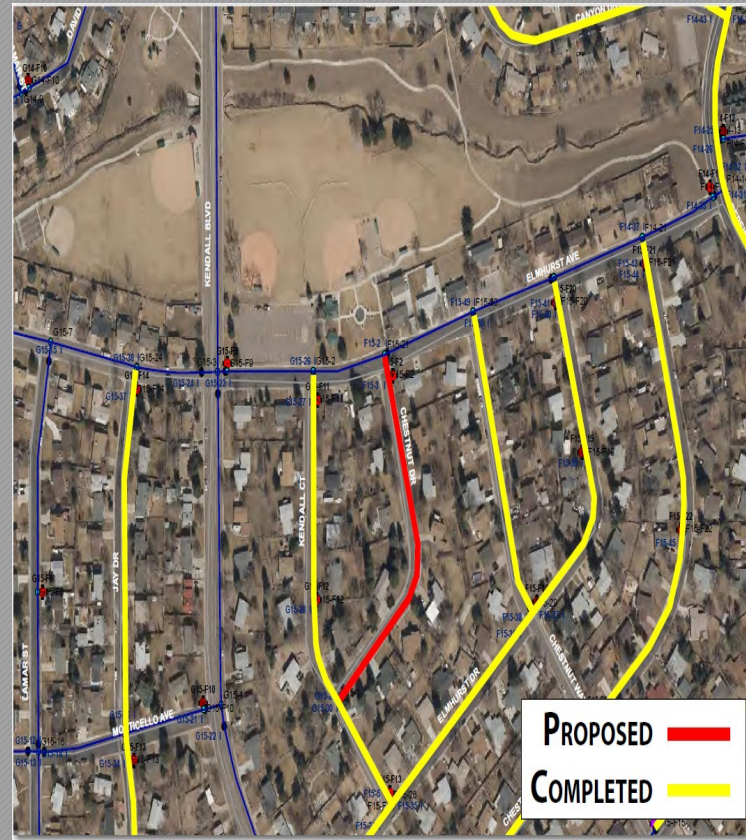
**THE FOLLOWING ARE 2022 CAPITAL PROJECTS IN
DESIGN
and/or
CONSTRUCTION**

➤ Platte Canyon Three Water Projects:

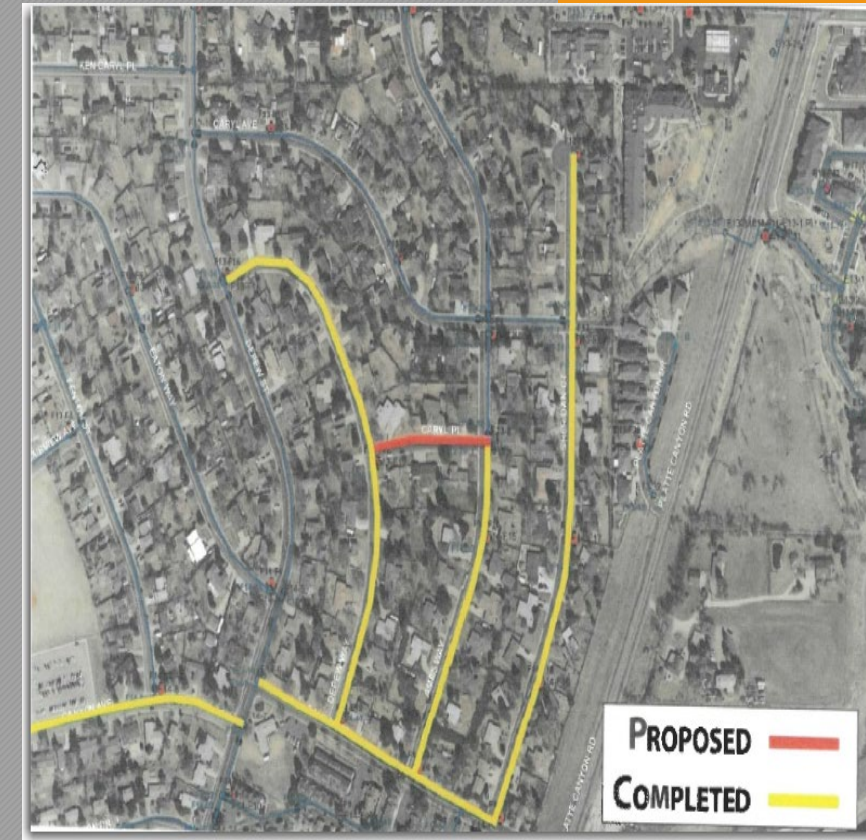
- **Diaz Construction – Low Bid**
- **Schedule – Begin on Caryl PI early June**
- **Planned weekly progress meeting with contractor and Jeffco Paving**



Elmhurst between Lamar and Depew
2300' 12" PVC



Chestnut and Elmhurst
821' 6" PVC

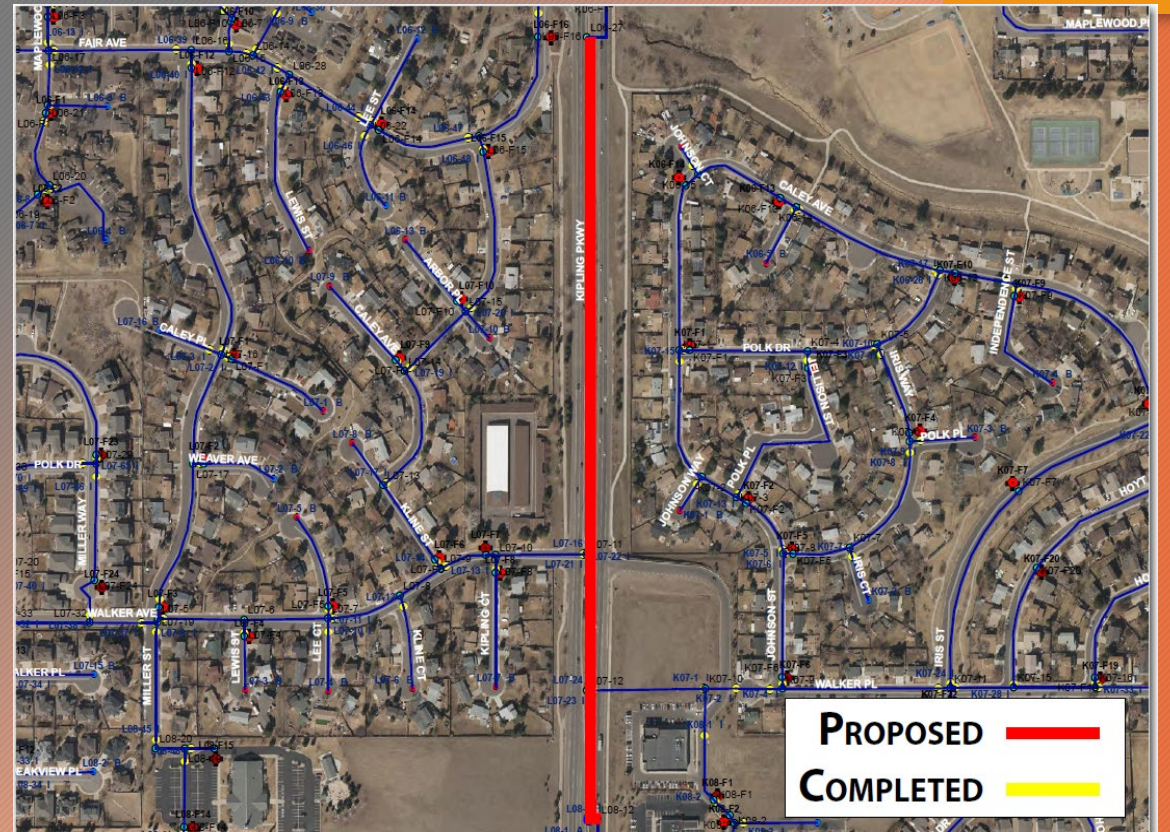


Caryl PI Depew to Ames
404' 6" PVC

- **SWM – Sewer Project – Everitt Way and Peakview Dr**
- Bid received post bid opening by Diamond Contracting
- Notice of Award and Pre-construction meeting - pending SWM Board approval
- **SWM – Water Project – S. Kipling St from W. Coal Mine Ave to W. Fair Ave**
- Bid received post bid opening by Diamond Contracting
- Walked site with contractor , work will involve some night work and extensive traffic control at Coal Mine



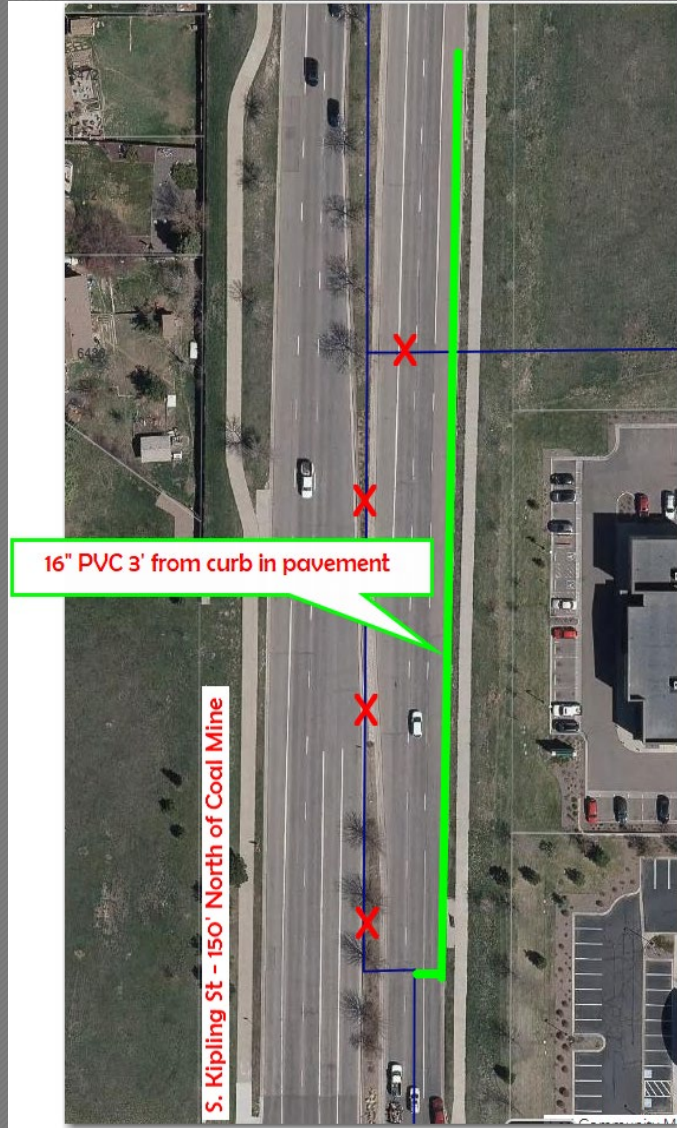
**Everitt Way north of Peakview Dr
Replace 227' of 8" Sewer main**



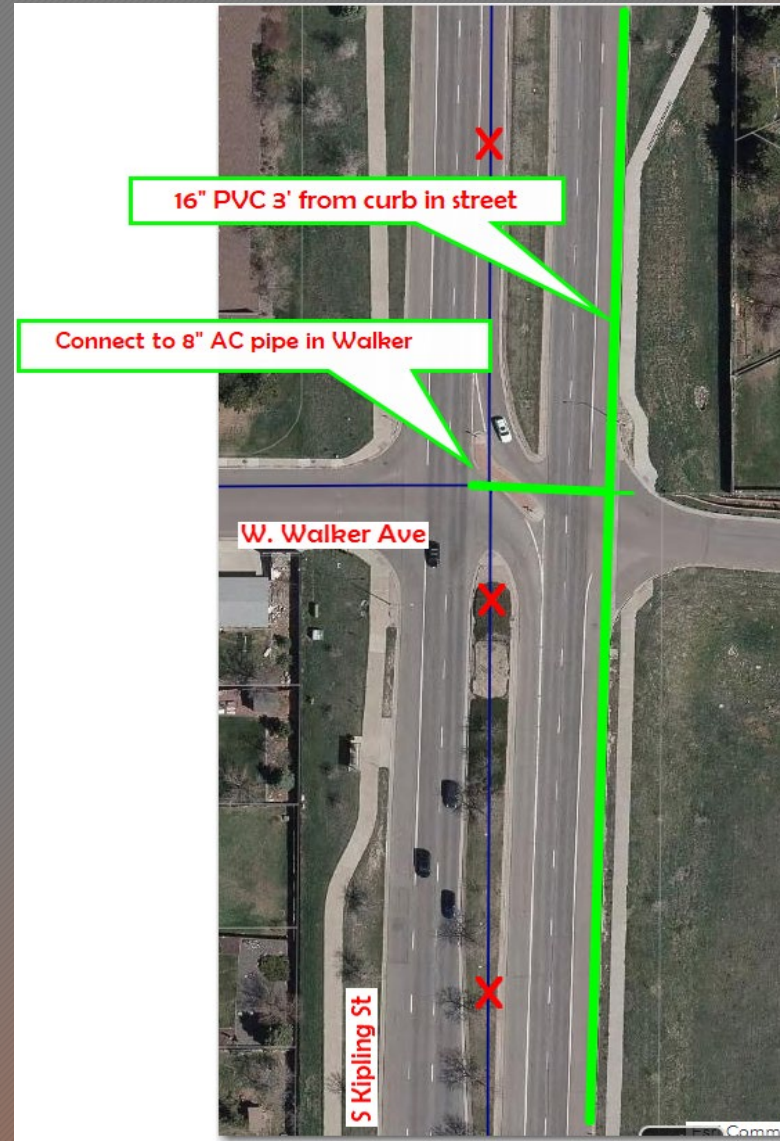
**Kipling from Coal Mine to Fair Ave
Replace 2340' of 16" Water Main**

➤ SWM – 16" Water Layout in S. Kipling St.

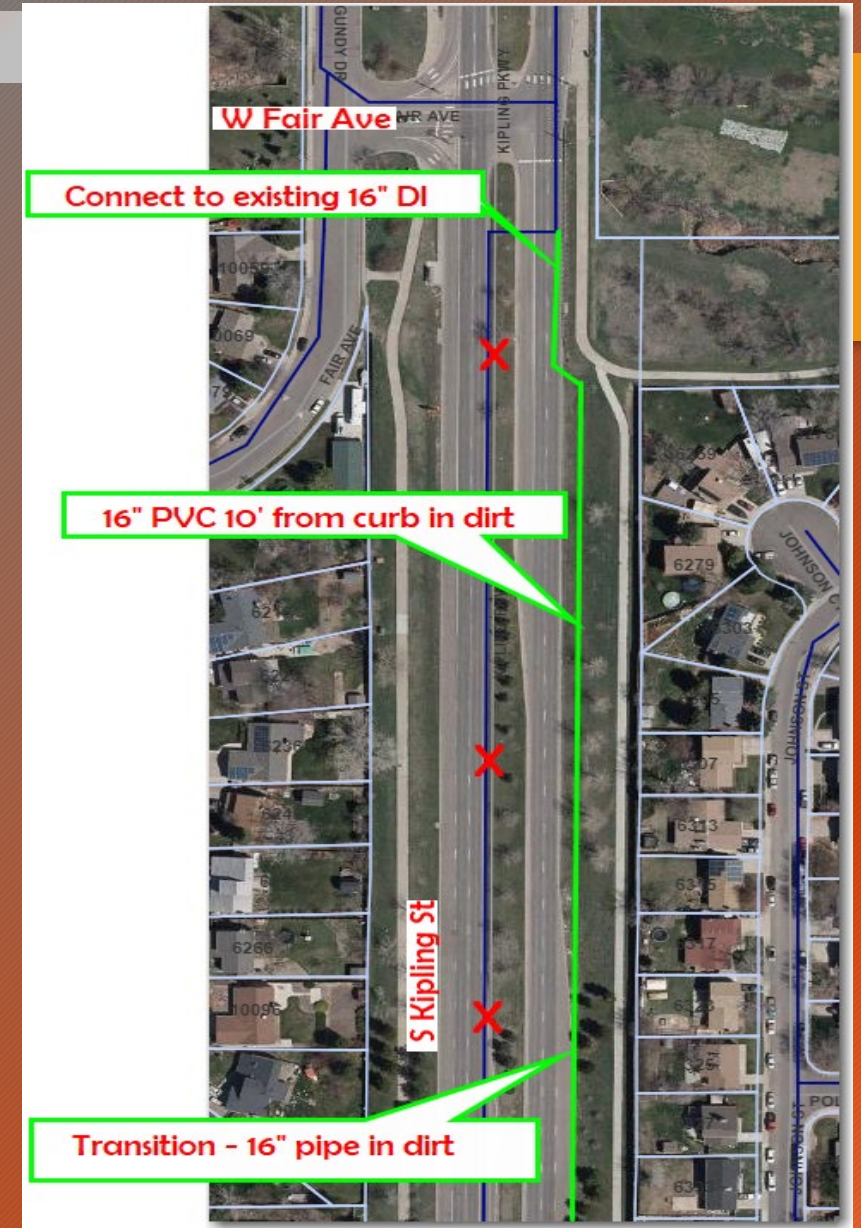
- Minimized Traffic Impact – safety and cost



Kipling - Coal Mine to the north



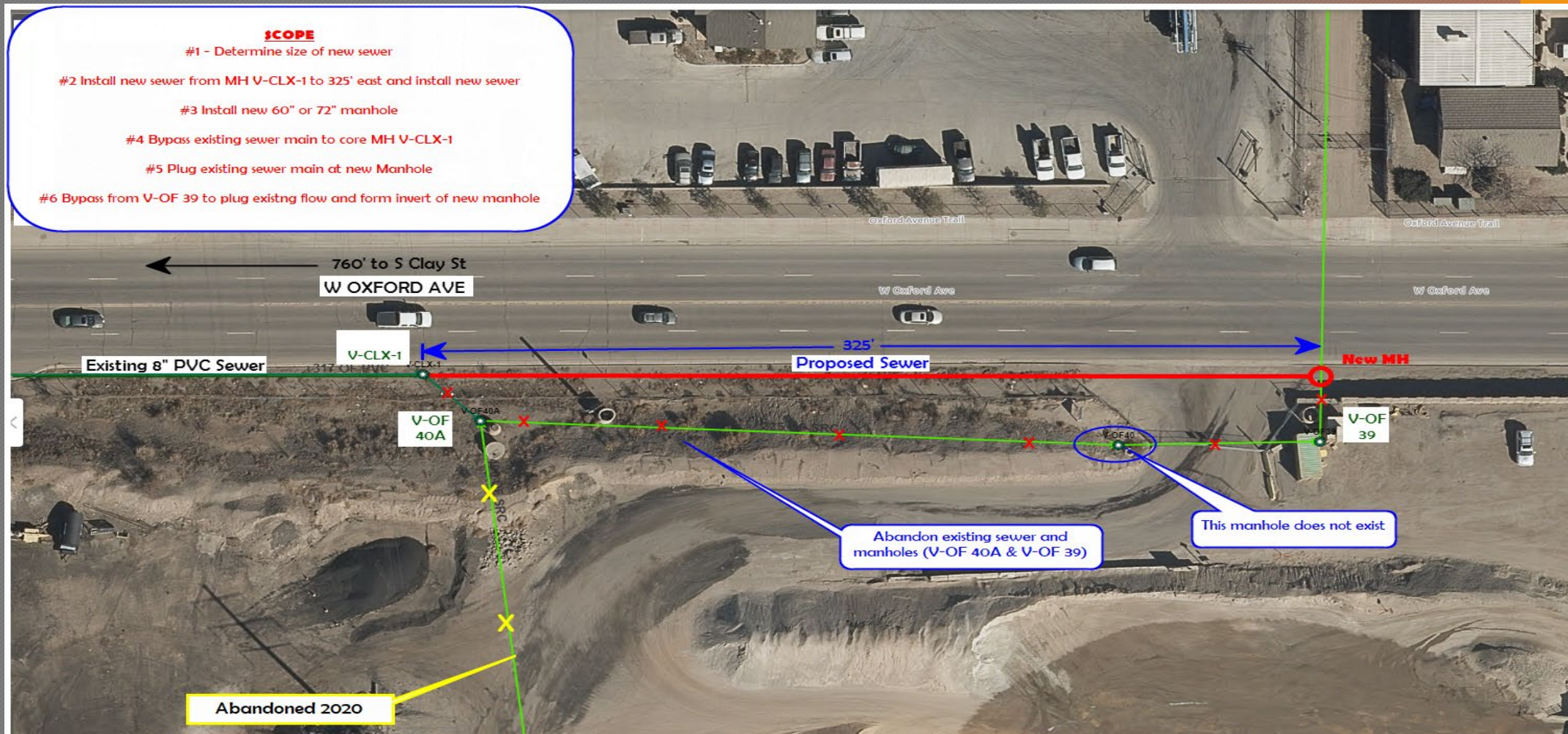
Kipling – Connection at Walker



Kipling – Connection at Fair

➤ Valley – Sewer Replacement – North of Kent Property

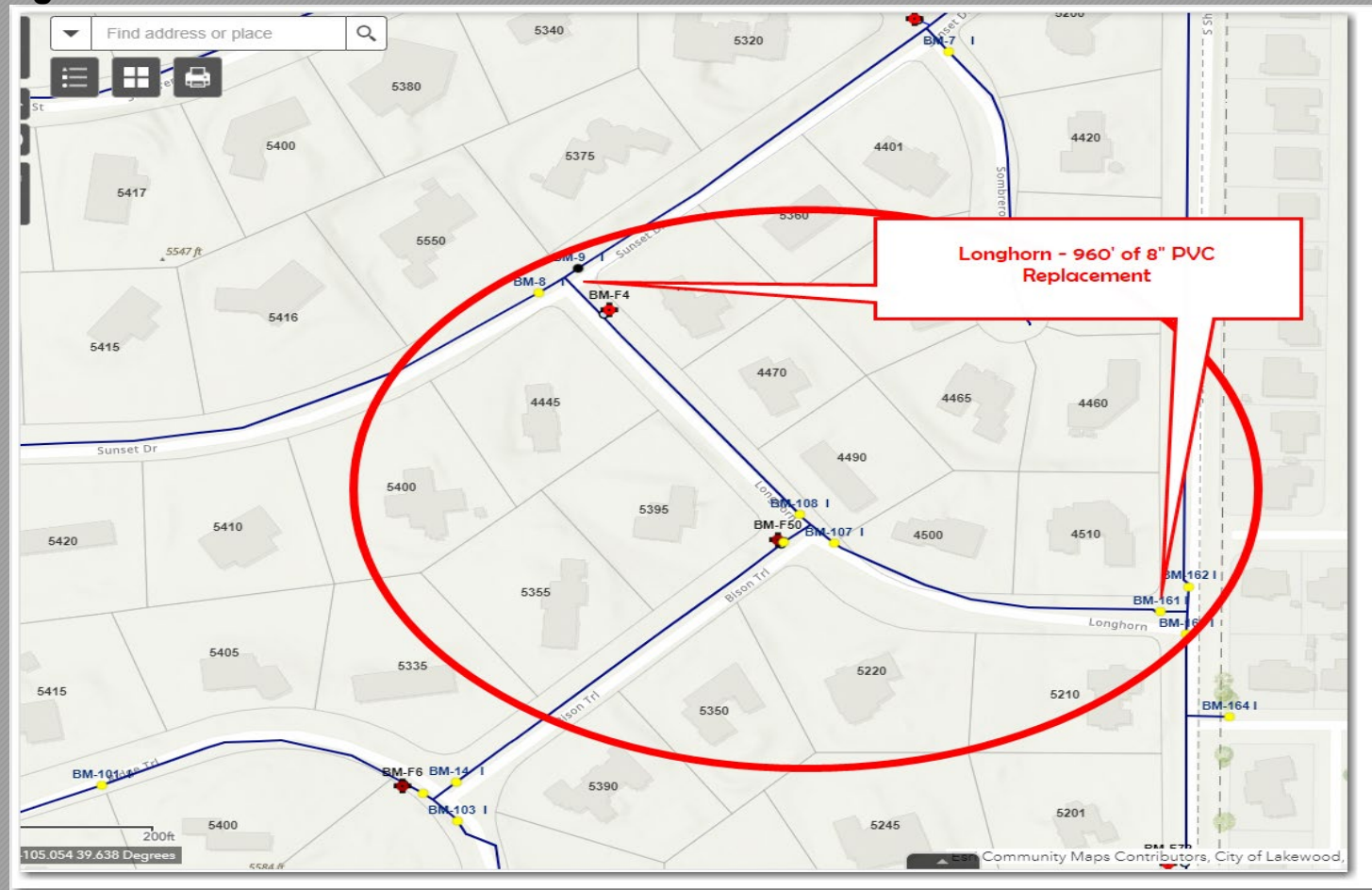
➤ Project design with RG



CONCEPTUAL PLAN

➤ Bow Mar – 1 Water Project

- Levi Contractors (Bill King)
- Schedule pending



Longhorn – Sunset to Sheridan

QUESTIONS?