



WATER WATCH REPORT

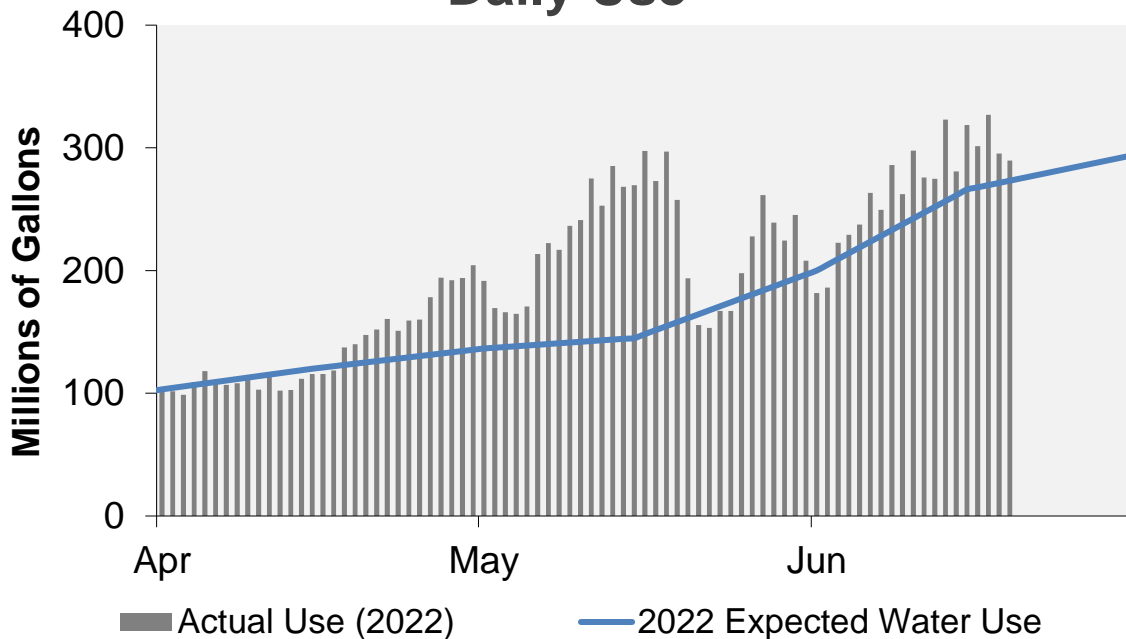
June 20, 2022

Supply Reservoir Contents

Reservoir	Capacity		Current Usable Contents (acre-feet)	Percent Full		
	(acre-feet)			Last Year	Historical Median	
	Total	Usable	Current			
Antero	20,122	20,067	20,108	100%	99%	100%
Eleven Mile	97,779	97,779	99,280	102%	101%	102%
Cheesman	79,064	79,064	68,487	87%	90%	97%
Marston	19,108	13,133	8,277	63%	71%	76%
Strontia Springs	7,863	7,163	6,274	88%	81%	94%
Chatfield	28,709	12,415	3,098	25%	75%	85%
Dillon	257,304	249,095	236,216	95%	98%	98%
Gross*	41,811	29,811	15,800	53%	96%	86%
Ralston	10,776	7,276	6,595	91%	62%	91%
Meadow Creek	5,370	4,520	4,684	104%	91%	73%
Total	567,906	520,323	468,819	90%	95%	94%

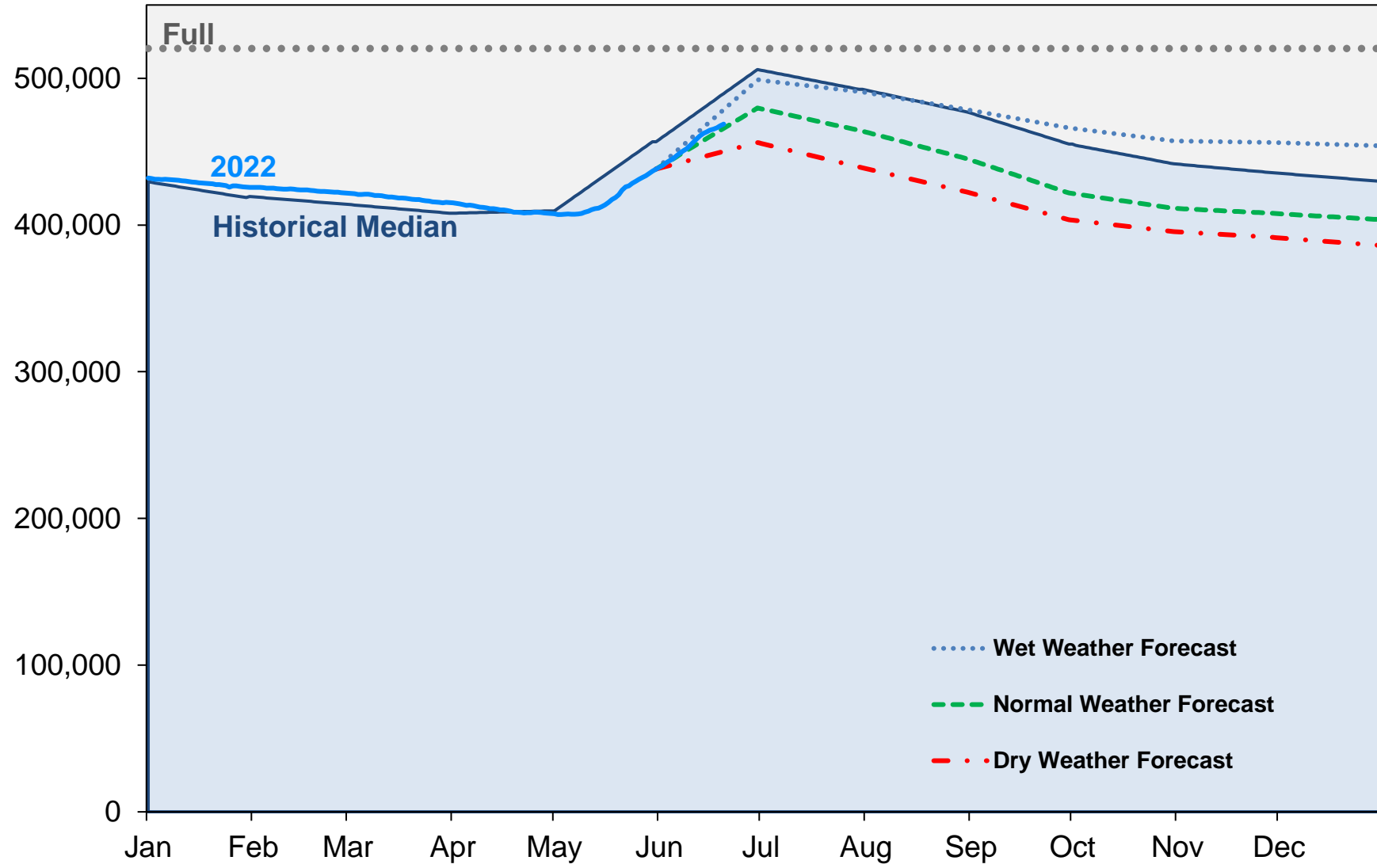
*Gross Reservoir storage is limited to 29,938 acre feet in total storage during construction activities. The percent full figures are based on the normal usable capacity of 29,811 acre feet.

Daily Use



Supply Reservoir Contents

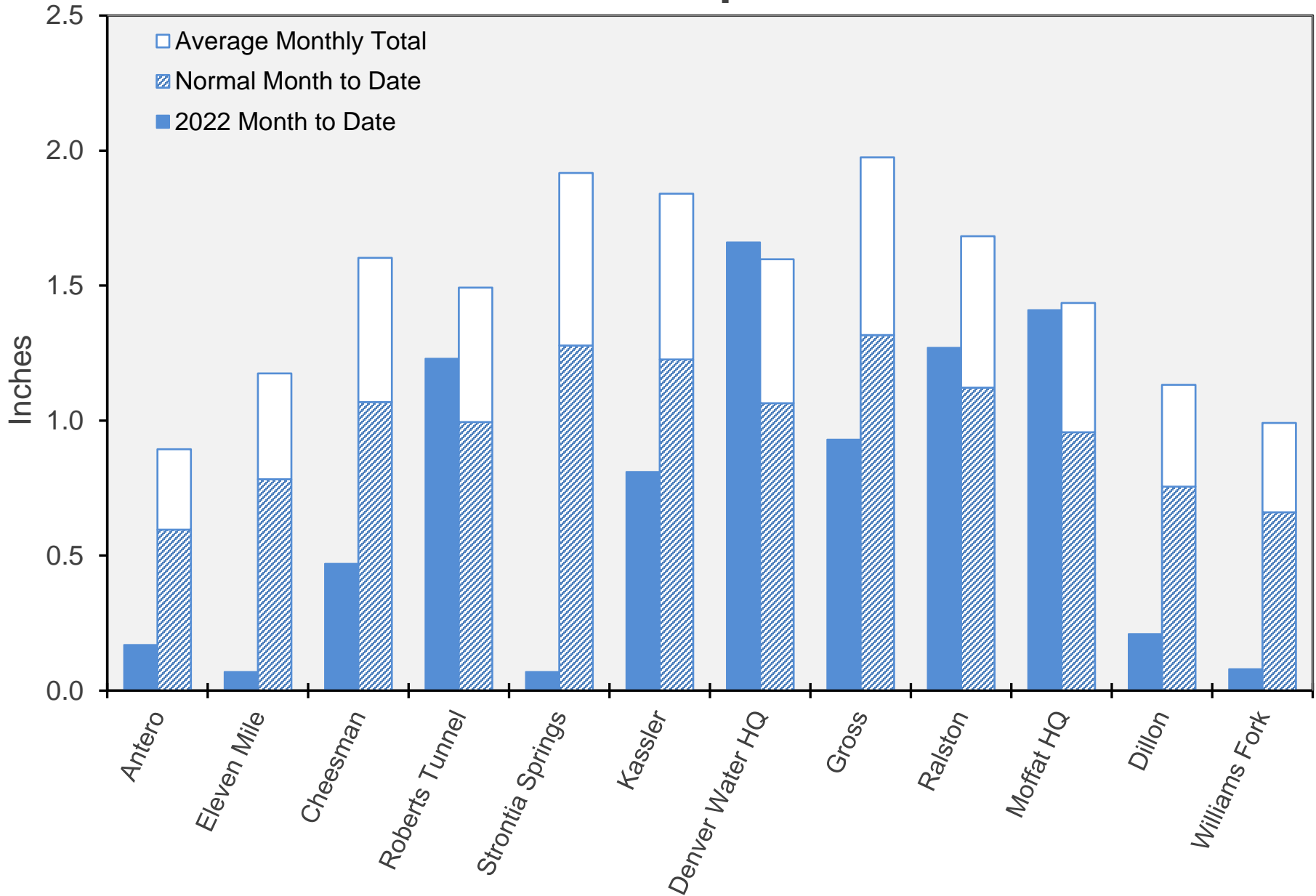
Acre-Feet



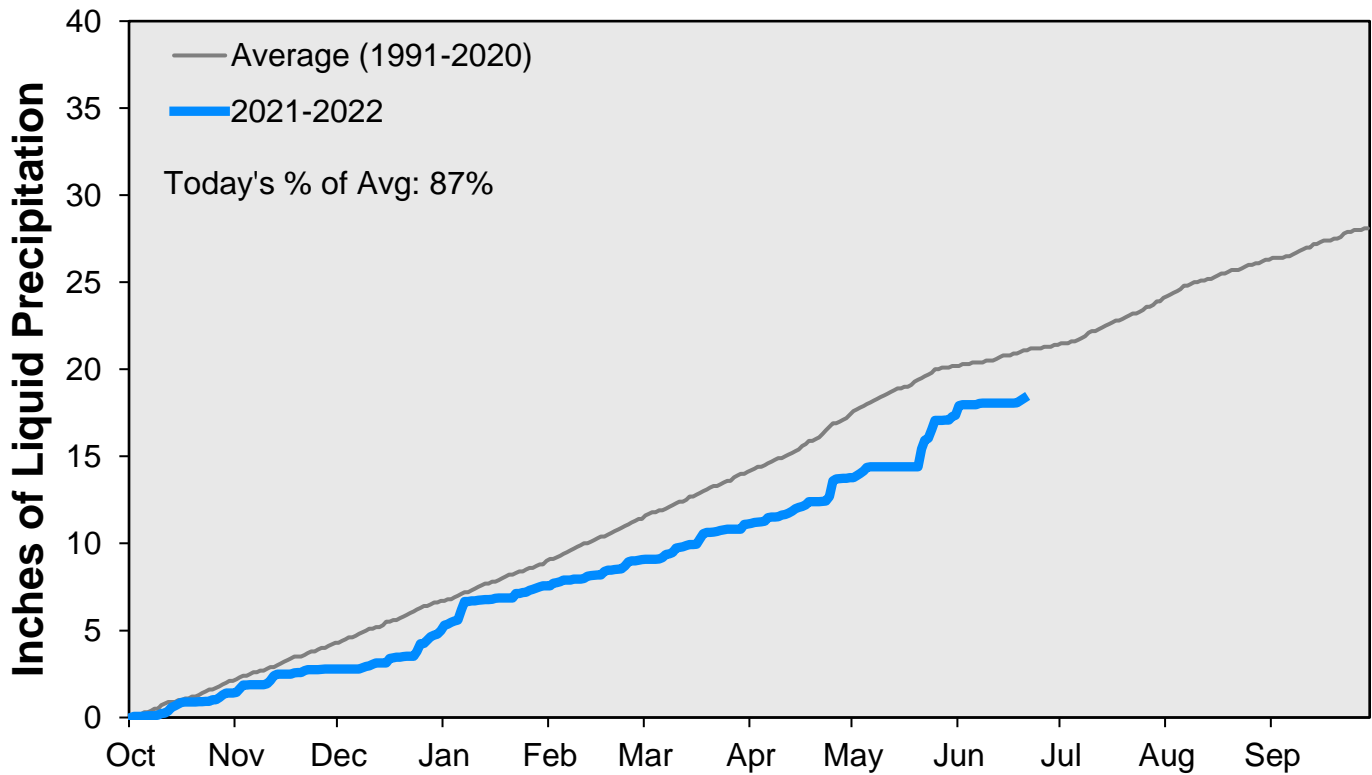
Note: Denver Water forecasts seasonal reservoir storage contents under dry future weather, normal future weather and wet future weather scenarios.

Gross Reservoir storage is limited to 29,938 acre feet in total storage during construction activities. The percent full figures are based on the normal usable capacity of 29,811 acre feet.

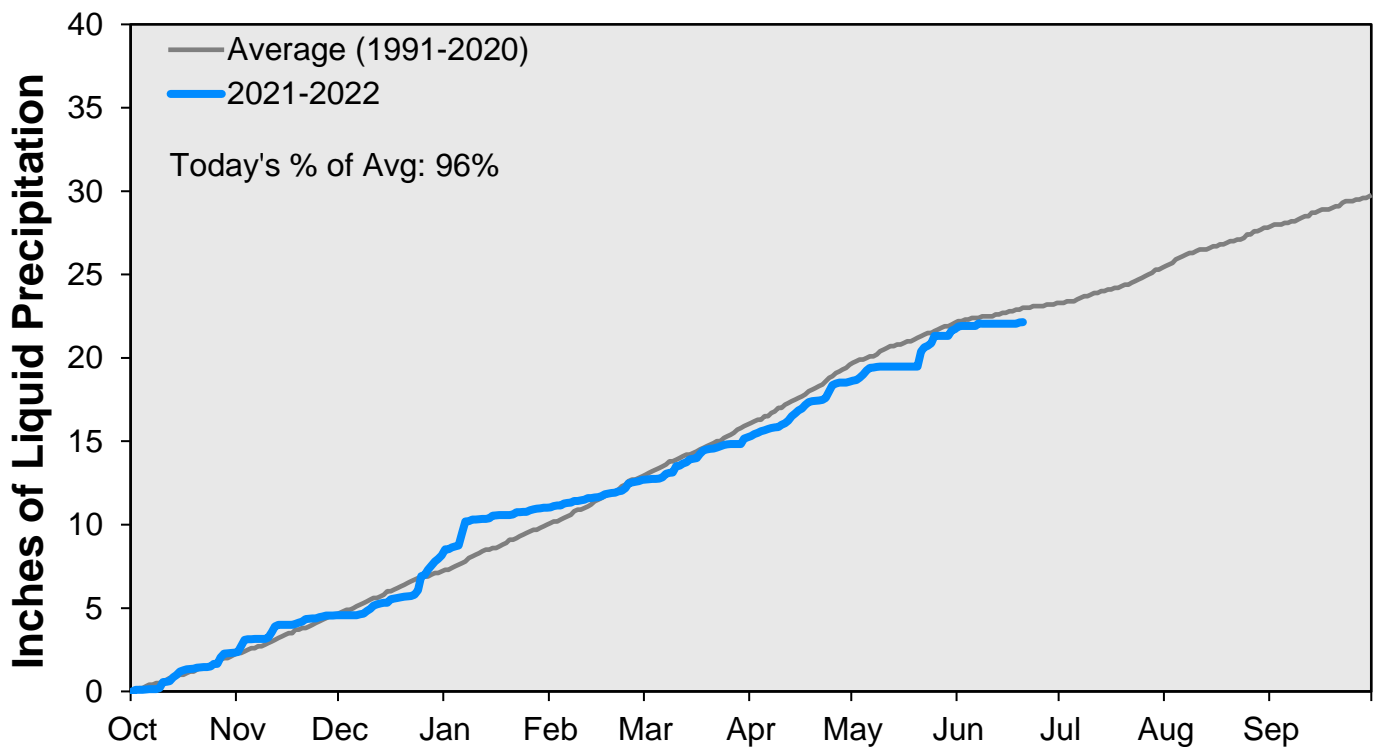
June Precipitation



CUMULATIVE PRECIPITATION: SOUTH PLATTE RIVER WATERSHED

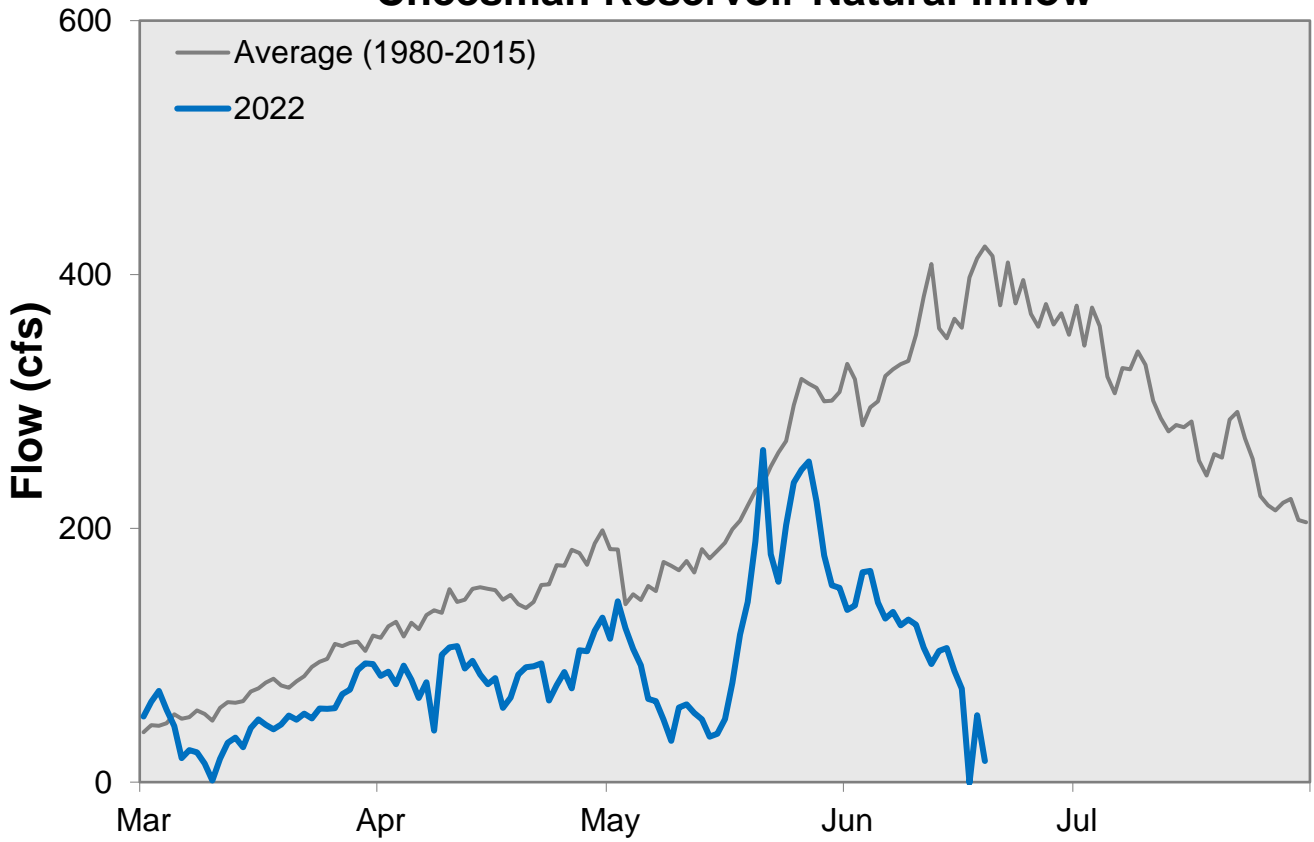


CUMULATIVE PRECIPITATION: COLORADO RIVER WATERSHED

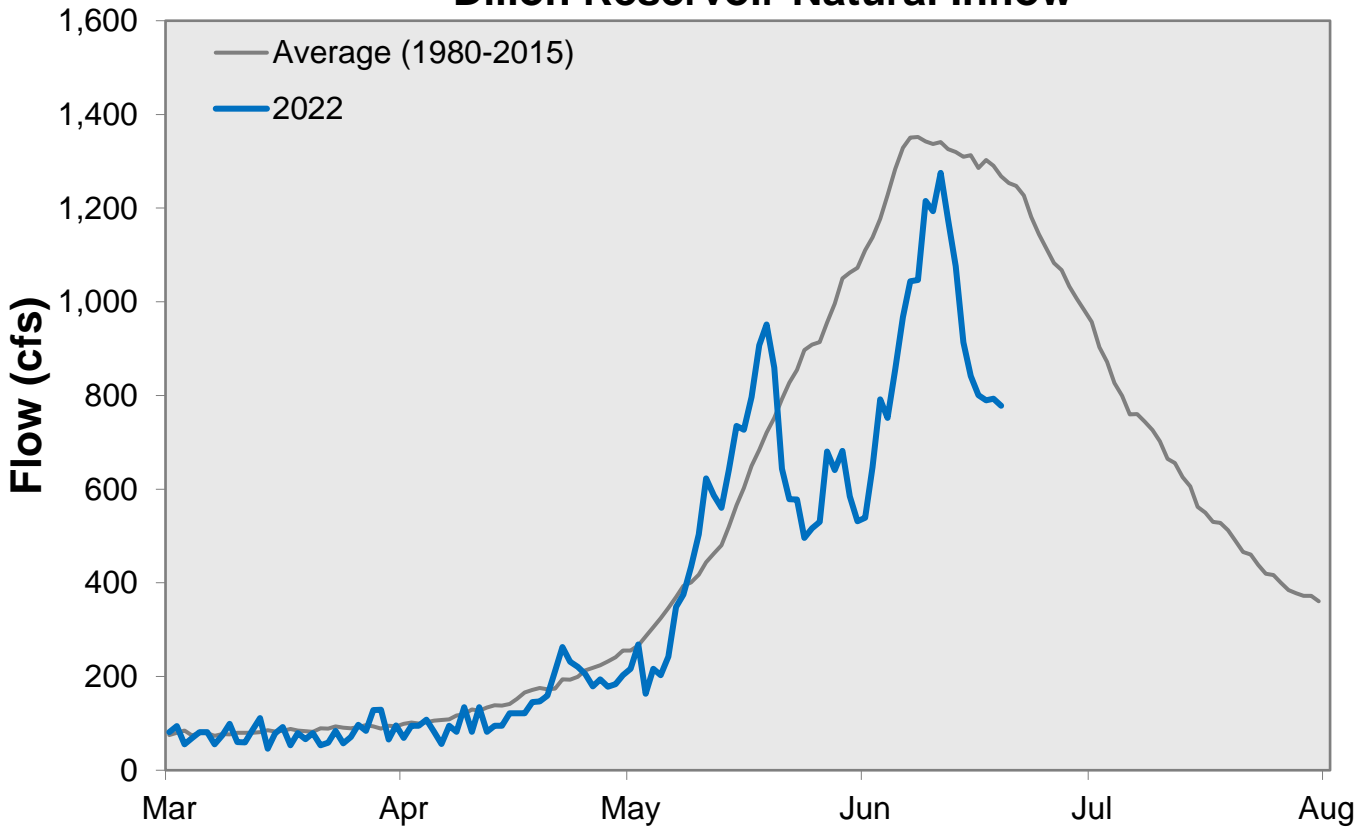


Data are from the 7 SNOTEL stations above Denver Water's Upper Colorado diversion facilities.

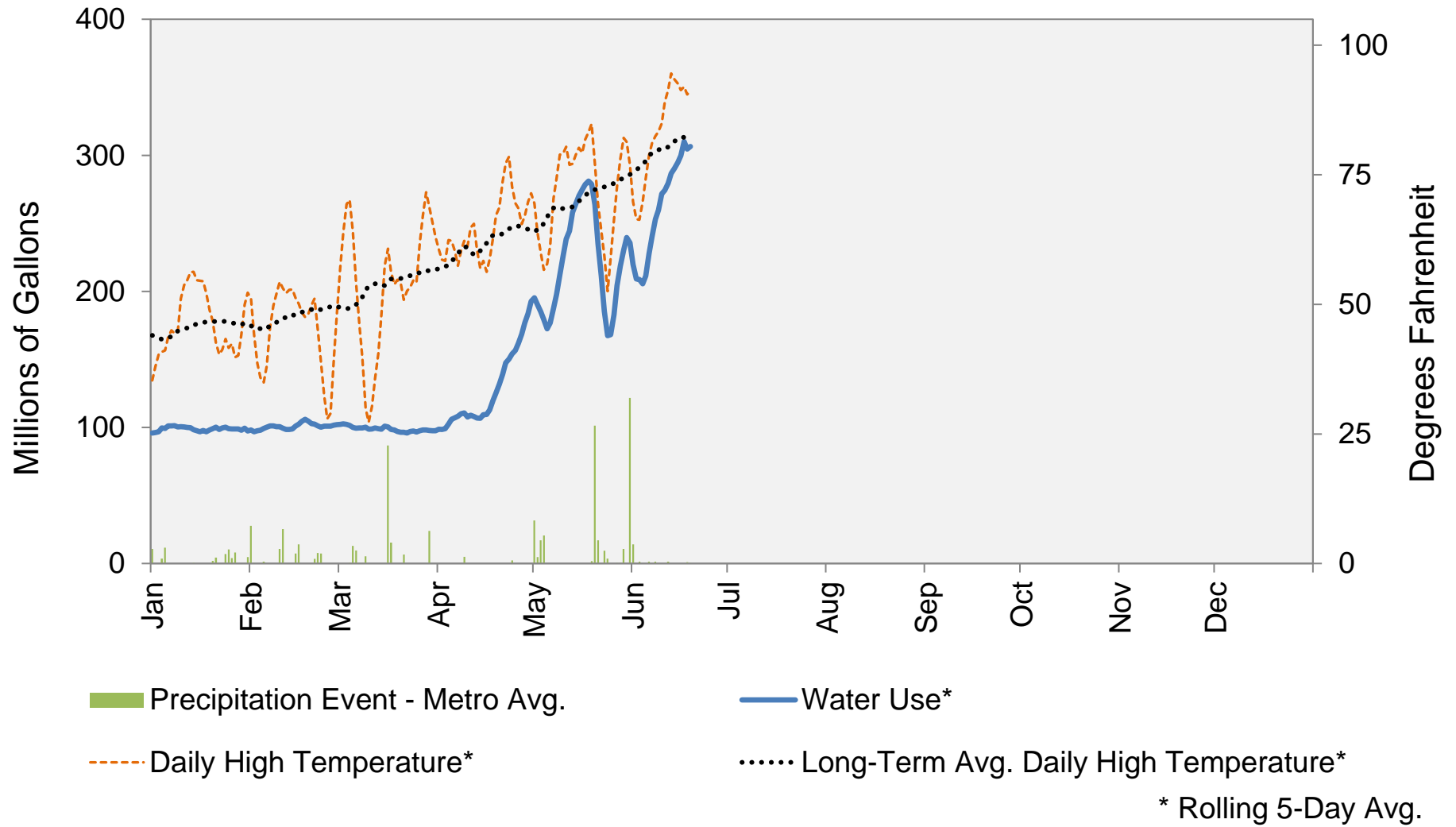
Cheesman Reservoir Natural Inflow



Dillon Reservoir Natural Inflow



2022 Water Use and Weather Conditions



June 20, 2022

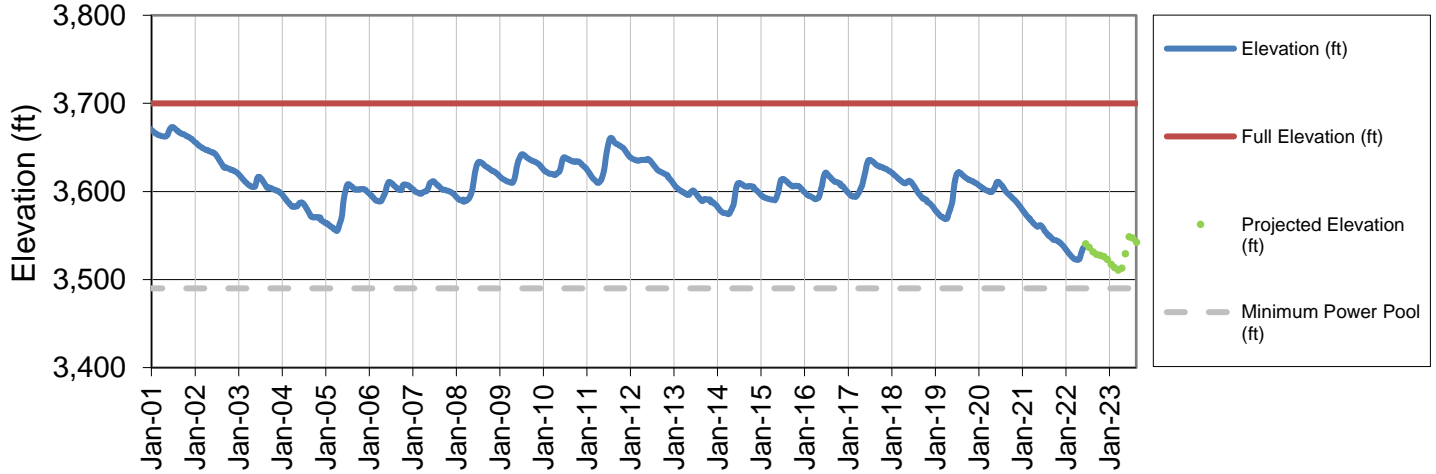
Denver Water Use and Reservoir Contents 2022

	Jan	Feb	Mar	Apr	May	Jun	Jul	Aug	Sep	Oct	Nov	Dec	YTD-Avg
Predicted End-of-Month Supply Reservoir Contents (Full = 518,449 AF)	471,000												
Actual End-of-Month Supply Reservoir Contents (AF)	425,595	421,903	415,083	407,905	438,115								
Actual % Full	82%	81%	80%	79%	85%								
Historical Median % Full	81%	80%	79%	79%	88%	98%	95%	92%	88%	85%	84%	83%	
2022 Expected Daily Use (MG)	105	104	102	120	157	257	298	292	270	158	105	101	133
Actual Daily Use (MG)	1	92	98	102	102	192	182						
	2	100	95	101	102	169	186						
	3	100	100	101	99	166	223						
	4	105	105	100	109	165	229						
	5	99	97	95	118	171	237						
	6	101	103	100	108	214	263						
	7	100	100	102	107	222	250						
	8	101	100	101	108	217	286						
	9	101	102	103	112	236	262						
	D 10	99	98	88	103	241	298						
	A 11	100	97	100	115	275	276						
	Y 12	98	96	105	102	253	275						
		13	101	99	98	103	285	323					
	O 14	93	105	102	112	268	281						
	F 15	96	108	99	116	269	319						
		16	96	105	97	116	297	301					
	M 17	103	106	96	118	273	327						
	O 18	96	106	97	137	297	295						
	N 19	100	98	96	140	257	290						
	T 20	100	99	97	148	194							
	H 21	102	102	96	152	156							
		22	95	100	94	160	153						
		23	102	102	102	151	167						
		24	102	102	98	159	167						
		25	95	99	93	160	198						
		26	101	103	101	178	228						
		27	94	104	97	194	262						
		28	103	103	102	192	239						
		29	96		96	194	224						
		30	102		92	204	245						
		31	91		101	208							
Monthly Average	99	101	98	134	223	269							147
% of 2022 Expected Daily Use	94%	97%	97%	112%	142%	104%							110%

Notes: 1) "AF" denotes acre-feet. "MG" denotes million gallons. 2) Expected Daily Use is based on historical use with normal weather conditions. 3) The predicted end-of-month supply reservoir contents figures assume normal weather after June 6th, 2022. 4) The differences between predicted and actual end-of-month supply reservoir contents are the result of normal estimation error of daily use, supply, evaporation, carriage losses and raw water deliveries. 5) Predicted supply reservoir contents last updated on June 6th, 2022. 6) Daily water figures are subject to change.

Lake Powell Report*

Lake Powell Elevation (2001-Current)



* Denver Water gets half of its water supply from the Colorado River and closely monitors conditions at Lake Powell and within the greater Colorado River Basin.