



WATER WATCH REPORT

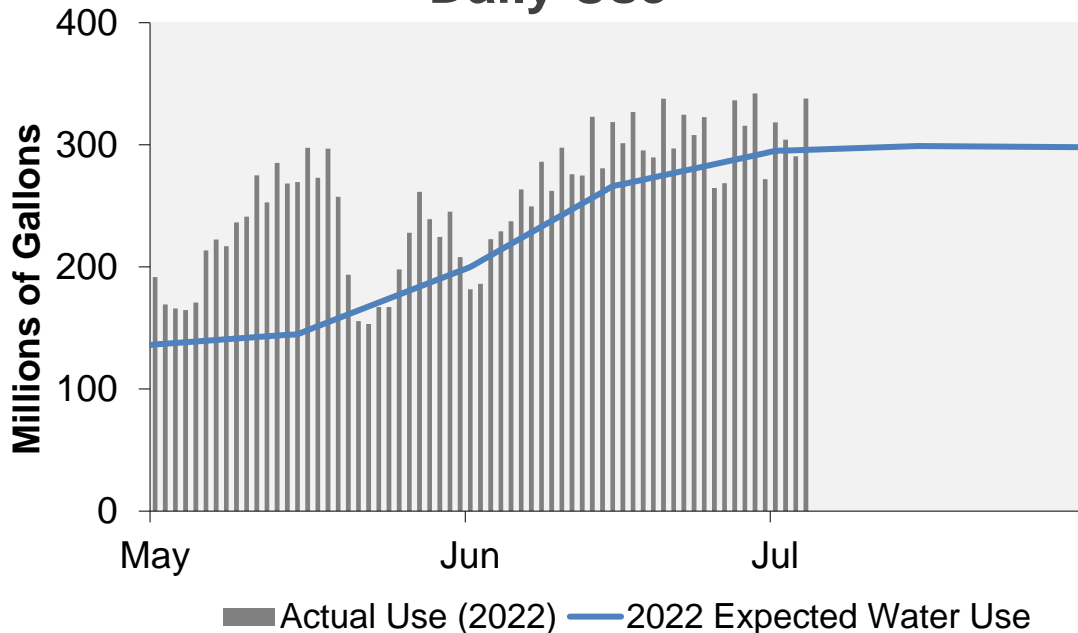
July 5, 2022

Supply Reservoir Contents

Reservoir	Capacity		Current Usable Contents (acre-feet)	Percent Full		
	(acre-feet)			Current	Last	Historical
	Total	Usable	Year		Median	
Antero	20,122	20,067	20,283	101%	99%	100%
Eleven Mile	97,779	97,779	100,969	103%	103%	103%
Cheesman	79,064	79,064	71,512	90%	96%	99%
Marston	19,108	13,133	9,117	69%	69%	76%
Strontia Springs	7,863	7,163	5,982	84%	87%	95%
Chatfield	28,709	12,415	2,698	22%	62%	80%
Dillon	257,304	249,095	238,850	96%	101%	101%
Gross*	41,811	29,811	16,284	55%	97%	98%
Ralston	10,776	7,276	6,796	93%	84%	93%
Meadow Creek	5,370	4,520	4,570	101%	88%	91%
Total	567,906	520,323	477,061	92%	98%	97%

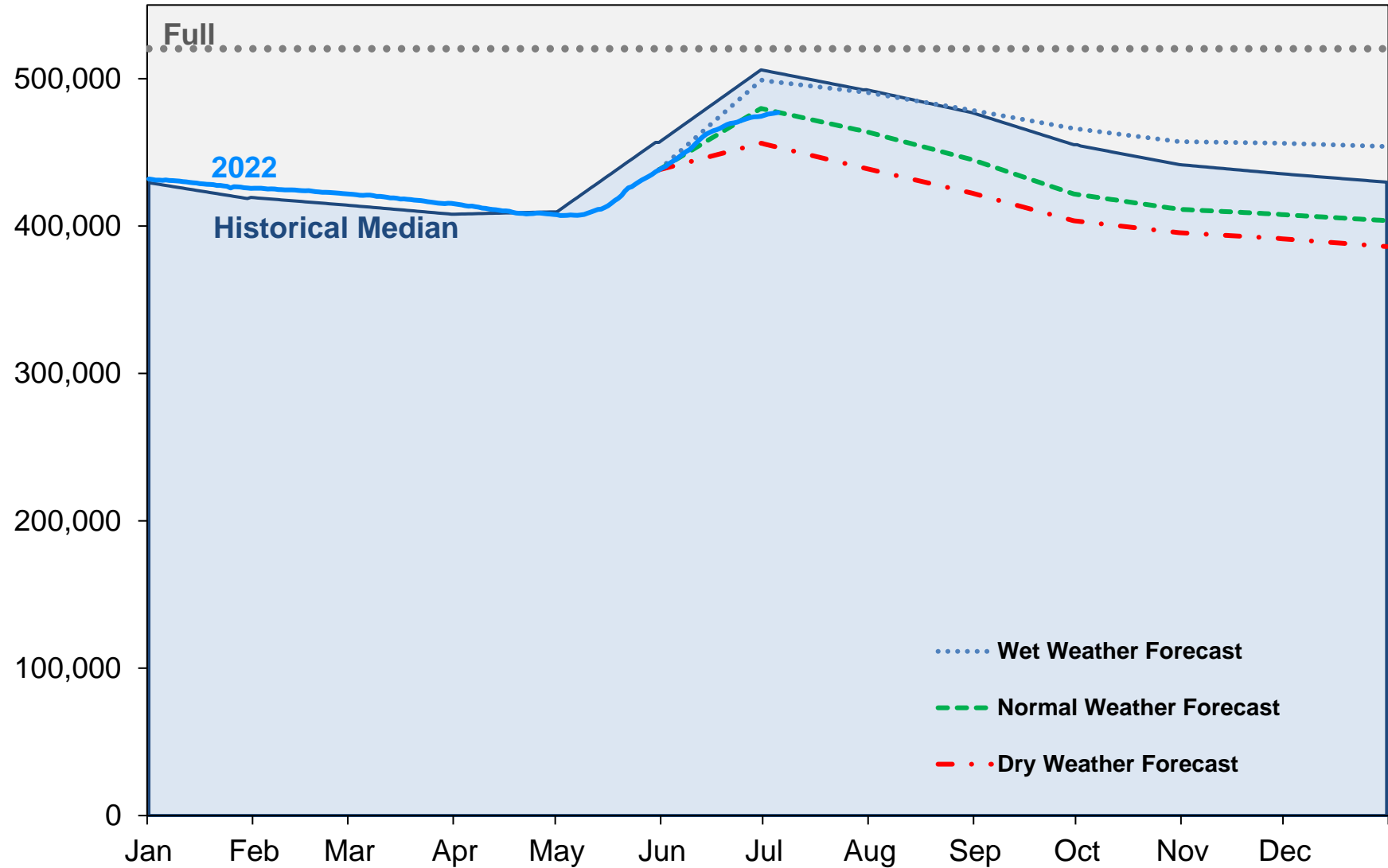
*Gross Reservoir storage is limited to 29,938 acre feet in total storage during construction activities. The percent full figures are based on the normal usable capacity of 29,811 acre feet.

Daily Use



Supply Reservoir Contents

Acre-Feet

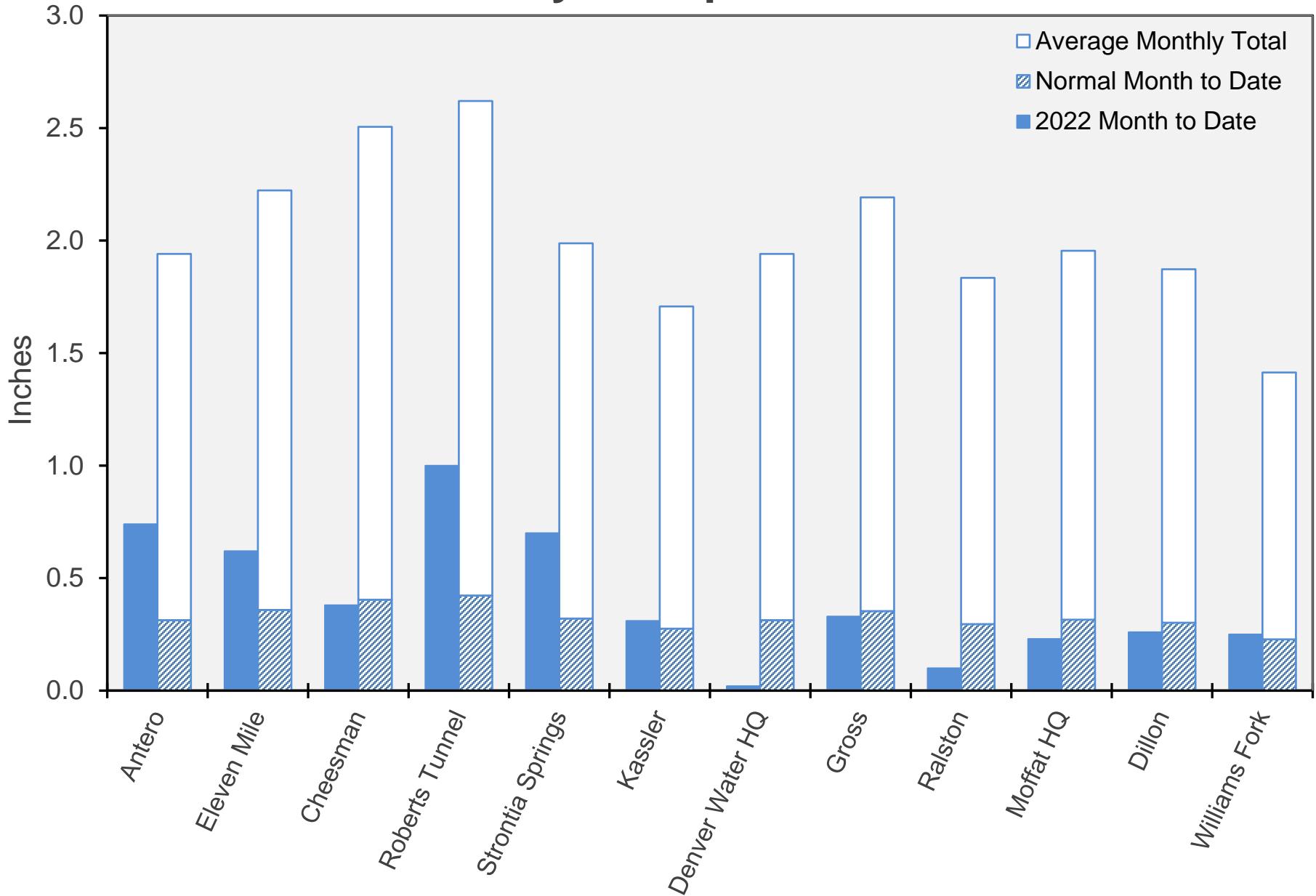


Note: Denver Water forecasts seasonal reservoir storage contents under dry future weather, normal future weather and wet future weather scenarios.

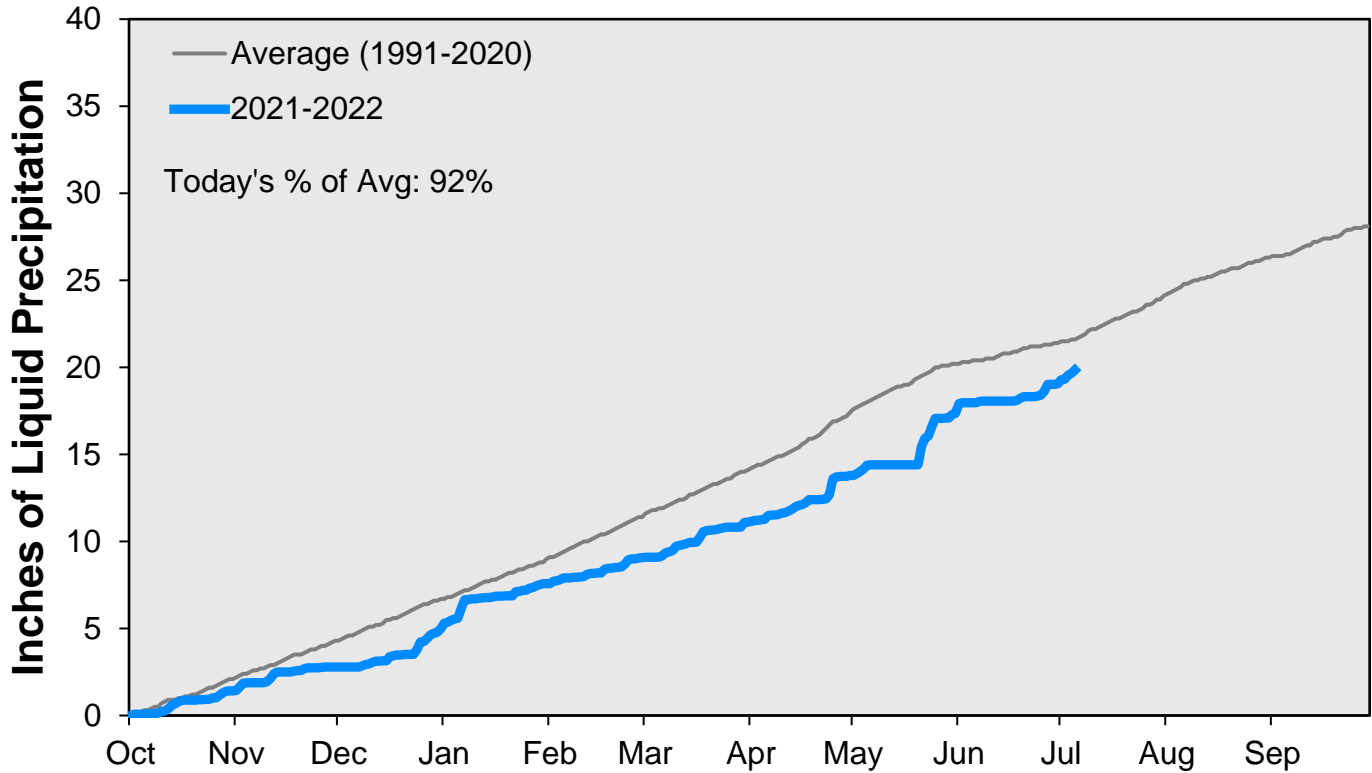
Gross Reservoir storage is limited to 29,938 acre feet in total storage during construction activities. The percent full figures are based on the normal usable capacity of 29,811 acre feet.

July 5, 2022

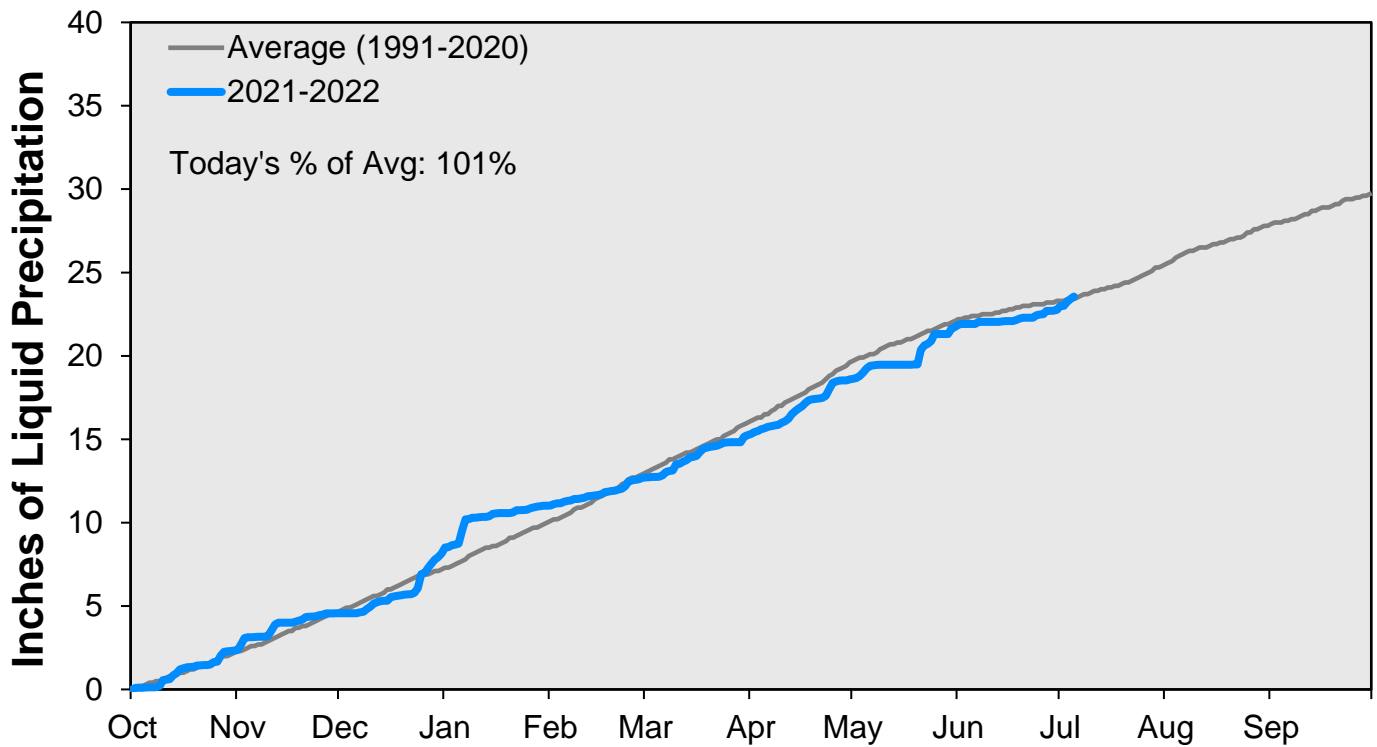
July Precipitation



CUMULATIVE PRECIPITATION: SOUTH PLATTE RIVER WATERSHED

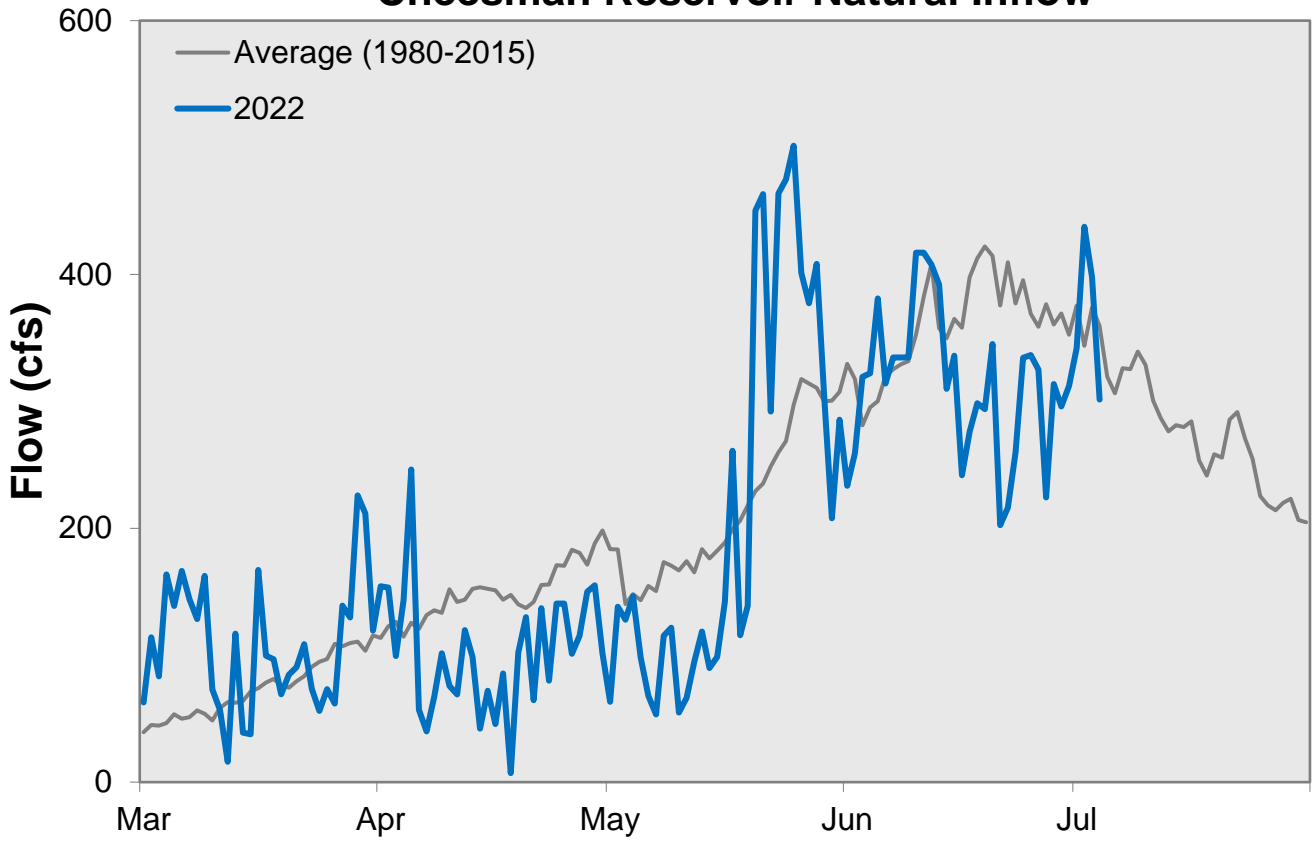


CUMULATIVE PRECIPITATION: COLORADO RIVER WATERSHED

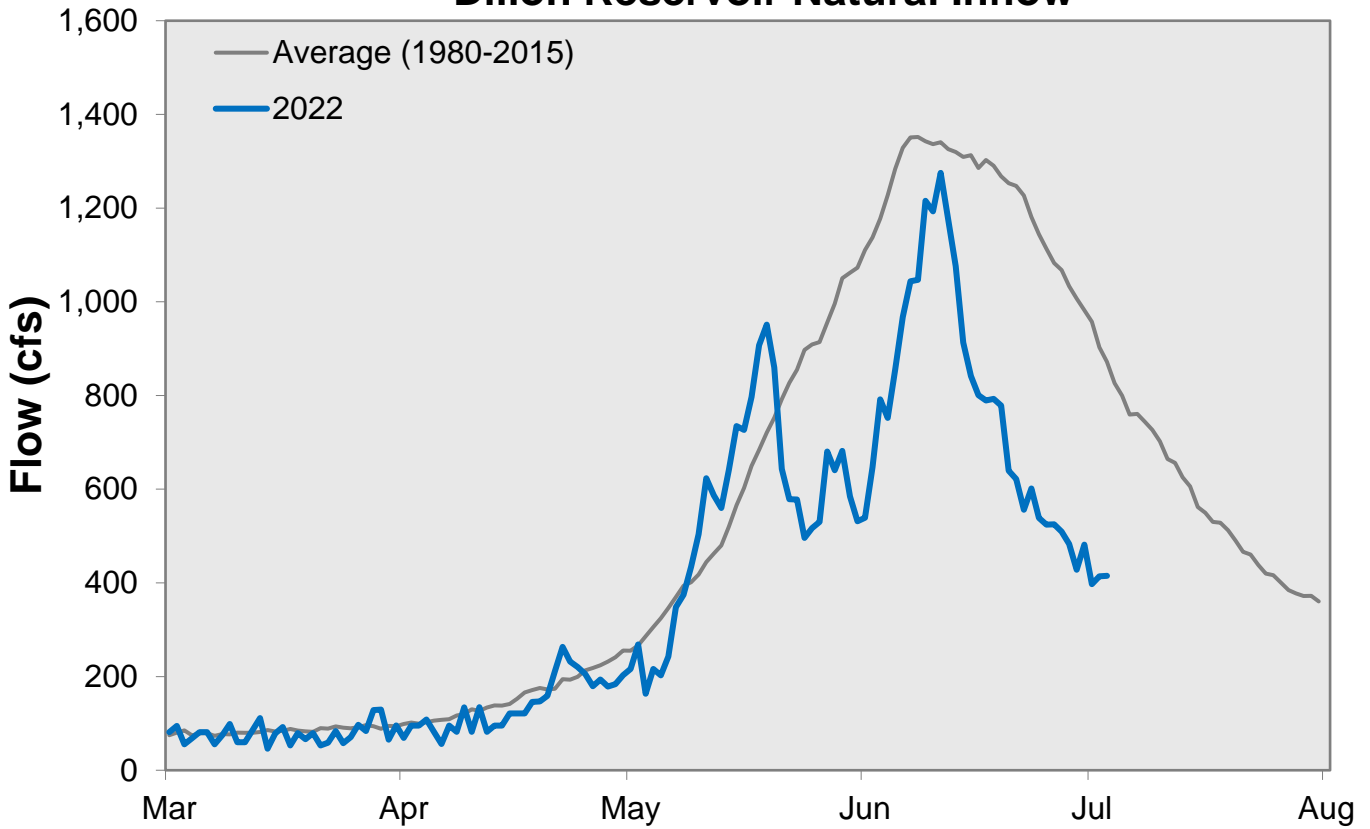


Data are from the 7 SNOTEL stations above Denver Water's Upper Colorado diversion facilities.

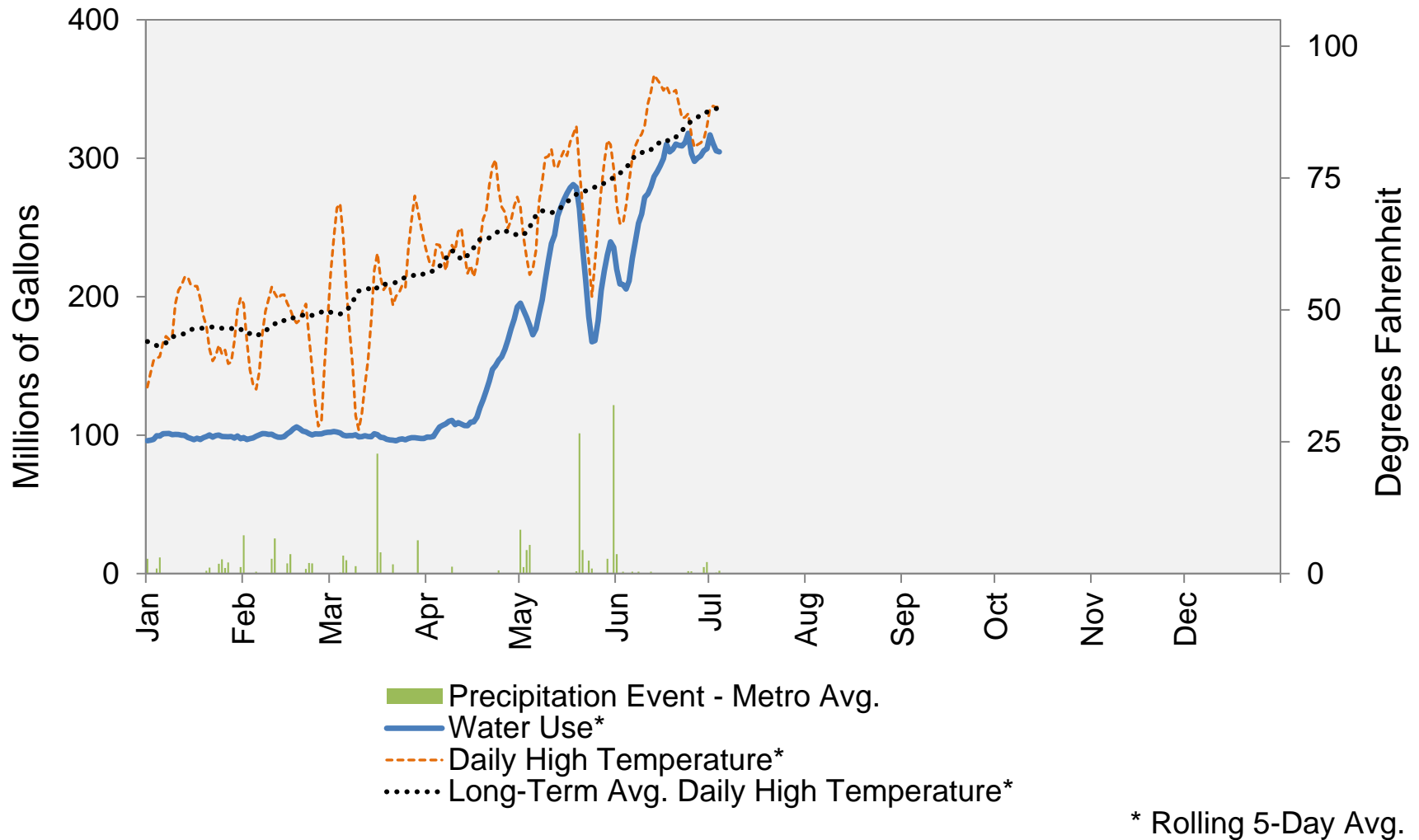
Cheesman Reservoir Natural Inflow



Dillon Reservoir Natural Inflow



2022 Water Use and Weather Conditions



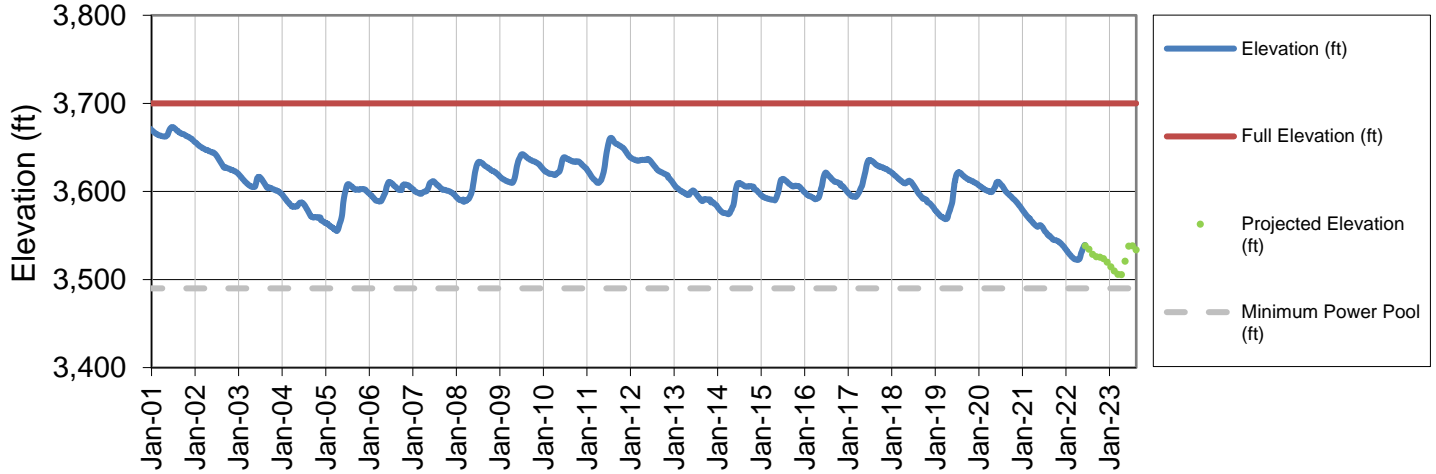
July 5, 2022

Denver Water Use and Reservoir Contents 2022													
	Jan	Feb	Mar	Apr	May	Jun	Jul	Aug	Sep	Oct	Nov	Dec	YTD-Avg
Predicted End-of-Month Supply Reservoir Contents (Full = 518,449 AF)	469,700												
Actual End-of-Month Supply Reservoir Contents (AF)	425,595	421,903	415,083	407,905	438,115	474,473							
Actual % Full	82%	81%	80%	79%	85%	92%							
Historical Median % Full	81%	80%	79%	79%	88%	98%	95%	92%	88%	85%	84%	83%	
2022 Expected Daily Use (MG)	105	104	102	120	157	257	298	292	270	158	105	101	144
Actual Daily Use (MG)	1	92	98	102	102	192	182	318					
	2	100	95	101	102	169	186	304					
	3	100	100	101	99	166	223	291					
	4	105	105	100	109	165	229	338					
	5	99	97	95	118	171	237						
	6	101	103	100	108	214	263						
	7	100	100	102	107	222	250						
	8	101	100	101	108	217	286						
	9	101	102	103	112	236	262						
	D 10	99	98	88	103	241	298						
	A 11	100	97	100	115	275	276						
	Y 12	98	96	105	102	253	275						
	13	101	99	98	103	285	323						
	O 14	93	105	102	112	268	281						
	F 15	96	108	99	116	269	319						
	16	96	105	97	116	297	301						
	M 17	103	106	96	118	273	327						
	O 18	96	106	97	137	297	295						
	N 19	100	98	96	140	257	290						
	T 20	100	99	97	148	194	338						
	H 21	102	102	96	152	156	297						
	22	95	100	94	160	153	325						
	23	102	102	102	151	167	308						
	24	102	102	98	159	167	323						
	25	95	99	93	160	198	265						
	26	101	103	101	178	228	269						
	27	94	104	97	194	262	336						
	28	103	103	102	192	239	316						
	29	96		96	194	224	342						
	30	102		92	204	245	272						
	31	91		101		208							
Monthly Average	99	101	98	134	223	283	313						160
% of 2022 Expected Daily Use	94%	97%	97%	112%	142%	110%	105%						111%

Notes: 1) "AF" denotes acre-feet. "MG" denotes million gallons. 2) Expected Daily Use is based on historical use with normal weather conditions. 3) The predicted end-of-month supply reservoir contents figures assume normal weather after July 5th, 2022. 4) The differences between predicted and actual end-of-month supply reservoir contents are the result of normal estimation error of daily use, supply, evaporation, carriage losses and raw water deliveries. 5) Predicted supply reservoir contents last updated on July 5th, 2022. 6) Daily water figures are subject to change.

Lake Powell Report*

Lake Powell Elevation (2001-Current)



* Denver Water gets half of its water supply from the Colorado River and closely monitors conditions at Lake Powell and within the greater Colorado River Basin.