



## WATER WATCH REPORT

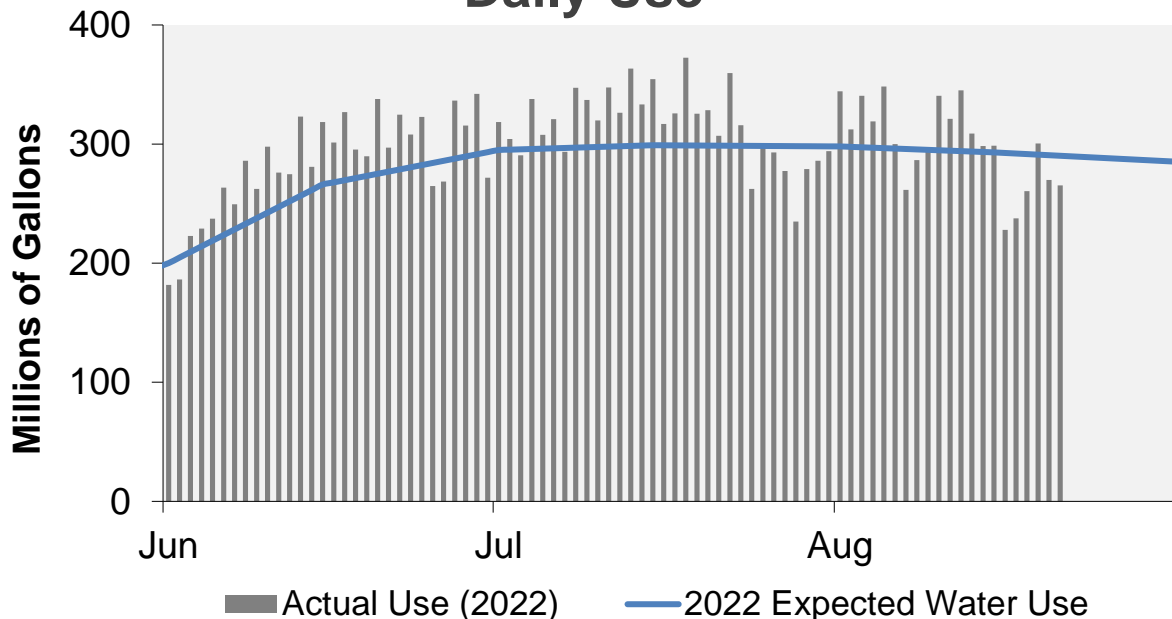
August 22, 2022

### Supply Reservoir Contents

Reservoir	Capacity		Current Usable Contents (acre-feet)	Percent Full		
	(acre-feet)			Current	Last Year	Historical Median
	Total	Usable				
Antero	20,122	20,067	19,999	100%	99%	100%
Eleven Mile	97,779	97,779	100,036	102%	103%	103%
Cheesman	79,064	79,064	78,811	100%	98%	95%
Marston	19,108	13,133	9,149	70%	85%	65%
Strontia Springs	7,863	7,163	6,264	87%	89%	93%
Chatfield	28,709	12,415	3,190	26%	10%	60%
Dillon	257,304	249,095	225,761	91%	98%	99%
Gross*	41,811	29,811	15,275	51%	90%	85%
Ralston	10,776	7,276	6,310	87%	39%	88%
Meadow Creek	5,370	4,520	4,080	90%	53%	78%
<b>Total</b>	<b>567,906</b>	<b>520,323</b>	<b>468,875</b>	<b>90%</b>	<b>95%</b>	<b>93%</b>

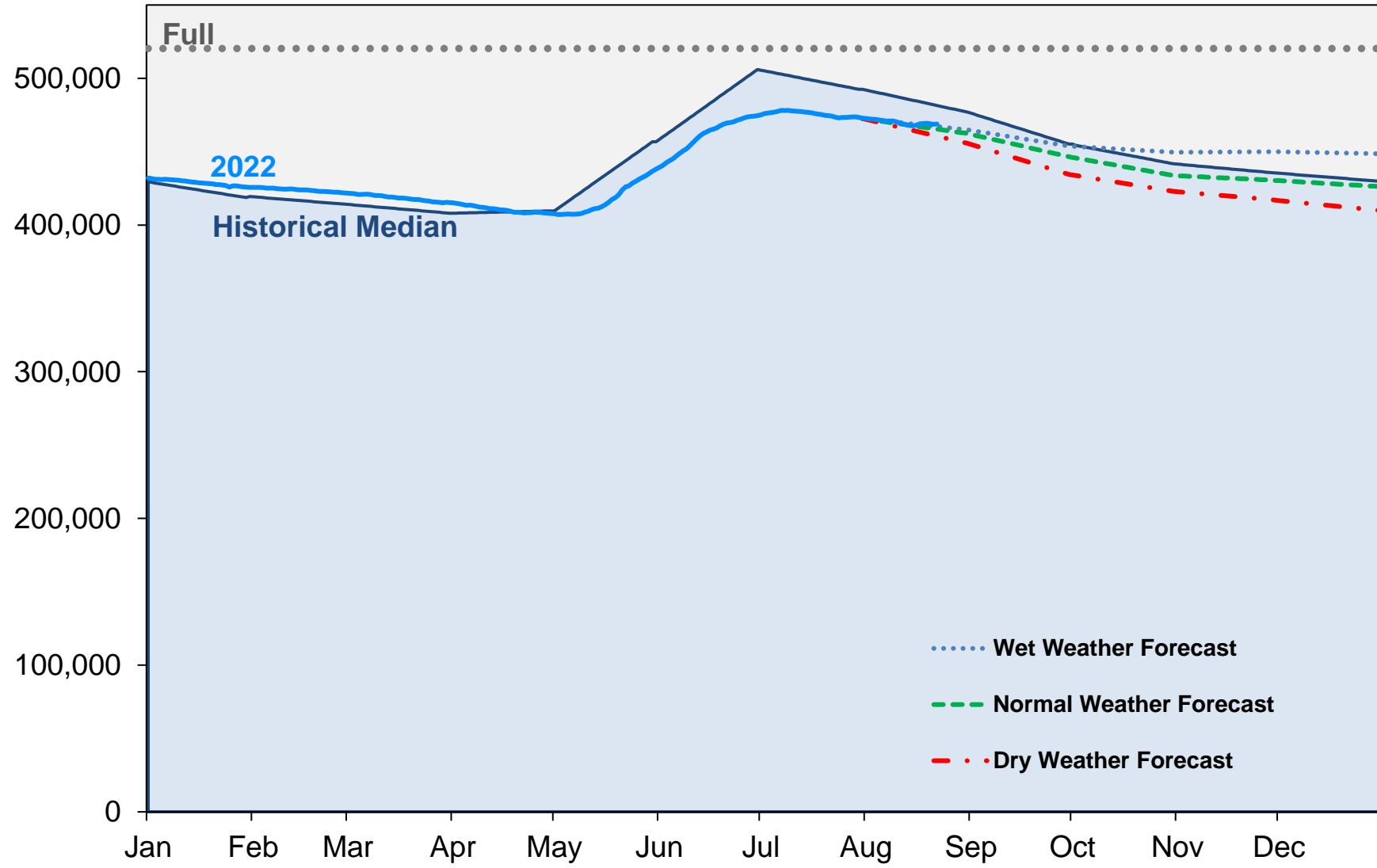
\*Gross Reservoir storage is limited to 29,938 acre feet in total storage during construction activities. The percent full figures are based on the normal usable capacity of 29,811 acre feet.

### Daily Use



# Supply Reservoir Contents

Acre-Feet

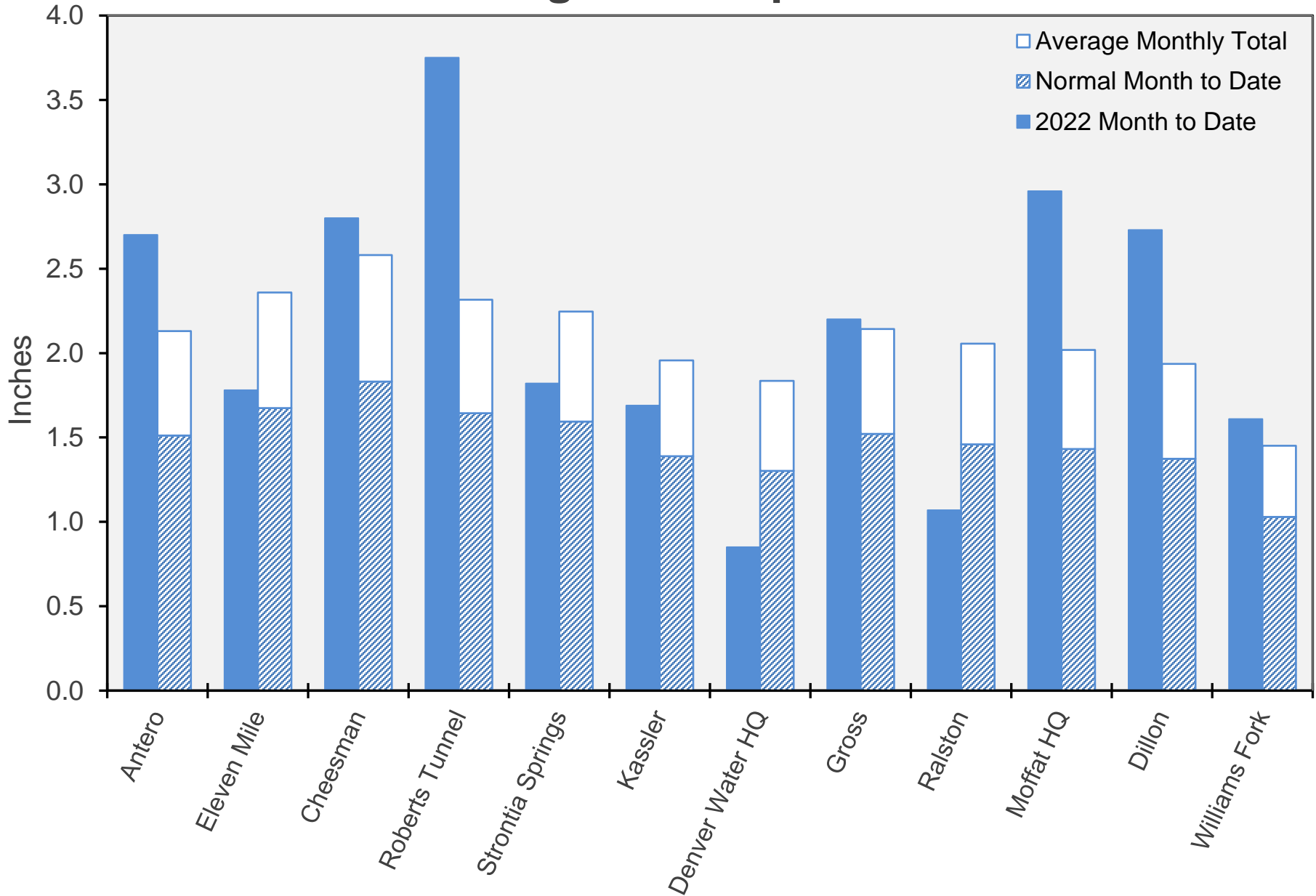


Note: Denver Water forecasts seasonal reservoir storage contents under dry future weather, normal future weather and wet future weather scenarios.

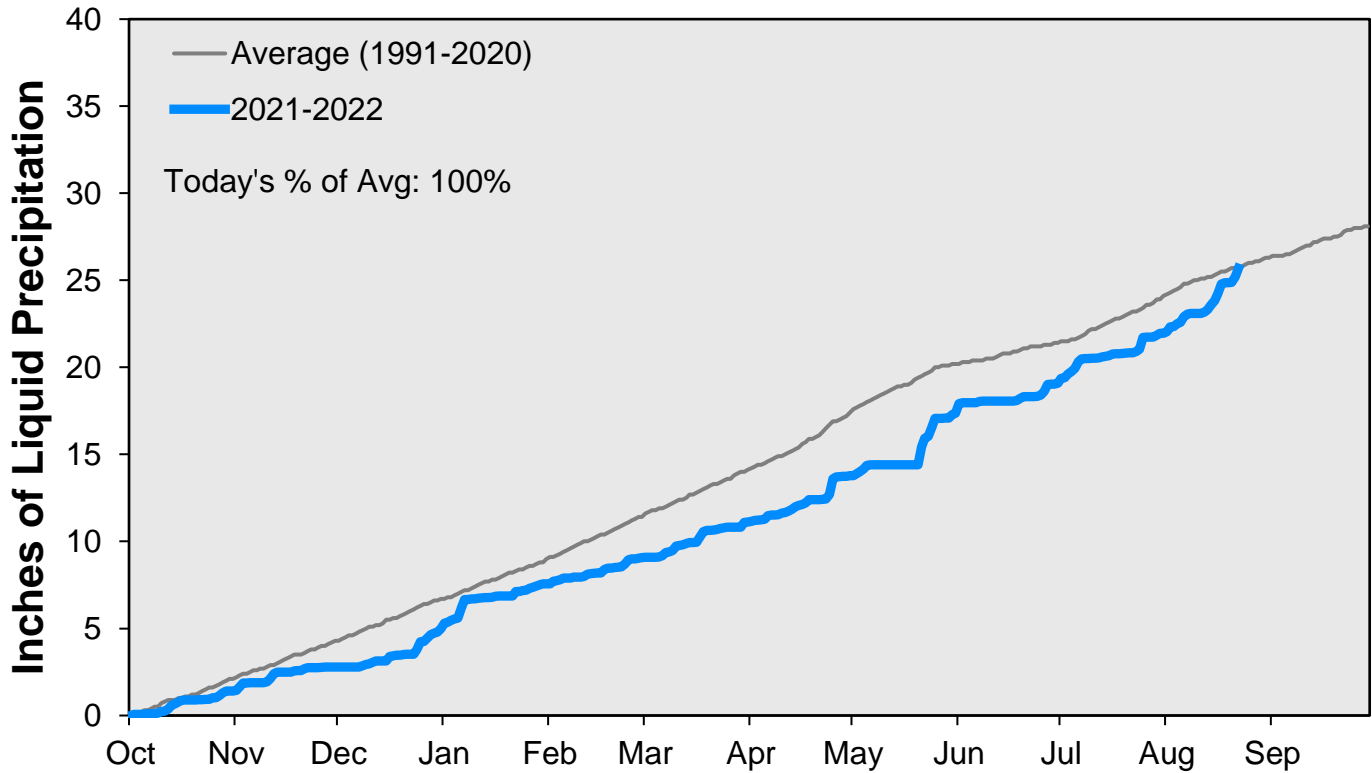
Gross Reservoir storage is limited to 29,938 acre feet in total storage during construction activities. The percent full figures are based on the normal usable capacity of 29,811 acre feet.

August 22, 2022

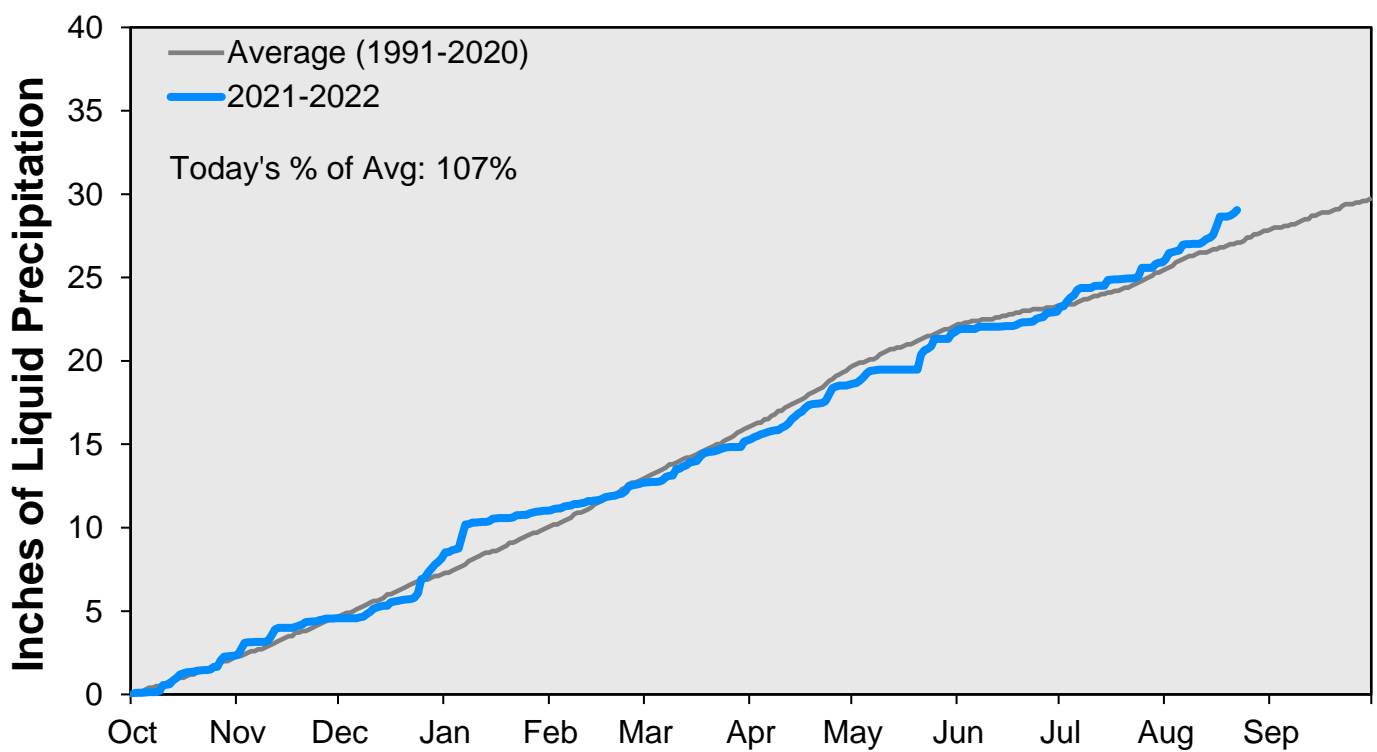
# August Precipitation



### CUMULATIVE PRECIPITATION: SOUTH PLATTE RIVER

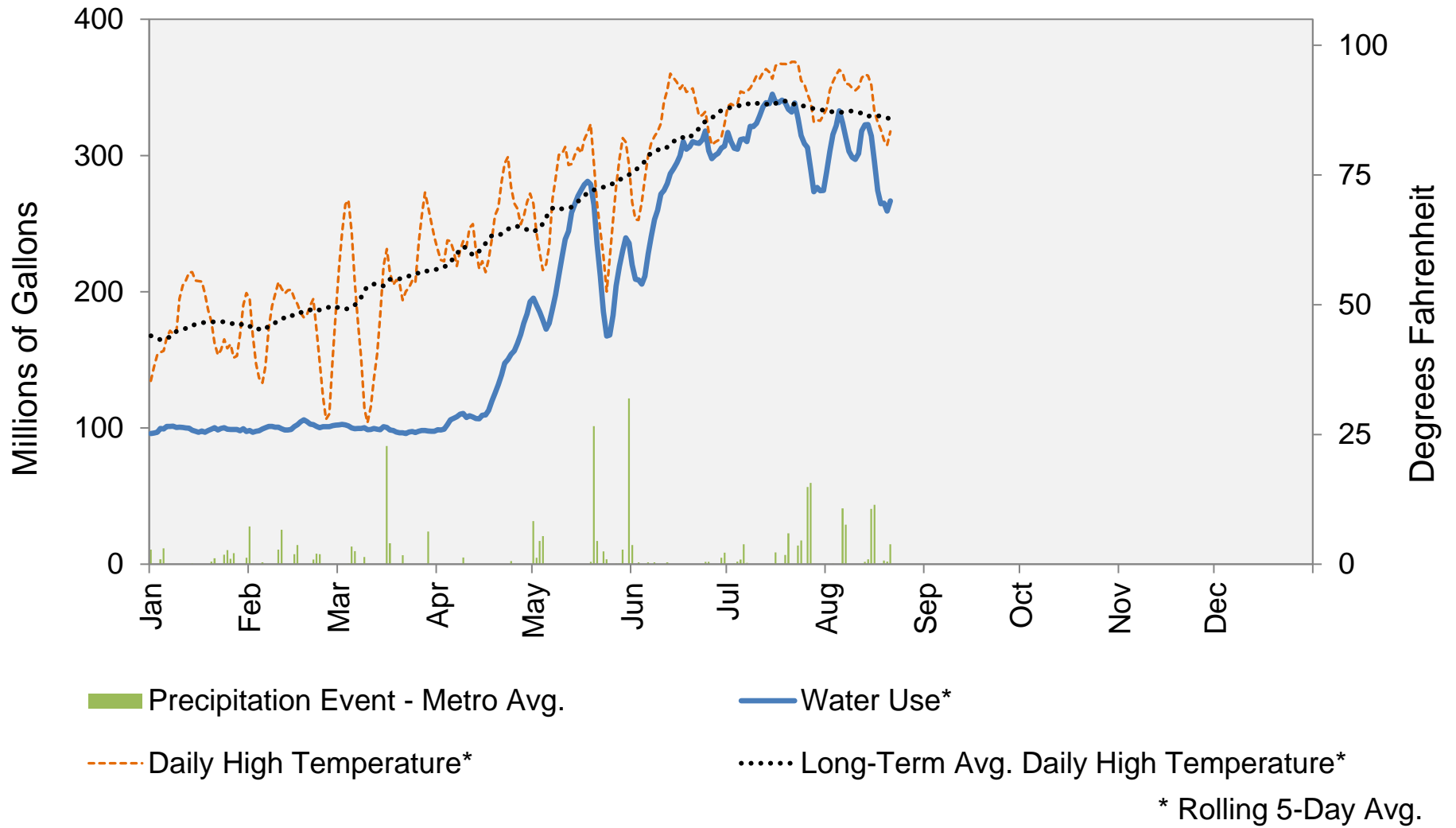


### CUMULATIVE PRECIPITATION: COLORADO RIVER WATERSHED



Data are from the 7 SNOTEL stations above Denver Water's Upper Colorado diversion facilities.

## 2022 Water Use and Weather Conditions



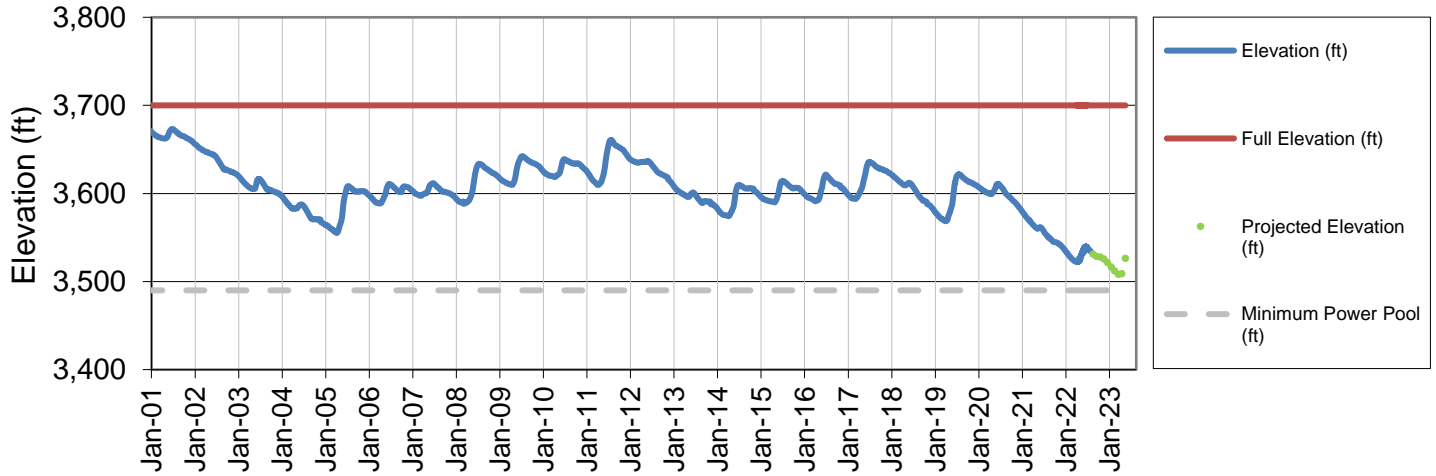
### Denver Water Use and Reservoir Contents 2022

	Jan	Feb	Mar	Apr	May	Jun	Jul	Aug	Sep	Oct	Nov	Dec	YTD-Avg
Predicted End-of-Month Supply Reservoir Contents (Full = 518,449 AF)	462,400												
Actual End-of-Month Supply Reservoir Contents (AF)	425,595	421,903	415,083	407,905	438,115	474,473	472,785						
Actual % Full	82%	81%	80%	79%	85%	92%	91%						
Historical Median % Full	81%	80%	79%	79%	88%	98%	95%	92%	88%	85%	84%	83%	
2022 Expected Daily Use (MG)	105	104	102	120	157	257	298	292	270	158	105	101	175
Actual Daily Use (MG)	1	92	98	102	102	192	182	318	344				
	2	100	95	101	102	169	186	304	312				
	3	100	100	101	99	166	223	291	340				
	4	105	105	100	109	165	229	338	319				
	5	99	97	95	118	171	237	308	348				
	6	101	103	100	108	214	263	321	300				
	7	100	100	102	107	222	250	294	261				
	8	101	100	101	108	217	286	347	287				
	9	101	102	103	112	236	262	337	297				
	D 10	99	98	88	103	241	298	320	341				
	A 11	100	97	100	115	275	276	348	321				
	Y 12	98	96	105	102	253	275	326	345				
	13	101	99	98	103	285	323	363	309				
	O 14	93	105	102	112	268	281	333	298				
	F 15	96	108	99	116	269	319	355	299				
	16	96	105	97	116	297	301	317	228				
	M 17	103	106	96	118	273	327	326	238				
	O 18	96	106	97	137	297	295	373	260				
	N 19	100	98	96	140	257	290	326	301				
	T 20	100	99	97	148	194	338	328	270				
	H 21	102	102	96	152	156	297	307	265				
	22	95	100	94	160	153	325	360					
	23	102	102	102	151	167	308	316					
	24	102	102	98	159	167	323	262					
	25	95	99	93	160	198	265	299					
	26	101	103	101	178	228	269	293					
	27	94	104	97	194	262	336	277					
	28	103	103	102	192	239	316	235					
	29	96		96	194	224	342	279					
	30	102		92	204	245	272	286					
	31	91		101		208		294					
Monthly Average	99	101	98	134	223	283	315	299					191
% of 2022 Expected Daily Use	94%	97%	97%	112%	142%	110%	106%	102%					109%

Notes: 1) "AF" denotes acre-feet. "MG" denotes million gallons. 2) Expected Daily Use is based on historical use with normal weather conditions. 3) The predicted end-of-month supply reservoir contents figures assume normal weather after August 1<sup>st</sup>, 2022. 4) The differences between predicted and actual end-of-month supply reservoir contents are the result of normal estimation error of daily use, supply, evaporation, carriage losses and raw water deliveries. 5) Predicted supply reservoir contents last updated on August 8<sup>th</sup>, 2022. 6) Daily water figures are subject to change.

# Lake Powell Report\*

## Lake Powell Elevation (2001-Current)



\* Denver Water gets half of its water supply from the Colorado River and closely monitors conditions at Lake Powell and within the greater Colorado River Basin.