



WATER WATCH REPORT

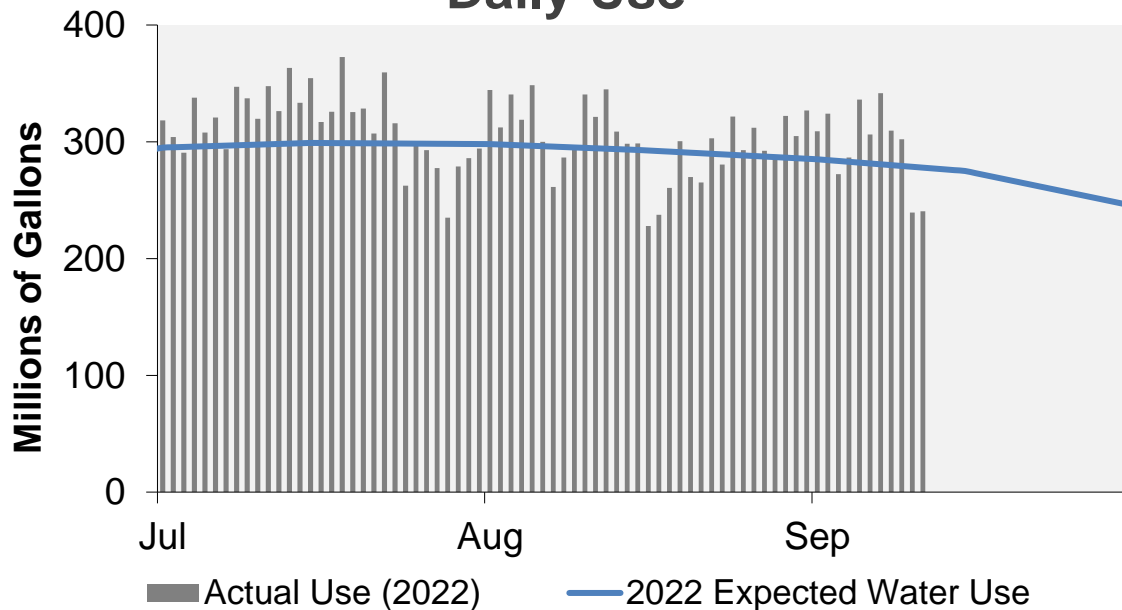
September 12, 2022

Supply Reservoir Contents

Reservoir	Capacity		Current Usable Contents (acre-feet)	Percent Full		
	(acre-feet)			Current	Last	Historical
	Total	Usable	Year		Median	
Antero	20,122	20,067	19,781	99%	98%	100%
Eleven Mile	97,779	97,779	99,658	102%	103%	102%
Cheesman	79,064	79,064	75,506	95%	98%	91%
Marston	19,108	13,133	9,464	72%	85%	56%
Strontia Springs	7,863	7,163	6,563	92%	86%	93%
Chatfield	28,709	12,415	3,786	30%	33%	52%
Dillon	257,304	249,095	219,902	88%	91%	97%
Gross*	41,811	29,811	15,640	52%	81%	80%
Ralston	10,776	7,276	6,707	92%	21%	80%
Meadow Creek	5,370	4,520	2,638	58%	48%	62%
Total	567,906	520,323	459,645	88%	91%	90%

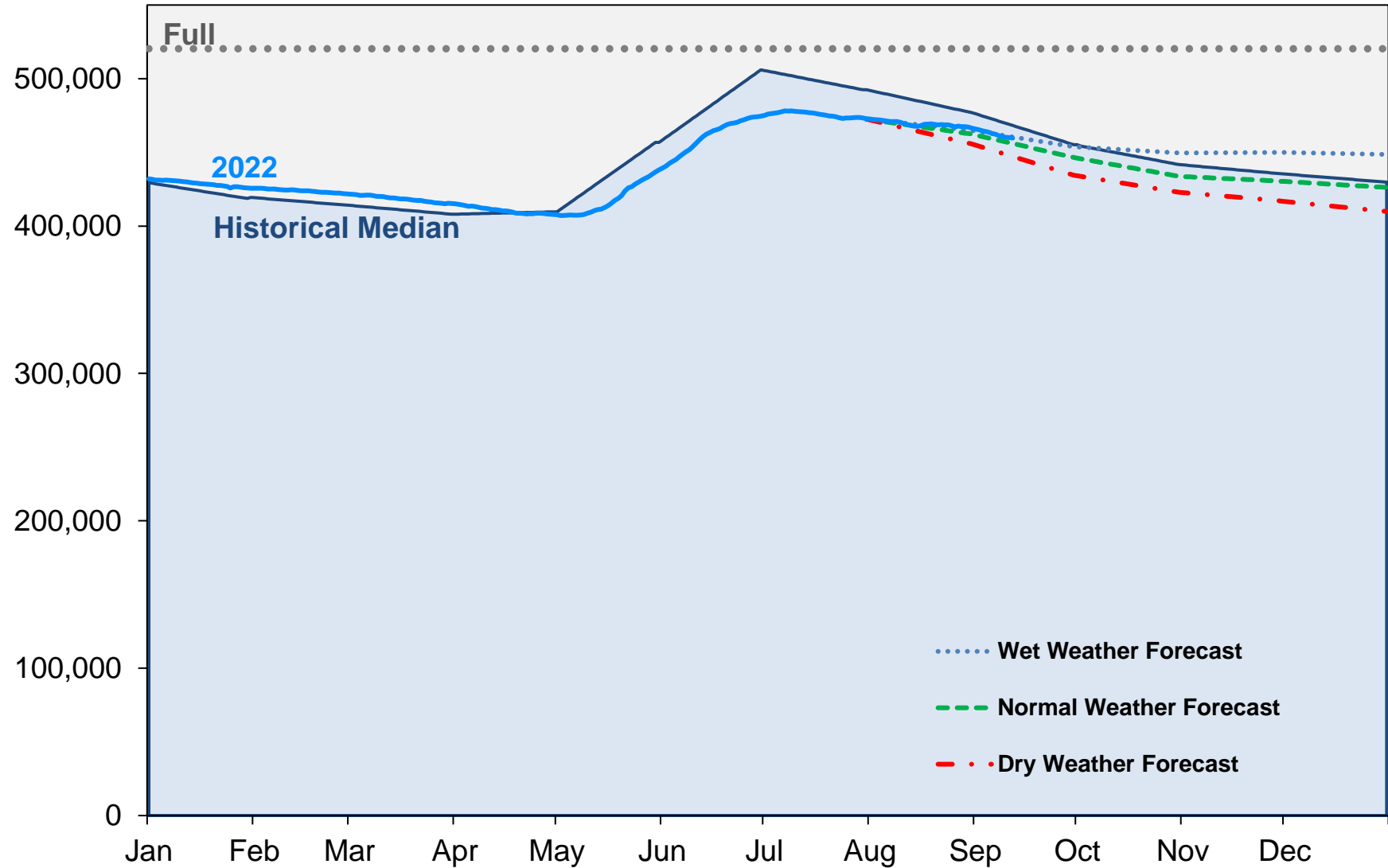
*Gross Reservoir storage is limited to 29,938 acre feet in total storage during construction activities. The percent full figures are based on the normal usable capacity of 29,811 acre feet.

Daily Use



Supply Reservoir Contents

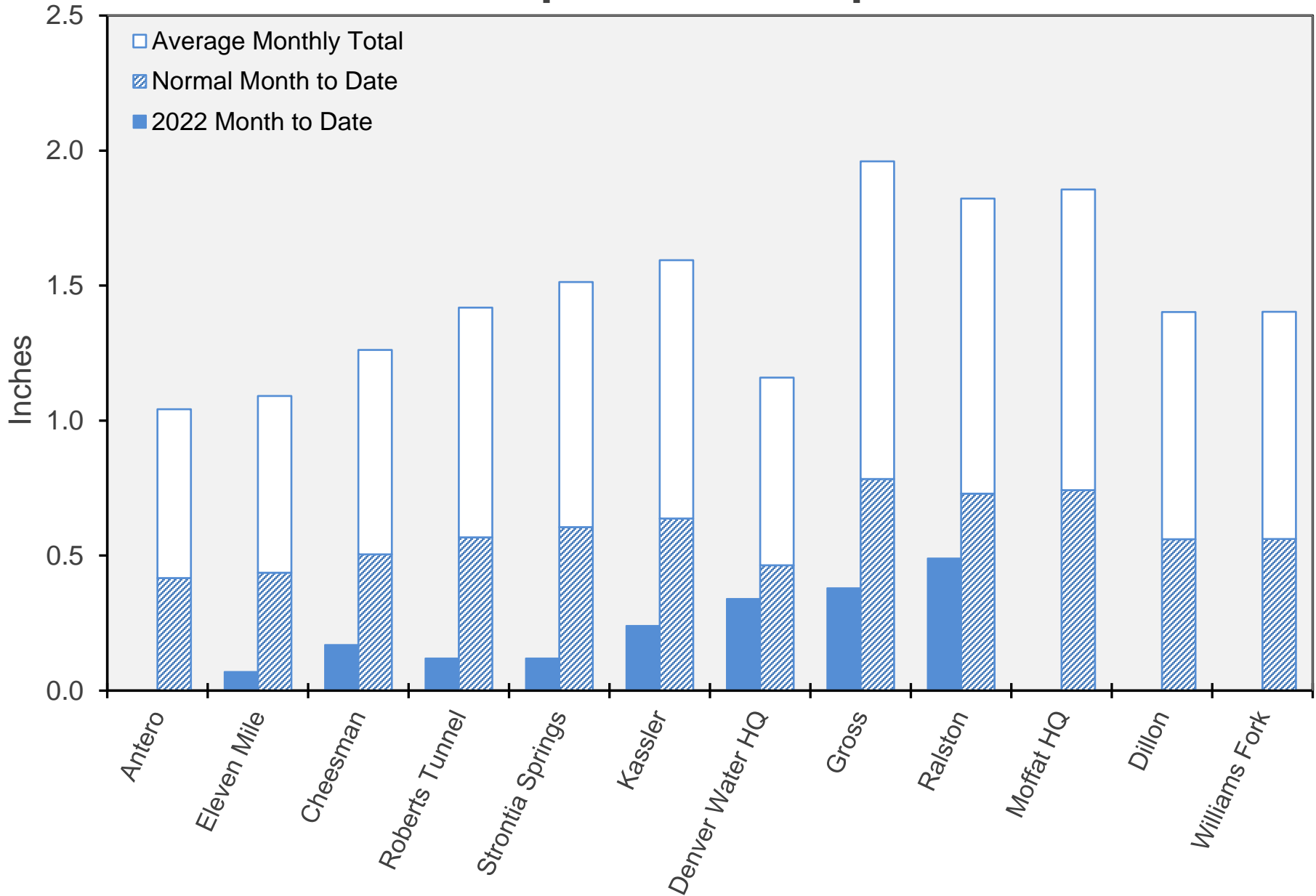
Acre-Feet



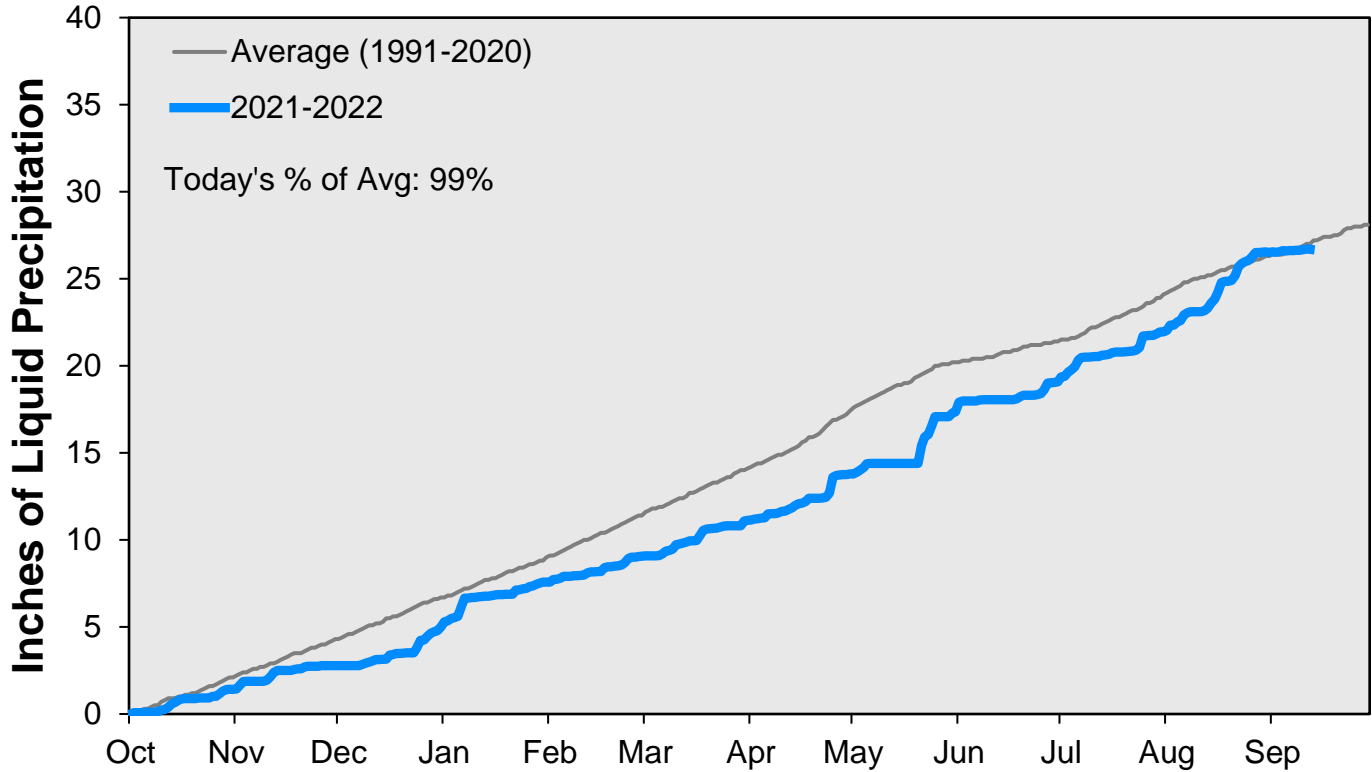
Note: Denver Water forecasts seasonal reservoir storage contents under dry future weather, normal future weather and wet future weather scenarios.

Gross Reservoir storage is limited to 29,938 acre feet in total storage during construction activities. The percent full figures are based on the normal usable capacity of 29,811 acre feet.

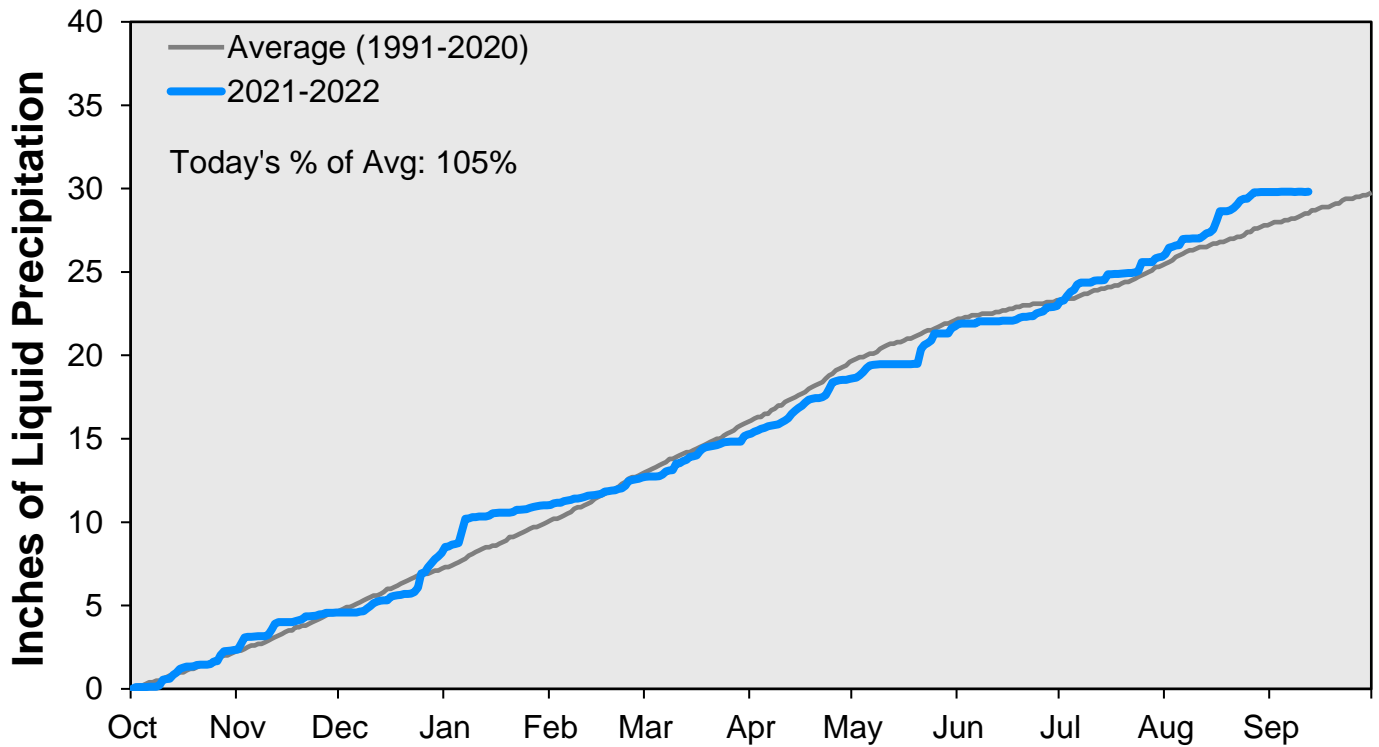
September Precipitation



CUMULATIVE PRECIPITATION: SOUTH PLATTE RIVER

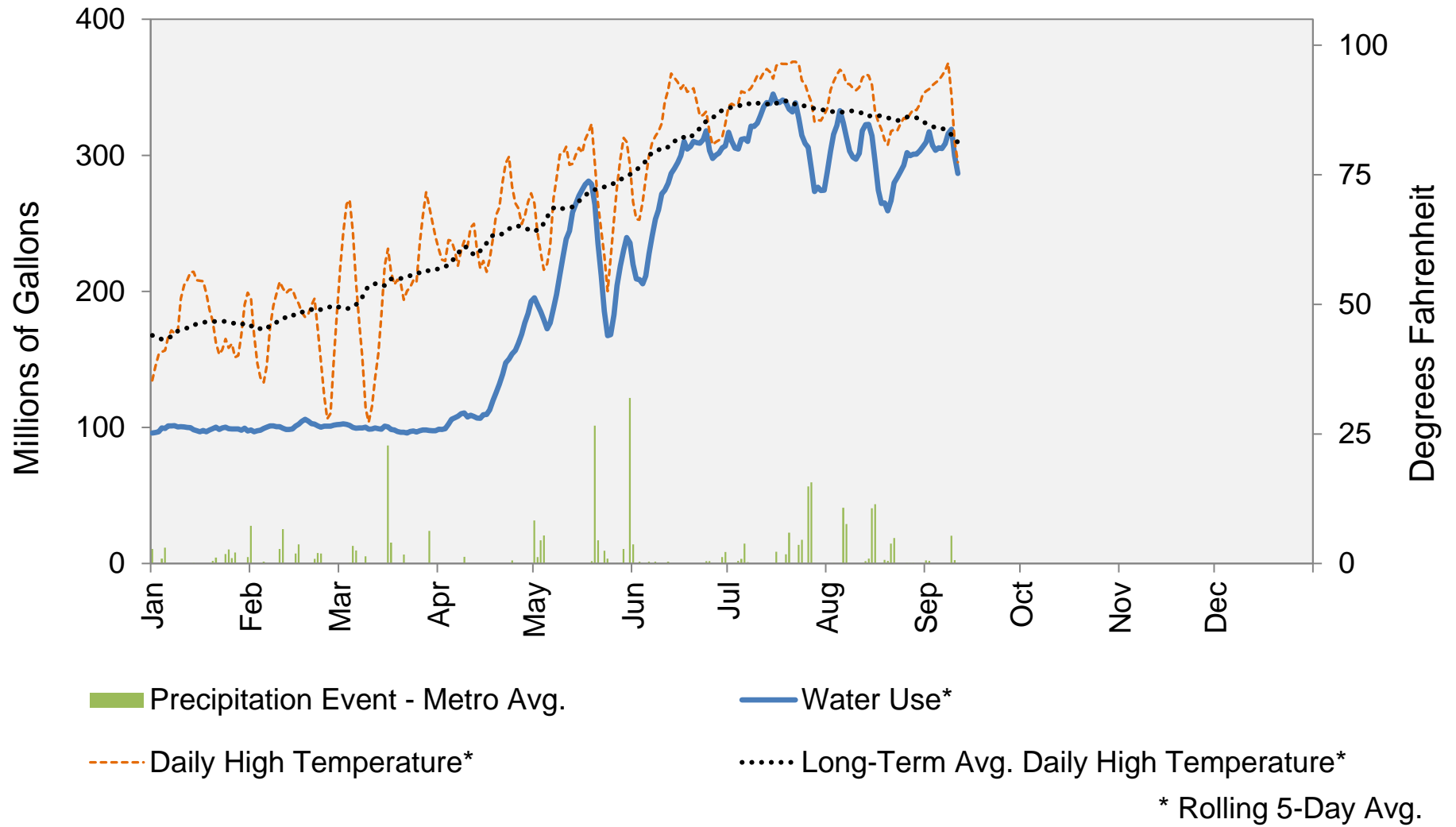


CUMULATIVE PRECIPITATION: COLORADO RIVER WATERSHED



Data are from the 7 SNOTEL stations above Denver Water's Upper Colorado diversion facilities.

2022 Water Use and Weather Conditions



September 12, 2022

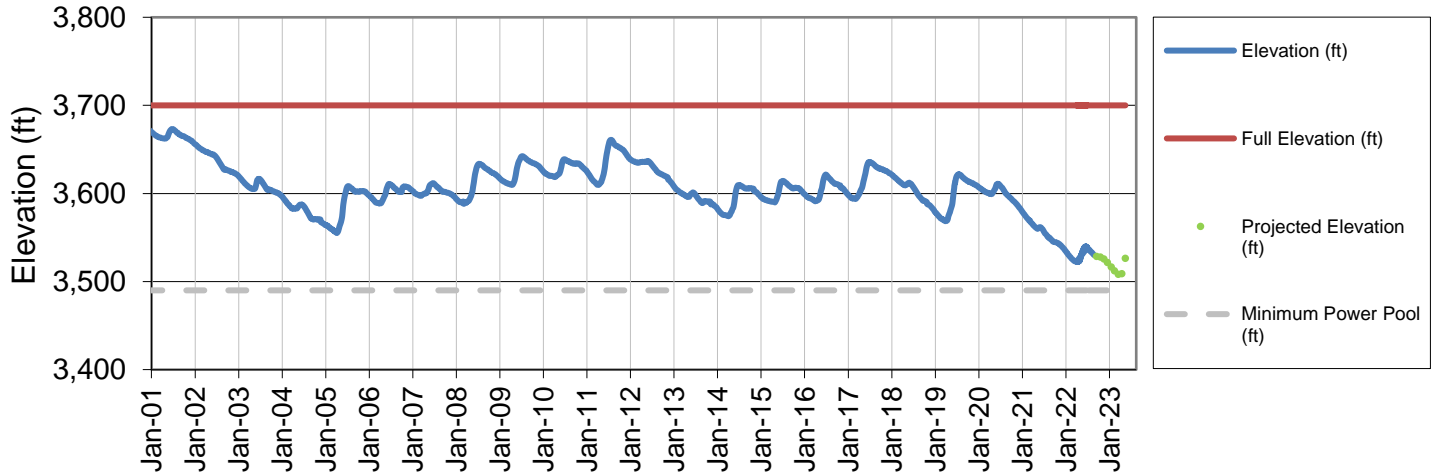
Denver Water Use and Reservoir Contents 2022

	Jan	Feb	Mar	Apr	May	Jun	Jul	Aug	Sep	Oct	Nov	Dec	YTD-Avg
Predicted End-of-Month Supply Reservoir Contents (Full = 518,449 AF)	446,500												
Actual End-of-Month Supply Reservoir Contents (AF)	425,595	421,903	415,083	407,905	438,115	474,473	472,785	466,519					
Actual % Full	82%	81%	80%	79%	85%	92%	91%	90%					
Historical Median % Full	81%	80%	79%	79%	88%	98%	95%	92%	88%	85%	84%	83%	
2022 Expected Daily Use (MG)	105	104	102	120	157	257	298	292	270	158	105	101	184
Actual Daily Use (MG)	1	92	98	102	102	192	182	318	344	309			
	2	100	95	101	102	169	186	304	312	324			
	3	100	100	101	99	166	223	291	340	272			
	4	105	105	100	109	165	229	338	319	286			
	5	99	97	95	118	171	237	308	348	336			
	6	101	103	100	108	214	263	321	300	306			
	7	100	100	102	107	222	250	294	261	342			
	8	101	100	101	108	217	286	347	287	310			
	9	101	102	103	112	236	262	337	297	302			
	D 10	99	98	88	103	241	298	320	341	239			
	A 11	100	97	100	115	275	276	348	321	240			
	Y 12	98	96	105	102	253	275	326	345				
		13	101	99	98	103	285	323	363	309			
	O 14	93	105	102	112	268	281	333	298				
	F 15	96	108	99	116	269	319	355	299				
		16	96	105	97	116	297	301	317	228			
	M 17	103	106	96	118	273	327	326	238				
	O 18	96	106	97	137	297	295	373	260				
	N 19	100	98	96	140	257	290	326	301				
	T 20	100	99	97	148	194	338	328	270				
	H 21	102	102	96	152	156	297	307	265				
		22	95	100	94	160	153	325	360	303			
		23	102	102	102	151	167	308	316	281			
		24	102	102	98	159	167	323	262	322			
		25	95	99	93	160	198	265	299	293			
		26	101	103	101	178	228	269	293	312			
		27	94	104	97	194	262	336	277	292			
		28	103	103	102	192	239	316	235	286			
		29	96		96	194	224	342	279	322			
		30	102		92	204	245	272	286	305			
		31	91		101	208		294	327				
Monthly Average	99	101	98	134	223	283	315	301	297				200
% of 2022 Expected Daily Use	94%	97%	97%	112%	142%	110%	106%	103%	110%				109%

Notes: 1) "AF" denotes acre-feet. "MG" denotes million gallons. 2) Expected Daily Use is based on historical use with normal weather conditions. 3) The predicted end-of-month supply reservoir contents figures assume normal weather after September 6th, 2022. 4) The differences between predicted and actual end-of-month supply reservoir contents are the result of normal estimation error of daily use, supply, evaporation, carriage losses and raw water deliveries. 5) Predicted supply reservoir contents last updated on September 6th, 2022. 6) Daily water figures are subject to change.

Lake Powell Report*

Lake Powell Elevation (2001-Current)



* Denver Water gets half of its water supply from the Colorado River and closely monitors conditions at Lake Powell and within the greater Colorado River Basin.