



WATER WATCH REPORT

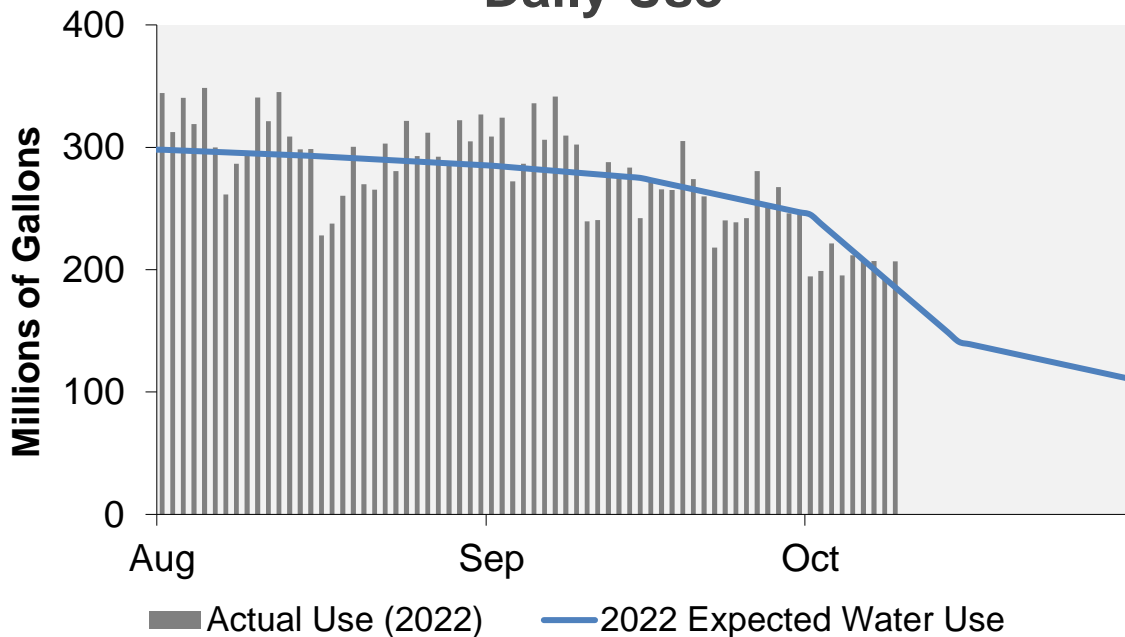
October 10, 2022

Supply Reservoir Contents

Reservoir	Capacity		Current Usable Contents (acre-feet)	Percent Full		
	(acre-feet)			Current	Last Year	Historical Median
	Total	Usable				
Antero	20,122	20,067	19,868	99%	98%	99%
Eleven Mile	97,779	97,779	100,278	103%	102%	102%
Cheesman	79,064	79,064	71,973	91%	96%	84%
Marston	19,108	13,133	8,464	64%	82%	44%
Strontia Springs	7,863	7,163	6,125	86%	93%	93%
Chatfield	28,709	12,415	4,030	32%	34%	49%
Dillon	257,304	249,095	215,990	87%	83%	96%
Gross*	41,811	29,811	15,593	52%	78%	76%
Ralston	10,776	7,276	6,766	93%	0%	67%
Meadow Creek	5,370	4,520	685	15%	45%	37%
Total	567,906	520,323	449,772	86%	86%	87%

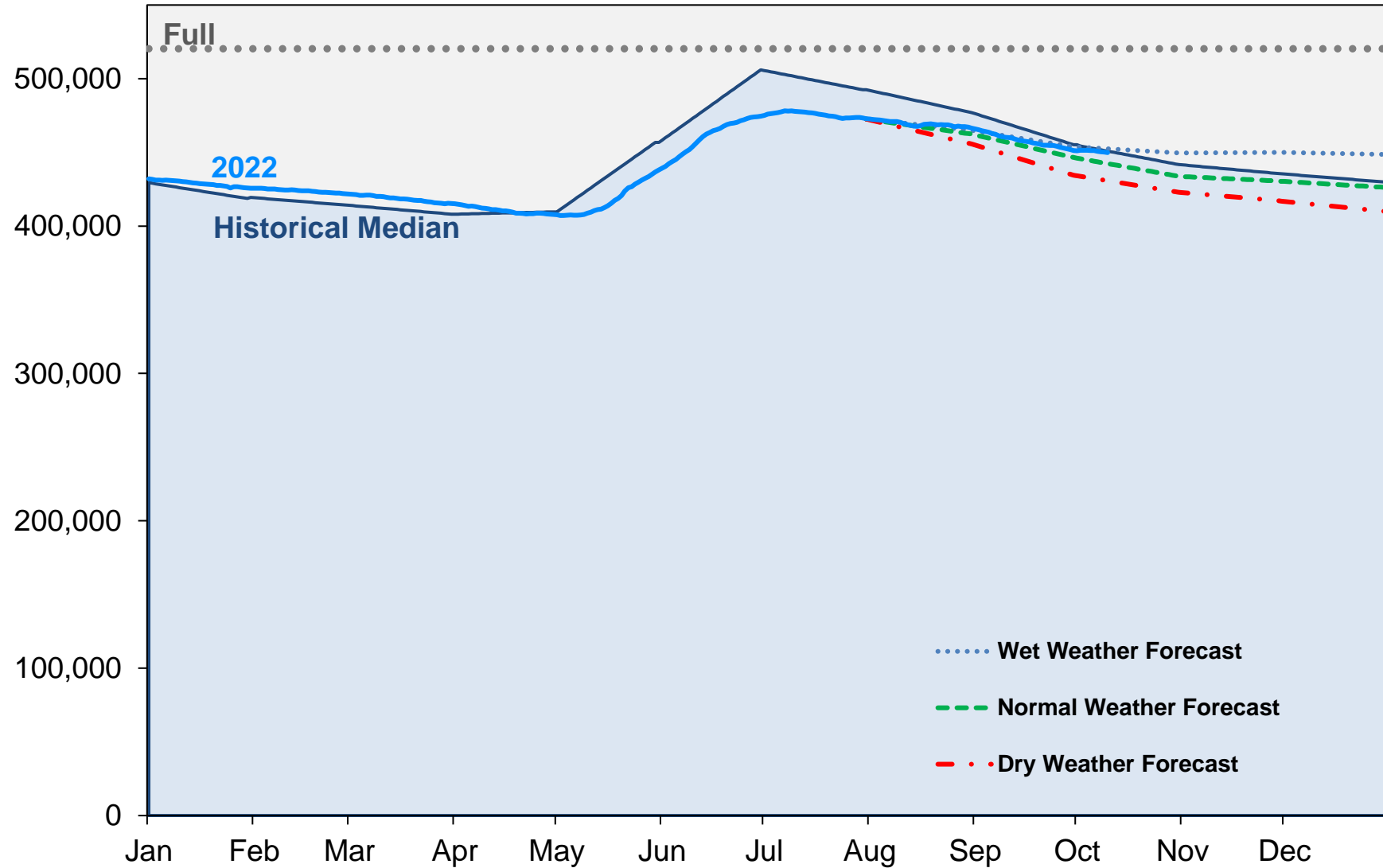
*Gross Reservoir storage is limited to 29,938 acre feet in total storage during construction activities. The percent full figures are based on the normal usable capacity of 29,811 acre feet.

Daily Use



Supply Reservoir Contents

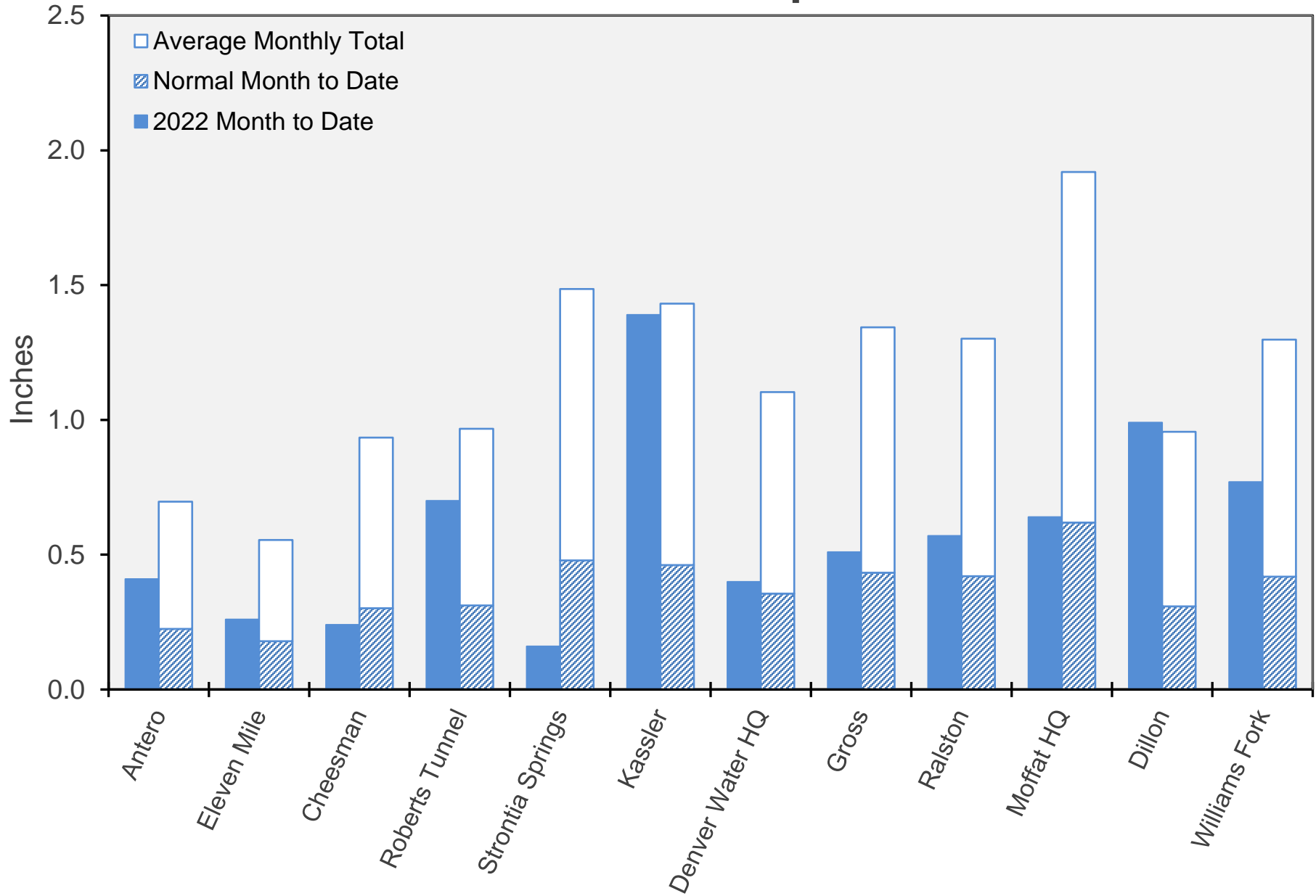
Acre-Feet



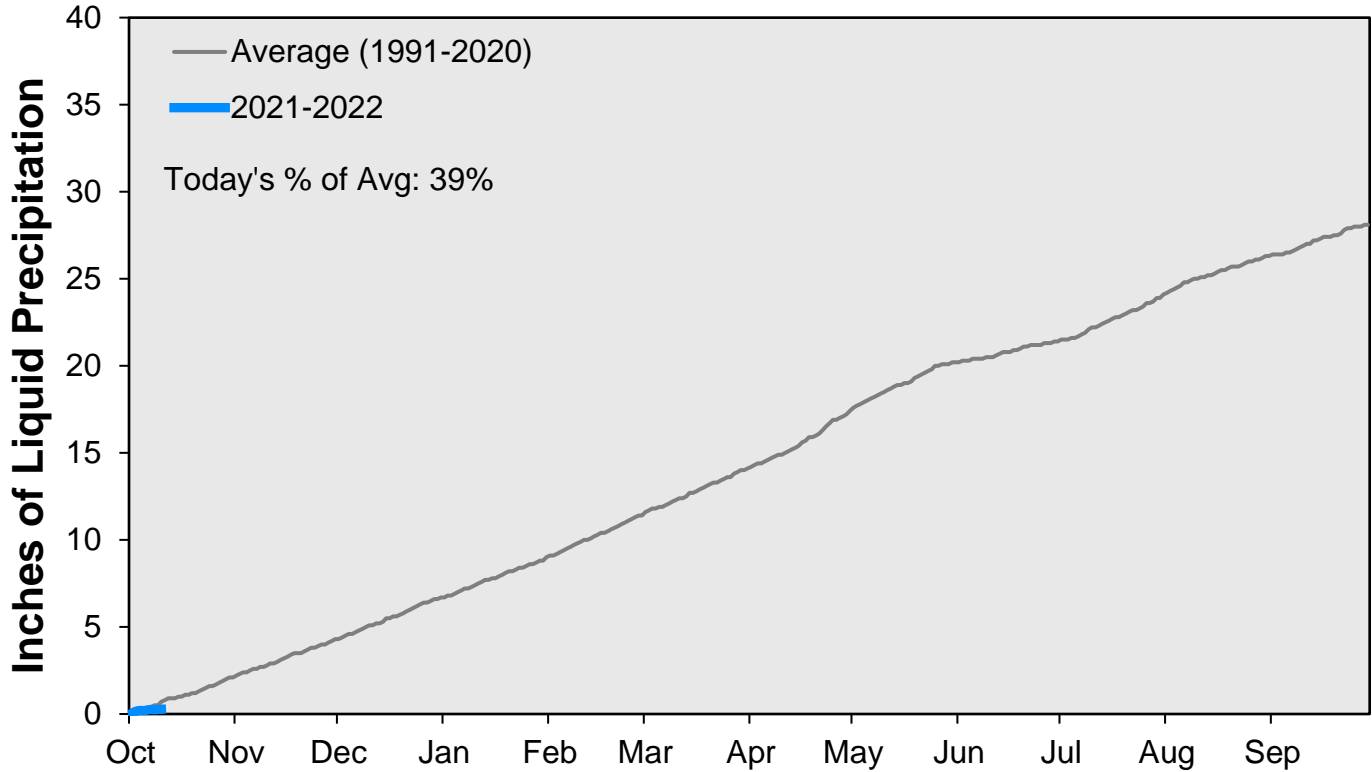
Note: Denver Water forecasts seasonal reservoir storage contents under dry future weather, normal future weather and wet future weather scenarios.

Gross Reservoir storage is limited to 29,938 acre feet in total storage during construction activities. The percent full figures are based on the normal usable capacity of 29,811 acre feet.

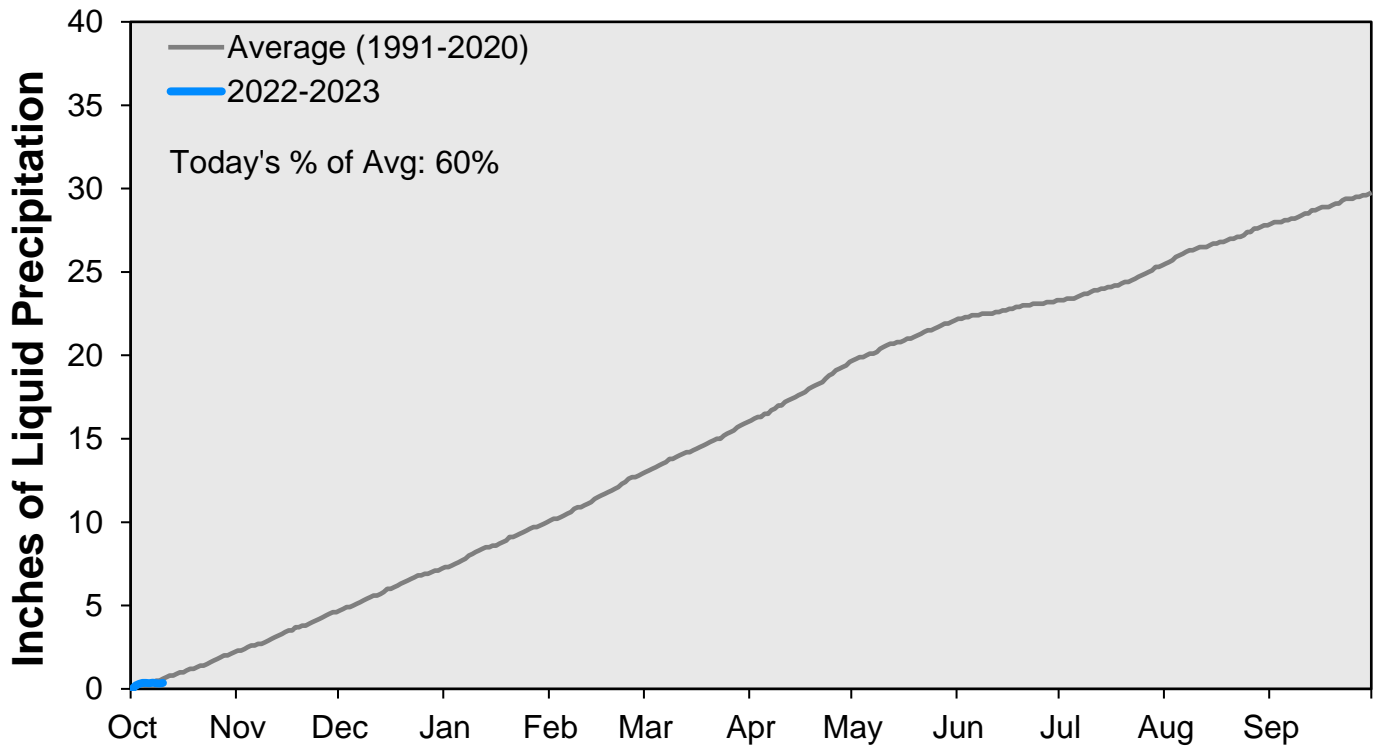
October Precipitation



CUMULATIVE PRECIPITATION: SOUTH PLATTE RIVER

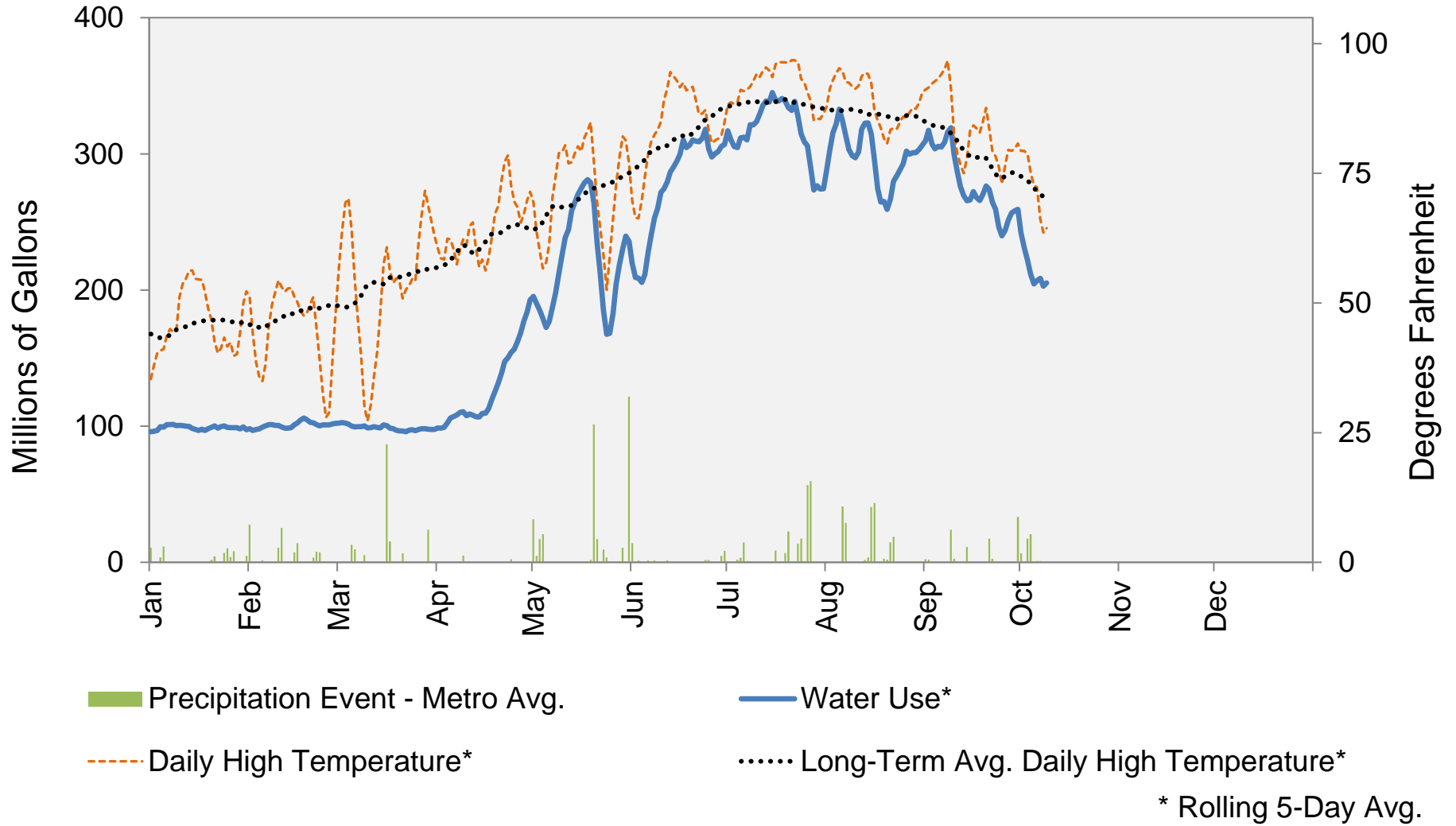


CUMULATIVE PRECIPITATION: COLORADO RIVER WATERSHED



Data are from the 7 SNOTEL stations above Denver Water's Upper Colorado diversion facilities.

2022 Water Use and Weather Conditions



October 10, 2022

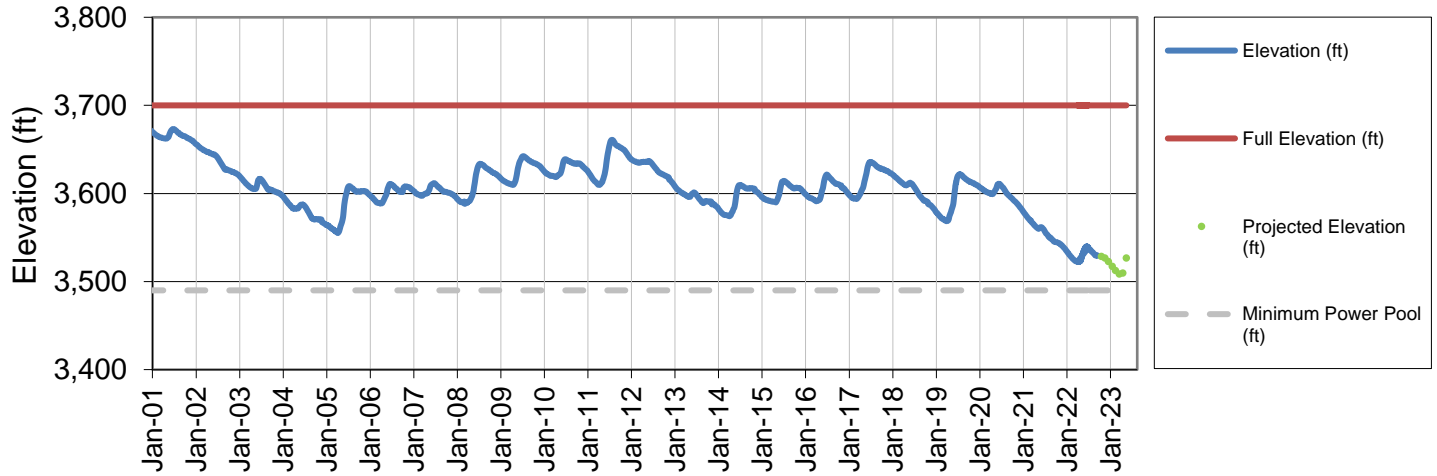
Denver Water Use and Reservoir Contents 2022

	Jan	Feb	Mar	Apr	May	Jun	Jul	Aug	Sep	Oct	Nov	Dec	YTD-Avg
Predicted End-of-Month Supply Reservoir Contents (Full = 518,449 AF)	441,900												
Actual End-of-Month Supply Reservoir Contents (AF)	425,595	421,903	415,083	407,905	438,115	474,473	472,785	466,519	451,255				
Actual % Full	82%	81%	80%	79%	85%	92%	91%	90%	87%				
Historical Median % Full	81%	80%	79%	79%	88%	98%	95%	92%	88%	85%	84%	83%	
2022 Expected Daily Use (MG)	105	104	102	120	157	257	298	292	270	158	105	101	189
Actual Daily Use (MG)	1	92	98	102	102	192	182	318	344	309	194		
	2	100	95	101	102	169	186	304	312	324	199		
	3	100	100	101	99	166	223	291	340	272	221		
	4	105	105	100	109	165	229	338	319	286	195		
	5	99	97	95	118	171	237	308	348	336	212		
	6	101	103	100	108	214	263	321	300	306	207		
	7	100	100	102	107	222	250	294	261	342	207		
	8	101	100	101	108	217	286	347	287	310	193		
	9	101	102	103	112	236	262	337	297	302	207		
	D 10	99	98	88	103	241	298	320	341	239			
	A 11	100	97	100	115	275	276	348	321	240			
	Y 12	98	96	105	102	253	275	326	345	288			
		13	101	99	98	103	285	323	363	309	276		
	O 14	93	105	102	112	268	281	333	298	283			
	F 15	96	108	99	116	269	319	355	299	242			
		16	96	105	97	116	297	301	317	228	272		
	M 17	103	106	96	118	273	327	326	238	266			
	O 18	96	106	97	137	297	295	373	260	265			
	N 19	100	98	96	140	257	290	326	301	305			
	T 20	100	99	97	148	194	338	328	270	274			
	H 21	102	102	96	152	156	297	307	265	260			
		22	95	100	94	160	153	325	360	303	218		
		23	102	102	102	151	167	308	316	281	240		
		24	102	102	98	159	167	323	262	322	239		
		25	95	99	93	160	198	265	299	293	242		
		26	101	103	101	178	228	269	293	312	281		
		27	94	104	97	194	262	336	277	292	254		
		28	103	103	102	192	239	316	235	286	268		
		29	96		96	194	224	342	279	322	246		
		30	102		92	204	245	272	286	305	248		
		31	91		101	208		294	327				
Monthly Average	99	101	98	134	223	283	315	301	274	204			204
% of 2022 Expected Daily Use	94%	97%	97%	112%	142%	110%	106%	103%	102%	129%			108%

Notes: 1) "AF" denotes acre-feet. "MG" denotes million gallons. 2) Expected Daily Use is based on historical use with normal weather conditions. 3) The predicted end-of-month supply reservoir contents figures assume normal weather after October 3rd, 2022. 4) The differences between predicted and actual end-of-month supply reservoir contents are the result of normal estimation error of daily use, supply, evaporation, carriage losses and raw water deliveries. 5) Predicted supply reservoir contents last updated on October 3rd, 2022. 6) Daily water figures are subject to change.

Lake Powell Report*

Lake Powell Elevation (2001-Current)



* Denver Water gets half of its water supply from the Colorado River and closely monitors conditions at Lake Powell and within the greater Colorado River Basin.