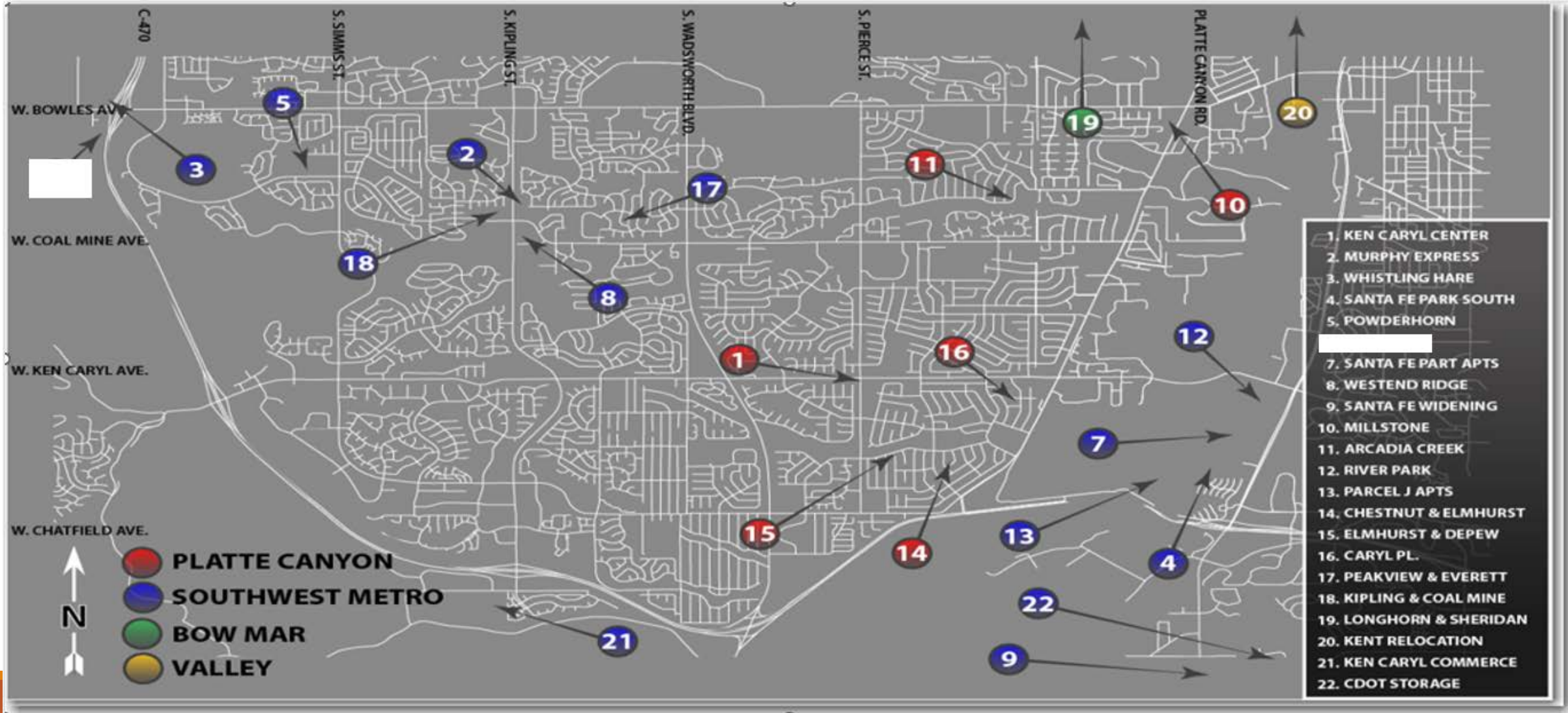


PLAN REVIEW AND CONSTRUCTION STATUS REPORT November - 2022

SUMMARY OF PROJECTS
IN DESIGN OR UNDER
CONSTRUCTION





Overall Project Map

NEW DEVELOPMENT PROJECTS IN DESIGN/PLAN REVIEW:

Below are developer originated, developer funded, projects in various stages of plan review by District Staff, District Engineer and Denver Water

- 1. Ken Caryl Center Fil 2 - Ken Caryl & Pierce – Commercial Development*
- 2. Santa Fe Park Apartments - Mineral & Santa Fe - Multi Family Development*
- 3. River Park - Mineral and Santa Fe – Multi-family and Commercial*
- 4. Parcel J Apartments - Mineral & Santa Fe – Multi Family*
- 5. Santa Fe Park South - Mineral & Santa Fe – Anticipated Revenue - \$3,000,000*
- 6. Westend Ridge – (New Owner; similar product) - Coal Mine and Independence – Multi-family - Anticipate Revenue - \$901,000*
- 7. Arcadia Creek – Good Property Development (Residential) Anticipated Revenue: sewer - \$30,525 & water - \$70,500*
- 8. Blakeland & Santa Fe Dr CDOT (Storage Building)*
- 9. Artisan Village Distillery– Bowles and C-470*
- 10. Ken Caryl Commerce – Ute & Toller – Warehouse*

NEW DEVELOPMENT PROJECTS IN CONSTRUCTION:

Below are developer projects in the construction phase (Plans are approved by DW and District)

- 1. Murphy Express - Kipling and Coal Mine – Gas Station – Water main and building under construction*
- 2. Millstone at Columbine - Bowles and Platte Canyon – Over Excavation in progress – sewer and water construction pending*
- 3. Santa Fe Widening – CDOT – Started construction 10/1/2022*

Millstone @ Columbine – during over-excavation



Millstone @ Columbine – After Over-excavation work – site at subgrade



Murphy Express and SWM 16" Replacement Project



THE FOLLOWING ARE 2022 CAPITAL PROJECTS IN CONSTRUCTION

CONSTRUCTION AHEAD

FOR MORE INFORMATION PLEASE VISIT:
www.plattecanyon.org/construction-corner
or call **303-979-2333**



➤ *Platte Canyon Three Water Projects:*

- *All pipe construction is complete – Final paving planned for next spring –*

Reason:

- *Jeffco required a wider (14') roto mill rather than the usual 10' width*

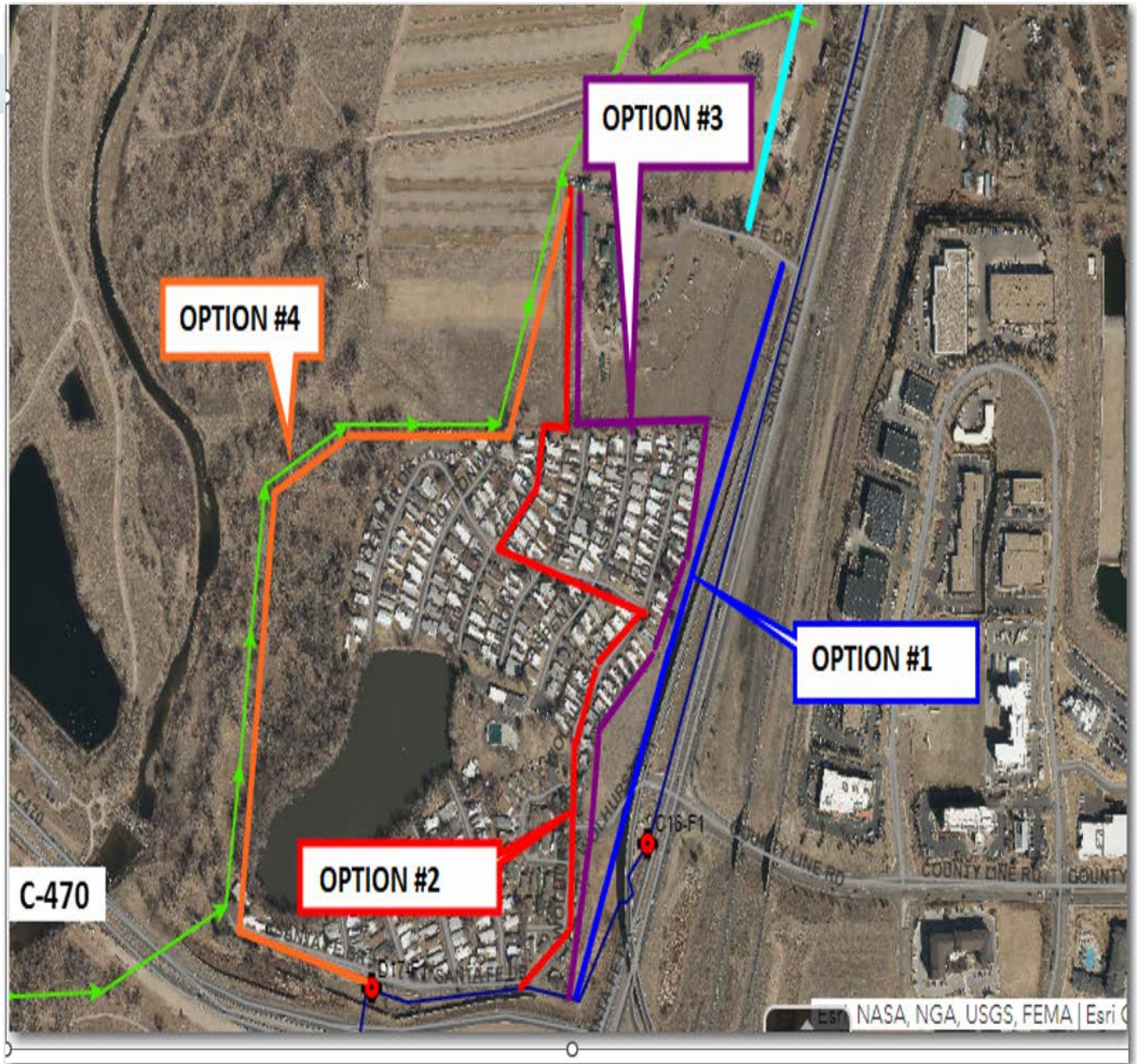
➤ *Southwest Metro – Water Project:*

- *Clearwater test results: After 4 tests the pipe passed clearwater and final connection completed*
- *Final paving will occur next spring due to delayed clear water results*



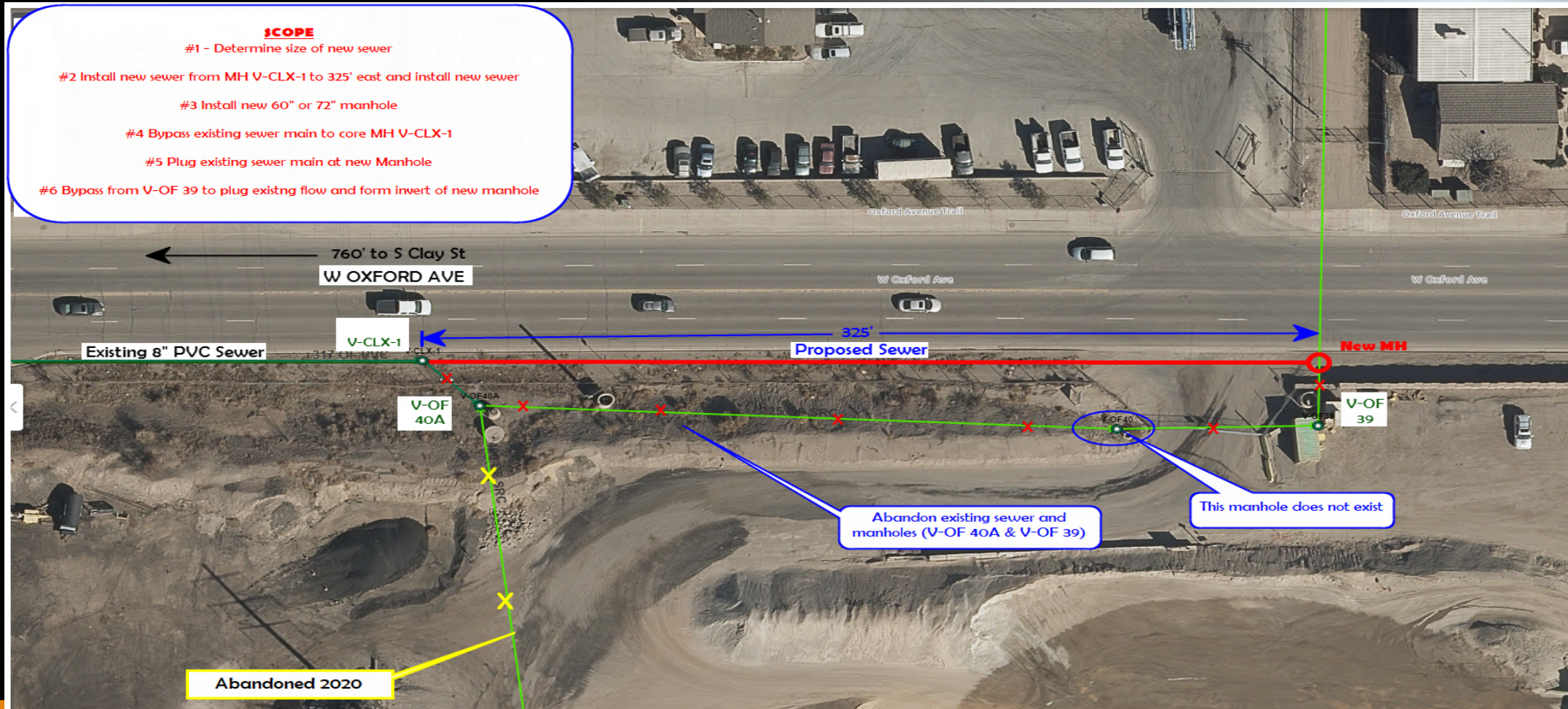
Flushing manifold after 4 failed tests

- *2023 Southwest Metro – 16" Replacement/Relocation Santa Fe Dr – C-470 to Dad Clark Gulch*
- *Option 3 Route – East side of Wolhurst*
- *Due to unreliable information a title search is in order to determine who owns certain property and the width of an existing Englewood prescriptive easement for the City Ditch*



Valley – Sewer Replacement – North of Kent Property

- Project design with RG
- Election results – Vote results were **NO** to De-bruce – Project still may go with an added service fee



CONCEPTUAL PLAN

QUESTIONS?