



WATER WATCH REPORT

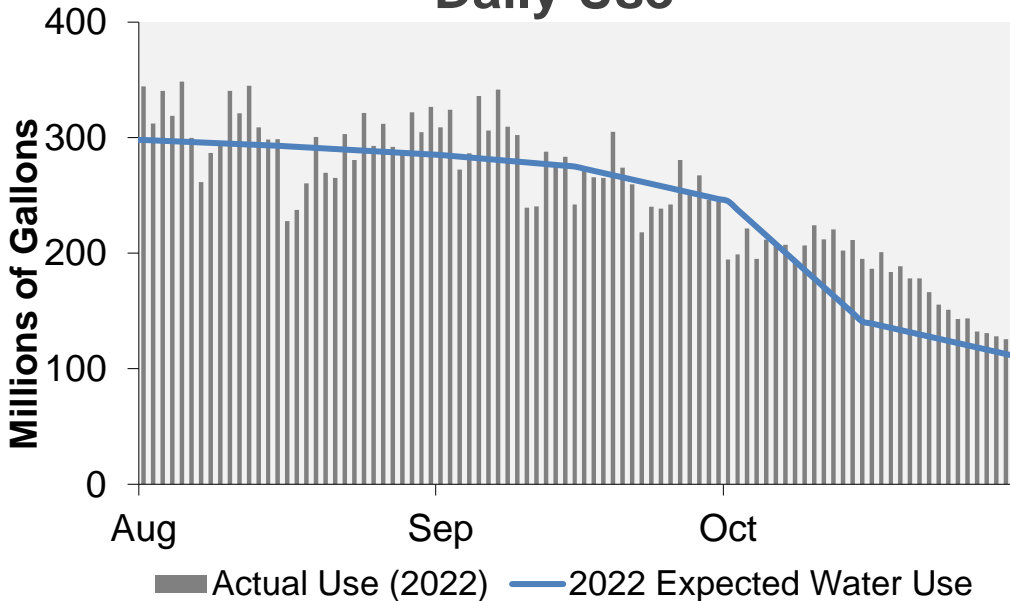
October 31, 2022

Supply Reservoir Contents

| Reservoir | Capacity | | Current Usable Contents (acre-feet) | Percent Full | | |
|------------------|----------------|----------------|---|--------------|------------|------------|
| | (acre-feet) | | | Current | Last | Historical |
| | Total | Usable | Year | | Median | |
| Antero | 20,122 | 20,067 | 19,933 | 99% | 98% | 100% |
| Eleven Mile | 97,779 | 97,779 | 100,692 | 103% | 102% | 101% |
| Cheesman | 79,064 | 79,064 | 66,386 | 84% | 94% | 81% |
| Marston | 19,108 | 13,133 | 8,935 | 68% | 84% | 33% |
| Strontia Springs | 7,863 | 7,163 | 6,379 | 89% | 86% | 93% |
| Chatfield | 28,709 | 12,415 | 4,633 | 37% | 37% | 52% |
| Dillon | 257,304 | 249,095 | 216,762 | 87% | 81% | 95% |
| Gross* | 41,811 | 29,811 | 16,024 | 54% | 77% | 70% |
| Ralston | 10,776 | 7,276 | 5,612 | 77% | 0% | 59% |
| Meadow Creek | 5,370 | 4,520 | 107 | 2% | 43% | 25% |
| Total | 567,906 | 520,323 | 445,464 | 86% | 85% | 85% |

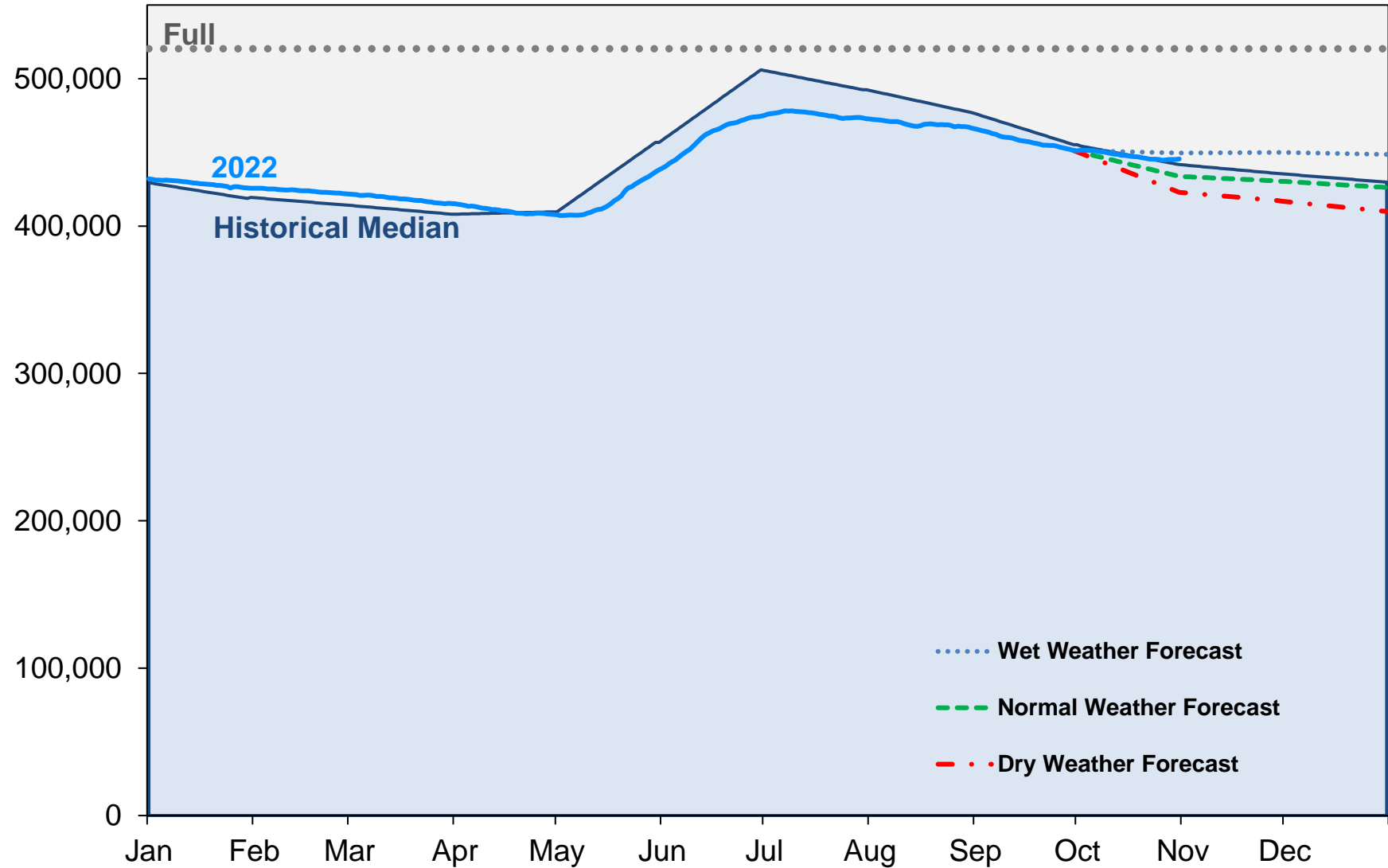
*Gross Reservoir storage is limited to 29,938 acre feet in total storage during construction activities. The percent full figures are based on the normal usable capacity of 29,811 acre feet.

Daily Use



Supply Reservoir Contents

Acre-Feet

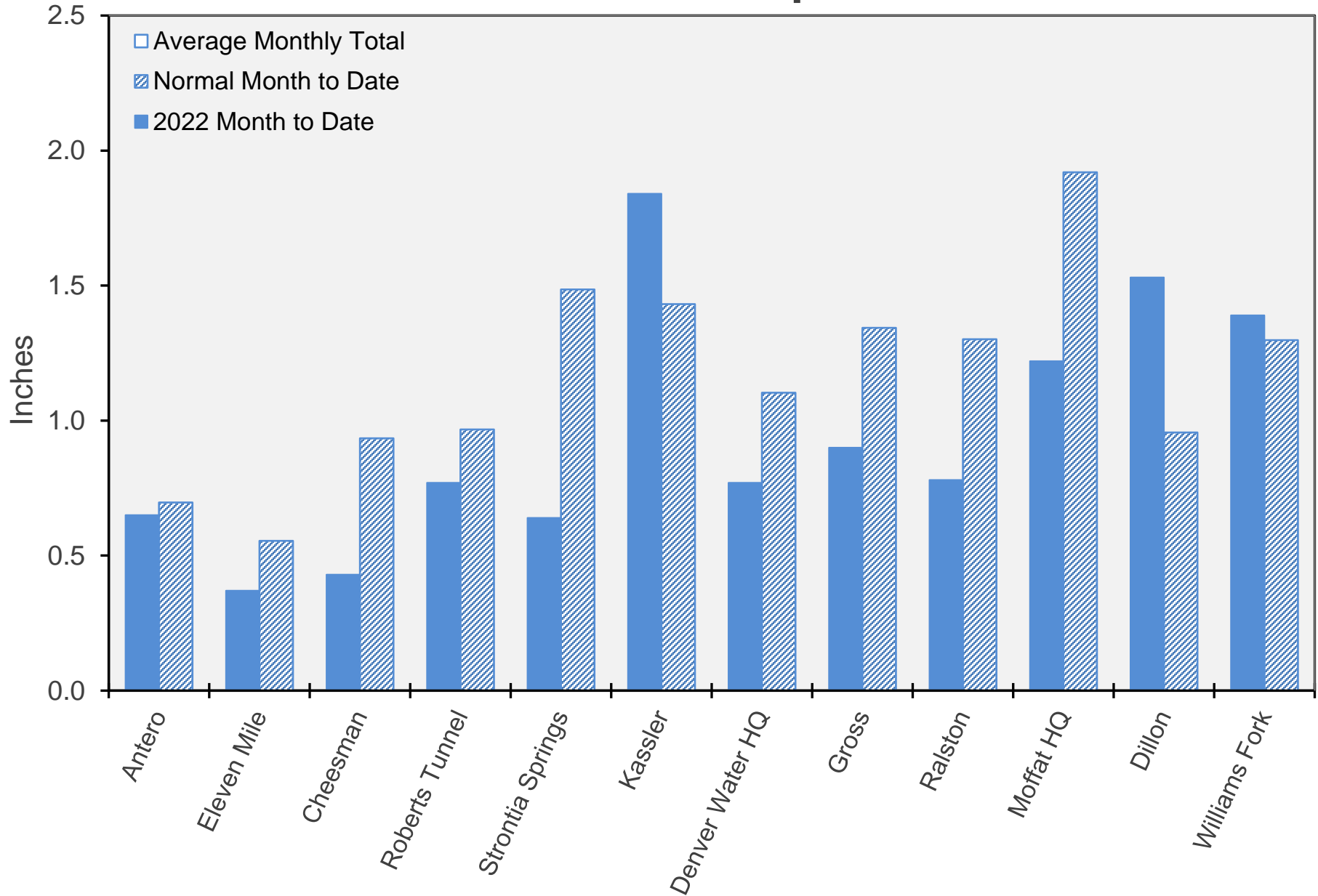


Note: Denver Water forecasts seasonal reservoir storage contents under dry future weather, normal future weather and wet future weather scenarios.

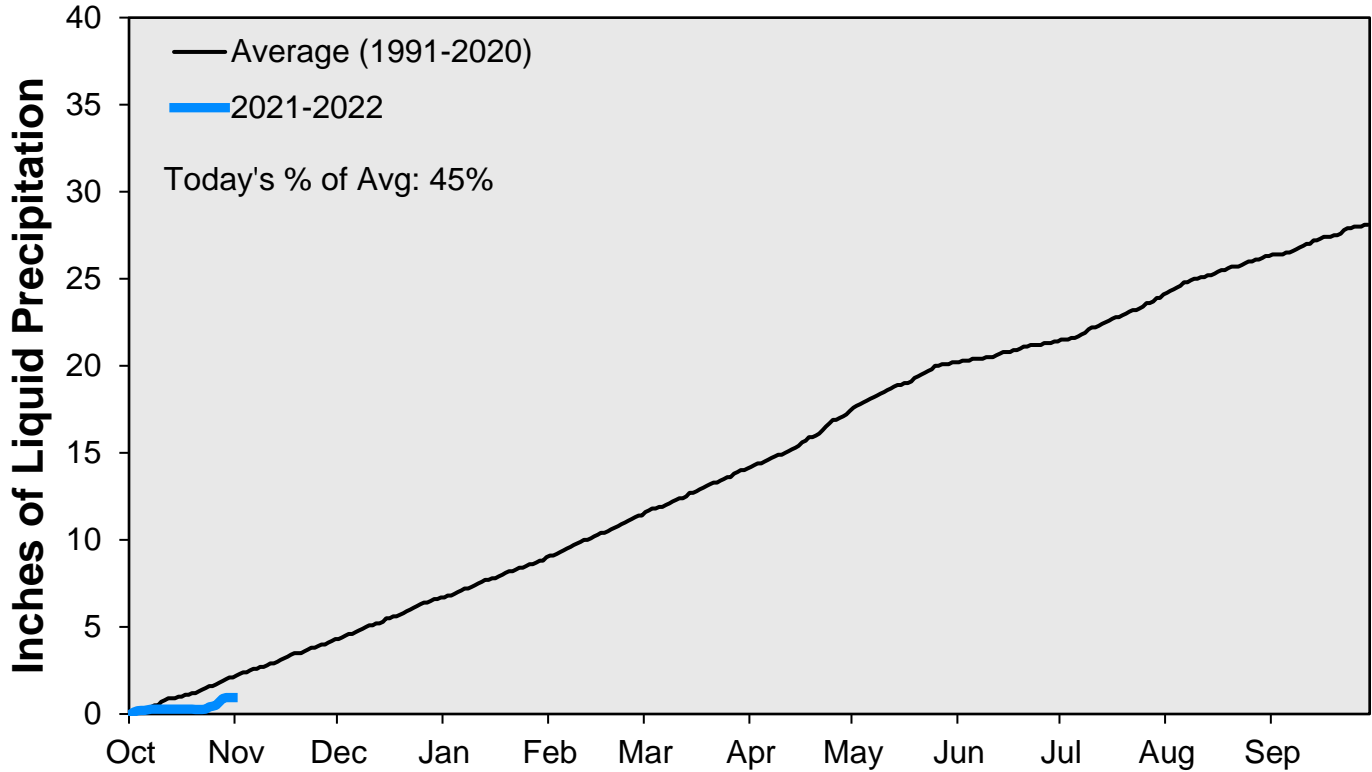
Gross Reservoir storage is limited to 29,938 acre feet in total storage during construction activities. The percent full figures are based on the normal usable capacity of 29,811 acre feet.

October 31, 2022

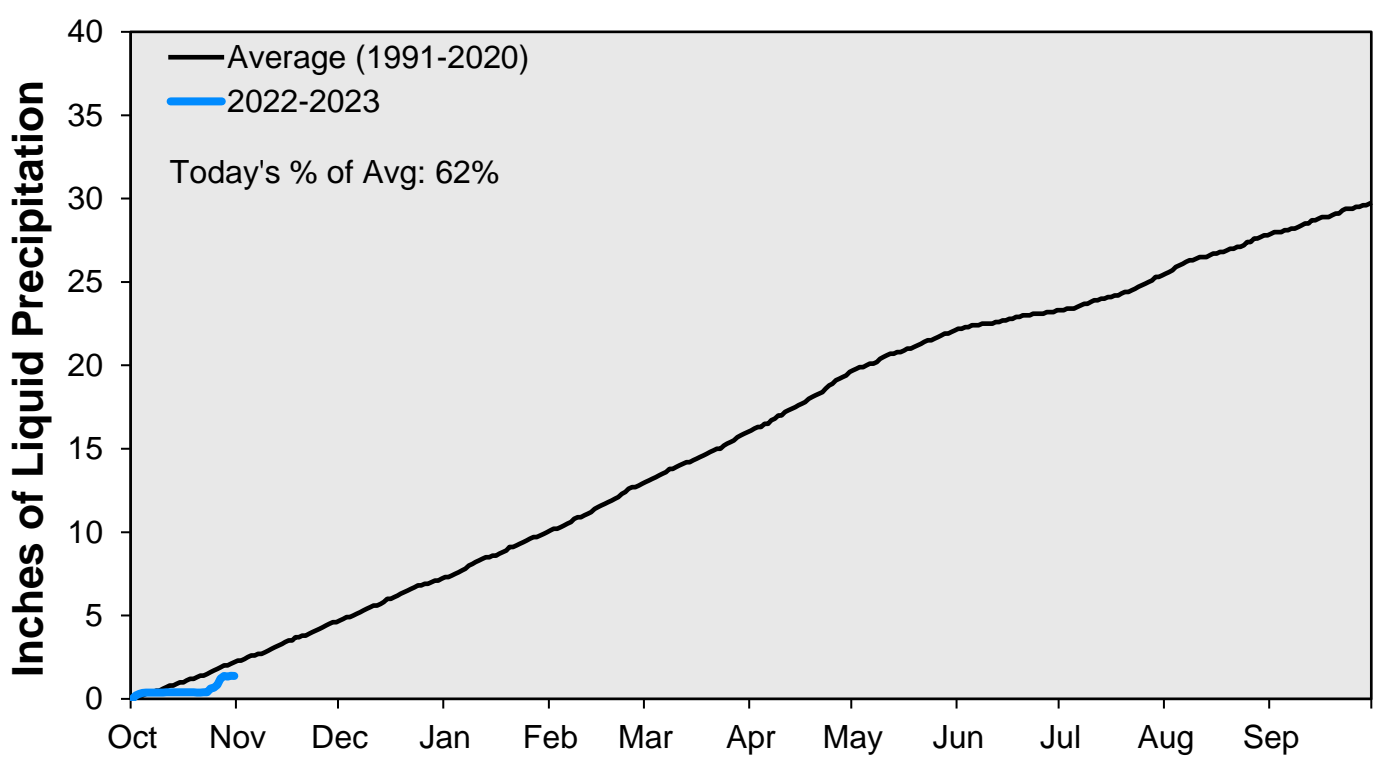
October Precipitation



CUMULATIVE PRECIPITATION: SOUTH PLATTE RIVER

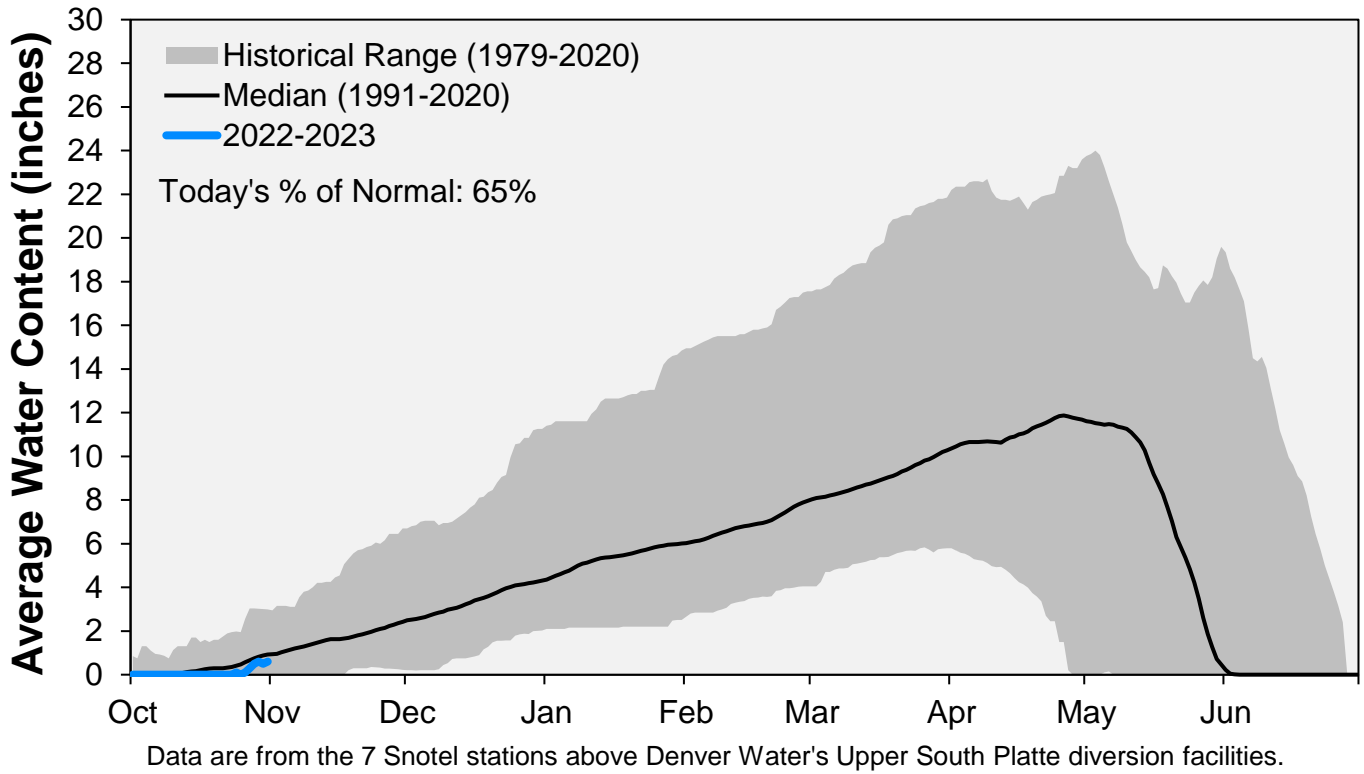


CUMULATIVE PRECIPITATION: COLORADO RIVER WATERSHED

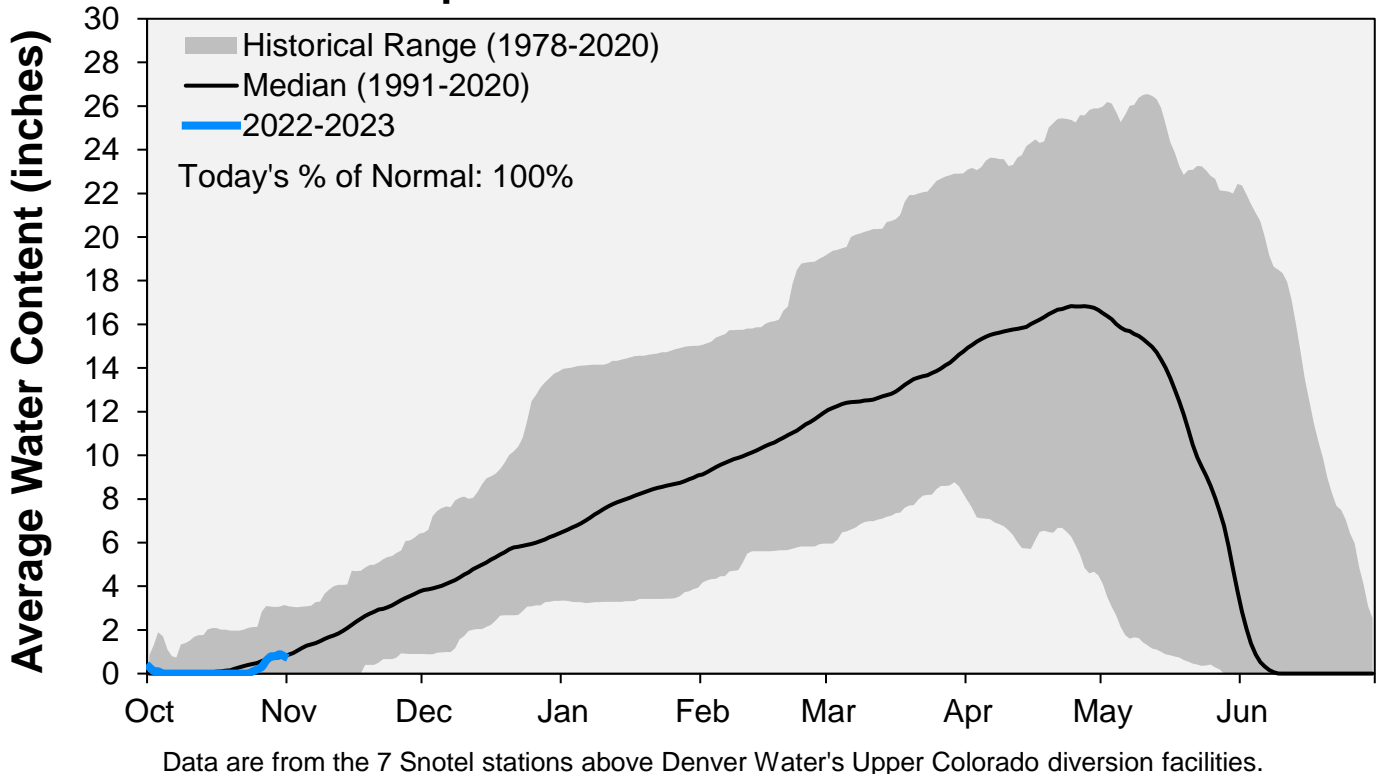


Data are from the 7 SNOTEL stations above Denver Water's Upper Colorado diversion facilities.

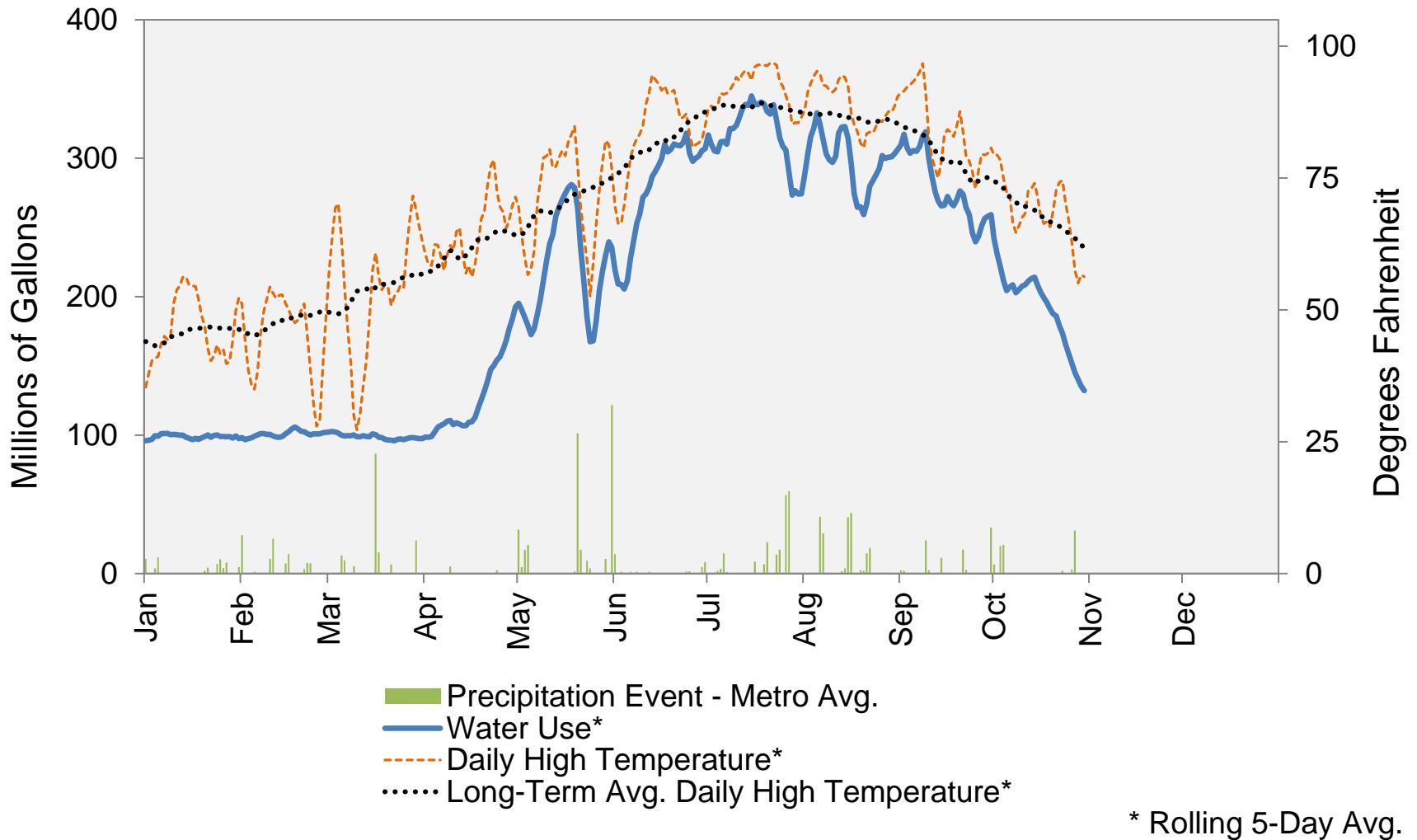
Snowpack: South Platte River Watershed



Snowpack: Colorado River Watershed



2022 Water Use and Weather Conditions



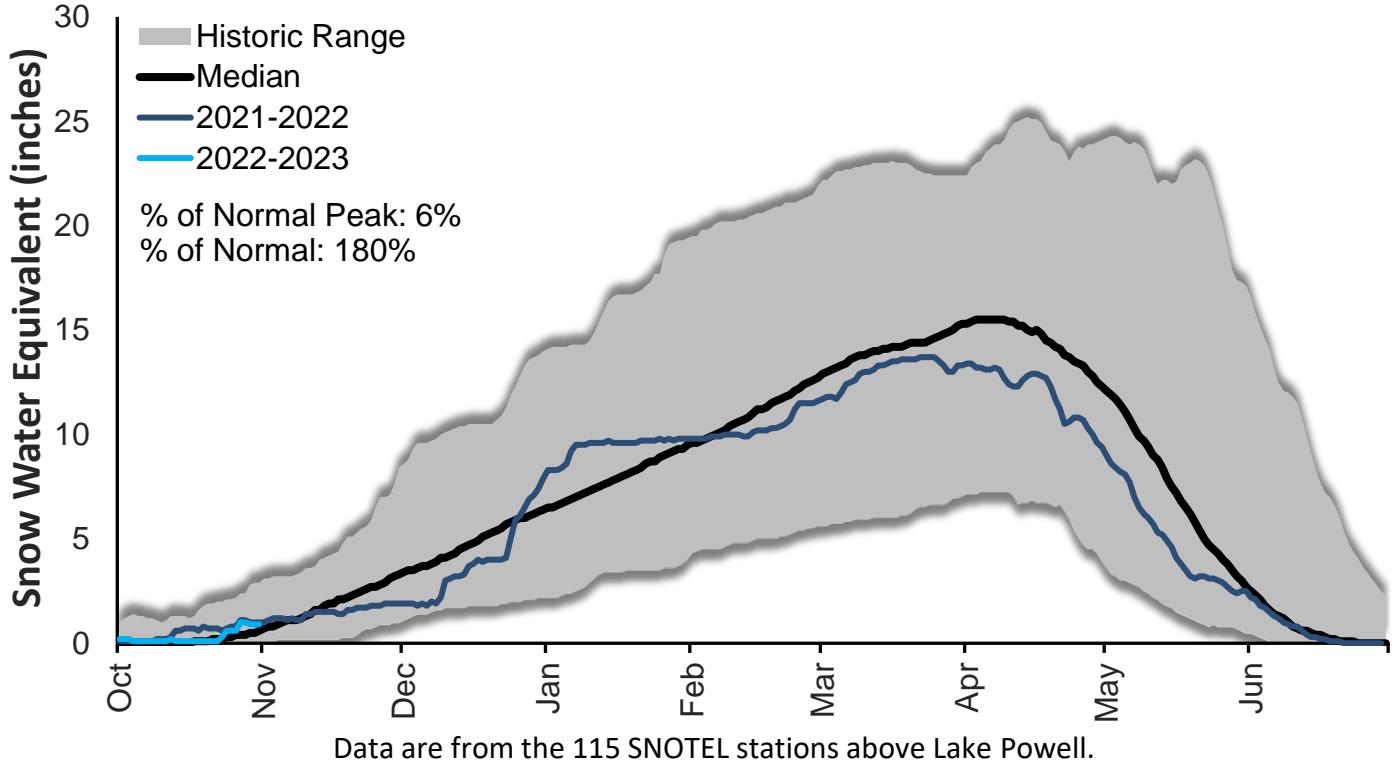
October 31, 2022

| Denver Water Use and Reservoir Contents 2022 | | | | | | | | | | | | | |
|--|---------|---------|---------|---------|---------|---------|---------|---------|---------|------|-----|-----|---------|
| | Jan | Feb | Mar | Apr | May | Jun | Jul | Aug | Sep | Oct | Nov | Dec | YTD-Avg |
| Predicted End-of-Month Supply Reservoir Contents (Full = 518,449 AF) | 441,900 | | | | | | | | | | | | |
| Actual End-of-Month Supply Reservoir Contents (AF) | 425,595 | 421,903 | 415,083 | 407,905 | 438,115 | 474,473 | 472,785 | 466,519 | 451,255 | | | | |
| Actual % Full | 82% | 81% | 80% | 79% | 85% | 92% | 91% | 90% | 87% | | | | |
| Historical Median % Full | 81% | 80% | 79% | 79% | 88% | 98% | 95% | 92% | 88% | 85% | 84% | 83% | |
| 2022 Expected Daily Use (MG) | 105 | 104 | 102 | 120 | 157 | 257 | 298 | 292 | 270 | 158 | 105 | 101 | 187 |
| Actual Daily Use (MG) | 1 | 92 | 98 | 102 | 102 | 192 | 182 | 318 | 344 | 309 | 194 | | |
| | 2 | 100 | 95 | 101 | 102 | 169 | 186 | 304 | 312 | 324 | 199 | | |
| | 3 | 100 | 100 | 101 | 99 | 166 | 223 | 291 | 340 | 272 | 221 | | |
| | 4 | 105 | 105 | 100 | 109 | 165 | 229 | 338 | 319 | 286 | 195 | | |
| | 5 | 99 | 97 | 95 | 118 | 171 | 237 | 308 | 348 | 336 | 212 | | |
| | 6 | 101 | 103 | 100 | 108 | 214 | 263 | 321 | 300 | 306 | 207 | | |
| | 7 | 100 | 100 | 102 | 107 | 222 | 250 | 294 | 261 | 342 | 207 | | |
| | 8 | 101 | 100 | 101 | 108 | 217 | 286 | 347 | 287 | 310 | 193 | | |
| | 9 | 101 | 102 | 103 | 112 | 236 | 262 | 337 | 297 | 302 | 207 | | |
| D | 10 | 99 | 98 | 88 | 103 | 241 | 298 | 320 | 341 | 239 | 224 | | |
| A | 11 | 100 | 97 | 100 | 115 | 275 | 276 | 348 | 321 | 240 | 212 | | |
| Y | 12 | 98 | 96 | 105 | 102 | 253 | 275 | 326 | 345 | 288 | 221 | | |
| | 13 | 101 | 99 | 98 | 103 | 285 | 323 | 363 | 309 | 276 | 202 | | |
| O | 14 | 93 | 105 | 102 | 112 | 268 | 281 | 333 | 298 | 283 | 212 | | |
| F | 15 | 96 | 108 | 99 | 116 | 269 | 319 | 355 | 299 | 242 | 195 | | |
| | 16 | 96 | 105 | 97 | 116 | 297 | 301 | 317 | 228 | 272 | 186 | | |
| M | 17 | 103 | 106 | 96 | 118 | 273 | 327 | 326 | 238 | 266 | 201 | | |
| O | 18 | 96 | 106 | 97 | 137 | 297 | 295 | 373 | 260 | 265 | 184 | | |
| N | 19 | 100 | 98 | 96 | 140 | 257 | 290 | 326 | 301 | 305 | 189 | | |
| T | 20 | 100 | 99 | 97 | 148 | 194 | 338 | 328 | 270 | 274 | 178 | | |
| H | 21 | 102 | 102 | 96 | 152 | 156 | 297 | 307 | 265 | 260 | 178 | | |
| | 22 | 95 | 100 | 94 | 160 | 153 | 325 | 360 | 303 | 218 | 166 | | |
| | 23 | 102 | 102 | 102 | 151 | 167 | 308 | 316 | 281 | 240 | 156 | | |
| | 24 | 102 | 102 | 98 | 159 | 167 | 323 | 262 | 322 | 239 | 151 | | |
| | 25 | 95 | 99 | 93 | 160 | 198 | 265 | 299 | 293 | 242 | 143 | | |
| | 26 | 101 | 103 | 101 | 178 | 228 | 269 | 293 | 312 | 281 | 144 | | |
| | 27 | 94 | 104 | 97 | 194 | 262 | 336 | 277 | 292 | 254 | 132 | | |
| | 28 | 103 | 103 | 102 | 192 | 239 | 316 | 235 | 286 | 268 | 131 | | |
| | 29 | 96 | | 96 | 194 | 224 | 342 | 279 | 322 | 246 | 128 | | |
| | 30 | 102 | | 92 | 204 | 245 | 272 | 286 | 305 | 248 | 126 | | |
| | 31 | 91 | | 101 | | 208 | | 294 | 327 | | | | |
| Monthly Average | 99 | 101 | 98 | 134 | 223 | 283 | 315 | 301 | 274 | 183 | | | 202 |
| % of 2022 Expected Daily Use | 94% | 97% | 97% | 112% | 142% | 110% | 106% | 103% | 102% | 116% | | | 108% |

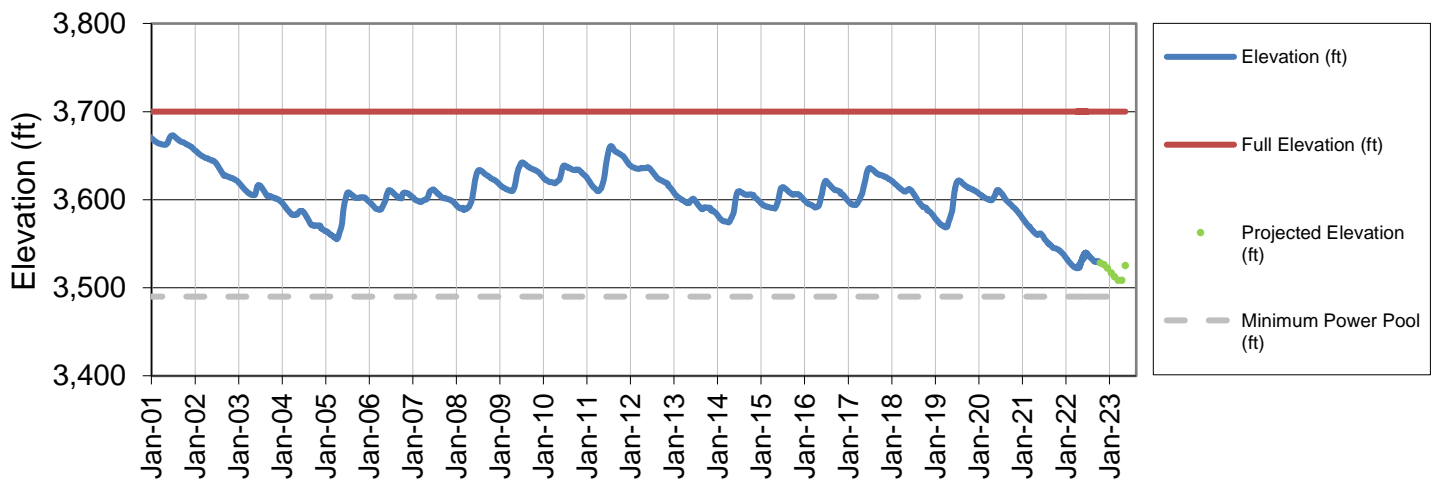
Notes: 1) "AF" denotes acre-feet. "MG" denotes million gallons. 2) Expected Daily Use is based on historical use with normal weather conditions. 3) The predicted end-of-month supply reservoir contents figures assume normal weather after October 3rd, 2022. 4) The differences between predicted and actual end-of-month supply reservoir contents are the result of normal estimation error of daily use, supply, evaporation, carriage losses and raw water deliveries. 5) Predicted supply reservoir contents last updated on October 3rd, 2022. 6) Daily water figures are subject to change.

Lake Powell Report*

Colorado River Above Lake Powell Snowpack



Lake Powell Elevation (2001-Current)



* Denver Water gets half of its water supply from the Colorado River and closely monitors conditions at Lake Powell and within the greater Colorado River Basin.