



WATER WATCH REPORT

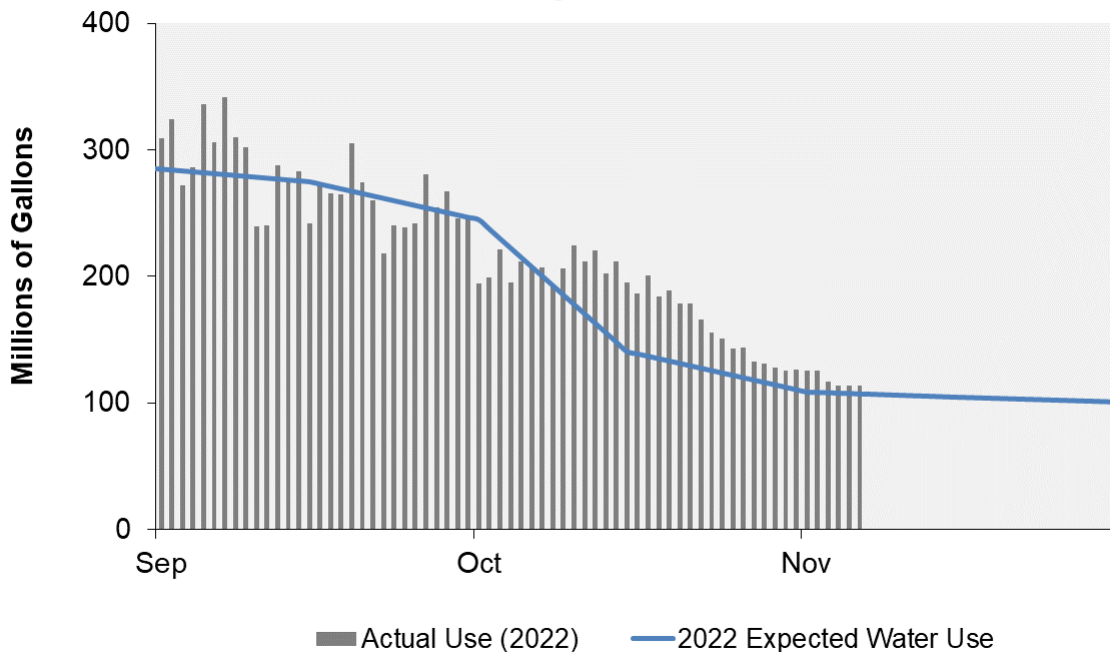
November 7, 2022

Supply Reservoir Contents

Reservoir	Capacity		Current Usable Contents (acre-feet)	Percent Full		
	(acre-feet)			Current	Last	Historical
	Total	Usable	Year		Median	
Antero	20,122	20,067	20,042	100%	98%	100%
Eleven Mile	97,779	97,779	100,692	103%	102%	101%
Cheesman	79,064	79,064	67,721	86%	94%	81%
Marston	19,108	13,133	9,187	70%	85%	40%
Strontia Springs	7,863	7,163	6,300	88%	86%	93%
Chatfield	28,709	12,415	4,346	35%	40%	51%
Dillon	257,304	249,095	216,247	87%	80%	95%
Gross*	41,811	29,811	15,477	52%	77%	68%
Ralston	10,776	7,276	5,423	75%	0%	61%
Meadow Creek	5,370	4,520	123	3%	45%	23%
Total	567,906	520,323	445,559	86%	85%	85%

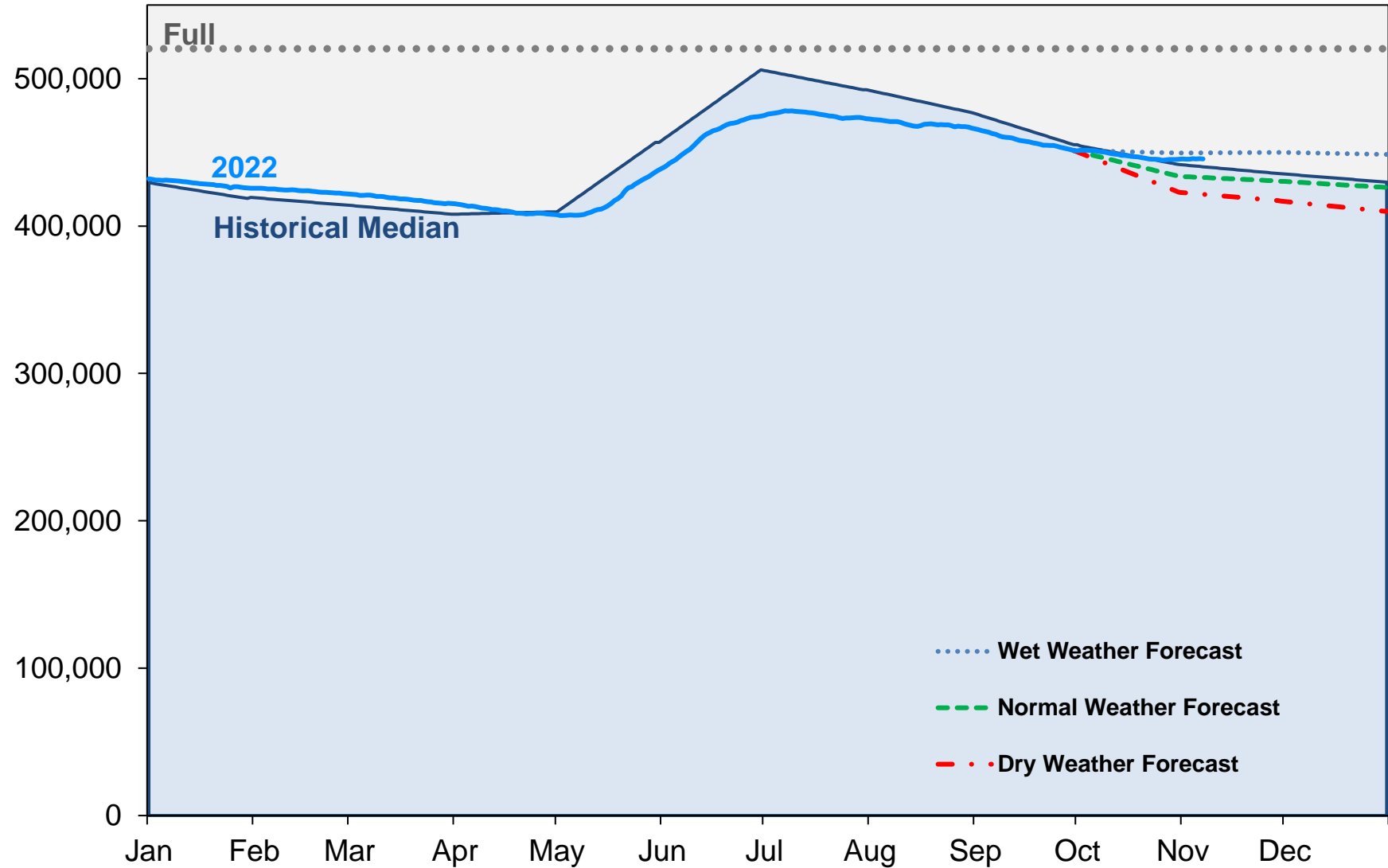
*Gross Reservoir storage is limited to 29,938 acre feet in total storage during construction activities. The percent full figures are based on the normal usable capacity of 29,811 acre feet.

Daily Use



Supply Reservoir Contents

Acre-Feet

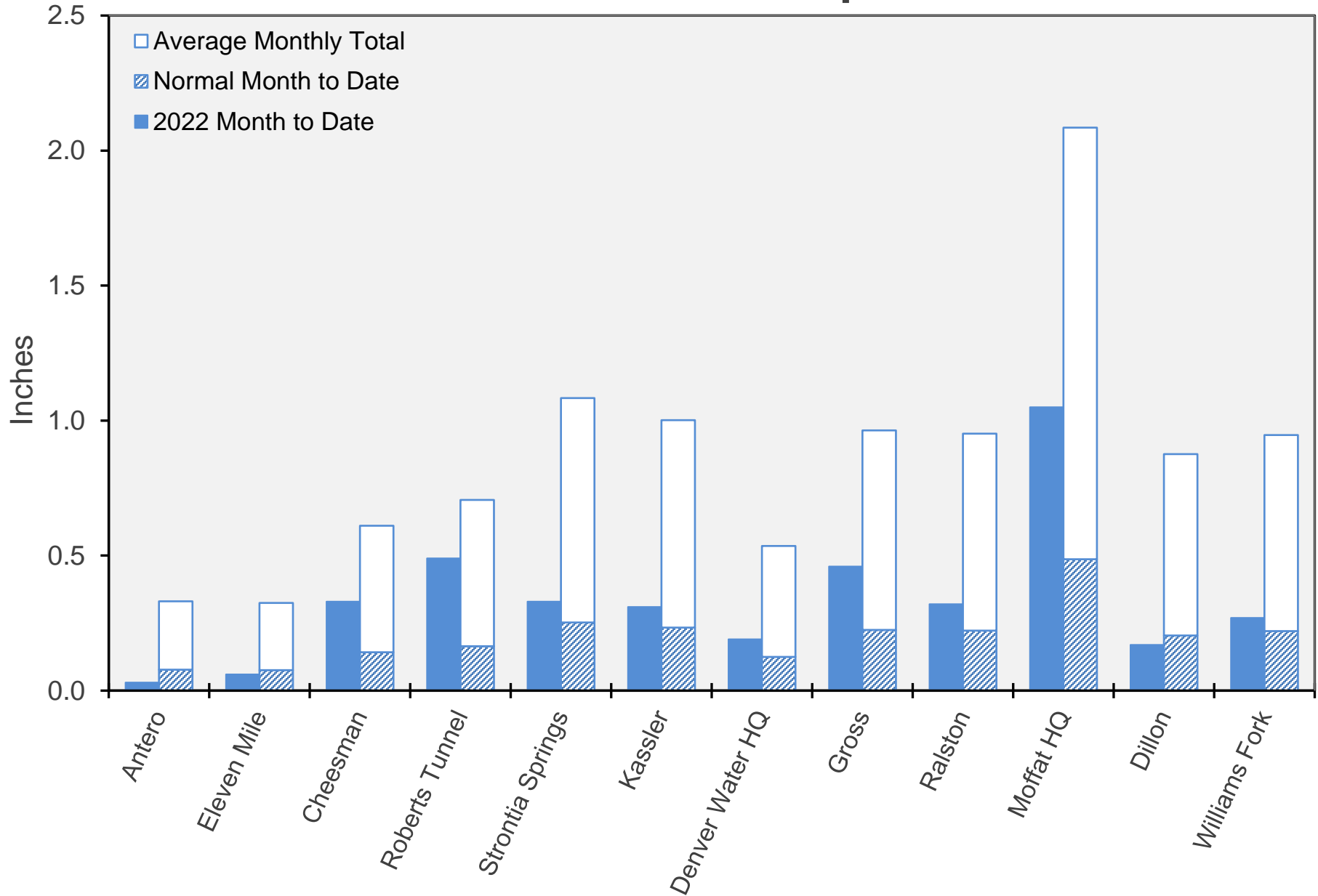


Note: Denver Water forecasts seasonal reservoir storage contents under dry future weather, normal future weather and wet future weather scenarios.

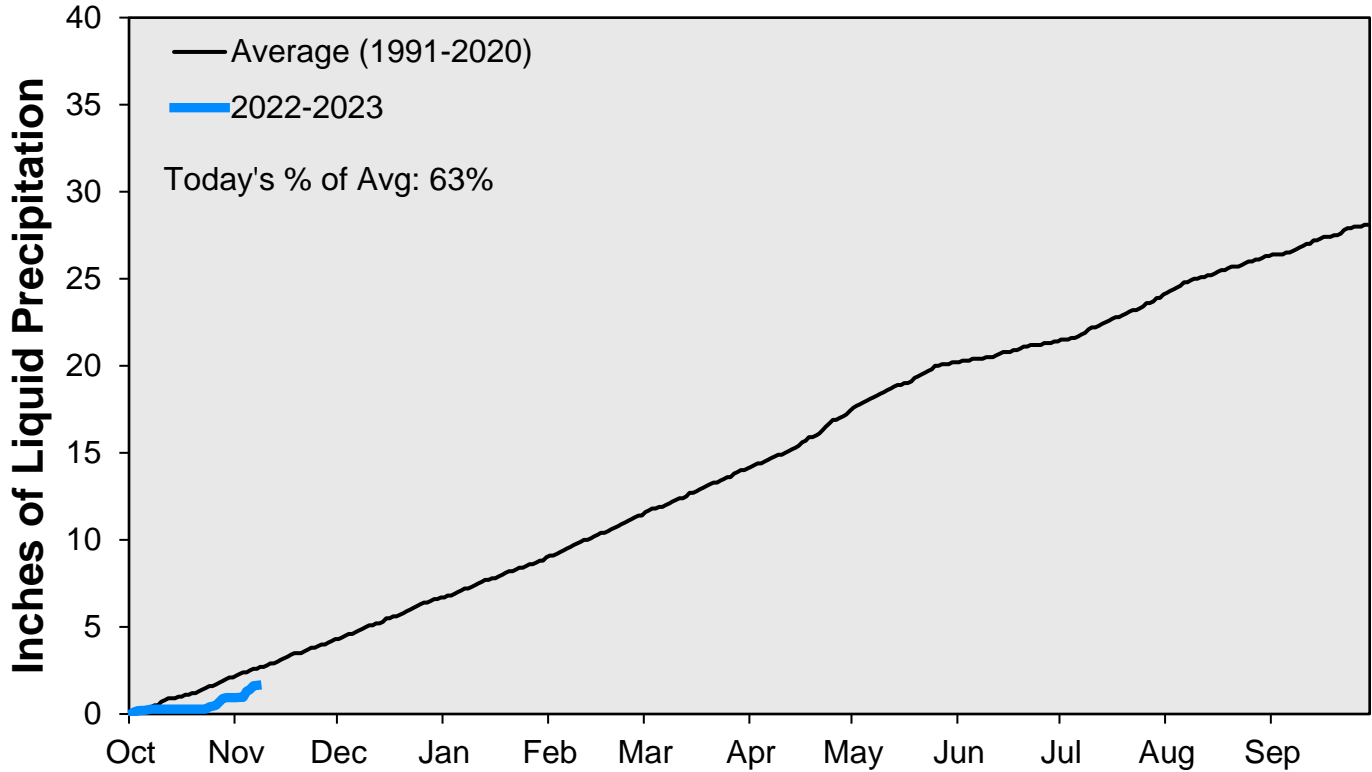
Gross Reservoir storage is limited to 29,938 acre feet in total storage during construction activities. The percent full figures are based on the normal usable capacity of 29,811 acre feet.

November 7, 2022

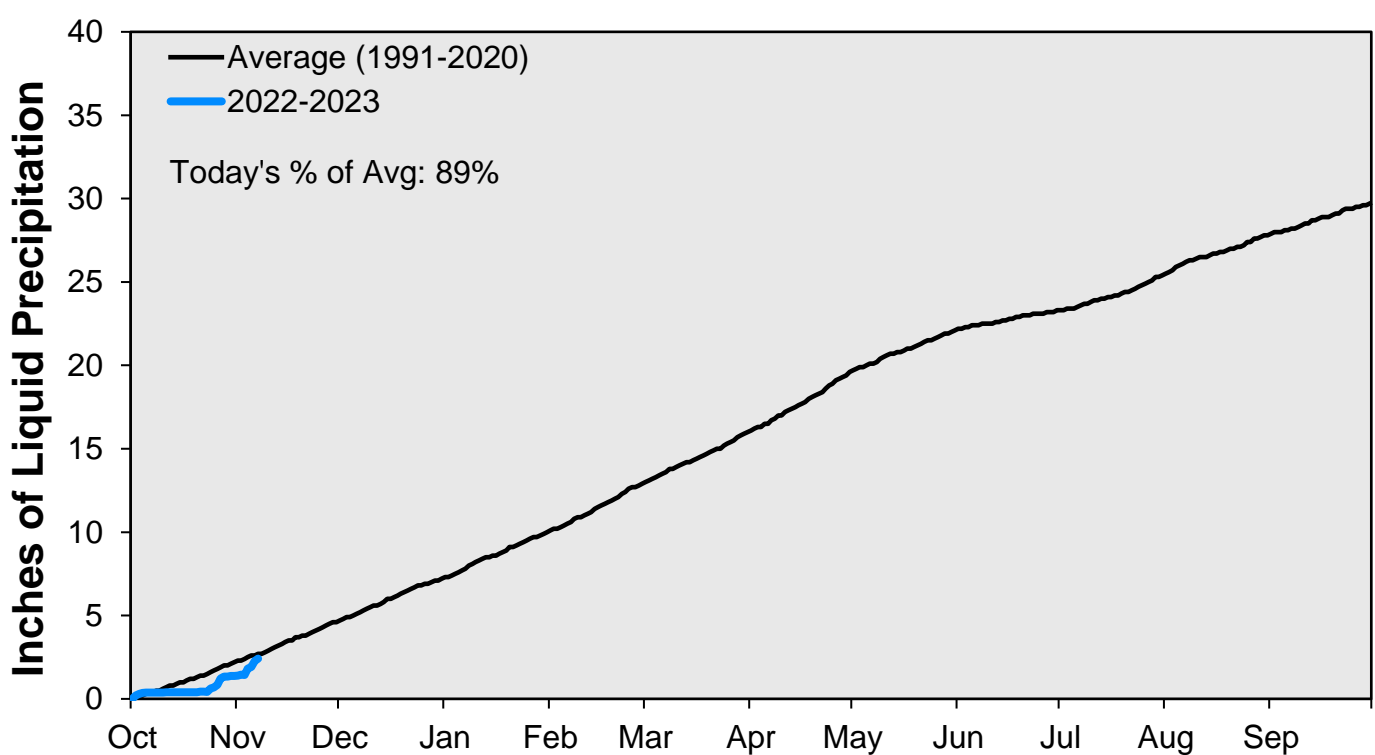
November Precipitation



CUMULATIVE PRECIPITATION: SOUTH PLATTE RIVER

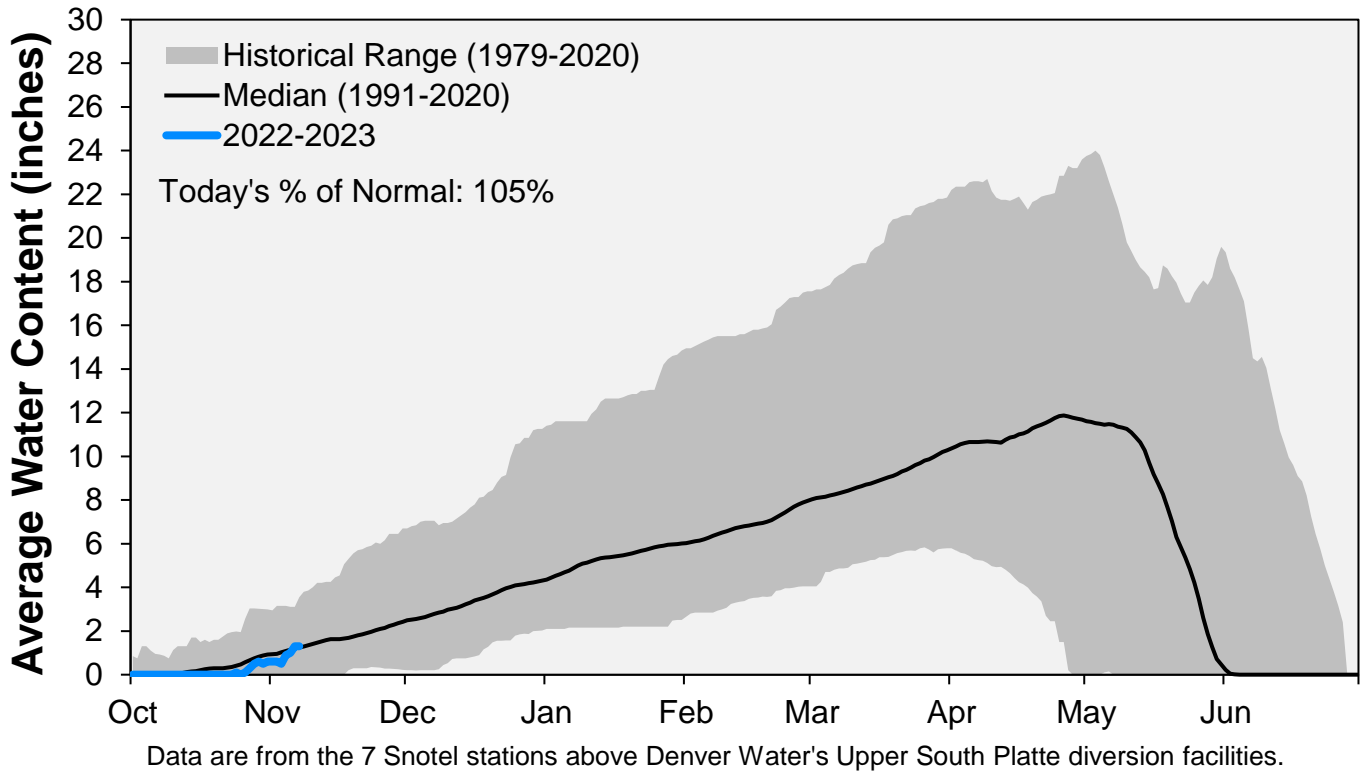


CUMULATIVE PRECIPITATION: COLORADO RIVER WATERSHED

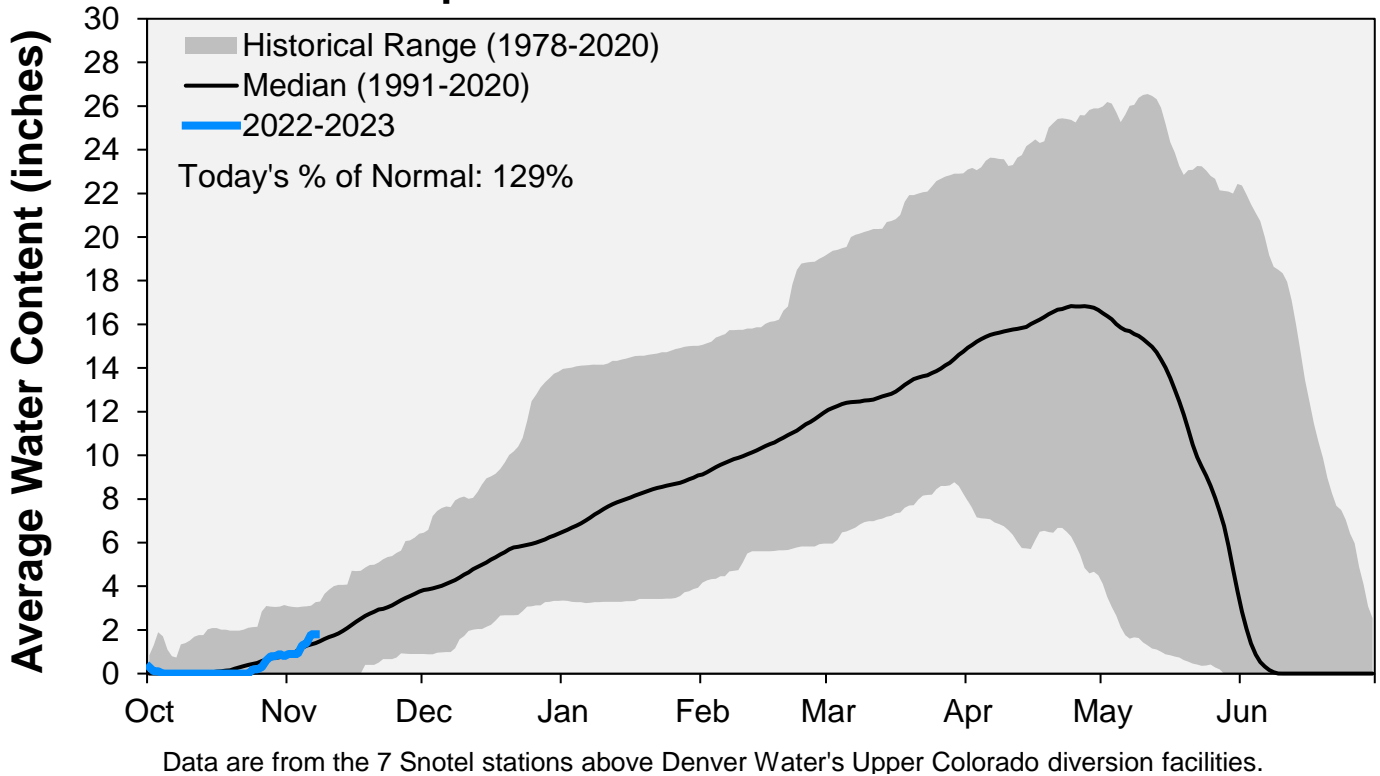


Data are from the 7 SNOTEL stations above Denver Water's Upper Colorado diversion facilities.

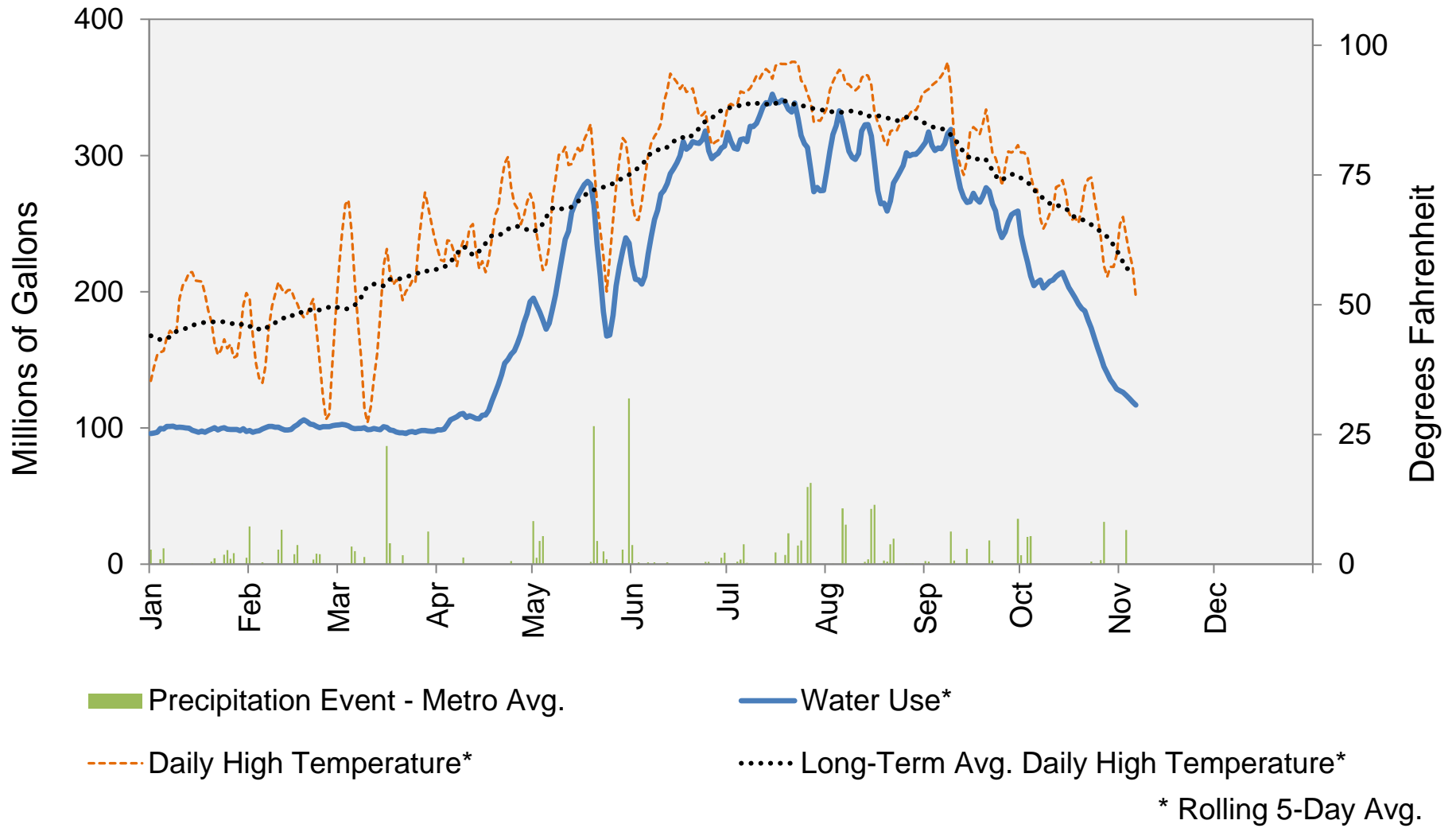
Snowpack: South Platte River Watershed



Snowpack: Colorado River Watershed



2022 Water Use and Weather Conditions



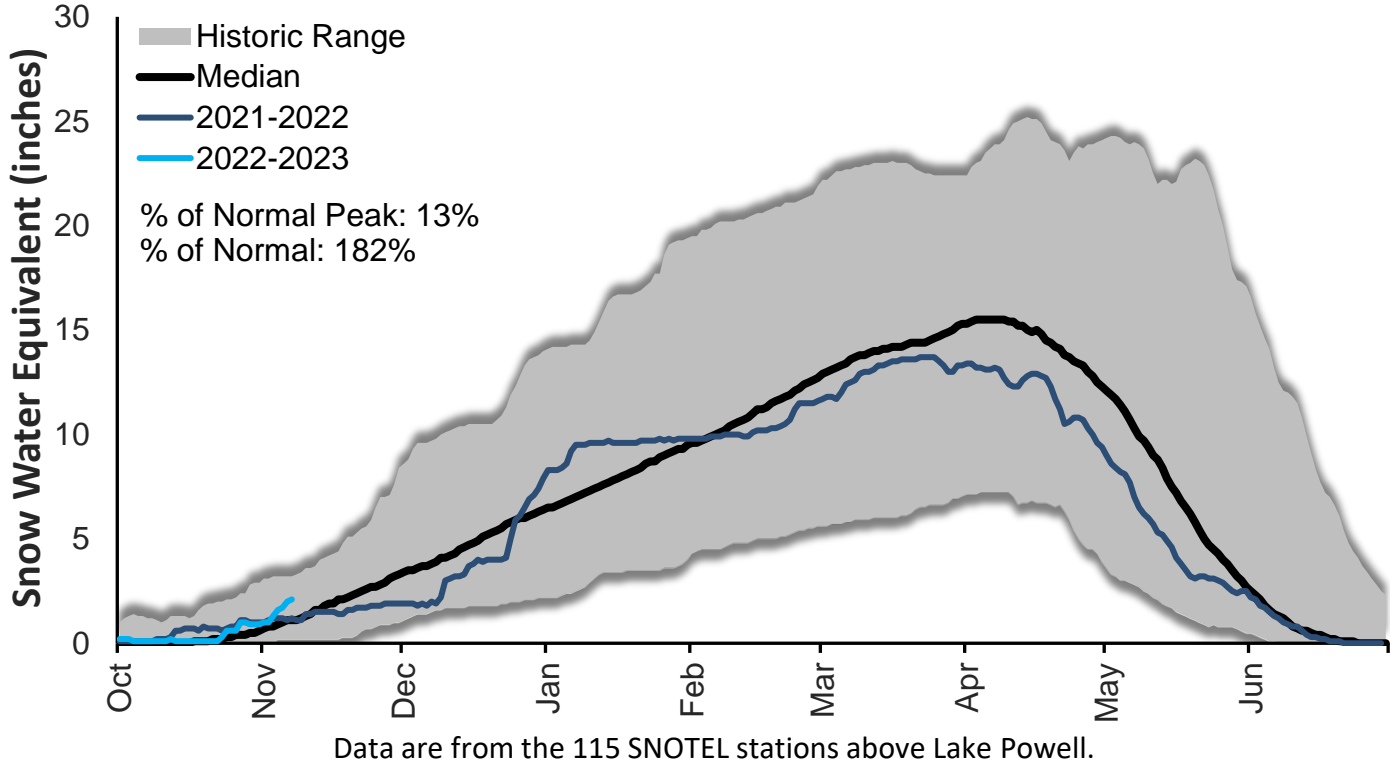
Denver Water Use and Reservoir Contents 2022

	Jan	Feb	Mar	Apr	May	Jun	Jul	Aug	Sep	Oct	Nov	Dec	YTD-Avg
Predicted End-of-Month Supply Reservoir Contents (Full = 518,449 AF)													445,400
Actual End-of-Month Supply Reservoir Contents (AF)	425,595	421,903	415,083	407,905	438,115	474,473	472,785	466,519	451,255	445,464			
Actual % Full	82%	81%	80%	79%	85%	92%	91%	90%	87%	86%			
Historical Median % Full	81%	80%	79%	79%	88%	98%	95%	92%	88%	85%	84%	83%	
2022 Expected Daily Use (MG)	105	104	102	120	157	257	298	292	270	158	105	101	185
Actual Daily Use (MG)	1	92	98	102	102	192	182	318	344	309	194	126	
	2	100	95	101	102	169	186	304	312	324	199	126	
	3	100	100	101	99	166	223	291	340	272	221	117	
	4	105	105	100	109	165	229	338	319	286	195	114	
	5	99	97	95	118	171	237	308	348	336	212	114	
	6	101	103	100	108	214	263	321	300	306	207	114	
	7	100	100	102	107	222	250	294	261	342	207		
	8	101	100	101	108	217	286	347	287	310	193		
	9	101	102	103	112	236	262	337	297	302	207		
	D 10	99	98	88	103	241	298	320	341	239	224		
	A 11	100	97	100	115	275	276	348	321	240	212		
	Y 12	98	96	105	102	253	275	326	345	288	221		
		13	101	99	98	103	285	323	363	309	276	202	
	O 14	93	105	102	112	268	281	333	298	283	212		
	F 15	96	108	99	116	269	319	355	299	242	195		
		16	96	105	97	116	297	301	317	228	272	186	
	M 17	103	106	96	118	273	327	326	238	266	201		
	O 18	96	106	97	137	297	295	373	260	265	184		
	N 19	100	98	96	140	257	290	326	301	305	189		
	T 20	100	99	97	148	194	338	328	270	274	178		
	H 21	102	102	96	152	156	297	307	265	260	178		
		22	95	100	94	160	153	325	360	303	218	166	
		23	102	102	102	151	167	308	316	281	240	156	
		24	102	102	98	159	167	323	262	322	239	151	
		25	95	99	93	160	198	265	299	293	242	143	
		26	101	103	101	178	228	269	293	312	281	144	
		27	94	104	97	194	262	336	277	292	254	132	
		28	103	103	102	192	239	316	235	286	268	131	
		29	96		96	194	224	342	279	322	246	128	
		30	102		92	204	245	272	286	305	248	126	
		31	91		101	208		294	327		126		
Monthly Average	99	101	98	134	223	283	315	301	274	181	118		200
% of 2022 Expected Daily Use	94%	97%	97%	112%	142%	110%	106%	103%	102%	115%	113%		108%

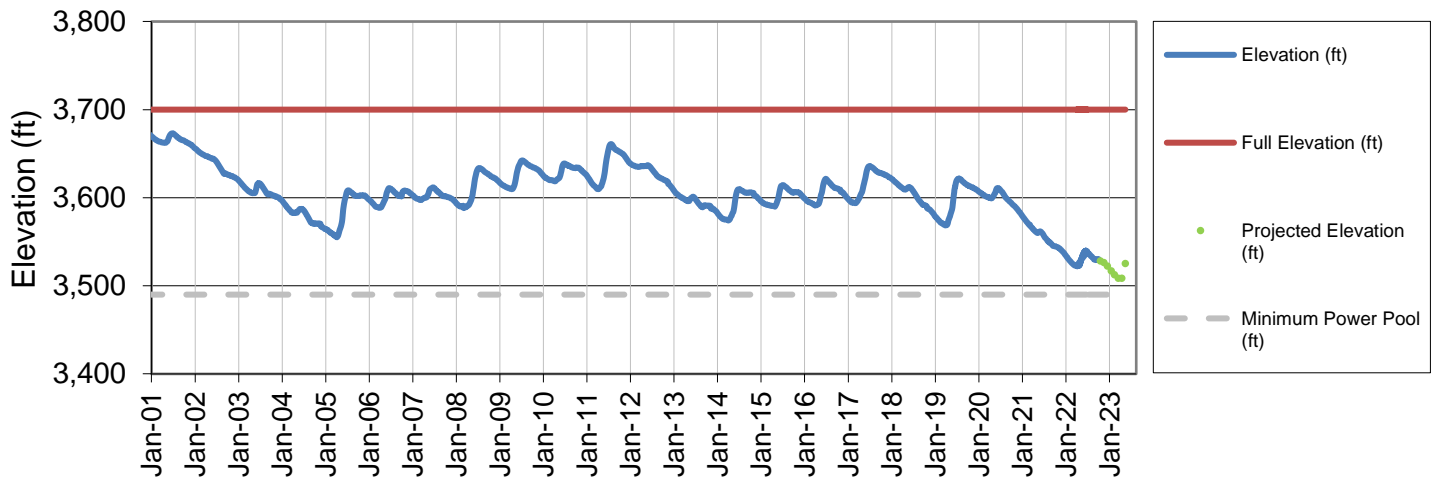
Notes: 1) "AF" denotes acre-feet. "MG" denotes million gallons. 2) Expected Daily Use is based on historical use with normal weather conditions. 3) The predicted end-of-month supply reservoir contents figures assume normal weather after October 3rd, 2022. 4) The differences between predicted and actual end-of-month supply reservoir contents are the result of normal estimation error of daily use, supply, evaporation, carriage losses and raw water deliveries. 5) Predicted supply reservoir contents last updated on October 3rd, 2022. 6) Daily water figures are subject to change.

Lake Powell Report*

Colorado River Above Lake Powell Snowpack



Lake Powell Elevation (2001-Current)



* Denver Water gets half of its water supply from the Colorado River and closely monitors conditions at Lake Powell and within the greater Colorado River Basin.