



WATER WATCH REPORT

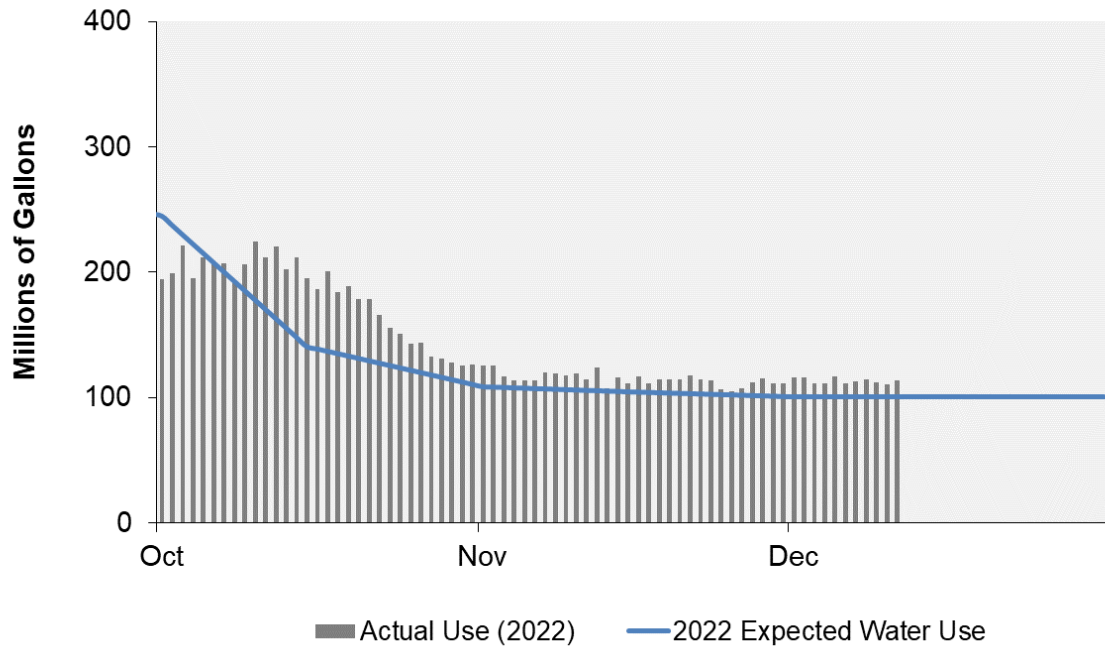
December 12, 2022

Supply Reservoir Contents

Reservoir	Capacity		Current Usable Contents (acre-feet)	Percent Full		
	(acre-feet)			Current	Last Year	Historical Median
	Total	Usable				
Antero	20,122	20,067	20,064	100%	99%	100%
Eleven Mile	97,779	97,779	100,312	103%	102%	102%
Cheesman	79,064	79,064	69,945	88%	94%	83%
Marston	19,108	13,133	9,306	71%	87%	60%
Strontia Springs	7,863	7,163	6,374	89%	85%	92%
Chatfield	28,709	12,415	5,981	48%	54%	57%
Dillon	257,304	249,095	207,897	83%	77%	93%
Gross*	41,811	29,811	11,097	37%	76%	58%
Ralston	10,776	7,276	6,050	83%	0%	70%
Meadow Creek	5,370	4,520	147	3%	67%	19%
Total	567,906	520,323	437,174	84%	84%	84%

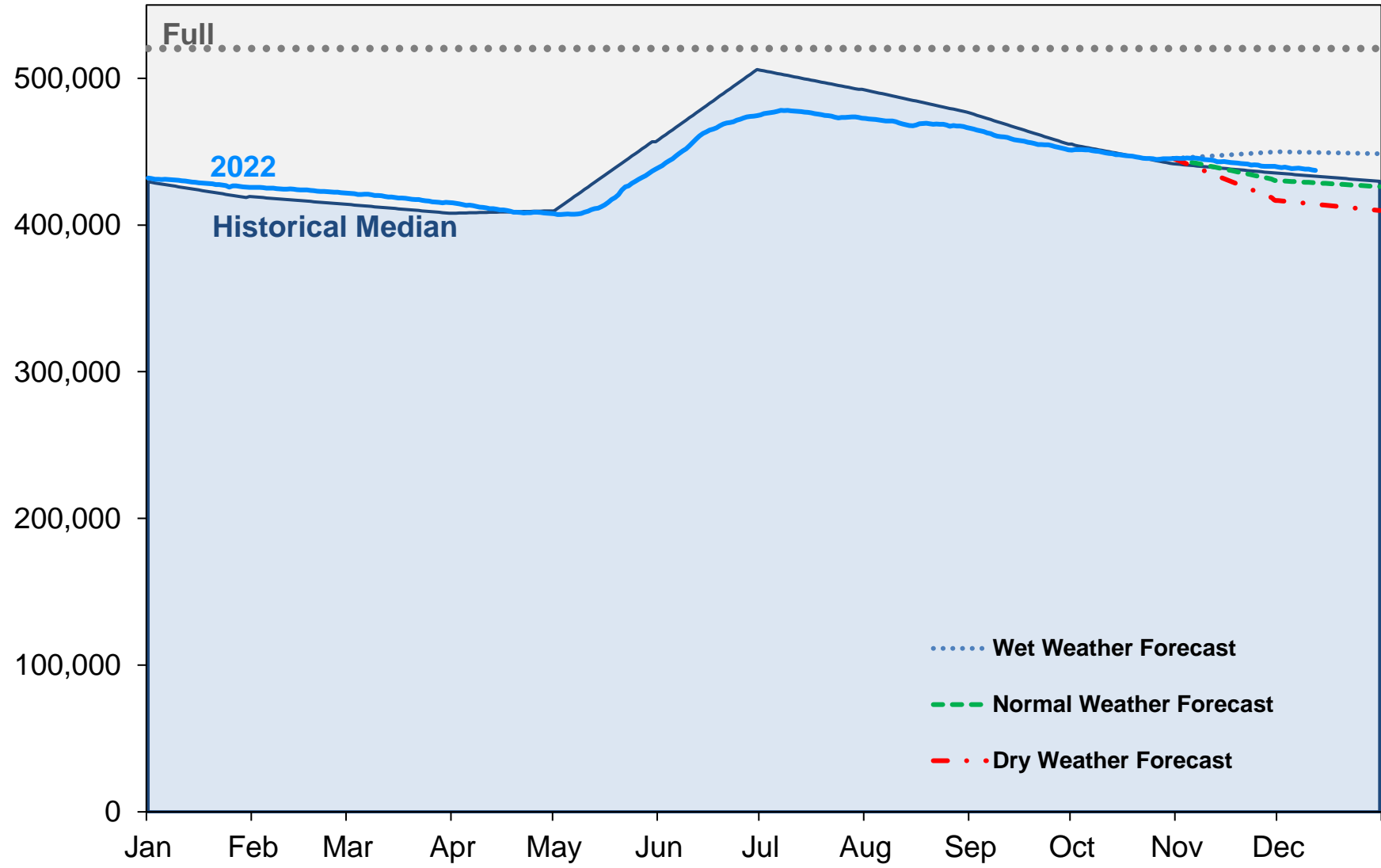
*Gross Reservoir storage is limited to 29,938 acre feet in total storage during construction activities. The percent full figures are based on the normal usable capacity of 29,811 acre feet.

Daily Use



Supply Reservoir Contents

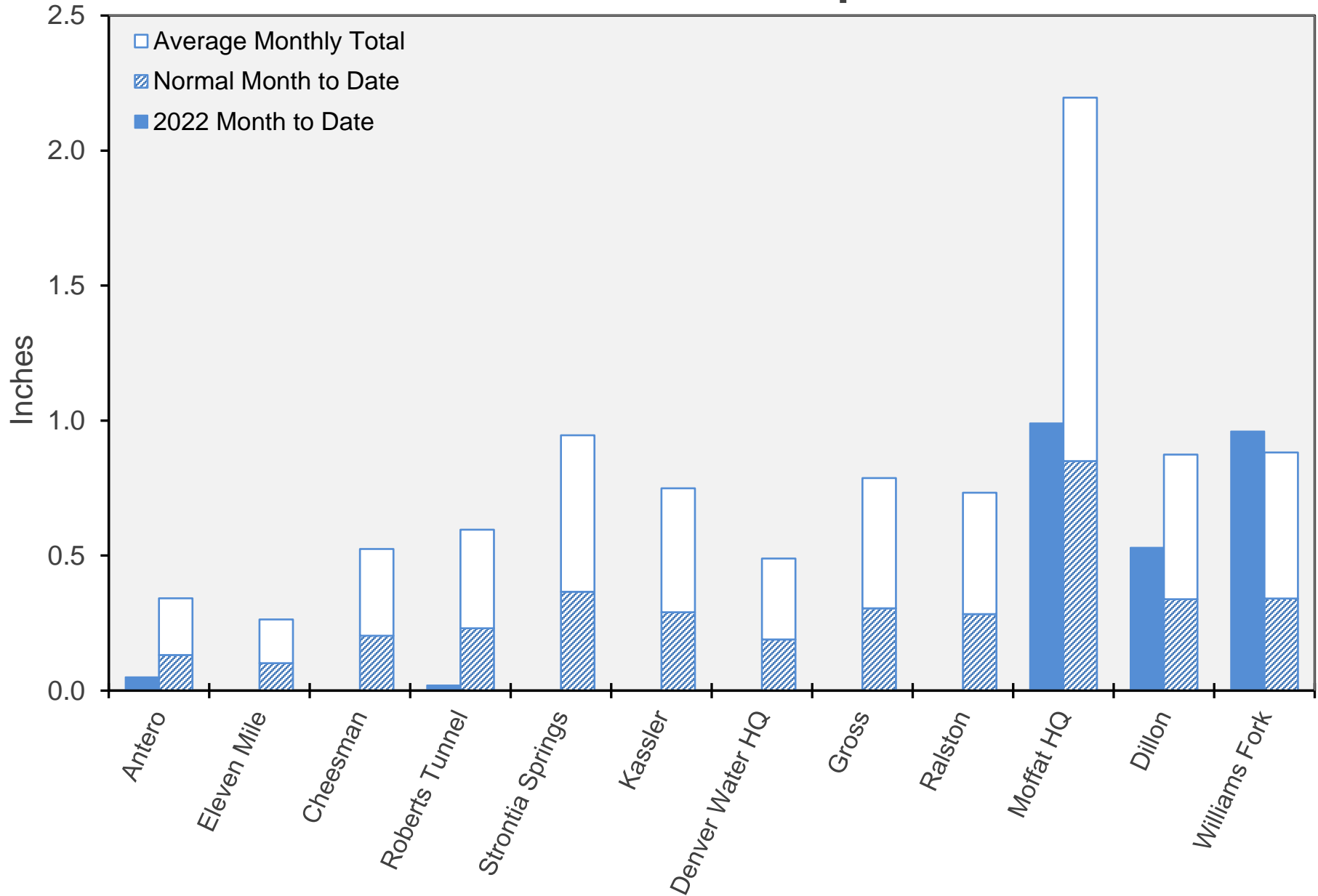
Acre-Feet



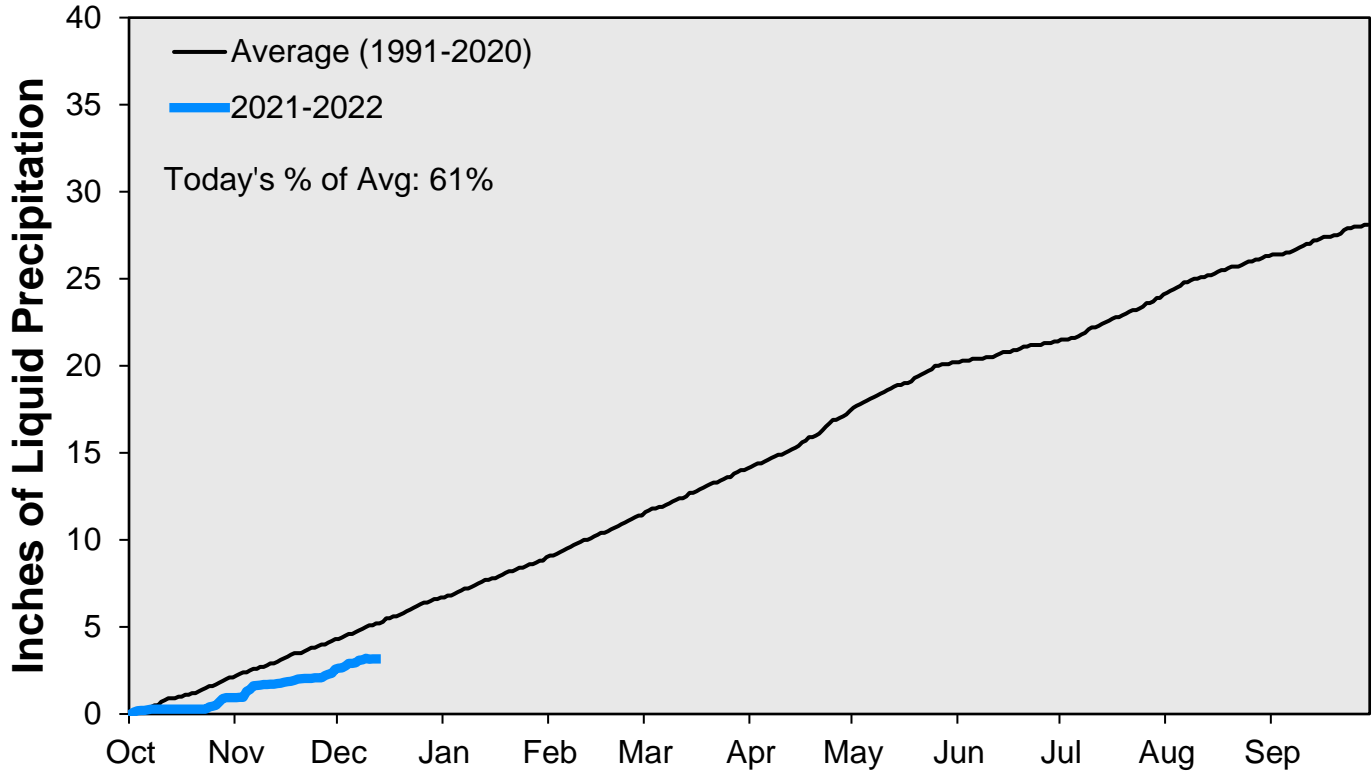
Note: Denver Water forecasts seasonal reservoir storage contents under dry future weather, normal future weather and wet future weather scenarios.

Gross Reservoir storage is limited to 29,938 acre feet in total storage during construction activities. The percent full figures are based on the normal usable capacity of 29,811 acre feet.

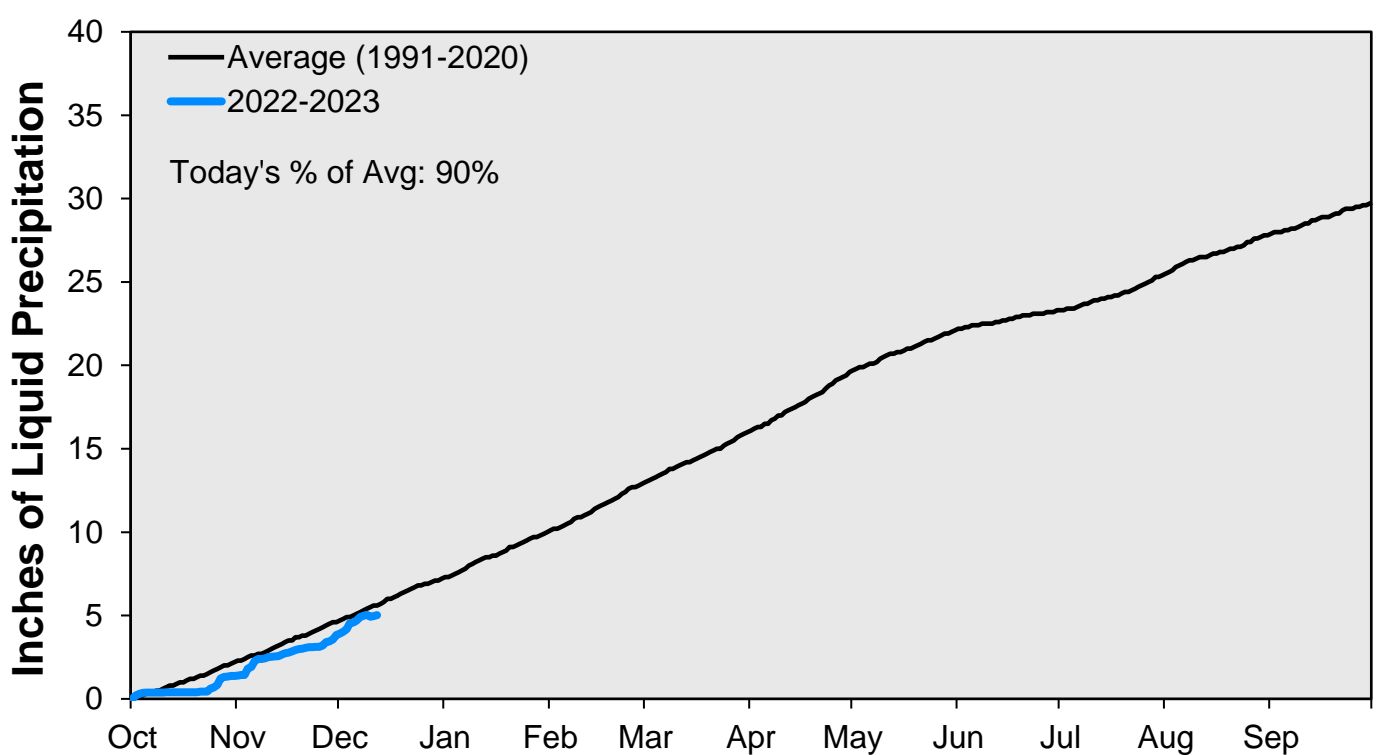
December Precipitation



CUMULATIVE PRECIPITATION: SOUTH PLATTE RIVER

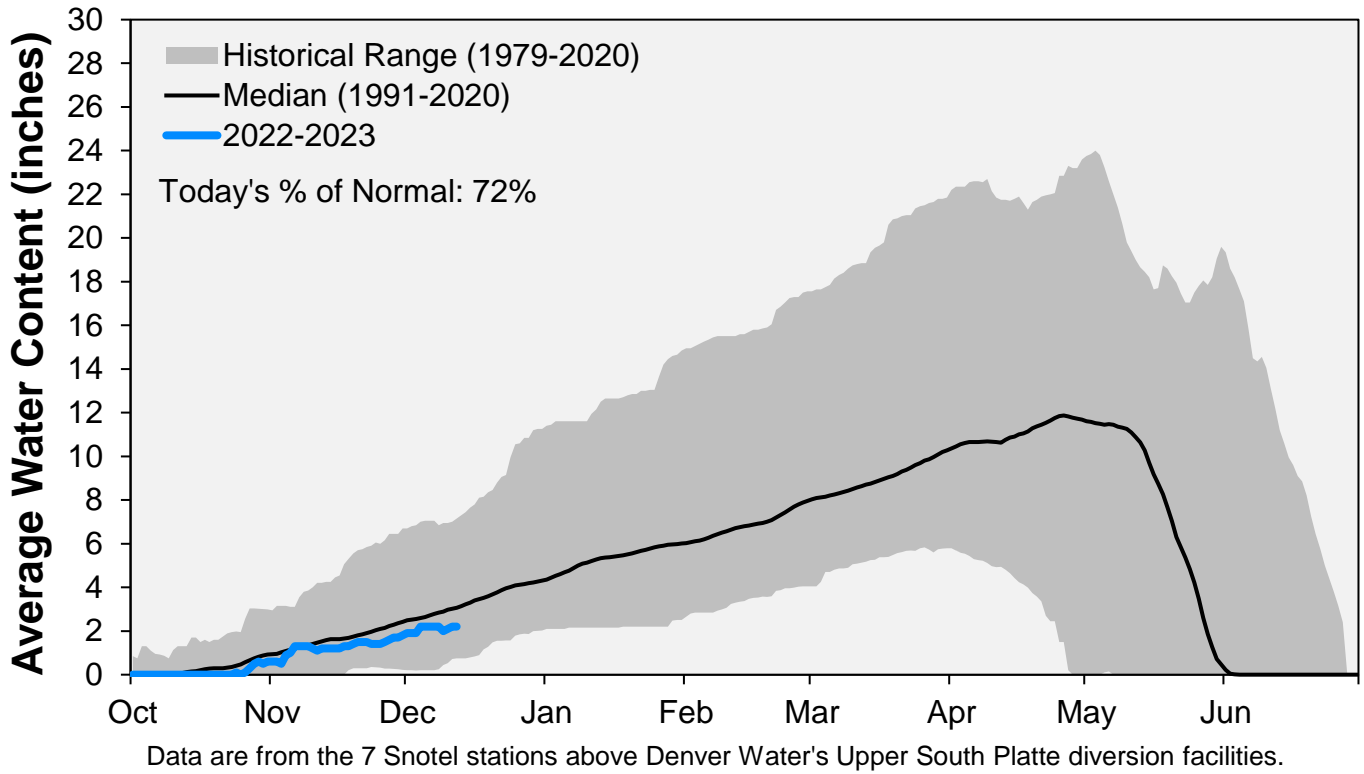


CUMULATIVE PRECIPITATION: COLORADO RIVER WATERSHED

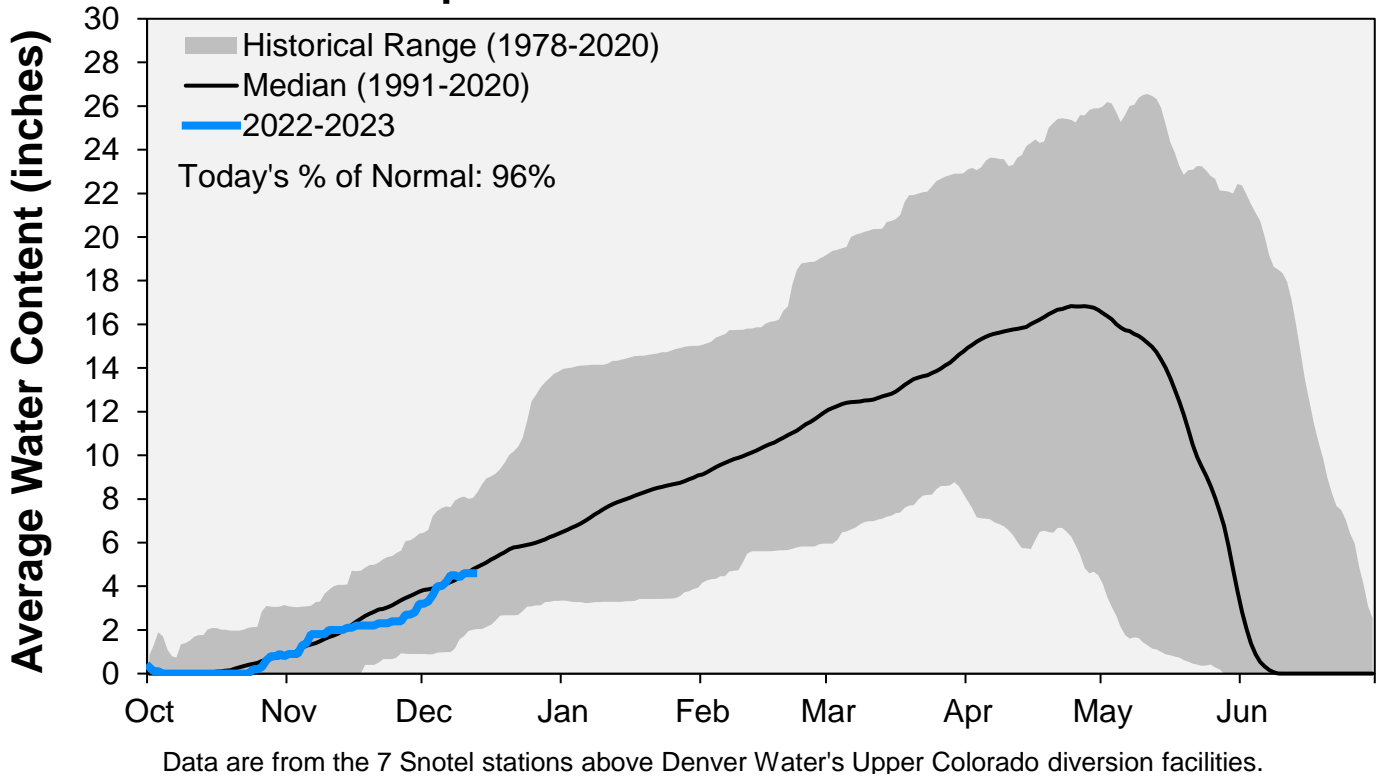


Data are from the 7 SNOTEL stations above Denver Water's Upper Colorado diversion facilities.

Snowpack: South Platte River Watershed



Snowpack: Colorado River Watershed



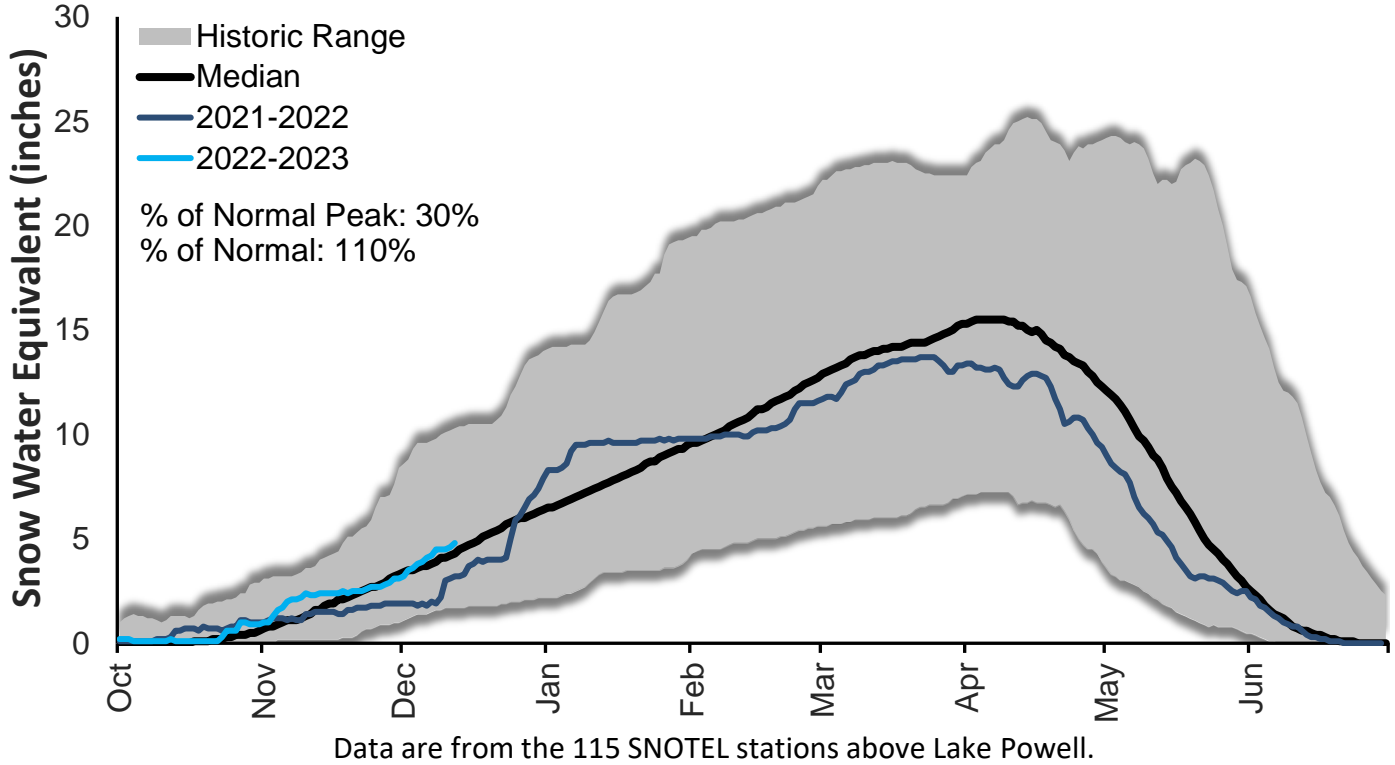
December 12, 2022

Denver Water Use and Reservoir Contents 2022													
	Jan	Feb	Mar	Apr	May	Jun	Jul	Aug	Sep	Oct	Nov	Dec	YTD-Avg
Predicted End-of-Month Supply Reservoir Contents (Full = 518,449 AF)													440,200
Actual End-of-Month Supply Reservoir Contents (AF)	425,595	421,903	415,083	407,905	438,115	474,473	472,785	466,519	451,255	445,464	439,943		
Actual % Full	82%	81%	80%	79%	85%	92%	91%	90%	87%	86%	85%		
Historical Median % Full	81%	80%	79%	79%	88%	98%	95%	92%	88%	85%	84%	83%	
2022 Expected Daily Use (MG)	105	104	102	120	157	257	298	292	270	158	105	101	177
Actual Daily Use (MG)	1	92	98	102	102	192	182	318	344	309	194	126	116
	2	100	95	101	102	169	186	304	312	324	199	126	116
	3	100	100	101	99	166	223	291	340	272	221	117	112
	4	105	105	100	109	165	229	338	319	286	195	114	111
	5	99	97	95	118	171	237	308	348	336	212	114	117
	6	101	103	100	108	214	263	321	300	306	207	114	111
	7	100	100	102	107	222	250	294	261	342	207	120	113
	8	101	100	101	108	217	286	347	287	310	193	120	115
	9	101	102	103	112	236	262	337	297	302	207	118	112
D	10	99	98	88	103	241	298	320	341	239	224	119	111
A	11	100	97	100	115	275	276	348	321	240	212	114	114
Y	12	98	96	105	102	253	275	326	345	288	221	124	
	13	101	99	98	103	285	323	363	309	276	202	107	
O	14	93	105	102	112	268	281	333	298	283	212	116	
F	15	96	108	99	116	269	319	355	299	242	195	111	
	16	96	105	97	116	297	301	317	228	272	186	117	
M	17	103	106	96	118	273	327	326	238	266	201	112	
O	18	96	106	97	137	297	295	373	260	265	184	115	
N	19	100	98	96	140	257	290	326	301	305	189	115	
T	20	100	99	97	148	194	338	328	270	274	178	114	
H	21	102	102	96	152	156	297	307	265	260	178	118	
	22	95	100	94	160	153	325	360	303	218	166	115	
	23	102	102	102	151	167	308	316	281	240	156	114	
	24	102	102	98	159	167	323	262	322	239	151	106	
	25	95	99	93	160	198	265	299	293	242	143	105	
	26	101	103	101	178	228	269	293	312	281	144	107	
	27	94	104	97	194	262	336	277	292	254	132	112	
	28	103	103	102	192	239	316	235	286	268	131	115	
	29	96		96	194	224	342	279	322	246	128	111	
	30	102		92	204	245	272	286	305	248	126	111	
	31	91		101		208		294	327		126	116	
Monthly Average	99	101	98	134	223	283	315	301	274	181	115	113	191
% of 2022 Expected Daily Use	94%	97%	97%	112%	142%	110%	106%	103%	102%	115%	109%	112%	108%

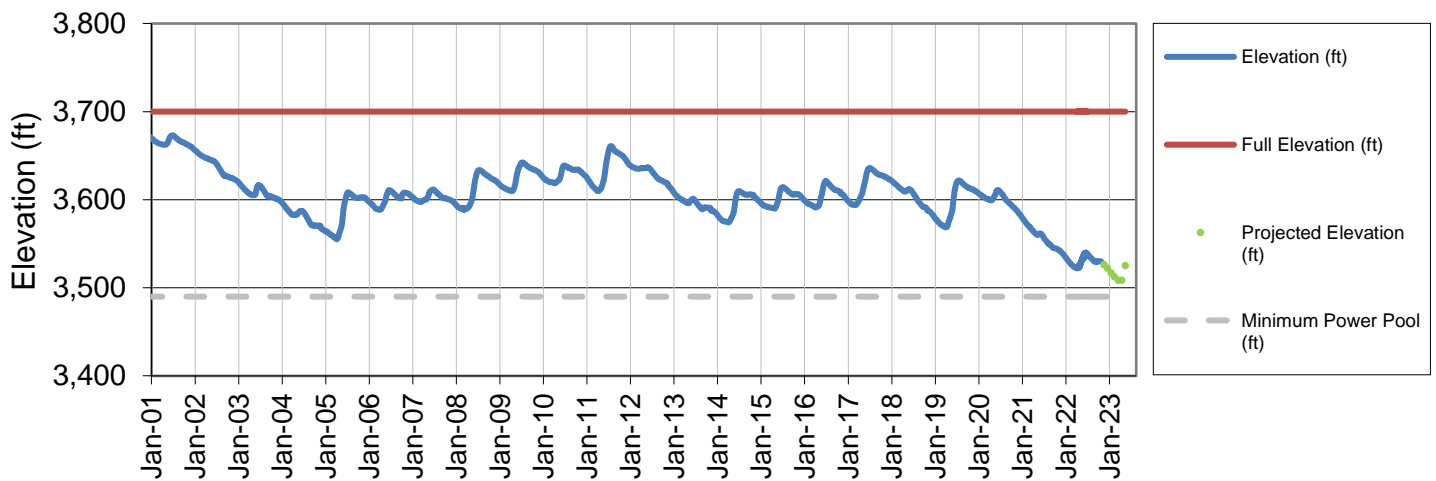
Notes: 1) "AF" denotes acre-feet. "MG" denotes million gallons. 2) Expected Daily Use is based on historical use with normal weather conditions. 3) The predicted end-of-month supply reservoir contents figures assume normal weather after December 5th, 2022. 4) The differences between predicted and actual end-of-month supply reservoir contents are the result of normal estimation error of daily use, supply, evaporation, carriage losses and raw water deliveries. 5) Predicted supply reservoir contents last updated on December 5th, 2022. 6) Daily water figures are subject to change.

Lake Powell Report*

Colorado River Above Lake Powell Snowpack



Lake Powell Elevation (2001-Current)



* Denver Water gets half of its water supply from the Colorado River and closely monitors conditions at Lake Powell and within the greater Colorado River Basin.