



WATER WATCH REPORT

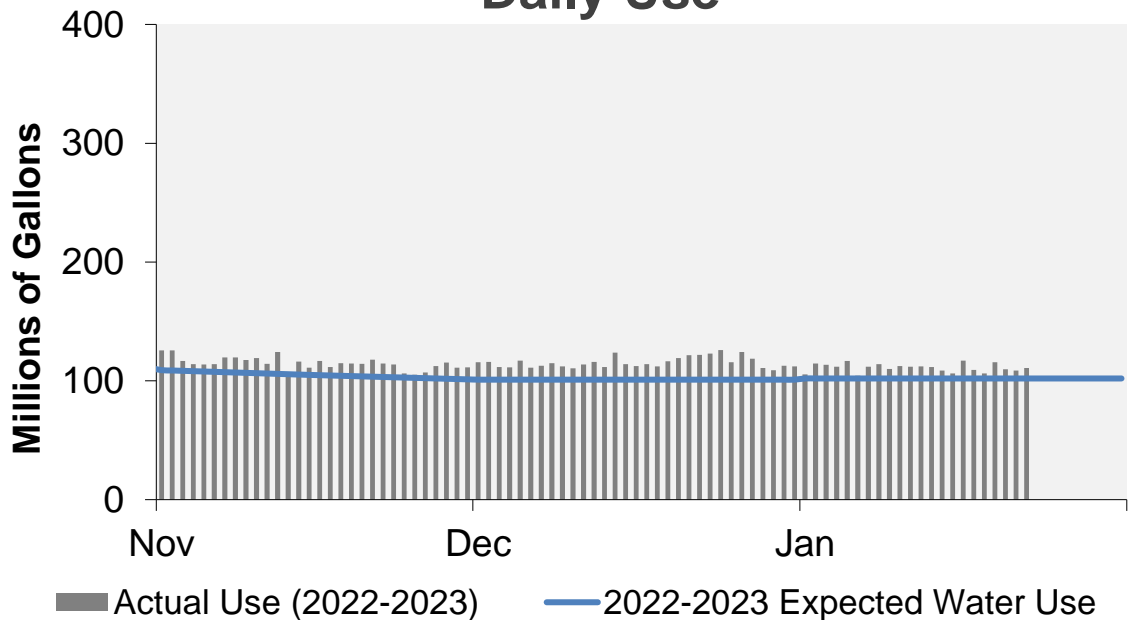
January 23, 2023

Supply Reservoir Contents

Reservoir	Capacity		Current Usable Contents (acre-feet)	Percent Full		
	(acre-feet)			Current	Last Year	Historical Median
	Total	Usable				
Antero	20,122	20,067	19,825	99%	99%	99%
Eleven Mile	97,779	97,779	99,418	102%	101%	102%
Cheesman	79,064	79,064	69,888	88%	84%	83%
Marston	19,108	13,133	7,134	54%	79%	54%
Strontia Springs	7,863	7,163	6,269	88%	91%	93%
Chatfield	28,709	12,415	8,004	64%	73%	85%
Dillon	257,304	249,095	203,673	82%	77%	91%
Gross*	41,811	29,811	10,835	36%	73%	51%
Ralston	10,776	7,276	3,620	50%	0%	63%
Meadow Creek	5,370	4,520	147	3%	67%	14%
Total	567,906	520,323	428,812	82%	82%	81%

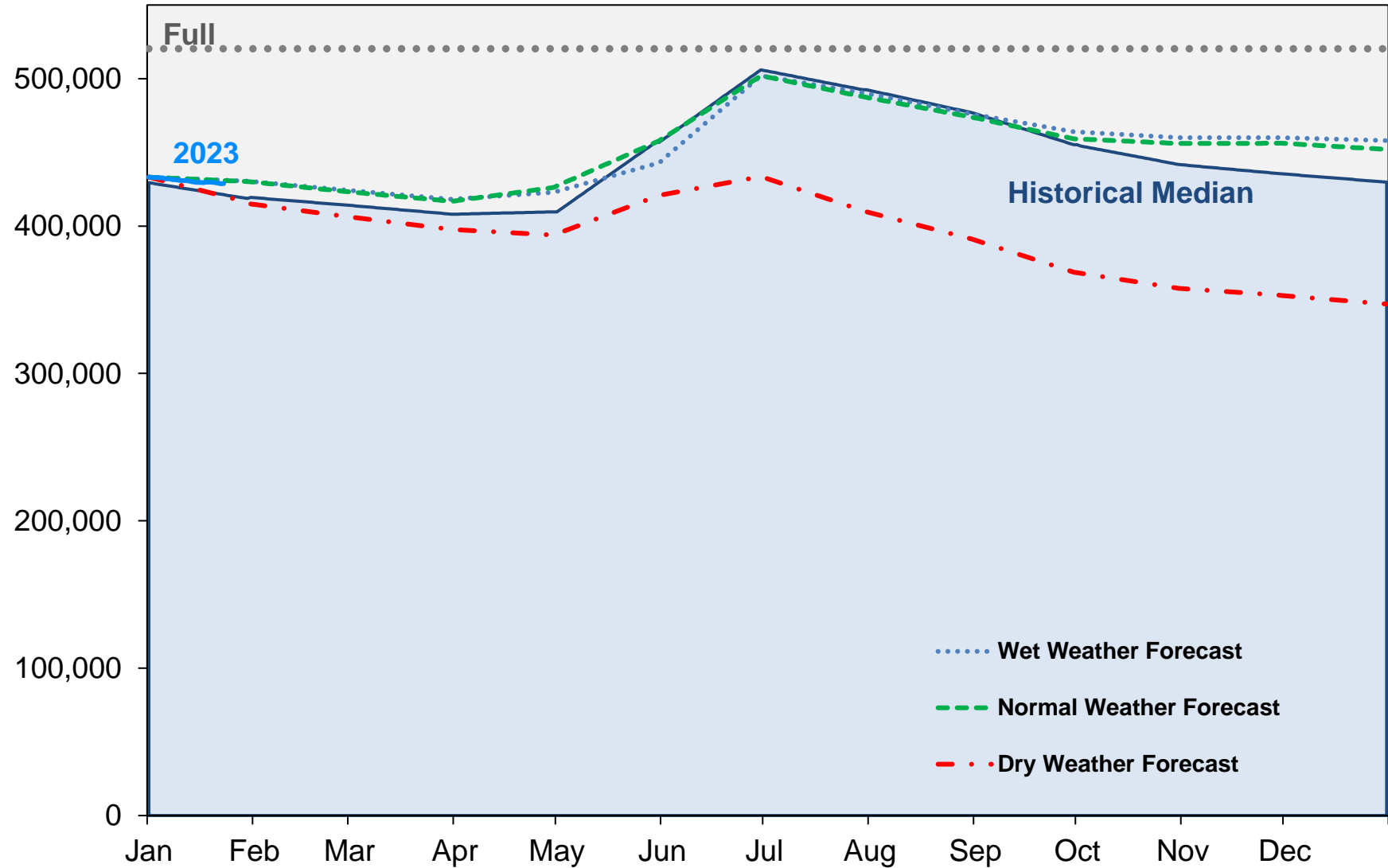
*Gross Reservoir storage is limited to 29,938 acre feet in total storage during construction activities. The percent full figures are based on the normal usable capacity of 29,811 acre feet.

Daily Use



Supply Reservoir Contents

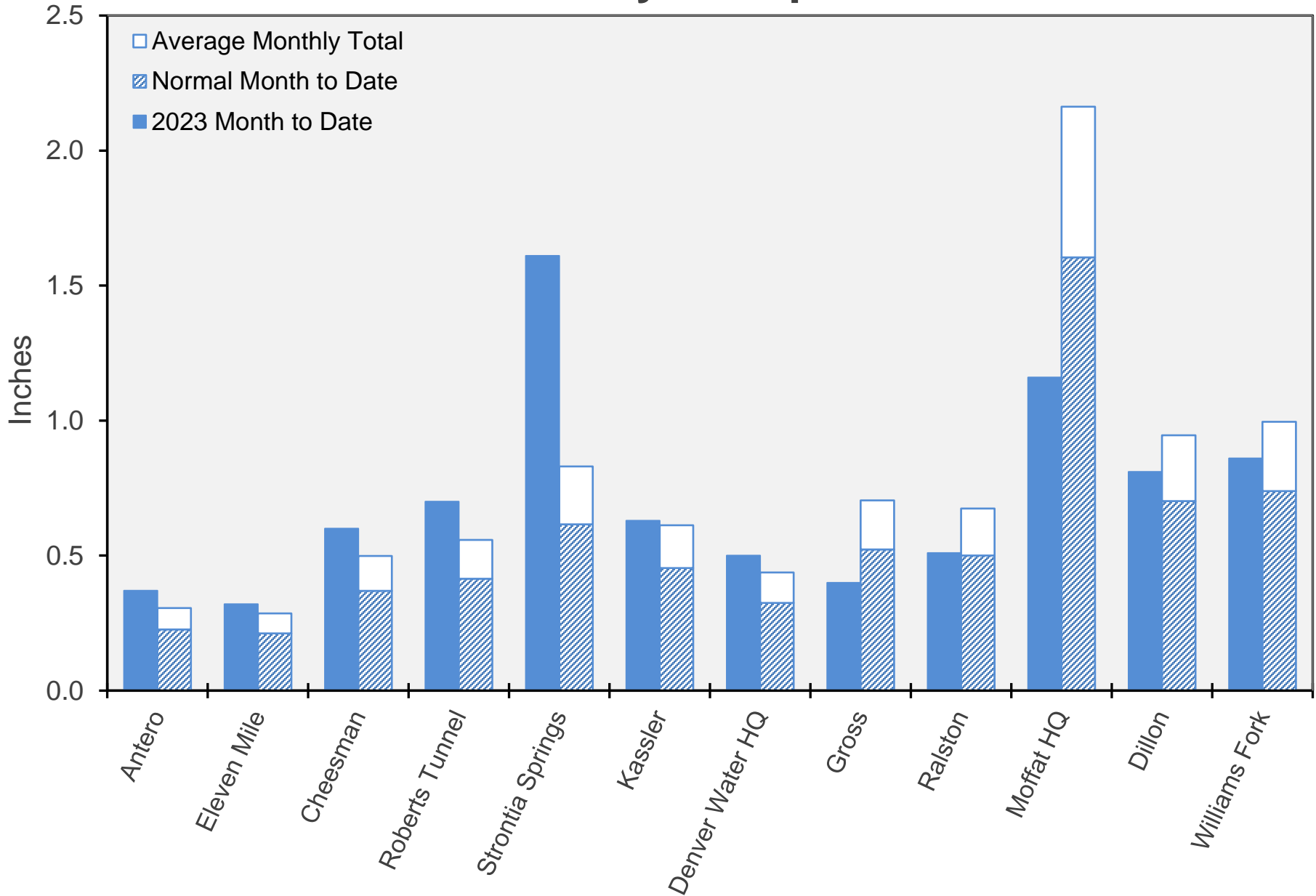
Acre-Feet



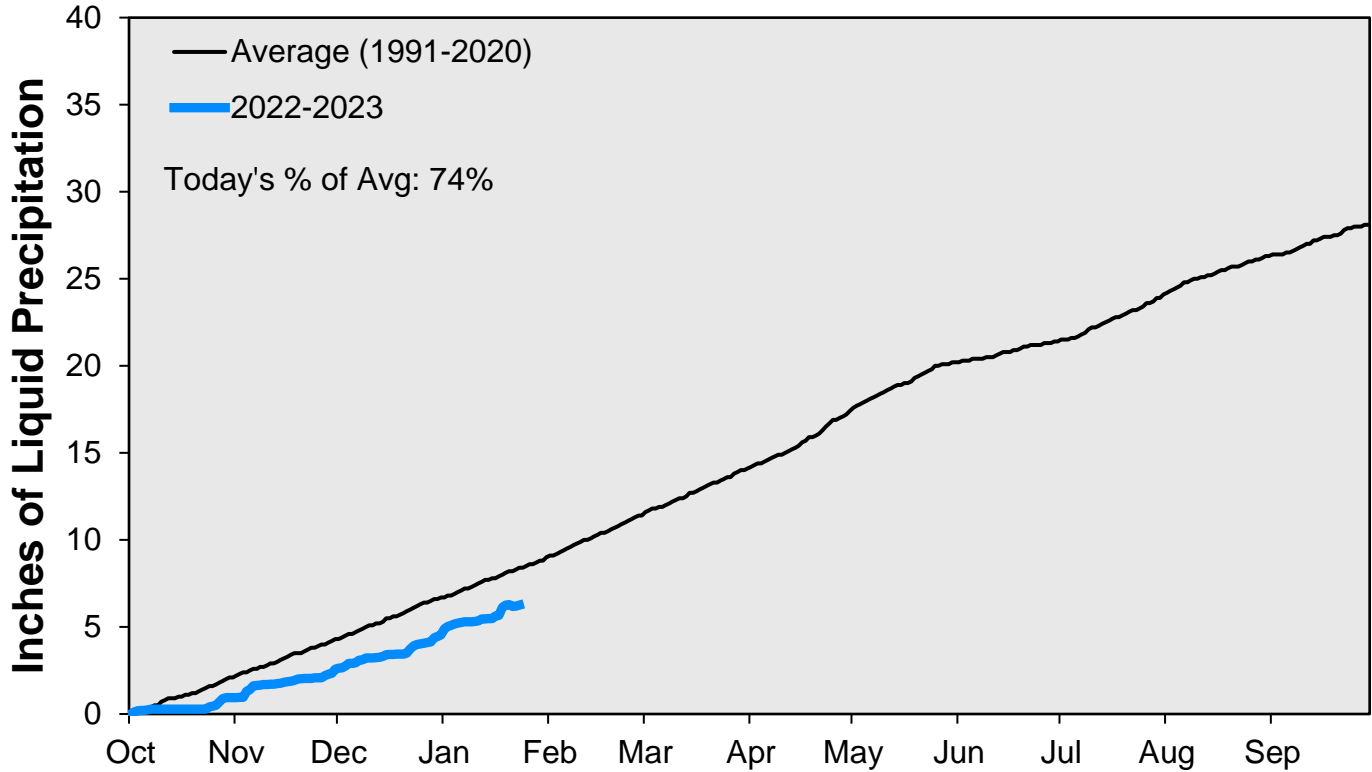
Note: Denver Water forecasts seasonal reservoir storage contents under dry future weather, normal future weather and wet future weather scenarios.

Gross Reservoir storage is limited to 29,938 acre feet in total storage during construction activities. The percent full figures are based on the normal usable capacity of 29,811 acre feet.

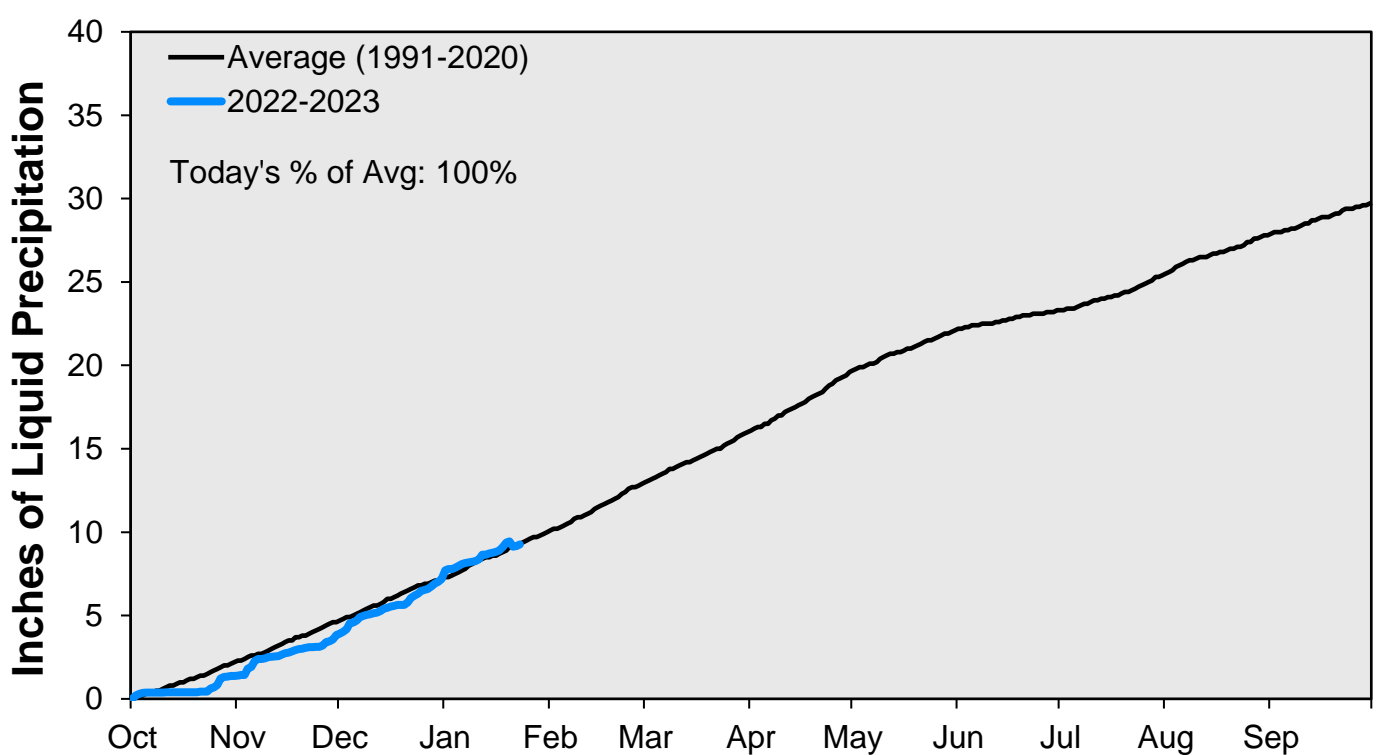
January Precipitation



CUMULATIVE PRECIPITATION: SOUTH PLATTE RIVER

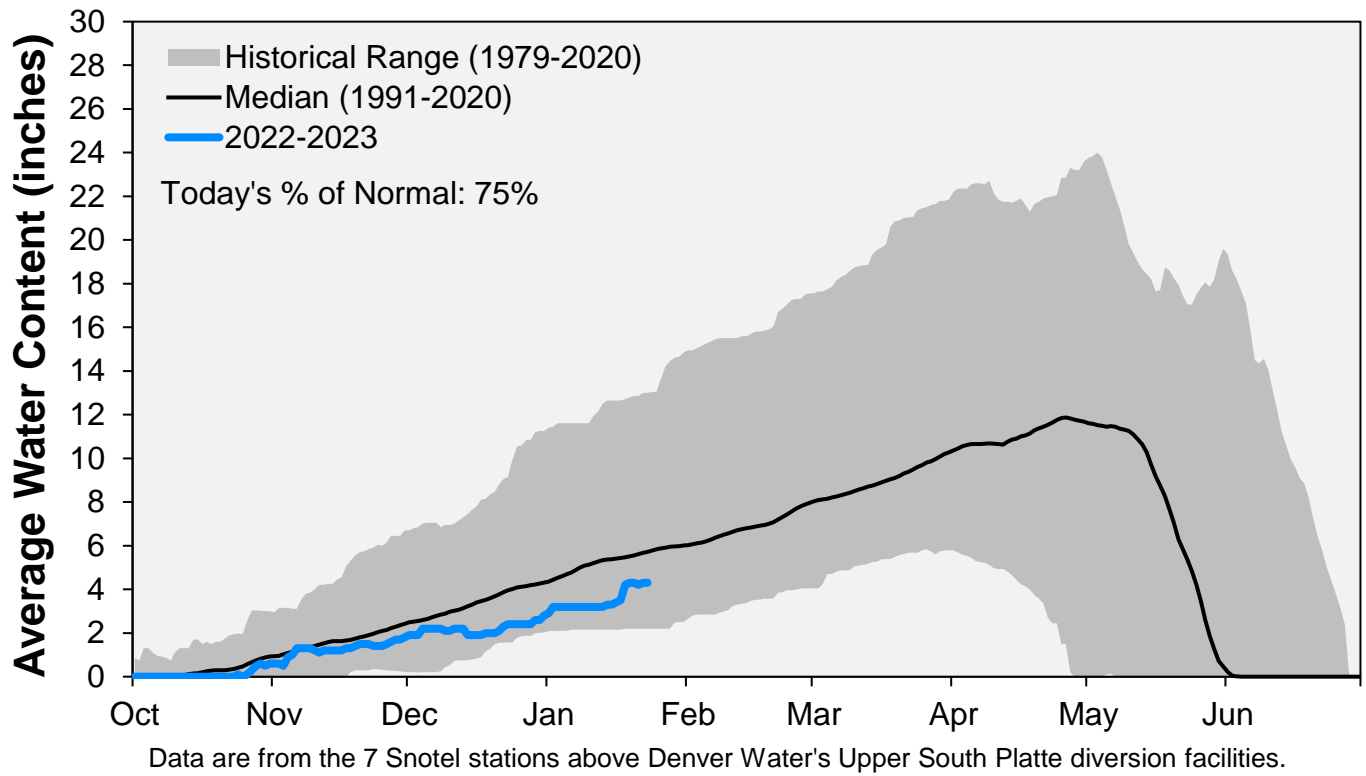


CUMULATIVE PRECIPITATION: COLORADO RIVER WATERSHED

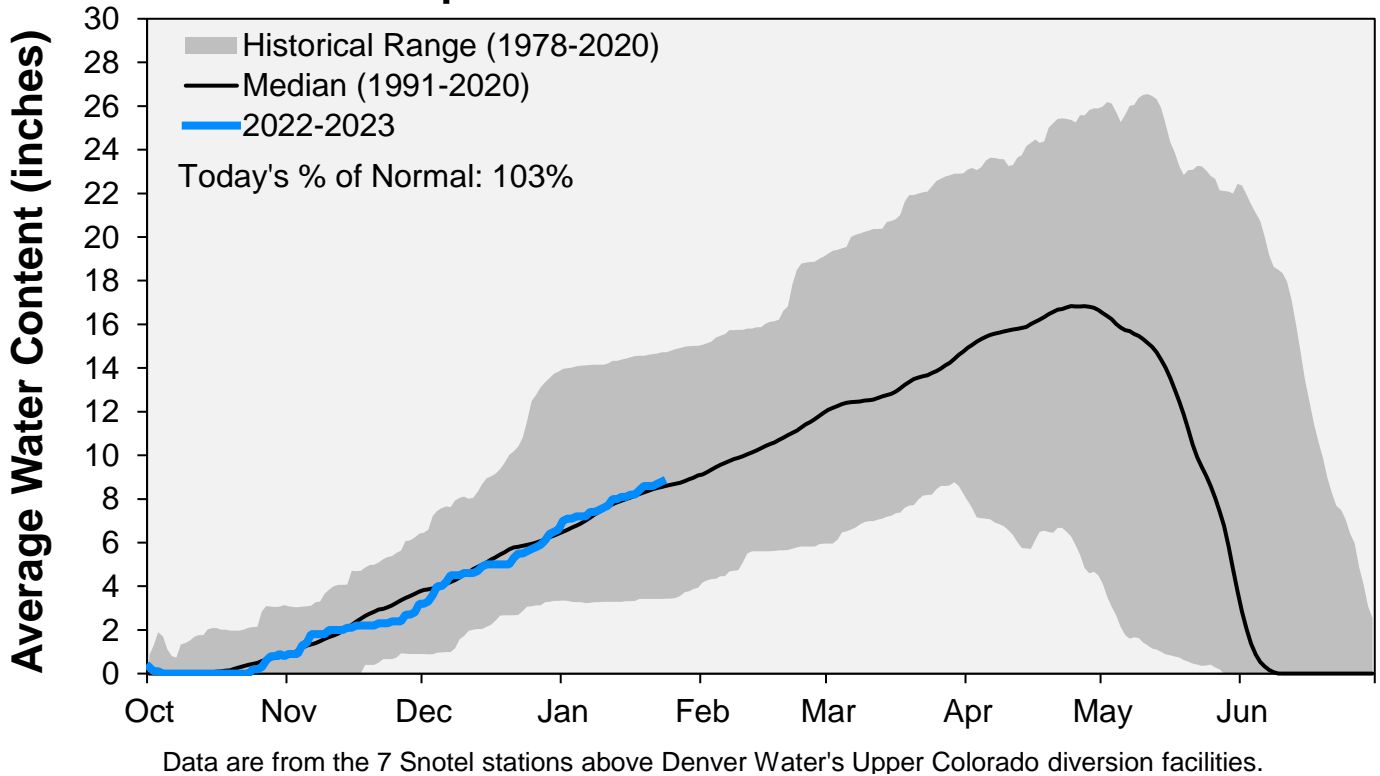


Data are from the 7 SNOTEL stations above Denver Water's Upper Colorado diversion facilities.

Snowpack: South Platte River Watershed



Snowpack: Colorado River Watershed



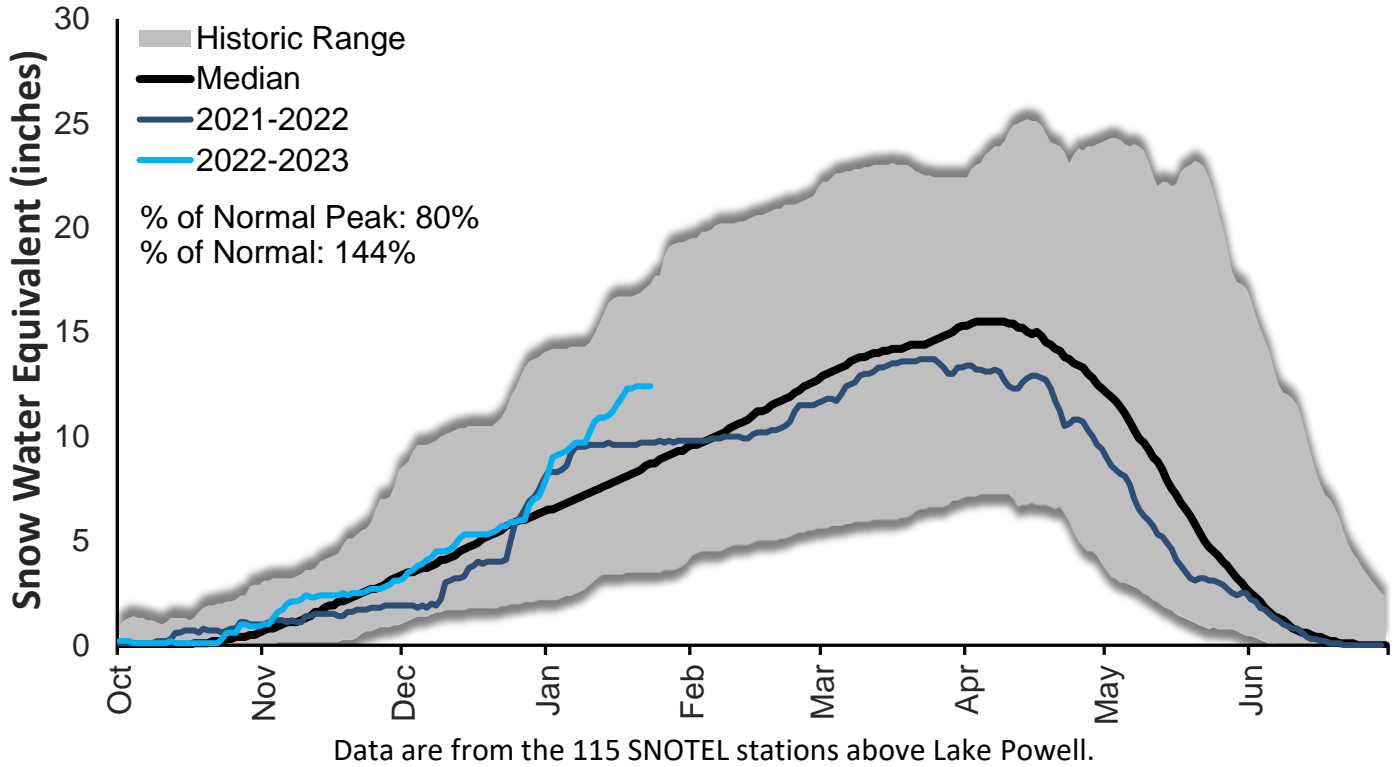
January 23, 2023

Denver Water Use and Reservoir Contents 2023													
	Jan	Feb	Mar	Apr	May	Jun	Jul	Aug	Sep	Oct	Nov	Dec	YTD-Avg
Predicted End-of-Month Supply Reservoir Contents (Full = 518,449 AF)	429,900												
Actual End-of-Month Supply Reservoir Contents (AF)													
Actual % Full													
Historical Median % Full	81%	80%	79%	79%	88%	98%	95%	92%	88%	85%	84%	83%	
2023 Expected Daily Use (MG)	102	102	102	125	190	275	310	297	270	172	108	102	102
Actual Daily Use (MG)	1	105											
	2	115											
	3	113											
	4	112											
	5	117											
	6	104											
	7	112											
	8	114											
	9	110											
	D 10	112											
	A 11	112											
	Y 12	112											
	13	112											
	O 14	109											
	F 15	106											
	16	117											
	M 17	109											
	O 18	106											
	N 19	116											
	T 20	110											
	H 21	109											
	22	111											
	23												
	24												
	25												
	26												
	27												
	28												
	29												
	30												
	31												
Monthly Average	111												111
% of 2023 Expected Daily Use	109%												109%

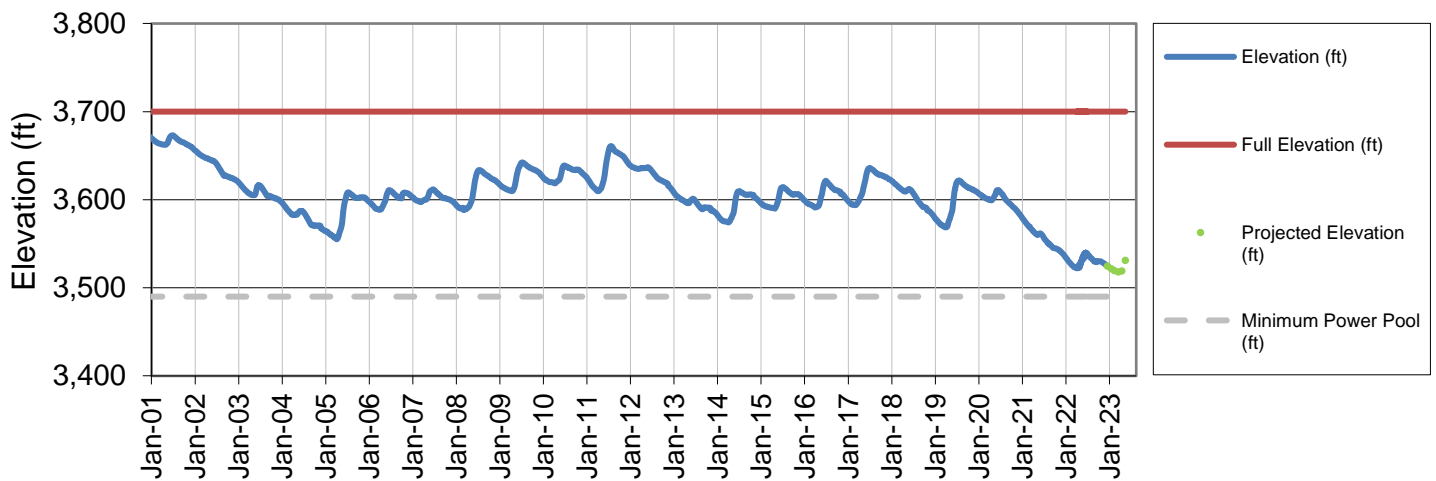
Notes: 1) "AF" denotes acre-feet. "MG" denotes million gallons. 2) Expected Daily Use is based on historical use with normal weather conditions. 3) The predicted end-of-month supply reservoir contents figures assume normal weather after January 9th, 2023. 4) The differences between predicted and actual end-of-month supply reservoir contents are the result of normal estimation error of daily use, supply, evaporation, carriage losses and raw water deliveries. 5) Predicted supply reservoir contents last updated on January 9th, 2023. 6) Daily water figures are subject to change.

Lake Powell Report*

Colorado River Above Lake Powell Snowpack



Lake Powell Elevation (2001-Current)



* Denver Water gets half of its water supply from the Colorado River and closely monitors conditions at Lake Powell and within the greater Colorado River Basin.