



WATER WATCH REPORT

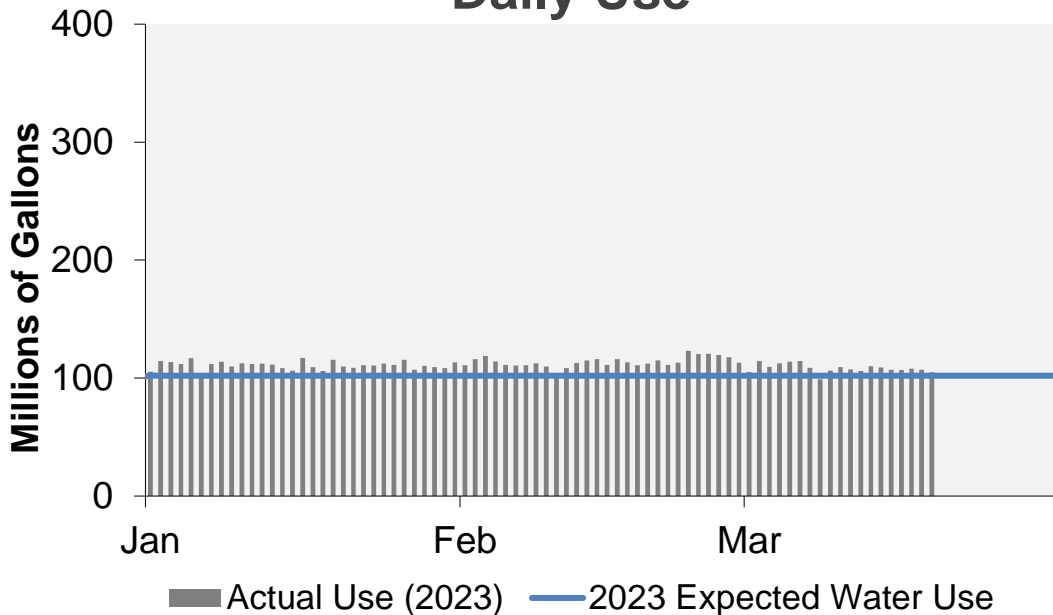
March 20, 2023

Supply Reservoir Contents

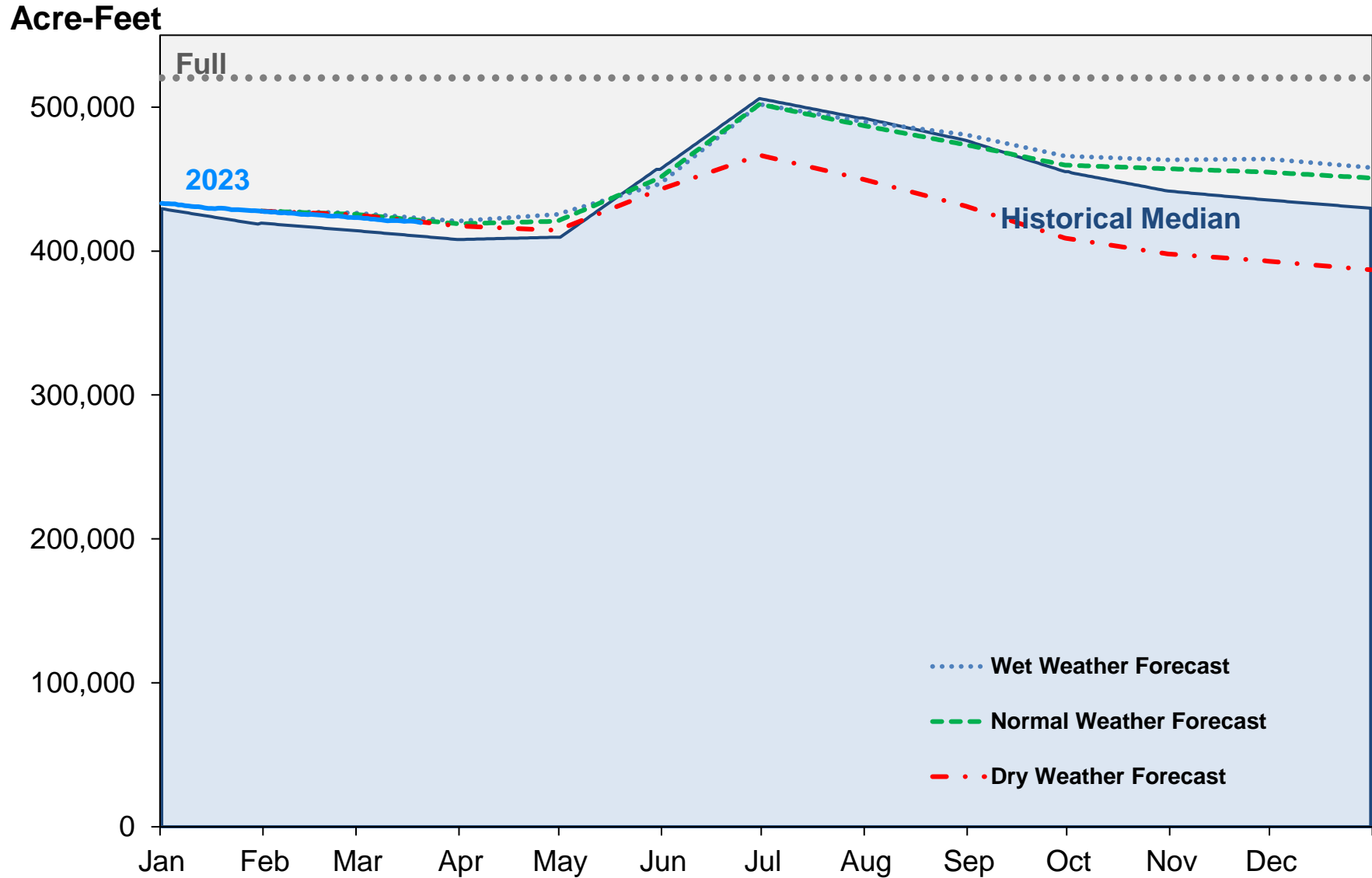
Reservoir	Capacity		Current Usable Contents (acre-feet)	Percent Full		
	(acre-feet)			Current	Last	Historical
	Total	Usable	Year		Median	
Antero	20,122	20,067	19,760	98%	99%	99%
Eleven Mile	97,779	97,779	99,795	102%	102%	102%
Cheesman	79,064	79,064	65,510	83%	74%	84%
Marston	19,108	13,133	6,963	53%	59%	57%
Strontia Springs	7,863	7,163	6,158	86%	89%	94%
Chatfield	28,709	12,415	11,189	90%	84%	96%
Dillon	257,304	249,095	199,276	80%	77%	87%
Gross*	41,811	29,811	6,908	23%	67%	36%
Ralston	10,776	7,276	4,216	58%	0%	53%
Meadow Creek	5,370	4,520	-	0%	67%	12%
Total	567,906	520,323	419,775	81%	80%	79%

*Gross Reservoir storage is limited to 29,938 acre feet in total storage during construction activities. The percent full figures are based on the normal usable capacity of 29,811 acre feet.

Daily Use



Supply Reservoir Contents

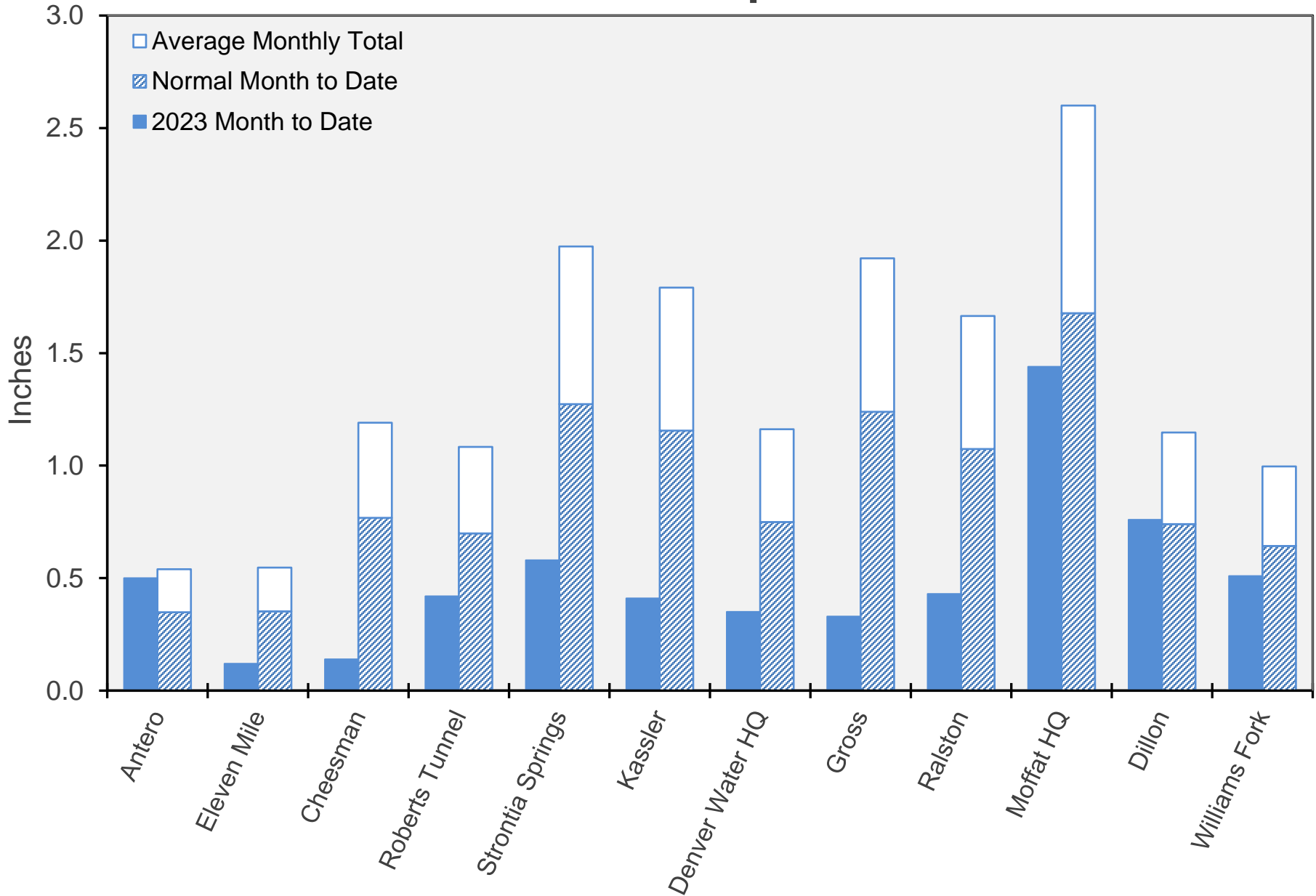


Note: Denver Water forecasts seasonal reservoir storage contents under dry future weather, normal future weather and wet future weather scenarios.

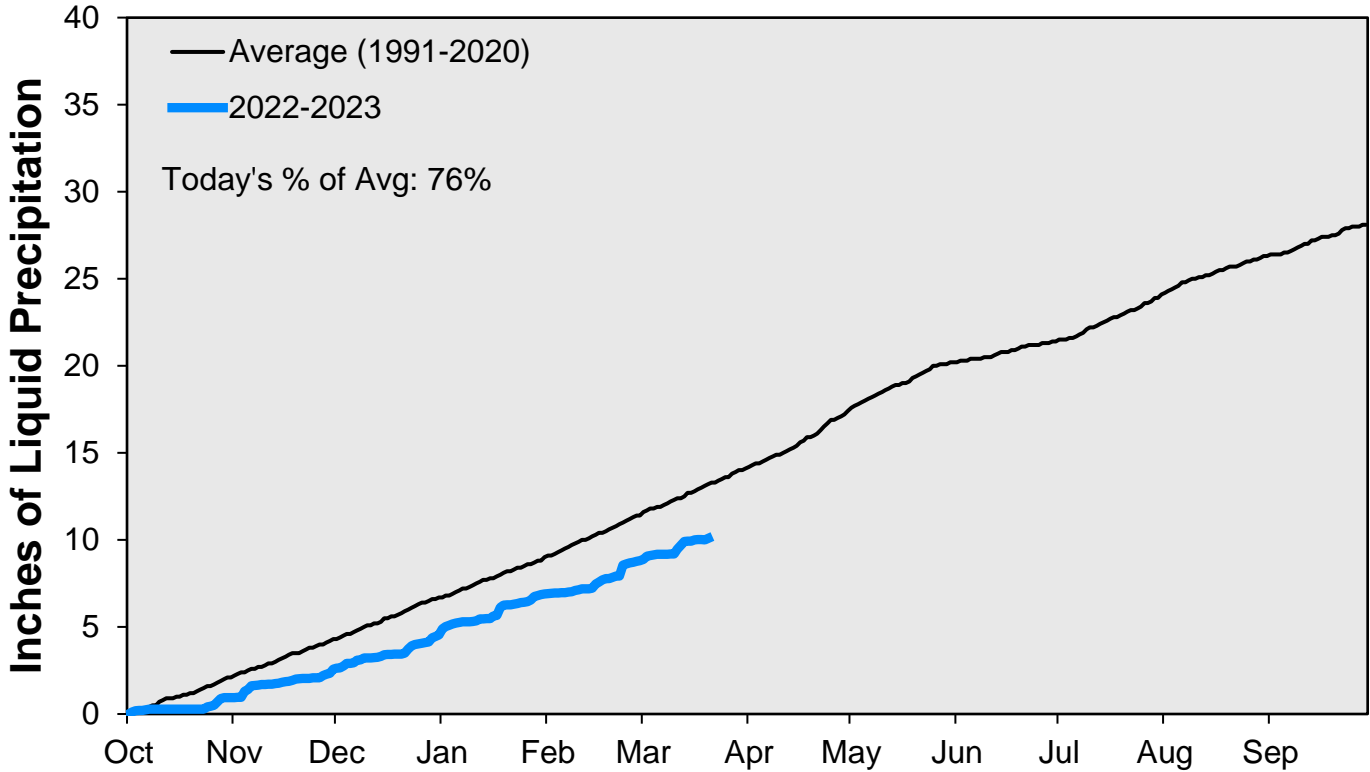
Gross Reservoir storage is limited to 29,938 acre feet in total storage during construction activities. The percent full figures are based on the normal usable capacity of 29,811 acre feet.

March 20, 2023

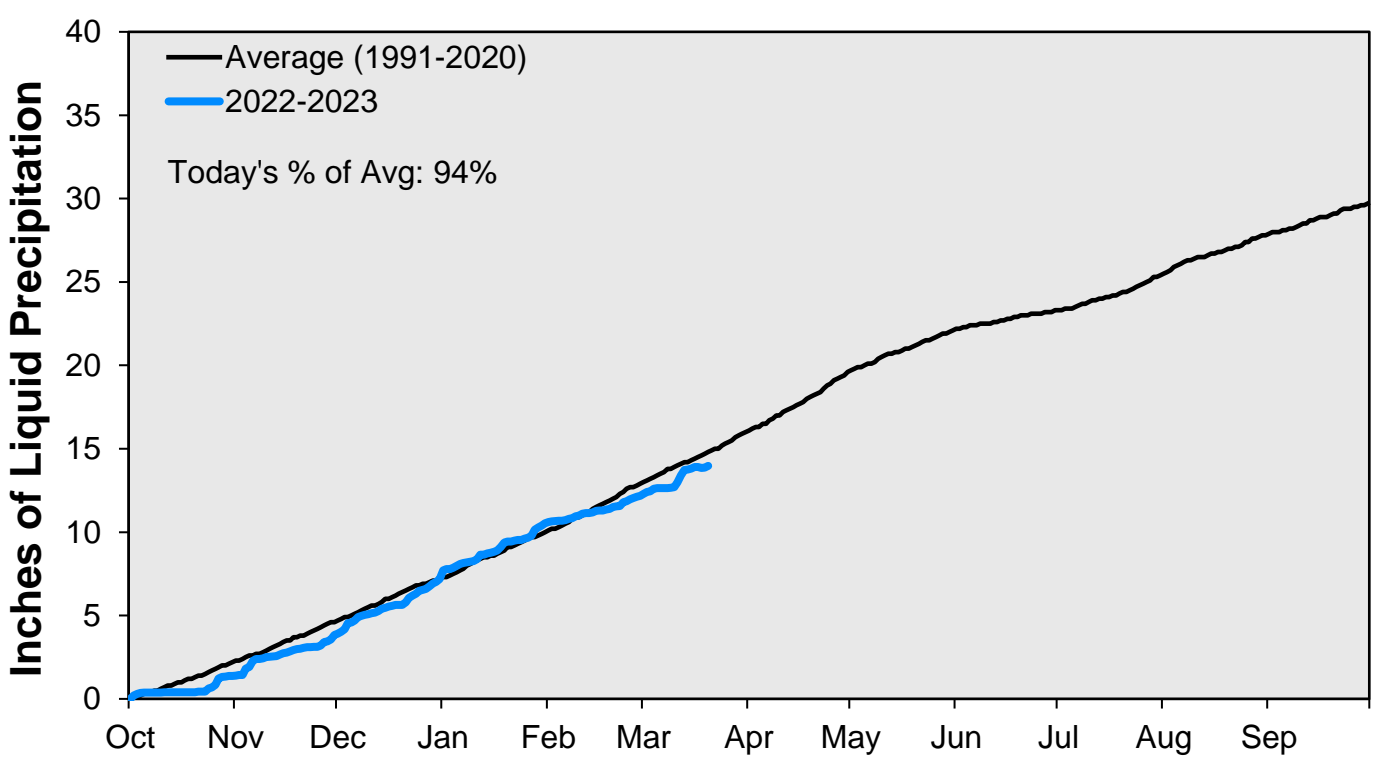
March Precipitation



CUMULATIVE PRECIPITATION: SOUTH PLATTE RIVER

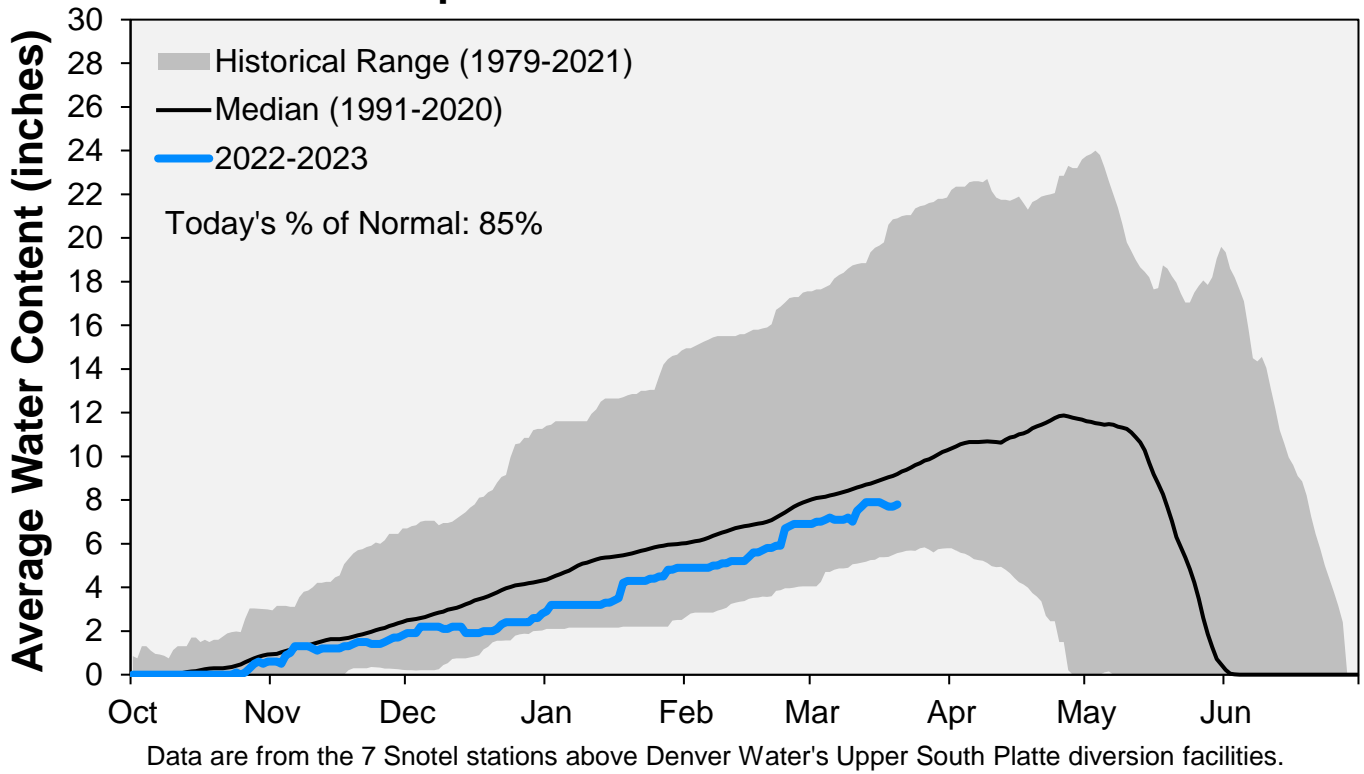


CUMULATIVE PRECIPITATION: COLORADO RIVER WATERSHED

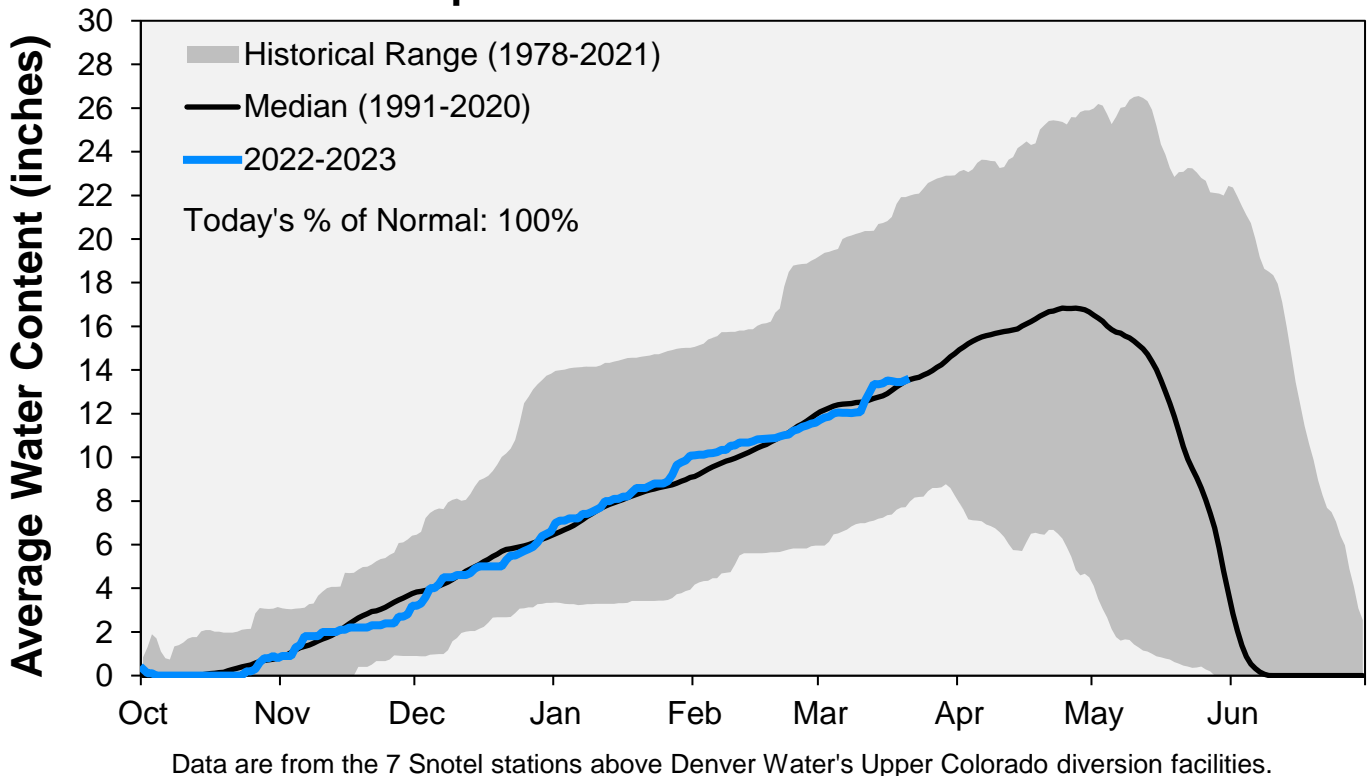


Data are from the 7 SNOTEL stations above Denver Water's Upper Colorado diversion facilities.

Snowpack: South Platte River Watershed



Snowpack: Colorado River Watershed



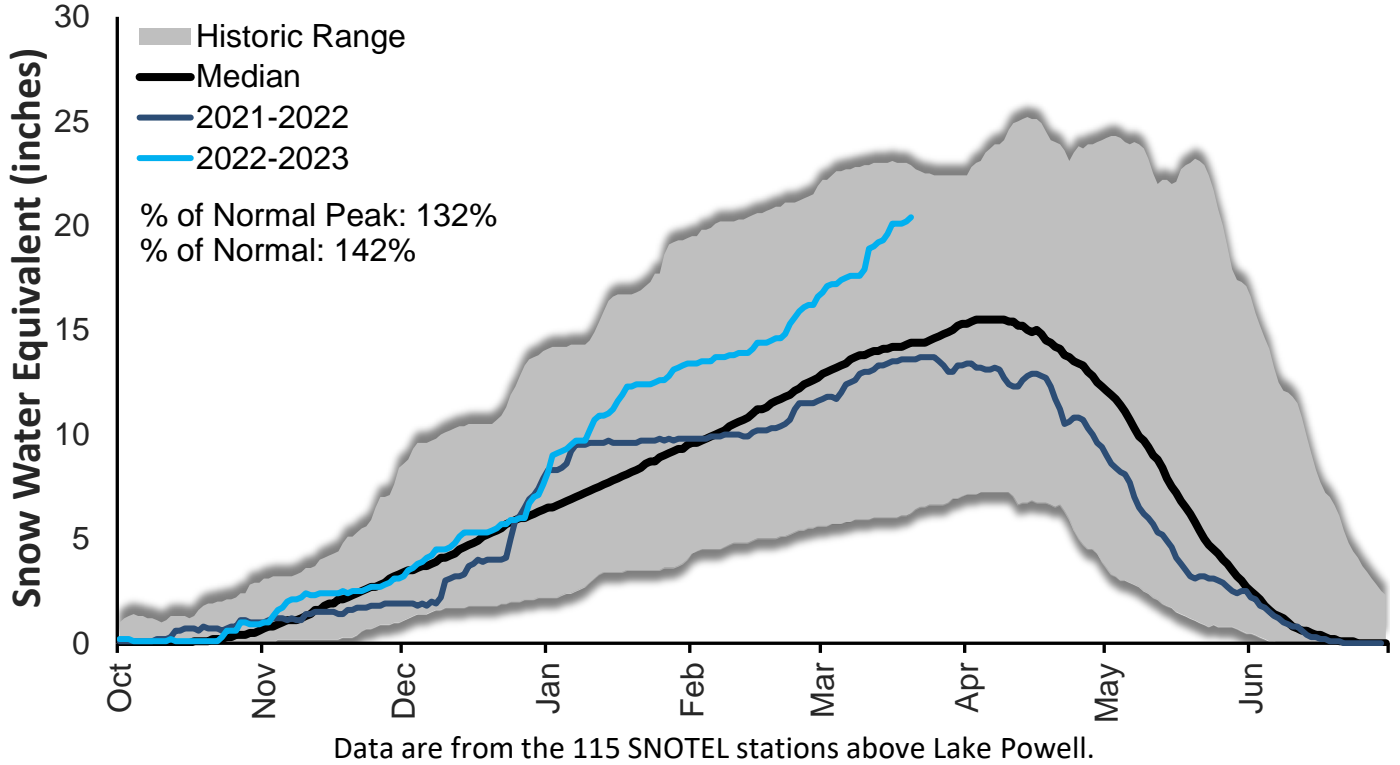
March 20, 2023

Denver Water Use and Reservoir Contents 2023													
	Jan	Feb	Mar	Apr	May	Jun	Jul	Aug	Sep	Oct	Nov	Dec	YTD-Avg
Predicted End-of-Month Supply Reservoir Contents (Full = 518,449 AF)	419,000												
Actual End-of-Month Supply Reservoir Contents (AF)	427,785	423,299											
Actual % Full	83%	82%											
Historical Median % Full	81%	80%	79%	79%	88%	98%	95%	92%	88%	85%	84%	83%	
2023 Expected Daily Use (MG)	102	102	102	125	190	275	310	297	270	172	108	102	102
Actual Daily Use (MG)	1	105	111	105									
	2	115	116	114									
	3	113	119	109									
	4	112	114	112									
	5	117	111	114									
	6	104	111	114									
	7	112	111	109									
	8	114	112	99									
	9	110	110	106									
D	10	112	103	109									
A	11	112	108	107									
Y	12	112	113	106									
	13	112	115	110									
O	14	109	116	109									
F	15	106	111	107									
	16	117	116	107									
M	17	109	113	108									
O	18	106	111	107									
N	19	116	112	105									
T	20	110	115										
H	21	109	111										
	22	111	113										
	23	111	123										
	24	112	121										
	25	111	121										
	26	115	120										
	27	107	118										
	28	110	113										
	29	109											
	30	108											
	31	113											
Monthly Average	111	114	108										111
% of 2023 Expected Daily Use	109%	112%	106%										109%

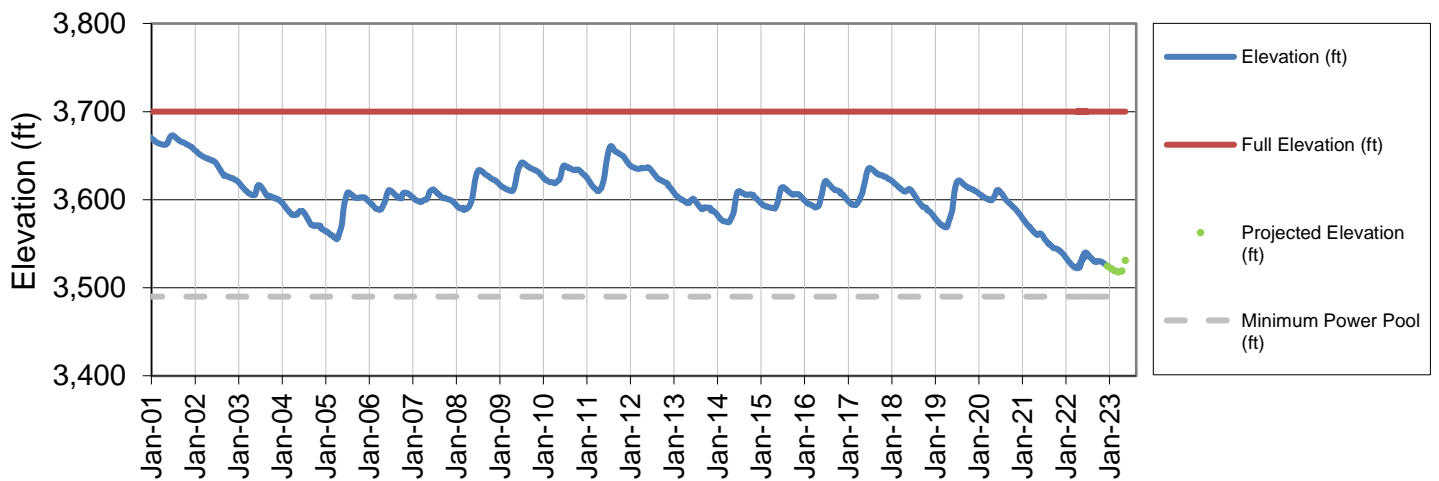
Notes: 1) "AF" denotes acre-feet. "MG" denotes million gallons. 2) Expected Daily Use is based on historical use with normal weather conditions. 3) The predicted end-of-month supply reservoir contents figures assume normal weather after March 6th, 2023. 4) The differences between predicted and actual end-of-month supply reservoir contents are the result of normal estimation error of daily use, supply, evaporation, carriage losses and raw water deliveries. 5) Predicted supply reservoir contents last updated on March 6th, 2023. 6) Daily water figures are subject to change.

Lake Powell Report*

Colorado River Above Lake Powell Snowpack



Lake Powell Elevation (2001-Current)



* Denver Water gets half of its water supply from the Colorado River and closely monitors conditions at Lake Powell and within the greater Colorado River Basin.