



# WATER WATCH REPORT

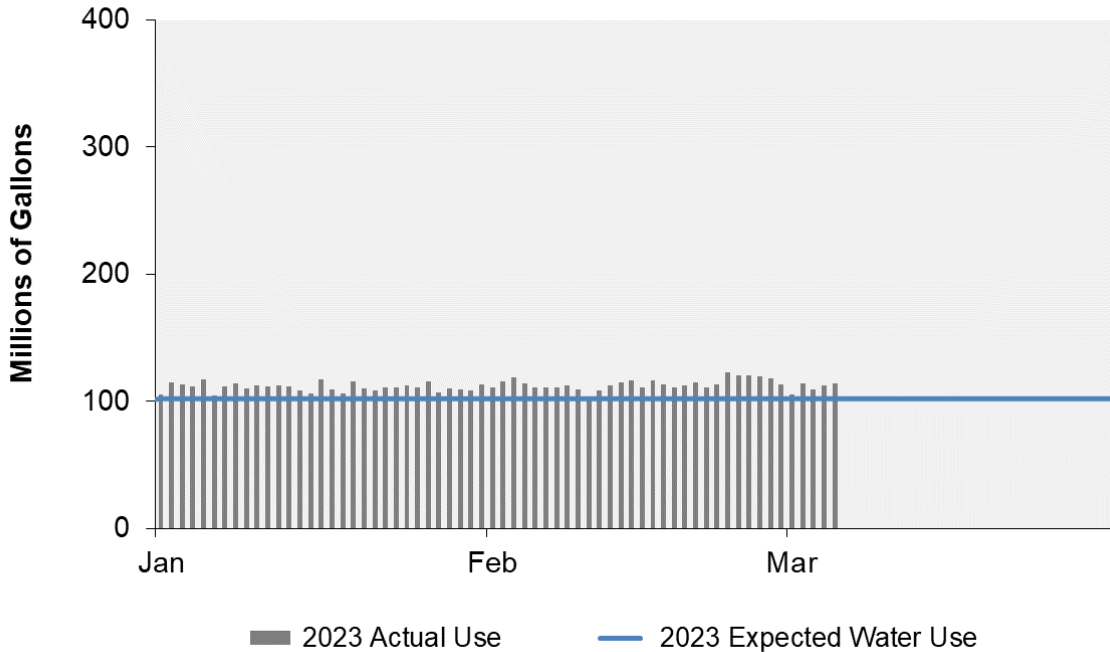
March 6, 2023

## Supply Reservoir Contents

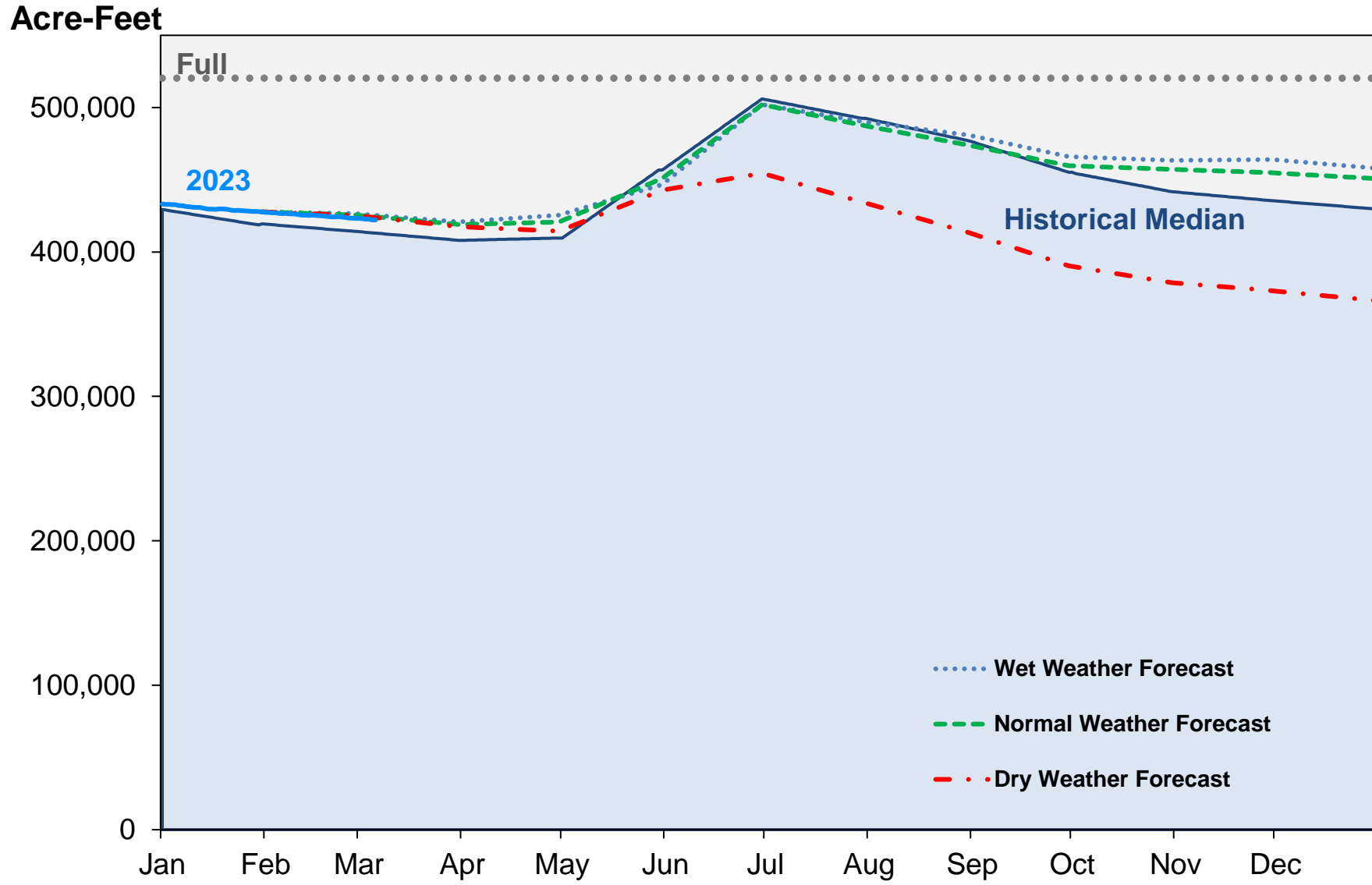
Reservoir	Capacity		Current Usable Contents (acre-feet)	Percent Full		
	(acre-feet)			Current	Last Year	Historical Median
	Total	Usable				
Antero	20,122	20,067	19,933	99%	99%	99%
Eleven Mile	97,779	97,779	99,280	102%	101%	102%
Cheesman	79,064	79,064	66,961	85%	77%	83%
Marston	19,108	13,133	7,480	57%	65%	53%
Strontia Springs	7,863	7,163	6,177	86%	87%	94%
Chatfield	28,709	12,415	10,644	86%	84%	95%
Dillon	257,304	249,095	200,402	80%	77%	88%
Gross*	41,811	29,811	6,704	22%	72%	39%
Ralston	10,776	7,276	4,595	63%	0%	52%
Meadow Creek	5,370	4,520	-	0%	67%	12%
<b>Total</b>	<b>567,906</b>	<b>520,323</b>	<b>422,177</b>	<b>81%</b>	<b>81%</b>	<b>80%</b>

\*Gross Reservoir storage is limited to 29,938 acre feet in total storage during construction activities. The percent full figures are based on the normal usable capacity of 29,811 acre feet.

## Daily Use



# Supply Reservoir Contents

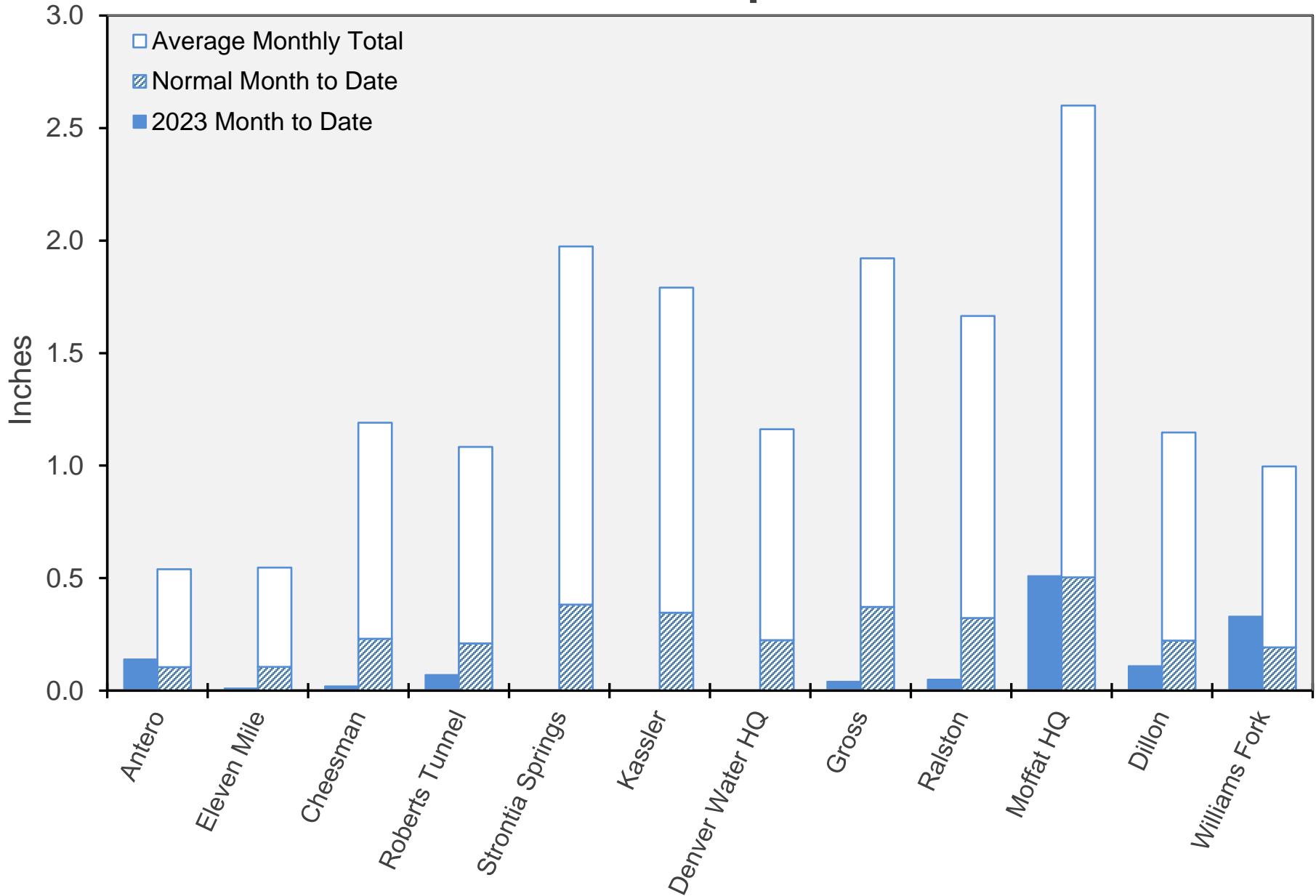


Note: Denver Water forecasts seasonal reservoir storage contents under dry future weather, normal future weather and wet future weather scenarios.

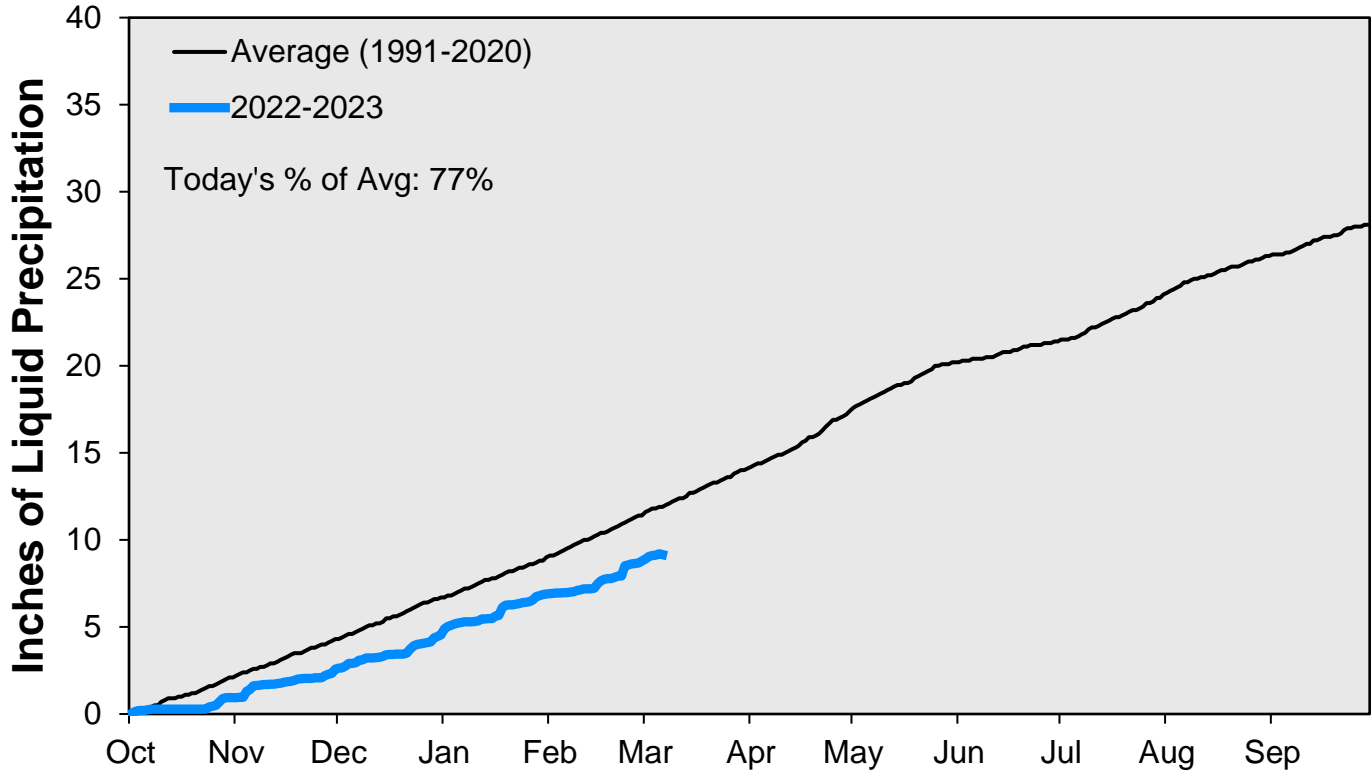
Gross Reservoir storage is limited to 29,938 acre feet in total storage during construction activities. The percent full figures are based on the normal usable capacity of 29,811 acre feet.

March 6, 2023

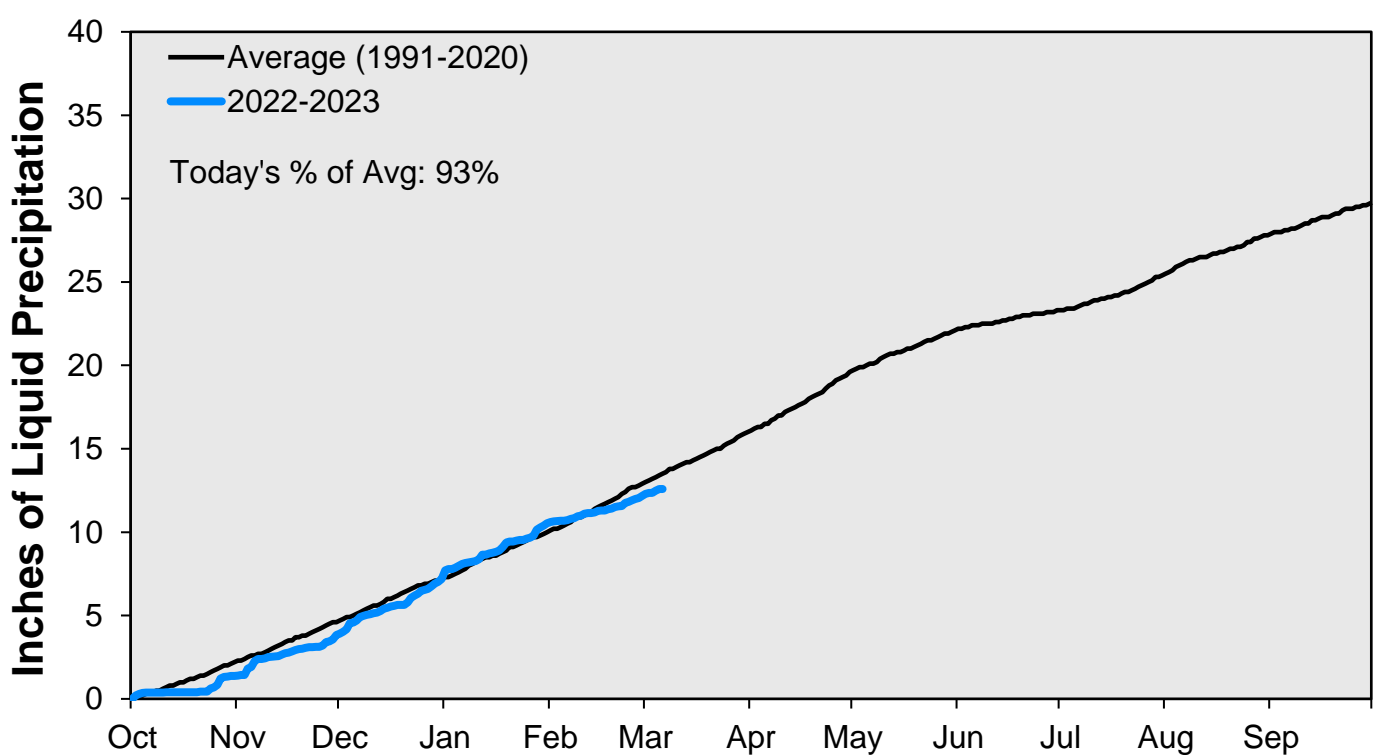
# March Precipitation



### CUMULATIVE PRECIPITATION: SOUTH PLATTE RIVER

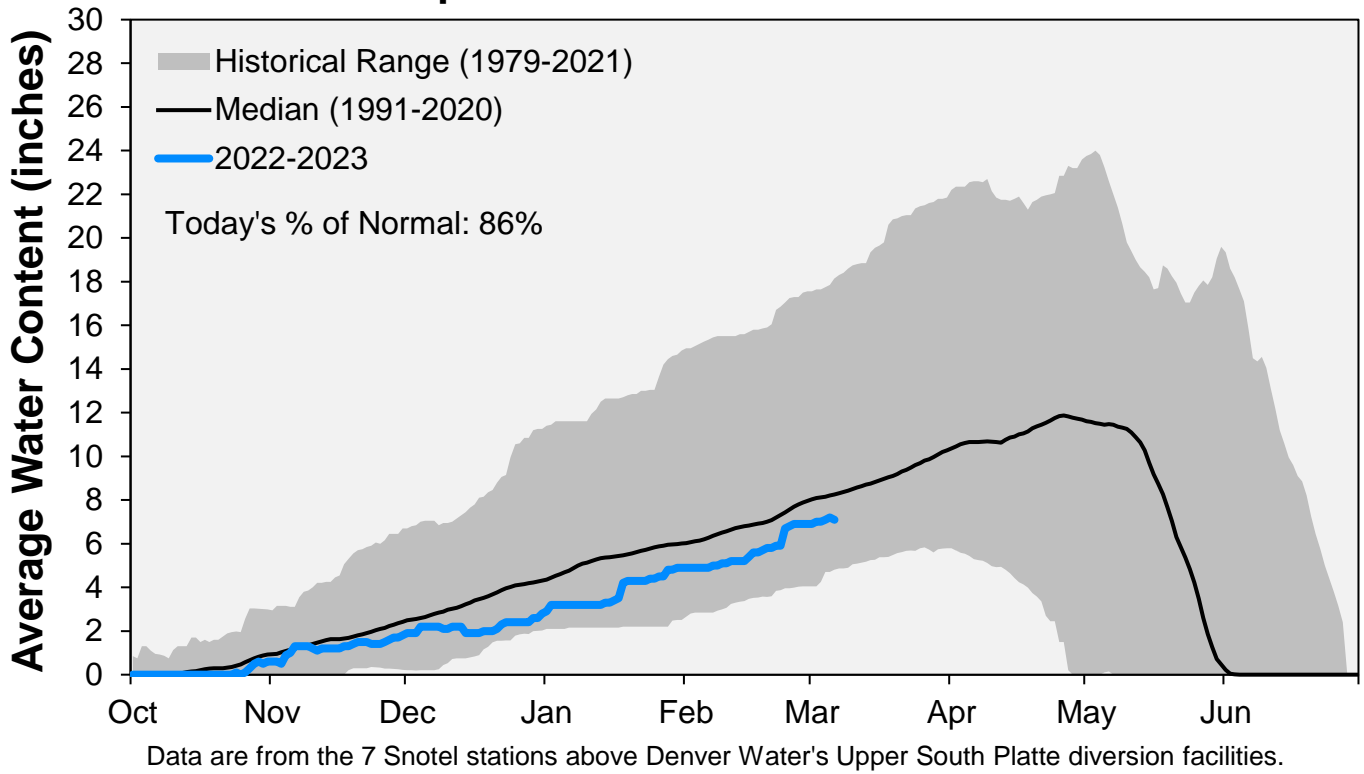


### CUMULATIVE PRECIPITATION: COLORADO RIVER WATERSHED

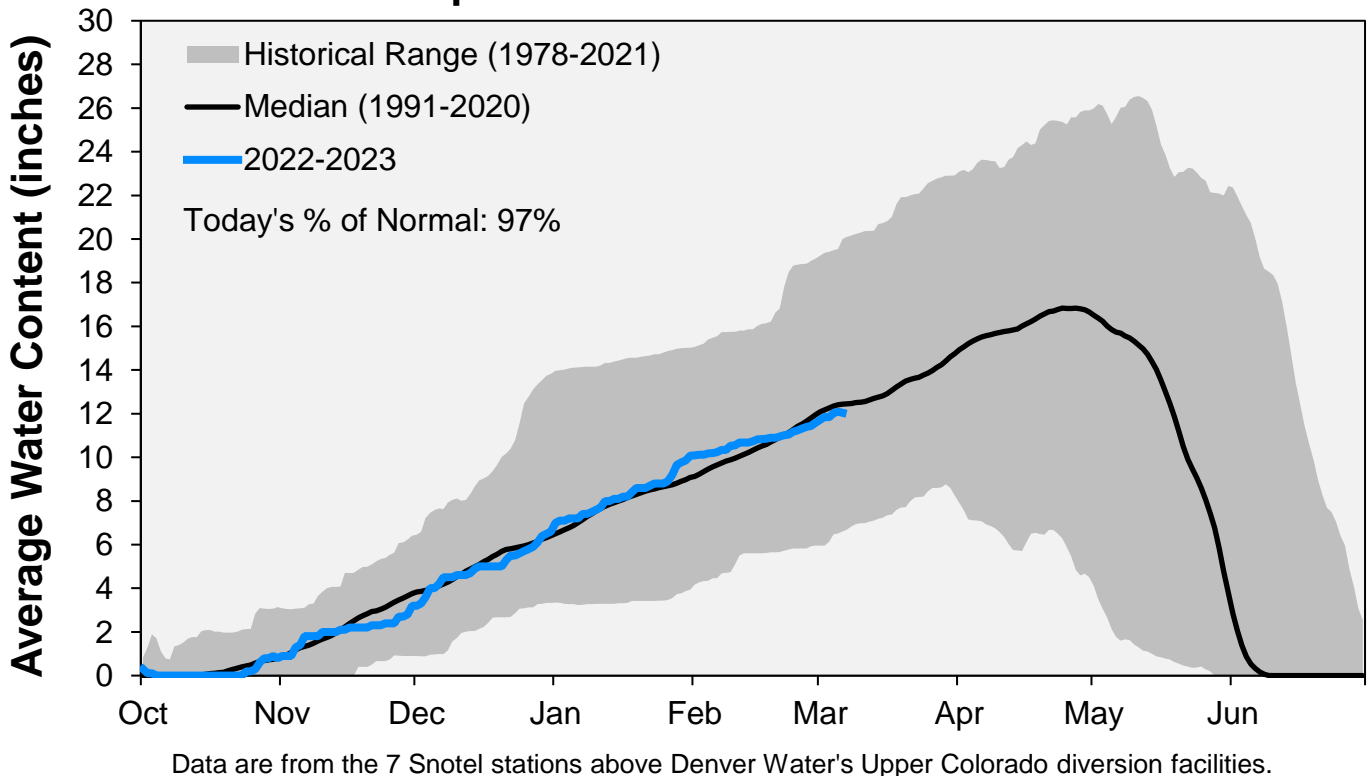


Data are from the 7 SNOTEL stations above Denver Water's Upper Colorado diversion facilities.

### Snowpack: South Platte River Watershed



### Snowpack: Colorado River Watershed



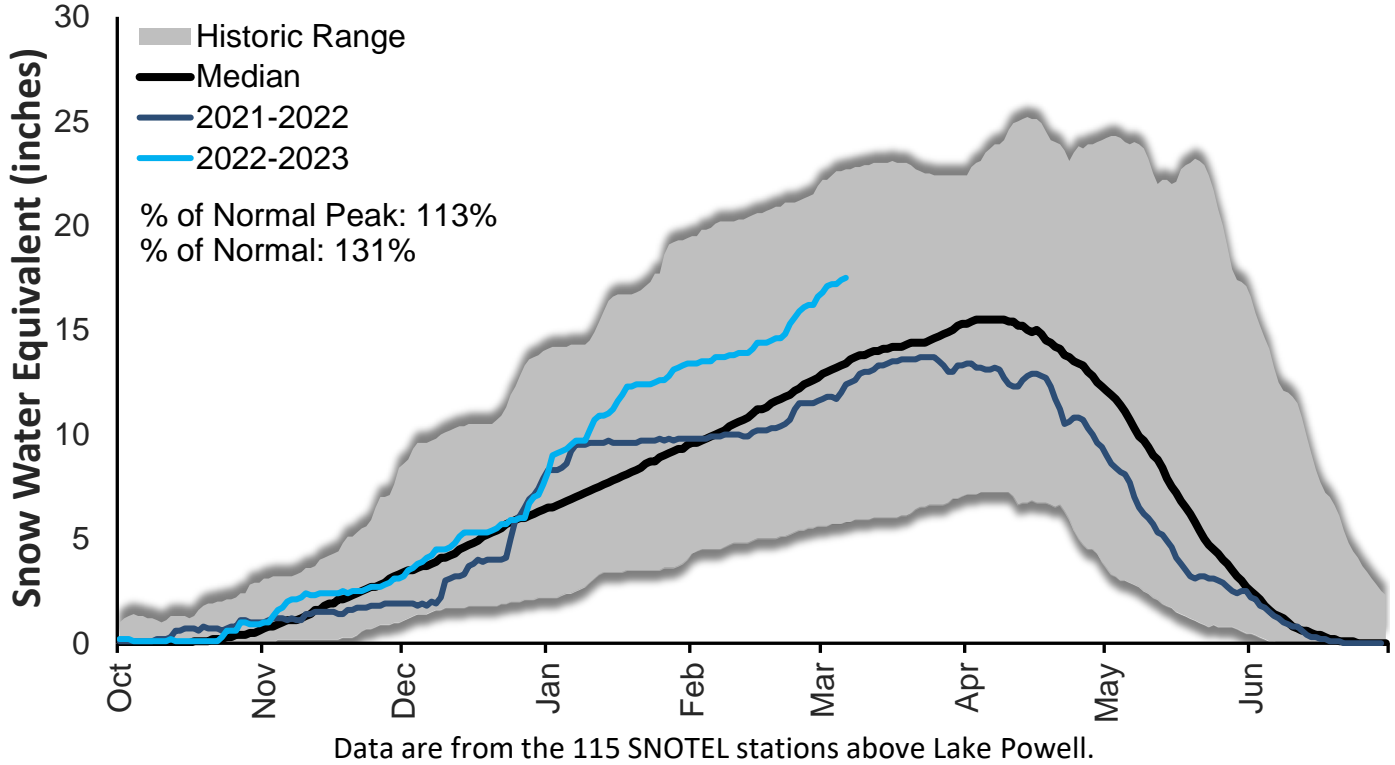
March 6, 2023

Denver Water Use and Reservoir Contents 2023													
	Jan	Feb	Mar	Apr	May	Jun	Jul	Aug	Sep	Oct	Nov	Dec	YTD-Avg
Predicted End-of-Month Supply Reservoir Contents (Full = 518,449 AF)	419,000												
Actual End-of-Month Supply Reservoir Contents (AF)	427,785	423,299											
Actual % Full	83%	82%											
Historical Median % Full	81%	80%	79%	79%	88%	98%	95%	92%	88%	85%	84%	83%	
2023 Expected Daily Use (MG)	102	102	102	125	190	275	310	297	270	172	108	102	102
Actual Daily Use (MG)	1	105	111	105									
	2	115	116	114									
	3	113	119	109									
	4	112	114	112									
	5	117	111	114									
	6	104	111										
	7	112	111										
	8	114	112										
	9	110	110										
D	10	112	103										
A	11	112	108										
Y	12	112	113										
	13	112	115										
O	14	109	116										
F	15	106	111										
	16	117	116										
M	17	109	113										
O	18	106	111										
N	19	116	112										
T	20	110	115										
H	21	109	111										
	22	111	113										
	23	111	123										
	24	112	121										
	25	111	121										
	26	115	120										
	27	107	118										
	28	110	113										
	29	109											
	30	108											
	31	113											
Monthly Average	111	114	111										112
% of 2023 Expected Daily Use	109%	112%	109%										110%

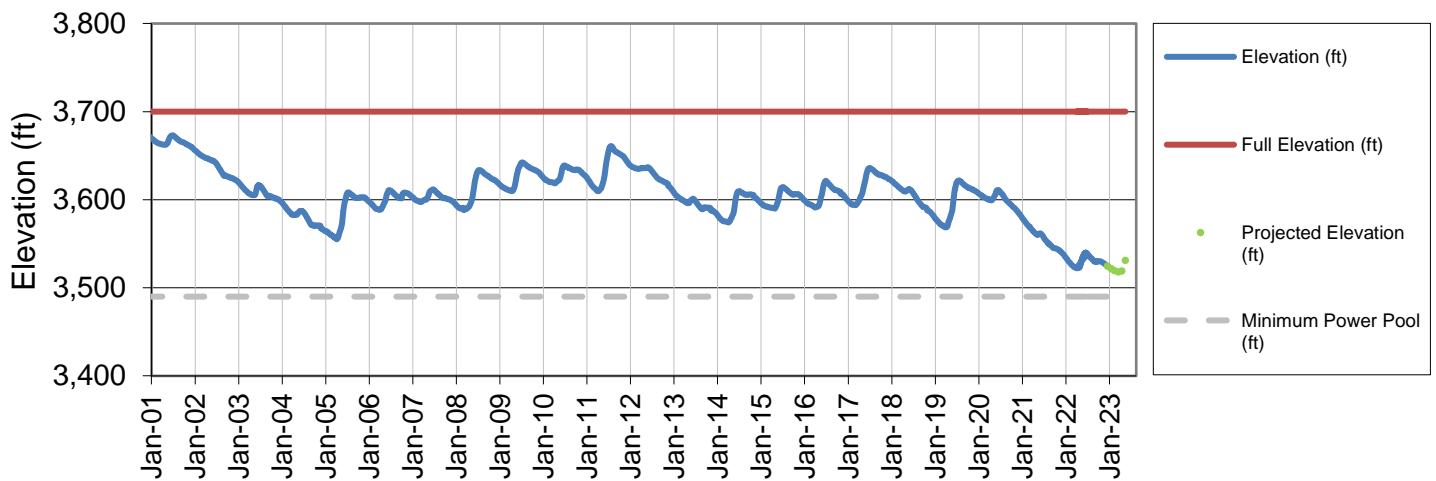
Notes: 1) "AF" denotes acre-feet. "MG" denotes million gallons. 2) Expected Daily Use is based on historical use with normal weather conditions. 3) The predicted end-of-month supply reservoir contents figures assume normal weather after March 6<sup>th</sup>, 2023. 4) The differences between predicted and actual end-of-month supply reservoir contents are the result of normal estimation error of daily use, supply, evaporation, carriage losses and raw water deliveries. 5) Predicted supply reservoir contents last updated on March 6<sup>th</sup>, 2023. 6) Daily water figures are subject to change.

# Lake Powell Report\*

## Colorado River Above Lake Powell Snowpack



## Lake Powell Elevation (2001-Current)



\* Denver Water gets half of its water supply from the Colorado River and closely monitors conditions at Lake Powell and within the greater Colorado River Basin.