



# WATER WATCH REPORT

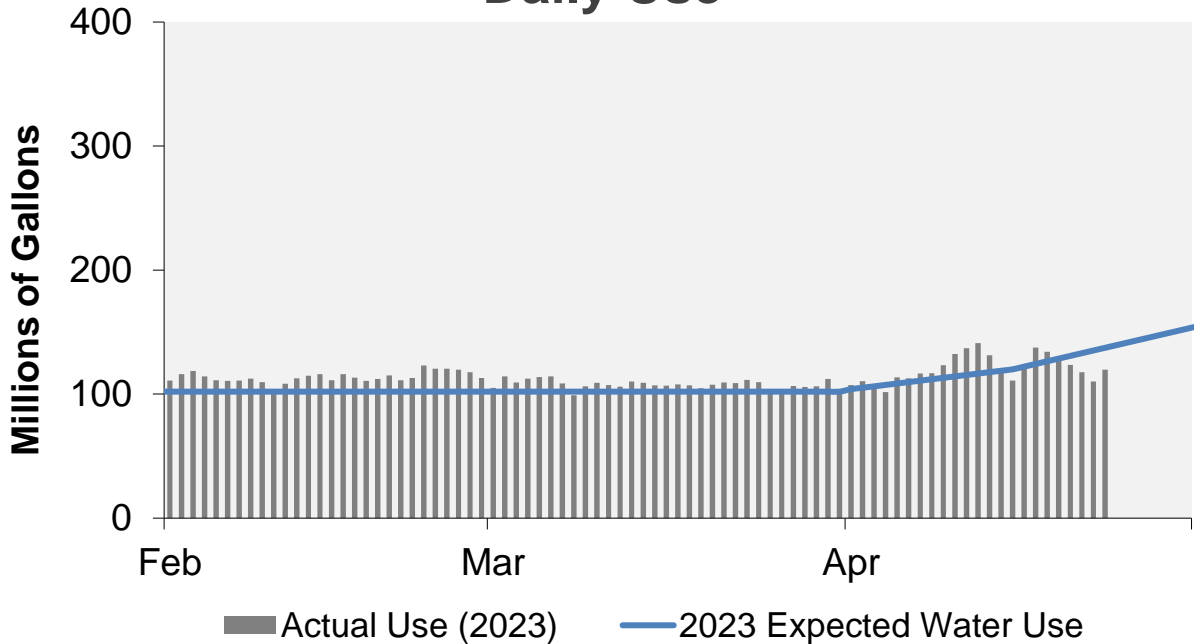
April 24, 2023

## Supply Reservoir Contents

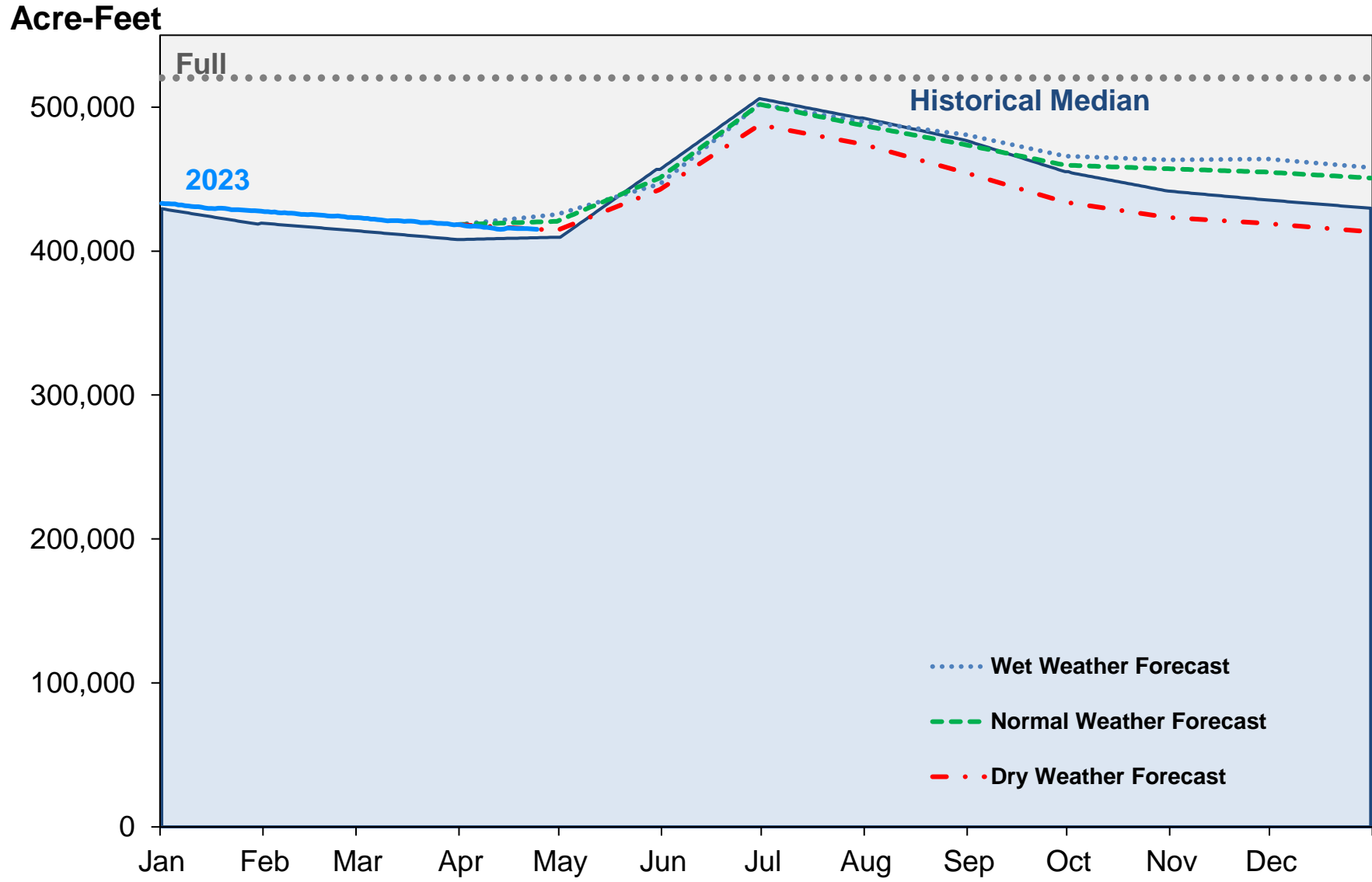
Reservoir	Capacity		Current Usable Contents (acre-feet)	Percent Full		
	(acre-feet)			Current	Last	Historical
	Total	Usable	Year		Median	
Antero	20,122	20,067	19,846	99%	97%	99%
Eleven Mile	97,779	97,779	99,452	102%	102%	102%
Cheesman	79,064	79,064	64,966	82%	72%	89%
Marston	19,108	13,133	6,975	53%	41%	69%
Strontia Springs	7,863	7,163	5,852	82%	87%	94%
Chatfield	28,709	12,415	11,479	92%	57%	94%
Dillon	257,304	249,095	195,902	79%	77%	85%
Gross*	41,811	29,811	5,093	17%	50%	25%
Ralston	10,776	7,276	5,623	77%	34%	65%
Meadow Creek	5,370	4,520	-	0%	67%	12%
<b>Total</b>	<b>567,906</b>	<b>520,323</b>	<b>415,188</b>	<b>80%</b>	<b>79%</b>	<b>79%</b>

\*Gross Reservoir storage is limited to 29,938 acre feet in total storage during construction activities. The percent full figures are based on the normal usable capacity of 29,811 acre feet.

## Daily Use



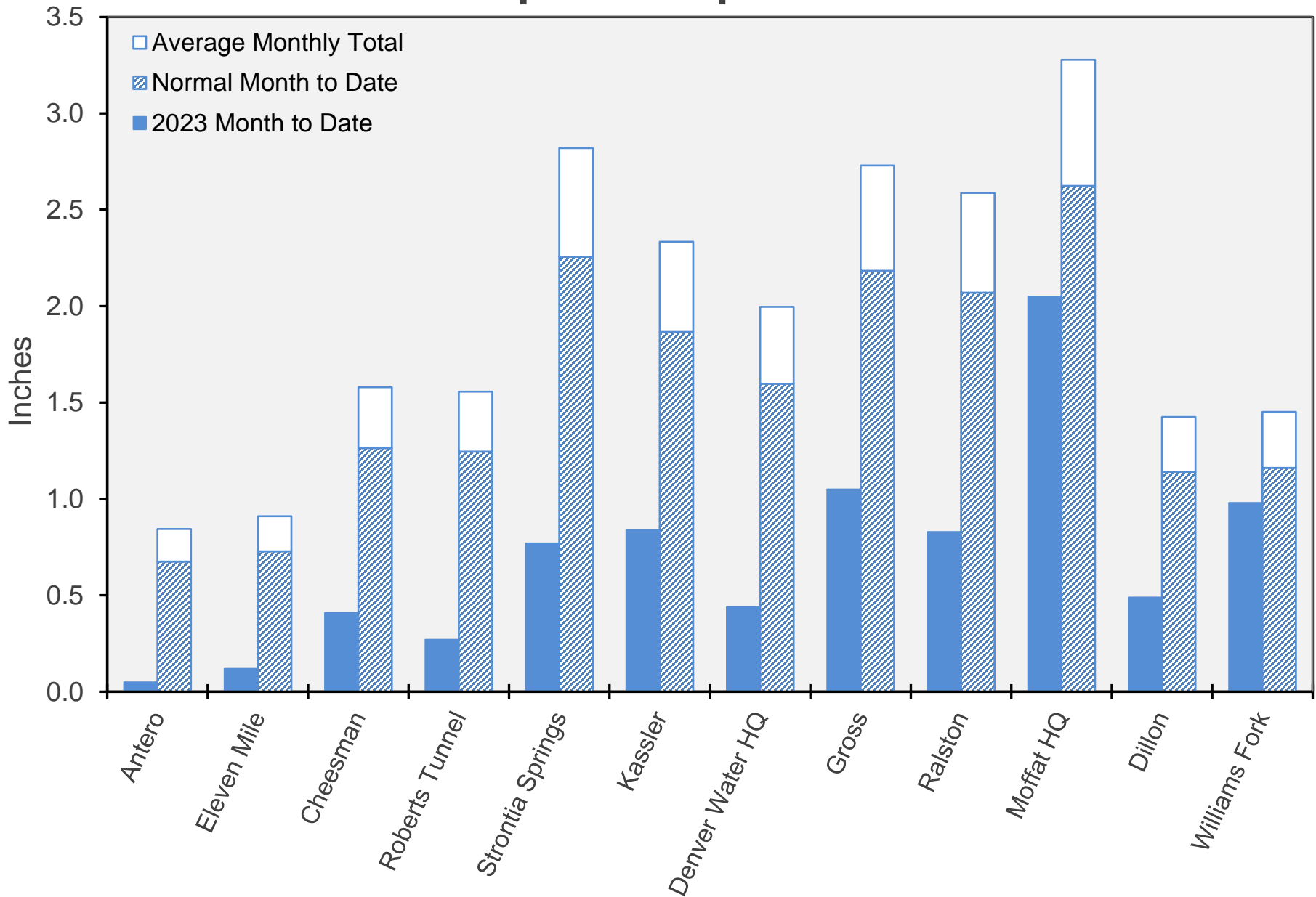
# Supply Reservoir Contents



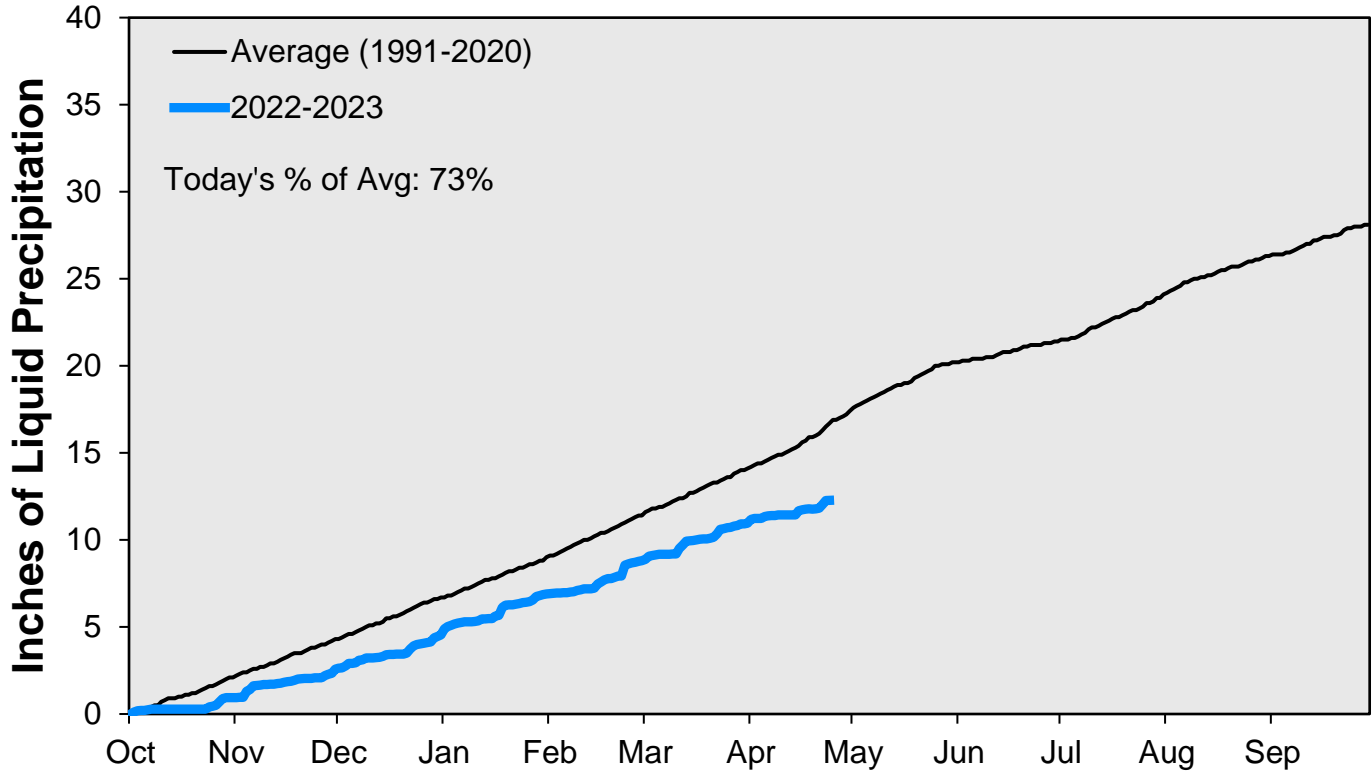
Note: Denver Water forecasts seasonal reservoir storage contents under dry future weather, normal future weather and wet future weather scenarios.

Gross Reservoir storage is limited to 29,938 acre feet in total storage during construction activities. The percent full figures are based on the normal usable capacity of 29,811 acre feet.

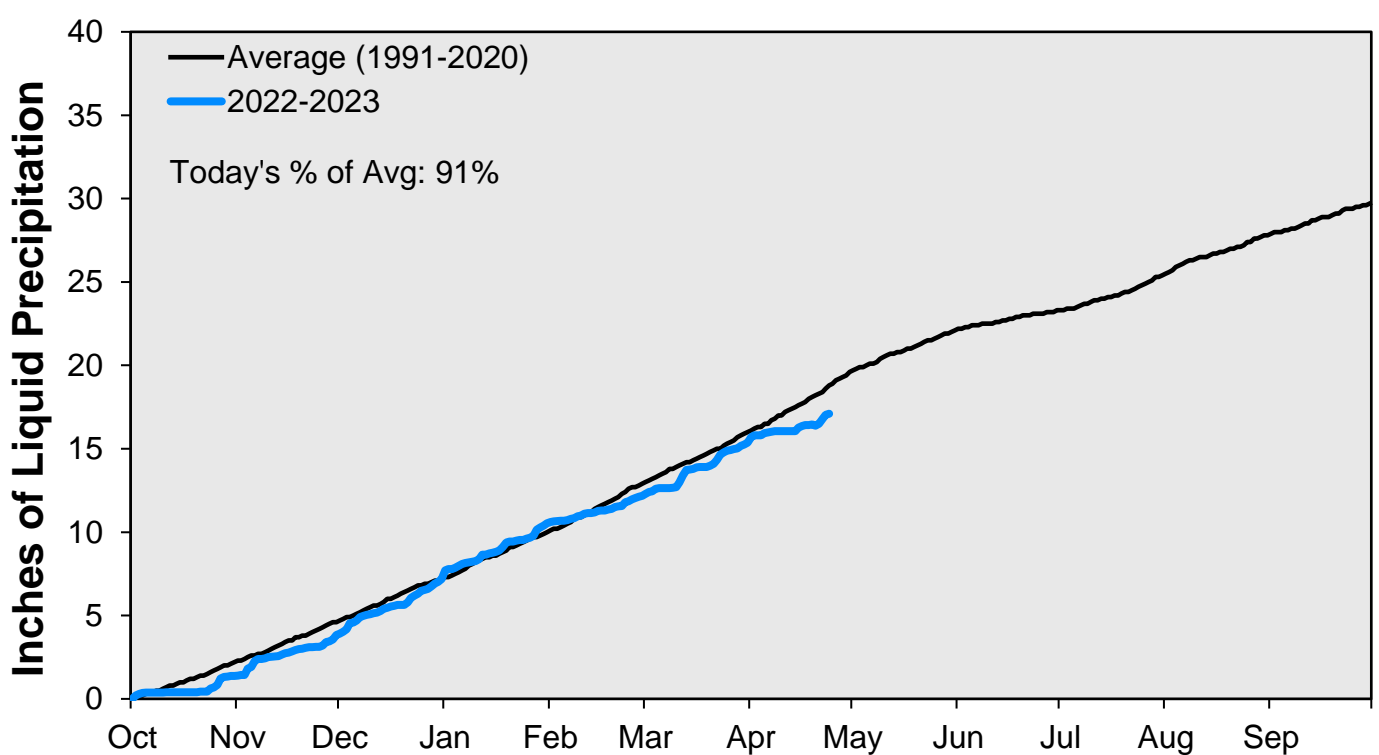
# April Precipitation



### CUMULATIVE PRECIPITATION: SOUTH PLATTE RIVER

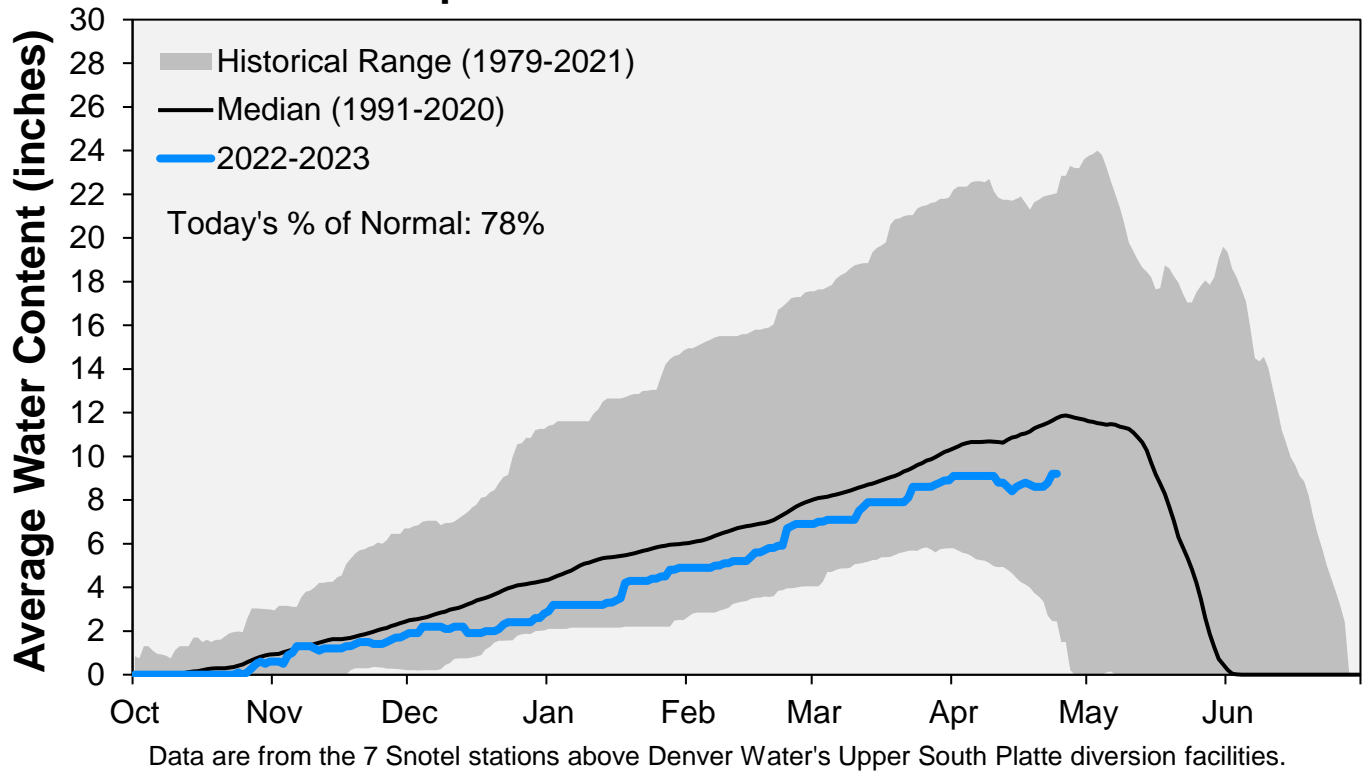


### CUMULATIVE PRECIPITATION: COLORADO RIVER WATERSHED

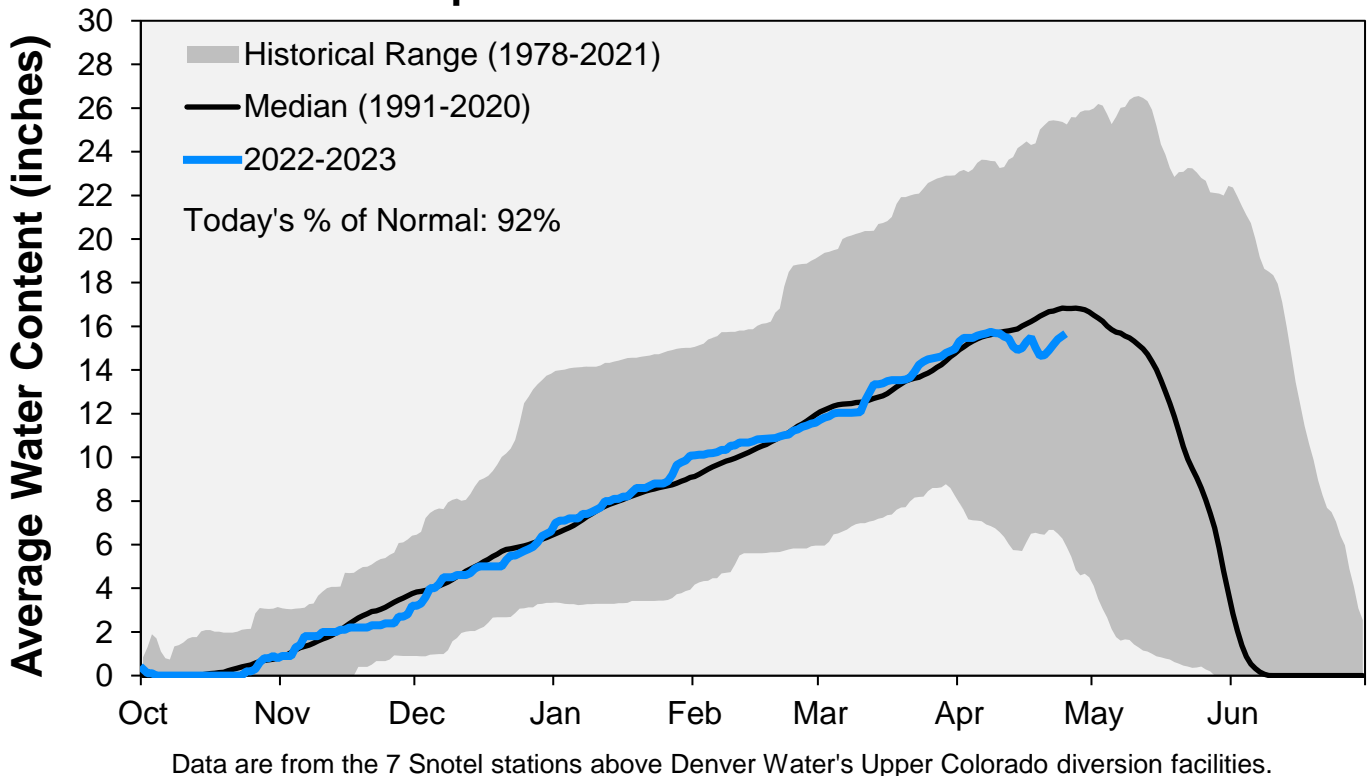


Data are from the 7 SNOTEL stations above Denver Water's Upper Colorado diversion facilities.

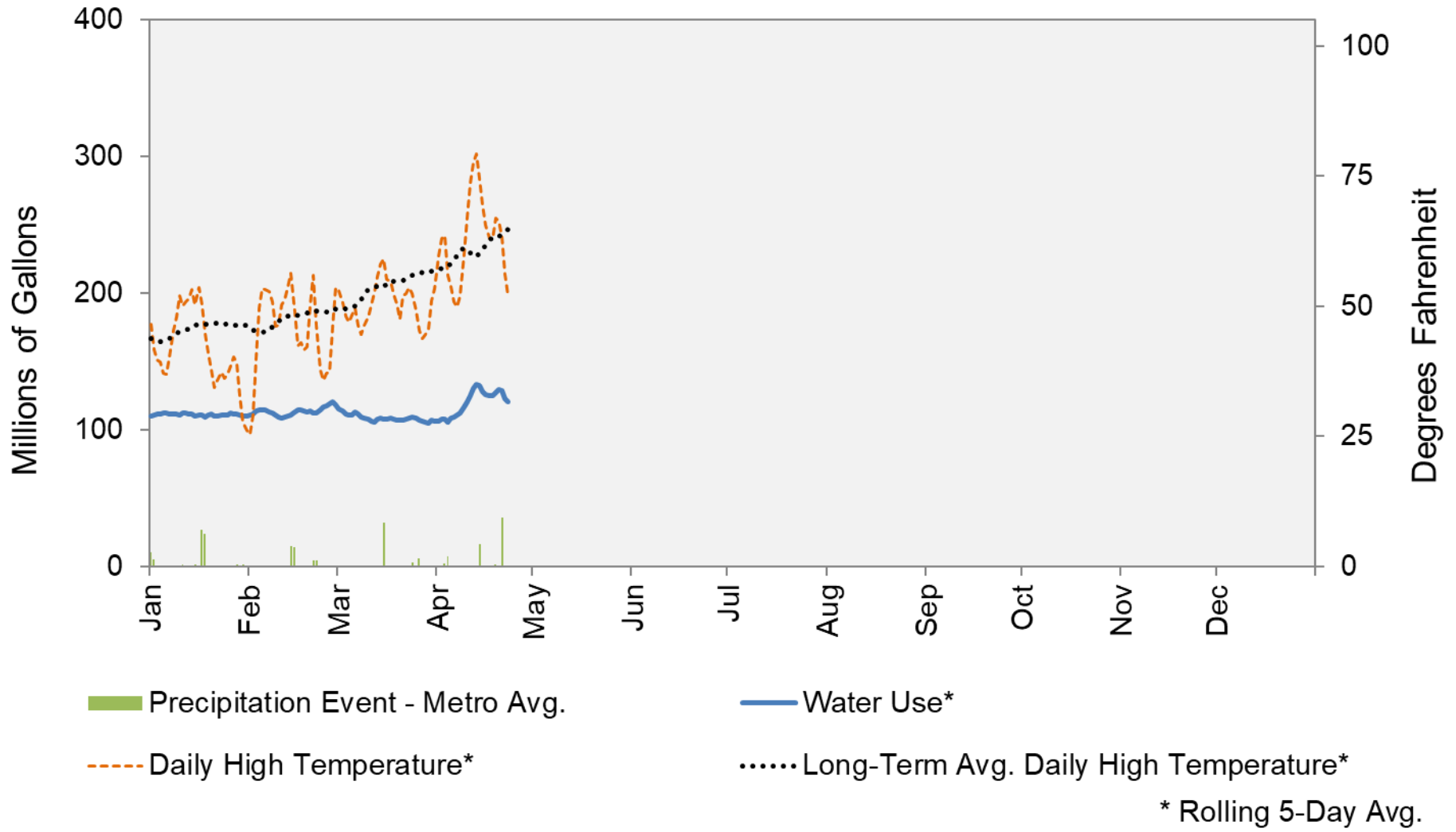
### Snowpack: South Platte River Watershed



### Snowpack: Colorado River Watershed



## 2023 Water Use and Weather Conditions



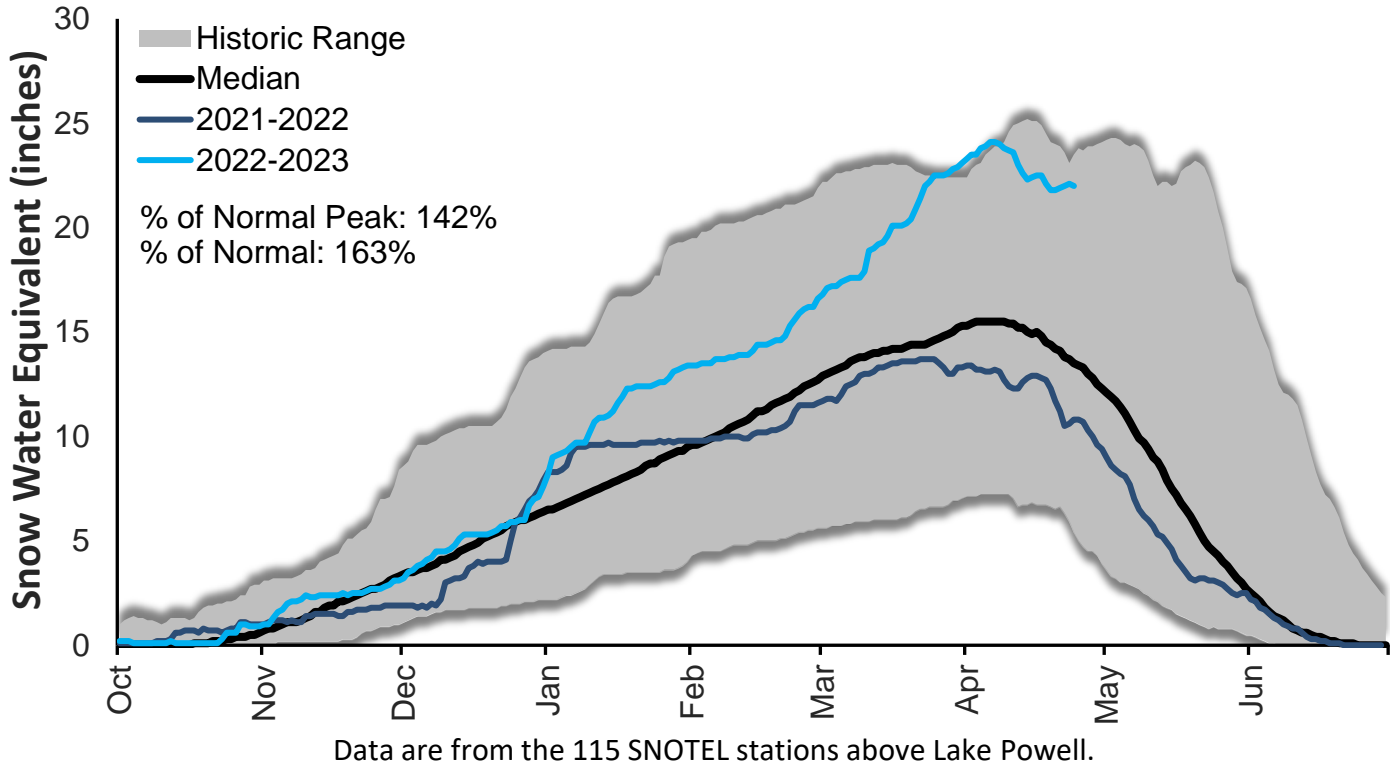
April 24, 2023

Denver Water Use and Reservoir Contents 2023													
	Jan	Feb	Mar	Apr	May	Jun	Jul	Aug	Sep	Oct	Nov	Dec	YTD-Avg
Predicted End-of-Month Supply Reservoir Contents (Full = 518,449 AF)	422,200												
Actual End-of-Month Supply Reservoir Contents (AF)	427,785	423,299	418,434										
Actual % Full	83%	82%	81%										
Historical Median % Full	81%	80%	79%	79%	88%	98%	95%	92%	88%	85%	84%	83%	
2023 Expected Daily Use (MG)	102	102	102	125	190	275	310	297	270	172	108	102	107
Actual Daily Use (MG)	1	105	111	105	107								
	2	115	116	114	111								
	3	113	119	109	108								
	4	112	114	112	102								
	5	117	111	114	113								
	6	104	111	114	113								
	7	112	111	109	117								
	8	114	112	99	117								
	9	110	110	106	123								
D	10	112	103	109	132								
A	11	112	108	107	137								
Y	12	112	113	106	141								
	13	112	115	110	131								
O	14	109	116	109	121								
F	15	106	111	107	111								
	16	117	116	107	123								
M	17	109	113	108	138								
O	18	106	111	107	134								
N	19	116	112	105	130								
T	20	110	115	108	124								
H	21	109	111	109	118								
	22	111	113	109	110								
	23	111	123	111	120								
	24	112	121	110									
	25	111	121	102									
	26	115	120	104									
	27	107	118	107									
	28	110	113	106									
	29	109		106									
	30	108		112									
	31	113		101									
Monthly Average	111	114	108	121									113
% of 2023 Expected Daily Use	109%	112%	106%	97%									106%

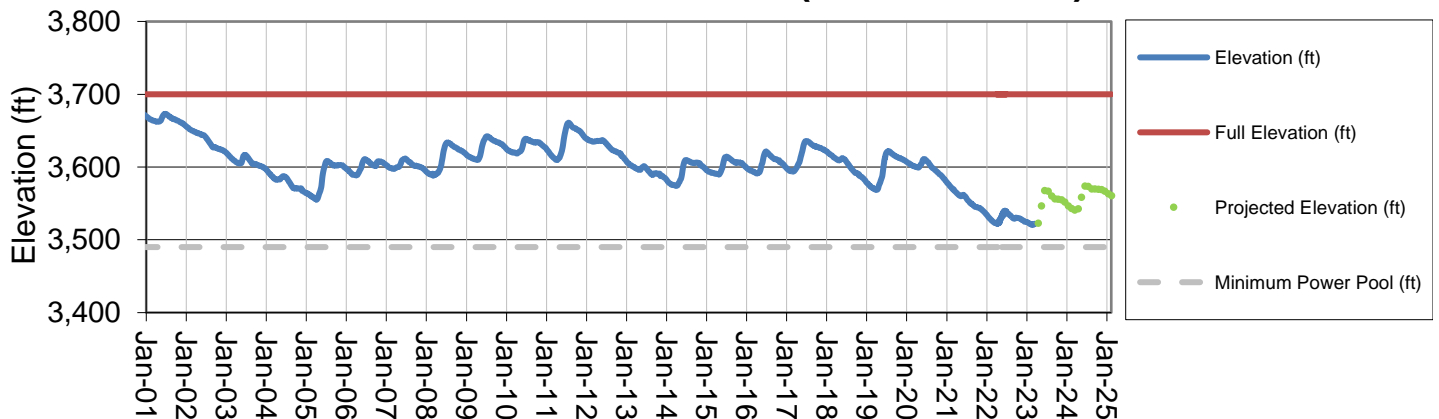
Notes: 1) "AF" denotes acre-feet. "MG" denotes million gallons. 2) Expected Daily Use is based on historical use with normal weather conditions. 3) The predicted end-of-month supply reservoir contents figures assume normal supply weather after April 3<sup>rd</sup>, 2023. 4) The differences between predicted and actual end-of-month supply reservoir contents are the result of normal estimation error of daily use, supply, evaporation, carriage losses and raw water deliveries. 5) Predicted supply reservoir contents last updated on April 3<sup>rd</sup>, 2023. 6) Daily water figures are subject to change.

# Lake Powell Report\*

## Colorado River Above Lake Powell Snowpack



## Lake Powell Elevation (2001-Current)



\* Denver Water gets half of its water supply from the Colorado River and closely monitors conditions at Lake Powell and within the greater Colorado River Basin.