



WATER WATCH REPORT

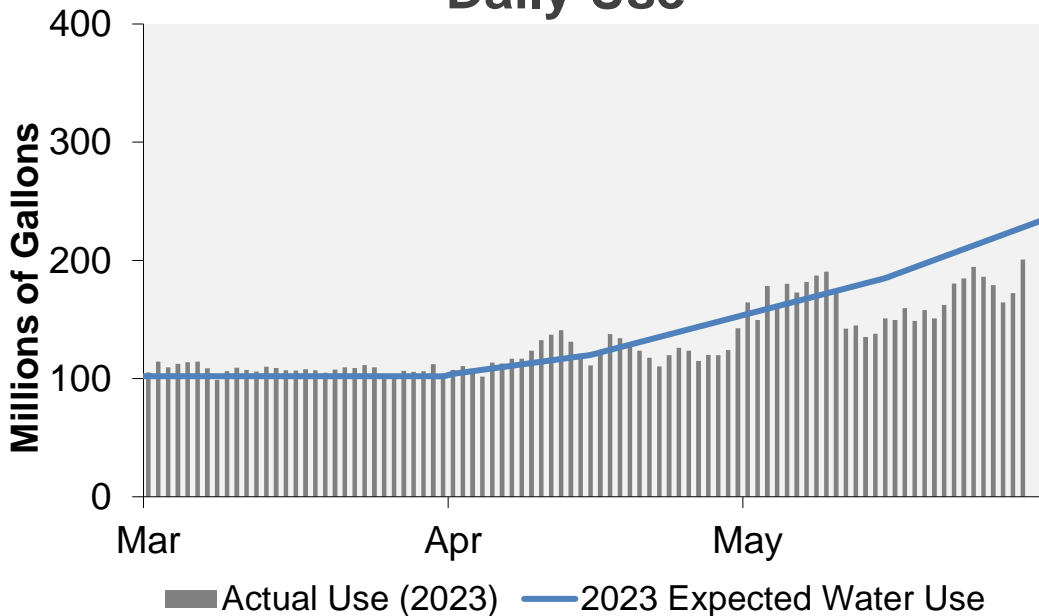
May 30, 2023

Supply Reservoir Contents

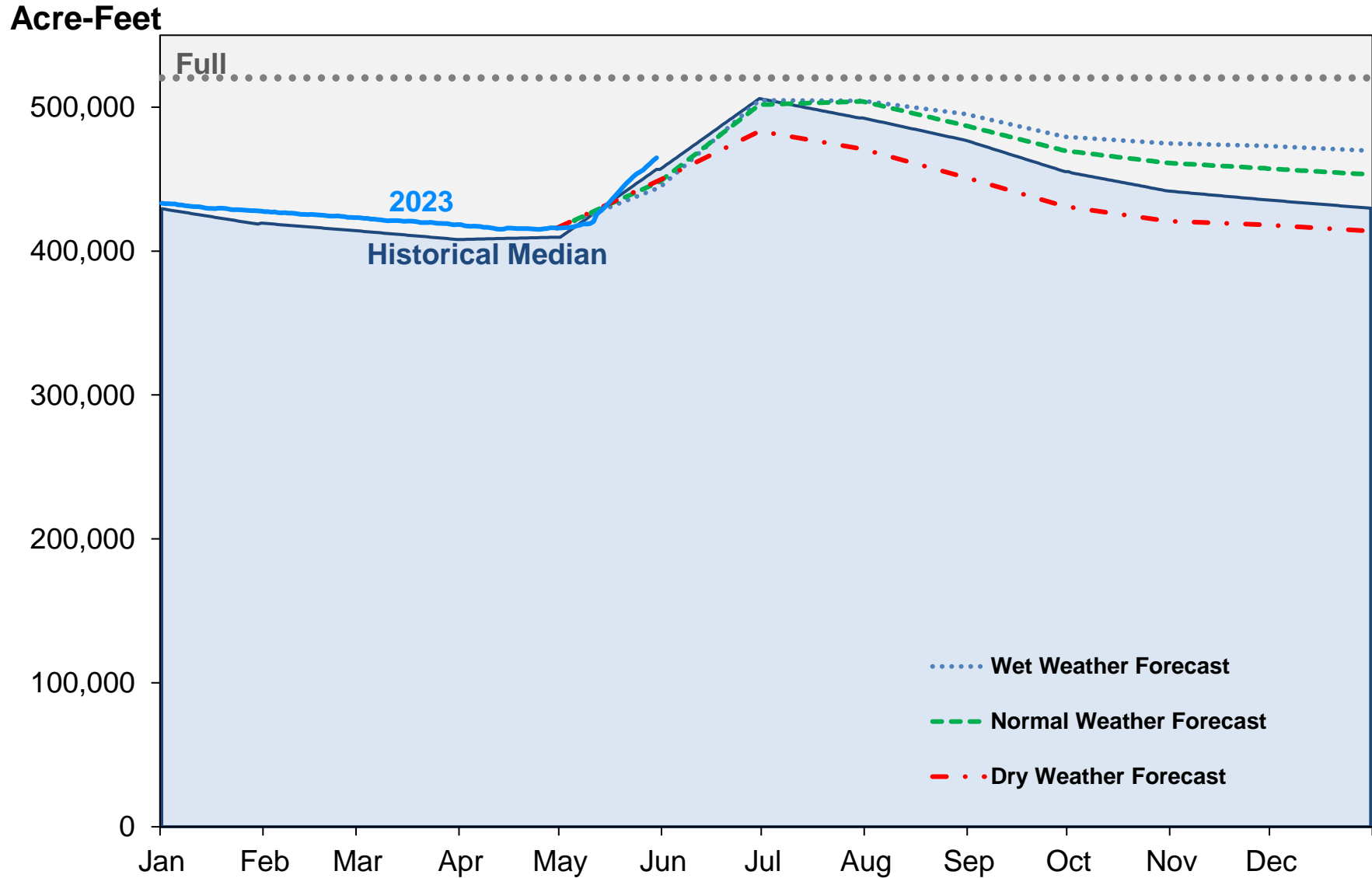
Reservoir	Capacity		Current Usable Contents (acre-feet)	Percent Full		
	(acre-feet)			Current	Last	Historical
	Total	Usable	Year		Median	
Antero	20,122	20,067	20,021	100%	102%	100%
Eleven Mile	97,779	97,779	99,143	101%	103%	102%
Cheesman	79,064	79,064	75,285	95%	79%	93%
Marston	19,108	13,133	8,283	63%	52%	78%
Strontia Springs	7,863	7,163	5,904	82%	93%	93%
Chatfield	28,709	12,415	12,415	100%	31%	93%
Dillon	257,304	249,095	222,610	89%	84%	93%
Gross*	41,811	29,811	13,031	44%	55%	59%
Ralston	10,776	7,276	5,755	79%	86%	84%
Meadow Creek	5,370	4,520	2,370	52%	84%	37%
Total	567,906	520,323	464,817	89%	84%	88%

*Gross Reservoir storage is limited to 29,938 acre feet in total storage during construction activities. The percent full figures are based on the normal usable capacity of 29,811 acre feet.

Daily Use



Supply Reservoir Contents

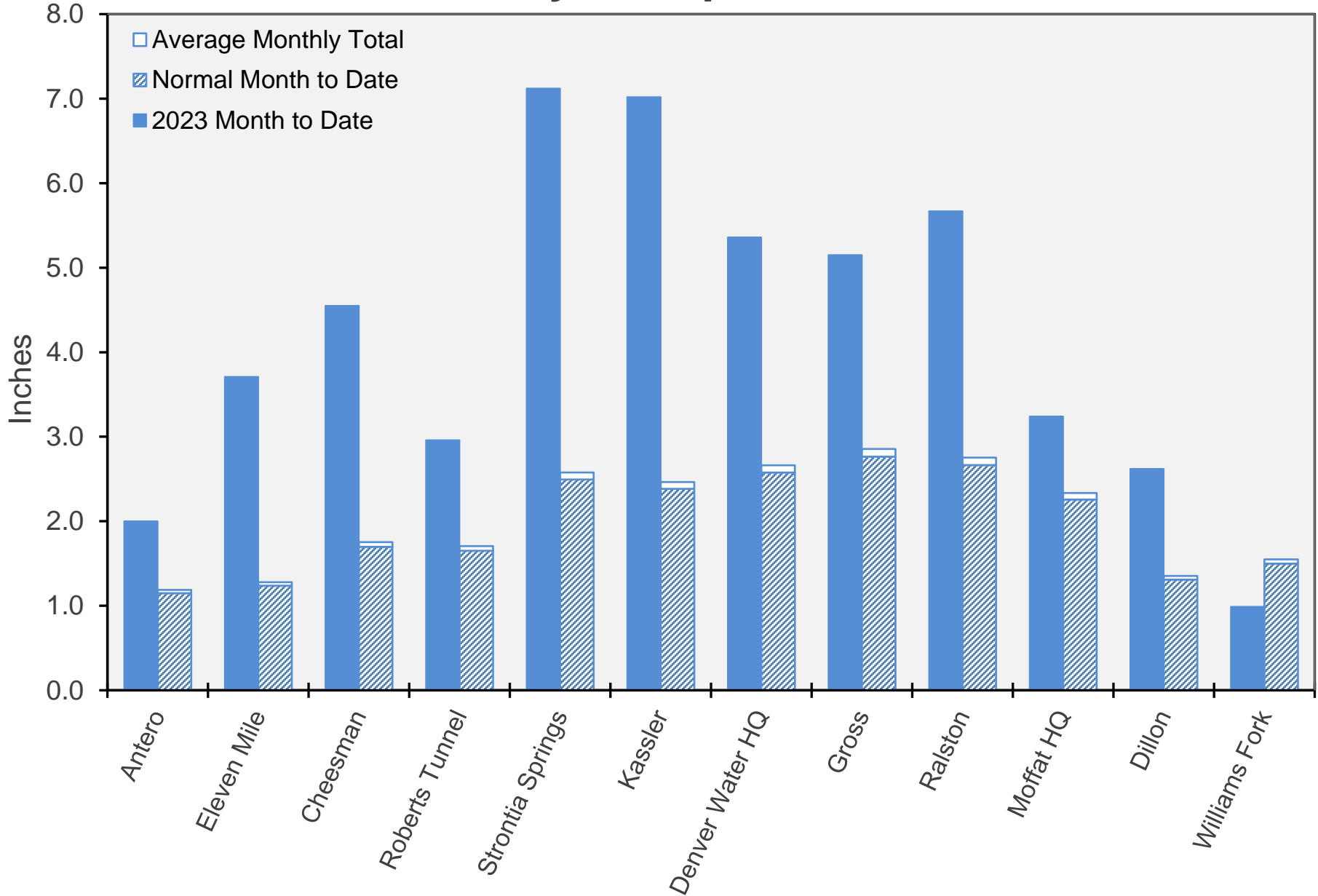


Note: Denver Water forecasts seasonal reservoir storage contents under dry future weather, normal future weather and wet future weather scenarios.

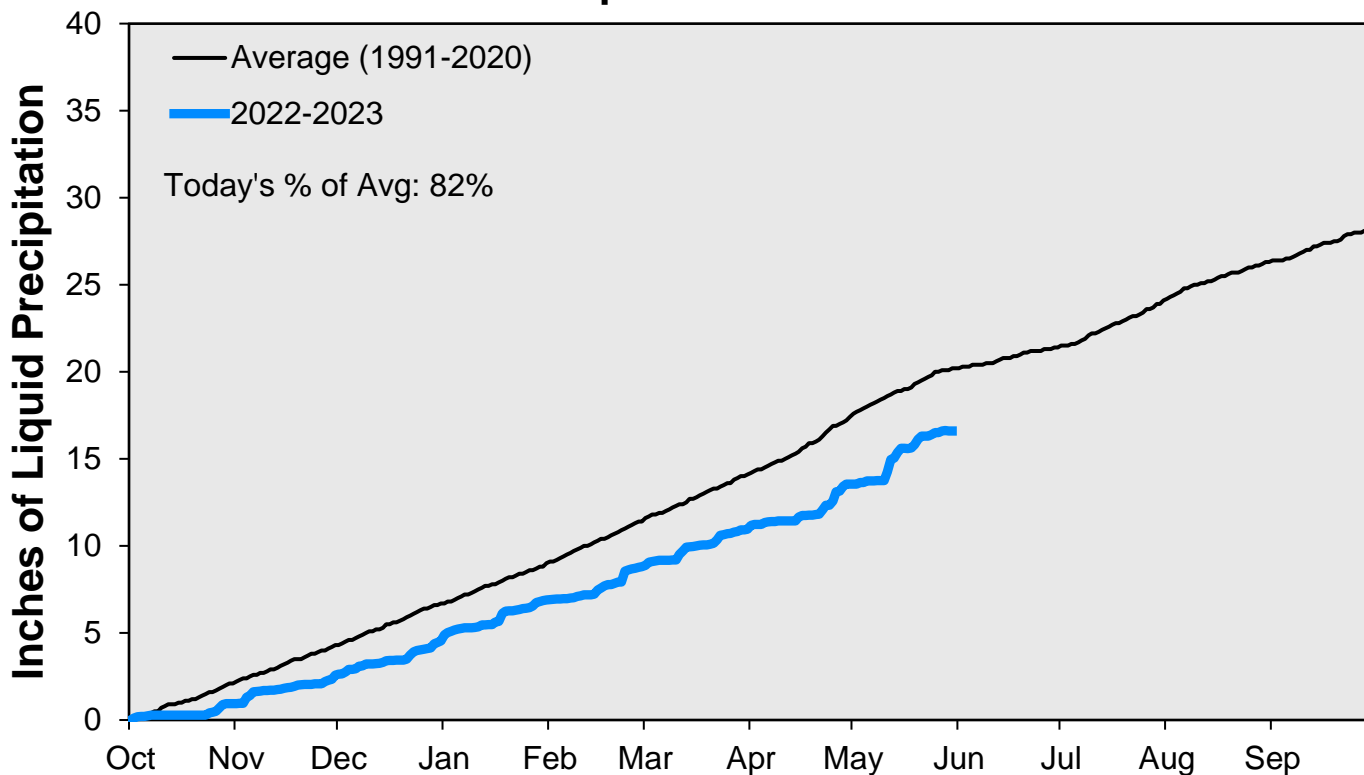
Gross Reservoir storage is limited to 29,938 acre feet in total storage during construction activities. The percent full figures are based on the normal usable capacity of 29,811 acre feet.

May 30, 2023

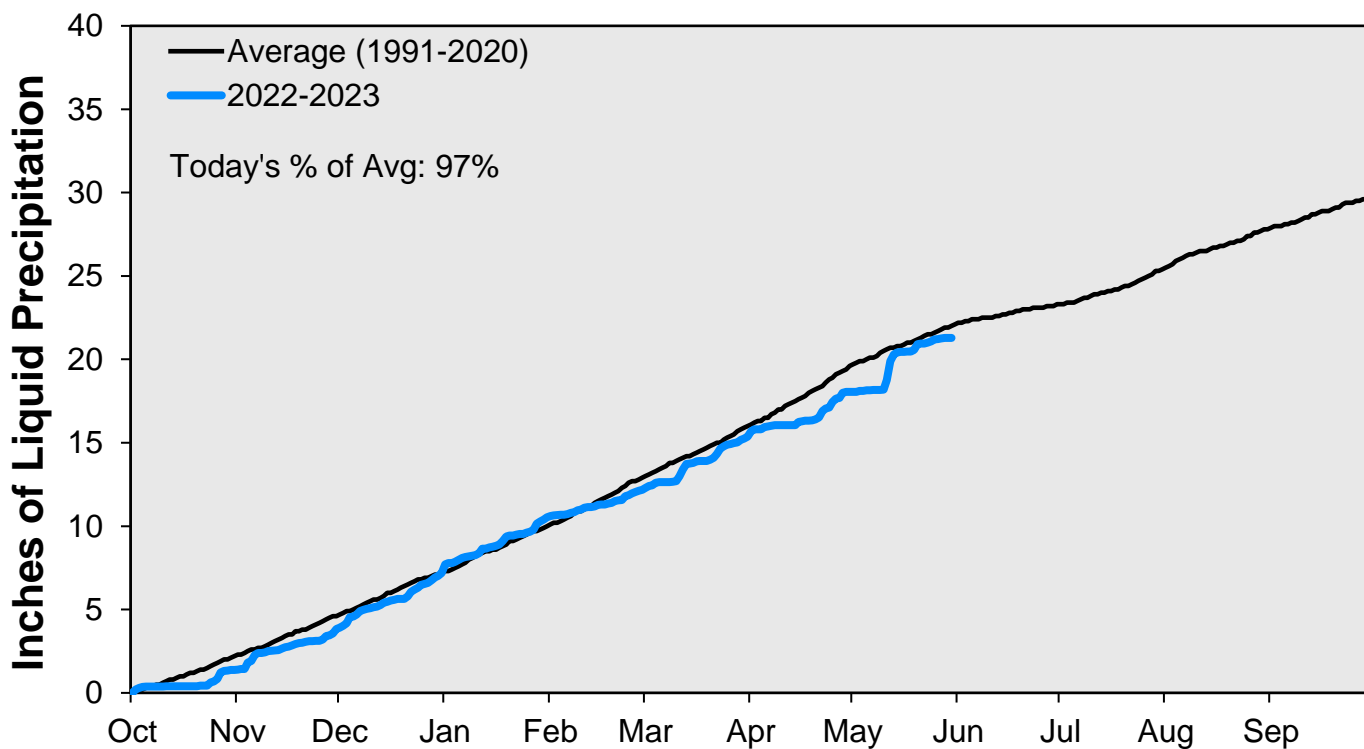
May Precipitation



Cumulative Precipitation: South Platte River

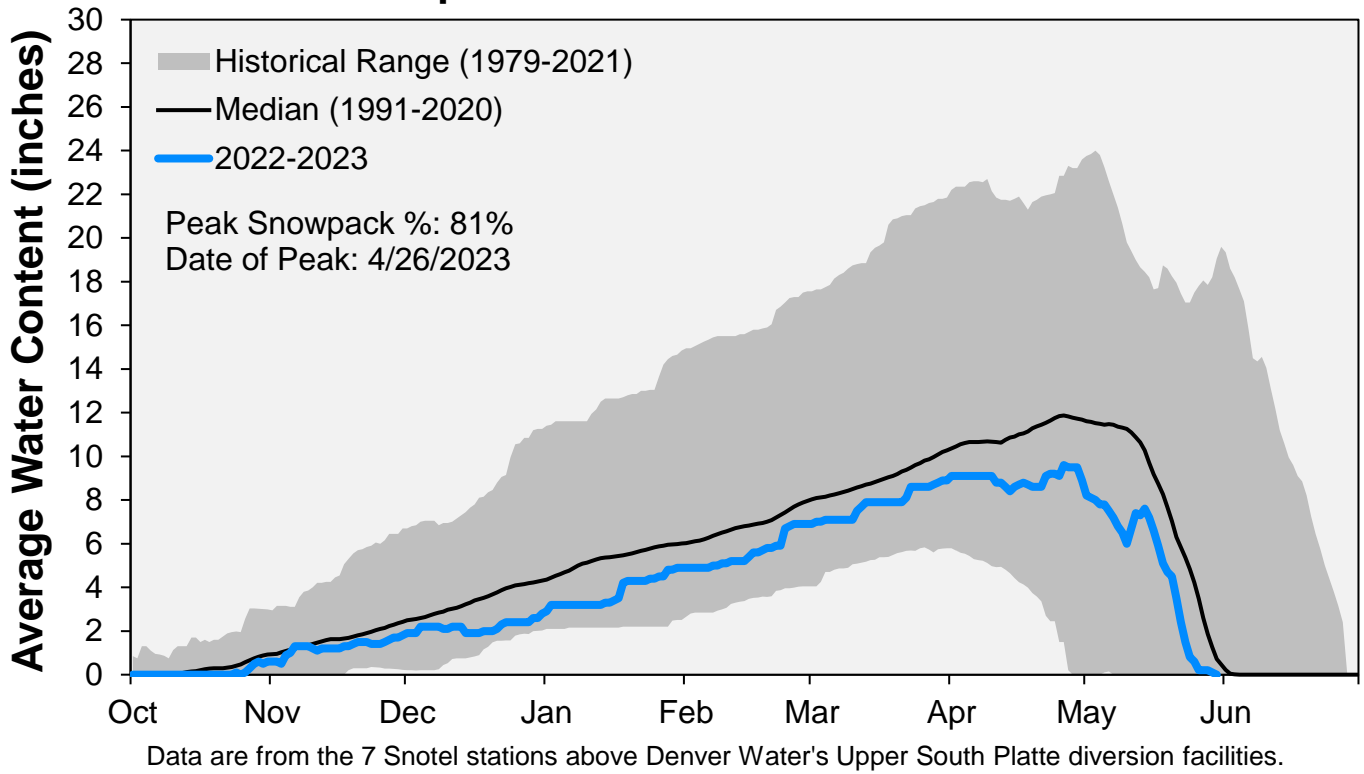


Cumulative Precipitation: Colorado River

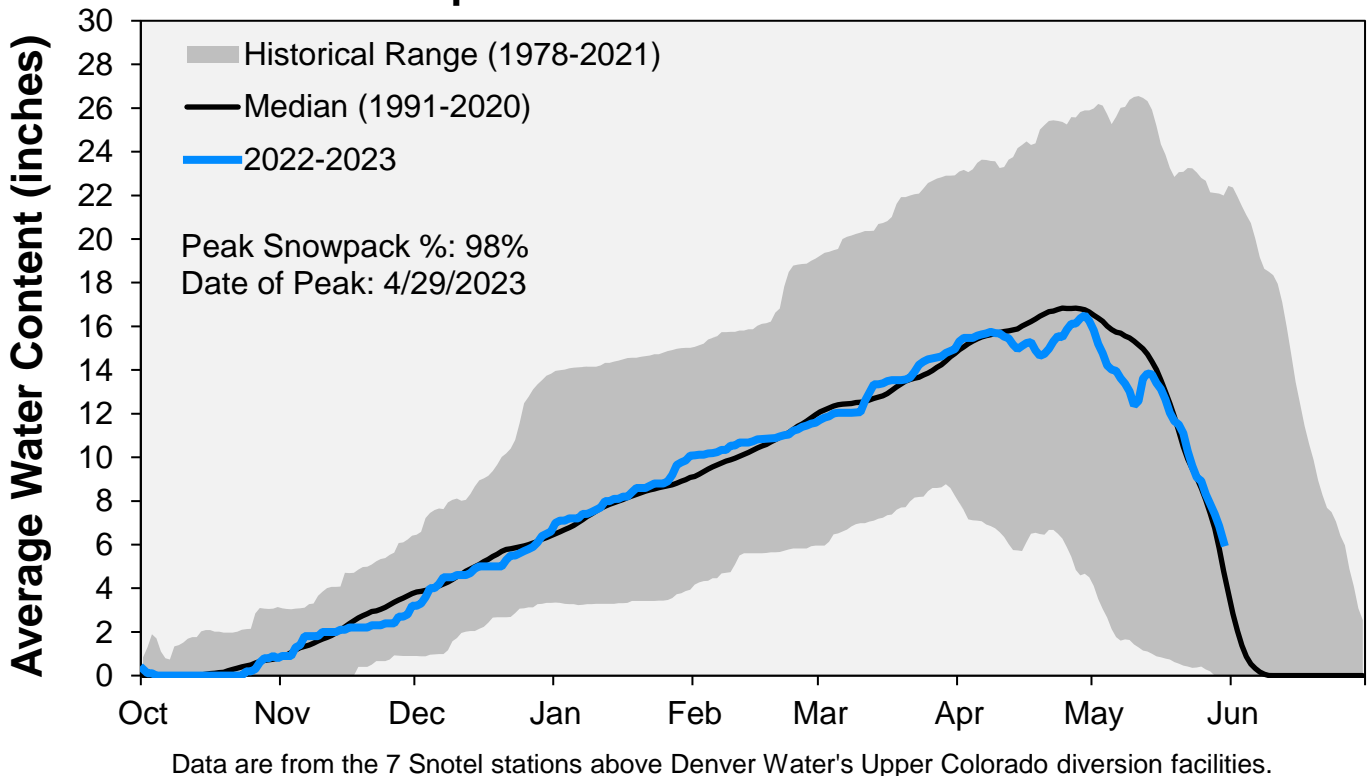


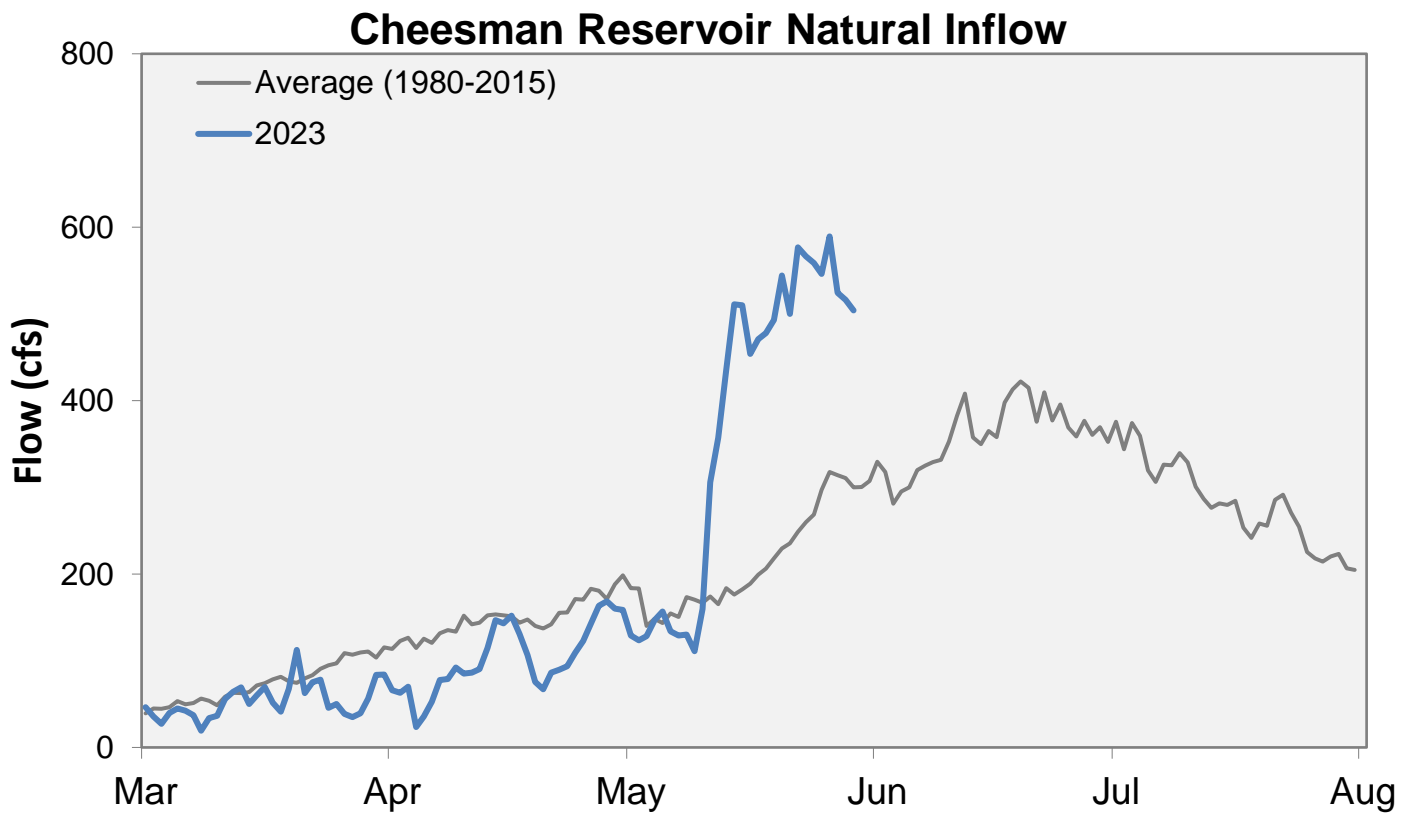
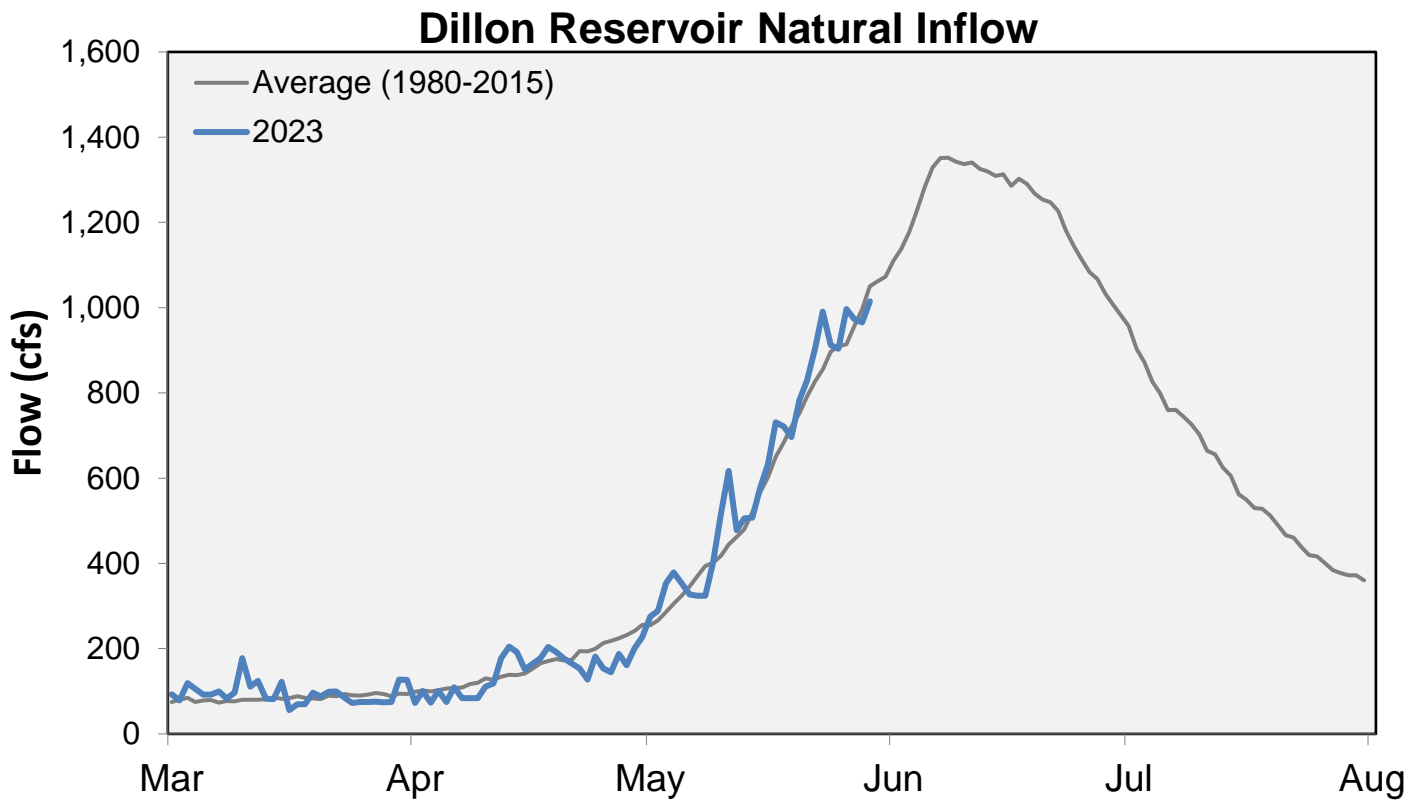
Data are from the 7 SNOTEL stations above Denver Water's Upper Colorado diversion facilities.

Snowpack: South Platte River Watershed

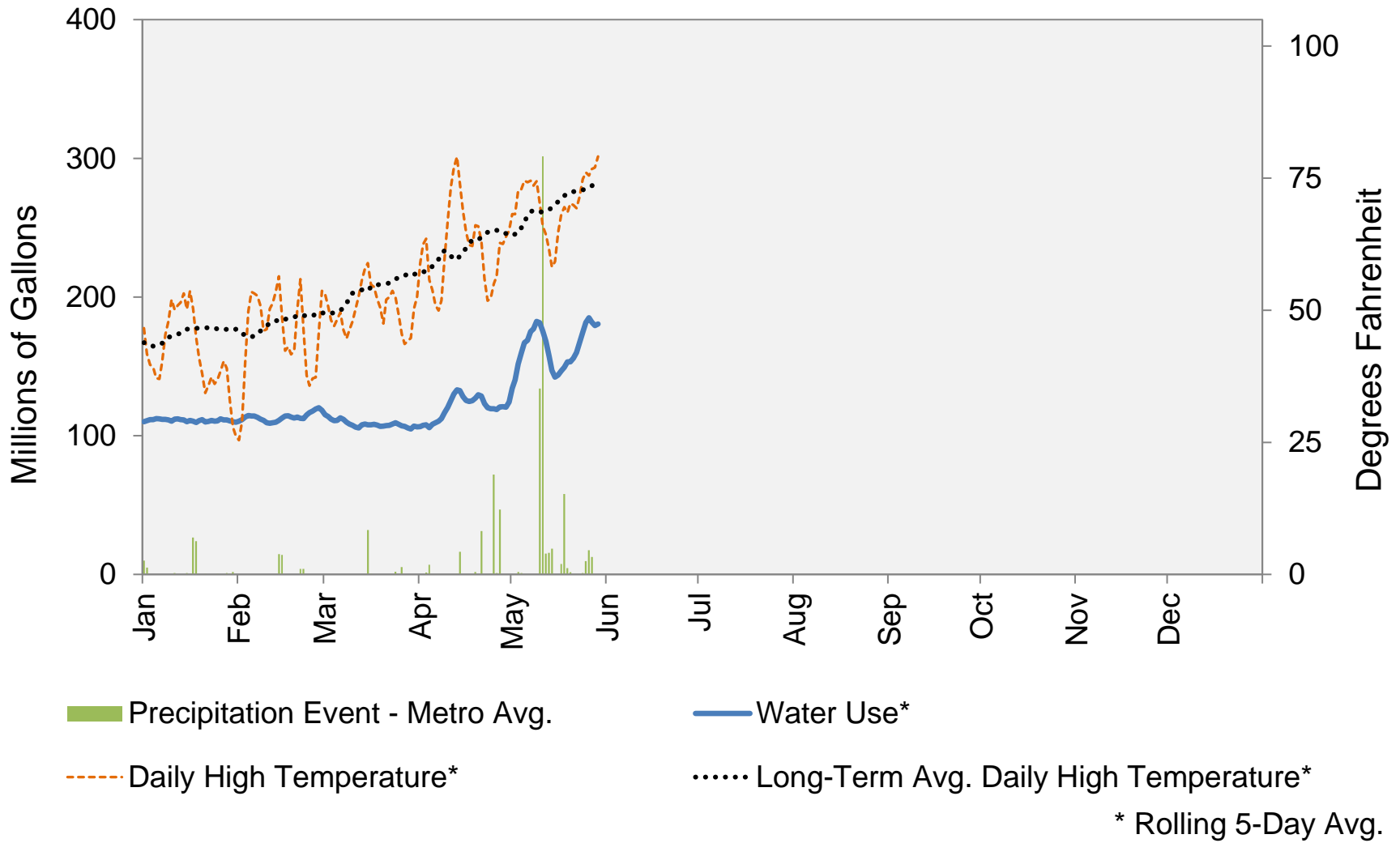


Snowpack: Colorado River Watershed





2023 Water Use and Weather Conditions



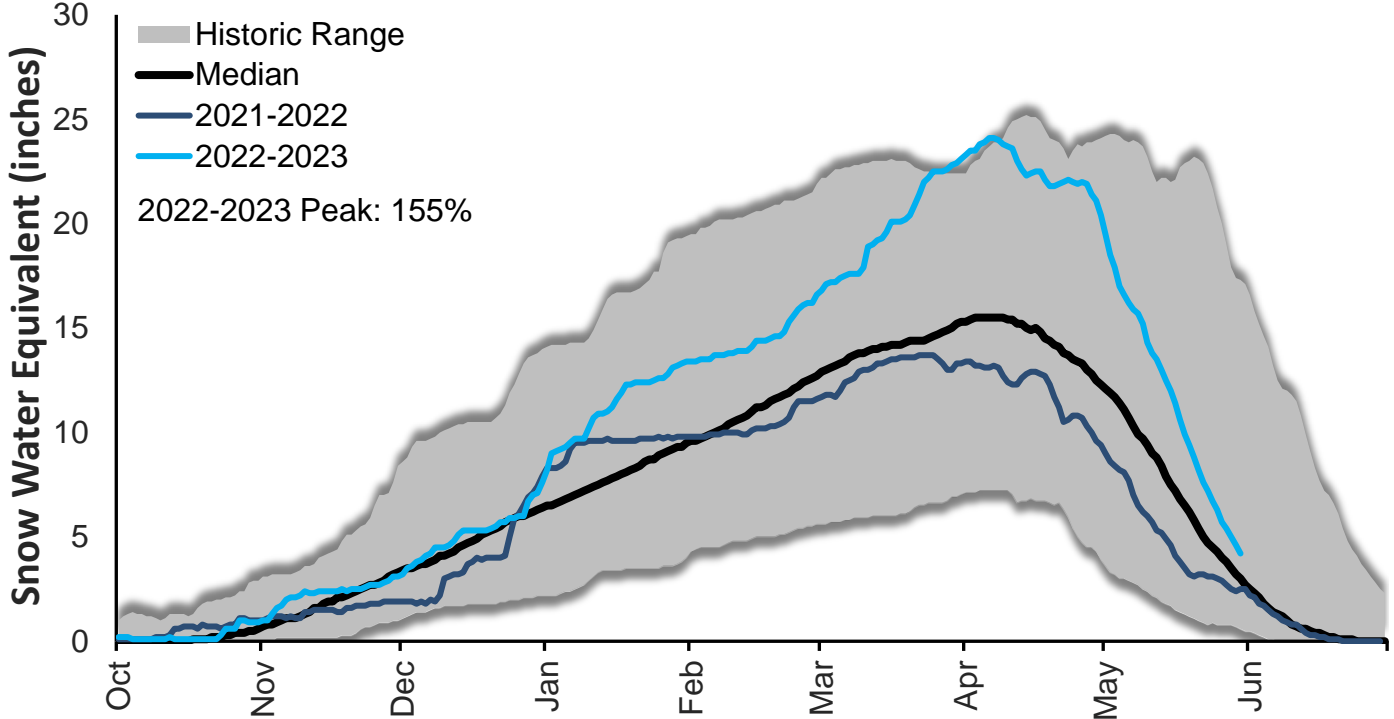
May 30, 2023

Denver Water Use and Reservoir Contents 2023													
	Jan	Feb	Mar	Apr	May	Jun	Jul	Aug	Sep	Oct	Nov	Dec	YTD-Avg
Predicted End-of-Month Supply Reservoir Contents (Full = 518,449 AF)	455,500												
Actual End-of-Month Supply Reservoir Contents (AF)	427,785	423,299	418,434	416,025									
Actual % Full	83%	82%	81%	80%									
Historical Median % Full	81%	80%	79%	79%	88%	98%	95%	92%	88%	85%	84%	83%	
2023 Expected Daily Use (MG)	102	102	102	125	190	275	310	297	270	172	108	102	124
Actual Daily Use (MG)	1	105	111	105	107	164							
	2	115	116	114	111	150							
	3	113	119	109	108	178							
	4	112	114	112	102	163							
	5	117	111	114	113	180							
	6	104	111	114	113	173							
	7	112	111	109	117	182							
	8	114	112	99	117	187							
	9	110	110	106	123	190							
D	10	112	103	109	132	175							
A	11	112	108	107	137	142							
Y	12	112	113	106	141	145							
	13	112	115	110	131	135							
O	14	109	116	109	121	138							
F	15	106	111	107	111	151							
	16	117	116	107	123	149							
M	17	109	113	108	138	159							
O	18	106	111	107	134	149							
N	19	116	112	105	130	158							
T	20	110	115	108	124	151							
H	21	109	111	109	118	162							
	22	111	113	109	110	180							
	23	111	123	111	120	185							
	24	112	121	110	126	195							
	25	111	121	102	124	186							
	26	115	120	104	115	179							
	27	107	118	107	120	164							
	28	110	113	106	120	172							
	29	109		106	124	201							
	30	108		112	143								
	31	113		101									
Monthly Average	111	114	108	122	167								124
% of 2023 Expected Daily Use	109%	112%	106%	97%	88%								100%

Notes: 1) "AF" denotes acre-feet. "MG" denotes million gallons. 2) Expected Daily Use is based on historical use with normal weather conditions. 3) The predicted end-of-month supply reservoir contents figures assume normal weather after May 1st, 2023. 4) The differences between predicted and actual end-of-month supply reservoir contents are the result of normal estimation error of daily use, supply, evaporation, carriage losses and raw water deliveries. 5) Predicted supply reservoir contents last updated on May 1st, 2023. 6) Daily water figures are subject to change.

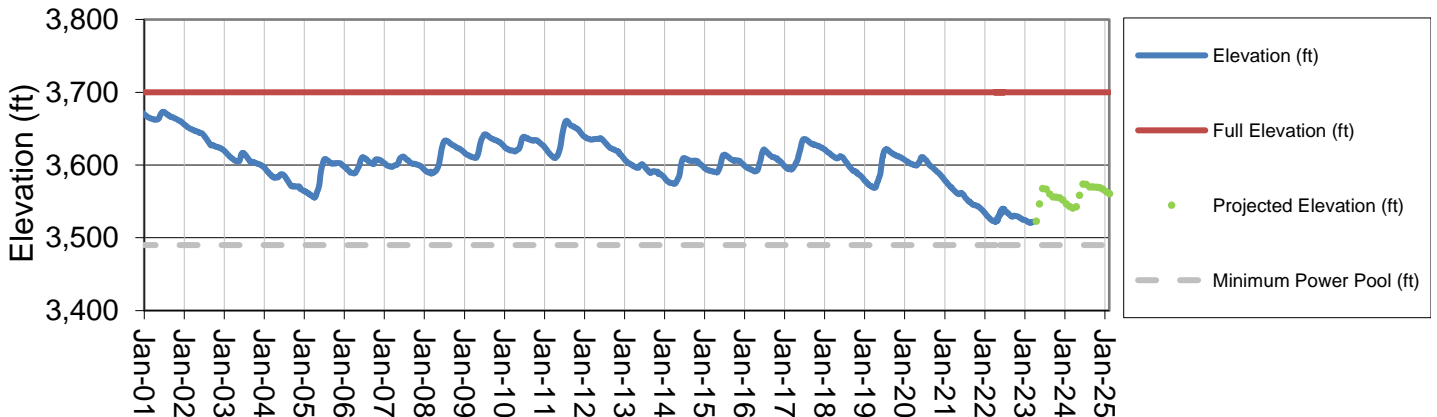
Lake Powell Report*

Colorado River Above Lake Powell Snowpack



Data are from the 115 SNOTEL stations above Lake Powell.

Lake Powell Elevation (2001-Current)



* Denver Water gets half of its water supply from the Colorado River and closely monitors conditions at Lake Powell and within the greater Colorado River Basin.