



An aerial photograph of a large construction site. The site is mostly cleared and sandy, with several pieces of heavy machinery like excavators and trucks scattered across it. In the background, there are residential houses and a street with parked cars. The image has a yellowish tint and a semi-transparent dark overlay at the bottom where the text is placed.

PLAN REVIEW AND CONSTRUCTION STATUS REPORT August - 2023

SUMMARY OF PROJECTS IN DESIGN AND IN CONSTRUCTION

New Development Projects – Various Stages of Design/Plan Review

All Developer project review and construction inspection is fully funded by the project owner, involving District Staff, District Engineer and Denver Water

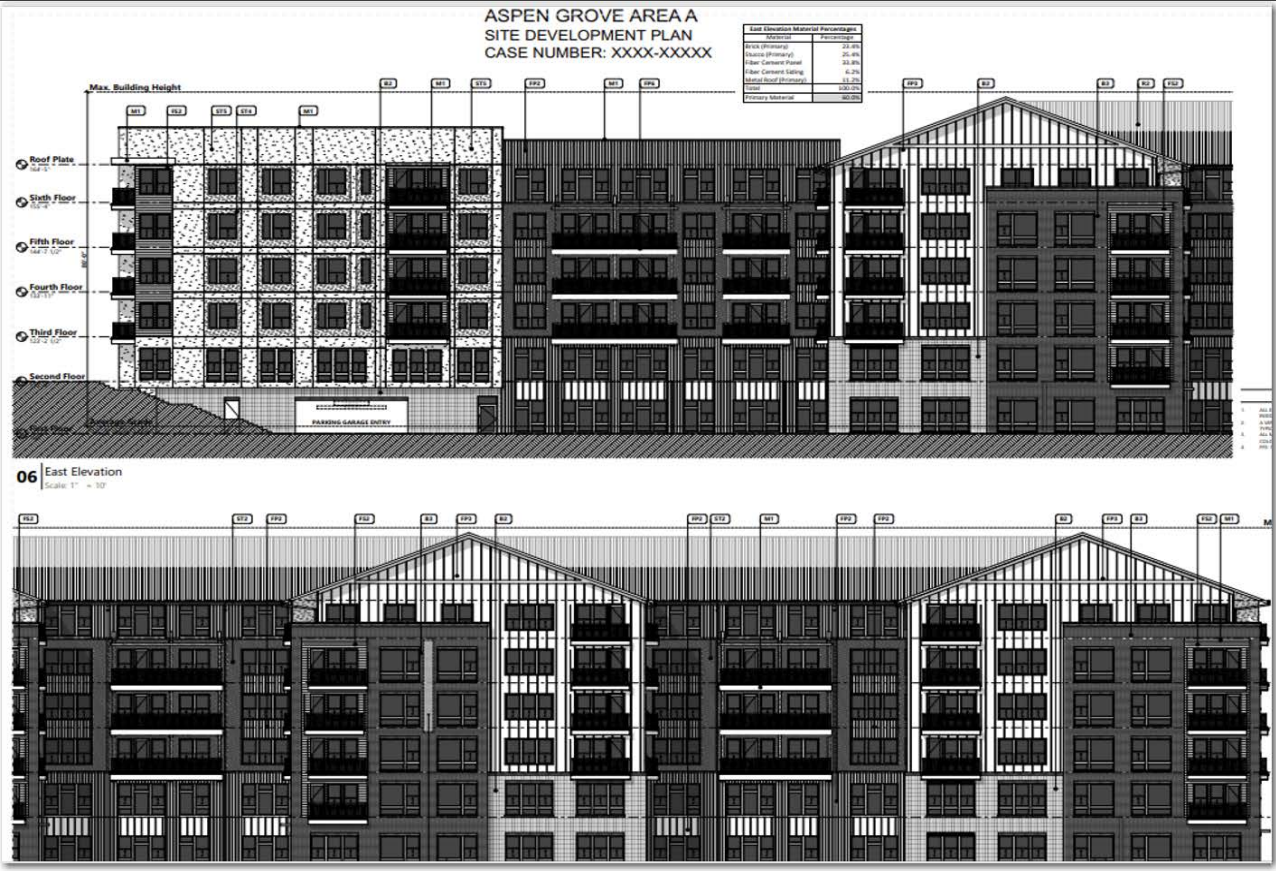
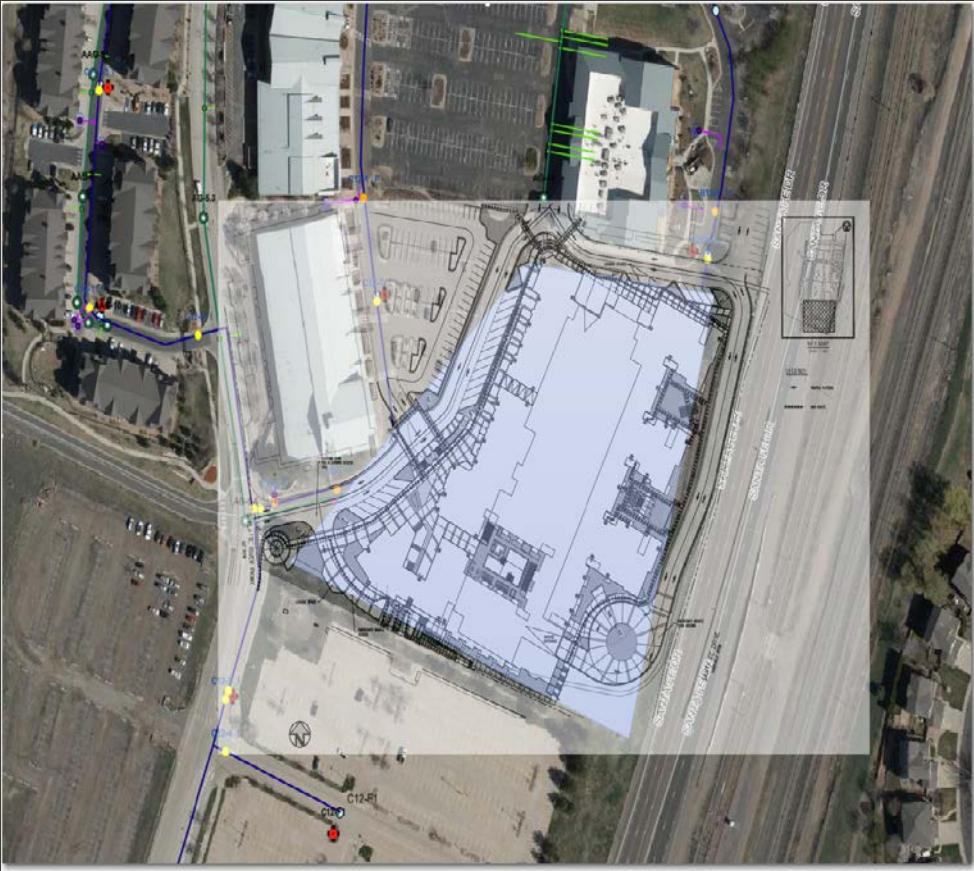
Projects in Southwest Metro:

1. *Santa Fe Park South - Mineral & Santa Fe – 1,1001 SFE's*
2. *Angeline Apartments - Mineral & Santa Fe – 243 SFE's*
3. *River Park/Quad-Road - Mineral and Santa Fe – 800 SFE's*
4. *RiverPark Outlook Mineral and Santa Fe 240 SFE's*
5. *Parcel J Apartments - Mineral & Santa Fe – Multi Family –*
6. *Valvoline Quick Lube – Coal Mine and Kipling – (Fire Hydrant)*
7. *Westend Ridge – Coal Mine and Independence – Multi-family – 109 SFE's*
8. *Ken Caryl Commerce – Ute & Toller – Warehouse*

Projects in Platte Canyon:

1. *Ken Caryl Retail Center Fil 2 - Ken Caryl & Pierce – Commercial Development*
2. *Arcadia Creek – Leawood and Sheridan (Residential) 14 SFE's*
3. *Christian Brother Automotive – Pierce and Coal Mine (south of King Soopers)*
4. *Vintage Overlook – Residential – 7 SFE's*

Aspen Grove Redevelopment – 6 Floors - 481 Units



Overall Santa Fe Development



NEW DEVELOPMENT PROJECTS IN CONSTRUCTION:

Platte Canyon:

- 1. Millstone at Columbine - Bowles and Platte Canyon – Sewer and water Near Conditional Acceptance*

Southwest Metro:

- 1. Santa Fe Widening – Water construction scheduled for late 2023 – Hydrant relocation*
- 2. Santa Fe Park South – Sewer and Water - in construction*

Millstone at Columbine - PC

- Millstone water main is now a looped system. Final tie-in was achieved July 3rd, 2023.
- Waiting on Conditional Acceptance deliverables from developer before conditionally accepting the project.
 - As-Builts.
 - Actual cost of wet utilities.
 - Conditional acceptance punch list walk, ETC..



Santa Fe Park South - SWM

- Sewer 70% complete – Reviewing video of sewer pipe
- Water Precon held – installed connections in S. Santa Fe.



D-Line Manhole Barrel Extension



REMOVED THE CONE SECTION FROM MANHOLE BASE



REBAR CAGE AT SEAM OF BASE AND BARREL SECTION



FORMED CONCRETE COLLAR AROUND SEAM

THE FOLLOWING ARE 2023 CAPITAL PROJECTS IN
Design / Construction

**CONSTRUCTION
AHEAD**

FOR MORE INFORMATION PLEASE VISIT:
www.plattecanyon.org/construction-corner
or call **303-979-2333**



➤ *2023 Platte Canyon Water Project – S. Depew St; from Ken Caryl to W. Canyon Trail:*



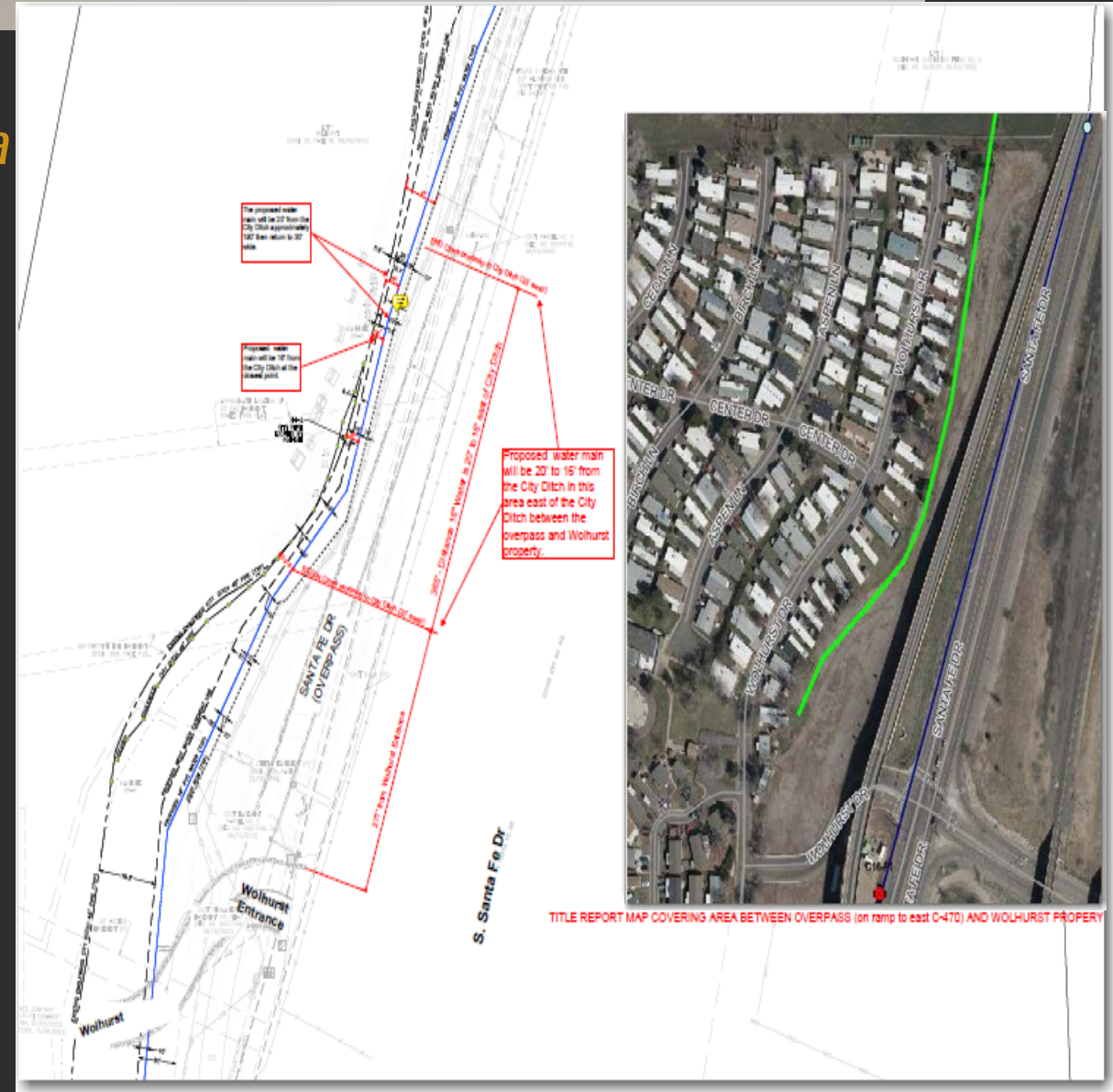
Pre-construction meeting held 8/24/23

*Schedule: Start Construction 9/11/23
Complete Construction 11/10/23*

➤ **2023 Southwest Metro – Water Project; S. Santa Fe Dr from Dad Clark Gulch to C-470**

➤ Concentrating on most feasible route – (Red line)

- Variance request to Denver Water regarding 16" water main easement width (50' down to 30')
- Negotiations with Englewood regarding City Ditch Prescriptive Easement width – Tim Flynn
- Obtain easement from property owner – Wolhurst
- Equine Center – Requested preliminary design plan
- Title search completed to determine property owners



QUESTIONS?