



WATER WATCH REPORT

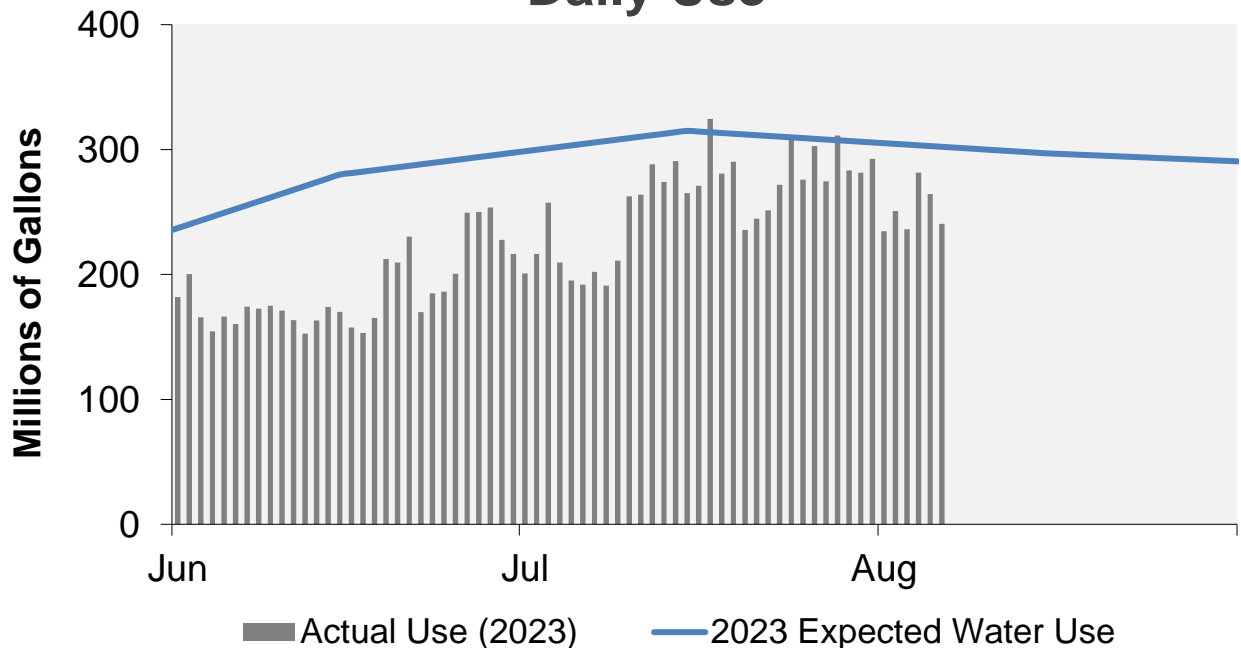
August 7, 2023

Supply Reservoir Contents

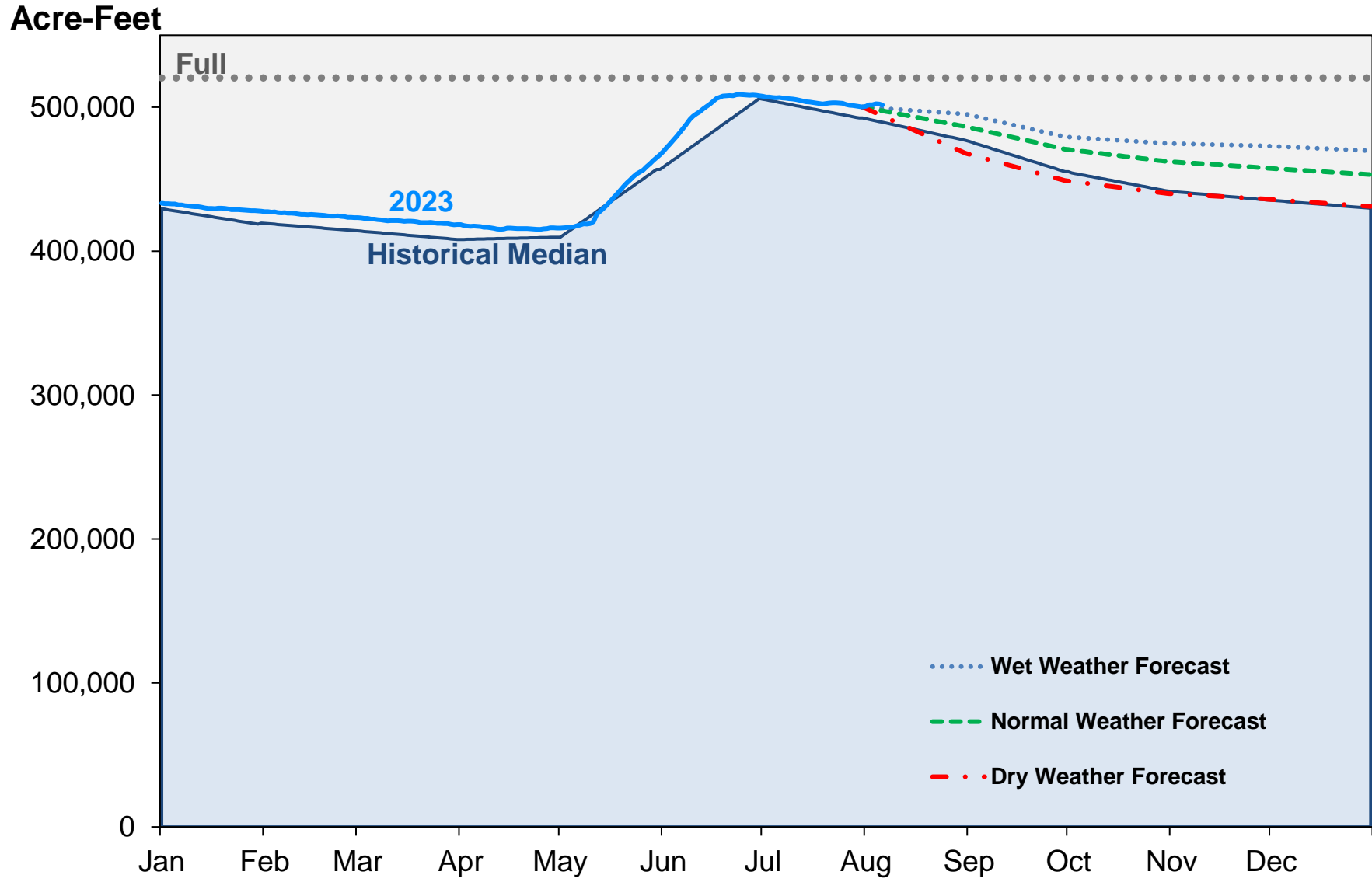
Reservoir	Capacity		Current Usable Contents (acre-feet)	Percent Full		
	Total (acre-feet)	Usable		Current	Last Year	Historical Median
Antero	20,122	20,067	19,955	99%	100%	100%
Eleven Mile	97,779	97,779	99,383	102%	102%	103%
Cheesman	79,064	79,064	77,570	98%	99%	97%
Marston	19,108	13,133	9,590	73%	71%	73%
Strontia Springs	7,863	7,163	5,674	79%	89%	94%
Chatfield	28,709	12,415	12,230	99%	40%	70%
Dillon	257,304	249,095	250,369	101%	91%	100%
Gross*	41,811	29,811	15,659	53%	52%	91%
Ralston	10,776	7,276	6,435	88%	88%	90%
Meadow Creek	5,370	4,520	4,018	89%	95%	85%
Total	567,906	520,323	500,884	96%	90%	94%

*Gross Reservoir storage is limited to 29,938 acre feet in total storage during construction activities. The percent full figures are based on the normal usable capacity of 29,811 acre feet.

Daily Use



Supply Reservoir Contents

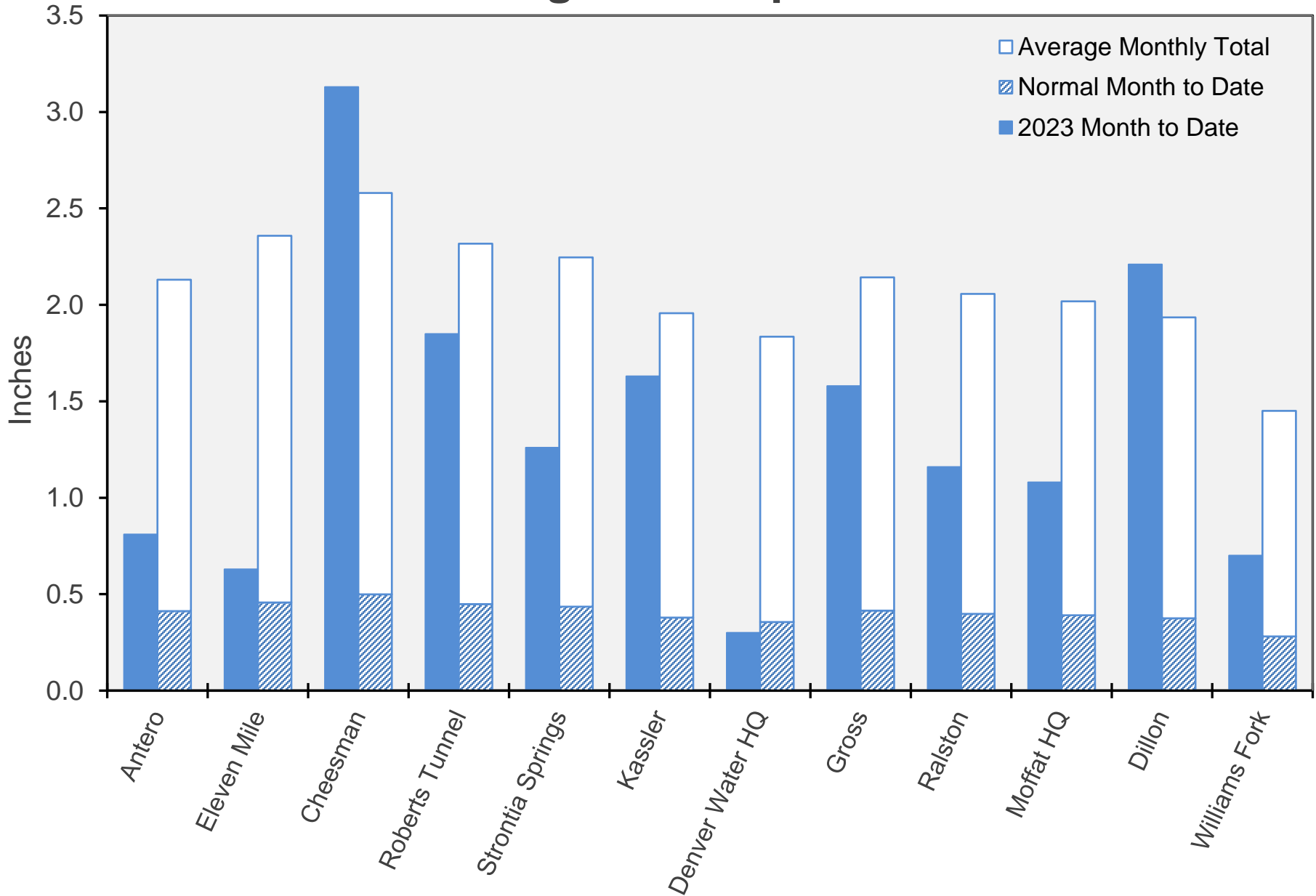


Note: Denver Water forecasts seasonal reservoir storage contents under dry future weather, normal future weather and wet future weather scenarios.

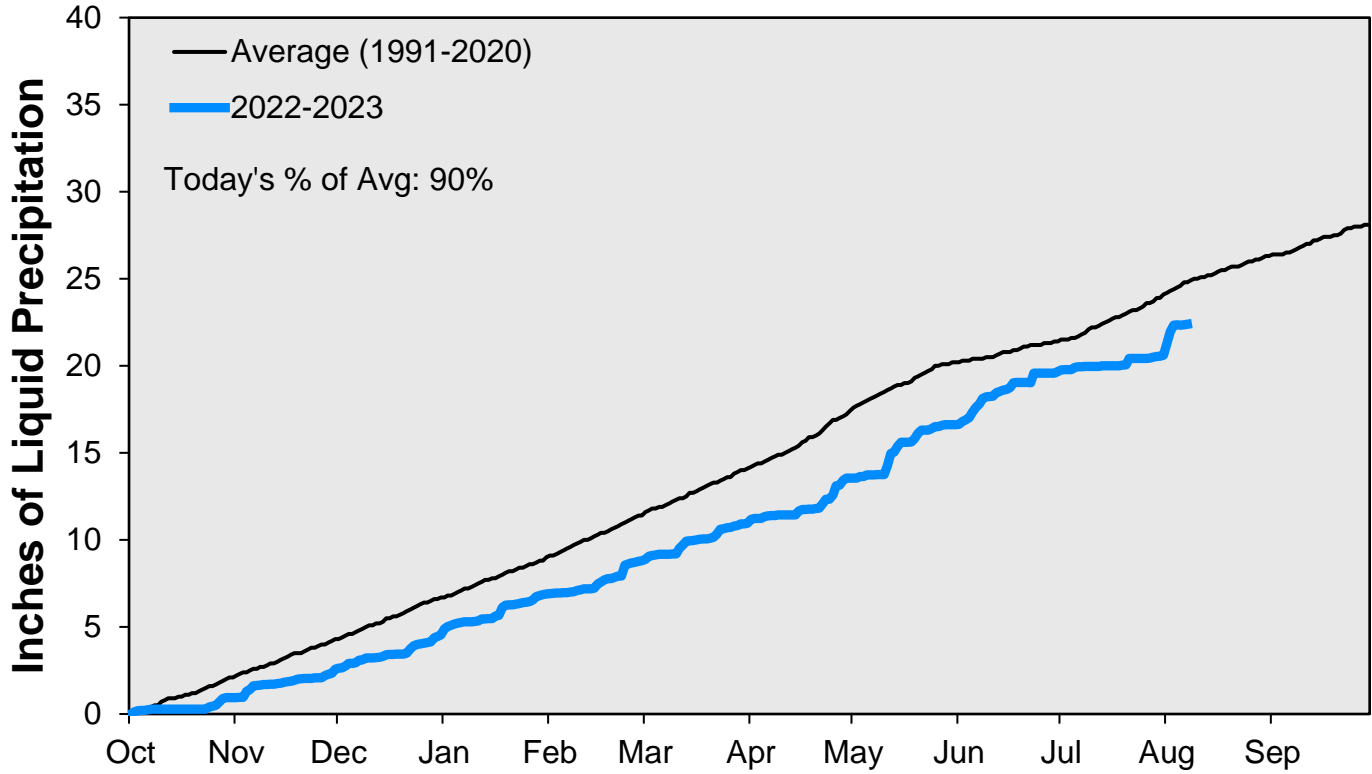
Gross Reservoir storage is limited to 29,938 acre feet in total storage during construction activities. The percent full figures are based on the normal usable capacity of 29,811 acre feet.

August 7, 2023

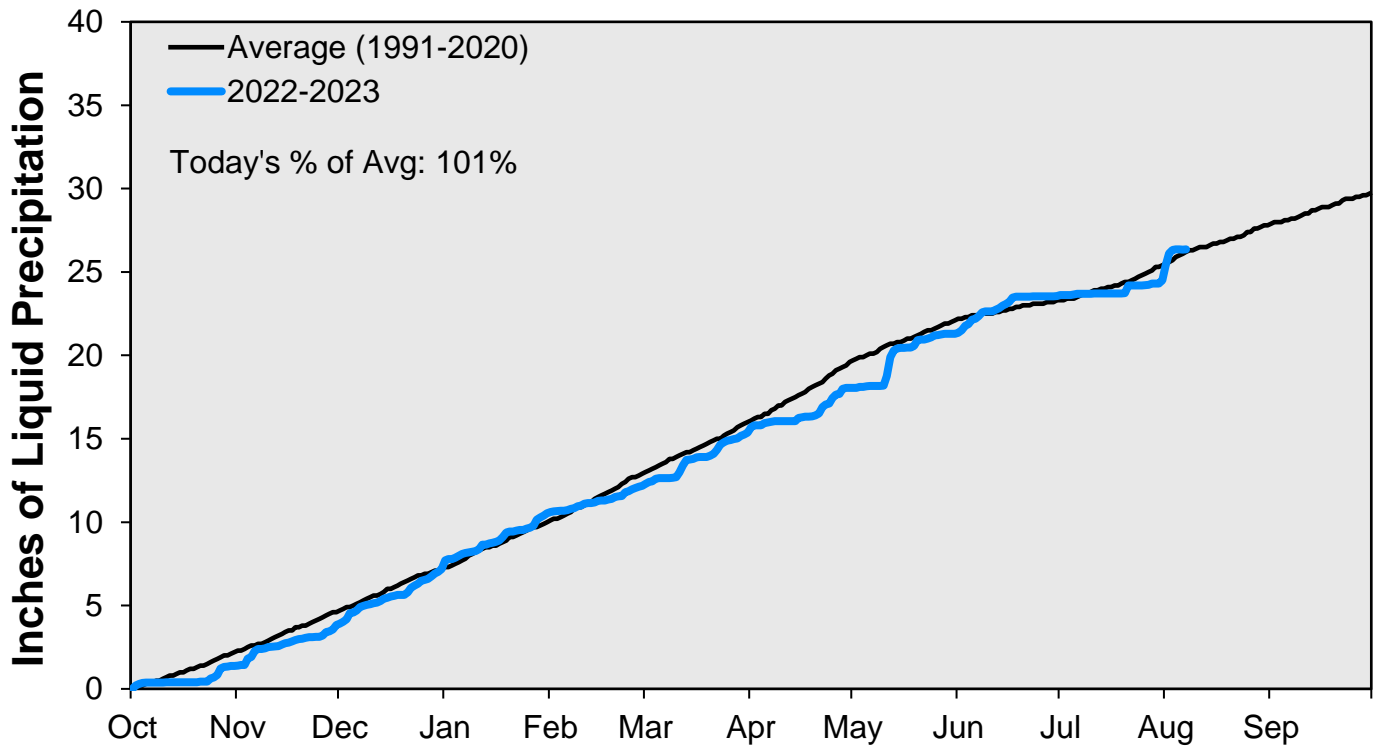
August Precipitation



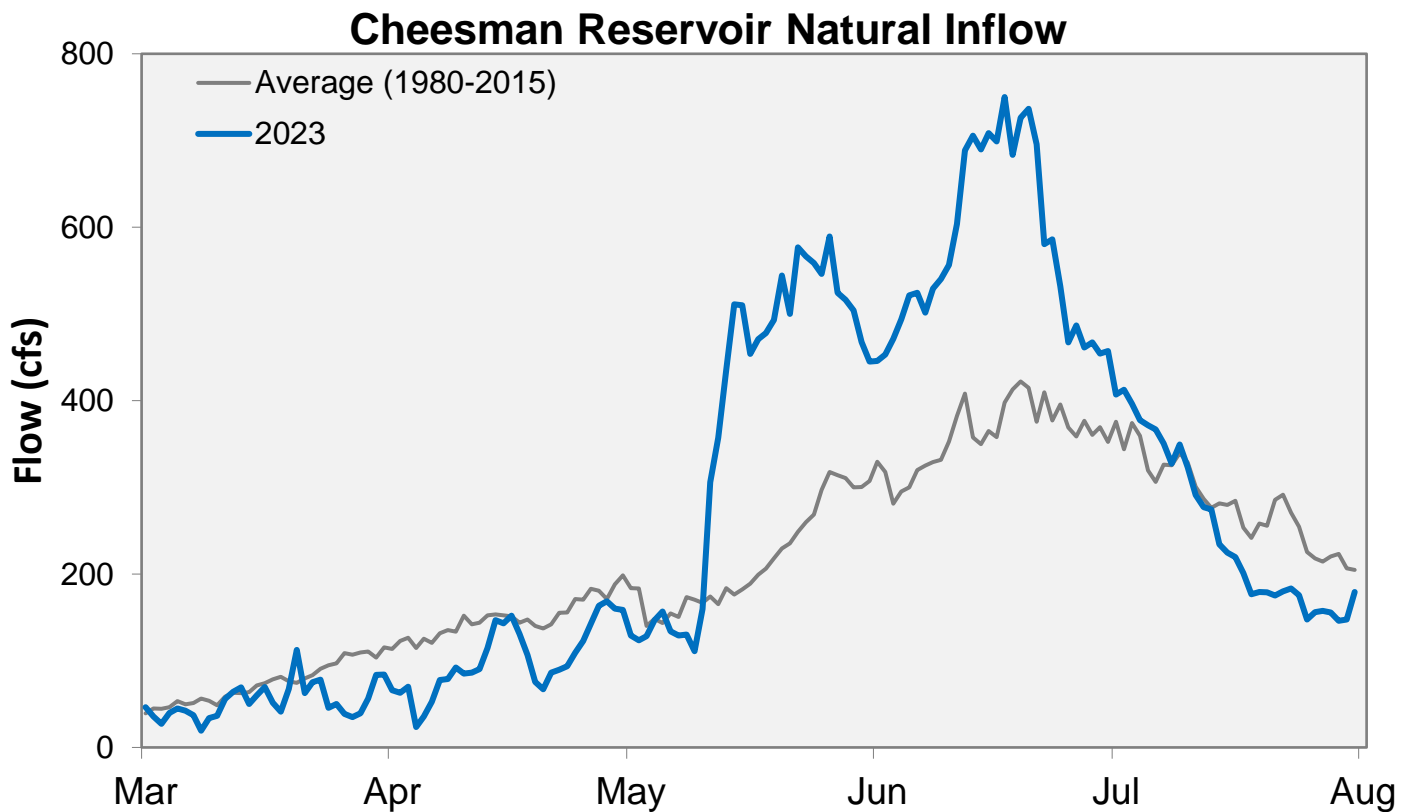
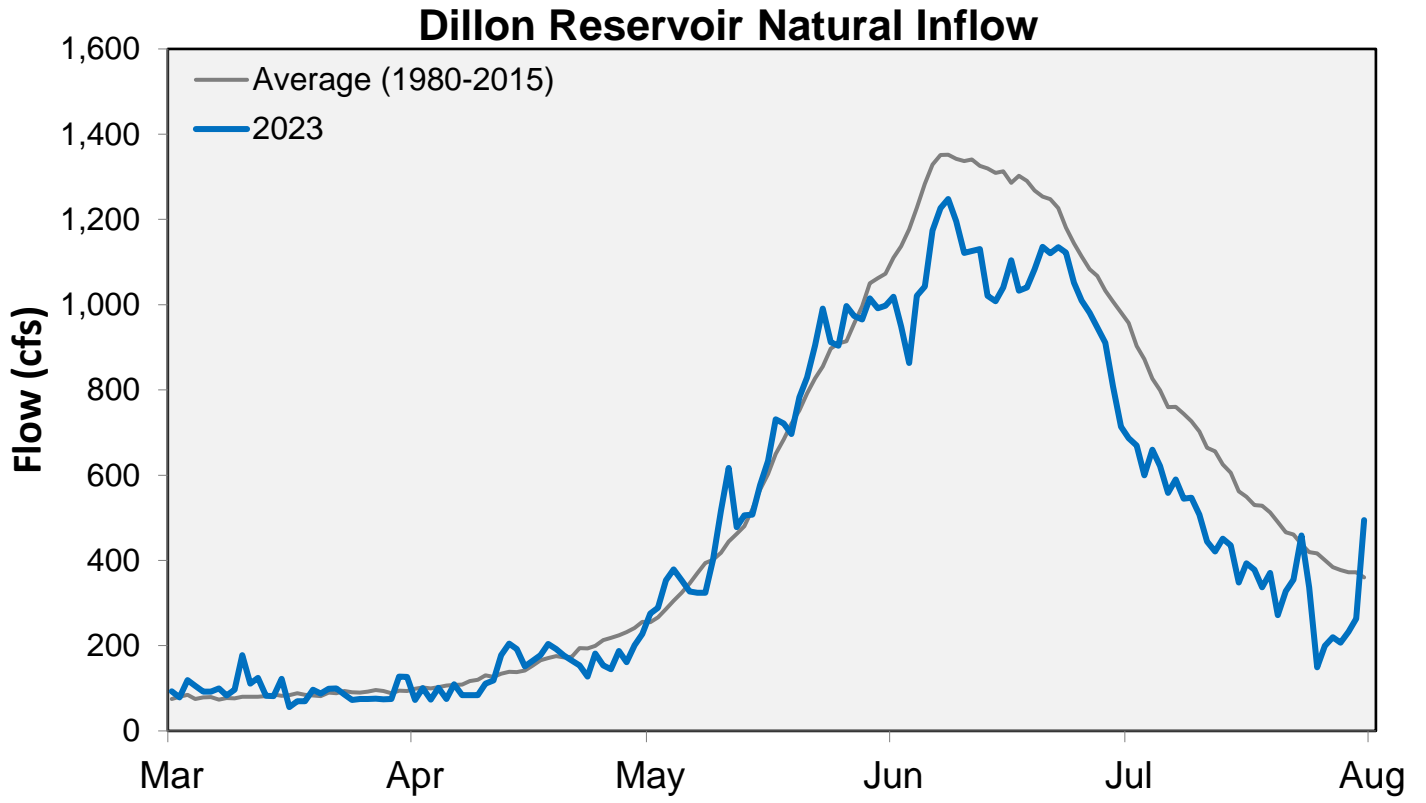
Cumulative Precipitation: South Platte River



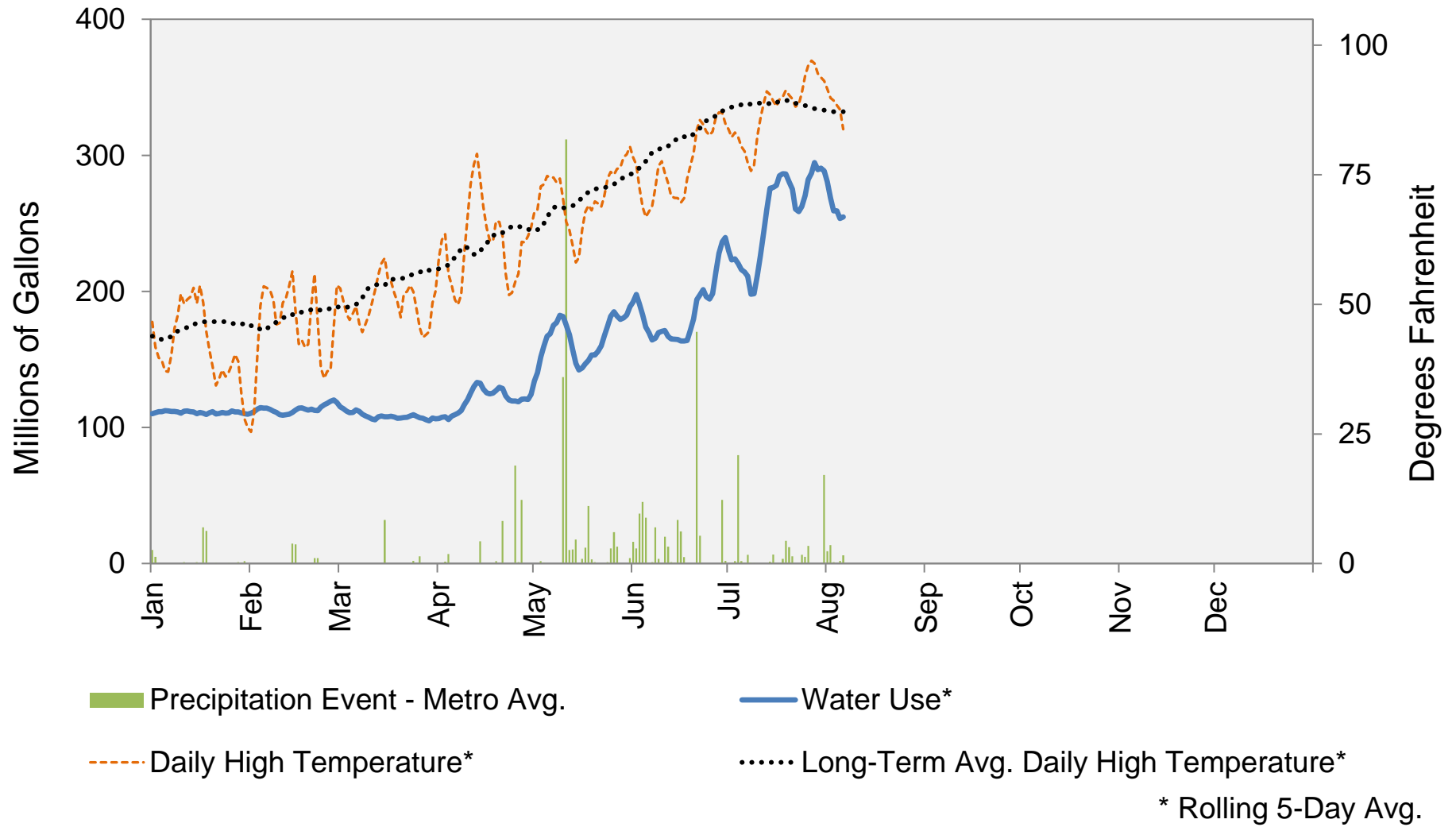
Cumulative Precipitation: Colorado River



Data are from the 7 SNOTEL stations above Denver Water's Upper Colorado diversion facilities.



2023 Water Use and Weather Conditions

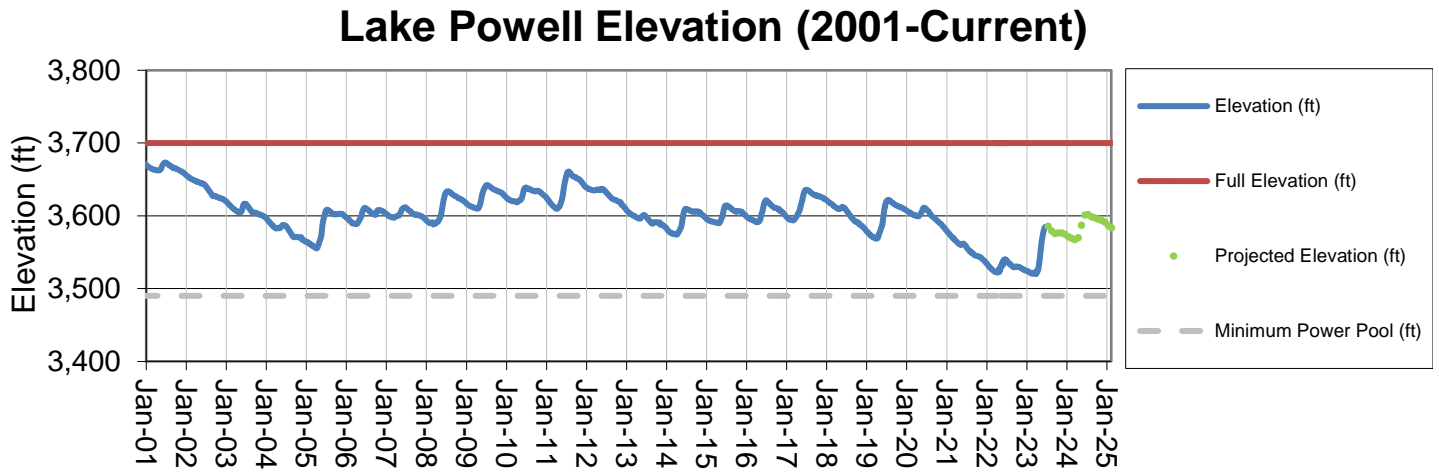


August 7, 2023

Denver Water Use and Reservoir Contents 2023													
	Jan	Feb	Mar	Apr	May	Jun	Jul	Aug	Sep	Oct	Nov	Dec	YTD-Avg
Predicted End-of-Month Supply Reservoir Contents (Full = 518,449 AF)	486,500												
Actual End-of-Month Supply Reservoir Contents (AF)	427,785	423,299	418,434	416,025	467,021	507,913	500,096						
Actual % Full	83%	82%	81%	80%	90%	98%	96%						
Historical Median % Full	81%	80%	79%	79%	88%	98%	95%	92%	88%	85%	84%	83%	
2023 Expected Daily Use (MG)	102	102	102	125	190	275	310	297	270	172	108	102	176
Actual Daily Use (MG)	1	105	111	105	107	164	182	201	235				
	2	115	116	114	111	150	200	217	251				
	3	113	119	109	108	178	166	258	236				
	4	112	114	112	102	163	155	210	282				
	5	117	111	114	113	180	166	195	264				
	6	104	111	114	113	173	160	192	241				
	7	112	111	109	117	182	174	202					
	8	114	112	99	117	187	173	191					
	9	110	110	106	123	190	175	211					
D	10	112	103	109	132	175	171	263					
A	11	112	108	107	137	142	163	264					
Y	12	112	113	106	141	145	153	288					
	13	112	115	110	131	135	163	274					
O	14	109	116	109	121	138	174	291					
F	15	106	111	107	111	151	170	265					
	16	117	116	107	123	149	158	271					
M	17	109	113	108	138	159	153	324					
O	18	106	111	107	134	149	165	281					
N	19	116	112	105	130	158	212	290					
T	20	110	115	108	124	151	209	236					
H	21	109	111	109	118	162	230	245					
	22	111	113	109	110	180	170	251					
	23	111	123	111	120	185	185	272					
	24	112	121	110	126	195	186	309					
	25	111	121	102	124	186	201	276					
	26	115	120	104	115	179	250	303					
	27	107	118	107	120	164	250	274					
	28	110	113	106	120	172	254	311					
	29	109		106	124	201	228	283					
	30	108		112	143	196	217	281					
	31	113		101		210		293					
Monthly Average	111	114	108	122	169	187	259	251					156
% of 2023 Expected Daily Use	109%	112%	106%	97%	89%	68%	83%	85%					88%

Notes: 1) "AF" denotes acre-feet. "MG" denotes million gallons. 2) Expected Daily Use is based on historical use with normal weather conditions. 3) The predicted end-of-month supply reservoir contents figures assume normal weather August 7th, 2023. 4) The differences between predicted and actual end-of-month supply reservoir contents are the result of normal estimation error of daily use, supply, evaporation, carriage losses and raw water deliveries. 5) Predicted supply reservoir contents last updated on August 7th, 2023. 6) Daily water figures are subject to change.

Lake Powell Report*



* Denver Water gets half of its water supply from the Colorado River and closely monitors conditions at Lake Powell and within the greater Colorado River Basin.