



An aerial photograph of a large construction site, likely a parking lot or industrial area, with various pieces of heavy machinery, vehicles, and structural elements visible. The image is overlaid with a semi-transparent yellow and green gradient. The text is centered and reads:

PLAN REVIEW AND CONSTRUCTION STATUS REPORT

October - 2023

SUMMARY OF PROJECTS IN DESIGN AND IN CONSTRUCTION

New Development Projects – Various Stages of Design/Plan Review/Construction

All Developer project review and construction inspection is fully funded by the project owner, involving District Staff, District Engineer and Denver Water

Projects in Southwest Metro:

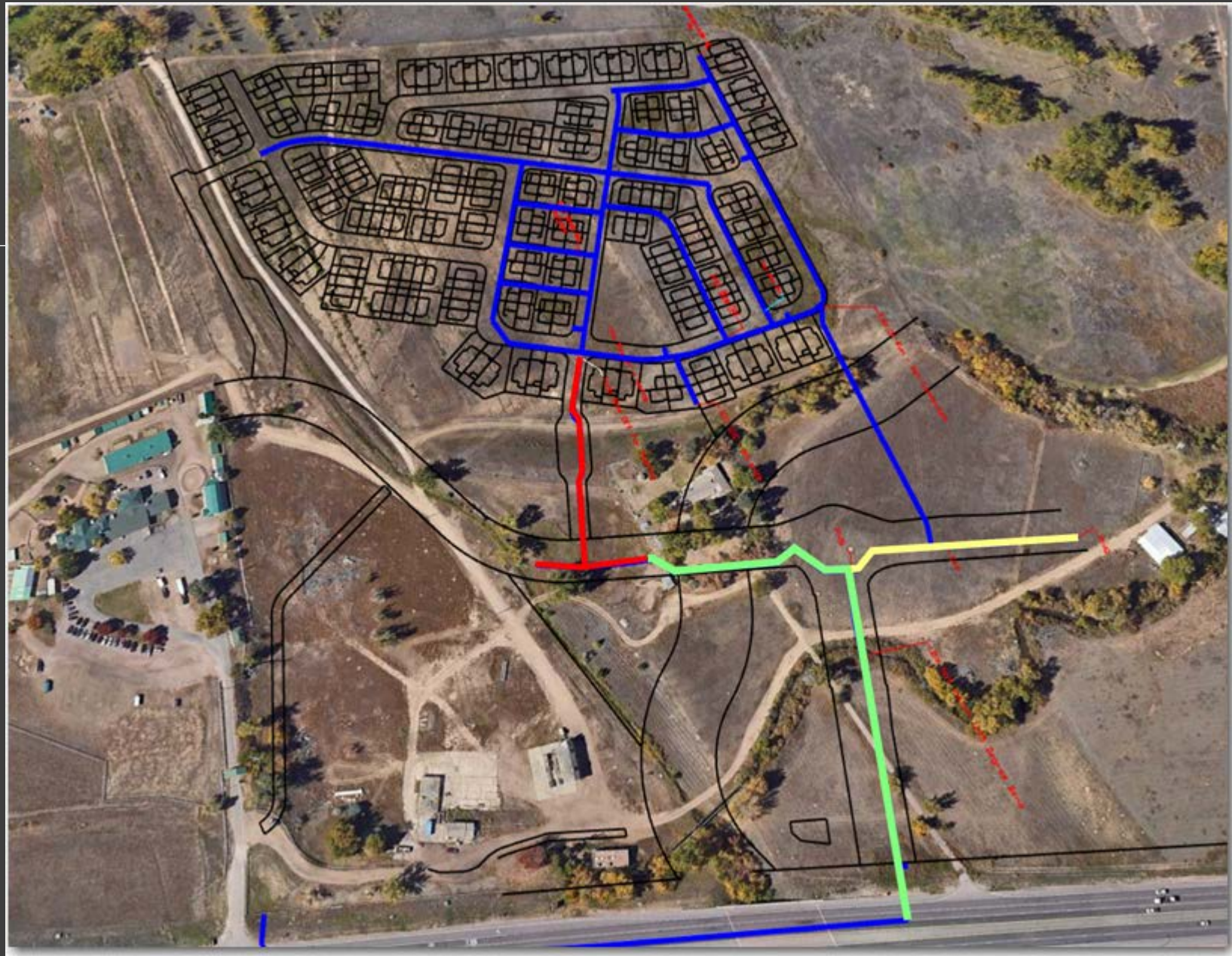
1. *Santa Fe Park South - Mineral & Santa Fe – 1,1001 SFE's – In Construction*
2. *CDOT Hydrant Relocation – C-470 & Santa Fe In Construction*
3. *Angeline Apartments - Mineral & Santa Fe – 243 SFE's*
4. *River Park/Quad-Road - Mineral and Santa Fe – 800 SFE's*
5. *RiverPark Outlook Mineral and Santa Fe 240 SFE's*
6. *Parcel J Apartments - Mineral & Santa Fe – Multi Family –*
7. *Valvoline Quick Lube – Coal Mine and Kipling – (Fire Hydrant)*
8. *Westend Ridge – Coal Mine and Independence – Multi-family – 109 SFE's*
9. *Ken Caryl Commerce – Ute & Toller – Warehouse*
10. *Artisan Distillery – C-470 and Bowles*

Projects in Platte Canyon:

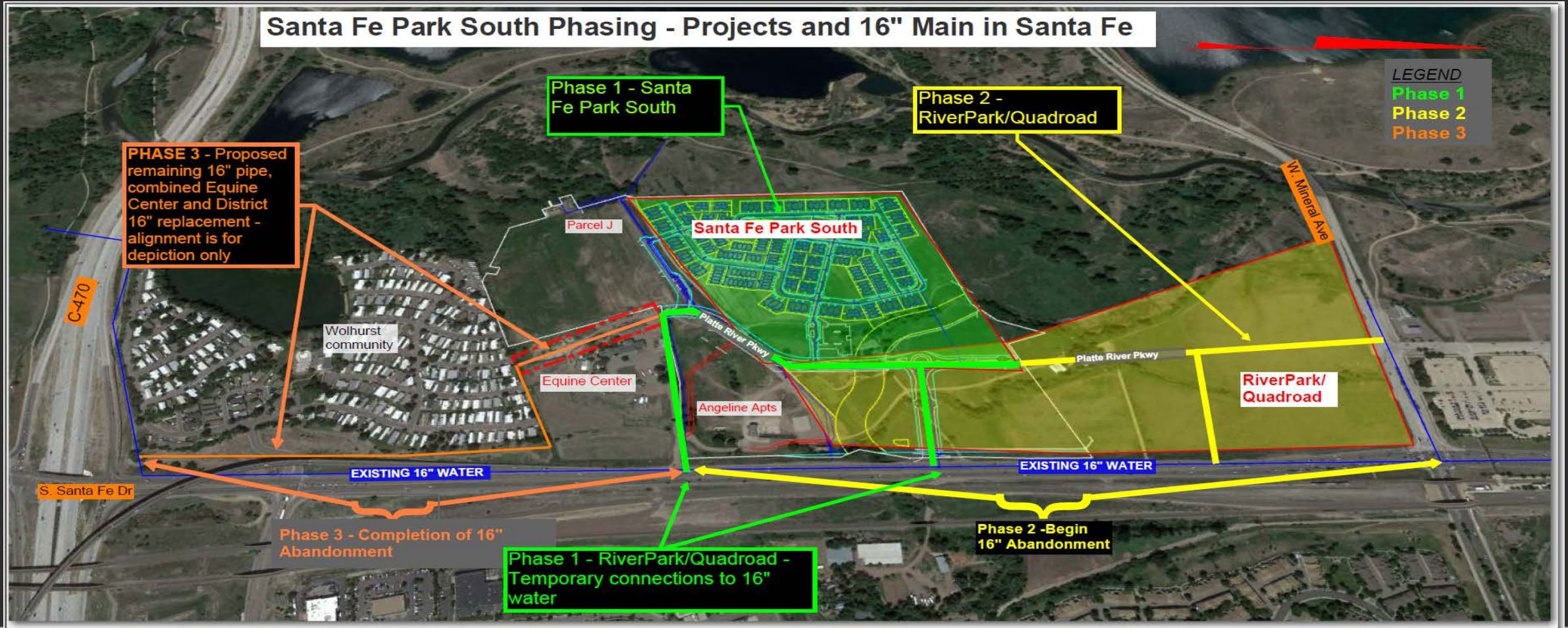
1. *Ken Caryl Retail Center Fil 2 - Ken Caryl & Pierce – Commercial Development*
2. *Arcadia Creek – Leawood and Sheridan (Residential) 14 SFE's*
3. *Christian Brother Automotive – Pierce and Coal Mine (south of King Soopers)*
4. *Vintage Overlook – Residential – 7 SFE's*

Santa Fe Park South - SWM

- 6,360 L.F. of water main has been installed
- 7,257 L.F. to complete project
- Total footage - 13,617 L.F.
- **Conducting pressure test and clearwater test**
- 6,180 L.F. of sewer main has been installed
- 1,835 L.F. to complete project
- Total footage – 8,015.00



- Phase 1 – 16" Connections to Feed Santa Fe Park South - Connections DONE
- Phase 2 – 16" Pipe re-routed through Platte River Pkwy - RiverPark/Quadroad Project – In Design
- Phase 3 Combined District Replacement Project and Equine Center Project – Preliminary Design
- CDOT Wants to begin work on the Quad-Road – Combined with RiverPark



➤ *CDOT – Santa Fe Widening Project at C-470*



Fire Hydrant Abandonment – Night Work Oct. 9th

*Equine Medical Hospital – Out of water for 6 hours
They could not be shutoff during the day, so the
night work was the best option*

Had to drain 3000' of 16" main in Santa Fe

THE FOLLOWING ARE 2023 & 2024 CAPITAL PROJECTS IN
Design or Construction

**CONSTRUCTION
AHEAD**

FOR MORE INFORMATION PLEASE VISIT:
www.plattecanyon.org/construction-corner
or call **303-979-2333**



➤ 2023 Platte Canyon Water Project – S. Depew St; from Ken Caryl to W. Canyon Trail:



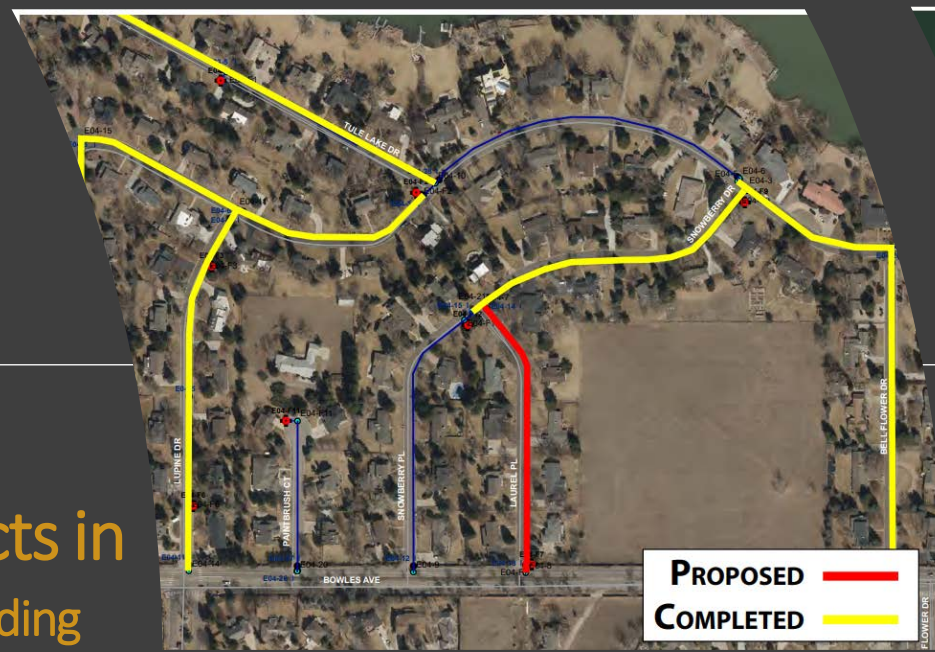
Schedule: Started Construction 9/27/23

*Current Activity - 95% of Pipe Installed to date
Performing clearwater / pressure tests*

*Work to be Done – Change over services
Roto-mill and pave*

2024 Platte Canyon projects in Bow Mar South – Design Pending

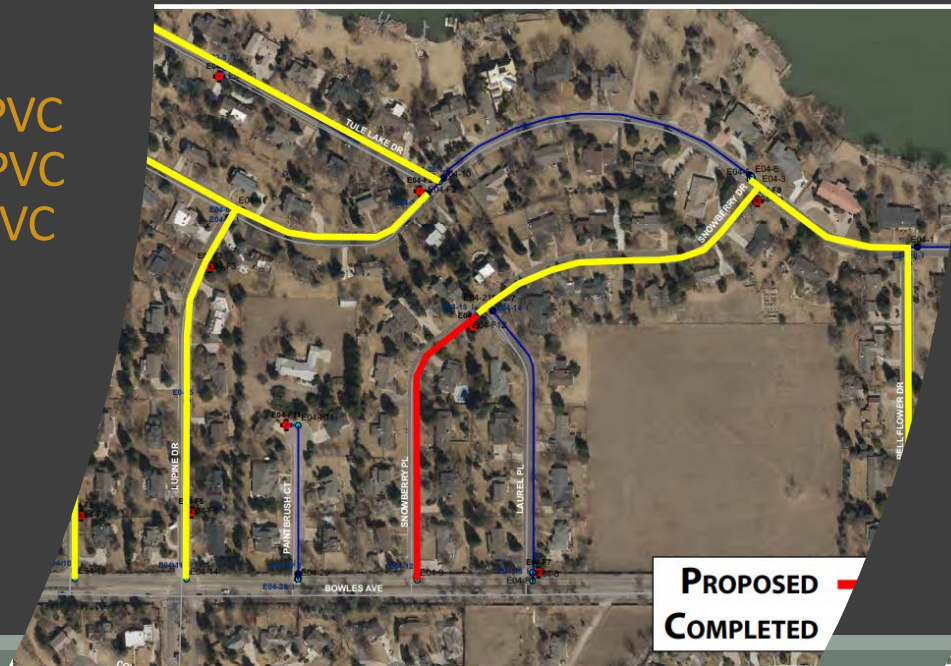
- 1. S. Laurel Pl – 758' of 6" PVC
- 2. S. Snowberry Dr – 797' of 8" PVC
- 3. Marigold Lane – 1,028' of 6" PVC
- 4. Blue Sage Dr – 1,906' of 12" PVC



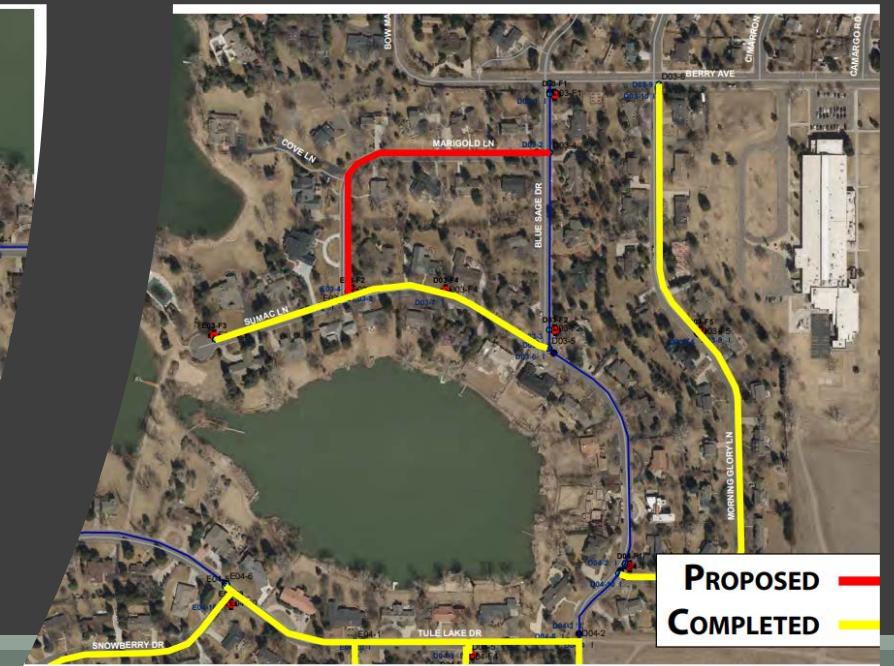
S. Laurel Pl



Blue Sage Dr



S. Snowberry Dr



Marigold Lane

QUESTIONS?