

Construction Plan Review & Status Report

January - 2024



Platte Canyon Water and Sanitation

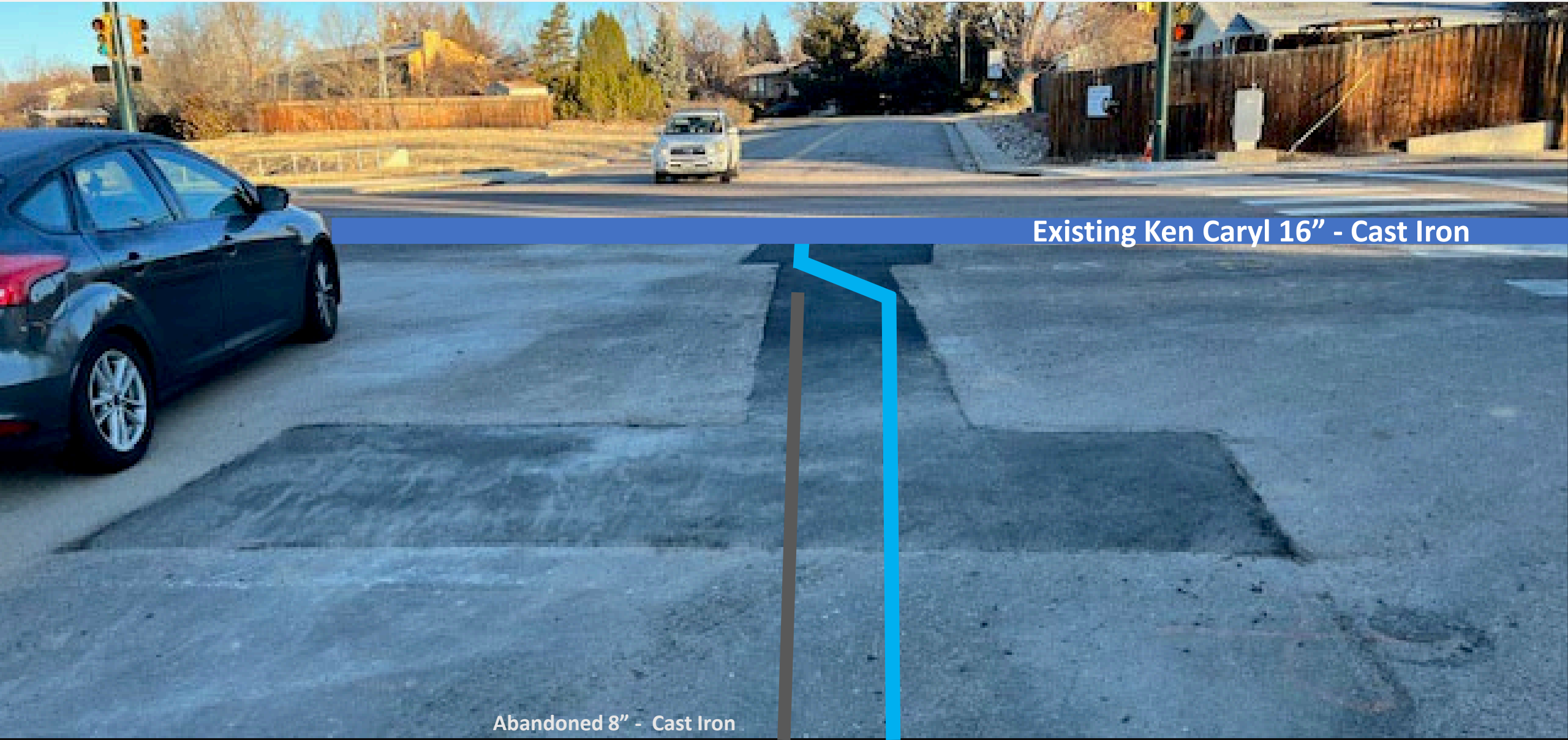
2023 S. Depew St. Water Main Replacement

- Bid schedule items have been completed.
 - Advertisement for final settlement is scheduled to appear in the legal section of the Littleton Independent on 01/25 and 02/01/2024.
 - 5% Retainage in the amount of \$31,850.85 is scheduled for release on 02/05/2024.
 - Final Completion Date: December 28, 2023
 - Start Date: October 10, 2023
-



Platte Canyon Water and Sanitation

2023 S. Depew St. Water Main Replacement

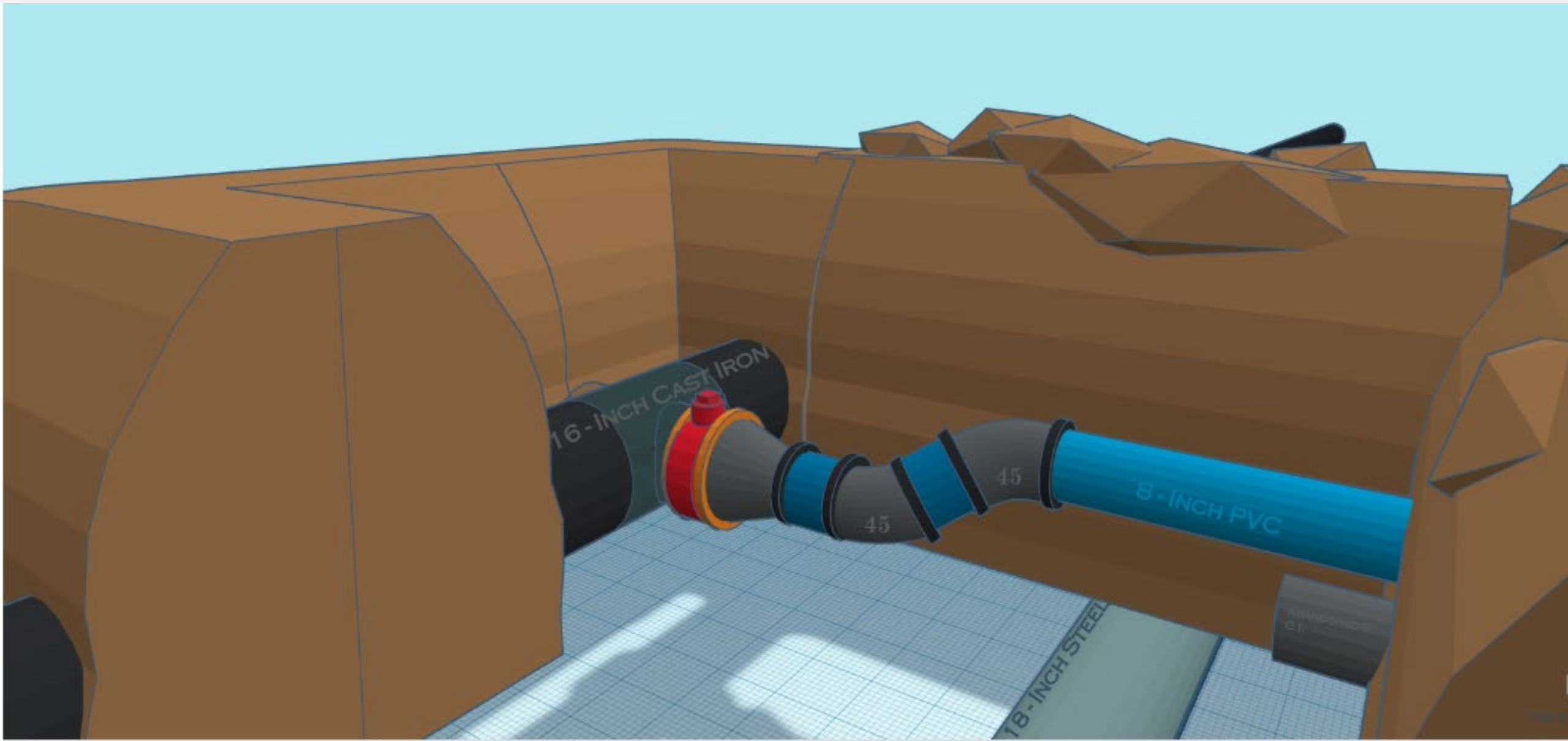


Existing Ken Caryl 16" - Cast Iron

Abandoned 8" - Cast Iron

Platte Canyon Water and Sanitation

2023 S. Depew St. Water Main Replacement



Platte Canyon Water and Sanitation

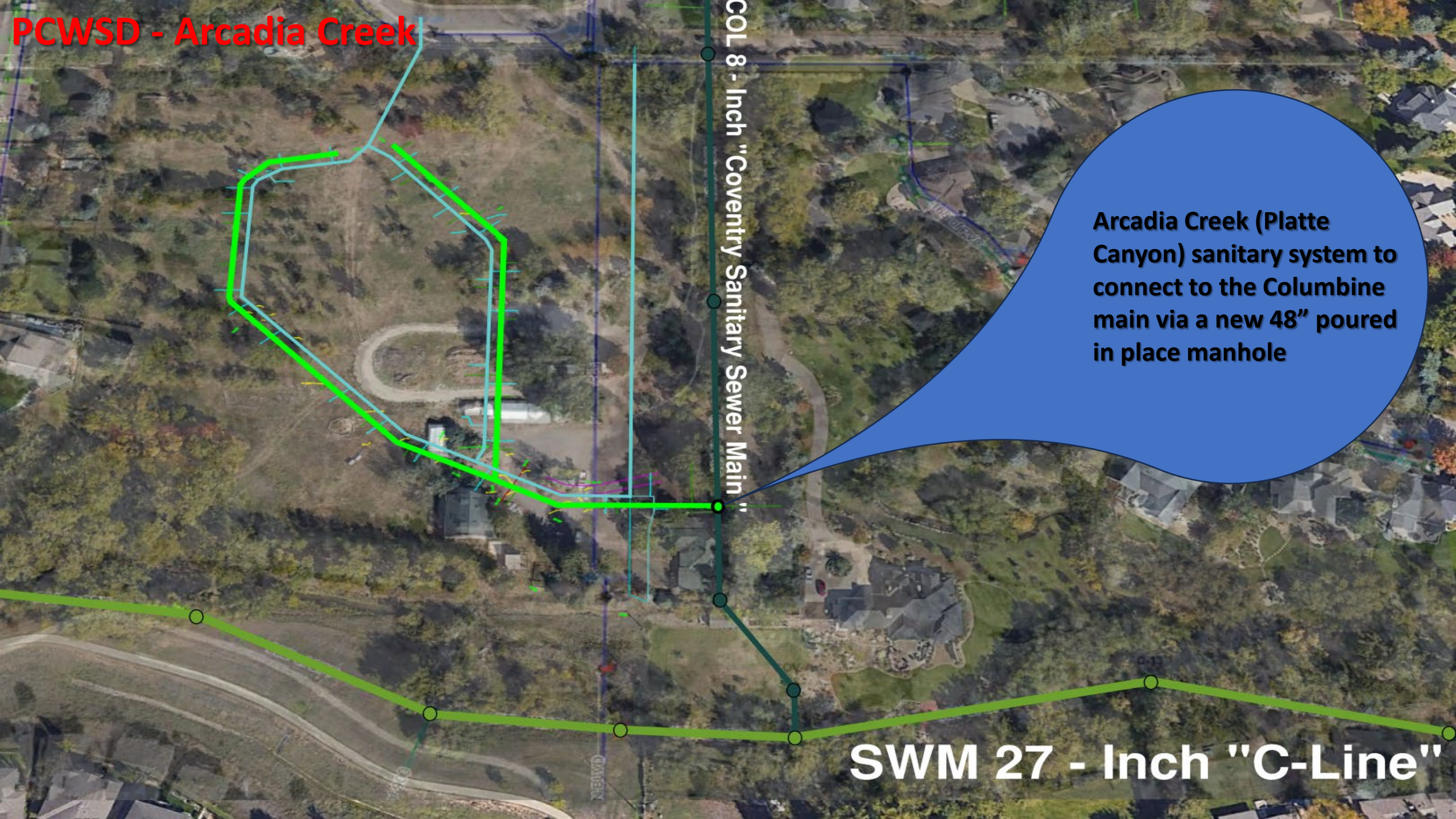
Arcadia Creek - Developer Project



S. Pierce

W. Coal Mine Ave.

S. Platte Canyon Rd.



PCWSD - Arcadia Creek

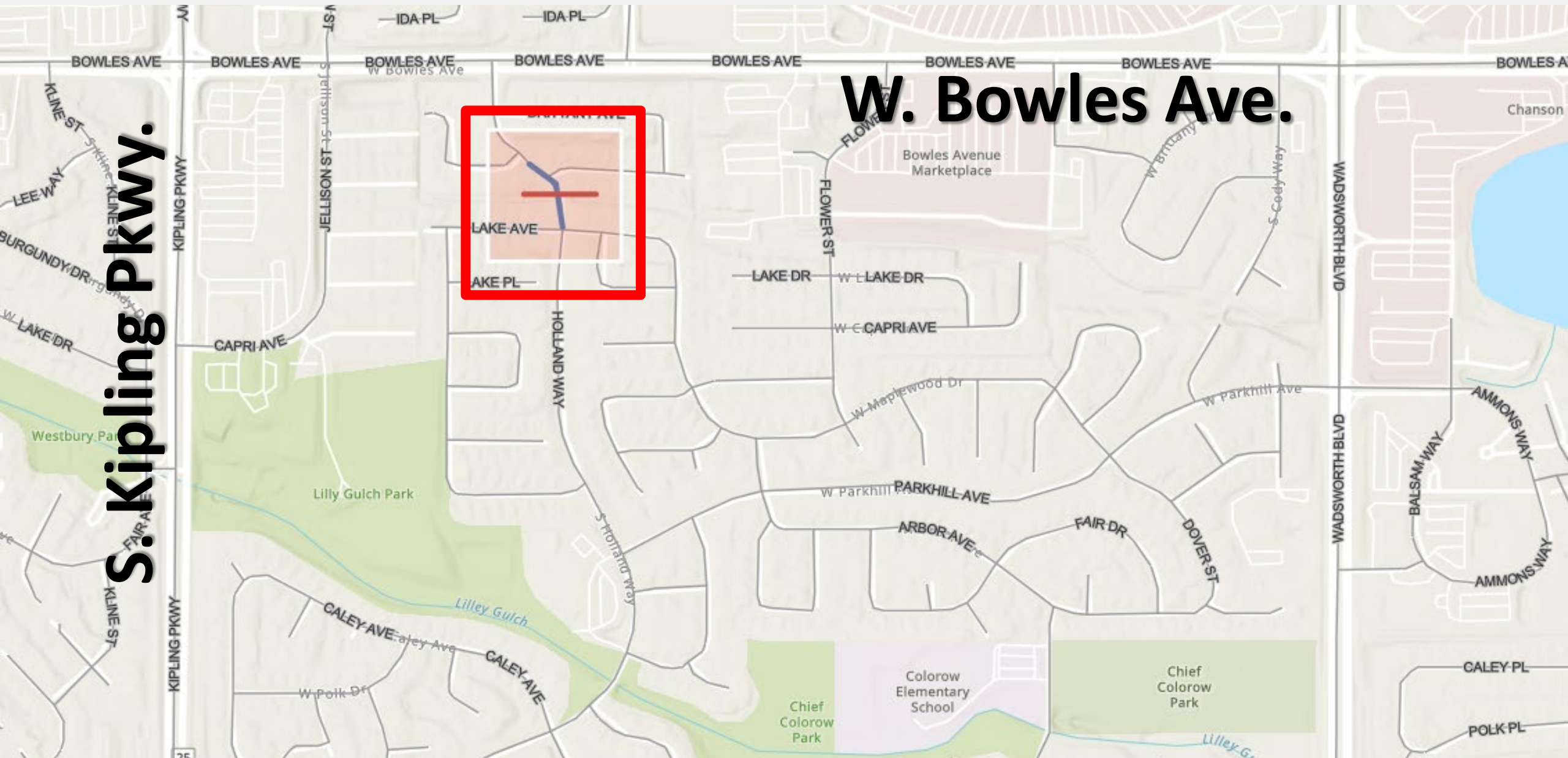
COL 8 - Inch "Coventry Sanitary Sewer Main"

SWM 27 - Inch "C-Line"

Arcadia Creek (Platte Canyon) sanitary system to connect to the Columbine main via a new 48" poured in place manhole

Southwest Metropolitan Water and Sanitation

Utility Interference – Water Line Lowering

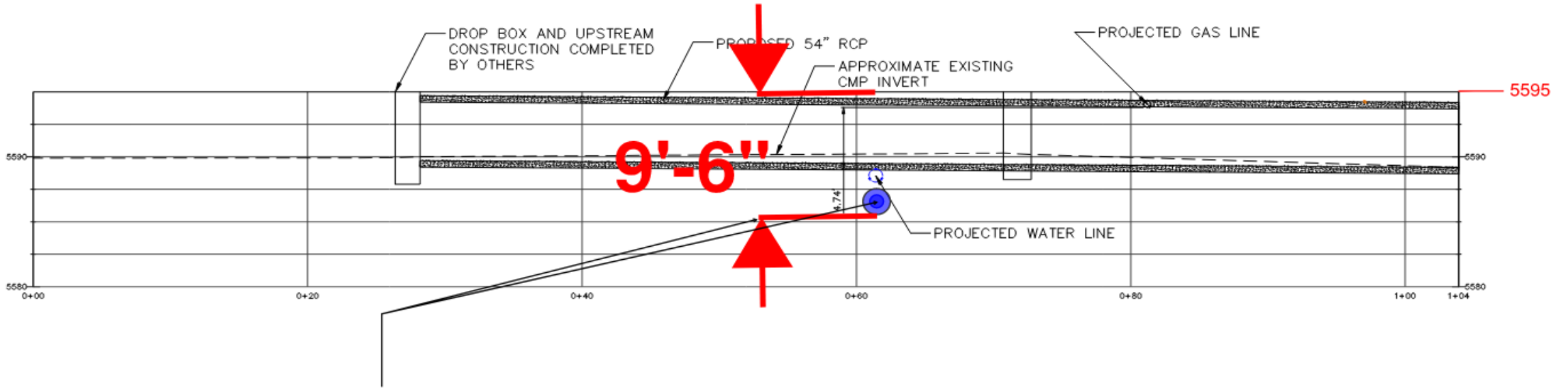


W. Bowles Ave.

S. Kipling Pkwy.

Southwest Metropolitan Water and Sanitation

Utility Interference – Water Line Lowering

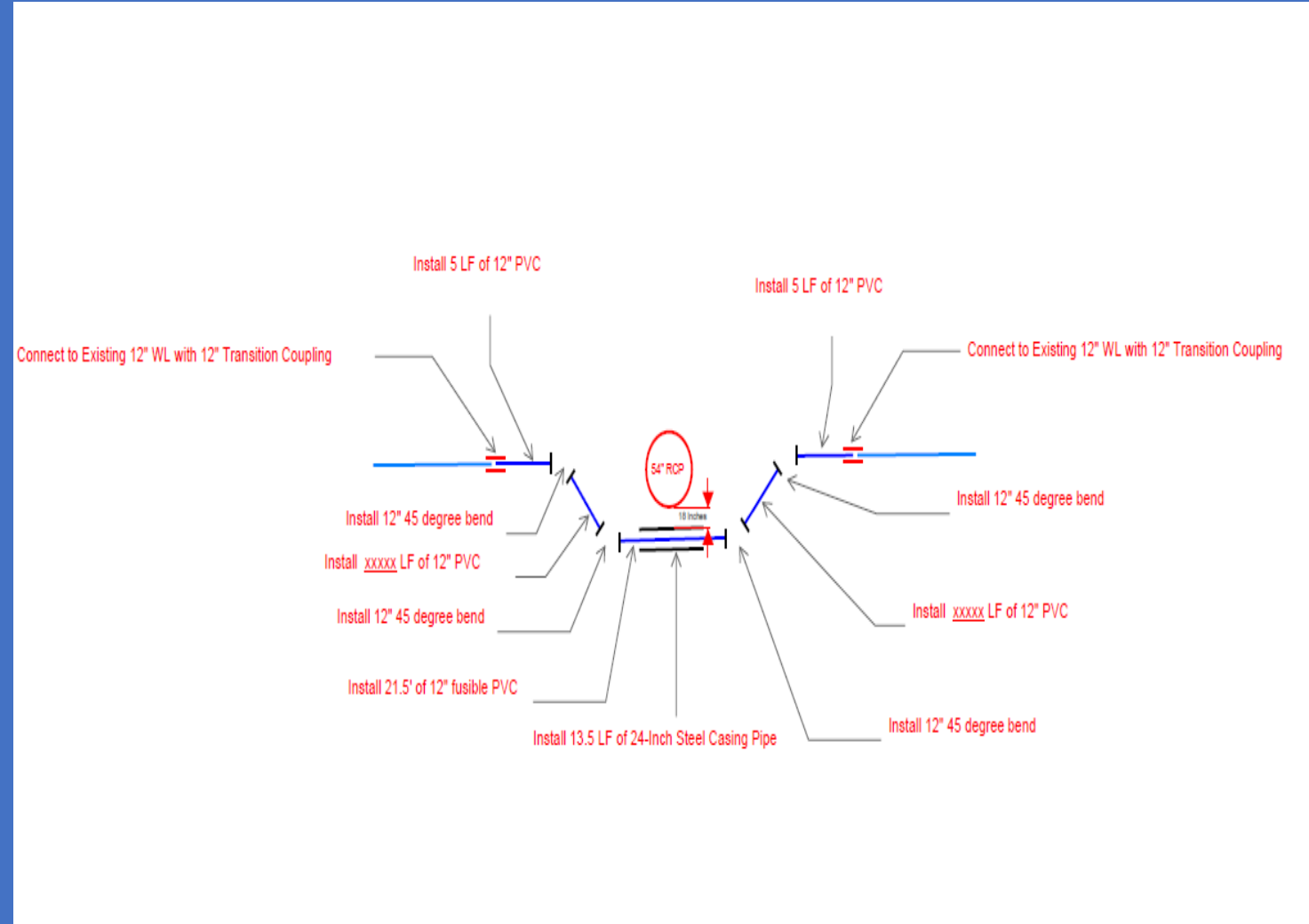
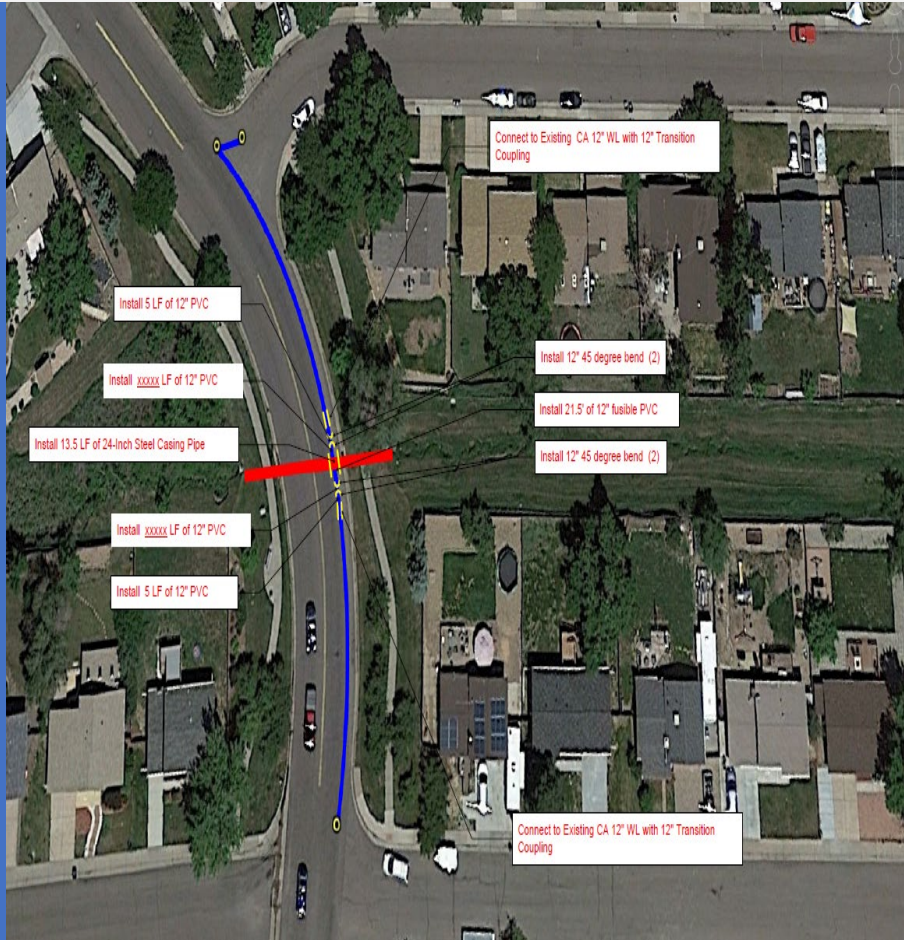


Proposed bury depth: 12" Water Line in 24" Steel Casing w/ 18 inches of vertical clearance



Southwest Metropolitan Water and Sanitation

Utility Interference – Water Line Lowering



An aerial photograph of a residential construction site in winter. The ground is covered in snow, and several houses are in various stages of construction. Some houses have dark roofs, while others are still under construction with exposed wooden frames. A large white truck with a red crane is parked on a dirt path. A yellow van and a white van are also visible. The scene is surrounded by other residential areas with snow-covered roofs and trees. A road with a stop sign is visible on the right side of the image.

Questions?