

# Platte Canyon & Southwest Metropolitan Water and Sanitation Districts

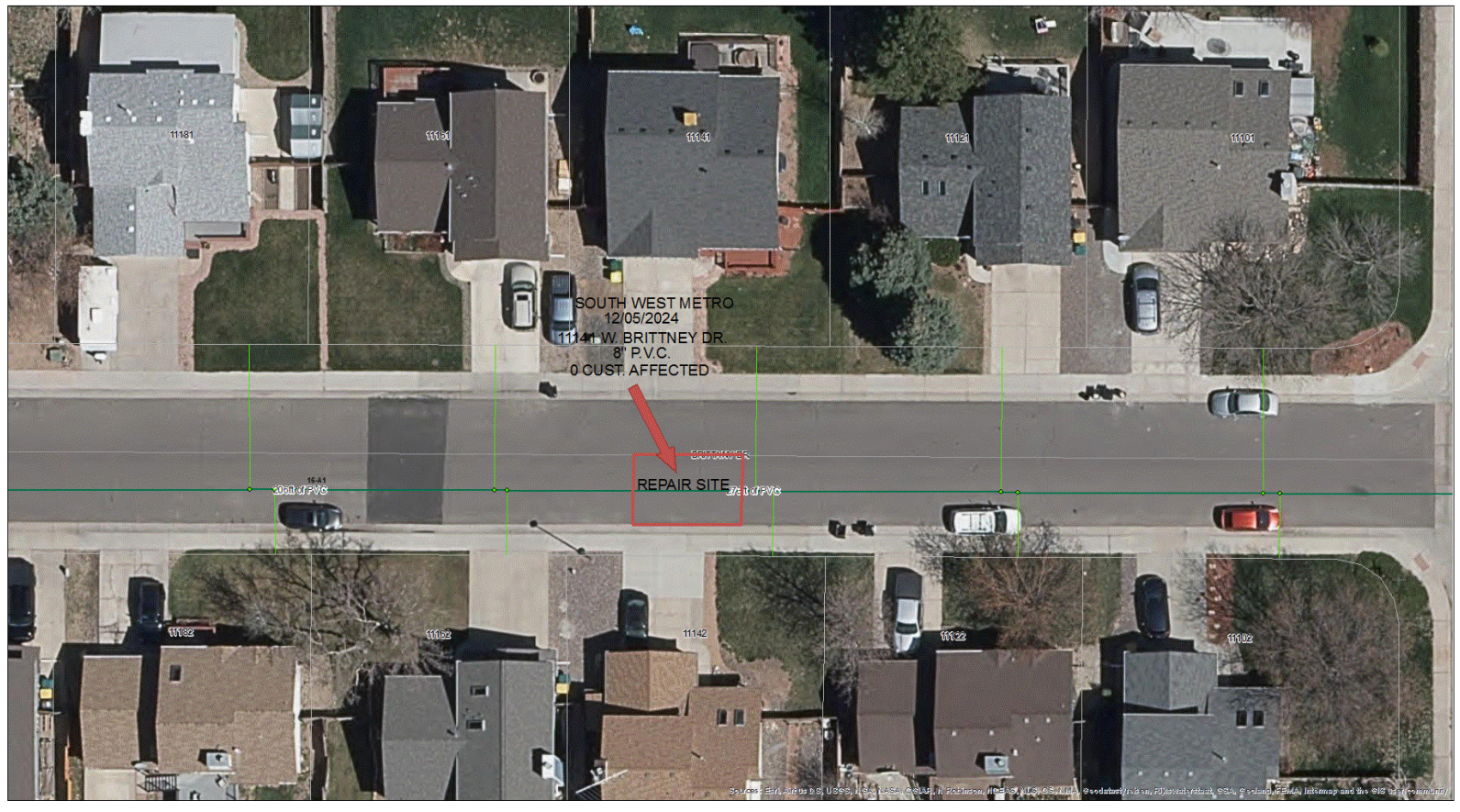
December 2024

Emergency Repairs

January 24, 2024

# 12/05/2024

## 11142 W. BRITTANY DR.(S.W.M.)



12/05/2024

11142 W. BRITTANY DR.(S.W.M.)



12/05/2024

11142 W. BRITTANY DR.(S.W.M.)



12/05/2024

11142 W. BRITTANY DR.(S.W.M.)



12/05/2024

11142 W. BRITTANY DR.(S.W.M.)



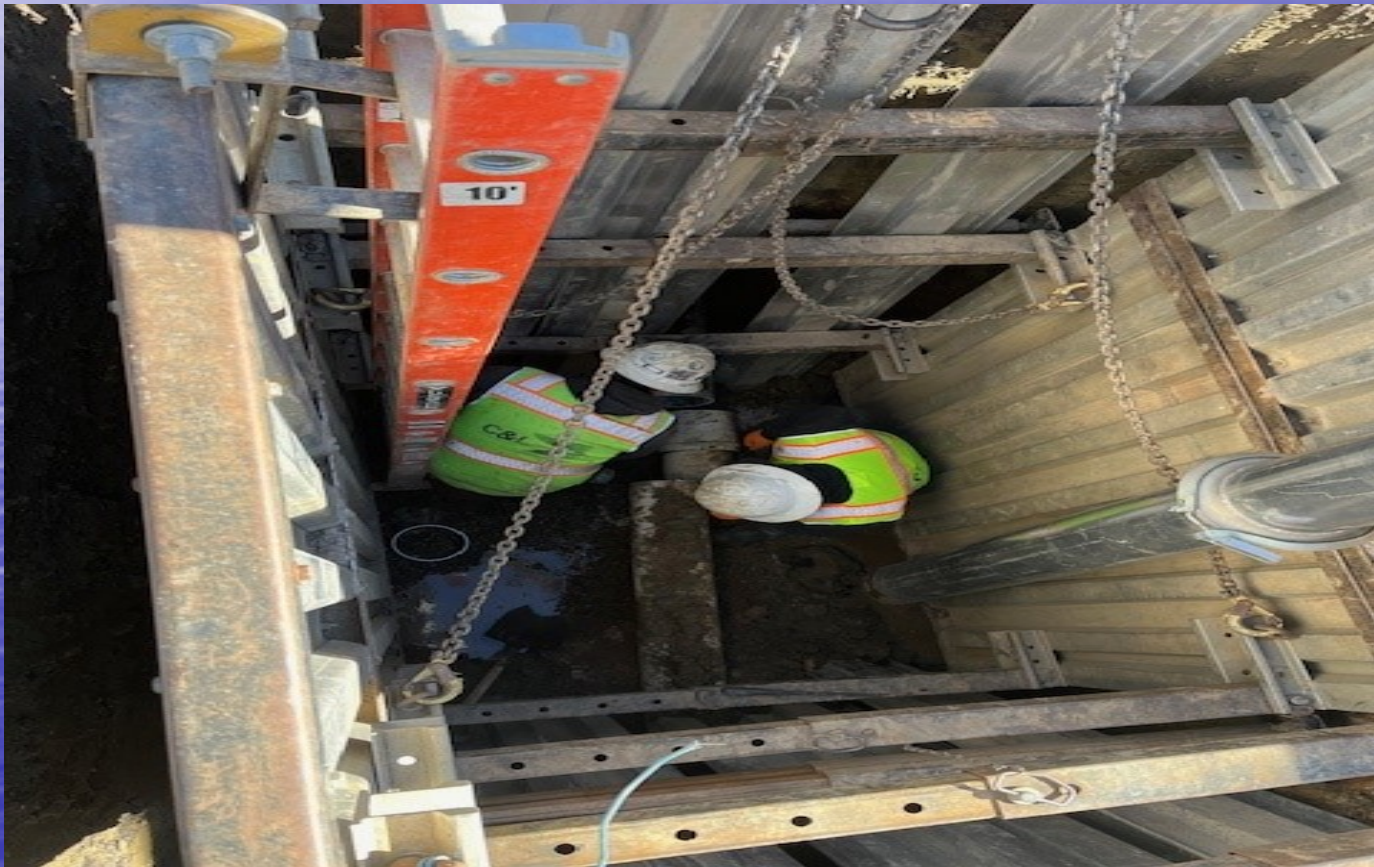
12/05/2024

11142 W. BRITTANY DR.(S.W.M.)



12/05/2024

11142 W. BRITTANY DR.(S.W.M.)





12/05/2024

11142 W. BRITTANY DR. (S.W.M.)



12/05/2024

11142 W. BRITTANY DR. (S.W.M.)



12/20/2024

6272 S. EVERETT ST. (S.W.M.)



12/20/2024

6272 S. EVERETT ST. (S.W.M.)



12/20/2024

6272 S. EVERETT ST. (S.W.M.)



12/20/2024

6272 S. EVERETT ST. (S.W.M.)



12/20/2024

6272 S. EVERETT ST. (S.W.M.)



12/20/2024

6272 S. EVERETT ST. (S.W.M.)





12/20/2024

6272 S. EVERETT ST. (S.W.M.)



12/20/2024

6272 S. EVERETT ST. (S.W.M.)



12/20/2024

6272 S. EVERETT ST. (S.W.M.)



12/25/2024

6990 S. DEPEW ST. (P.C.)



12/25/2024

6990 S. DEPEW ST. (P.C.)



12/25/2024

6990 S. DEPEW ST. (P.C.)



12/25/2024

6990 S. DEPEW ST. (P.C.)



12/25/2024

6990 S. DEPEW ST. (P.C.)





12/25/2024

6990 S. DEPEW ST. (P.C.)



+39.591079,-105.058129  
12/25/24, 14:35

12/25/2024

6990 S. DEPEW ST. (P.C.)



12/25/2024

6990 S. DEPEW ST. (P.C.)



12/25/2024

6990 S. DEPEW ST. (P.C.)



12/25/2024

6990 S. DEPEW ST. (P.C.)



12/25/2024

6990 S. DEPEW ST. (P.C.)

